



CASAGRANDE  
ELETTRICOSTRUZIONI  
SpA  
ELECTROMECHANICAL TECHNOLOGIES



# ELECTROMECHANICAL TECHNOLOGIES



## WHO WE ARE

Casagrande Elettrocostruzioni SpA is a company operating in the Electromechanical market since 1959, having as main core business Medium Voltage switchgears, Low Voltage switchboards and customized MV Cubicles

With a flexible approach, the company is strongly “customer oriented”, proposing customized solutions able to comply with the specific client’s requirements and ensuring a complete service including technical consulting, engineering, manufacturing, installation, commissioning and after sales service.

With a consolidated turnover of about 30 million Euros and more than 100 direct employees, the company operates in three different production facilities in Italy with a total surface of 12.000 square meters.

By means of high competence and experience, the company is today able to collaborate with major world players in the global electrical business mainly in Oil&Gas, Power Generation, Steel Industry and Petrochemical.



The main and historical headquarter is placed in Castel d'Azzano (Verona), where are located:

- Managing Direction
- Commercial Department
- Administrative and Accounting Department
- Engineering Department
- Assembling and electrical production
- Site activity coordination

Secondary factory in Castel d'Azzano (Verona) where are located:

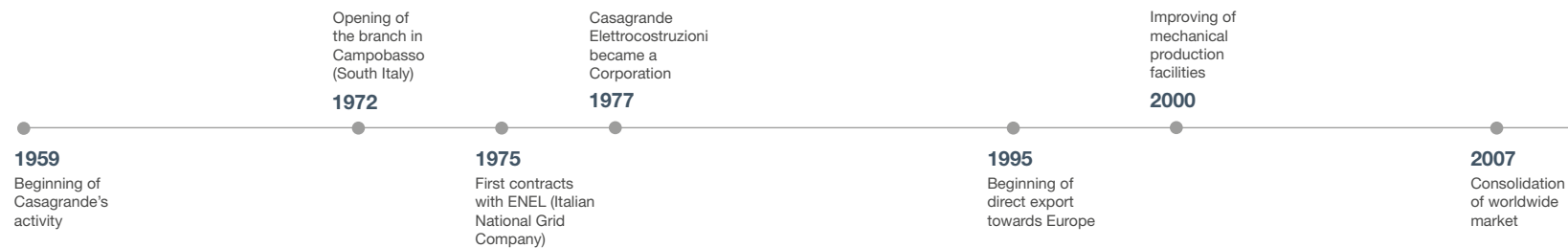
- Mechanical manufacturing
- Mechanical assembling
- Assembling and electrical production

Subsidiary in Vinchiatturo (Campobasso) situated in the South-Italy area with:

- Engineering Department
- Mechanical manufacturing
- Assembling and electrical production







## OUR HISTORY FROM THE YEAR 1959



Team of Castel d'Azzano Verona factory

**“Getting together is a beginning,  
staying together is progress,  
working together is success.”**

**“Mettersi insieme è un inizio, rimanere insieme  
è un progresso, lavorare insieme un successo.”**

Henry Ford



## OUR HISTORY

Founded in 1959 thanks to the initiative of two brothers Antonio and Arnaldo Casagrande the company starts locally with electrical installation activities, today the company is mainly oriented in switchgears, switchboards and cubicles manufacturing.

Today the company is managed by the second generation of Casagrande family keeping the spirit that led to its original success.

Few years after its birth, Casagrande becomes a relevant manufacturer of Medium Voltage Switchgears and Low Voltage Switchboards for the Italian Industry.

In the year 1977 the company takes the legal form of Corporation and assumes with full rights the qualification as valued and homologated supplier of ENEL (Italian National Grid Company).

In the meanwhile, it starts business relation with other important Italian Customers and primary Multinational Companies.

At the beginning of the 90's, Casagrande starts to develop its market abroad mainly in Europe and in few years it reaches significant results with the most important leading Companies mainly in the field of Power Generation and Steel Industry.

Between 2000 and 2010 the company improves its capabilities turning to a worldwide market business.

Nowadays Casagrande offers its products to Customers and multinational Groups as well as: GE, Siemens, ABB, Air Liquide, Terna, Enel, Danieli, SMS and many others in the worldwide markets of Power Generation, Steel Industry and Oil&Gas.

Team of Vinchiatturo Campobasso factory





Our Technical Department is composed by a staff of Engineers with long experience and skilled at the state of the art for LV, MV, HV systems, following main international standards and rules.

Technical Department is mainly divided into two sectors:

- Electrical is in charge of electrical systems design and configuration also including layout, component sizing, protection system studies.
  - Mechanical is in charge of development design and customization of metal enclosures. CAD systems are used to create 3D models available for the Client in form of files or drawings. CAM systems allow to transfer to the production the manufacturing data directly to the dedicated numerical machinery.
- Thanks to its experience on real projects, the Technical Team supports R&D in the development or improvement of products. For each job, a dedicated Project Manager Engineer is the technical and managing interface with the Client. He is internally supported by a team of Mechanical and Electrical Technicians. "Works on job" basis is our principle, it means integrated solutions enabling to assist the Customer in engineering development phase from initial feasibility study, design, implementation up to turnkey and commissioning of the installation.



## ENGINEERING AND PROJECT MANAGEMENT



## MECHANICAL PRODUCTION

A full internal production line and qualified personnel, enables Casagrande Elettrocostruzioni to make and supply metal frameworks and cubicles for electrical panels and electromechanical equipment.

The in-house production process is based on the use of machineries with numerical controls of the last generation and it grants a high flexibility allowing to match with any Client's specific requirement. A high level of accuracy in production is achieved through application of control procedures in all production stages. The final product is of the best quality and reliable thanks to a careful selection of raw materials, technical know-how and production accuracy.

The production cycle for the construction of electrical panels includes the following main stages: cutting, punching, bending, riveting, welding, mechanical testing, assembling and painting.





## ELECTRICAL PRODUCTION

The production line with the assembling and electrical wiring departments is organized on projects areas. Each operator works with all tools and information necessary for completion of all production stages. Programmed controls and monitoring during manufacturing, guarantee the final quality of the product.

A team of Electrical Technicians is designated for each single job and coordinated by the Electrical Production Manager.

The Project Manager in charge to transfer the engineering design information for the manufacturing process, interface directly with the Electrical Production Manager.

The 100% of the products are routine tested by our internal Quality Department. The workshop is equipped with important lifting means for handling, such as crane 15000kg and forklift 7000kg.





# PRODUCTS

## LOW VOLTAGE

**CE-PC** Power Center switchboards  $\leq 6300A - 100kA$

**CE-MCC** in Withdrawable and fix version  $4000A - 100kA$

**CE-SA** Distribution Panels

**CE-PRO** Protection and Control Panels

**CE-BDBT** Bus Ducts  $6300A - 100kA$

## MEDIUM VOLTAGE

**CE-B** Metal Clad Switchboards  $\leq 40,5kV \leq 63kA \leq 4.000A$

**CE-BO** Metal Clad Switchboards for outdoor application  
IP66 or NEMA 4X

**CE-F** Switchboards fixed for Arc Furnace  $\leq 40,5kV \leq 4.000A$

**CE-BF** Switchboards withdrawable for Arc Furnace  $\leq 40,5kV$

**CE-LS** Generator Neutral and Line Cubicles  $\leq 15.000A$

**CE-GCBS** Generator switchgears with GCB Breaker  $\leq 8.000A$

**CE-TR VT/ SA** cubicles withdrawable of fixed version

**CE-BDMT** Bus Ducts  $\leq 36kV \leq 8.000A$

## OTHER PRODUCTS

**CE-S** E-House shelters

**CE-Enclosures** IP66 & Type NEMA 4X



CE-MCC



CE-B



CE-BO



CE-LS



CE-BF



CE-LS



CE-B



CE-GCBS



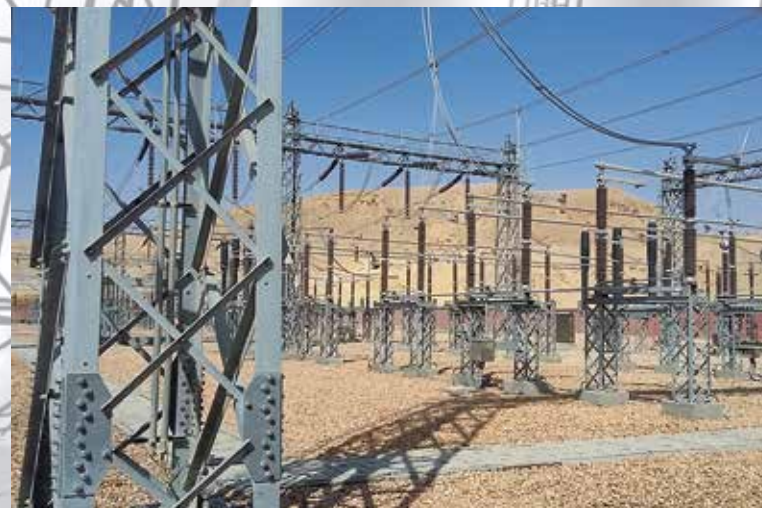
CE-S



# PLANTS & SITE SERVICES

## PLANTS

- Power Stations and generation plants
- Turn-Key electrical packages for generator
- Industrial distribution systems
- HV primary system substations up to 380KV
- 132/60/30KV HV/MV substations
- MV/LV electrical cabinets



## SITE ACTIVITIES

- Installation of LV and MV cubicles and switchboards
- Installation of HV equipment and relative metallic supports
- Connection and laying of control cables and cable ways
- Supervision for erection and installation
- Commissioning
- Start-up
- Protection site tests with injection of voltage and current
- Protection systems commissioning and start-up





To meet the market needs and to fulfill specific Client's requirement, the company invests important resources in R&D to develop existing products and studying new ones.

The test tools available in the workshop allow to fully test products with high electrical performances, durability and functionality.



## R&D

### RESEARCH, DEVELOPMENT AND TESTS

#### MAIN TEST TOOLS

Important routine and type test tools are available in the quality department and allow to design and produce reliable and customized products.

A current generator test tool/machine is able to feed up to 15.000A to perform thermal temperature rise (type) test on our products and it is also used to simulate real site condition even with specific ambient temperature.

To perform insulation and dielectric tests in the workshop it is available an impulse test tool able to perform impulse test up to 400kV and a voltage generator able to perform industrial frequency test up to 120kV.

Short circuit, internal arc and other type test are performed in collaboration with main Italian and International laboratories (ie CESI, SVEPPI ..).

Seismic type test with acceleration up to 1g has been performed on all our main LV and MV products.



## MARKET SECTOR

The typical Clients of Casagrande are Turn Key contractors, Engineering companies, Energy Contractors, Manufacturer in Energy Field, Generator Manufactures End-Users.

#### MARKET SECTORS & DISTRIBUTION AREA

##### Power Generation

- Thermal
- Cogenerating
- Gas / Steam
- Nuclear

##### Oil&Gas - Chemicals

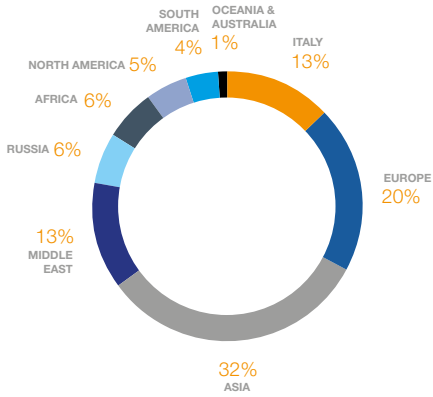
- Drilling & Extraction
- Refilling
- Chemical Industry

##### Industry

- Steel
- Paper
- Cement
- Water

##### Renewable

- Solar
- Hydro
- Biomass
- Wind





## QUALITY, SAFETY AND ENVIRONMENT

### QUALITY SYSTEM

The company operates in compliance with Quality System certified by CSQ since 1996. Today Quality System is certified according to ISO 9001:2015.

The company uses quality control documentation: Quality Plans, Quality Control Plans, Inspection Test Procedure (ITP), Operational Procedures, Specifications, Instructions. Such documentation is referred to the "Quality Manual" in accordance with UNI EN ISO 9001 international regulations.

### SAFETY

The company has achieved the certification of the Safety Management System in compliance with the rules OHSAS 18001 in November 2013. Today Safety System is certified according to OHSAS 18001:2007. The safety guideline defined by the Managing Director, is to mainly focus on Prevention, obtained through the analysis and elimination of the risk elements, considering this an essential factor in creating the best working condition possible as well as full compliance with applicable laws.



### ATTENTION FOR ENVIRONMENT

The company has achieved the certification of the Environmental Management System in compliance with the rules ISO 14001 in January 2013. Today Environment System is certified according to ISO 14001:2015.

The Business Guideline is the Continual Improvement with Integration of the Targets for Quality, Service, Costs, Technology, Management, Safety and Environment, in every Function and Role.

The environmental guideline, defined by the Managing Director, refers to the policy of the 3Rs: "Reduce", "Reuse", "Recycle".

## CONTACTS

### Headquarters and Factory:

via G. Rossini, 24  
37060 Castel d'Azzano (Verona) Italy  
Tel. +39 045 8546511  
Fax +39 045 8520214  
E-mail: [info@casagrande.vr.it](mailto:info@casagrande.vr.it)

### Production Branch:

Via Bortolazzi, 57  
37060 Castel d'Azzano (Verona) Italy

### Production Branch:

Contrada Piana Z.I.  
86019 Vinchiatturo (Campobasso) Italy  
Tel. +39 0874 340225  
Fax +39 0874 340227

[www.casagrande.vr.it](http://www.casagrande.vr.it)







[www.casagrande.vr.it](http://www.casagrande.vr.it)