



28-30 November 2023  
Paris, France

# Premium Exhibition Packages

Stand out from the crowd -  
minimum effort, maximum exposure!

[www.enlit-europe.com](http://www.enlit-europe.com)





# Stand out from the crowd



We have developed a stand out of the crowd package that allows you to spend less time on designing, decorating and organizing your stand without losing your corporate identity. And that's not all; it can also save you up to 15% on the costs of a custom built stand. You can order a full service package with the look and feel of a custom built stand at € 1060 per sqm.



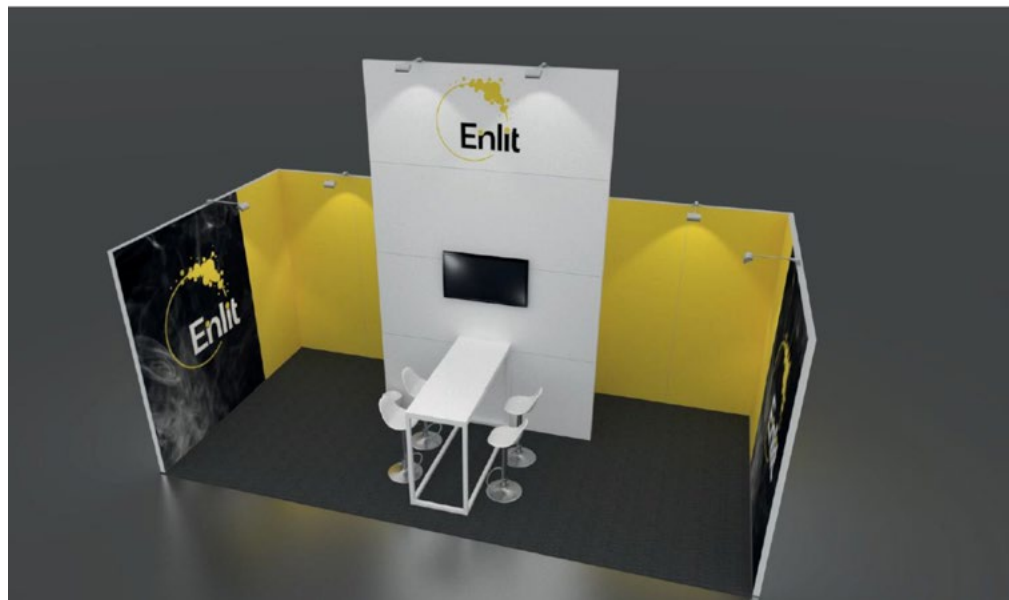
## BENEFITS OF THE PREMIUM PACKAGE:

1. Professional design at minimal extra costs
2. Customized stand using your corporate look & feel
3. No transport costs for stand materials included in contract
4. No need to source and coordinate stand building companies
5. Ready when you arrive
6. Complimentary pre-event and onsite assistance
7. Save costs for staff, travel and accommodation usually associated with build-up and break-down



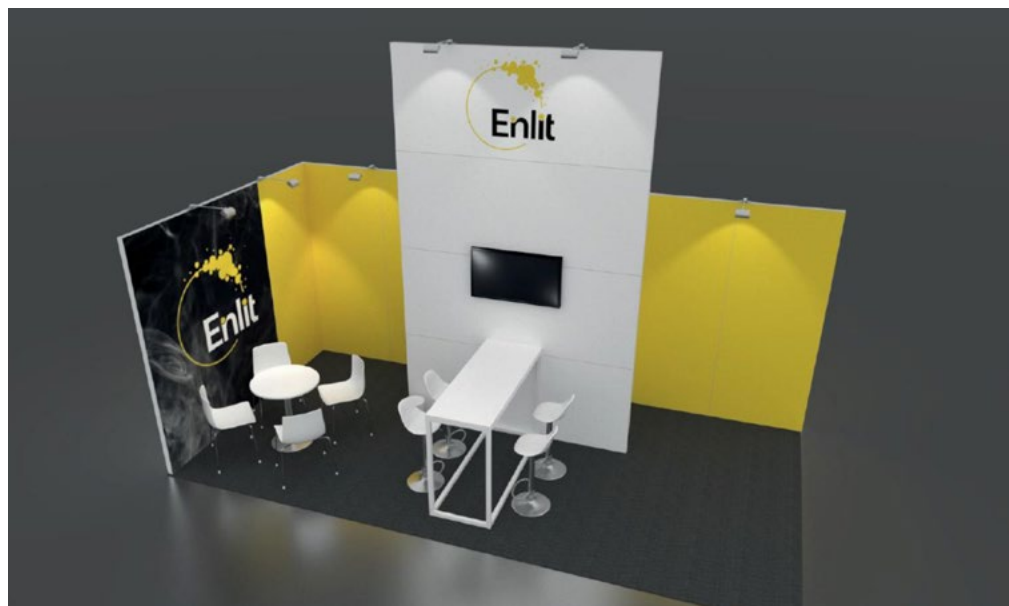


# Examples of Premium Stand design packages\*



## EXHIBITION STAND TYPE A: AISLE STAND

Aisle Stand A comprises of 2.5 meter high walls covered with foil in one of our **standard colours**. The 2.5 meter wide and 4.0 meter high white eye catcher with your logo and an integrated **43” LED Display**. Image branding is promoted through two full colour prints (each print: 2m wide x 2.5m high).



## EXHIBITION STAND B

Corner Stand B comprised of 2.5 meter high walls covered with foil in one of our **standard colours**. The 2.5 meter wide 4.0 meter high white eye catcher has your logo and an integrated **43” LED Display**. Image branding is promoted through one full colour print 2m wide x 2.5m high.



## EXHIBITION STAND C

Front Stand C, 3-sides open, comprised of 2.5 meter high walls covered with foil in one of our **standard colours**. The 2.5 meter wide 4.0 meter high white eye catcher has your logo and an integrated **43” LED Display**. Image branding is promoted through two full colour prints (each print: 2m wide x 2.5m high).

## INCLUDED IN THE FULL SERVICE PACKAGES:

- Carpet in your preferred colour
- Deluxe shell scheme material
- Graphics\*
- Electrical equipment
- Stylish furniture
- Audio Visual equipment
- Delivery Cleaning
- Daily Stand Cleaning

### Important:

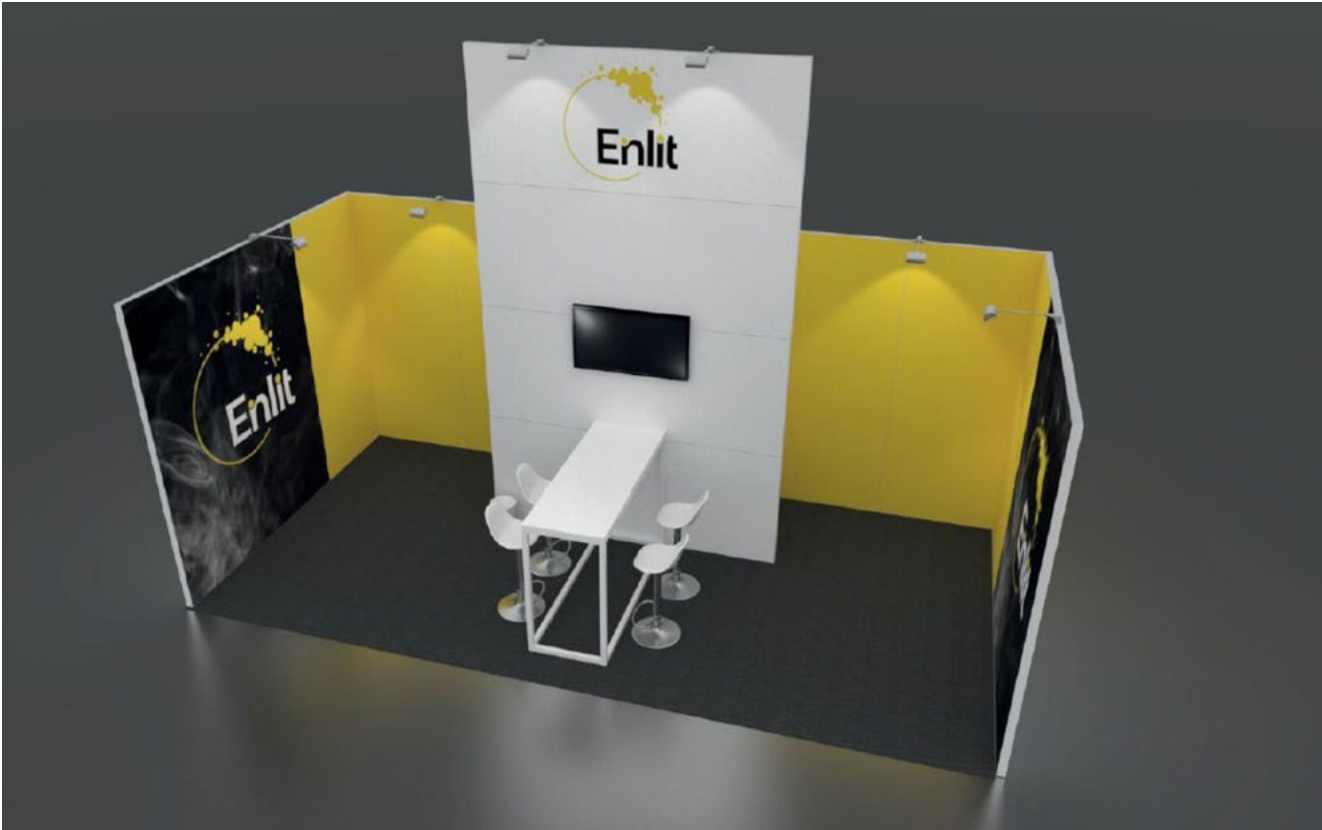
*\*The design of the graphics must be provided by yourself and submitted to Enlit Europe stand builder not later than 27th November 2023. Please be aware that in case of no receipt, the stand builder can't guarantee the delivery of the graphics.*





# Premium Exhibition Stands

## PREMIUM STAND A



Aisle Stand A comprises of 2.5 meter high walls covered with foil in one of our standard colours. The 2.5 meter wide and 4.0 meter high white eye catcher with your logo (1M x 2.5M) and an integrated **43" LED Display**. Image branding is promoted through two full colour prints (2.0 meter wide x 2.5 meter high).

Options for wall and carpet tile colours can be found on the last page of this document

### FURNITURE:

- 1 x white high table
- 4 x white stools
- 1 x waste bin
- 2x shelves in storage area
- 1x coat hooks in storage area

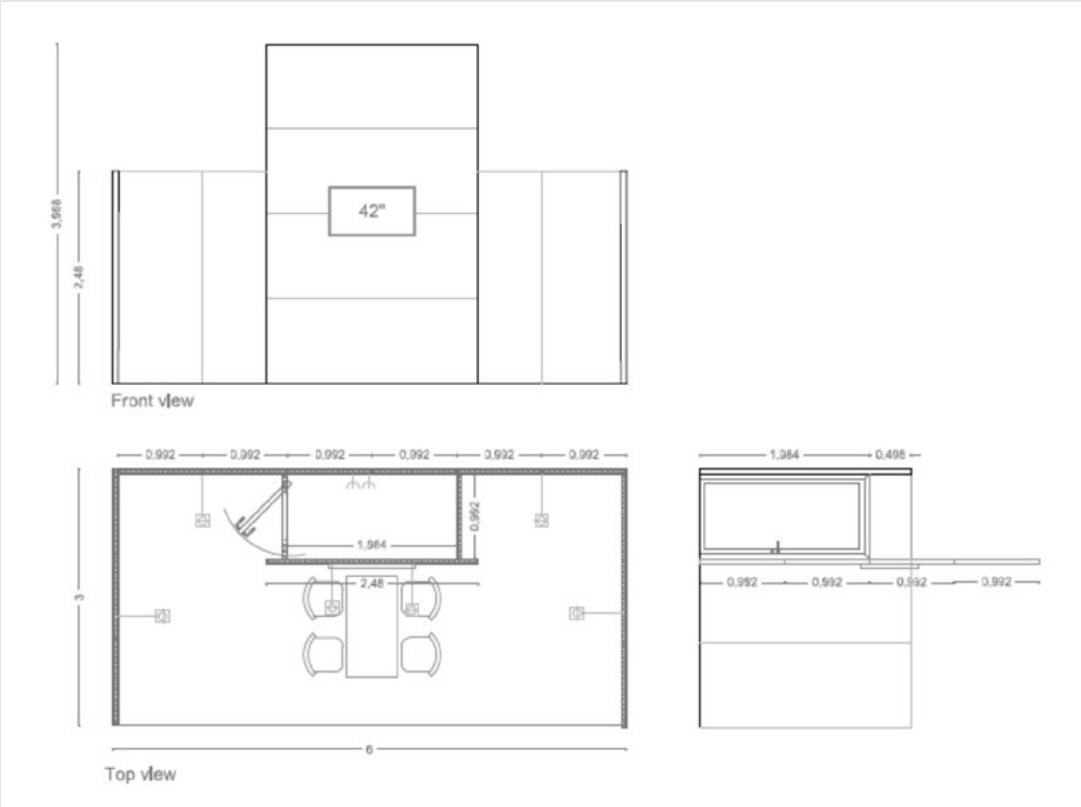
### ELECTRICAL EQUIPMENT:

#### Mains and Power

- 8 x LED spotlights on extension arms
- 1 x Double socket outlet
- 1 x socket for the flat screen
- 1kW Mains electrical connection
- Lockable Storage area 2m x 1m



## EXHIBITION LIGHTING AND MEASUREMENTS AS SHOWN IN FLOOR PLAN

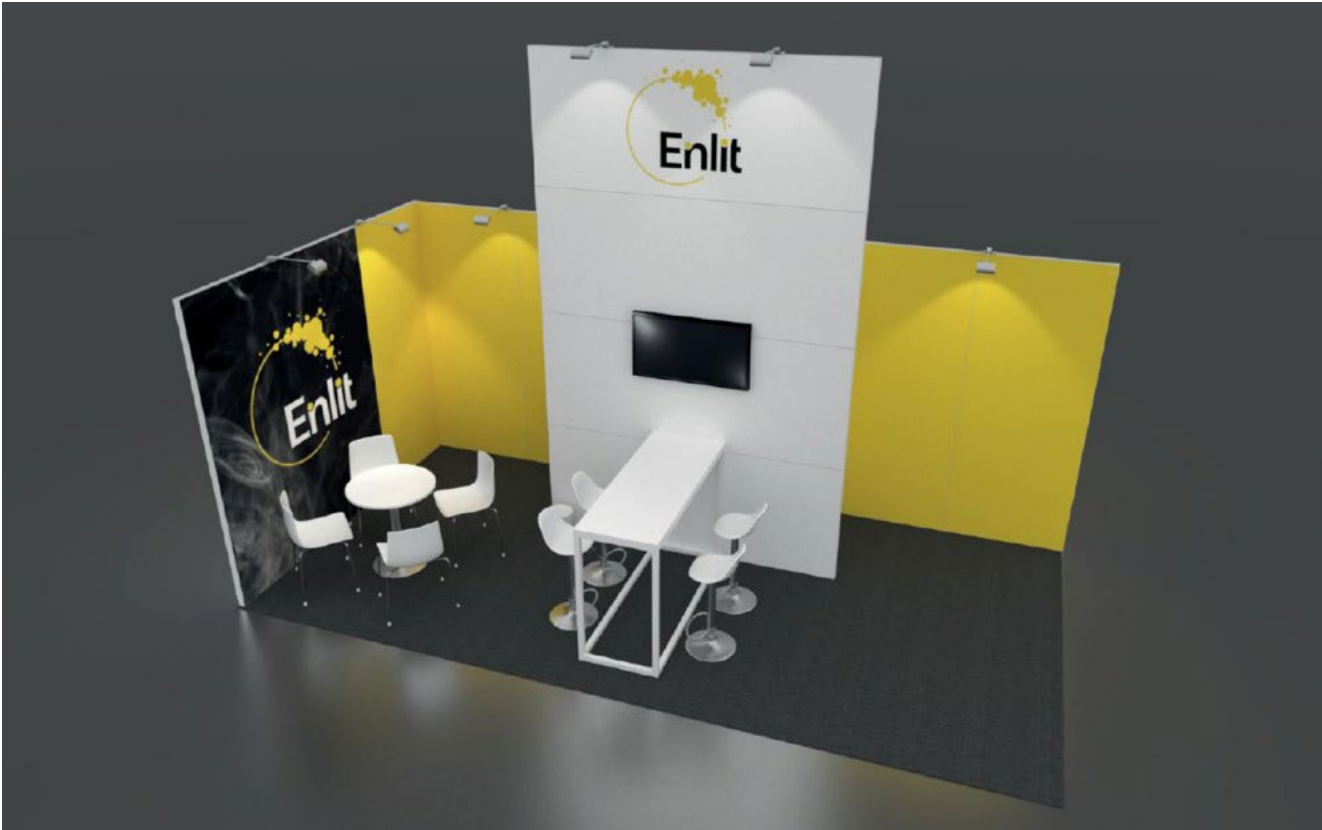


**Price Stand A per sqm: € 1060**  
Excluding 21% VAT



# Premium Exhibition Stands

## PREMIUM STAND B



Corner Stand B comprised of 2.5 meter high walls covered with foil in one of our standard colours. The 2.5 meter wide 4.0 meter high white eye catcher has your logo (1M x 2.5M) and an integrated **43" LED Display**. Image branding is promoted through a full colour print (2.0 meter wide x 2.5 meter high).

Options for wall and carpet tile colours can be found on the last page of this document

### FURNITURE:

- 1 x white high table
- 4 x white stools
- 1 x low round white table
- 4 x white chairs
- 2 x waste bins
- 2x shelves in storage area
- 1x coat hooks in storage area

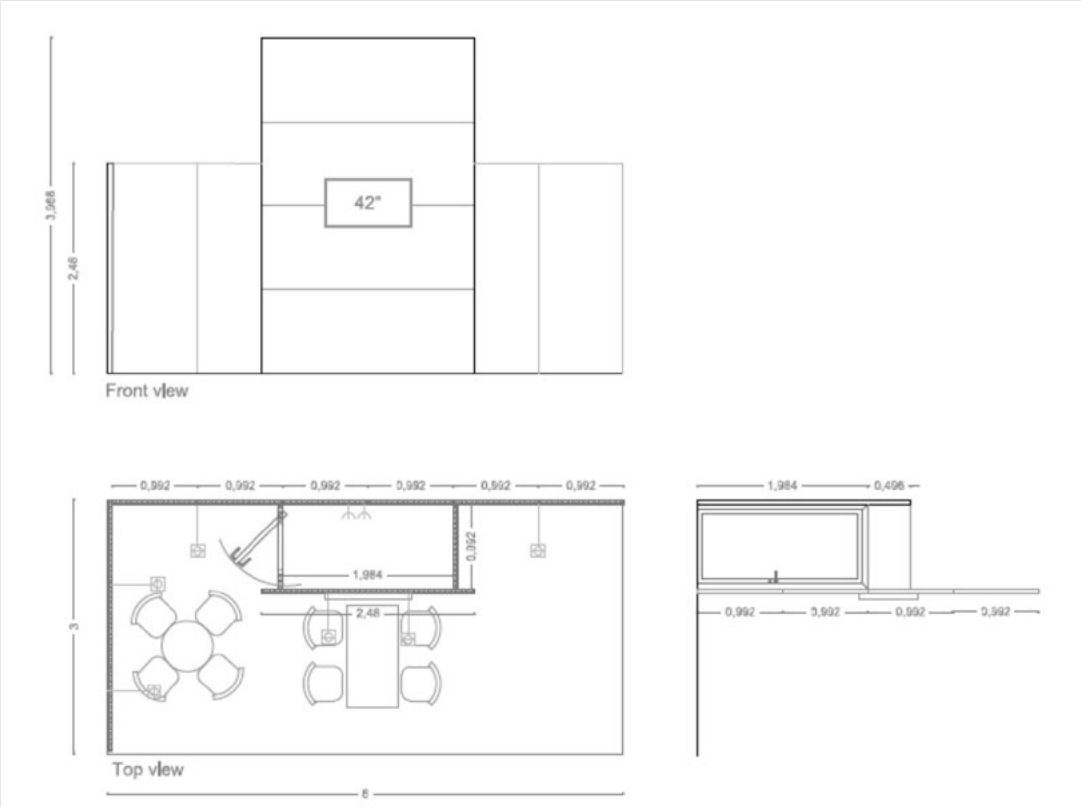
### ELECTRICAL EQUIPMENT:

#### Mains and Power

- 8 x LED spotlights on extension arms
- 1 x double socket outlet
- 1 x socket for the flat screen
- 1kW Mains electrical connection
- Lockable Storage area 2m x 1m



## EXHIBITION LIGHTING AND MEASUREMENTS AS SHOWN IN FLOOR PLAN

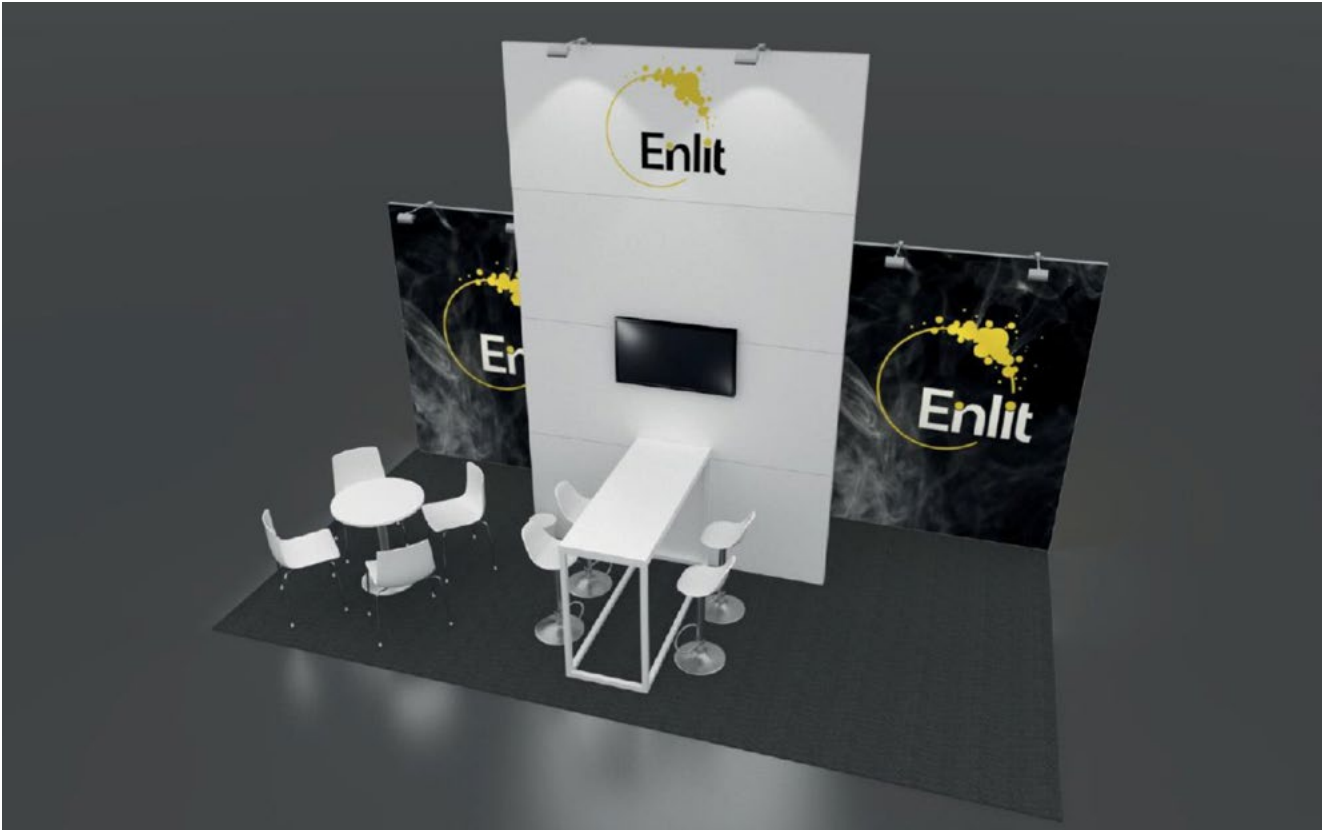


**Price Stand B per sqm: € 1060**  
Excluding 21% VAT



# Premium Exhibition Stands

## PREMIUM STAND C



Corner Stand B comprised of 2.5 meter high walls covered with foil in one of our standard colours. The 2.5 meter wide 4.0 meter high white eye catcher has your logo (1M x 2.5M) and an integrated **43" LED Display**. Image branding is promoted through two full colour prints (2.0 meter wide x 2.5 meter high).

Options for wall and carpet tile colours can be found on the last page of this document

### FURNITURE:

- 1 x white high table
- 4 x white stools
- 1 x low round white table
- 4 x white chairs
- 2 x waste bins
- 2x shelves in storage area
- 1x coat hooks in storage area

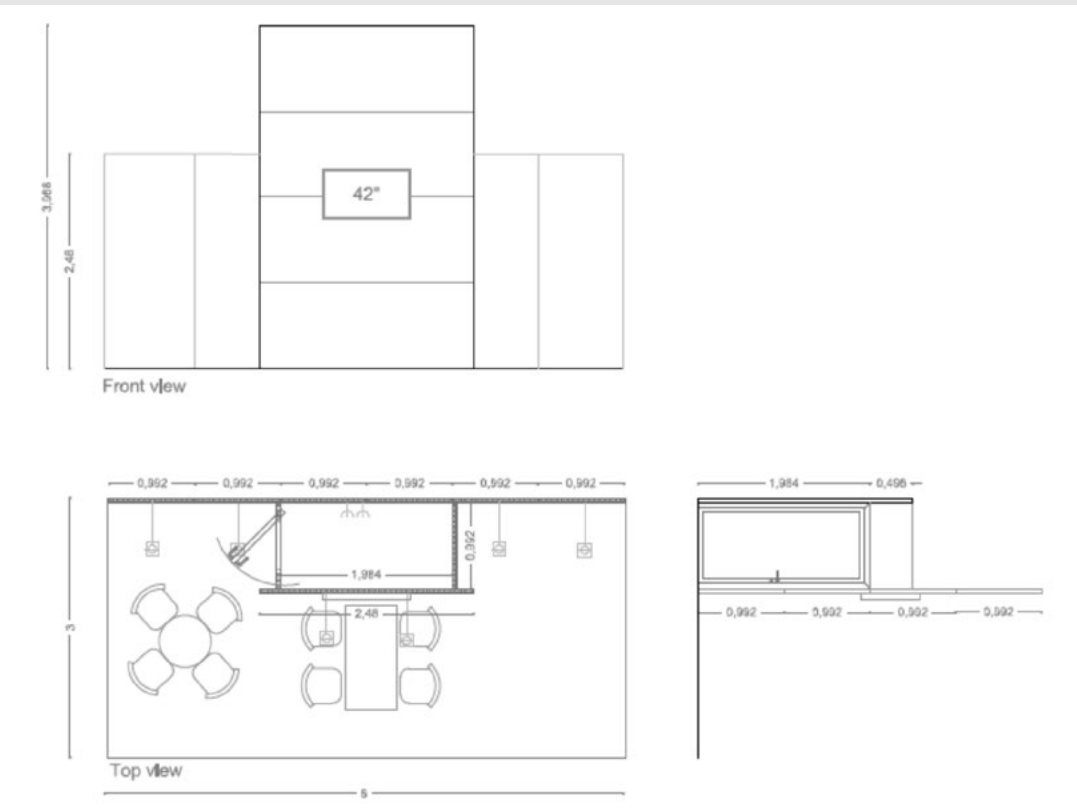
### ELECTRICAL EQUIPMENT:

#### Mains and Power

- 8 x LED spotlights on extension arms
- 1 x double socket outlet
- 1 x socket for the flat screen
- 1kW Mains electrical connection
- Lockable Storage area 2m x 1m



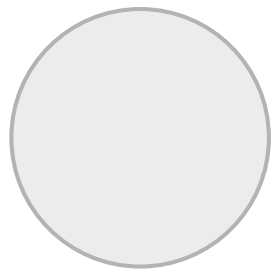
## EXHIBITION LIGHTING AND MEASUREMENTS AS SHOWN IN FLOOR PLAN



**Price Stand C per sqm: € 1060**  
Excluding 21% VAT

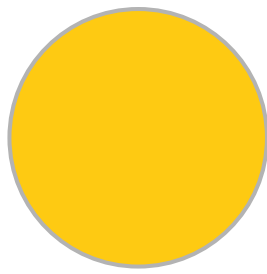
# Premium Stand

## CHOICE OF WALL PANEL COLOURS



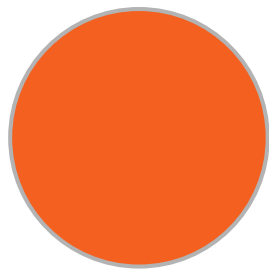
010

White



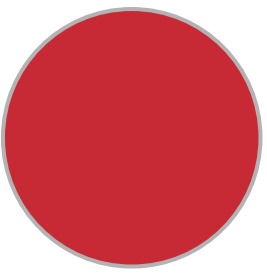
021

Yellow



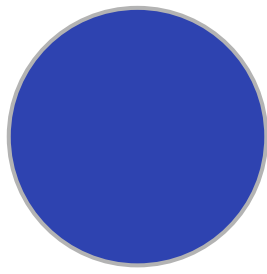
034

Orange



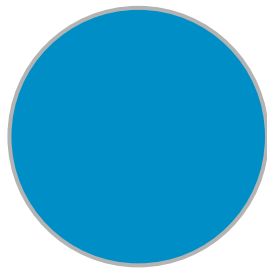
031

Red



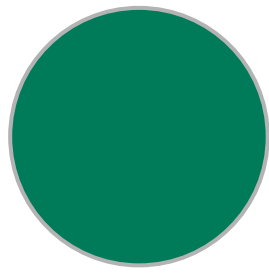
086

Brilliant Blue



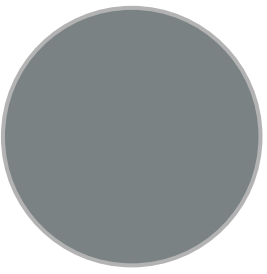
053

Light Blue



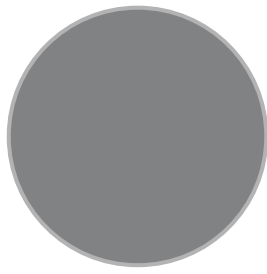
061

Green



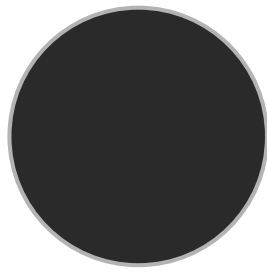
071

Grey



090

Silver grey



070

Black

## CHOICE OF CARPET COLOURS



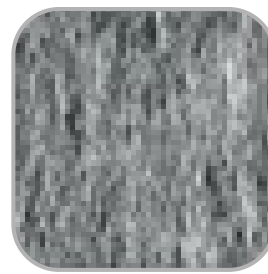
052

Anthracite



051

Dark grey



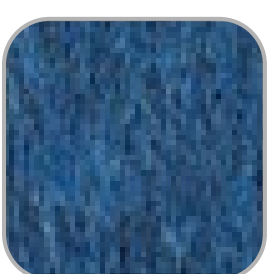
050

Light grey



042

Cashmere



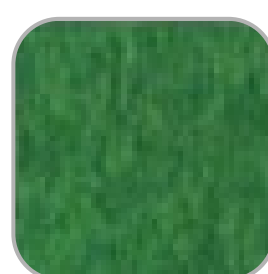
022

Blue



094

Purple



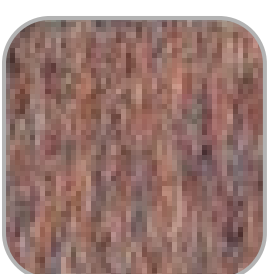
011

Grass green



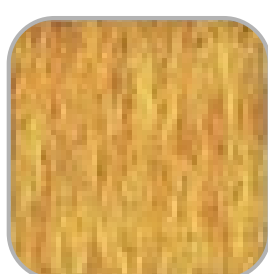
012

Bronze green



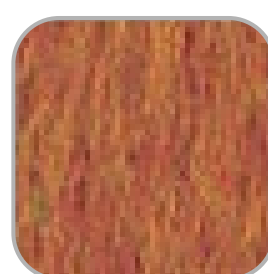
066

Copper



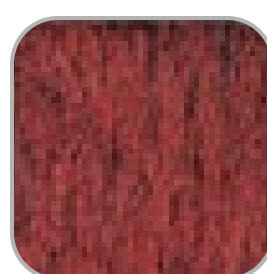
079

Yellow



031

Orange



030

Red