



# Company Profile from 2000

Over 350 workers, 150 professional engineers.  
75000m<sup>2</sup> workshop, 10 Million yearly output  
23 years experience in market  
ISO9001, CE, KEMA, UL, RoHS, MID ,  
DLEMS, IDIS certificated  
Good location ,convenient transportation  
with 2 hours reach Shanghai air/Sea port.

Tel:  
+8657388105559

Mail:  
[ytldz@ytl-e.com](mailto:ytldz@ytl-e.com)

Address:  
No.320, tongsheng road,  
Tongxiang,Zhejiang, P.R.China



# About YTL Metering

Established in 2000, Zhejiang Yongtailong Electronic Co., Ltd., has been focusing on the R&D and manufacturing of energy meters, and products export to more than 60 countries and regions.

## Mission

*"Make power measurement  
and control more convenient"*

## Company Spirit

*"Innovation, Trustworthiness,  
Cooperation, Efficiency"*

## R&D Capability

- 01 Adhere to the product leading strategy
- 02 Sales continue to grow at an annual rate of 20%
- 03 More than 60 new product projects per year
- 04 We have more than 500 patents in total

- 05 Equipped with CNAS lab

浙江永泰隆电子股份有限公司实验中心  
The Experiment Center of Zhejiang Yongtailong Electronic Co., Ltd.



中国认可  
国际互认  
检测  
TESTING  
CNAS L12672

中国合格评定国家认可委员会  
China National Accreditation Service for Conformity Assessment



# Certification



System Certification  
ISO9001, ISO14001



Verified Member  
IDIS, STS association



Product Certification  
UL, MID, KEMA, DLMS, CPA



## Purpose

*"We are constantly committed to researching, developing and promoting innovative products with unique value to create value for our customers"*

## Production Capacity

- \* Annual production capacity of 10 million units
- \* We have our own automation equipment department, to customize automated information assembly line



# Din Rail Meter Series



## EV charger

BYD Auto sells more than 250K EV&PHEV per month, Tesla also sells more than 80K EV per month. Which means the EV charger market will keep booming as well.

Products : DEM1 series, DEM4A series, DEM2 series for DC metering



## Products



### DEM1 series:

- **DEM1A series:**  
230V,100A,50/60Hz
- **DEM1E series:**  
230V,45A,50Hz

SO+RS485 MODBUS  
/DLT645 dual protocol,  
Multi-tariff function,  
with different  
measurements way



### DEM4A series:

- **DEM4A series:**  
3X230(400)V  
0,5-10(100)A  
50Hz

IR+RS485 MODBUS/  
DLT645 dual protocol+  
1 SO output+  
1 Signal input port+  
Multi-tariff function,  
with different measurements



### DEM2D series:

- **DEM2D series:**  
DC 5V~1000V  
Shunt connection method,  
the primary side current  
support up to 2000A  
Connection signal :75mV

RS485 MODBUS  
/DLT645 dual protocol  
Auxiliary power supply  
AC/DC,with Battery,  
with tariff ,with relay



# Din Rail Meter Series



## Renewable energy

In the next 8 years, green renewable energy will become mainstream and the solar industry will see explosive growth

Products : DDS353 series, DEM1 series, DEM2I series, DEM4A series, DEM2 series for DC metering



## Products

Bi-directional  
metering

DDS353/DEM1 series



CT type

DEM2I series



200ms  
refresh rate

DEM4A series



DC metering

DEM2D series



# Din Rail Meter Series

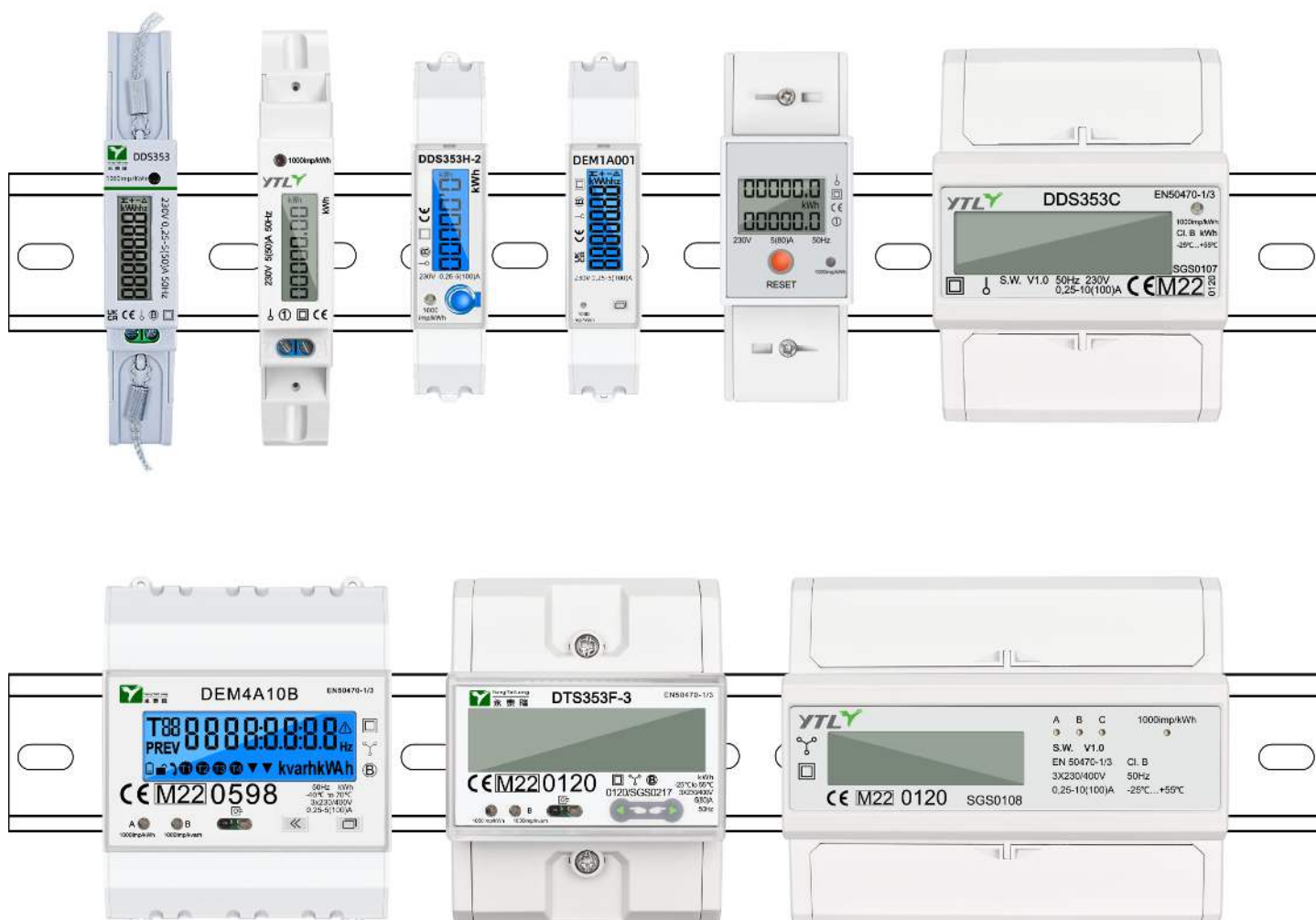
## MID certified

For European market we mainly focus on the din-rail series with 8 series, nearly 20 categories, and more than 400 varieties of electric energy meters.

Products : DDS353 series, DDS353J series, DDS353H series, DEM1 series, DDS353L series, DDS353C series, DEM4A series, DTS353F series, DTS353 series



## Products



# DDS353 (MID )

AC IP

The DDS353 Series Digital Power Meter works directly connected to a maximum load 50A AC circuit.

This meter has been MID B&D Certified by SGS UK, proving both it's accuracy and quality. This certification allows this model to be used for any sub-billing applications.

Application

Household, Industry



## Technical Parameters

Standard:	EN50470-1/3
Rated Voltage:	230V
Rated Current:	0,25-5(50)A
Impulse Constant:	1000 imp/kWh
Frequency:	50Hz/60Hz
Accuracy Class:	B
LCD Display:	LCD 5+2
Working Temperature:	-25 ~ 55°C
Power Consumption:	<10VA <1W
Average Humidity:	75%
Maximum Humidity:	95%
Start Current:	0.004Ib
Meter Dimensions:	116mm X 18mm X 63 mm



## Functions

DDS353	Basic version with import+export measurement
DDS353F	Import energy measurement only
DDS353F+R	Bi-directional measurement with total energy equal to import+export
DDS353F-R	Bi-directional measurement with total energy equal to import-export
DDS353AI	With import+export measurement ,meanwhile support Instantaneous parameter measurement
DDS353FI	With import only measurement ,meanwhile support Instantaneous parameter measurement
DDS353F+R+I	Bi-directional measurement with total energy equal to import+export, meanwhile support Instantaneous parameter measurement
DDS353F-R-I	Bi-directional measurement with total energy equal to import-export meanwhile support Instantaneous parameter measurement



# DEM1A (MID)

# DEM1E (NO MID)

## AC IP 2W

The DEM1A Series Digital Power Meter works directly connected to a maximum load 100A AC circuit.

The DEM1E Series Digital Power Meter works directly connected to a maximum load 45A AC circuit.

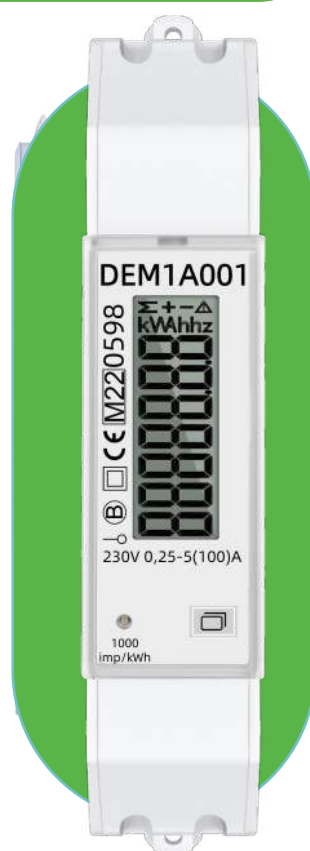
### Application

Household, Industry, EV charger station, renewable power generation



### Technical Parameters

Standard:	EN50470-1/3
Rated Voltage:	230V
Rated Current:	0,25-5(100)A DEM1A (MID) 0,25-5(45)A DEM1E
Impulse Constant:	1000 imp/kWh
Frequency:	50Hz
Accuracy Class:	B
Communication:	RS485\M-Bus\Canbus RS485 protocol Modbus/DLT645
LCD Display:	LCD 5+2
Working Temperature:	-25 ~ 70°C
Power Consumption:	<12VA <1W
Average Humidity:	75%
Maximum Humidity:	95%
Start Current:	0.004Ib
Meter Dimensions:	90mm X 18mm X 72 mm



### Functions

DEM1A001(MID)	Basic Type, no communication, SO output (variable constant), with different measurements way
DEM1E001	
DEM1A002(MID)	RS485 MODBUS/DLT645 dual protocol with different measurements way
DEM1E002	
DEM1A003(MID)	RS485 MODBUS/DLT645 dual protocol, Multi-tariff function, with different measurements way
DEM1E003	

# DDS353H (MID)

AC IP2W

DDS353H-1/2/3 is a single phase DIN Rail meter, 100A, which is a multi-functional meter for energy monitoring.

It is only 18mm width, but can support RS485 communication and comply with DIN EN 50022 standard, which is fit for the power distribution system for household and commercial.

## Application

Household, Industry, EV charger station



## Technical Parameters

Standard:	EN50470-1/3
Rated Voltage:	230V
Rated Current:	0,25-5(100)A
Impulse Constant:	100/1000/2000imp/kWh
Frequency:	50Hz
Accuracy Class:	B
Communication:	RS485 Modbus-RTU
LCD Display:	LCD 5+1
Working Temperature:	-25 ~ 55°C
Power Consumption:	≤8VA, ≤0.4W
Average Humidity:	75%
Maximum Humidity:	95%
Start Current:	0.004Ib
Meter Dimensions:	90mm X 18mm X 72 mm



## Functions

### Tariff, Active, Reactive, Demand

DDS353H-1	Basic Type, no communication, no Li-battery, no multi-tariff, with different measurements way
DDS353H-2	Basic Type, RS485, Modbus-RTU, no Li-battery, no multi-tariff, with different measurements way
DDS353H-3	Basic Type, RS485, Modbus-RTU, Li-battery, multi-tariff, with different measurements way

# DDS353J / K (MID / No MID)

AC IP2W

DDS353J / K is a din-rail single-phase electronic active meter , which complies the the international standards IEC62052-11, IEC 62053-21.It has the characteristics of good reliability, small volume, light weight, beautiful appearance, and easy installation.

Application

Household, Industry



## Technical Parameters

Standard:	EN50470-1/3
Rated Voltage:	230V
Rated Current:	0,25-5(40)A (MID) 0,25-5(50)A (No MID)
Impulse Constant:	1000 imp/kWh
Frequency:	50Hz
Accuracy Class:	B
LCD Display:	LCD 5+2
Working Temperature:	-20 ~ 65°C
Power Consumption:	≤8VA,≤0.4W
Average Humidity:	75%
Maximum Humidity:	95%
Start Current:	0.004Ib
Meter Dimensions:	118mm X 18mm X 63 mm



## Functions

- DIN RAIL standard installation size.
- Display current and voltage.
- active energy can be measured.
- Material of Meter housing: ABS fire resistant.
- Degree of Protection: IP51 (indoor meter).



# DDS353L (MID / No MID)

AC 1P2W

DDS353L is a din rail single phase two module energy meter with simple kWh measurement function.

## Application

Household, Industry, EV charger station



### Technical Parameters

Standard:	EN50470-1/3
Rated Voltage:	230V
Rated Current:	5(80) A
Impulse Constant:	1000 imp/kWh
Frequency:	50Hz/60Hz
Accuracy Class:	B
Communication:	RS485 protocol Modbus (MID) No communication (NO MID)
Working Temperature:	-00 ~ +65°C
Power Consumption:	<8VA <0.4W
Average Humidity:	75%
Maximum Humidity:	95%
Start Current:	0.004Ib
Meter Dimensions:	100mm X 36mm X 65 mm



### Functions

Energy Measurement, Temporary power can be reset to zero

# DEM2D (No MID)

# DC 1P2W

DEM2D Series is DC metering device that uses shunt sampling. Support RS485 communication, DLT 645/MODBUS protocol. Rail-mounted installation has the characteristics of good reliability, small size, beautiful appearance, and convenient installation.

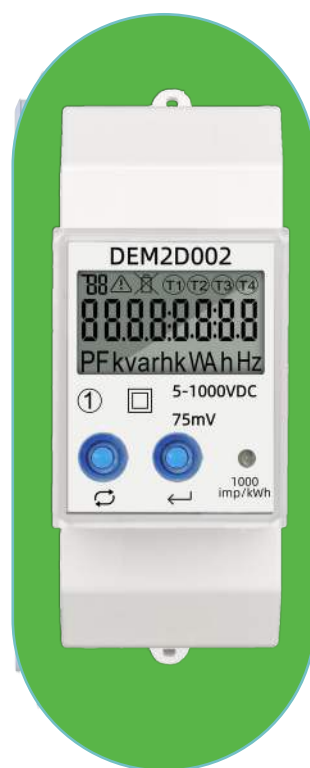
## Application

Renewable power generation, DC screen  
DC charger station, Communication base station



## Technical Parameters

Standard:	EN50470-1/3
Rated Voltage:	DC 5-1000V
Rated Current:	75mV Shunt 2000A
Impulse Constant:	1000 imp/kWh
Frequency:	50Hz
Accuracy Class:	B
Communication:	RS485 RS485 protocol Modbus/DLT645
LCD Display:	LCD 6+2
Working Temperature:	-40 ~ +70°C
Power Consumption:	<12VA <1W
Average Humidity:	75%
Maximum Humidity:	95%
Start Current:	0.004Ib
Meter Dimensions:	90mm X 35.9mm X 73 mm



## Functions

Tariff, Event alarm, Firmware upgrade

DEM2D002	Auxiliary power supply AC/DC, No Battery, No tariff, No relay
DEM2D102	Auxiliary power supply AC/DC, with Battery, with tariff, with relay
DEM2D003	Auxiliary power supply DC, No Battery, No tariff, No relay
DEM2D103	Auxiliary power supply DC, with Battery, with tariff, with relay

# DDS353B (MID)

# AC IP2W

This meter has been MID B&D Certified by SGS UK, proving both its accuracy and quality. This certification allows this model to be used for any sub-billing applications.

## Application

## Household, Industry



### Technical Parameters

Standard:	EN50470-1/3
Rated Voltage:	230V
Rated Current:	0,25-5(80)A
Impulse Constant:	1000 imp/kWh
Frequency:	50Hz/60Hz
Accuracy Class:	B
LCD Display:	LCD 6+2
Working Temperature:	-25 ~ 55°C
Power Consumption:	<10VA <1W
Average Humidity:	75%
Maximum Humidity:	95%
Start Current:	0.004Ib
Meter Dimensions:	115mm X 78mm X 65 mm



### Functions

Energy Measurement  
Communication RS485  
Protocol Modbus



# DDS353C (MID / No MID)

AC 1P4W

This is our another single phase Din-rail meter which could reach 100A. Prevent reverse tamper and indication.

Application Household, Industry



## Technical Parameters

Standard:	EN50470-1/3
Rated Voltage:	230V
Rated Current:	5(80) A
Impulse Constant:	1000 imp/kWh
Frequency:	50Hz/60Hz
Accuracy Class:	B
Communication:	No communication (MID) RS485 protocol Modbus(NO MID)
Working Temperature:	-25 ~ +55°C
Power Consumption:	<1W
Average Humidity:	75%
Maximum Humidity:	95%
Start Current:	0.004Ib
Meter Dimensions:	100mm X 76mm X 65 mm



## Functions

### Energy Measurement

DDS353C(MID) No Communication, Active power measurement

DDS353C(No MID) RS485 Communication, Absolute value measurement

# DEM2I (No MID)

# AC 3P2W

DEM2I Series is AC metering device.

Support RS485 communication, DLT 645/MODBUS protocol. Rail-mounted installation has the characteristics of good reliability, small size, beautiful appearance, and convenient installation.

## Application

Household, Industry, EV charger station, renewable power generation



## Technical Parameters

Standard:	EN50470-1/3
Rated Voltage:	3X230(400)V
Rated Current:	0.1-5(6)A
Impulse Constant:	10000imp/kWh(LED) 10000imp/kWh(SO)
Frequency:	50Hz/60Hz
Accuracy Class:	A
Communication:	RS485 RS485 protocol Modbus/DLT645
LCD Display:	LCD 6+2
Working Temperature:	-40 ~ +70°C
Power Consumption:	<12VA <1W
Average Humidity:	75%
Maximum Humidity:	95%
Start Current:	0.004Ib
Meter Dimensions:	90mm X 36mm X 73 mm



## Functions

Metering method can be set, Tariff, Active, Reactive, Demand

DEM2I103 RS485 MODBUS/DLT645 dual protocol, Multi-tariff function, with different measurements way

# DEM4A (MID)

# AC 3P4W

The DEM4A Series Digital Power Meter works directly connected to a maximum load 100A AC circuit .

This meter will be applied the MID B&D Certified by SGS, proving both it's accuracy and quality. This certification allows this model to be used for any sub-billing application

## Application

Household, Industry, EV charger station, renewable power generation



## Technical Parameters

Standard:	EN50470-1/3
Rated Voltage:	3X230(400)V
Rated Current:	0,25-5(100)A
Impulse Constant:	1000 imp/kWh
Frequency:	50Hz
Accuracy Class:	B
Communication:	RS485\M-Bus\Canbus RS485 protocol Modbus/DLT645
LCD Display:	LCD 6+2
Working Temperature:	-40 ~ +70°C
Power Consumption:	<12VA <1W
Average Humidity:	75%
Maximum Humidity:	95%
Start Current:	0.004Ib
Meter Dimensions:	90mm X 71.5mm X 72 mm



## Functions

DEM4A009	Basic Type , With IR, 2 SO output (variable constant), with different measurements way
DEM4A00B	IR + RS485 MODBUS/DLT645 +dual protocol+2 SO output (variable constant) with different measurements
DEM4A10B	IR+RS485 MODBUS/DLT645 dual protocol+2 SO output (variable constant) + Multi-tariff function,with different measurements
DEM4A20B	IR + RS485 MODBUS/DLT645 +dual protocol+1 SO output (variable constant) +1 Signal input port,with different measurements
DEM4A30B	IR+RS485 MODBUS/DLT645 dual protocol+1 SO output (variable constant) +1 Signal input port+ Multi-tariff function,with different measurements



# KD03 Energy meter

## AC 3P4W

Three phase four wire electricity meter, direct type/CT type optional. Adopting a 4-module guide rail installation method, it has a small volume, compact structure, and convenient installation, suitable for various application scenarios.

Application

Household, Industry



### Technical Parameters

Standard:	EN50470-1/3
Rated Voltage:	3×230V/400V
Rated Current:	0,25-5(80)A 1.5 ( 6 ) A
Impulse Constant:	800 imp/kWh 12000 imp/kWh
Frequency:	50Hz/60Hz
Accuracy Class:	B
LCD Display:	LCD 6+2
Working Temperature:	-40 ~ 70°C
Power Consumption:	<10VA <1W
Average Humidity:	75%
Maximum Humidity:	95%
Start Current:	0.004Ib
Meter Dimensions:	100mm X 76mm X 65 mm



### Functions

Energy Measurement

# DTS353C (MID)

AC 3P4W

This meter has been MID B&D Certified by SGS UK, proving both its accuracy and quality. This certification allows this model to be used for any sub-billing applications.

Application

Household, Industry



## Technical Parameters

Standard:	EN50470-1/3
Rated Voltage:	3×230V/400V
Rated Current:	0,25-5(80)A
Impulse Constant:	800 imp/kWh
Frequency:	50Hz/60Hz
Accuracy Class:	B
LCD Display:	LCD 6+2
Working Temperature:	-25 ~ 55°C
Power Consumption:	<10VA <1W
Average Humidity:	75%
Maximum Humidity:	95%
Start Current:	0.004Ib
Meter Dimensions:	100mm X 76mm X 65 mm



## Functions

Energy Measurement

# KG01 Energy meter

AC 3P4W

(MID)

This is a simple three phase seven module Din-rail meter. It has RS485 communication which could meet the protocol MODBUS. It is very popular in the worldwide for its novel appearance, good quality and reasonable price.

Application

Household, Industry, machine



## Technical Parameters

Standard:	EN50470-1/3
Rated Voltage:	230V
Rated Current:	0,5-10(100)A
Impulse Constant:	1000 imp/kWh
Frequency:	50Hz/60Hz
Accuracy Class:	B
LCD Display:	LCD 6+1
Working Temperature:	-25 ~ 55°C
Power Consumption:	<10VA <1W
Average Humidity:	75%
Maximum Humidity:	95%
Start Current:	0.004Ib
Meter Dimensions:	100mm X 122mm X 65mm



## Functions

Energy Measurement  
Communication RS485  
Protocol Modbus



# K302 APS Prepaid meter AC 1P2W

Single phase two wire APS prepaid energy meter, with external battery replacement support, small size, and fully functional, suitable for various application scenarios

## Application

Household, Industry,  
Renewable power generation



## Technical Parameters

Standard:	EN50470-1/3
Rated Voltage:	230V
Rated Current:	0,25-5(100)A
Impulse Constant:	1000 imp/kWh
Frequency:	50Hz/60Hz
Accuracy Class:	B
LCD Display:	LCD 6+2
Working Temperature:	-40 ~ 70°C
Power Consumption:	<10VA <1W
Average Humidity:	75%
Maximum Humidity:	95%
Start Current:	0.004Ib
Meter Dimensions:	90mm X 54mm X 72 mm



## Functions

APS prepayment, Tariff, Active, Reactive, Neutral line measurement, Load profile, Event record, Event alarm, Load control, Firmware upgrade, temperature detection

Communication RS485\Bluetooth\4G

Protocol IDIS

# K214 STS Prepaid meter AC 1P2W

This is a single-phase two wire STS prepaid energy meter. Equipped with remote communication function, it can achieve remote recharge, real-time data monitoring, analysis and management, and improve power grid quality. Can be equipped with CIU.

Application

Household, Industry



## Technical Parameters

Standard:	IEC62052-11\ IEC62053-21
Rated Voltage:	230V
Rated Current:	0,25-5(100)A
Impulse Constant:	1000 imp/kWh
Frequency:	50Hz/60Hz
Accuracy Class:	Active : 1.0
LCD Display:	NO
Working Temperature:	-20 ~ 70°C
Power Consumption:	<10VA <1W
Average Humidity:	75%
Maximum Humidity:	95%
Start Current:	0.004Ib
Meter Dimensions:	142mm X 49mm X 87mm



## Functions

STS prepayment, Active, Reactive, support for tariff mode, Event record, Event alarm, Neutral line metering, Firmware upgrade, Load control  
Communication RS485\G3 PLC\Wifine  
Protocol DLMS

# K217 Energy meter

AC 1P2W

Single phase two wire APS prepaid energy meter, small size, and fully functional, suitable for various application scenarios

## Application

Household, Industry,  
Renewable power generation



## Technical Parameters

Standard:	IEC62052-11\ IEC62053-21
Rated Voltage:	230V
Rated Current:	0,25-5(60)A
Impulse Constant:	1600 imp/kWh
Frequency:	50Hz/60Hz
Accuracy Class:	B
LCD Display:	LCD 5+1
Working Temperature:	-40 ~ 70°C
Power Consumption:	<10VA <1W
Average Humidity:	75%
Maximum Humidity:	95%
Start Current:	0.004Ib
Meter Dimensions:	90mm X 36mm X 72 mm



## Functions

Energy Measurement



# K403 APS Prepaid meter AC 1P2W

Single phase two wire APS prepaid energy meter, small size, and fully functional, suitable for various application scenarios

## Application

Household, Industry,  
Renewable power generation



## Technical Parameters

Standard:	EN50470-1/3
Rated Voltage:	230V
Rated Current:	0,25-5(60)A
Impulse Constant:	1600 imp/kWh
Frequency:	50Hz/60Hz
Accuracy Class:	B
LCD Display:	LCD 6+2
Working Temperature:	-25 ~ 70°C
Power Consumption:	<10VA <1W
Average Humidity:	75%
Maximum Humidity:	95%
Start Current:	0.004Ib
Meter Dimensions:	100mm X 76mm X 65 mm



## Functions

APS prepayment, Event alarm, Load control  
Communication RS485\GPRS  
Protocol YTL-Bus

# KE05 Smart meter

AC 3P4W

Single phase two line guide rail smart energy meter, RS485 communication, GPRS communication optional, small size, full functionality, easy installation, suitable for various application scenarios.

Application

Household, Industry, machine



## Technical Parameters

Standard:	IEC62052-11\ IEC62053-21
Rated Voltage:	230V
Rated Current:	0,5-10(80)A
Impulse Constant:	1000 imp/kWh
Frequency:	50Hz/60Hz
Accuracy Class:	B
LCD Display:	LCD 6+2
Working Temperature:	-20 ~ 70°C
Power Consumption:	<10VA <2W
Average Humidity:	75%
Maximum Humidity:	95%
Start Current:	0.004Ib
Meter Dimensions:	90mm X 90mm X 72 mm



## Functions

Metering method can be set, Tariff, Active, Reactive, Demand, Load profile, Event record, Event alarm, Load control, freezing function, Load working time, Firmware upgrade  
Communication RS485\4G  
Protocol Modbus\DLT645-2007

# K011 STS Prepaid meter AC 1P2W

This is a single-phase two wire STS prepaid energy meter with IR communication, which can be used for parameter setting and data reading.

Application

Household, Industry



## Technical Parameters

Standard:	IEC62052-11\ IEC62053-21
Rated Voltage:	230V
Rated Current:	0,25-5(60)A
Impulse Constant:	1000 imp/kWh
Frequency:	50Hz/60Hz
Accuracy Class:	Active : 1.0
LCD Display:	LCD 6+2
Working Temperature:	-20 ~ 70°C
Power Consumption:	<10VA <1W
Average Humidity:	75%
Maximum Humidity:	95%
Start Current:	0.004Ib
Meter Dimensions:	172mm X 125mm X 55 mm



## Functions

STS prepayment, Event alarm,  
Energy Measurement, Load control  
Communication IR Protocol IEC62056-21

# KA10 STS Prepaid meter AC 3P4W

This is a three phase four wire STS prepaid energy meter with RS485 communication, which can be used for parameter setting and data reading.

Application

Household, Industry



## Technical Parameters

Standard:	IEC62052-11\ IEC62053-21
Rated Voltage:	3×230/400V
Rated Current:	0,25-5(100)A
Impulse Constant:	800 imp/kWh
Frequency:	50Hz/60Hz
Accuracy Class:	Active : 1.0    Reactive : 2.0
LCD Display:	LCD 6+2
Working Temperature:	-20 ~ 70°C
Power Consumption:	<10VA <1W
Average Humidity:	75%
Maximum Humidity:	95%
Start Current:	0.004Ib
Meter Dimensions:	268mm X 190mm X 55 mm



## Functions

STS prepayment, Active, Reactive, support for tariff mode, Event record, Event alarm, Neutral line sampling, Firmware upgrade, Load control  
Communication RS485    Protocol DLMS



# KA10 STS Prepaid meter AC 2P3W

This is a two phase three wire STS prepaid energy meter. IR communication, which can be used for parameter setting and data reading.

Application

Household, Industry



## Technical Parameters

Standard:	IEC62052-11\ IEC62053-21
Rated Voltage:	2×1270/220V
Rated Current:	0,25-5(100)A
Impulse Constant:	1000 imp/kWh
Frequency:	50Hz/60Hz
Accuracy Class:	Active : 1.0    Reactive : 2.0
LCD Display:	LCD 6+2
Working Temperature:	-20 ~ 70°C
Power Consumption:	<10VA <1W
Average Humidity:	75%
Maximum Humidity:	95%
Start Current:	0.004Ib
Meter Dimensions:	187mm X 150mm X 62mm



## Functions

STS prepayment, Event alarm,  
Energy Measurement, Load control  
Communication IR    Protocol IEC62056-21

# K040 STS Prepaid meter

# AC 1P2W

This is a single-phase two wire STS prepaid energy meter. Equipped with remote communication function, it can achieve remote recharge, real-time data monitoring, analysis and management, and improve power grid quality. Can be equipped with CIU.

## Application

## Household, Industry



### Technical Parameters

Standard:	IEC62052-11\ IEC62053-21
Rated Voltage:	230V
Rated Current:	0,25-5(100)A
Impulse Constant:	1000 imp/kWh
Frequency:	50Hz/60Hz
Accuracy Class:	Active : 1.0
LCD Display:	LCD 6+2
Working Temperature:	-20 ~ 70°C
Power Consumption:	<10VA <1W
Average Humidity:	75%
Maximum Humidity:	95%
Start Current:	0.004Ib
Meter Dimensions:	194mm X 117mm X 58mm



### Functions

STS prepayment, Active, Reactive, support for tariff mode, Event record, Event alarm, Neutral line metering, Firmware upgrade, Load control  
Communication RS485\RF\GPRS\G3 PLC\Wifine  
Protocol DLMS

# KA19 STS Prepaid meter AC 3P4W

This is a three phase four wire STS prepaid energy meter with RS485 communication, which can be used for parameter setting and data reading.

Application

Household, Industry



## Technical Parameters

Standard:	IEC62052-11\ IEC62053-21
Rated Voltage:	3×230/400V
Rated Current:	0,25-5(100)A
Impulse Constant:	800 imp/kWh
Frequency:	50Hz/60Hz
Accuracy Class:	Active : 1.0    Reactive : 2.0
LCD Display:	LCD 6+2
Working Temperature:	-20 ~ 70°C
Power Consumption:	<10VA <1W
Average Humidity:	75%
Maximum Humidity:	95%
Start Current:	0.004Ib
Meter Dimensions:	249mm X 171mm X 58.5 mm



## Functions

STS prepayment, Active, Reactive, support for Tariff mode, Event record, Event alarm, Neutral line sampling, Firmware upgrade, Load control  
Communication RS485\GPRS  
Protocol DLMS

# K019 STS Prepaid meter AC 1P2W

This is a single-phase two wire STS prepaid energy meter. Equipped with remote communication function, it can achieve remote recharge, real-time data monitoring, analysis and management, and improve power grid quality. Can be equipped with CIU.

Application

Household, Industry



## Technical Parameters

Standard:	IEC62052-11\ IEC62053-21
Rated Voltage:	230V
Rated Current:	0,25-5(80)A
Impulse Constant:	1000 imp/kWh
Frequency:	50Hz/60Hz
Accuracy Class:	Active : 1.0
LCD Display:	LCD 6+2
Working Temperature:	-20 ~ 70°C
Power Consumption:	<10VA <1W
Average Humidity:	75%
Maximum Humidity:	95%
Start Current:	0.004Ib
Meter Dimensions:	207mm X 122mm X 55.5 mm



## Functions

STS prepayment, Active, Reactive, support for tariff mode, Event record, Event alarm, Neutral line metering, Firmware upgrade, Load control  
Communication RS485\G3 PLC  
Protocol DLMS



# K019 STS Prepaid meter

AC 1P2W

This is a single-phase two wire STS prepaid electricity meter. Equipped with remote communication function, the communication module supports on-site replacement, and can achieve remote charging and real-time data monitoring.

Application

Household, Industry



## Technical Parameters

Standard:	IEC62052-11\ IEC62053-21
Rated Voltage:	230V
Rated Current:	0,25-5(60)A
Impulse Constant:	1000 imp/kWh
Frequency:	50Hz/60Hz
Accuracy Class:	Active : 1.0
LCD Display:	LCD 6+2
Working Temperature:	-20 ~ 70°C
Power Consumption:	<10VA <1W
Average Humidity:	75%
Maximum Humidity:	95%
Start Current:	0.004Ib
Meter Dimensions:	207mm X 122mm X 74.5mm



## Functions

STS prepayment, Active, Reactive, support for tariff mode, Event record, Event alarm, Neutral line metering, Firmware upgrade, Load control  
Communication RS485, GPRS  
Protocol DLMS

# KA17 STS Prepaid meter AC 3P4W

This is a three phase four wire STS prepaid energy meter. Equipped with remote communication function, it can achieve remote recharge, real-time data monitoring, analysis and management, and improve power grid quality. Can be equipped with CIU.

Application

Household, Industry



## Technical Parameters

Standard:	IEC62052-11\ IEC62053-21
Rated Voltage:	3×230/400V
Rated Current:	0,25-5(100)A
Impulse Constant:	800 imp/kWh
Frequency:	50Hz/60Hz
Accuracy Class:	Active : 1.0    Reactive : 2.0
LCD Display:	LCD 6+2
Working Temperature:	-20 ~ 70°C
Power Consumption:	<10VA <1W
Average Humidity:	75%
Maximum Humidity:	95%
Start Current:	0.004Ib
Meter Dimensions:	303mm X 183mm X 79 mm



## Functions

STS prepayment, Active, Reactive, support for tariff mode, Event record, Event alarm, Neutral line sampling, Firmware upgrade, Load control  
Communication RS485\G3 PLC\Wifine\4G  
Protocol DLMS

# K029 Smart meter

# AC 1P2W

This is a single-phase two wire smart meter, with a modular communication design that supports on-site replacement, which is an important part of the AMI solution. Remote communication, real-time monitoring, data analysis, etc. provide data support for improving the quality of the power grid.

## Application

## Household, Industry



### *Technical Parameters*

Standard:	IEC62052-11\ IEC62053-21
Rated Voltage:	230V
Rated Current:	0,25-5(100)A
Impulse Constant:	3200 imp/kWh
Frequency:	50Hz/60Hz
Accuracy Class:	Active : 1.0    Reactive : 2.0
LCD Display:	LCD 6+2
Working Temperature:	-20 ~ 70°C
Power Consumption:	<10VA <1W
Average Humidity:	75%
Maximum Humidity:	95%
Start Current:	0.004Ib
Meter Dimensions:	202mm X 115mm X 75mm



### *Functions*

Active, Reactive, Tariff, Load profile, Event record,  
Event alarm, Neutral line metering, Firmware  
upgrade, Load control  
Communication RS485, G3 PLC, GPRS, RF  
Protocol IDIS

# KA09 Smart meter

# AC 3P4W

This is a three-phase four wire smart meter, with a modular communication design that supports on-site replacement, which is an important part of the AMI solution. Remote communication, real-time monitoring, data analysis, etc. provide data support for improving the quality of the power grid.

## Application

## Household, Industry



### Technical Parameters

Standard:	IEC62052-11\ IEC62053-21
Rated Voltage:	3×230/400V
Rated Current:	0,25-5(100)A 1.5(10)A
Impulse Constant:	3200 imp/kWh 12000 imp/kWh
Frequency:	50Hz/60Hz
Accuracy Class:	Active : 1.0    Reactive : 2.0
LCD Display:	LCD 6+2
Working Temperature:	-20 ~ 70°C
Power Consumption:	<10VA <1W
Average Humidity:	75%
Maximum Humidity:	95%
Start Current:	0.004Ib
Meter Dimensions:	292mm X 172mm X 87.5mm



### Functions

Active, Reactive, Tariff, Load profile, Event record,  
Event alarm, Neutral line sampling, Firmware  
upgrade, Load control  
Communication RS485, G3 PLC\GPRS\RF  
Protocol IDIS



# K040 Multifunctional energy meter

AC 1P2W

This is an anti-tamper meter with various of tamper and alarm functions. This meter is favored by customers with the features of high accuracy, various anti-tampering functions and competitive cost performance. In addition, this meter is designed strictly according to IEC62052 and IEC62053 standard.

Application

Household, Industry



## Technical Parameters

Standard:	IEC62052-11\ IEC62053-21
Rated Voltage:	230V
Rated Current:	0,25-5(100)A
Impulse Constant:	1600 imp/kWh
Frequency:	50Hz/60Hz
Accuracy Class:	Active : 1.0    Reactive : 2.0
LCD Display:	LCD 6+2
Working Temperature:	-25 ~ 70°C
Power Consumption:	<10VA <1W
Average Humidity:	75%
Maximum Humidity:	95%
Start Current:	0.004Ib
Meter Dimensions:	173mm X 118mm X 62.5 mm



## Functions

Active, Reactive, Tariff, Load profile, Event record,  
Event alarm, Neutral line metering, Firmware  
upgrade, IP protection IP54

Communication RS485\Bluetooth    Protocol DLMS

# KA19 Multifunctional energy meter

## AC 3P4W

This is an anti-tamper meter with with various of tamper and alarm functions. This meter is favored by customers with the features of high accuracy, various anti-tampering functions and competitive cost performance. In addition, this meter is designed strictly according to IEC62052 and IEC62053 standard.

Application

Household, Industry



### Technical Parameters

Standard:	IEC62052-11\ IEC62053-21
Rated Voltage:	3×230/400V
Rated Current:	0,25-5(100)A 1.5(6)A
Impulse Constant:	800 imp/kWh 12000 imp/kWh
Frequency:	50Hz/60Hz
Accuracy Class:	Active : 1.0    Reactive : 2.0
LCD Display:	LCD 6+2
Working Temperature:	-25 ~ 70°C
Power Consumption:	<10VA <1W
Average Humidity:	75%
Maximum Humidity:	95%
Start Current:	0.004Ib
Meter Dimensions:	227mm X 171mm X 62.5 mm



### Functions

Active, Reactive, Tariff, Load profile, Event record,  
Event alarm, Neutral line sampling, Firmware  
upgrade, IP protection IP54

Communication RS485\Bluetooth    Protocol DLMS

# K031 Smart meter

# AC 1P2W

This is a single-phase two wire smart meter, with a modular communication design that supports on-site replacement, which is an important part of the AMI solution. Remote communication, real-time monitoring, data analysis, etc. provide data support for improving the quality of the power grid.

## Application

## Household, Industry



### Technical Parameters

Standard:	IEC62052-11\ IEC62053-21
Rated Voltage:	230V
Rated Current:	0,25-5(45)A 0,25-5(100)A
Impulse Constant:	1600 imp/kWh
Frequency:	50Hz/60Hz
Accuracy Class:	Active : 1.0 Reactive : 2.0
LCD Display:	LCD 6+2
Working Temperature:	-25 ~ 70°C
Power Consumption:	<10VA <1W
Average Humidity:	75%
Maximum Humidity:	95%
Start Current:	0.004Ib
Meter Dimensions:	221mm X 127mm X 71mm



### Functions

Tariff, Active, Reactive, Demand, Neutral line measurement, Load profile, Event record, Event alarm, Load control, Firmware upgrade, Self-diagnosis, IP protection IP54  
Communication RS485, G3 PLC\GPRS  
Protocol DLMS

# KA11 Smart meter

# AC3P4W

This is a three-phase four wire smart meter, with a modular communication design that supports on-site replacement, which is an important part of the AMI solution. Remote communication, real-time monitoring, data analysis, etc. provide data support for improving the quality of the power grid.

## Application

## Household, Industry



### Technical Parameters

Standard:	IEC62052-11\ IEC62053-21
Rated Voltage:	3×230/400V
Rated Current:	0,25-5(45)A 0,25-5(100)A 0,25-5(6)A
Impulse Constant:	1000 imp/kWh 10000 imp/kWh
Frequency:	50Hz/60Hz
Accuracy Class:	Active : 1.0 Reactive : 2.0
LCD Display:	LCD 6+2
Working Temperature:	-25 ~ 70°C
Power Consumption:	<10VA <1W
Average Humidity:	75%
Maximum Humidity:	95%
Start Current:	0.004Ib
Meter Dimensions:	301mm X 184mm X 78mm



### Functions

Tariff, Active, Reactive, Demand, Neutral line sampling, Load profile, Event record, Event alarm, Load control, Firmware upgrade, Self-diagnosis, IP protection IP54  
Communication RS485, G3 PLC\GPRS  
Protocol DLMS

# K042 Energy meter

AC 1P2W

This is a single-phase two wire anti-tamper meter. This meter is favored by customers with the features of high accuracy and competitive cost performance.

Application

Household, Industry



## Technical Parameters

Standard:	IEC62052-11\ IEC62053-21
Rated Voltage:	230V
Rated Current:	0,25-5(100)A
Impulse Constant:	1600 imp/kWh
Frequency:	50Hz/60Hz
Accuracy Class:	Active : 1.0
LCD Display:	LCD 6+2
Working Temperature:	-20 ~ 70°C
Power Consumption:	<10VA <1W
Average Humidity:	75%
Maximum Humidity:	95%
Start Current:	0.004Ib
Meter Dimensions:	113mm X 101mm X 32mm



## Functions

Neutral line measurement



# KS01 Energy meter

# AC 2P3W

This is a Two phase three wire meter with RF wireless communication reading through PC software. It can ensure the long-term, reliable and stable operation of the electricity meter.

Application

Household, Industry



## Technical Parameters

Standard:	IEC62052-11\ IEC62053-21
Rated Voltage:	2×120/240V
Rated Current:	0,5-10(100)A
Impulse Constant:	1000 imp/kWh
Frequency:	50Hz/60Hz
Accuracy Class:	active 1.0 reactive 2.0
LCD Display:	LCD 6+2
Working Temperature:	-20 ~ 70°C
Power Consumption:	<10VA <1W
Average Humidity:	75%
Maximum Humidity:	95%
Start Current:	0.004Ib
Meter Dimensions:	125mm X 132mm X 48 mm



## Functions

Active, Reactive, Demand, Tariff, Load profile,

Event record, Event alarm, IP protection IP54

RF communication

Protocol IEC62056-21 C

# K010 Prepaid meter IC Card

## AC 1P2W

(MID)

This is a single-phase two wire STS prepaid energy meter with IR communication, which can be used for parameter setting and data reading.

Application

Household, Industry



### Technical Parameters

Standard:	IEC62052-11\ IEC62053-21
Rated Voltage:	230V
Rated Current:	0,25-5(80)A
Impulse Constant:	1000 imp/kWh
Frequency:	50Hz/60Hz
Accuracy Class:	Active : 1.0
LCD Display:	LCD 6+2
Working Temperature:	-20 ~ 70°C
Power Consumption:	<10VA <1W
Average Humidity:	75%
Maximum Humidity:	95%
Start Current:	0.004Ib
Meter Dimensions:	172mm X 125mm X 55 mm



### Functions

Energy Measurement

IC card prepayment

Communication RS485

Protocol Modbus

# Smart socket meter (CCC)

AC 1P2W

This is a cost-effective intelligent socket product. Supports Bluetooth direct connection and 4G communication, enabling remote control and data collection;  
Designed according to the standard 86 type cassette, it has the characteristics of minimal volume, light weight, beautiful appearance, and easy installation.

## Application

Household, Industry  
Shared electricity



## Technical Parameters

Standard:	IEC62052-11\ IEC62053-21
Rated Voltage:	230V
Rated Current:	1(10)A
Impulse Constant:	12000 imp/kWh
Frequency:	50Hz/60Hz
Accuracy Class:	B
LCD Display:	LCD 5+2
Working Temperature:	-10 ~ 60°C
Power Consumption:	<10VA <1W
Average Humidity:	75%
Maximum Humidity:	95%
Start Current:	0.004lb
Meter Dimensions:	86mm X 86mm X 55 mm



## Functions

Active, Reactive, Event record, Event alarm, Load control, Firmware upgrade, Temperature detection  
Communication 4G\Bluetooth Protocol 376.1