



| INDEX | | |
|--------------|-----------------------------------|-----------------|
| S.NO. | TABLE OF CONTENTS | PAGE NO. |
| 1 | INTRODUCTION - COMPANY | 2 |
| 2 | COMPANY PROFILE | 3 |
| 3 | COMPANY INFRASTRUCTURE | 4 |
| 4 | COMPANY HIERARCHY STRUCTURE | 5 |
| 5 | VENDOR REGISTRATION DETAILS | 6 – 7 |
| 6 | LIST OF PLANT & MACHINERY | 8 – 9 |
| 7 | LIST OF MEASURING INSTRUMENTS | 10 |
| 8 | LIST OF PRESTIGIOUS CLIENTS | 11 |
| 9 | LIST OF CERTIFICATES | 12 |
| 10 | ISO CERTIFICATE | 13 |
| 11 | IMAGE GALLERY OF OUR ORGANIZATION | 14 - 22 |



REF. NO.: NKTPL/SALES/OEM/2023-24

Sub: Request for Vendor Registration cum Introduction

We take immense pleasure to introducing **N.K. Temples Pvt. Ltd.** as one of the leading manufacturers & exporters of all type of spare parts & import substitute parts for Power, Cement Industries, Textile (Weaving, Spinning), Smart Gas Metering, Automobile Industries, Pneumatic, Orthopedic, Fly Ash Handling System, Heavy Earth Moving Machinery & various types of Industries. We are manufacturing Sheet Metal Parts, CNC/VMC Turned Mechanical Precise Components like Arbor Shaft, Flange, Bushes, Rods, Roller & Rubber & Plastic Injection Molded Components & many other precise products.

This is a recently established organization by dynamic & qualified management & engineers having experience in Design, Manufacturing, Quality Control & Research & Development.

N.K. Temples Pvt. Ltd. is a professionally managed family business group, established by founder **Shri NK Agarwal" Kishore Bharti"** in 1970, awarded by The President of India.

We assure you that we emphasize on Customer's satisfaction & a total solution approach to our customer's problems & needs. We maintain good stock with a view to feed the urgent requirement of our benefited customers. We always use provide quality products as per client's requirements.

Needless to say, that you will get our quality, specification, delivery according to your requirement. We look forward to a long, healthy and mutual business relationship.

We request you to kindly register/enlist us as your approved Vendor & in case there is any registration form, this may please be furnished to us for Necessary action at our end.

Thanking you & waiting for your early and favorable response.

Thanks & Regards,

For: N.K. Temples Pvt. Ltd.

Authorized Signatory

COMPANY PROFILE

N.K. Temples Pvt. Ltd. is one of the leading manufacturers and exporters of all types of Mechanical Rubber, Plastic molded components in India as well as abroad. The Company established with a vision to provide International Quality Standards product to the industries.

N.K. Temples Pvt. Ltd is an ISO 9001:2015 certified company that comes into existence after the grand success of 53 years experienced parental organizations **Sanjay Plastics & Industrial Services & Suntech Engineers India**. After creating a huge clientele base in India & abroad, now N.K. Temples Pvt. Ltd. starting up business for precise components.

In the new scenario of globalization, industries are touching new heights of developments & growth; today industries need latest technology machineries for international quality products & higher production rate to achieve international markets demands.

We use the best materials, excellent equipment and most sophisticated production methods, allowing us to make superior products. Good recommendations, on-time deliveries and progressive developments are the base for good quality joint ventures.

We present ourselves as a part of industries and determined to serve **Genuine Quality at Genuine Cost** spares parts to reduce production cost, operational cost & maintenance cost to our Honorable Clients.

We anticipate your cooperation to make a together development for global industries.

Our construction system allows us to serve you with quick and systematic solutions as per your requirement.

Company has setup robust infrastructure, state of the art manufacturing facilities and research & developments under one roof to provide world class products to our Honorable Clients.

COMPANY INFRASTRUCTURE

N.K. Temples Pvt. Ltd is having a manufacturing system like wise which allows us to serve you quick & proper solutions for your products. Best quality raw material & systematic production process helps us to serve the best quality product to you.

The entire staff and management of the company are thoroughly Professional. They stick to deadlines and deliver quality services. The company has gained good clients in less time due to their effective working style and good service. Our aim is to provide our clients with high professional Standards and to ensure clients satisfaction at each task.

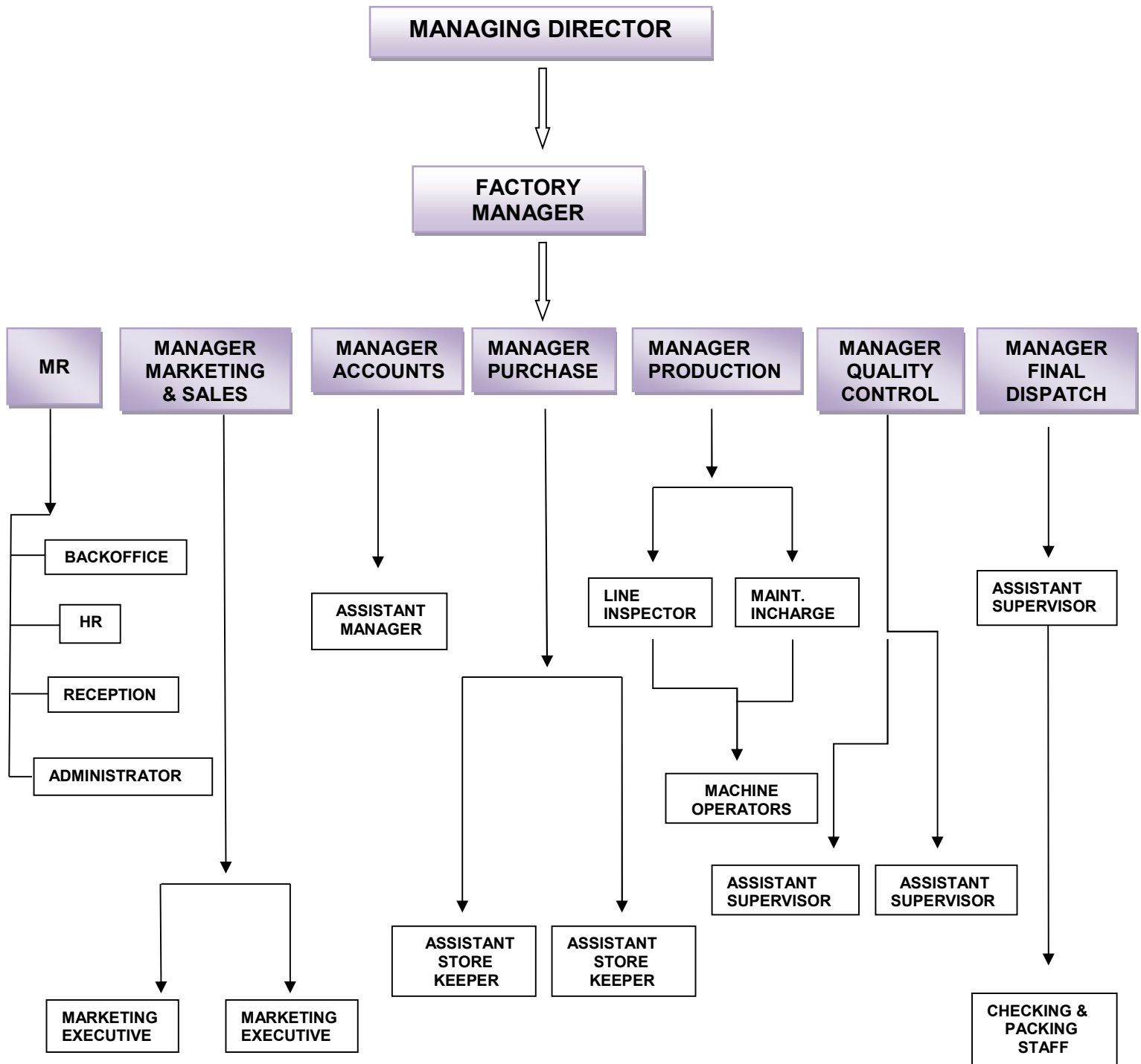
About technical Process N.K. Temples using Sliding Head 5 Axis Machine, CNC, VMC, Conventional Lathe, Milling Machines, Surface Grinder, Center Less Grinder Rubber Molding Machine, Injection Molding Machine, Nickel, Hard Chrome, Alkaline Zinc Plating Plant for making product more effective quality wise. All machines in N.K. Temples are highly smart & with the help of these machineries N.K. Temples developed more than 150 variants of weaving loom temples & about 300 variants of mechanical components and 500 types of rubber plastic molded products for various kinds of Textile, Cement, Power Energy Sector and engineering organization as per requirement.

Recently we have installed a new well-equipped laboratory for all testing purposes. This laboratory supports us to provide perfection and accuracy in new developments. In this laboratory we have a Rheometer, Muffle Furnace, Tensile Testing Machine, Compression Set, Profile Projector, Salt Spray Testing Machine, Coating Thickness Meter, RA Value Tester, Hardness Tester for Rubber, Plastics & Metals.

Currently N.K. Temples is a successful supplier of Weaving loom temples, fly ash handling system spare parts, Smart Gas Meters child products & many other precise products at domestic as well as International Market. Now a day's Company caters services to major leaders of clients like Shree Cement, Aditya Cement, Ambuja Cement, DCM, NTPC, Mynores India Pvt. Ltd., Secure Meters Limited, Raymond's, Vardhman, Siyaram, Alok, Wellspun, Dornier, Grasim, SRF, Nahar industries, etc.

Similarly, Company supplies products to International Textile Manufacturers in various markets like Peru, Turkey, Kenya, Europe, Bangladesh, Brazil, United Kingdom (U.K) etc.

COMPANY HIERARCHY STRUCTURE



VENDOR REGISTRATION DETAILS

| | | | |
|----|---|---|---|
| 1 | NAME OF FIRM/COMPANY | N.K. TEMPLES PVT. LTD. | |
| 2 | STATUS OF ORGANIZATION (PROPRIETORSHIP/PVT. LTD.) | PRIVATE LIMITED | |
| 3 | DATE OF REGISTRATION | 30-12-2011 | |
| 4 | NAME OF DIRECTORS | MR. GYANESH AGARWAL MS. BHARTI AGARWAL MR. ADITYA AGARWAL MR. VIKRAM AGARWAL | |
| 5 | ADDRESS OF WORKS | E-21, CHAMBAL INDUSTRIAL ESTATE, KOTA - 324003 (RAJ). INDIA | |
| 6 | ADDRESS OF H.O./CORPORATE OFFICE | E-21, CHAMBAL INDUSTRIAL ESTATE, KOTA - 324003 (RAJ). INDIA | |
| 7 | CONTACT DETAILS | CONTACT PERSON | MR. GYANESH AGARWAL |
| | | DESIGNATION | MANAGING DIRECTOR |
| | | MOBILE NO. | +91-7665010311, +91-9352133842 |
| | | EMAIL ID | gka@nktemples.com , info@nktemples.com |
| 8 | NATURE OF BUSINESS | MANUFACTURING | |
| 9 | IS THE FIRM REGISTERED WITH MSME ACT (MICRO, SMALL AND MEDIUM ENTERPRISE DEVELOPMENT ACT, 2006) | · SMALL MEDIUM ENTERPRISE (MSME) | |
| 10 | LIST OF PRODUCTS MANUFACTURING BY ORGANIZATION | · MECHANICAL PRECISE COMPONENT | |
| | | · TEMPLE CYLINDER & ACCESSORIES (FOR TEXTILE INDUSTRIES) | |
| | | · SPINDLE & THEIR SPARES ETC. | |
| | | · SMART GAS METER COMPONENTS. | |

**ACCOUNTS RELATED DETAILS:**

| | | |
|----|-------------------------------|-------------------|
| 1 | ECC NO (EXCISE NUMBER): | AADCN8531FEM001 |
| | CHAPTER ID NO: | CETSH-84484290 |
| | RANGE: | KOTA RANGE II |
| 2 | SERVICE TAX NO: | AADCN8531FSD001 |
| 3 | TIN NO / CST NO: | 8432959689 |
| 4 | DIC NO: (PART II) | 80301200072 |
| 5 | PAN NO: | AADCN8531F |
| 6 | GSTIN: | 08AADCN8531F1ZG |
| 7 | EPF NO: | 18527 |
| 8 | ESI NO: | 15000449740000199 |
| 9 | IE CODE (IMPORT EXPORT) CODE: | 1312003880 |
| 10 | ROC-CODE: | ROC-JAIPUR |

BANK DETAILS:

| | | |
|---|------------------|--------------------------------|
| 1 | BENEFICIARY NAME | N.K. TEMPLES PVT. LTD. |
| 2 | BANK NAME | CENTRAL BANK OF INDIA |
| 3 | BANK ADDRESS: | VIGYAN NAGAR KOTA (RAJ). INDIA |
| 4 | ACCOUNT NO: | 3664215148 |
| 5 | IFSC CODE | CBIN0281915 |

**LIST OF PLANT & MACHINERY**

| S.NO. | NAME OF MACHINE | QTY/NOS. |
|-------|---|----------|
| 1 | T-SUGAMI MAKE CNC SLIDING HEAD MACHINE, MODEL NO: B0205III (SWISS TYPE AUTOMATIC CNC WITH BARFEEDER & ACCESSORIES) | 8 |
| 2 | TSUGAMI MAKE CNC PRECISION AUTOMATIC TURNING CENTRE WITH CHIP CONVEYOR MODEL NO. M08J | 10 |
| 3 | BATLIBOI MAKE CNC TURNING CENTRE 200 X 300 | 14 |
| 4 | BATLIBOI MAKE VERTICAL MACHINING CENTRE MODEL CHETAK-55 MC+ | 1 |
| 5 | JYOTI MAKE CNC TURNING CENTRE MODEL NO. DX-200 | 2 |
| 6 | JYOTI MAKE VERTICAL MACHINING CENTRES MODEL NO. PX-20 | 1 |
| 7 | PINACHO MAKE CNC TURNING CENTRE POWER TURN 180*750 SPINDLE BORE 42 DIA WITH 8 STATION TURRETS (BTP 50) WITH FAGOR CONTROL | 2 |
| 8 | PINACHO MAKE CONVENTIONAL ALL GEARED LATHE MACHINE ROCIO 200*750 SPINDLE BORE 42 DIA | 10 |
| 9 | CONVENTIONAL LATHE MACHINE UP TO 2 MTR. LENGTH | 8 |
| 10 | VERTICAL MILLING (TURNING CENTRE) MACHINE MODAL RVM -1 WITH AUTO / MANUAL FEED HEADS | 3 |
| 11 | VERTICAL MILLING (TURNING CENTRE) MACHINE MODAL RVM -2 WITH AUTO / MANUAL FEED HEADS | 1 |
| 12 | HYDRAULIC AUTOMATIC SURFACE GRINDER BED SIZE 600 X 300 MM | 1 |
| 13 | MANUAL SURFACE GRINDER BED SIZE 500 X 250 MM | 1 |
| 14 | MICRO PRECISION DRILL MACHINES (0.1 MM TO 3.00MM) | 6 |
| 15 | DRILL MACHINE UP TO 30 MM DRILL SIZE | 3 |
| 16 | TAPPING MACHINE UP TO 15 MM AUTO TAP | 1 |
| 17 | SPM (SPECIAL PURPOSE MACHINE FOR DRILL, OD FACE, ETC.) | 12 |
| 18 | INDOTECH MAKE FULLY AUTOMATIC CIRCULAR HIGH PRODUCTION SAW MODEL NO. i-65 | 2 |
| 19 | BANDSAW MACHINE FOR METAL CUTTING UP TO 200 MM DIA | 3 |
| 20 | IMPACT MAKE POWER PRESS MACHINE FOR SHEET METAL 5 TON | 1 |
| 21 | IMPACT POWER PRESS HYDROLIC FRAME MACHINE 110 TON | 2 |



| | | |
|----|--|---|
| 22 | INJECTION PLASTIC MOULDING MACHINE WITH PLC 30- 500 GMS. | 4 |
| 23 | FEROMATIC MILACRON MAKE FULLY AUTOMATIC INJECTION MOLDING MACHINE 110T, 125T, 150T MODEL NO. NOVA 125 SERVO | 2 |
| 24 | BUFFING MACHINE WITH BELT DRIVEN | 7 |
| 25 | SEND BLASTING MACHINE WITH SAPRATE CHAMBER | 1 |
| 26 | RUBBER HYDROLIC POWER PRESS WITH PLC UP TO 1200 X1200 MM | 6 |
| 27 | BAKELITE / TEFLON(PTFE) MOLDING MACHINE UP TO 600 X 600 MM | 1 |
| 28 | CYLINDERICAL HYDROLIC GRINDER UP TO 1000 MM LENGHT | 1 |
| 29 | HYDROLIC RIVITING/PUNCHING MACHINE | 1 |
| 30 | HYDROLIC & PNEUMATIC ASSEMBLING SYSTEM FOR ALL PARTS | 1 |
| 31 | VIBRATION TEST METER WITH TEST BENCH UP TO 7000 RPM | 1 |
| 32 | DYNAMIC BALANCING MACHINE WITH WINDOW BASE UP TO 50 KG CAPACITY LENGTH 1000 MM DIA 300 MM | 1 |
| 33 | ALL MEASURING EQUIPMENT LIKE VERNIER CALIPERS, HIGHT GAUGE, MICRO METERS, DIAL GEAGUES, COATING THICKNESS METER, RA VALUE TESTER, HARDNESS TESTER FOR RUBBER, PLASTICS & METAL, RPM METER, TEMPRETURE METER AND ALL OTHER EQUIPMENT, PROFILE PROJECTOR, SALT SPRAY TESTING MACHINE, ROUGHNESS AVERAGE TESTER, TENSILE TESTING MACHINE, REHOMETER, COMPRESSION SET, SPECIFIC GRAVITY METER, VIBRATION METER ETC. | 1 |
| 34 | FULLY AUTOMATIC ZINC PLATING PLANT WITH ETP & STP ETC. (CAPACITY UPTO 10 LACS PIECES PER MONTH.) | 1 |
| 35 | ZINC PLATING PLANT WITH COLOR PASSIVASION | 1 |
| 36 | ELECTRO LESS PLATING (NICKEL & CROME) PLANT | 1 |
| 37 | HARD CROME PLATING PLANT UP TO 1000 MM LENGTH WITH ETP WATER FILTERAITON SYSTEM | 1 |
| 38 | FULLY AUTOMATIC ELECTROPOLISHING PLATING PLANT | 1 |
| 39 | GOLD PLATING PLANT | 1 |
| 40 | PRESS SHOP | 1 |
| 41 | POWDER COATING PLANT | 1 |
| 42 | CED PLANT | 1 |



LIST OF MEASURING INSTRUMENTS

| SR. NO. | DESCRIPTION OF ITEM | RANGE | LEAST COUNT | MAKE | QTY. |
|----------------|--------------------------------------|-----------------|--------------------|-------------|-------------|
| 1 | CMM CRYSTA M443 | 400x400x300mm | 0.0005mm | MITUTOYO | 1 NOS. |
| 2 | PROFILE PROJECTOR | 100x100 mm | 0.001mm | MITUTOYO | 1 NOS. |
| 3 | PROFILE PROJECTOR | 100X50 mm | 0.001mm | MITUTOYO | 1 NOS. |
| 4 | ROUGHNESS TESTER WITH MASTER SAMPLE | 25 mm | 0.001μ | MITUTOYO | 1 NOS. |
| 5 | ROUGHNESS TESTER | 12.50mm | 0.001μ | MITUTOYO | 1 NOS. |
| 6 | DIGITAL HEIGHT GAUGE | 0-600mm | 0.01mm | MITUTOYO | 2 NOS. |
| 7 | SURFACE PLATE | 630X630mm | - | AYUMIC | 1 NOS. |
| 8 | SURFACE PLATE | 400X400mm | - | AYUMIC | 1 NOS. |
| 9 | SURFACE PLATE | 400X400mm | - | LUTHRA | 1 NOS. |
| 10 | DIGIMATIC HOLE TESTER | 10-12mm | 0.001mm | MITUTOYO | 1 NOS. |
| 11 | VICKER HARDNESS TESTER | 5kgf-50kgf | - | FIE | 1 NOS. |
| 12 | HOT AIR OVEN | 50 TO 400°C | 1°C | VELIYATH | 4 NOS. |
| 13 | TORQUE WRENCH | 0.2 - 12 Nm | 0.2 Nm | TOHNICHI | 2 NOS. |
| 14 | DIGITAL MICROMETER | 0 - 25mm | 0.001mm | MITUTOYO | 5 NOS. |
| 15 | ANALOG MICROMETER | 75 - 100mm | 0.001mm | MITUTOYO | 1 NOS. |
| 16 | SLIP GAUGE SET | 0.5 - 100mm | - | TRUESIZE | 1 NOS. |
| 17 | DIGITAL TACHOMETER | UP TO 99999 RPM | - | LTI | 1 NOS. |
| 18 | SCALE VERNIER CALLIPER | 0-600mm | 0.01mm | INSIZE | 1 NOS. |
| 19 | SCALE VERNIER CALLIPER | 0-1000mm | 0.01mm | INSIZE | 1 NOS. |
| 20 | DIGITAL VERNIER CALLIPER | 0 - 1000mm | 0.01mm | INSIZE | 1 NOS. |
| 21 | DIGITAL VERNIER CALLIPER | 0 - 300mm | 0.01mm | MITUTOYO | 1 NOS. |
| 22 | DIGITAL VERNIER CALLIPER | 0 - 150mm | 0.01mm | MITUTOYO | 10 NOS. |
| 23 | DIGITAL VERNIER CALLIPER | 0 - 150mm | 0.01mm | INSIZE | 50 NOS. |
| 24 | DIAL VERNIER CALLIPER | 0-150mm | 0.01mm | DIGITAL | 25 NOS. |
| 25 | DIGITAL SOUND LEVEL METER | 30db-130db | 0.01db | SIGMA | 1 NOS. |
| 26 | DIAL BORE GAUGE | 10 - 18.50mm | 0.01mm | MITUTOYO | 1 NOS. |
| 27 | RADIUS GAUGE | 15.50 - 25mm | - | MITUTOYO | 1 SET |
| 28 | THREAD RING GAUGES (DIFFERENT SIZES) | - | - | - | 100 SET |
| 29 | THREAD PLUG GAUGES (DIFFERENT SIZES) | - | - | - | 75 SET |

PRESTIGIOUS CLIENT LIST

| S.NO. | CLIENT NAME | ADDRESS | SECTOR |
|-------|---|---|-----------------|
| 1 | SECURE METERS LTD. | E-CLASS, PRATAP NAGAR INDUSTRIAL AREA, UDAIPUR-313001, RAJASTHAN | SMART GAS METER |
| 2 | MYNORES INDIA PVT. LTD. | E-98,99 MEWAR INDUSTRIAL AREA, MADRI, UDAIPUR-313003, RAJASTHAN | SMART GAS METER |
| 3 | KABSONS GAS EQUIPMENT PVT. LTD. | PLOT NO. 40 & 41 CIEEP GANDHINAGAR, BALANAGAR, HYDERABAD-500037 | SMART GAS METER |
| 4 | GENUS POWER INFRASTRUCTURE LTD. | SP-3 RICCO IND. AREA, TONK ROAD, SITAPURA, JAIPUR-302022 | SMART GAS METER |
| 5 | SMART METERS TECHNOLOGIES PVT. LTD. (ADANI GROUP) | 2 ND FLOOR GUJARAT CHAMBERS OF COMMERCE BUILDING, ASHRAM ROAD AHMEDABAD, 380009 GUJARAT | SMART GAS METER |
| 6 | MAHANAGAR GAS LIMITED | 5 TH FLOOR, WEST WING, TOWER 3, EQUINOX BUSINESS PARK, OFF BANDRAKURLA COMPLEX, LBS MARG, KURLA (WEST), MUMBAI- 400070 | SMART GAS METER |
| 7 | RAYCHEM RPG PVT. LTD. | | SMART GAS METER |
| 8 | CAPITAL INNOTECH PVT. LTD. | | SMART GAS METER |
| 8 | ROTEX AUTOMATION LIMITED | 987/11, G.I.D.C., MAKARPURA, VADODARA- 390010, GUJARAT | PNEUMATIC PARTS |
| 9 | NELES INDIA PVT. LTD. | 560, MANPADA ROAD, NEAR BHOPAR, VILLAGE, DOMBIVALI (EAST)-421204 THANE, MAHARASHTRA | PNEUMATIC PARTS |
| 8 | JANATICS PNEUMATICS INDIA PVT. LTD. | S.F. NO.252/1B1, BODIPALAYAM, SEERAPALAYAM VILLAGE, MADUKKARI POST, COIMBATORE-641105 | PNEUMATIC PARTS |
| 9 | ASCO NUMATICS (INDIA) PVT. LTD. | NO.57, KUNDRATHUR MAIN ROAD, GERUGAMABKKAM, PORUR, CHENNAI-600128, TAMILNADU | PNEUMATIC PARTS |
| 11 | METSO INDIA PVT. LTD. | 560, MANPADA ROAD, DOMBIVALI (E), MAHARASHTRA | PNEUMATIC PARTS |
| 12 | DUNCAN ENGINEERING LIMITED | F-33, RANJANGAON MIDC, KAREGAON, TAL.SHIRUR, DIST. PUNE-412209 | PNEUMATIC PARTS |
| 13 | KENWOOD VALVE CONTROL INDIA PVT. LTD. | | PNEUMATIC PARTS |
| 14 | BUCHER HYDRAULICS PVT. LTD. | PLOT NO.6, SECTOR-5, IMT MANESAR, GURGAON-122050 | HYDRALUIC PARTS |
| 15 | OZONE OVERSEAS PVT. LTD. | KALA AMB-173030, HIMACHAL PRADESH | HARDWARE PARTS |
| 16 | INDIAN RAILWAY | RAIL COACH FACTORY COLONY, KAPURTHALA, HUSSAINPUR, RASULPURCHISTY, PUNJAB 144602 | GOVERMENTS |
| 17 | ORDNANCE FACTORIES BOARD | PHASE-I, MURADNAGAR, UTTAR PRADESH- 201206 | GOVERMENTS |

LIST OF CERTIFICATES

| S.NO. | CERTIFICATE TYPES | ISSUED DATE | ISSUED BY |
|-------|---|-------------|---|
| 1 | CERTIFICATE OF COMPANY INCORPORATION | 30/12/2011 | REGISTRAR OF COMPANIES (RAJ.) |
| 2 | DIC CERTIFICATE PART-II | 21/09/2012 | DISTRICT INDUSTRIES CENTRE KOTA (RAJ.) |
| 3 | LICENCE TO WORK A FACTORY (ACT 1948) | 21/05/2012 | CHIEF INSPECTOR OF FACTORIES OF RAJASTHAN GOVT. |
| 4 | IMPORT- EXPORT CODE (IEC CODE) | 28/05/2012 | FOREIGN TRADE DEVELOPMENT OFFICER INDIA GOVT. |
| 5 | EMPLOYEES STATE INSURANCE (ESI) | 24/05/2012 | ESI CORPORATION RAJ. GOVT. |
| 6 | EMPLOYEES PROVIDENT FUND (PF) | 23/05/2012 | PF DEPARTMENT INDIA GOVT. |
| 7 | SALES TAX REGISTRATION (TIN NO.) | 30/12/2011 | DEPARTMENT OF SALES TAX RAJ. GOVT. |
| 8 | CENTRAL EXCISE REGISTRATION | 02/07/2012 | CENTRAL BOARD OF EXCISE & CUSTOMS |
| 9 | SERVICE TAX REGISTRATION | 06/07/2012 | CENTRAL BOARD OF EXCISE & CUSTOMS |
| 10 | PAN CARD REGISTRATION | 30/12/2011 | INCOME TAX DEPARTMENT GOVT. OF INDIA |
| 11. | GST REGISTRATION | 26/06/2017 | GOVERNMENT OF INDIA |
| 12 | GOVERNMENT PURCHASE ENLISTMENT CERTIFICATE | 29/04/2015 | THE SMALL-SCALE IND. CORP. LTD. |
| 13 | QUALITY MANAGEMENT SYSTEM (ISO CERTIFICATE 9001:2015) | 08/12/2018 | DET NORSKE VERITAS (DNV) WITH UKAS |
| 14 | CERTIFICATE OF PREVENTION AND CONTROL OF POLLUTION | 14/08/2013 | RAJASTHAN STATE POLLUTION CONTROL BOARD |
| 15 | PERFORMANCE & CREDIT RATING | 21/09/2012 | NSIC-ONICRA |
| 16 | FACTORY INSURANCE | 25/06/2015 | FUTURE GENERALI INDIA INSURANCE CO.LTD. |
| 17 | MEMBER OF ITAMMA MUMBAI | 01/04/2016 | ITAMMA OFFICE MUMBAI |
| 18 | MEMBER SSI ASSOCIATION KOTA | 01/04/2013 | THE SSI ASSOCIATION |
| 19 | MEMBER LAGHU UDYOG COUNCIL OF KOTA | 13/04/2013 | LAGHU UDYOG COUNCIL OF KOTA |
| 20 | MEMBER OF CII | 04/08/2014 | CONFEDERATION OF INDIAN INDUSTRIES |
| 21 | THE RUBBER BOARD LICENCE TO ACQUIRE RUBBER | 22/05/2014 | RUBBER BOARD OF INDIA |



IMAGE GALLERY – ORGANIZATION



(RECEPTION)



(STORE)



TEMPLES PVT.LTD.®

Where Technology Leads Innovation



(PURCHASE DEPARTMENT)



(SALES & MARKETING OFFICE)



(QUALITY CONTROL DEPARTMENT/LABORATORY)



(QUALITY CONTROL DEPARTMENT/LABORATORY)



(SLIDIND HEAD DIVISION)



(SLIDING HEAD DIVISION)



(CNC DIVISION)



(CNC DIVISION)



(SPM & TOOL ROOM)



(RUBBER POLYMER & PLASTIC MOULDING)



(PLATING PLANT)



(INSPECTION, ASSEMBLY & DISPATCH DEPARTMENT)