



CASAGRANDE
ELETTROCOSTRUZIONI
SpA



CERTIFIED



ISO 9001



ISO 14001



OHSAS 18001



COMPANY PRESENTATION

“Casagrande Elettrocostruzioni is a company fully private and independent founded and operating in the electromechanical field since 1959”



*“Getting together is a beginning,
staying together is progress,
working together is success.”*

Henry Ford

LOCATION AND ACTIVITIES



Headquarter in Verona:
Surface 10.800 m²

- Commercial
- Engineering
- Production and assembling
- Site activity and coordination



Production Branch in Verona:
Surface 5.500 m²

- Production and assembling



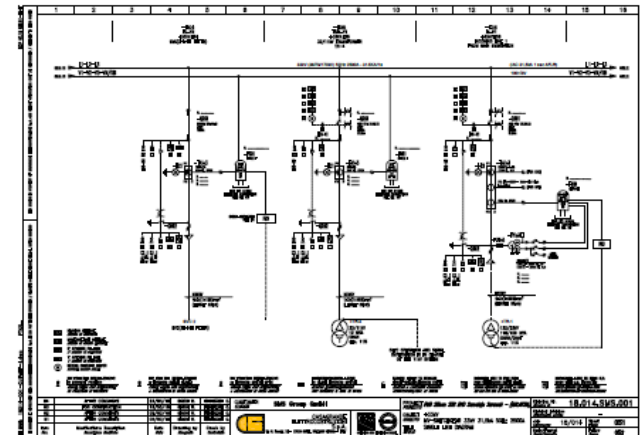
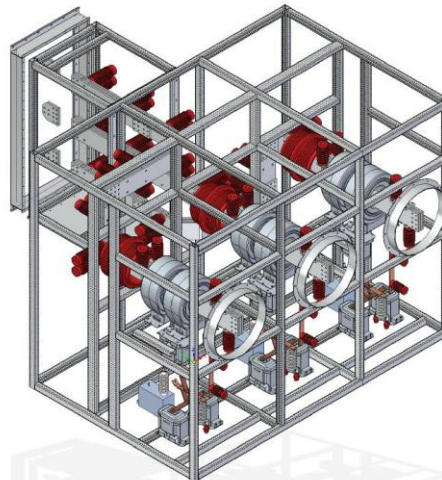
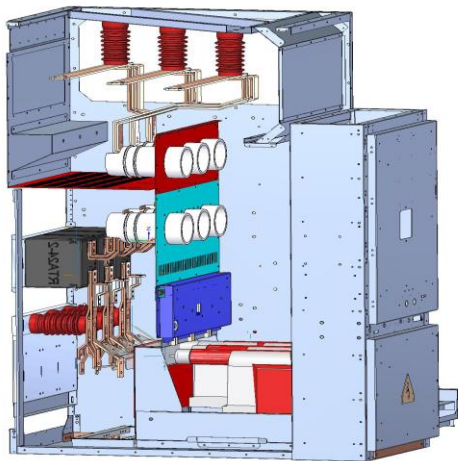
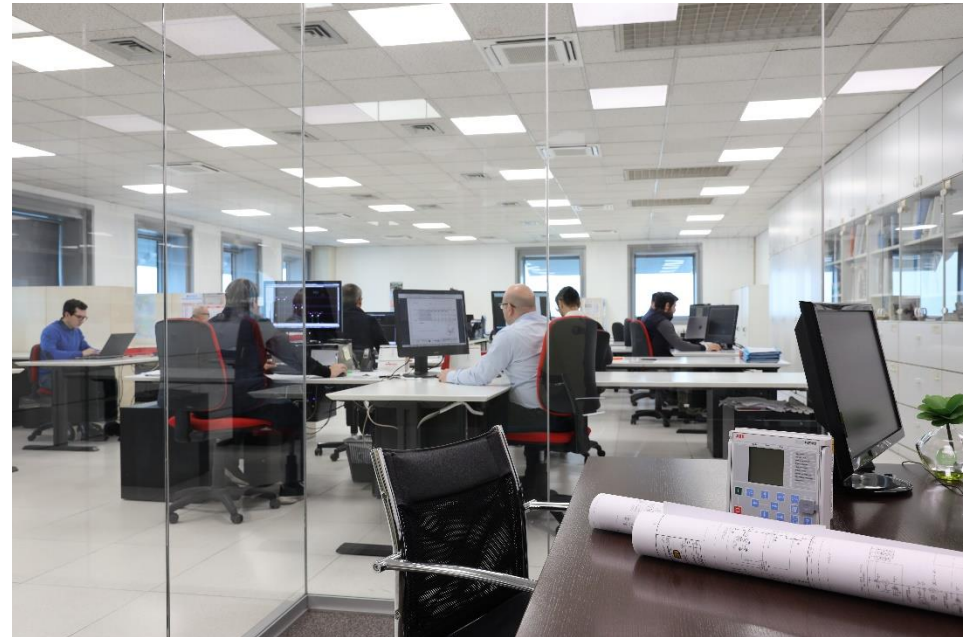
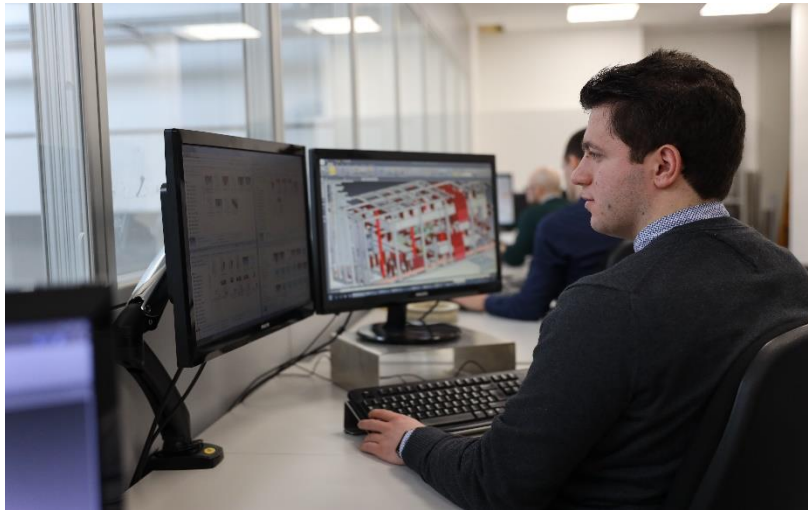
Production Branch in Campobasso:
Surface 1.600 m²

- Production
- Site activities for Centre and South Italy

LOCATION AND ACTIVITIES



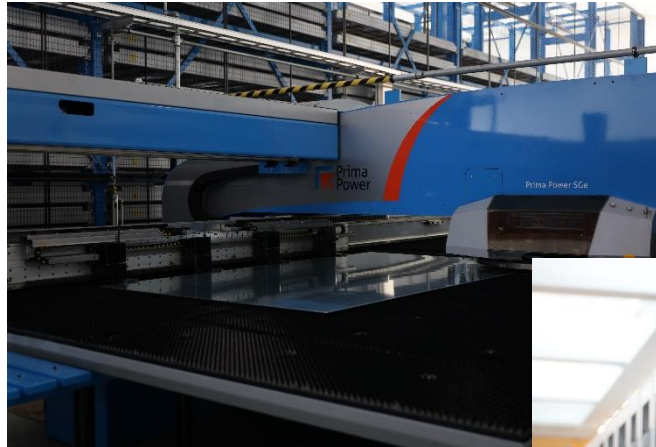
Engineering and development



LOCATION AND ACTIVITIES



Mechanical production



LOCATION AND ACTIVITIES



Electrical production



COMPANY FIGURES



Turnover:	2016 ~	K€ 30.000
	2017 ~	K€ 25.000
	2018 ~	K€ 25.000
	2019 ~	K€ 31.000
	2020 ~	K€ 35.000
	2021 ~	K€ 29.000
	2022 ~	K€ 37.000

Total Workforce: 120

Total Production Surface: 18.000 m²

CUSTOMER AND MARKETS



Main market sectors

Power Generation

Thermal
Cogenerating
Gas / Steam
Nuclear



Industry

Steel
Paper
Cement
Water



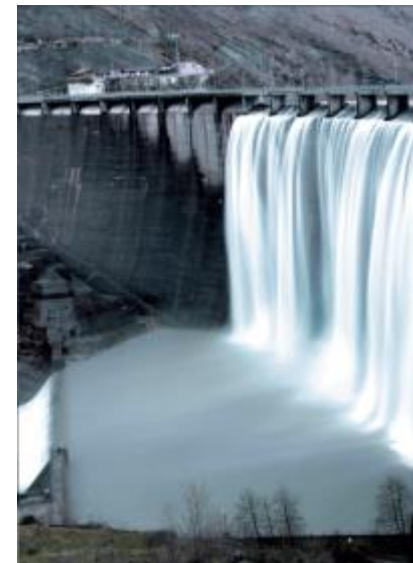
Chemicals - Oil & Gas

Drilling & Extraction
Refilling
Chemical industry



Renewable

Solar
Hydro
Biomass
Wind



CUSTOMER AND MARKETS



Customer Experiences

- Hystorical experience with Enel
- Private and public Italian clients for internal and export market
 - Private foreign clients for export market

Typical Customers

Turn Key Contractors

Engineering Companies

Energy Contractors

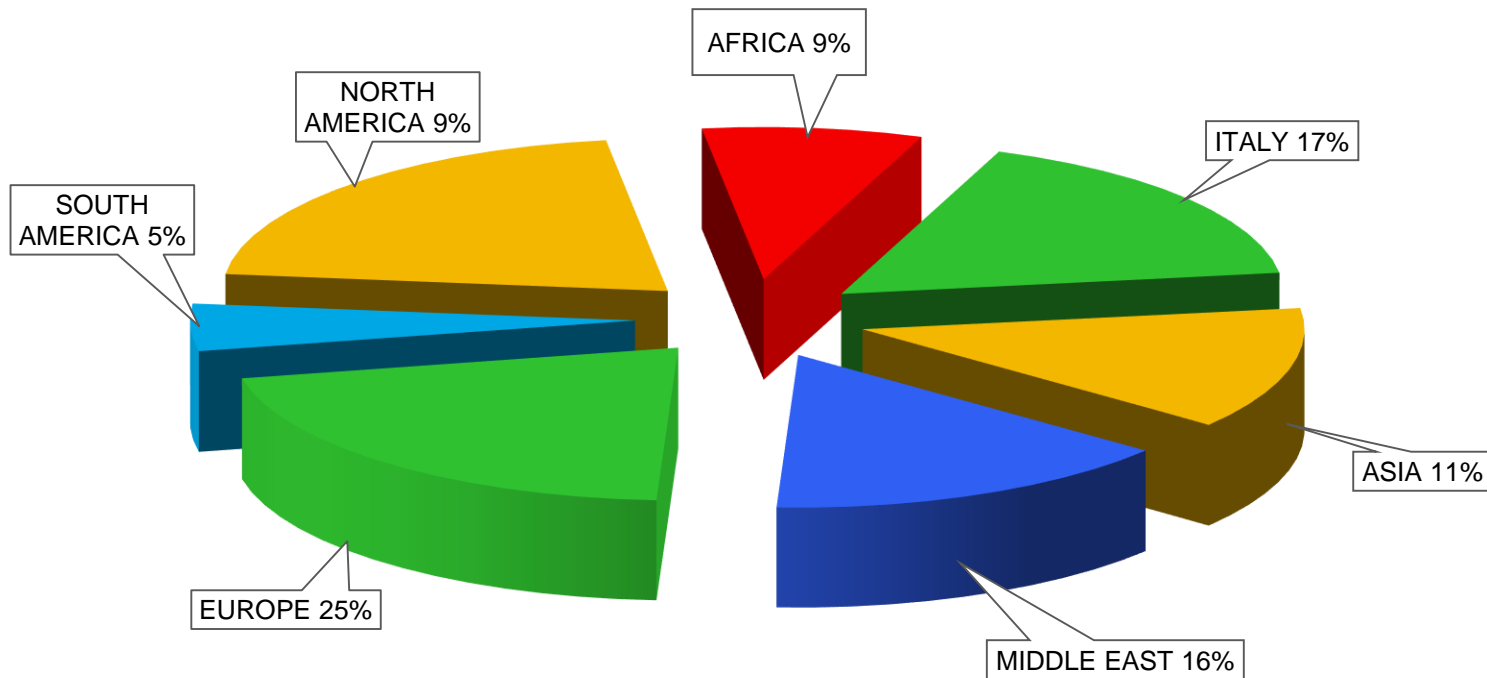
Manufacturer in Energy Field

Generator's Manufacturers

End Users



PROJECTS WORLD WIDE DISTRIBUTION



Percent value of year amount

PRODUCT AND SERVICES



Low Voltage

Power Center Switchboard

Motor Control Center

Distribution Panels

Protection and Control Panels

LV Bus Ducts

Medium Voltage

MV Metal Clad Switchgears
up to 40.5KV

MV Switchgears for Arc Furnace
up to 40,5kV

MV Neutral and Line
Cubicles for generators

MV Generators switchgears
with GCB breakers

MV Cubicles with VT's in
Withdrawable or fixed version

MV Bus ducts

Plants & Services

Engineering

Plants & Site activities

Short circuit calculation &
Selectivity study

Supervision, Commissioning &
Start up

Other Products

E-House Shelters & Containers for
electrical cabinets

Enclosures IP66 & Type NEMA 4X

Certification & Quality

CE-PC200 Power Center



General characteristics

CE-PC200 “Power Center” Switchboards are designed for use in all installation where electric energy is produced, transformed and distributed.

Available version complying to the new IEC 61439.

Electrical Data

Rated insulating voltage up to	V	1000
Rated frequency	Hz	50/60
Rated current on main bus bars up to	A	6300
Maximum short-term rated current 1 sec up to	kA	150
Maximum peak current up to	kA	375
IAC classified (Option)	kA	100 (0,5sec)



CE-MCC200 Motor Control Center



General characteristics

CE-MC200 is a modular system of withdrawable or fixed units for the supply, control and protection of low voltage motors.
Available version complying to the new IEC 61439

Electrical Data

Rated voltage up to	V	690
Rated frequency	Hz	50/60
Rated insulating voltage up to	V	1000
Rated current on main bus bars up to	A	2000
Maximum short-term rated current 1 sec up to	kA	100
Maximum peak current up to	kA	250
IAC classified (Option)	kA	100 (0,5sec)



CE-SA Auxiliary distribution panels



General characteristics

CE-SA are modular system of switchboards for distribution, command and protection of low voltage auxiliary devices. Available version complying to the new IEC 61439.

Electrical Data

Rated voltage up to	V	660
Rated frequency	Hz	50/60
Rated insulating voltage up to	V	1000
Rated current on main bus bars up to	A	630
Maximum short-term rated current 1 sec up to	kA	50
Maximum peak current up to	kA	105/154

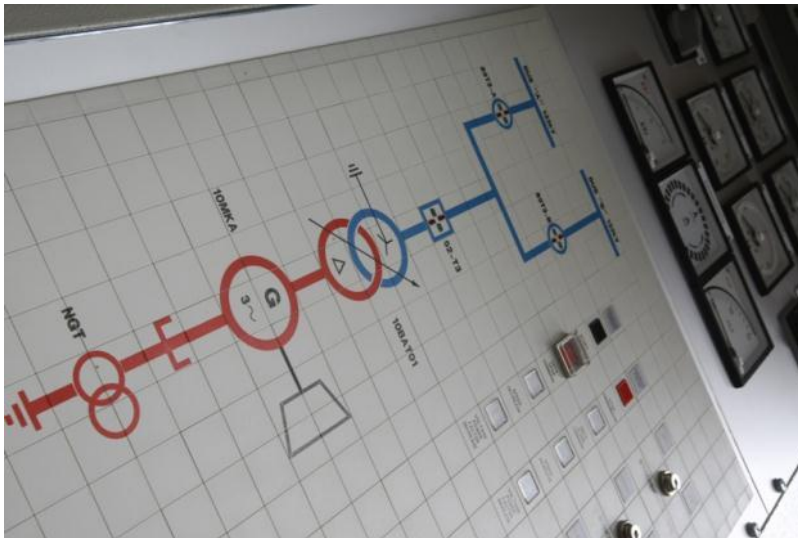


CE-PRO Protection & Control panels



General characteristics

CE-PRO are panels for command, Control, protection, Synchronizing and measurement of Generators, Transformer bay, HV substation.



CE-BDBT LV Bus Ducts

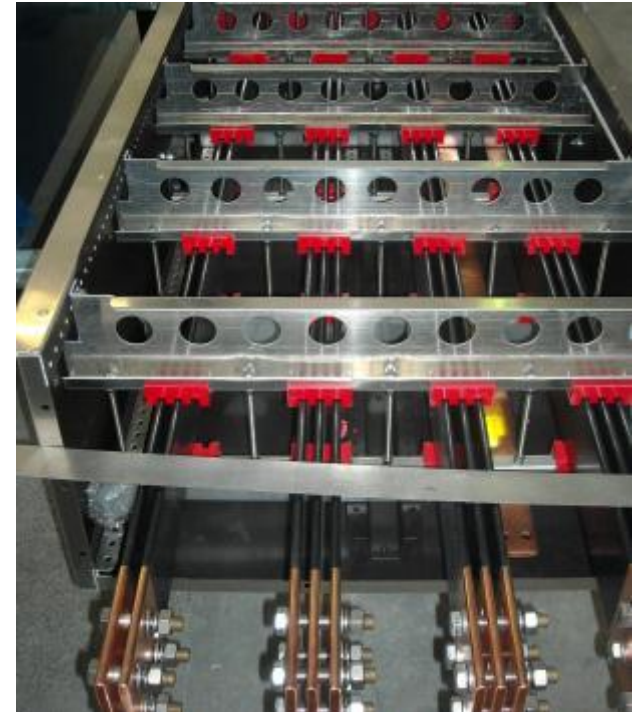


General characteristics

CE-BDBT is a system of air insulated bus duct with metallic enclosures and conductor in copper or aluminum; segregate phase on request.

Electrical Data

Rated voltage up to	V	660
Rated frequency	Hz	50/60
Rated insulating voltage up to	V	1000
Rated current on main bus bars up to	A	6300
Maximum short-term rated current 1 sec up to	kA	100
Maximum peak current up to	kA	230



CE-B MV Metal Clad Switchboards



General characteristics

CE-B are Metal Clad switchboards classified LSC2B designed for use in public and industrial distribution systems for the operation, protection of lines, generators, transformers, motors, capacitor banks.

Electrical Data

Rated voltage up to	kV	40.5
Test Voltage 1 min up to	KV	85
Impulse withstand voltage up to	KV	190
Rated frequency	Hz	50/60
Rated current up to	A	3150/5000
Maximum short-term rated current 1 sec up to	kA	50
Maximum peak current up to	kA	125
IAC Classification A-FLR (1 sec) Optional	kA	50



CE-BF MV Arc Furnace Switchboards



General characteristics

Withdrawable or fixed versions specially designed for command and protection of Furnace Transformer. They are designed for heavy duty cycles typical in EAF/LF/SAF plants.

Electrical Data

Rated voltage up to	kV	40.5
Test Voltage 1 min up to	KV	85
Impulse withstand voltage up to	KV	190
Rated frequency	Hz	50/60
Rated current up to	A	3150/5000
Maximum short-term rated current 1 sec up to	kA	50
Maximum peak current up to	kA	125



CE-LS MV Neutral & Line cubicles for generators

General characteristics

CE-LS series is designed for use in power and production plants mainly for generator neutral earthing, generator metering and outgoing line protection.

Electrical Data

Rated voltage up to	kV	24
Test Voltage 1 min up to	KV	50
Impulse withstand voltage up to	KV	125
Rated frequency	Hz	50
Rated current up to	A	14.000
Maximum short-term rated current 1 sec up to	kA	100
Maximum peak current up to	kA	250
IAC Classification A-FLR (1 sec) Optional	kA	50



CE-GCBS Generator Circuit Breaker Switchgears

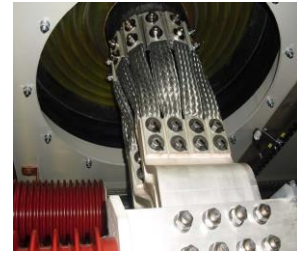


General characteristics

CE-GCBS switchgears are designed for generator command, control and protection, including metering VT/CT. Line switch and Earth switch installed on request as far as SFC / UAT derivation feeder.

Electrical Data

Rated voltage up to	kV	17,5
Test Voltage 1 min up to	KV	38
Impulse withstand voltage up to	KV	95
Rated frequency	Hz	50/60
Rated current up to	A	8000
Maximum short-term rated current 1 sec up to	kA	80
Maximum peak current up to	kA	200



CE-TR E/F MV Cubicle for voltage transformers



General characteristics

CE-TR E/F cubicles are designed for VTs disconnection by a truck with or without fuses. The cubicles can be utilised for one or three phases version. The “CE-TR” cubicles are also designed as a component of each MV switchboard and MV cubicles

Electrical Data

Rated voltage up to	kV	36
Test Voltage 1 min up to	KV	70
Impulse withstand voltage up to	KV	170
Rated frequency	Hz	50/60
Maximum short-term rated current 1 sec up to	kA	100
Maximum peak current up to	kA	250



CE-BDMT MV Bus Ducts

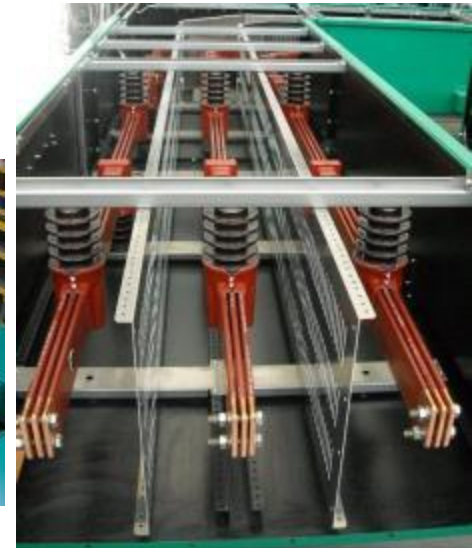


General characteristics

CE-BDMT is a system of air insulated bus duct with metallic enclosures and conductor in copper or aluminum, with optional segregate phase on request.

Electrical Data

Rated voltage up to	kV	36
Test Voltage 1 min up to	KV	70
Impulse withstand voltage up to	KV	170
Rated frequency	Hz	50/60
Rated current up to	A	8000
Maximum short-term rated current 1 sec up to	kA	80
Maximum peak current up to	kA	200

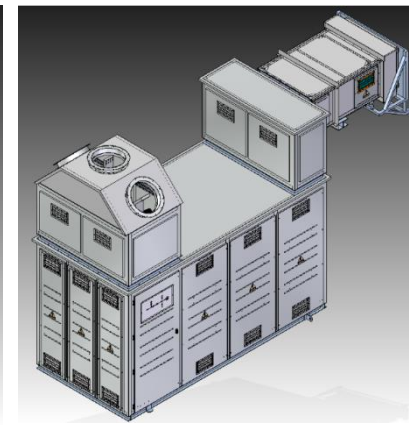
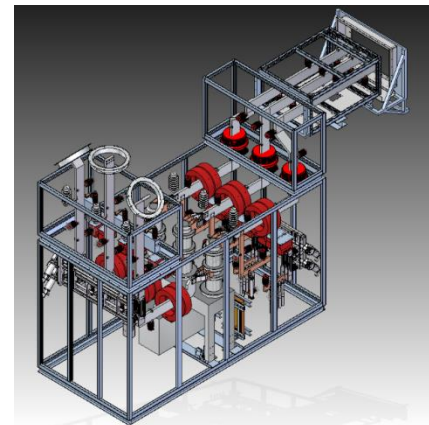
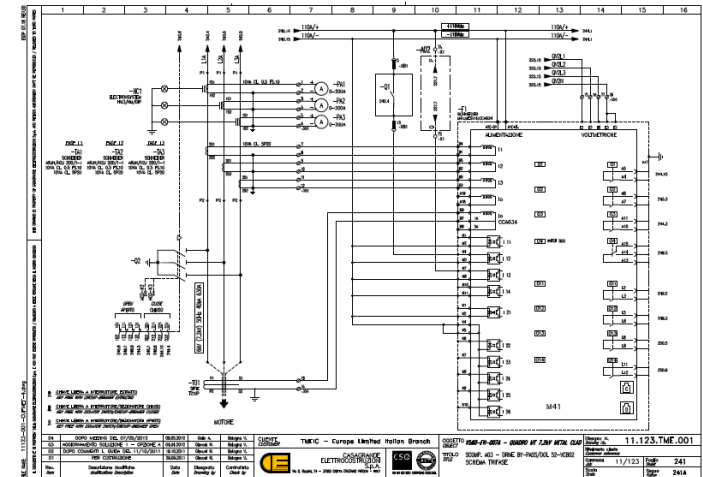


Engineering

Consolidated experience in the sectors of distribution plants, switchboards, HV, MV and LV electrical energy transformation and generation.

Main activities:

- Detailed electrical drawings
- Lay out and plan drawings
- Mechanical 3D modelling for design of switchboards and cubicles
- Selection of components and sizing of electrical equipment's
- Study of protection systems for generators and distribution networks
- Interconnection lists and cables sizing
- Mechanical and structural sizing and verification
- Detailed drawings for electromechanical installation
- Instructions manuals for installation commissioning and maintenance of switchboards and plants



Plants & Site activities



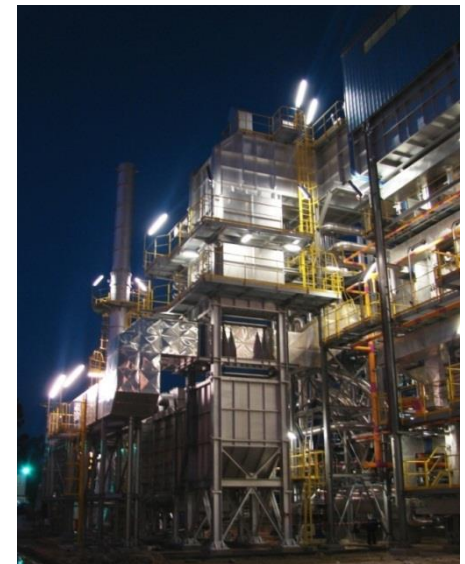
Typical plants:

- Power stations and generation plants
- Industrial distribution systems
- HV Primary system substations up to 380KV
- 132/60/30KV HV / MV substations
- MV / LV electrical cabinets



Activities:

- Installation of LV and MV Cubicles and Switchboards
- Installation of HV equipments and relative metallic supports
- Connection and laying of control cables and cable ways

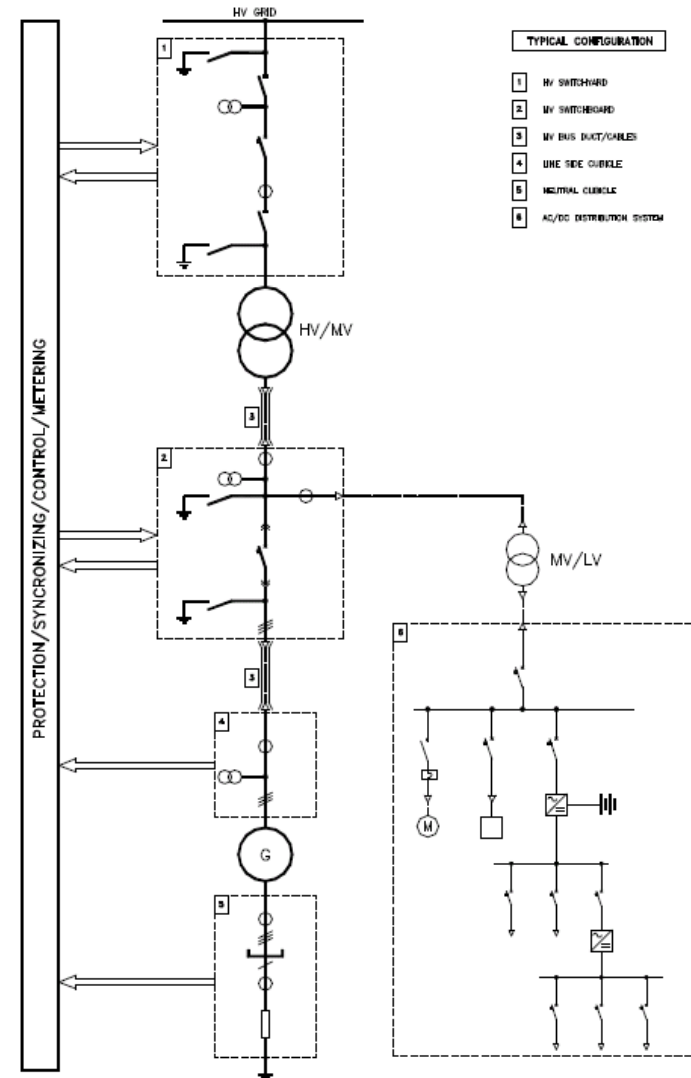


Plants & Site activities



Turn key generation plant:

- Power stations
- HV Primary system substations up to 380KV
- 132/60/30KV HV / MV substations
- MV / LV electrical cabinets

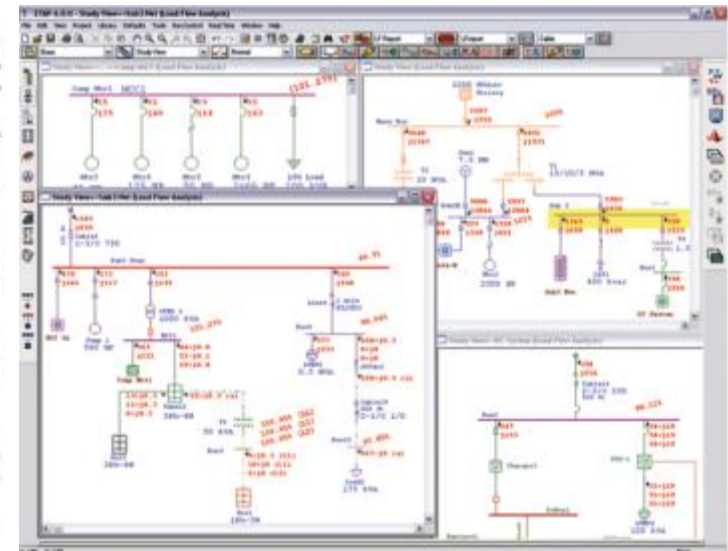
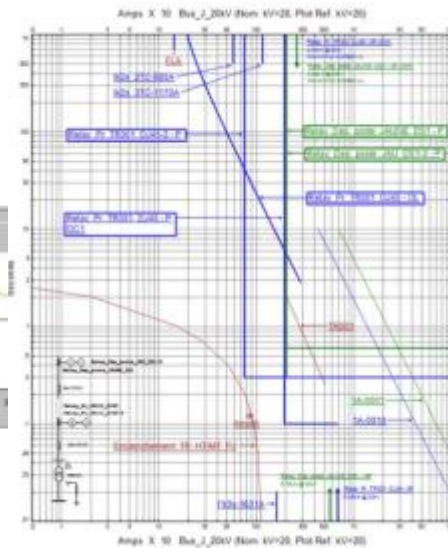
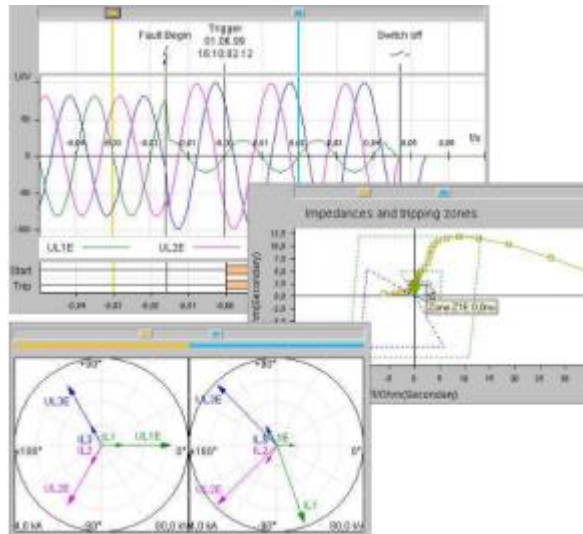
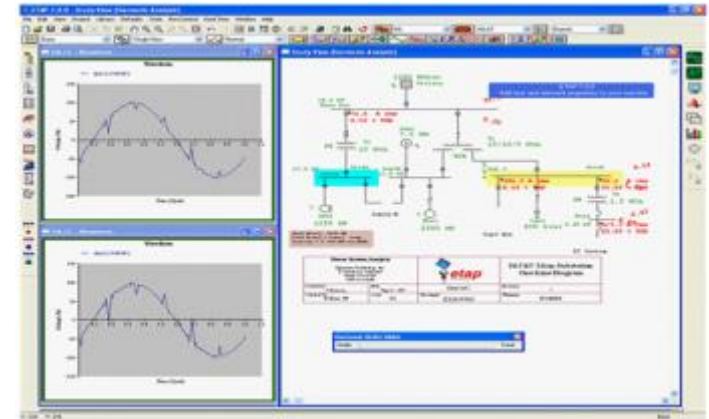


Short circuit calculation & selectivity study



Activities for electrical protection systems

- Study of protection systems
- Load flow calculation
- Short circuit calculation
- Selectivity study for protection systems
- Setting tables



Site Activities



Main Activities:

- Supervision for erection and installation
- Commissioning
- Start up
- Protection systems start up
- Protection site tests with injection of voltage and current



CE-S Electrical Shelters and container



General characteristics

CE-S Shelters main use are:

- Electrical room factory integrated
- Transformers and / or Capacitor bank box
- Instrumentation room E/F

Are customised and sized with dimensions able to incorporate the equipments required by the client. It can be divided in more pieces in order to allow standard transport dimensions.

Typical equipments which can be integrated inside shelters:

- MV switchboards (Standard or Internal arc version)
- LV switchboards (Power Center, MCC, Protection panels)
- MV/LV transformer dry type
- MV/LV capacitor bank
- UPS and / or Battery Charger



CE-Enclosures IP66 & Type NEMA 4X



Enclosures for specific applications

CE develop metallic enclosure, both welded and rivet assembled, type tested for outdoor application with protection Degree up to IP66 as for IEC 60529 std. Production is certified by ETL laboratory (U.S.) to manufacture and label enclosure with Protection Degree up to Type NEMA 4X as for UL50 and CSA C22.2 std.

Enclosure can be use for many purpose (Transformer box, Generator cubicle, Metering panel), painted or unpainted, steel, Aluminium or stainless steel AISI 304/316 can be used as primer material.



Report No. 2004953UDI-001
Casagrande Elettrocostruzioni S.p.A.

Page 11 of 15

Issued: 22-Sep-2009
Revised: None

8.0 Test Summary				
Evaluation Period	June 22, 2009 - September 22, 2009		Project No.	4853
Sample Rec. Date	22/06/2009	Condition	Prototype	
Sample ID				
Test Location	Intertek Italia Srl, Via Principe di Udine, 114 - Campoformido (UD) - ITALY			
Test Procedure	Testing Lab			
Determination of the result includes consideration of measurement uncertainty from the test equipment and methods. The product was tested as indicated below with results in conformance to the relevant test criteria.				
The following tests were performed:				
Test Description	UL 50, CSA C22.2 # 94.1 Clause	UL 50E, CSA C22.2 # 94.2 Clause		
Deflection test (doors and covers)	8.2	--		
Hinge strength test	8.3	--		
External icing test	--	8.5		
Hosedown test	--	8.6		

8.1 Signatures			
A representative sample of the product covered by this report has been evaluated and found to comply with the applicable requirements of the standards indicated in Section 1.0.			
Completed by:	Arianna Fogar	Reviewed by:	Marco De Mattia
Title:	Operations Manager	Title:	Senior Project Engineer
Signature:		Signature:	



Test Report



GR-A2/014403

p.1

client	CASAGRANDE ELETTROCOSTRUZIONI S.p.A. Castel D'Azzano (VR)
equipment under test	Enclosure type CE-LS.
tests performed	1 - Verification of the degree of protection IP56 cat2 2 - Verification of the degree of protection IP66 3 - Hosedown test
normative documents	1 - CEI EN 60529 (1997) 2 - CEI EN 60529 (1997) 3 - Nema Standard publication 250-1997
receipt date of the sample	April 4, 2002
test date:	from May 6, 2002 to May 14, 2002



Customer Qualification



Main Customers Qualification



Quality



Casagrande works in compliance with Quality System certified by CSQ since 1996.
It's Quality System has been certified following ISO 9001:2015 for:
“Design, construction and installation of MV and LV switchboards and of electric industrial plants.
Electromechanical industry assembly and installation”



www.imq.it

CERTIFICATO N.
CERTIFICATE N. 9115.CASL

SI CERTIFICA CHE IL SISTEMA DI GESTIONE PER LA QUALITÀ DI
WE HEREBY CERTIFY THAT THE QUALITY MANAGEMENT SYSTEM OPERATED BY

CASAGRANDE ELETTROCOSTRUZIONI SPA

VIA G. ROSSINI 24 - 37060 CASTEL D'AZZANO (VR)

UNITÀ OPERATIVE / OPERATIVE UNITS

Vedere gli Allegati per le Unità Operative (n° 3 pagine)
View the Annexes for the Operative Units (n° 3 pages)
Operazioni esterne

E' CONFORME ALLA NORMA / IS IN COMPLIANCE WITH THE STANDARD
ISO 9001:2015

PER LE SEGUENTI ATTIVITÀ / FOR THE FOLLOWING ACTIVITIES

Progettazione, costruzione ed installazione di quadri elettrici di media
e bassa tensione e impianti elettromeccanici industriali
*Design, construction and installation of medium and low voltage switchboards
and of electromechanical industrial plants*

Ulteriori informazioni riguardanti l'applicabilità dei requisiti ISO 9001:2015 possono essere ottenute consultando l'organizzazione.
Further clarifications regarding the applicability of ISO 9001:2015 requirements may be obtained by consulting the organization.
Sistema di gestione per la qualità conforme alla Norma ISO 9001 valutato secondo le prescrizioni del Regolamento Tecnico RT-05.
The quality management system conforms to the requirements of the Technical Regulation RT-05.
La presente certificazione si intende riferita agli aspetti gestionali dell'impresa nel suo complesso ed è utilizzabile ai fini della qualificazione
delle imprese di costruzione ai sensi dell'articolo 84 del D.Lgs. 50/2016 e s.m.i. e Linee Guida ANAC applicabili.
For information purposes and to update any eventual variations intervening in the data of the certification of which is the present certificate,
the signatory is requested to contact the n. telephone 0250731 or the e-mail certification.csq@imq.it

IL PRESENTE CERTIFICATO E' SOGGETTO AL RISPETTO DEL
REGOLAMENTO PER LA CERTIFICAZIONE DEI SISTEMI DI GESTIONE
THE USE AND THE VALIDITY OF THE CERTIFICATE SHALL SATISFY THE
REQUIREMENTS OF THE RULES FOR CERTIFICATION OF MANAGEMENT SYSTEMS

DATE:	PRIMA CERTIFICAZIONE FIRST CERTIFICATION	EMISSIONE CORRENTE CURRENT ISSUE	SCADENZA EXPIRY
	1996-04-01	2021-12-10	2024-12-14

IMQ S.p.A. - VIA QUINTILIANO, 43 - 20138 MILANO ITALY
Management Systems Division - Flavio Omaggio



SGQ N° 005 A
Modello degli Azionisti di Milano
Raccomandato da IMQ e CSQ
Modello degli Azionisti di Milano

IAF: 19, 28

La validità del certificato è subordinata a sorveglianza annuale e ricambio completo
del Sistema di Gestione con periodicità triennale.
The validity of the certificate is subordinate to annual audit and a replacement
of the whole management system within three years.



Organismo di Certificazione Federato CSQ



CSQ è la Federazione Italiana di Organismi di
certificazione dei sistemi di gestione aziendali.
CSQ is the Italian Federation of management
system Certification Bodies.



CERTIFICATE
CISQ/IMQ has issued an IQNet recognized certificate that the organization:

CASAGRANDE ELETTROCOSTRUZIONI SPA

VIA G. ROSSINI 24 - 37060 CASTEL D'AZZANO (VR)
VIA BORTOLAZZI 57 - 37060 CASTEL D'AZZANO (VR)
CONTRADA PIANA - Z.I. - 86019 VINCHIATURO (CB)

has implemented and maintains a
Quality Management System

for the following scope:
**Design, construction and installation of medium and low voltage switchboards
and of electromechanical industrial plants**

Further clarifications regarding the applicability of ISO 9001:2015 requirements may be obtained by consulting the organization.

which fulfills the requirements of the following standard:

ISO 9001:2015

Issued on: **2021 - 12 - 10**
Expires on: **2024 - 12 - 14**

This attestation is directly linked to the IQNet Partner's original certificate
and shall not be used as a stand-alone document

Registration Number: IT - 13600



Alex Stoichitulu
President of IQNET



Ing. Mario Romeri
President of CISQ

IQNet Partners*:

AENOR Spain AFNOR Certification France APCER Portugal CCC Cyprus CISQ Italy
CQC China CQM China CQS Czech Republic Cro Cert Croatia DQS Holding GmbH Germany EAGLE Certification Group USA
PCAY Brazil FONDONORMA Venezuela INTEC Colombia Inspexa Serditi Oy Finland INTECO Costa Rica
IRAM Argentina IQA Japan KFD Korea MIRTEC Greece MSZT Hungary Nemko AS Norway NSAI Ireland
NYCE-SIGE Mexico PCBQ Poland Quality Austria Austria RR Russia SII Israel SIQ Slovenia
SIRIM QAS International Malaysia SQS Switzerland SRAC Romania TEST St Petersburg Russia TSE Turkey YUQS Serbia

* The list of IQNet partners is valid at the time of issue of this certificate. Updated information is available under www.iqnet-certification.com

Enviromental Management System has been certified in compliance with ISO 14001:2015 on January 2013 for:
“design, construction and installation of MV and LV switchboards and of electric industrial plants.
Electromechanical industry assembly and installation”



www.imq.it

CERTIFICATO N.
CERTIFICATE N. 9191.CSGN

SI CERTIFICA CHE IL SISTEMA DI GESTIONE AMBIENTALE DI
 WE HEREBY CERTIFY THAT THE ENVIRONMENTAL MANAGEMENT SYSTEM OPERATED BY

CASAGRANDE ELETTROCOSTRUZIONI SPA

VIA G. ROSSINI 24 - 37080 CASTEL D'AZZANO (VR)

SITI / SITES

Vedere gli Allegati per i Siti (n° 2 pagine)
 View the Annexes for the Sites (n° 2 pages)
 Operazioni esterne

E' CONFORME ALLA NORMA / IS IN COMPLIANCE WITH THE STANDARD

ISO 14001:2015

PER LE SEGUENTI ATTIVITA' / FOR THE FOLLOWING ACTIVITIES

Progettazione, costruzione ed installazione di quadri elettrici di media e bassa
 tens-one e impianti elettromeccanici industriali
 Design, construction and installation of medium and low voltage switchboards
 and of electromechanical industrial plants

Certificazione rilasciata in conformità al Regolamento Tecnico ACCREDIA RT-09

IL PRESENTE CERTIFICATO E' SOGGETTO AL RISPETTO DEL
 REGOLAMENTO PER LA CERTIFICAZIONE DEI SISTEMI DI GESTIONE
 THE USE AND THE VALIDITY OF THE CERTIFICATE SHALL SATISFY THE
 REQUIREMENTS OF THE RULES FOR CERTIFICATION OF MANAGEMENT SYSTEMS

DATE:	PRIMA CERTIFICAZIONE FIRST CERTIFICATION	EMISSIONE CORRENTE CURRENT ISSUE	SCADENZA EXPIRY
	2013-01-14	2022-12-06	2025-01-13

IMQ S.p.A. - VIA GUNTILIANO, 43 - 20139 MILANO ITALY
 Management Systems Division - Paolo D'Amico



IAF: 19, 28



SGA n° 004 D
 Issued and Valid until 2025-01-13
 Management n° 004 D
 Issued and Valid until 2025-01-13

La validità del certificato è subordinata al conseguimento e al rispetto dei requisiti
 The validity of the certificate is subordinate to the achievement and to the respect of the requirements

Dispositivo di Certificazione Federale CSQ
 www.imq.it



CSQ è la Federazione Italiana di Organismi di
 Certification of Management Systems
 CSQ is the Italian Federation of Management
 System Certification Bodies



IQNet, the association of the world's top 200
 certification bodies, is the largest provider of management
 system certification in the world.
 IQNet is composed of more than 30 member and world
 top 200 certification bodies of the globe.



Building
 trust
 together.

Certificate

CISQ/IMQ has issued an IQNET recognized certificate that the organization:

CASAGRANDE ELETTROCOSTRUZIONI SPA

VIA G. ROSSINI 24 - 37060 CASTEL D'AZZANO (VR) Italy
 CONTRADA PIANA Z.I. - 86019 VINCHIATURO (CB) Italy
 VIA BORTOLAZZI 57 - 37060 CASTEL D'AZZANO (VR) Italy

has implemented and maintains a
Environmental Management System

for the following scope:

**Design, construction and installation of medium and low voltage
 switchboards and of electromechanical industrial plants**

which fulfils the requirements of the following standard:

ISO 14001:2015

Issued on:	2022/12/06
Expires on:	2025/01/13

Registration Number: **IT - 84628**

Alex Stoichitoiu
 President of IQNET

Mario Romersi
 President of CISQ



This attestation is directly linked to the IQNET Member's original certificate and shall not be used as a stand-alone document.

IQNET Members:
 AENOR Spain AFNOR Certification France APCER Portugal CQC Cyprus CISQ Italy CQC China COM China COS Czech Republic
 Cio Cert Croatia DQS Holding GmbH Germany EAGLE Certification Group USA FCV Brazil FONDONORMA Venezuela ICONTEC
 Colombia IOS Bosnia and Herzegovina Inspecta Serbisint Oy Finland INTECO Costa Rica IRAM Argentina JQA Japan KPO Korea
 LSGA Uruguay MIRTEC Greece MSZT Hungary Nemko AS Norway NSAI Ireland NYCE-SIGE Mexico PCBC Poland Quality Austria
 Austria SII Brazil SIQ Slovenia SRIM QAS International Malaysia SGS Switzerland SRAC Romania TSE Turkey YUGOS Serbia

*The list of IQNET Members is valid at the time of issue of this certificate. Updated information is available under www.iqnet-certification.com

Safety Management System has been certified in compliance with ISO 45001:2018 on November 2013 for: *“design, construction and installation of MV and LV switchboards and of electric industrial plants. Electromechanical industry assembly and installation”*



CERTIFICATO N.
 CERTIFICATE N. **9192.CSG3**

SI CERTIFICA CHE IL SISTEMA DI GESTIONE PER LA SALUTE E SICUREZZA SUL LAVORO
 WE HEREBY CERTIFY THAT THE HEALTH AND SAFETY MANAGEMENT SYSTEM OPERATED BY

CASAGRANDE ELETTROCOSTRUZIONI SPA

VIA G. ROSSINI 24 - 37060 CASTEL D'AZZANO (VR)

UNITA' OPERATIVE / OPERATIVE UNITS

Vedere gli Allegati per le Unità Operative (n° 2 allegati)
 View the Annexes for the Operative Units (n° 2 annexes)

Operazioni esterne

E' CONFORME ALLA NORMA / IS IN COMPLIANCE WITH THE STANDARD

ISO 45001:2018

PER LE SEGUENTI ATTIVITA' / FOR THE FOLLOWING ACTIVITIES

Progettazione, costruzione ed installazione di quadri elettrici di media
 e bassa tensione e impianti elettromeccanici industriali
 Design, construction and installation of medium and low voltage
 switchboards and of electromechanical industrial plants

IL PRESENTE CERTIFICATO E' SOGGETTO AL RISPETTO DEL
 REGOLAMENTO PER LA CERTIFICAZIONE DEI SISTEMI DI GESTIONE
 THE USE AND THE VALIDITY OF THE CERTIFICATE SHALL SATISFY THE
 REQUIREMENTS OF THE RULES FOR CERTIFICATION OF MANAGEMENT SYSTEMS

DATE:	PRIMA CERTIFICAZIONE FIRST CERTIFICATION	EMISSIONE CORRENTE CURRENT ISSUE	SCADENZA EXPIRY
	2013-11-02	2022-10-15	2025-10-31

IMQ S.p.A. - VIA QUINTILIANO, 43 - 20138 MILANO ITALY
 Management Systems Division - Flavio Ormaggio



SCR N° 005 F

IAF: 19, 28

La validità per verifiche di conformità a norme tecniche armonizzate in materia di sicurezza
 del Sistema di Gestione di Sicurezza con procedure di lavoro
 The validity of this certificate is extended to safety and health and a management
 system for safety management system under the scope



Organismo di Certificazione Federato CISQ
 www.imq.it



www.cisq.com

CISQ è la Federazione Italiana di Organismi di
 Certificazione dei sistemi di gestione aziendali.
 CISQ is the Italian Federation of management
 system certification bodies.



Building
 trust
 together.

Certificate

CISQ/IMQ has issued an IQNET recognized certificate that the organization:

CASAGRANDE ELETTROCOSTRUZIONI SPA

VIA G. ROSSINI 24 - 37060 CASTEL D'AZZANO (VR) Italy

CONTRADA PIANA Z.I. - 86019 VINCHIATURO (CB) Italy

VIA BORTOLAZZI 57 - 37060 CASTEL D'AZZANO (VR) Italy

has implemented and maintains a
Occupational Health and Safety Management System

for the following scope:

**Design, construction and installation of medium and low voltage
 switchboards and of electromechanical industrial plants**

which fulfils the requirements of the following standard:

ISO 45001:2018

Issued on: **2022/10/15**
 Expires on: **2025/10/31**

Registration Number: **IT - 91686**

Alex Stoichitoiu
 President of IQNET

Mario Romers
 President of CISQ

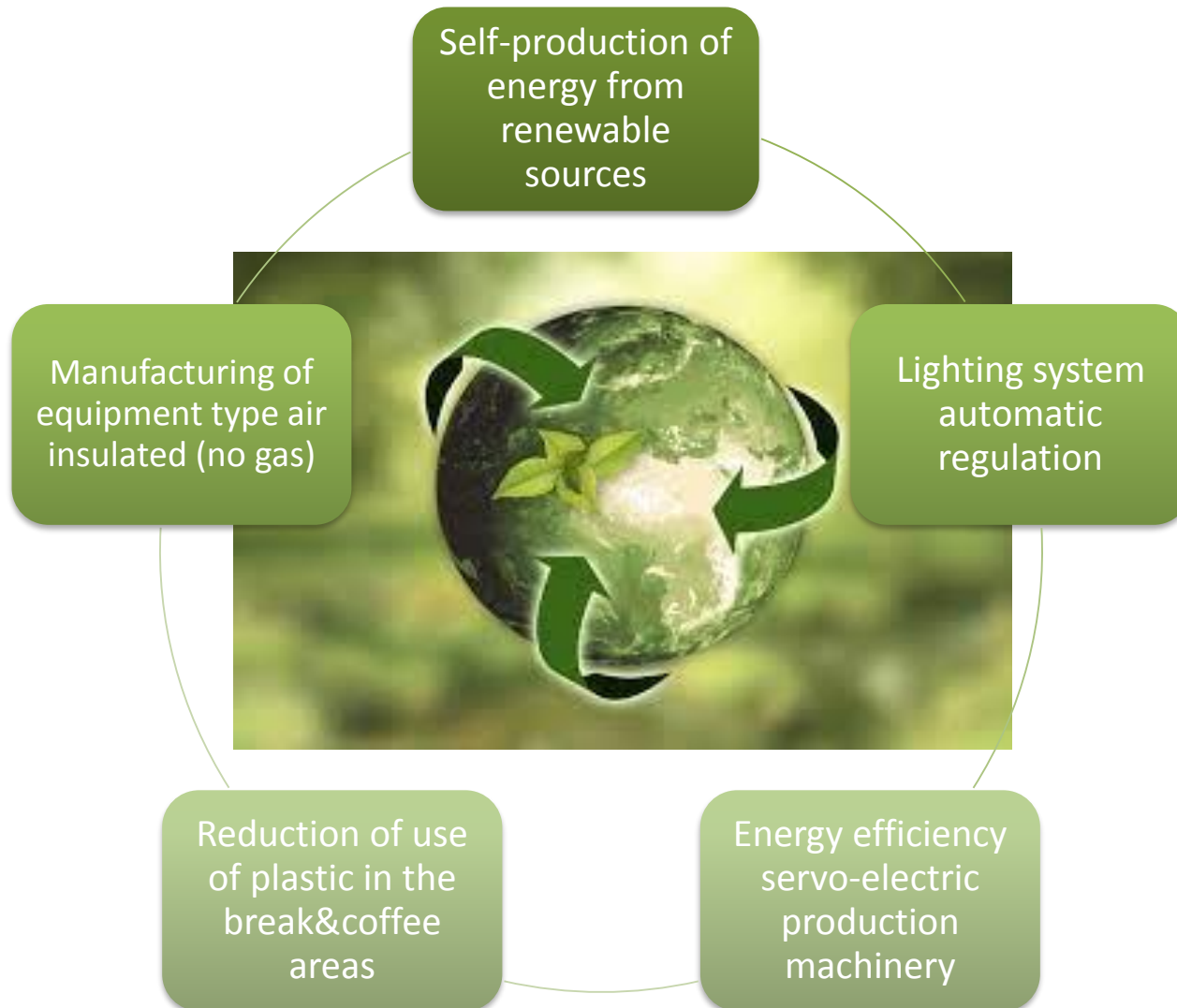


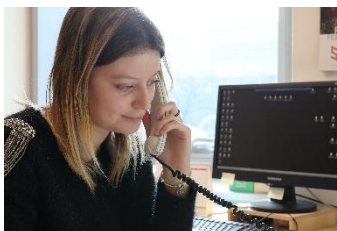
This attestation is directly linked to the IQNET Member's original certificate and shall not be used as a stand-alone document.

IQNET Members:
 AENOR Spain AFNOR Certification France APCER Portugal CCC Cyprus CISQ Italy CQC China CQM China COS Czech Republic
 Cro Cert Croatia DQS Holding GmbH Germany EAGLE Certification Group USA FCAV Brazil FONDONORMA Venezuela ICONTEC
 Colombia ICS Bosnia and Herzegovina Inspira Sertifikat Oy Finland INTECO Costa Rica IRAM Argentina JQA Japan KPG Korea
 LSGA Uruguay MIRTEC Greece MSZT Hungary Nemko AS Norway NSAI Ireland NYCE-SIGE Mexico PCBC Poland Quality Austria
 Austria SII Israel SIQ Slovenia SIRIM QAS International Malaysia SGS Switzerland SRAC Romania TSE Turkey YUGS Serbia

* The list of IQNET Members is valid at the time of issue of this certificate. Updated information is available under www.iqnet-certification.com

Sustainability actions





Casagrande Elettrocostruzioni SpA
Via Guglielmo Bortolazzi, 57
37060 Castel d'Azzano (Verona – Italy)
tel. 0039.045.8546511 – fax 0039.045.8520214
mailto: info@casagrande.vr.it
web site: www.casagrande.vr.it