

# SATIR

LEADING THE WAY IN  
THERMAL IMAGING

## PRODUCT CATALOGUE

# SATIR

### SATIR Europe (Ireland) Company Limited

Marleys Business Park, Marleys Lane, Drogheda, Co. Louth, A92 PX6P, Ireland  
Tel: + 353 (0) 41 9844371 Email: enquiry@satir.com

[www.satir.com](http://www.satir.com)

 [www.satir.com](http://www.satir.com)



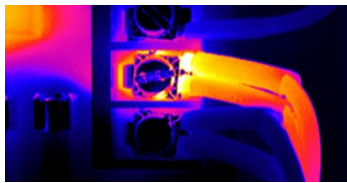
## Company Profile

SATIR European Headquarter was founded in 2008 in Dundalk, Ireland. In 2016, SATIR European Headquarters moved to the facility in Drogheda Co. Louth. The facility comprises of our sales & marketing team, production team and service centre, enabling us to offer product assembly, servicing, repairs and calibration for all products distributed into the European Union and strategic countries around the world. In 2012 SATIR Europe became ISO9001 certified. SATIR prides itself on providing top quality products.

SATIR is one of the world's best thermal imaging camera manufacturers focusing on development, production and marketing. These cameras play a significant role in a wide range of industrial, commercial and governmental applications, including but not limited to predictive & preventative maintenance, non-destructive testing, process control, research & development, building surveying and security.

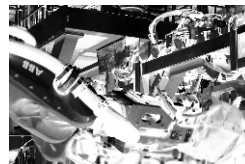
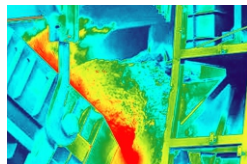
# SATIR Thermal Vision Glass

Innovative Device for Industrial Inspection



## Features:

- Hands-free operation
- Voice control
- Remote assistance
- HD thermal imaging

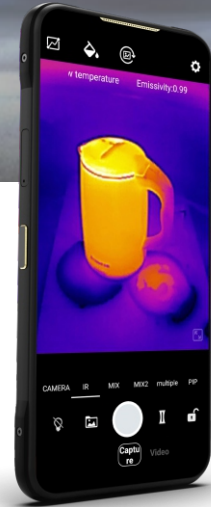


## SATIR Thermal Vision Specification

Model	SATIR Thermal Vision 256
Infrared	
Detector resolution	256 x 192
FOV	40° x 30°
Palette	9
CCD	
Display	LCOS, 1920 x 1080
Resolution	16million
FOV	40°x30°
Frame rate	60Hz
AR glasses	
Contrast	≥ 200:1
Frame rate	25Hz
Eye movement range	9 x 6 mm
Mirror distance	18 mm
Optical Distortion	< 4%
Brightness uniformity	≥50%
Lens transmittance	> 80%
Pixel size	6.3 x 6.3 um
Lens thickness	1.45 mm
size	30.5cm x 18.2cm x 9.6cm
Temperature measurement	
Measurement range	-20°C~550°C
Measurement accuracy	±2°C or ±2%
Measurement mode	3 point, 2 line, 3 area, maximum and minimum temperature capture points
Function	
Image mode	IR/CCD/Fusion
Battery life	3~4h, Replaceable battery
Photo/Video	Yes
Shutter/Frozen	Yes
Mobile communication	Support 4G, can expand to 5G in the future
Parameter settings	Emissivity, Ambient temperature, Distance, Temperature units
Voice function	Yes
Remote assistance	Yes
Encapsulation	Ip54
Multilingual menu	Chinese, English, German, French, Spanish, Russian, Japanese, Korean
WIFI, GPS and Bluetooth	Yes
Screen function	Yes

# S1

## Smart Thermal Imager



### Features:

- Smart Device Platform
- Open Android Platform
- Easy to Use Device
- 256x192 IR Detector
- 48MP Digital Camera
- Temperature Range of -20°C ~ + 550°C

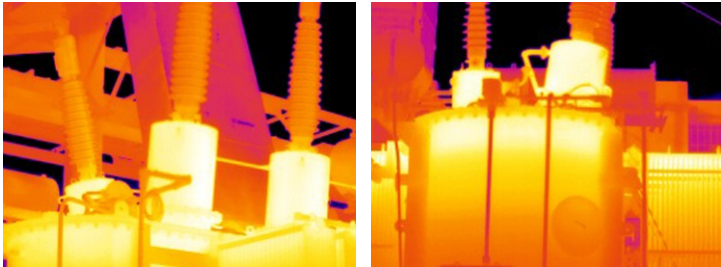


### S1 Specification

Model	S1
Infrared	
Detector type	UFPA
FOV	55.6°x 42°
Detector resolution	256 x 192
Pixel-pitch	12um
Image presentation	
Image mode	Infrared/Visible/Fusion
Flash	Support + flashlight
Image storage	
SIM Type	Two nano cards
Add-in card type	Support Micro TF
Temperature measurement	
Measurement range	-20°C ~ +550°C
Measurement accuracy	±2°C or 2% of readings
Protective performance	
Encapsulation	IP68
Shock/Vibration resistance	25G
Physical characteristic	
Size	81.5mm x170xmm (12+0.5) mm
Power system	
Battery capacity	5000-5500mAh, Support fast charge QC4.0 (built-in battery)
Features	
5G data connection	5G NR X51 modem (speed Depends on mmWAVE or Sub 6)
4G data connection	DL:2.0Gbps CAT20/UL:316Mbps CTA13
Fingerprint	Side fingerprint
GPS	Support GPS/Glonass/Galileo/Beidou+A-GPS
WLAN/WIFI	802.11 b/g/n 2.4 GHz, 802.11. a, 5 GHz, 802.11.ac, 5 GHz
Bluetooth	Bluetooth 5.1
Color	Black
CPU	Qualcomm Snapdragon SM 4350 (Snapdragon 480 5G platform)
CPU frequency	Octa-core 2xGold(A76 based)+6x Silver(A55 based)
Operating system	Android 13 (support OTA system upgrade)
Memory capacity	256GB eMMC + 8GB DDR4
Screen display	6.57-inch FHD+ (20:9 full screen), resolution 2520X1080
Rear camera	48 (64) MP main camera + 8MP depth of field. Support photo, video, panoramic photo, Auto focus, auto flash, HDK, continuous shooting, etc.

# D160-PRO

## Entry-level Thermal Imager



### Features:

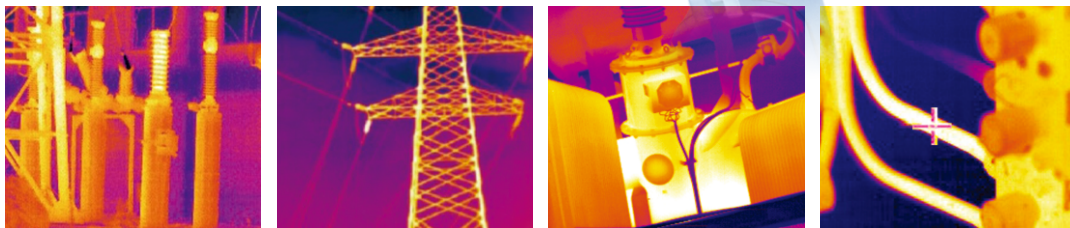
- IR detector resolution 160×120 pixels
- Support center spot, auto-hot/auto-cold measurement mode
- Measurement range: -20°C~550°C
- Measurement accuracy: ±2°C or 2% of readings
- IP54 and 2 meters drop resistance
- 8-hour battery life

### D160-PRO Specification

Model	D160-PRO
Image performance	
FOV/Min. focus distance	50°x 38.3°/15cm
Spatial resolution	5.4mrad
NETD	≤0.05C@30°C
Detector type	UFPA
Detector resolution	160 x 120
Spectral range	7.5~14μm
Focus	Fixed focus
Image presentation	
Image mode	IR only
LCD display	2.4 inch LCD screen (320×240)
Frame rate	25Hz
Temperature measurement	
Measurement range	-20°C~550°C
Accuracy	2°C or ±2% of readings
Measurement mode	Center spot, auto-hot/auto-cold
Correction	Emissivity, distance
Palette	Iron/White hot/Black hot/Rainbow
Image storage	
Type	8GB Micro SD card, up to128G(optional)
Image format	.JPEG
Power system	
Battery type	Rechargeable li-ion battery
Battery operating time	8 hours
Power interface	Micro USB direct charge
Working voltage	DC 5V
Environment specification	
Operating temperature range	-10°C~ +50°C
Storage temperature range	-40°C~ +70°C
Humidity	10% to 95%, non-condensing
Encapsulation	IP54
Shock	25G
Vibration	2G
Drop resistance	2m
Physical characteristic	
Dimension	96 mm x 78 mm x 59 mm
Weight	350g(Including battery)
Tripod mounting	1/4" _20
Additional features	
Laser pointer	Yes

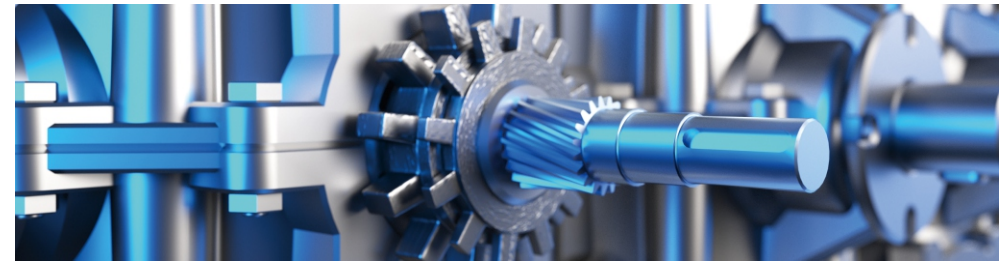
# T256

## Entry-level Portable Thermal Imager



### Features:

- 13MP Digital Camera
- 256x192 resolution detector
- Measurement range: -20°C~550°C
- WIFI, Bluetooth, LED, Speakers
- Configure 64G large-capacity memory card



### T256 Specification

Model	T256
Infrared	
Detector type	UFPA
Resolution	256×192
Pixel pitch	12μm
NETD	< 50mK @25°C
Focus	Fixed focus
FOV	56°× 42°
Image display	
Image mode	IR/CCD/Fusion
LCD	2.8 inch with touch (640×480)
Save image format (IR/CCD)	JPG
Video format	Mp4
Temperature measurement	
Measurement range	-20°C ~ 550°C
Accuracy	±2°C or ±2% of readings
Power	
Battery type	3.7V 3500mAH Removable li-ion battery
Operation time	5h
Environment	
Encapsulation	IP54
Shock	25G, 11ms
Vibration resistance	2G
Operation temperature range	Image: -20°C ~ 60°C Industrial measurement: -10°C ~ 50°C
Storage temperature range	-45°C ~ 85°C
Humidity	10% to 95%, non condensing
Size	172mm x 80mm x 162mm
Weight	< 500g (With battery)
Other function	
External TF card	64G Byte
Interface	Type-C, HDMI
WiFi,Bluetooth,Illuminator	Yes



# D300/D600

## Most Innovative Thermal Imaging Camera

### Features:

- Digital Zoom
- IR/Digital/Duo-Vision/Duo Vision Plus
- Laser Pointer
- 8 Hours Battery Life
- Adaptable LCD Display
- Easy to use interface
- 5 MP High Definition Camera
- Thermal Video Recording
- WIFI Function
- 8 Palletes, including iron, iron inverted, etc..

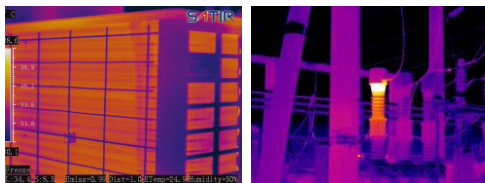
### D300/D600 Specification

Model	D300	D600
<b>Image Performance</b>		
FOV/Min. Focus Distance	24° x18°/0.15m	
Spatial Resolution	1.1mrad	0.65mrad
Thermal Sensitivity	≤0.05°C@30°C	
Detector Type	UFPA	
Resolution	384x288	640x480
Spectral Range	8-14um	
Focus	Motor/Auto	
Zoom	1x to 10x	
<b>Image Presentation</b>		
Image Mode	IR/CCD/Duo-vision/Duo-vision Plus	
LCD Display	3.5" Capacitive touch screen	
Visible Pixels	High definition CCD , 5MP	
Video Output	NTSC (60Hz) or PAL (50Hz) composite video	
<b>Temperature Measurement</b>		
Measurement Range	-20°C ~ +600°C, up to +1500°C(optional)	
Accuracy	±2° or ±2% of readings	
Measurement Mode	8 movable spots, auto hot/cold spot, profile, 2 area boxes, isotherm, line	
Correction	Ambient temperature/Emissivity / Humidity / Distance	
Pseudo-color	Iron, Iron inverted, Rainbow,Feather, Grey and Grey inverted.	
Alarm	Yes	
<b>Image Storage</b>		
Type	16GB TF card	
Image Format	IR Image: .JPG(thermal/Visual) CCD Image: .JPG	
Video Format	.MPEG	
Annotation	Voice/ Note Annotation	
<b>Power System</b>		
Battery Type	Built-in rechargeable lithium-ion battery	
Charge Interface	Type-C	
Battery Operating time	8 hours	
Power Management	Auto shut off / Sleep mode	
<b>Environment Specification</b>		
Operating Temperature Range	-20°C to +50°C	
Storage Temperature Range	-40°C to +70°C	
Humidity	10% to 95%, non-condensing	
Encapsulation	IP54	
Shock/Vibration	25G/2G	
Drop Resistance	2m	
<b>Physical Characteristic</b>		
Size	232mm×115mm×168mm	
Weight	Less than 900g	
Tripod Mounting	1/4" _20	
<b>Additional Features</b>		
Illuminator	Yes	
Laser Pointer	Yes	
Video Record	Yes	
Ports	USB port , Analog video output	
Bluetooth	Yes	
Available Optional Lenses	7° , 12° , 48°	



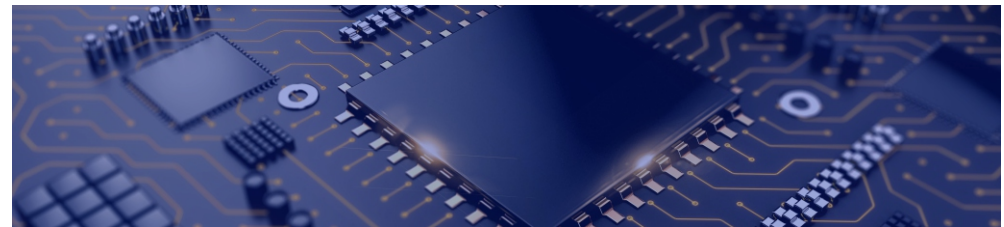
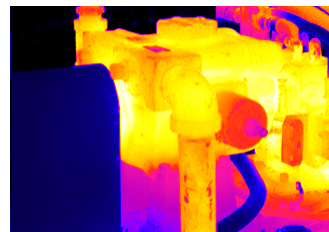
# i-Series

Thermal Camera with Android App



## Features:

- Android App
- Laser Pointer
- Touch Screen
- WIFI Connectivity
- 8 MP Digital Camera
- New Fixed Screen Design
- 160x120/384x288/640x512 IR Detector
- Straightforward operation from the box



## i-Series Specification

Model	i-160	i-384	i-640
<b>Image performance</b>			
FOV	25°x19°	37.5°x28.5°	25°x19°
Thermal Sensitivity (N.E.T.D)	50mK@25°C,F#=1.0		30mK@25°C,F#=1.0
Focal Length	6.7mm	9.7mm	25mm
Detector type	UFPA		
Detector Resolution	160X120	384X288	640X512
Spectral range	8-14um		
Focus Type	Manual		Manual/Motorized/ Auto/Laser Assisted Focus
Colour Palette	7 Colour Palettes includes: Iron red & Rainbow		
<b>Measurement</b>			
Temperature Range	-20°C ~ + 550°C		-20°C ~ + 650°C
Accuracy	±2°C or ± 2% of readings		
<b>Image Presentation</b>			
LCD Display	3.5" LCD Capacitive Touch Screen		4.3" Capacitive Touch Screen
Digital Zoom	1x,2x,4x		1x to 8x
Frame Rate	25Hz		
Image Mode	IR/CCD/Fusion/PIP		
<b>System Function</b>			
Laser Pointer	Yes		
Storage	16GB	64GB	
Extra Functionality	Wifi, text & voice annotation, illumination		
<b>Physical Characteristics</b>			
Weight	<660g		Approx.1000g
Dimensions	244x100x104mm		284.7 x 120.6 x 124.5mm
Operation Temperature Range	-10°C~50°C		
Humidity	≤95%		
Storage Temperature Range	-40°C ~+70°C		
Encapsulation	IP54		
Battery Type	Rechargeable Lithium Battery		
Battery Working Time	4 Hours		
Interface	Type-C		
Accessories	Optional Battery, charger, data cable, high-strength shock resistant case		



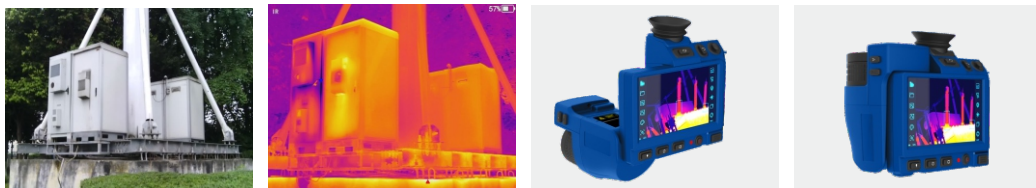


# PX-100

## High-end Thermal Imager for Industrial Maintenance

### Features:

- 1024x768 Detector Resolution
- 5 Mega Pixels HD Visual Camera
- IR/Digital/Duo-vision/PiP
- Manual/Motorized/Auto Focus
- Bluetooth/WIFI/4G/USB/HDMI Transmission
- QR Code and Barcode Function
- Super Resolution



### PX-100 Specification

Model	PX-100
Image Performance	
Detector type	UFPA
Detector resolution	1024x768
Thermal sensitivity	≤0.04°C@30°C
Spatial resolution	0.36mrad
FOV/Min. Focus distance	28°x21°/0.35m
Spectral range	7.5-14um
Frame rate	30Hz
Focus	Manual/Motorized/Auto
Digital zoom	1x to 10x
Image presentation	
LCD Display	5.8 inch capacitive touch screen
Image mode	IR/CCD/Duo-vision/PiP
Digital camera	High definition CCD, 5 mega pixels
Image Enhancement	YES
Image storage	
Type	32GB removable SD card
Temperature measurement	
Measurement range	-20~650°C, up to 2000°C(optional)
Pseudo color	10 types including Iron, Iron-inverted, Grey, Grey-inverted
Analysis tool	10 movable spots, auto hot/cold, 10 area boxes, 5 line
Accuracy	±1°C or 1% of readings
Environment specification	
Operating temperature range	-20°C~+55°C
Ambient temperature range	-40°C~+70°C
Protective performance	
Encapsulation	IP54
Shock/Vibration	25G/2G
Physical characteristic	
Weight	1.6KG
Dimension	210x119x174 mm
Power system	
Battery operating time	> 3 hours
Ports	
Output ports	Type-C USB, Bluetooth, WIFI, HDMI
Other features	
Viewfinder	Yes, 1024x768 pixels
Illuminator	Yes
Laser pointer	Yes
Laser ranging	Yes, 40 meters
QR code and Barcode scan	Yes
Video record	Yes
GPS	Yes
4G	Yes



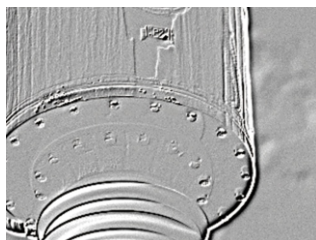
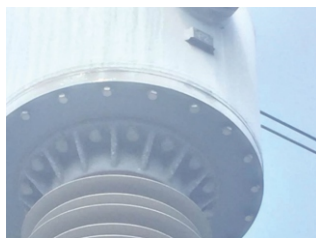
# V Series

## Thermal Imager for Gas Leakage Detection

### Multiple Gas Leakage Detection

In addition to detect SF6 gas leakage, V80 gas leakage thermal imager can detect the leakage of various gas included acetyl chloride, acetic acid, allylbromide, allyl propyl fluoride, ammonia, methylsilane, bromine methane, chlorine dioxide, cyanoethyl acrylate, ethylene, furan, hydrazine, vinyl ether, acrylonitrile, methyl ethyl ketone, methyl vinylketone, acrolein, acrylic, trichloroethylene, uranylfluoride, vinyl chloride and others.

V90 Methane and Flammable gases leakage thermal imager can detect methane gas, and other organic gas included benzene, ethanol, ethyl benzene, heptane, hexane, isoprene, methanol, ethyl ketone, methyl isobutyl ketone of (a), methyl isobutyl ketone, octane, pentane, 1 - pentene, toluene, xylene, butane, ethane and methane, propane, ethylene, propylene and others.



### V Series Specification

Model	V80	V90
<b>Image Performance</b>		
FOV	11° x 8.8°/24° x 18°	
Spatial Resolution	0.6mrad	
Thermal Sensitivity	0.015°C at 30°C	
Detector Type	Cooled detector	
Resolution	320x256 pixels	
Spectral Range	10.3~10.7 μm	3.2~3.5 μm
Focus	Auto / Manual	
Electronic Zoom	1X~8X	
Responsivity	0.001 ml/s	
Image frequency	50Hz/60Hz	
Start-up time	< 7 min	
Laser Pointer	Class 2	
<b>Image Presentation</b>		
CCD camera performance	Build-in 5million pixels digital camera	
Video output	AV	
External display	3.5"LCD with screen	
View finder	Build-in TFT LCD with high resolution (800x600 pixels)	
Palette	8 palettes	6 palettes
<b>Temperature Measurement</b>		
Measurement Range	-40°C~+500°C	
Accuracy	±2° or ±2% of readings	
Measurement Mode	Automatic tracking Max / with temperature data	
Emissivity correction	Variable from 0.01 to 1.0	
<b>Data Storage</b>		
Type	Removable SD-Card 32G	
Video Storage	AV Recording of 16 bit fully radiometric IR-video to SD-card	
Video Format	IRV: 16-bit full-motion infrared video stream containing all temperature data Standard video format: 16-bit full-motion infrared video stream without temperature data	
Image Format	JPEG/IMA format, with temperature measurement data stream	
<b>Power System</b>		
Battery Type	Li-ion, rechargeable, field replaceable	
Battery Operating time	≥2.5 hours	
Charging system	2-bay intelligent charger ( Optional: External power cable)	
<b>Environment Specification</b>		
Operating Temperature Range	-20°C to +50°C	
Storage Temperature Range	-40°C to +70°C	
Humidity	10% to 95%, non-condensing	
Encapsulation	IP54	
Shock	25G	
Vibration	2.5G	
<b>Physical Characteristic</b>		
Size	292 x 148 x 138mm	
Weight (Include battery)	≤2.40kg	
<b>Additional Features</b>		
Detectable Gases	Sulfur Hexafluoride, Acetyl Chloride, Acetic Acid, Allyl Bromide, Allyl Chloride, Allyl Fluoride, Ammonia (NH3), Bromomethane, Chloride Dioxide, Ethyl Cyanoacrylate, Ethylene, Furan, Hydrazine, Methylsilane, Methyl Ethyl Ketone, Vinyl Cyanide, Methyl Vinyl Ketone, Propene, Tetrahydrofuran, Vinyl Ether, Trichloroethylene, Uranyl Fluoride, Vinyl Chloride, Propenal	B E E enzene, thanol, thylbenzene, H H I M M M O P eptane, exane, soprene, ethanol, EK, IBK, ctane, entane, 1-Pentene, Toluene, Xylene, Butane, Ethane, Methane, Propane, Ethylene, Propylene, Acetone.

# GF5000

## Multifunctional Firefighting Thermal Imaging Camera

### Design based on USA NFPA standard

- Ergonomic design, easy to operate
- IP67 protection grade, dustproof and waterproof
- temperature strip dynamic display
- heat resistance material, ensure internal electronic components operate normally
- real-time temperature measuring at fire scene, indicating areas with high danger
- multiple operation mode, can shoot image and video quickly

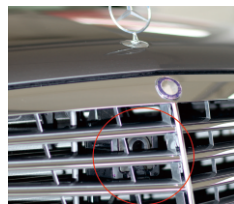
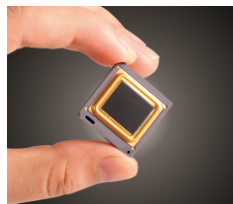


### GF5000 Specification

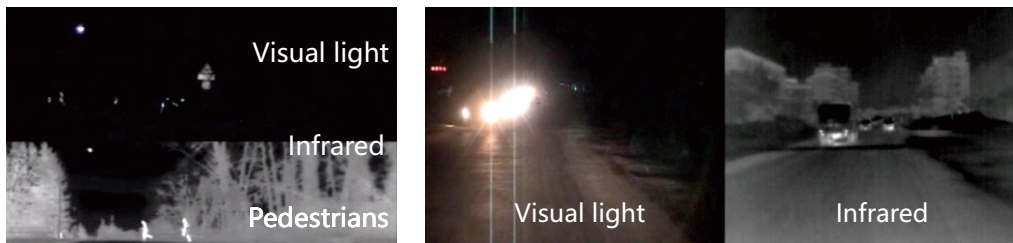
Model	GF5000
Infrared	
Detector type	UFPA
Resolution	384x288
FOV	52°x39°
Spatial resolution	2.4mrad
Thermal sensitivity(N. E. T. D)	≤0.05°C@30°C
Focus	FIXED
Minimum focusing distance	0.5m
Spectral range	8-14μm
Electronic magnification	1x-4x
Image presentation	
Display Type	High Temperature Resistance TFT LCD Display
Video format	MPEG(thermal/Visual)
Image Mode	Basic Mode/ Enhanced Mode
Video output	NTSC(60HZ) or PAL(50Hz)
Image format	JPG(thermal/Visual)
Image Storage	
Type	Built-in storage (Flash Memory or 16GB SD card)
Temperature measurement	
Measurement range	-20°C ~ +250°C, up to +1000°C(optional)
Measurement accuracy	High-Sensitive(-20°C ~ +250°C): ±2°C or 2% of readings Low-Sensitive(+250°C ~ +1000°C): ±10°C or 10% of readings
Measurement mode	Auto hot/cold capture spot , Center point measurement
Alarm	YES
Battery system	
Battery type	High-temperature explosion proof 3.7V Rechargeable Lithium-Ion battery
Battery operating time	>4.5 hours
Recharging time	3 hours
Low Power Prompt	YES
Environment specification	
Operating temperature range	Long time to work: -20°C to +55°C Short time to work: +55°C to +260°C
Encapsulation	IP67
Humidity	10%~98% non-condensing
Shock resistance	25G
Vibration resistance	2G
Water resistance	Under 1 meter, work 30 minutes
Physical characteristics	
Camera weight	<1.5kg(with Battery)
Camera size(LXWXH)	≤240 mm x 109mm x 140mm
Features	
Ports	Composite port(Recharging、 Data、 Video Output)
Laser pointer	YES

# NV628

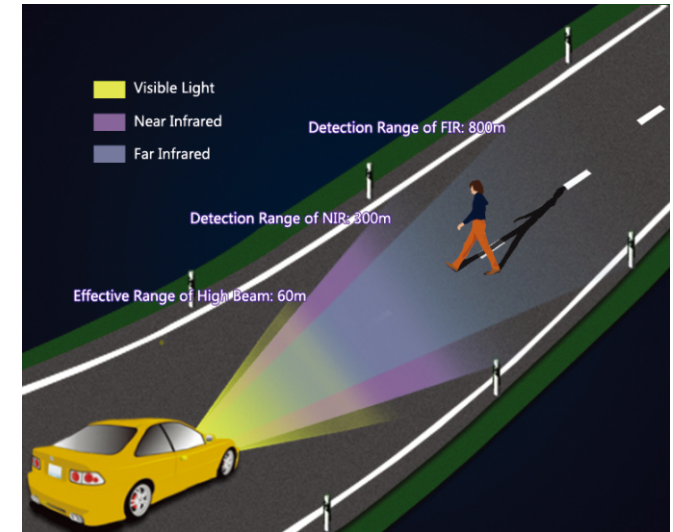
Automotive assistance system for night safety driving



Prevents the disadvantages of glare from oncoming vehicles headlights



Infrared thermal optical system design technology

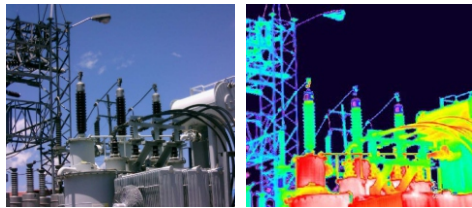


## NV628 Specification

Model	NV628
Image performance	
FOV	28°×21°
Spatial resolution	1.27mrad
Detector type	UFPA (Uncooled focal plane array)
Detector resolution	384x288
Spectral range	8-14um
LCD Display	Car built-in or External monitor
Video output	NTSC (60Hz) or PAL (50Hz)
Power supply	DC12V 3A, can be powered directly from car cigarette lighter
Encapsulation	IP69K
Shock	25G
Vibration	2G
Weight	400g
Size(L*W*H)	81.5mm×57.5mm×57.5mm
Recognition distance	
Recognition Pedestrian(1.7m)	>300m
Recognition Vehicle	>800m

# JKZ365

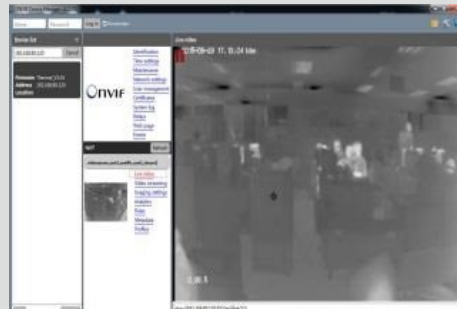
## Double Vision Temperature Monitoring and Software System



### Key Features:

- Dual camera for complete monitoring
- Temperature Alarms –16x Area boxes ,2x Lines or 20x Spots
- 8/15/25mm Optional fixed lenses available upon request

The JKZ365 is SATIR newest addition to our fixed camera range. It combines both thermal and visual imaging together with some AI technology so different parameters can be set up to activate alarms for over temperature applications.



## JKZ365 Specification

Model	JKZ365		
Image Performance			
Detector Type	Uncooled IRFPA Microbolometer		
Detector Resolution	384x288		
Pixel Size	17µm		
Thermal Sensitivity (N.E.T.D)	40mK @F1.0, 300K		
Resolution	384×288		
Spectral Range	8-14µm		
Image Setting	Polarity LUT/ DVE/ Mirror/ FCC/ /3D DNR Brightness Contrast/ROI		
Colour Palettes	Black-Heat /White-Heat/ Rainbow/Iron-Red up to 17		
Thermal Lens			
Lens Type	Fixed		
Focal Length	8mm	15mm	25mm
Angle of View	H:46° V:35.3°	H:25.5° V:19.2°	H:15.4° V:11.6°
Visible Camera			
Image Sensor	1/2.8" Sony C MOS		
Effective Resolution	2048x1536		
Min. Illumination	Color: 0.01Lux @(F1.2, AGC ON), B/W: 0.1Lux		
S/N Ratio	More than 55dB		
Visible Lens			
Focal Length	4.5~135mm		
Max Aperture	F1.6~F4.4		
Angle of View	H:59.8° ~2.3°		
Optical Zoom	30x		
Focus Control	Auto/Manual		
Close Focus Distance	100mm~1500mm (0.33ft~3.28ft)		
PTZ			
Pan/Tilt Range	Pan:0°~360° endless; Tilt: +90°~-90°		
Pan/Tilt Speed	Pan:0.01°~30° /s; Tilt:0.01°~10° /s		
Preset Speed	Pan:0.01°~30° /s; Tilt:0.01°~10° /s		
Presets	400		
PTZ Mode	8 Auto Scan, 12 Tour, 6 Track		
Speed Setup	Auto/Manual (0-8),		
Power Off Memory	Support		
Idle Motion	Activate Preset/Scan/ Tour/Pattern if there is no		
Protocol	SN-SD, Pelco-D		
Video and Audio			
Compression	H.265,H.264,MJPEG		
Frame Rate	Main Stream: Thermal: D1@25/30fps Visible: 2048x1536 @25/30fps Sub Stream: Thermal: CIF @25/30fps Visible: D1/VGA/640X360/CIF/ QCIF/QVGA @25/30fps		
Bit Rate Control	CBR/VBR		
Bit Rate	Thermal: 100Kbps~6Mbps Visible: Main Stream: 500Kbps~12Mbps;		
Region of Interest	Off/On (8 Zone, Rectangle)		
Electronic Image Stabilisation (EIS)	N/A		
Digital Zoom	16x		
Mirror/Defog/Motion Detection	Support		
Privacy Masking	Off/On (4 Areas, Rectangle)		
DVE Image Enhance	Support		
Audio Compression	G.711,AMR,RAW_PCM (Optional)		
Intelligence			
Intelligent Functions	Motion Detection, Disk Alarm, I/O alarm, Temperature		
IVS	Perimeter, Single Virtual Fences, Double Virtual Fences,		
Temperature Detection			
Detection Preset	Spot:20, Line:2, Area:16		
Temperature Alarm	Over temperature alarm, Temperature difference alarm		
Accuracy	±2°C/±2%		
Effective Temperature Working	-30°C~60°C		
Theory of Temperature Measurement	-40°C~150°C, up to 500°C(optional)		
Temperature Display Mode	Temperature target > 5°C, Display absolute temperature value, Temperature target ≤5°C Display relative temperature value (temperature difference DEV = highest value -		
Network			
Ethernet	RJ-45 (10/100 Base-T)		
Protocols	IPv4/IPv6 ,HTTP,RTSP/RTP/RTCP, TCP/UDP, DHCP, DNS, PPPoE, SMTP, SIP ,802.1x		
Interoperability	ONVIF, CGI		
Streaming Type	Unicast		
Max, User Access	10 Users		
Edge Storage	NAS Local PC for instant recording , Micro SD card 128GB		
Interface			
Ethernet	1 Ethernet (10/100 Base-T) R-45 Connector		
Audio	N/A		
Rs485	Support		
BNC Output	Output		
Reset Button	Support (Built-in)		
General			
Power Supply	DC24V		
Power Consumption	Max 30W		
Operating Temperature	-30°C~60°C (-22°F~140°F)		
Storage Conditions	0~90% RH		
Certifications	CE/FCC		
Ingress Protection	IP66		
Casing	Metal		
Dimensions	322x192x163mm		
Net Weight	5KG		

# JK-SERIES

The JK-Series features two models the JK400 and the JK600



## Key Features:

- 400x300/640x512 IR detector
- Multiple Lens Option
- ONVIF/CGI/SDK Compatibility
- Multiple Measurement Tools
- DVE Imaging
- Standalone Operation



## JK-Series Specification

Model	JK400	JK600
<b>Image Performance</b>		
Detector Type	Uncooled IRFPA Microbolometer	
Detector Resolution	400x300	640x512
Thermal Sensitivity (N.E.T.D)	40mK @F1.0, 300K	
Spatial Resolution	1.09mrad	
Spectral range	7.5~14μm	
Colour Palette	Black-Heat /White-Heat/Rainbow/Iron-Red up to 17 modes	
Lens Type	Fixed	
Electronic Zoom	1X~8X	
Lens Focus	Manual Focus	
<b>Video &amp; Audio</b>		
Compression	H.265,H.264, MUPEG	
Frame Rate	Main Stream: D1 @25/30fps	
Bit Rate Control	CBR/VBR	
CCD camera performance	100Kps~6Mbps	
Region of Interest	Off/On (8 Zone, Rectangle)	
Digital Zoom	16x	
Mirror/Defog/Motion Detection	Support	
Privacy Masking	Off/On (4 Area, Rectangle)	
DVE Image Enhance	Support	
Audio Compression	G.711,AMR,RAW_PCM (Optionall)	
<b>Intelligence</b>		
Intelligent Functions	Motion Detection, Disk Alarm, I/O alarm, Temperature alarm	
IVS	Perimeter, Single Virtual Fences, Double Virtual Fences, Object left, Object Removed	
Detection Mode	Spot, Line, Area	
Measurement Tools	3 temperature measurement rule types, 20 rules (20 points/2 lines/16regions)	
Temperature Alarm	Over temperature alarm, temperature difference alarm	
Temperature Display Mode	Temperature Target ≤5°C, Display absolute temperature value, Temperature value(temperature difference DEV= highest value- average)	
Accuracy	±2°C/±2%	
Environment Working Temperature	-40°C~60°C (-104°F~140°F)	
Measurement Range	-40°C~550°C (-104°F~1022°F)	
<b>Network</b>		
Ethernet	RJ-45 (10/100 Base-T)	
Protocols	IPv4/IPv6,HTTP,RTSP/RTP/RTCP,UDP,DHCP,DNS,PPPOE,SMTPIP802.1x	
Interoperability	ONVIF,CGI,SDK	
Streaming Type	Unicast	
Max. User Access	10 Users	
Edge Storage	NAS Local PC for instant recording Micro SD card 128GB	
<b>Interface</b>		
Ethernet	1 Ethernet (10/100 Base-T) RJ-45 Connector	
Audio Interface	1ch Audio In, 1ch Audio Out	
Alarm	2ch Alarm In, 2ch Alarm Out	
RS485/BNC Output/Reset Button	Support	
<b>General</b>		
Power Supply	DC12V/POE (IEEE 802, 3af)	
Power Consumption	Max 5W	
Operating Temperature	-40°C~60°C (-104°F~140°F)	
Storage Conditions	0~90% RH	
Certifications	CE/FCC	
Dimensions	110x388mm	
Net Weight	1.9KG	



# FSD256

## Fire and Smoke Detection Thermal Camera



### Features:

- Uncooled VOx Micro bolometer with 256×192 resolution
- Thermal: 3.5 mm fixed lens, Visible: 4 mm fixed lens
- Support Human, Vehicle, Fire and Smoking detection
- Support 3 temperature measurement rule types (Spot, Line, Area)
- Image processing technology: DVE, 3D DNR, Defog, WDR
- Built-in Microphone and Speaker, support sound-light alarm
- Smart IR distance up to 35m
- Support I/O alarm, RS485, Micro SD card
- DC12V/DC24V, PoE power supply

## FSD256 Specification

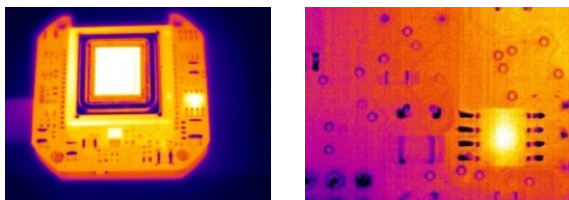
Model	FSD256
Thermal Camera	
Image Sensor	Vanadium Oxide Uncooled Focal Plane Arrays
Resolution	256×192, Image can be scaled up to 704×576
Pixel Size	12um
Spectral Range	8-14μm
Thermal Sensitivity (NETD)	≤ 60mK
Image Setting	Brightness/Sharpness/Contrast/Mirror/FFC/3D DNR
Color Palettes	17 (White-hot/Black-hot/Rainbow/Ironbow etc.)
Lens Type	Fixed, F1.0
Focus Control	Free focus
Focal Length	3.5 mm
Angle of View	H: 48°, V: 36°
Detection Distance for Humans (1.8×0.5m)	146m
Detection Distance for Vehicles (4×1.5m)	447m
Recognition Distance for Human (1.8×0.5m)	36m
Recognition Distance for Vehicle (4×1.5m)	112m
Fire Detection Distance for Object (1m×1m)	146m
Temperature Measurement Distance For Object (1m×1m)	53m
Visible Camera	
Image Sensor	1/2.7" CMOS
Effective Resolution	2880(H)×1620(V)
Shutter Speed	1/5 ~ 1/20,000s
Wide Dynamic Range	True WDR 120dB
Min. Illumination	Color: 0.001Lux @(F1.2, AGC ON) B/W: 0.0003Lux @(F1.2, AGC ON)
S/N Ratio	More than 55dB
Focal Length	4mm
Angle of View	H: 92°, V: 46°
Illuminator	
IR Distance	Up to 35m
White Light	Strobe light
Video and Audio	
Frame Rate	Main Stream: Visible: 2880×1620, 2560×1440, 2304×1296, 1920×1080, 1280×720 @25/30fps Thermal: 704×576 @25/30fps Sub Stream: Visible: D1/VGA/640×360/CIF/QVGA @25/30fps Thermal: CIF @25/30fps
Bit Rate Control	CBR/VBR
Bit Rate	Main Stream: Visible: 100Kbps~16Mbps Thermal: 100Kbps~6Mbps Sub Stream: Visible: 100Kbps~6Mbps Thermal: 10Kbps~6Mbps
Region of Interest	Off/On (8 Zone, Rectangle)

Mirror	Support
Defog	Support
Motion Detection	Support
Privacy Masking	Off/On (5 Areas, Rectangle)
DVE Image Enhance	Support
Audio Compression	G.711,AMR,RAW_PCM (Optional)
Smart Function	
Smart Function	Temperature detection, human, vehicle, fire and smoking detection & alarm,
Fire Detection	Dynamic fire detection, up to 10 fire points detectable.
Detection Preset	Spot:20, Line:2, Area:16
IVS	Perimeter, Virtual Fence, Enter Area, Leave Area
Sound-light Alarm	Support white light flashing and horn warning
Temperature Measurement	3 temperature measurement rule types, 20 rules in total, 1 full screen, 19 others (points, areas, line).
Temperature Alarm	Over temperature alarm
Accuracy	±2°C / ±2%
Response Time	≤ 30ms
Temperature Measurement Range	-40°C ~ 150°C (-40°F ~ 302°F)
Network	
Ethernet	RJ-45 (10/100 Base-T)
Protocols	IPv4/IPv6, HTTP,RTSP, RTP/RTCP, TCP/UDP, DHCP, DNS, PPPoE, SMTP, SIP, 802.1x
Interoperability	ONVIF
Max. User Access	10 Users
Edge Storage	NAS Local PC for instant recording, Micro SD card 128GB
Web Viewer	<le11, Chrome, Firefox, Microsoft Edge
Web Viewer	English, Chinese, Polish, Italian, Portuguese, Spanish, Russian, French, Czech, Hungarian
Interface	
Ethernet	1 Ethernet (10/100 Base-T) R-45 Connector
Audio Interface	1ch Audio In, 1ch Audio Out Built-in Mic and Speaker
Alarm Interface	1ch Alarm In, 1ch Alarm Out
Rs485	Support
HDMI Interface	Support
Reset Button	Support
General	
Power Supply	DC12V/DC24V/PoE (IEEE 802.3af)
Power Consumption	Max 10W
Working Temperature	-40°C ~ 60°C (-40°F ~ 140°F)
Storage Conditions	0~90% RH
Certifications	CE/FCC
Ingress Protection	IP66
Casing	Metal
Dimensions	138 mm × 138 mm × 123 mm (5.43" × 5.43" × 4.84")
Net Weight	1.03 Kg (2.27 lb)



# APC

## All Purpose Core



### Features:

- Compact Size
- Temperature Alarm
- Easy System Integration
- Visual & Thermal Imaging
- ONVIF/SDK/CGI Compatibility
- Intelligent Detection Functions such as motion



## APC Specification

Model	APC
<b>Image Performance</b>	
Detector type	UFPA
Detector resolution	256X192
Thermal Sensitivity (N.E.T.D)	≤0.06°C@30°C
Image Setting	Polarity LUT/ DVE/ Mirror/ FCC/ /3D DNR Brightness/Contrast/ ROI
Colour Palettes	Black-Heat /White-Heat/Rainbow/Iron-Red up to 17 modes
Focus Type	Fixed
Spectral range	8-14um
Field of View (FOV)	96°x75°
<b>Visual/Digital Presentation</b>	
Image Sensor	1/2.8" Sony CMOS
Resolution	1920X1080
Shutter Speed	1/5~1/20,000S
Min Illumination	Colour: 0.1 Lux @ (F1.2,AGC,ON), B/W:0.01Lux
S/N Ratio	More than 55dB
W-LED	1pcs
Focus Type	Fixed
FOV	136.2°x77.3°
<b>Detection</b>	
Intelligent Detection Functions	Motion, Disk alarm ,I/O alarm, temperature alarm
IVS	Perimeter, Single virtual fence, Double virtual fences, Object left, Object removed
Temperature Mode	3 Modes (Spot, Line,, Area)
Temperature Alarm	Over Temperature Alarm, Temperature Difference Alarm
Temperature Range	-40°C~ +150°C
Temperature Accuracy	±2°C or ± 2% of readings
Response Time	≤30ms
<b>Interfaces</b>	
Audio Interface	1ch Alarm input/output
Rj45 Ethernet	Yes
Protocols	IPv4/IPv6,HTTP,RTSP/RTP/RTCP, TCP UDP,DHCP,DNS,PPPOE,SMTP,SIP,802.1x
Interoperability	ONVIF,CGI.SDK
Streaming Method	Unicast
Power input	DC12V±10%
Power Consumption	Max 10W
Max. User Access	10 Users
Edge Storage	Local PC for instant recording , Micro SD Card 128GB
RS232,USB port, BNC Output, Reset Function	Yes
<b>Environmental</b>	
Encapsulation	IP66
Shock/Vibration Resistance	25G/2G
Operating Temperature	-20°C ~ +60°C
Storage Temperature	0~90% RH
<b>Physical Characteristics</b>	
Weight	450g
Dimensions	63x43x92mm