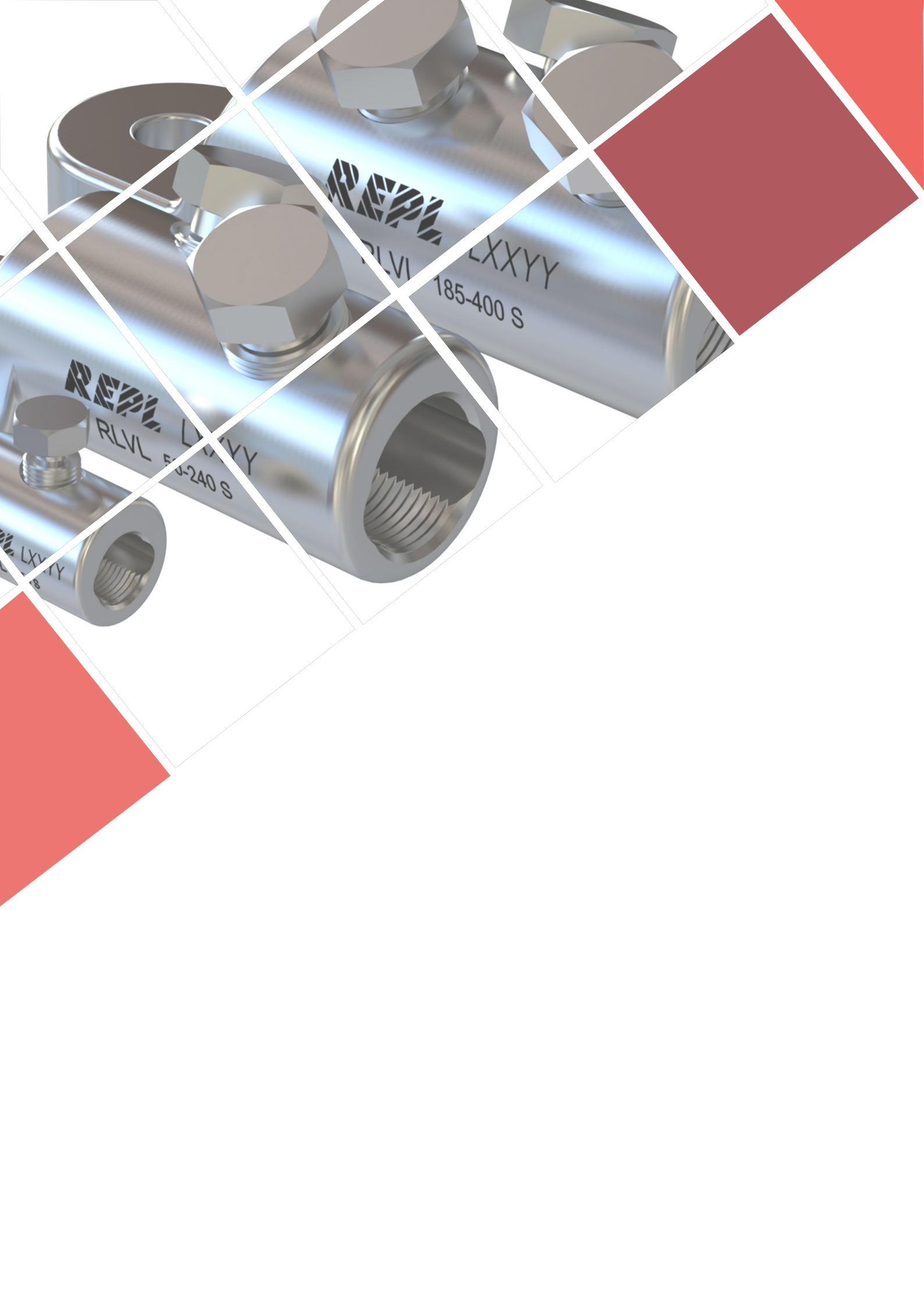


MECHANICAL  
CONNECTORS & LUGS





**REAL**

RLVL LXXYY  
185-400 S

**REAL**

RLVL LXXYY  
185-400 S

**REAL**

LXXYY  
185-400 S

# TABLE OF CONTENTS

## 1. CONNECTORS

Low Voltage Mechanical Connector (RLVC) .....	6
Medium Voltage Mechanical Connector (RMVC) .....	7
Medium Voltage Mechanical Connector for Size Reduction (RMVC-T & RGLL-T).....	8
Medium Voltage Mechanical Connector for Repair Joints (RMVC440) .....	9
Medium Voltage Mechanical Connector - Hexagonal Socket (RMVC-SW8).....	10
Low Voltage Branch Connector (RLVBC2X) .....	11
Special Low Voltage Branch Connector (RLBC) .....	12

## 2. LUGS

Low Voltage Mechanical Lug (RLVL).....	14
Medium Voltage Mechanical Lug (RMVL).....	15
Mechanical 2 Holes Lug (RMVL-2) .....	16
Mechanical Compact Lug (RMVL-N).....	17
Medium Voltage Mechanical Lug - Hexagonal Socket (RMVL-SW8).....	18

<b>3. CONNECTORS AND LUGS WITH WIDE RANGE APPLICATION</b> .....	<b>19</b>
---	-----------

# MECHANICAL CONNECTORS & LUGS

The body of the connectors and lugs and the bolts are made of **tinned aluminum alloy**. The **bolts** are designed with multiple shear points to **shear off at a pre-defined torque**. REPL's Connectors and Lugs are supplied with corrosion inhibiting grease and lubricant for the screws. They are suitable for both copper and aluminium conductors.

For the **Medium Voltage Connectors & Lugs**, the length of screws and the diameter of the main body are designed with the objective to **avoid any sort of protrusion** after the screw is broken. The value of the shear off torque is designed in order to generate the **correct force on the conductor**, either for aluminium or copper conductors, in order to pass the tests required in IEC 61238 standard.

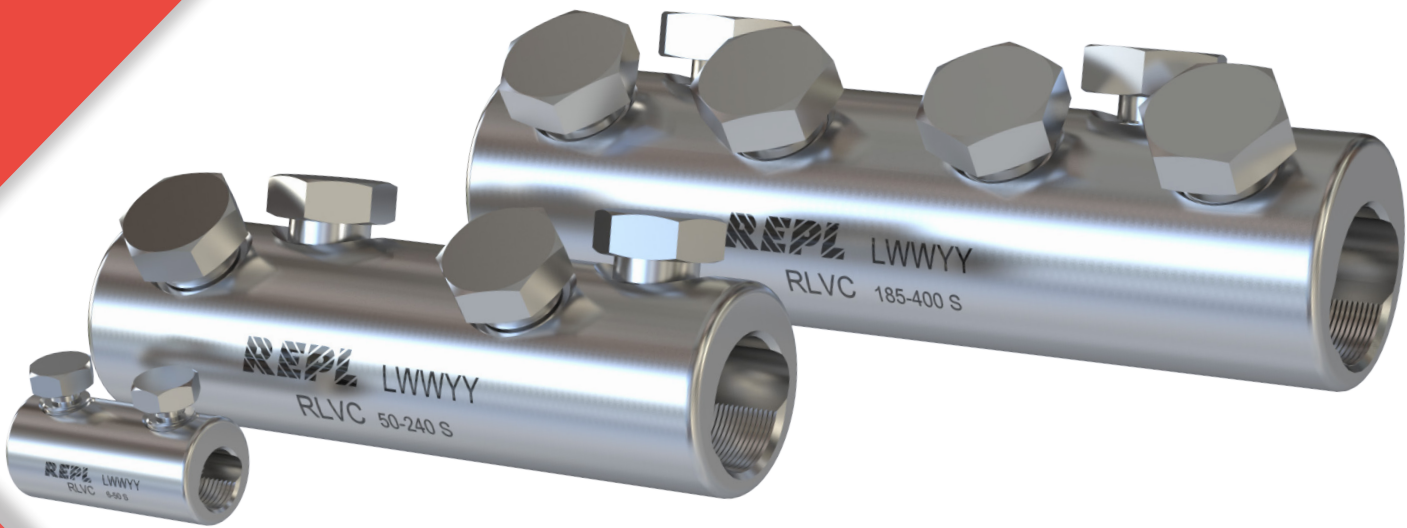


For quick **batch traceability**

REPL Mechanical connectors and lugs, can be applied using a **standard hexagonal tool**. The series medium voltage connectors and lugs **SW8** allows for use of an **allen key tool** for special cases where this is required. Electrical tools can be used with no problem or special precaution. It is anyway important and recommended to follow the installation instructions supplied with the product. Repl Connectors and Lugs are tinned with a **minimum guaranteed thickness** of 15 micron.



**RMVC 70-240 SW8**



# CONNECTORS



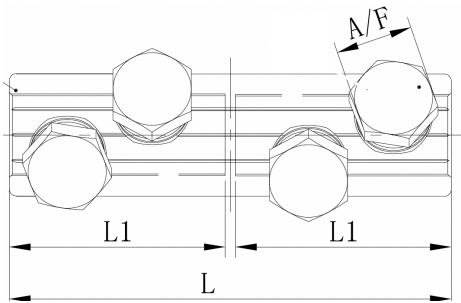
## LOW VOLTAGE MECHANICAL CONNECTOR

RLVC Connectors are available in two version for greater flexibility of use - for **Cylindrical Hole** and **Sectoral Hole** connectors.

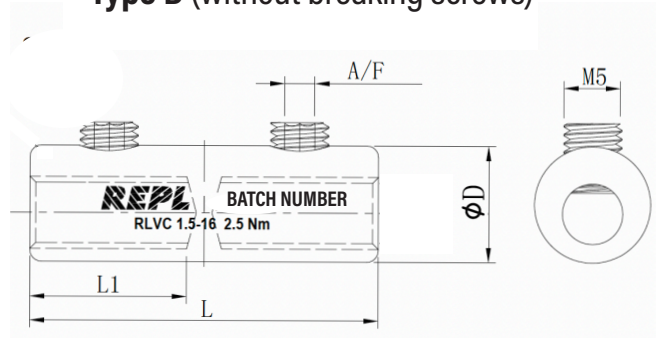


**RLVC 50-240S**

**Type A (with breaking screws)**



**Type B (without breaking screws)**



### CONNECTORS WITH CYLINDRICAL HOLE

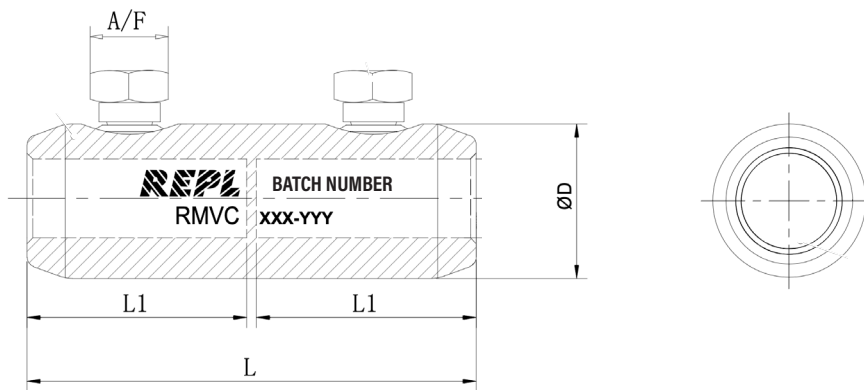
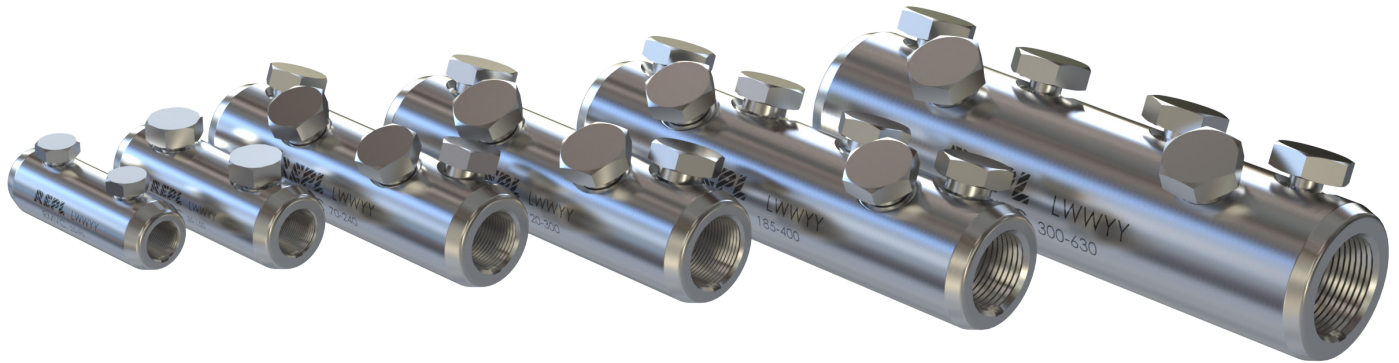
Product	Type	Dimension (mm)				N° of Bolts	Marking
		L	L1	D	A/F		
RLVC01.5.016.C	B	30	13	11	2	2	<b>REPL</b> Batch number RLVC 1,5-16
RLVC006.035.C	A	45	20	16	9	2	<b>REPL</b> Batch number RLVC 6-35
RLVC016.050.C	A	52	24	18	10	2	<b>REPL</b> Batch number RLVC 16-50
RLVC050.095.C	A	62	29	22	13	2	<b>REPL</b> Batch number RLVC 50-95

### CONNECTORS WITH SECTORAL HOLE

Product	Dimension (mm)				N° of Bolts	Marking
	L	L1	D	A/F		
RLVC006.025.S	40	16	16	8	2	<b>REPL</b> Batch number RLVC 6-25S
RLVC006.050.S	37	16	18	10	2	<b>REPL</b> Batch number RLVC 6-50S
RLVC016.095.S	55	24	25	13	2	<b>REPL</b> Batch number RLVC 16-95S
RLVC025.150.S	70	30	28	17	2	<b>REPL</b> Batch number RLVC 25-150S
RLVC050.240.S	120	56	35	19	4	<b>REPL</b> Batch number RLVC 50-240S
RLVC120.300.S	140	68	38	22	4	<b>REPL</b> Batch number RLVC 120-300S
RLVC185.400.S	160	78	42	22	6	<b>REPL</b> Batch number RLVC 185-400S

## MEDIUM VOLTAGE MECHANICAL CONNECTOR

The **RMVC series** is suitable for both **Medium Voltage** and **Low Voltage** applications.

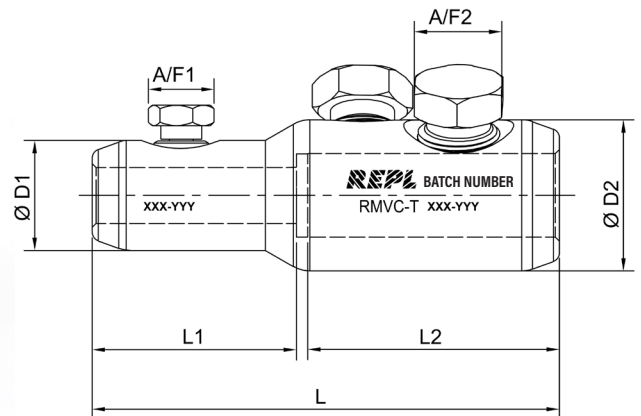


Product	Dimension (mm)				N° of Bolts	Marking
	L	L1	D	A/F		
RMVC025.095	70	33	24	13	2	<b>REPL</b> ® Batch number RMVC 25-95
RMVC035.150	80	38	29	17	2	<b>REPL</b> ® Batch number RMVC 35-150
RMVC035.150.4	106	51	28	17	4	<b>REPL</b> ® Batch number RMVC 035.150.4
RMVC070.240	125	61	35	19	4	<b>REPL</b> ® Batch number RMVC 70-240
RMVC120.300	140	68	38	22	4	<b>REPL</b> ® Batch number RMVC 120-300
RMVC185.400	170	83	42	22	6	<b>REPL</b> ® Batch number RMVC 185-400
RMVC300.630	200	97	52	24	6	<b>REPL</b> ® Batch number RMVC 300-630
RMVC800.1000	220	105	65	22	8	<b>REPL</b> ® Batch number RMVC 800-1000
RMVC1000.1200	220	105	72	22	8	<b>REPL</b> ® Batch number RMVC 1000-1200

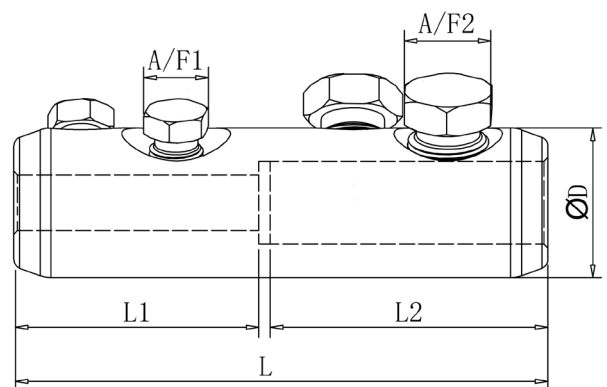
# RMVC-T & RGLL-T

## MEDIUM VOLTAGE MECHANICAL CONNECTOR FOR SIZE REDUCTION

REPL's **Mechanical Connector** for Size Reduction allows the connection of different cross sections cables in a reliable manner. We have the **RMVC-T** series designed for **heat shrink applications** while **RGLL-T** series is optimised for **cold shrink use**.



Product	Dimension (mm)							N° of Bolts	Marking
	L	L1	L2	D1	D2	A/F1	A/F2		
RMVCT070240.025095	103	39	61	25	35	13	19	3	Batch number RMVC-T 70-240/25-95
RMVCT070240.035150	103	39	61	29	35	17	19	3	Batch number RMVC-T 70-240/ 35-150

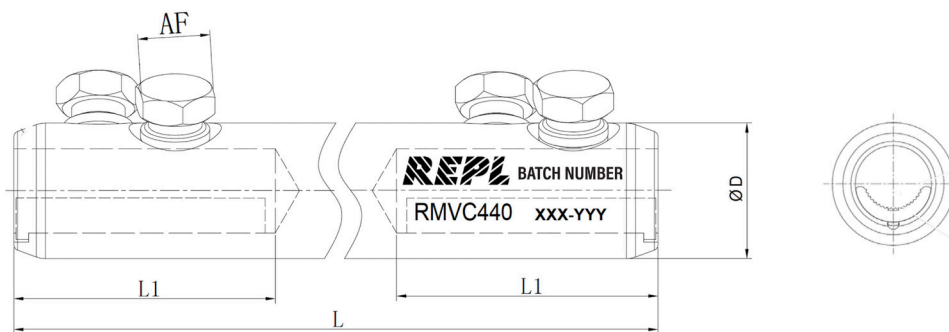
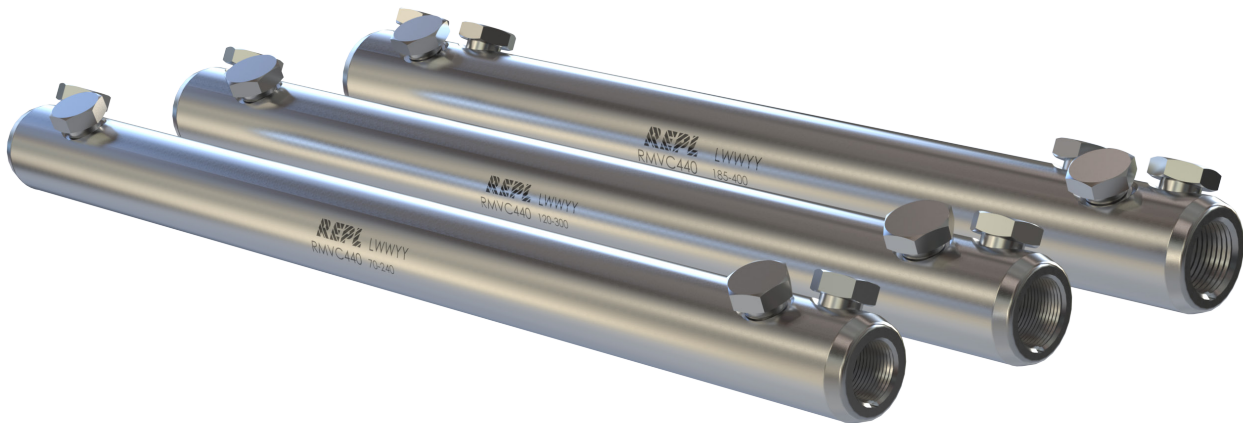


Product	Dimension (mm)						N° of Bolts	Marking
	L	L1	L2	D	A/F1	A/F2		
RGLLT070240.025095	115	51	61	35	13	19	4	Batch number RGLLT 70-240/25-95
RGLLT070240.035150	115	51	61	35	17	19	4	Batch number RGLLT 70-240/ 35-150



## MEDIUM VOLTAGE MECHANICAL CONNECTOR FOR REPAIR JOINTS

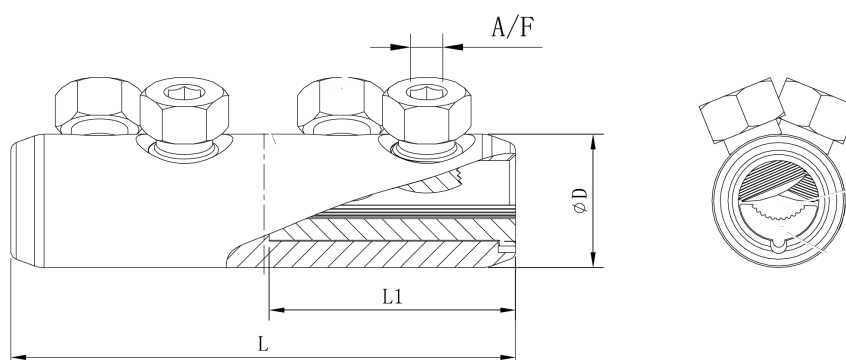
We have designed a special **Mechanical Connectors** to facilitate the quick installation of **repair joints** where the length of 440 mm allows the restoration of a damaged cable section.




Product	Dimension (mm)				N° of Bolts	Marking
	L	L1	D	A/F		
RMVC440.070.240	440	61	35	19	4	<b>REPL</b> <sup>®</sup> Batch number RMVC440 70-240
RMVC440.120.300	440	68	38	22	4	<b>REPL</b> <sup>®</sup> Batch number RMVC440 120-300
RMVC440.185.400	440	83	42	22	6	<b>REPL</b> <sup>®</sup> Batch number RMVC440 185-400

## MEDIUM VOLTAGE MECHANICAL CONNECTOR - HEXAGONAL SOCKET

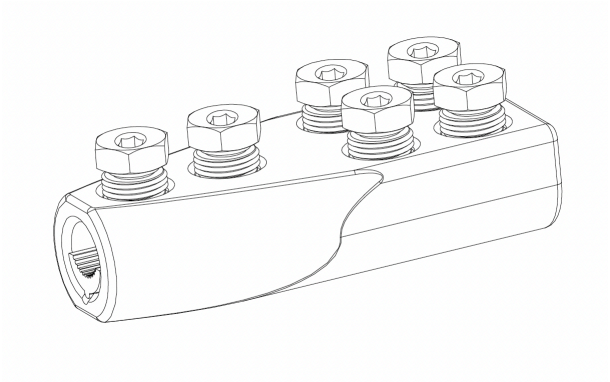
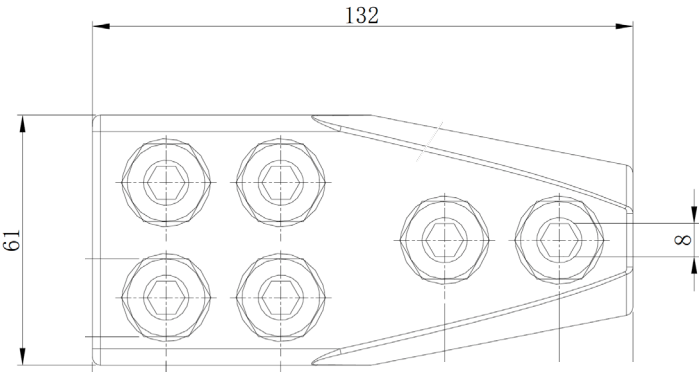
This connector is designed for cases which require an **Allen Key Tool** to be used (8 mm).



Product	Dimension (mm)				N° of Bolts	Marking
	L	L1	D	A/F		
RMVC070.240SW8	125	61	35	8	4	 Batch number RMVC 70-240SW8

## LOW VOLTAGE BRANCH CONNECTOR

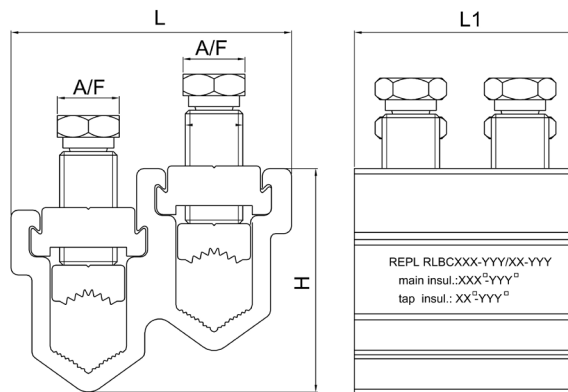
This connector is designed for Low Voltage applications where an **Allen Key Tool** is required (8 mm).



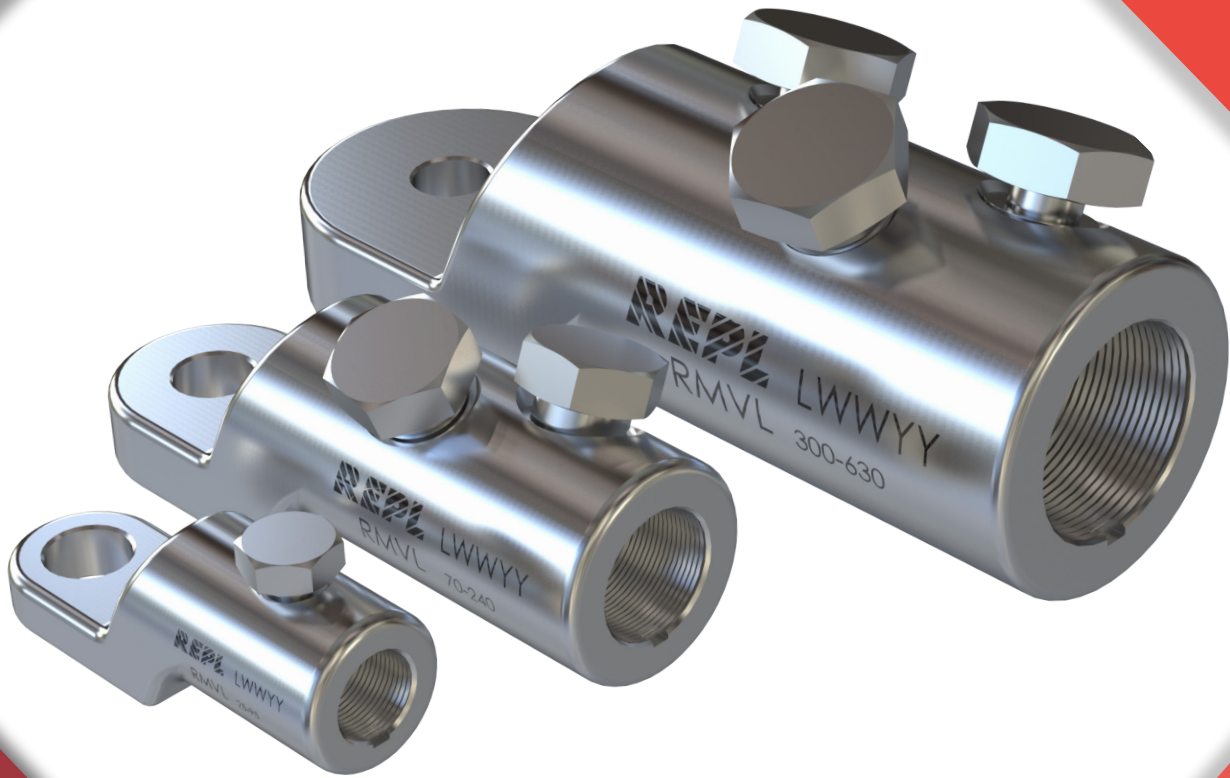
Product	N° of Bolts	Marking
RLVBC2X1.070.240	6	 Batch number RLVBC2X1 70-240

## SPECIAL LOW VOLTAGE BRANCH CONNECTOR

For special Low Voltage applications where the **main conductor is not interrupted**, we have designed a **branch connector**. For other applications where the main conductor is interrupted please contact us for alternative solutions.



Product	Dimension (mm)				N° of Bolts	Marking
	L	L1	H	A/F		
RLBC 6-35_6-35	38	22	29	9	2	<b>REPL</b> <sup>®</sup> Batch number RLBC 6-35/6-35
RLBC 50-120_6-35	50	34	42	9-13	2	<b>REPL</b> <sup>®</sup> Batch number RLBC 50-230/6-35
RLBC 50-120_25-95	57	34	44	13	2	<b>REPL</b> <sup>®</sup> Batch number RLBC 50-120/25-95
RLBC 50-240_6-35	60	40	50	9-17	2	<b>REPL</b> <sup>®</sup> Batch number RLBC 50-240/6-35
RLBC 50-240_25-95	68	40	50	13-17	2	<b>REPL</b> <sup>®</sup> Batch number RLBC 50-240/25-95
RLBC 50-240_50-240	77	61	62	17	4	<b>REPL</b> <sup>®</sup> Batch number RLBC 50-240/50-240
RLBC 240-400_6-35	67	40	57	9-17	2	<b>REPL</b> <sup>®</sup> Batch number RLBC 240-400/6-35
RLBC 240-400_50-240	83	61	64	17	4	<b>REPL</b> <sup>®</sup> Batch number RLBC 240-400/50-240
RLBC 240-400_240-400	88	78	70	17	6	<b>REPL</b> <sup>®</sup> Batch number RLBC 240-400/240-400



**LUGS**



## LOW VOLTAGE MECHANICAL LUG

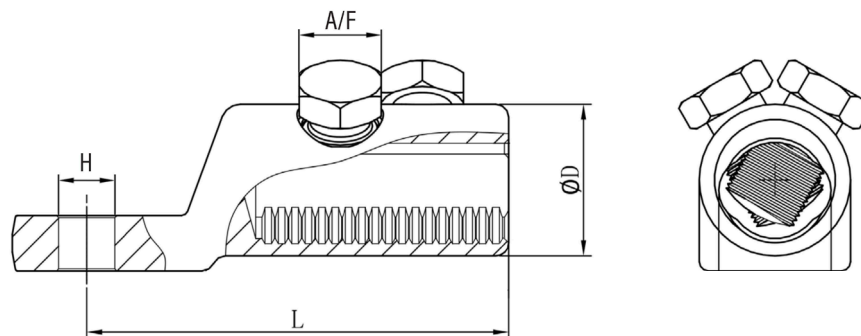
The **RLVL series** is suitable for **Low Voltage** applications. REPL LV Mechanical Lugs are made with a **sectoral hole**.



**RLVL 50-240 S**



**RLVL 185-400 S**

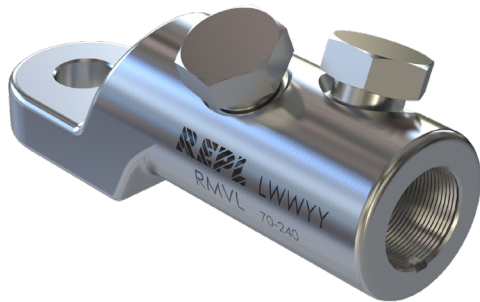


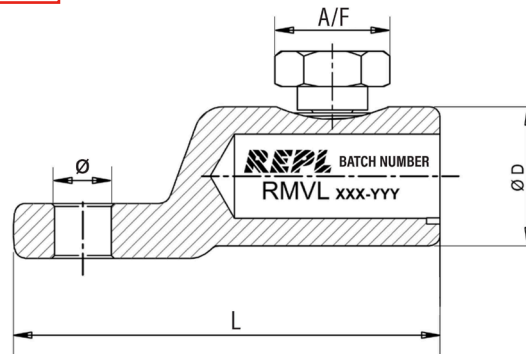
### CYLINDRICAL HOLE

Product	Dimension (mm)				N° of Bolts	Marking	
	L	D	H	A/F			
RLVL006.025.S	41	16	13	8	1	<b>REPL</b>	Batch number RLVL 6-25S
RLVL006.050.S	50	18	13	10	1	<b>REPL</b>	Batch number RLVL 6-50S
RLVL016.095.S	52	25	13	13	1	<b>REPL</b>	Batch number RLVL 16-95S
RLVL050.150.S	71	28	13	17	1	<b>REPL</b>	Batch number RLVL 50-150S
RLVL050.240.S	97	35	13	19	2	<b>REPL</b>	Batch number RLVL 50-240S
RLVL120.300.S	105	38	13	22	2	<b>REPL</b>	Batch number RLVL 120-300S
RLVL185.400.S	119	42	13	22	3	<b>REPL</b>	Batch number RLVL 185-400S

# MEDIUM VOLTAGE MECHANICAL LUG

The **RMVL series** is suitable for both **Medium Voltage** and **Low Voltage** applications.

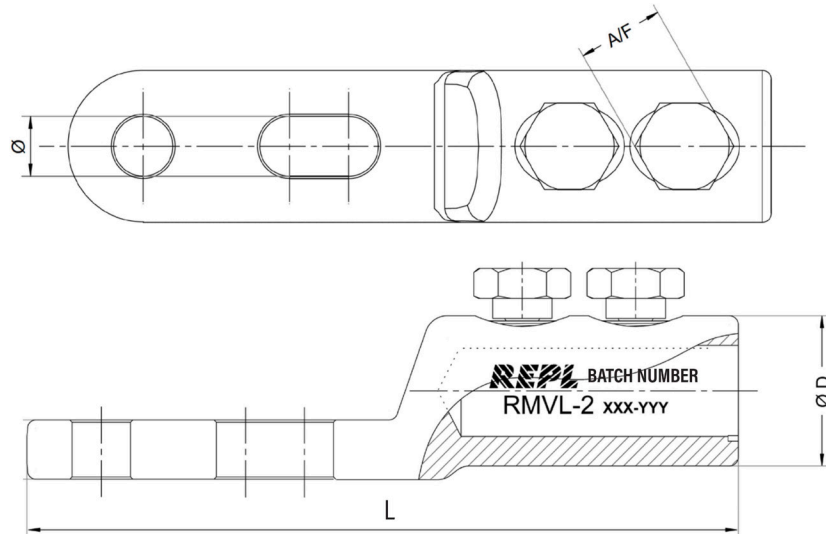

**RMVL 70-240**

**RMVL 300-630**


Product	Dimension (mm)				N° of Bolts	Marking
	L	D	Ø	A/F		
RMVL025.095	76	24	13	13	1	<b>REPL</b> Batch number RMVL 25-95
RMVL025.095F16			17			<b>REPL</b> Batch number RMVL 25-95F16
RMVL035.150	86	29	13	17	1	<b>REPL</b> Batch number RMVL 35-150
RMVL035.150F16			17			<b>REPL</b> Batch number RMVL 35-150F16
RMVL035.150.2	85	28	13	17	2	<b>REPL</b> Batch number RMVL 35-150.2
RMVL035.150.2F16			17			<b>REPL</b> Batch number RMVL 35-150.2F16
RMVL070.240	114	35	13	19	2	<b>REPL</b> Batch number RMVL 70-240
RMVL070.240F16			17			<b>REPL</b> Batch number RMVL 70-240F16
RMVL120.300	125	38	13	22	2	<b>REPL</b> Batch number RMVL 120-300
RMVL120.300F16			17			<b>REPL</b> Batch number RMVL 120-300F16
RMVL185.400	141	42	13	22	3	<b>REPL</b> Batch number RMVL 185-400
RMVL185.400F16			17			<b>REPL</b> Batch number RMVL 185-400F16
RMVL300.630	165	52	13	24	3	<b>REPL</b> Batch number RMVL 300-630
RMVL300.630F16			17			<b>REPL</b> Batch number RMVL 300-630F16
RMVL300.630F20			21			<b>REPL</b> Batch number RMVL 300-630F20
RMVL800.1000F20	197	65	21	22	4	<b>REPL</b> Batch number RMVL 800-1000F20
RMVL1000.1200F20	170	72	21	22	4	<b>REPL</b> Batch number RMVL 1000-1200F20

## MECHANICAL 2 HOLES LUG

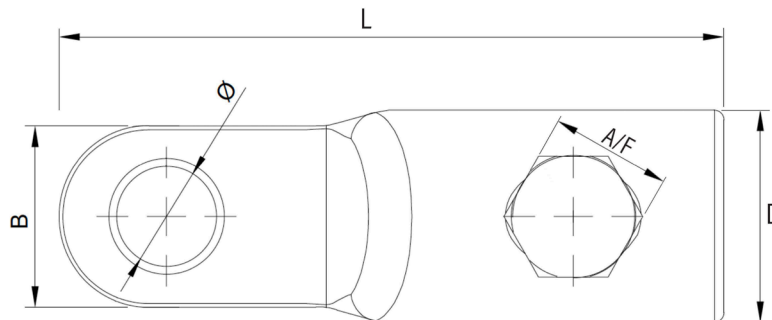
For Medium and Low Voltage special applications where **two holes** are required, we have designed the **RMVL-2 Lug Series** with an **elongated lower hole** for added flexibility.




Product	Dimension (mm)				N° of Bolts	Marking	
	L	D	Ø	A/F			
RMVL2.025.95	126	24	13	13	2	<b>REPL</b>	Batch number RMVL-2 25-95
RMVL2.035.150	141	29	13	17	2	<b>REPL</b>	Batch number RMVL-2 35-150
RMVL2.070.240	154	35	13	19	2	<b>REPL</b>	Batch number RMVL-2 70-240
RMVL2.185.400	186	42	13	22	3	<b>REPL</b>	Batch number RMVL-2 185-400
RMVL2.185.400F16	186	42	17	22	3	<b>REPL</b>	Batch number RMVL-2 185-400F16
RMVL2.300.630	205	52	13	24	3	<b>REPL</b>	Batch number RMVL-2 300-630
RMVL2.300.630F16	205	52	17	24	3	<b>REPL</b>	Batch number RMVL-2 300-630F16

## MECHANICAL COMPACT LUG

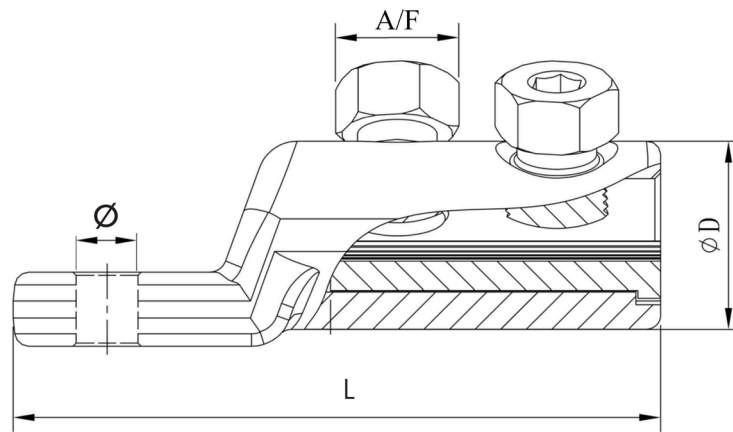
For Low Voltage special applications where the dimension B (refer to below drawing) must be lower than 23 mm, we have designed the **RMVL-N Lug Series**.





Product	Dimension (mm)					N° of Bolts	Marking
	L	D	Ø	A/F	B		
RMVLN.150	86	27	10	17	23	1	 Batch number RMVL-N 150

## MEDIUM VOLTAGE MECHANICAL LUG - HEXAGONAL SOCKET

For cases where the Medium Voltage Lug requires an **Allen Key Tool** (8mm) to be used, we have designed the **RMVL SW8 Series**.



Product	Dimension (mm)				N° of Bolts	Marking
	L	D	Ø	A/F		
RMVL070.240SW8	114	35	13	8	2	 Batch number RMVL70-240SW8
RMVL070.240F16SW8			17			 Batch number RMVL70-240F16SW8



# CONNECTORS & LUGS WITH WIDE APPLICATION RANGE

REPL created a series of **wide range connectors and lugs** by adding a **special device** to the standard **RMVC 35/150** and **RMVC 70/240** connectors.



Product	Dimension (mm)			N° of Bolts	Marking	
	L	D	A/F			
RMVC025.150	80	29	17	2	<b>REPL</b>	Batch number RMVC 25/150
RMVC025.240	125	35	19	4	<b>REPL</b>	Batch number RMVC 25/240
RMVC-T025240.025095	103	25/35	13/19	3	<b>REPL</b>	Batch number RMVC-T 25/240-25/95
RMVC-T025240.025150	103	29/35	17/19	3	<b>REPL</b>	Batch number RMVC-T 25/240-25/150
RGLL-T025240.025095	115	35	13/19	4	<b>REPL</b>	Batch number RGLL-T 25/240-25/95
RGLL-T025240.025150	115	35	17/19	4	<b>REPL</b>	Batch number RGLL-T 25/240-25/150
RMVC440025.240	440	35	19	4	<b>REPL</b>	Batch number RMVC400 25/240
RMVL025.150	86	29	17	1	<b>REPL</b>	Batch number RMVL 25/150
RMVL025.150F16	86	29	17	1	<b>REPL</b>	Batch number RMVL 25/150 F16
RMVL025.240	114	35	19	2	<b>REPL</b>	Batch number RMVL 25/240
RMVL025.240F16	114	35	19	2	<b>REPL</b>	Batch number RMVL 25/240 F16

# REPL



[info@repl.com](mailto:info@repl.com)



[www.repl.com](http://www.repl.com)



[@replint](https://twitter.com/replint)



[@replsocial](https://www.instagram.com/replsocial)



REPL International Ltd