

Tools to keep your LV network  
operating efficiently

# VisNet<sup>®</sup> Business Brochure



**VisNet**<sup>®</sup>  
From EA Technology

PUBLIC

# Pioneering technology for LV networks

VisNet® from EA Technology is leading the charge with transformative technology and powerful insights to propel the evolution of our energy infrastructure.

Exclusively focused on developing Low Voltage network management solutions that support the world's transition to decarbonisation, we are proud to offer some of the most advanced and reliable LV grid modelling and monitoring tools available.

Our experts are constantly innovating to ensure that VisNet tools not only meet your evolving needs, but also offer the flexibility to handle any challenges that you may face in the future.

Whatever tomorrow's grid may bring, we can help you prepare today.





VisNet<sup>®</sup>  
Modelling

A large, faint, semi-transparent version of the VisNet logo is positioned in the bottom right corner of the page, serving as a background element.

# Introducing VisNet® Modelling

We develop software tools to accelerate network assessments and connections, smoothing the road to net zero. Our VisNet® Connect and VisNet® ConnectLite products improve workflows and provide customers with instant connection estimates and quotes. Our VisNet® Design tool simplifies design and modelling of new and existing LV networks.

Our VisNet® Modelling tools serve over 16 million homes and businesses across 365,000 substations.



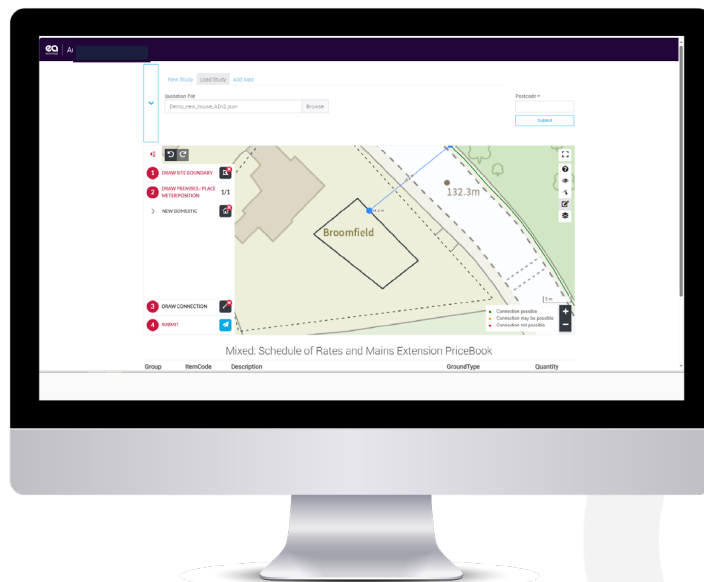
# VisNet<sup>®</sup> Connect

## Comprehensive connections workflow optimisation and self-service tool.

VisNet<sup>®</sup> Connect gives network operators and utilities the confidence to allow customers to self-serve acceptable quotes, with optional checks if required. It has internal tools for staff to check and edit quotes and generate construction plans following a streamlined workflow that integrates with your systems.

### Benefits:

- Network capacity assessment
- Red / amber / green (RAG) network capacity visibility for customers and staff
- Map canvas background
- Automatic cable routing and manual connection drawing tools
- User-friendly edit and quotation plan tools for internal users to access and modify customer drawn designs
- Post-connection network studies considering multiple parameters (thermal, voltage, impedance, etc)
- Bill of materials (BoM) generation
- Customer Relationship Management (CRM) system integration
- Step by step customer guidance
- Customer connection type interview (optional)



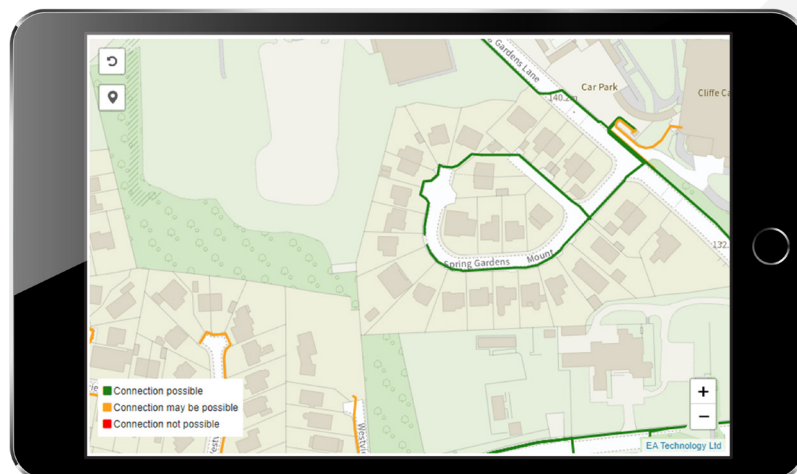
# VisNet® ConnectLite

A personalised connection estimation tool.

VisNet® ConnectLite has been successfully operating for over four years and is a perfect first step into customer connection self-service. It considers your unique requirements, location, and available network capacity to provide a tailored price estimate for your connection.

## VisNet® ConnectLite includes standard benefits for LV connection design such as:

- Connection cost budget estimator
- Network capacity assessment
- Red / amber / green (RAG) network capacity visibility
- Map canvas background
- Manual connection drawing tools
- Bill of materials (BoM) generation
- Step by step customer guidance
- Customer connection type interview (optional)



# VisNet<sup>®</sup> Design

## Designing low voltage networks for a better future.

VisNet<sup>®</sup> Design is used by over 550 planners across 19 companies for Low Voltage (LV) network planning, design and assessment studies.

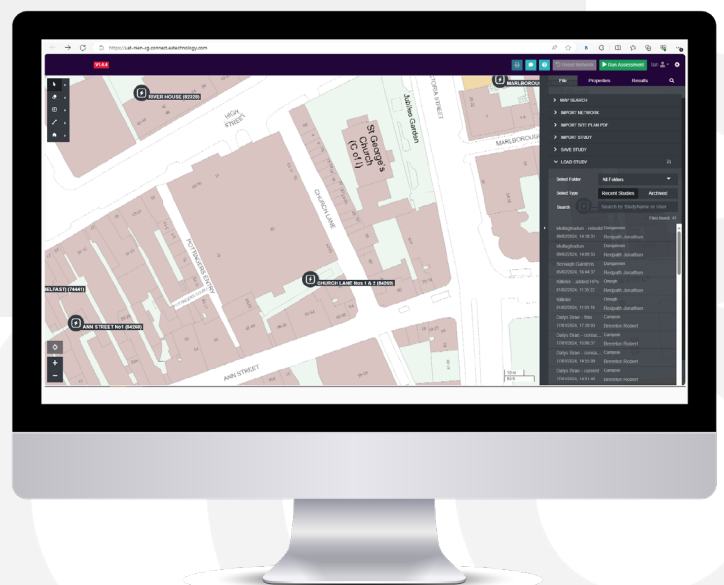
VisNet<sup>®</sup> Design streamlines LV network design by presenting industry-standard calculations through an intuitive user-friendly interface. It enables the rapid creation and assessment of network designs, reducing the time taken from connection request to fully compliant and costed design. In response to the growing impact of low carbon technologies, the tool aids network designers in promptly evaluating existing networks and new connections, ensuring safe and cost-effective adaptations.

VisNet<sup>®</sup> Design is an essential tool for electrical network operators, connection providers, contractors, and design consultants.

Launched in 2022 it builds on decades of experience, replacing the UK industry standard WinDEBUT tool after over 30 years of service.

### Benefits:

- Easy to use web application with minimal training requirements
- Centralised file management to access saved models
- Network schematic and assessment results shown overlaid on a map view
- Combine any mix of customers including generation at a or distributed along a cable
- Easily model existing DNO network as single line and load
- Enterprise version available with GIS data integration
- Rapid assessment of complex networks
- Cost effective with clear, simple pricing model
- Easy deployment with automatic updates
- Upload site plans to use a study background





# VisNet®

Monitoring





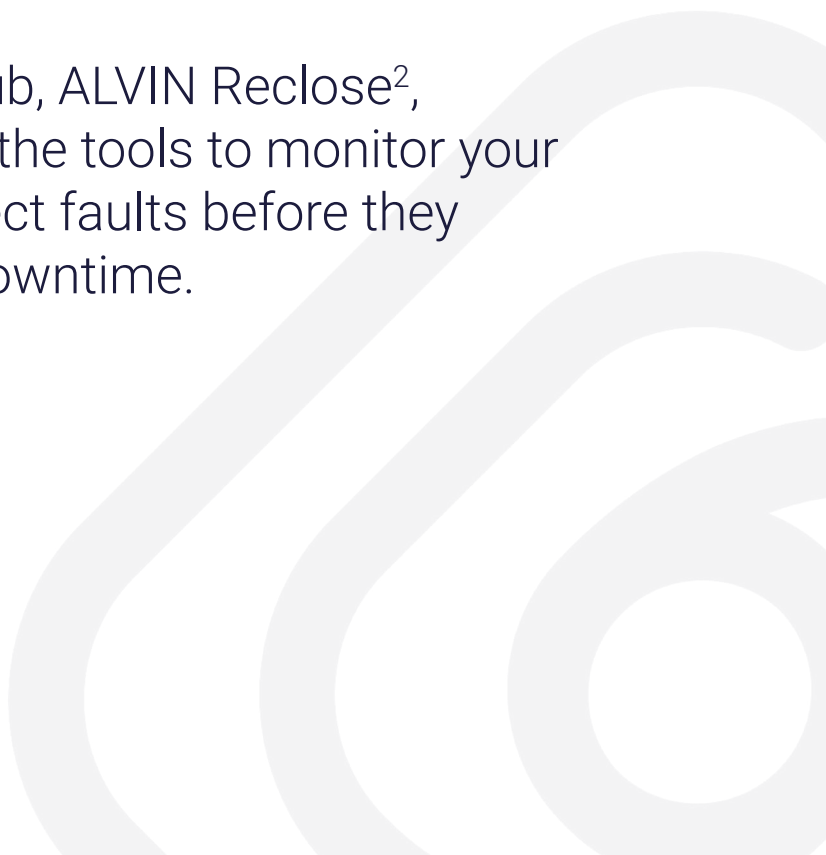
---

# VisNet<sup>®</sup> Monitoring, anticipating tomorrow's grid

Consumer and Business demand for electricity is growing exponentially during the 21st century, massively increasing the need for reliable electricity supplies. With our innovative solutions we promote sustainability, supporting the global aim to achieve NetZero within 25 years.

Despite there being over 28 million LV substations worldwide, less than 1% of these are intelligent. VisNet<sup>®</sup> real-time grid monitoring digitises LV networks, increasing visibility for network operators promoting the development of resilient, accessible, low-cost energy networks.

Introducing our VisNet<sup>®</sup> Hub, ALVIN Reclose<sup>2</sup>, VisNet<sup>®</sup> Detect: giving you the tools to monitor your Low Voltage systems, detect faults before they happen and reduce your downtime.



# Monitoring Solutions

## VisNet® Hub: Works to open your network

Our innovative real-time LV monitoring system offers unrivalled network transparency to facilitate proactive network and fault management strategies. Transforming data into powerful actionable insights with smart software solution compatibility and enabling reactivity to faults with location precision and proactively informing future planning requirements

### The VisNet® Hub is:

- An LV Monitoring device with advanced on-device functionalities
- Installed in MV/LV substations and monitors up to 6 LV feeders
- Able to run multiple algorithms (Apps) on-device to provide valuable data insights
- Secured and Encrypted LV-CAP OS environment with OTA software updates
- A low cost RTU with multiple plug-in options for additional devices and sensors



## VisNet® Guard: Detects faults before they happen

An advanced LV monitor that uses a minimal number of sensors to detect faults early and supports a proactive approach to network and fault management, allowing you to pinpoint the exact feeder way and phase(s) that are the source of the activity. Take the steps necessary to prevent failures before they can happen, minimise downtime and save you money.

### VisNet® Guard Features:

- Real Time monitoring
- Monitors & measures up to 8 LV Currents
- Self Powered
- Suitable for live installation
- 4G Communication
- User Interface via Web Application



# Restoration Solutions

## ALVIN Reclose<sup>2</sup>: Smarter fault management and reliable power restoration

By restoring power to Low Voltage networks, ALVIN Reclose<sup>2</sup> solves the problem of intermittent faults caused by unreliable supply in multiple fuse operations. Decrease cost and inefficiency from substation visits with ALVIN Reclose<sup>2</sup> and resolve faults on the first attempt.

### ALVIN Reclose<sup>2</sup> Features:

- Replacement for a LV network fuse
- Automatic multi-shot trip and close capabilities to manage transient faults and overloads
- Back up fuse protected
- Restores supplies after a transient fault with no need for manual intervention



# Software Solutions

## VisNet<sup>®</sup> Detect: Turn data into actionable insights

Comprehensive data is crucial to the efficient operation of a network. VisNet<sup>®</sup> Detect empowers complete control over your network, presenting data in a way that is easy to understand, meaningful and actionable. The user interface provides effective visualisation of network issues, presenting data and details for you to analyse a successful response.



Contact us today to schedule a demo and take the first step towards revolutionising your low voltage network:

**[sales@eatechnology.com](mailto:sales@eatechnology.com) / Tel: +44 (0) 151 339 4181**

---



**VisNet<sup>®</sup>**  
From EA Technology

EA Technology Limited  
Capenhurst Technology Park  
Capenhurst, Chester CH1 6ES

t +44 (0) 151 339 4181  
e [sales@eatechnology.com](mailto:sales@eatechnology.com)  
**[www.eatechnology.com](http://www.eatechnology.com)**  
PUBLIC  
V1UK 11.3.24