

- 01 Clearly State the Purpose and Mission of Your Business
- 02 Set Specific Goals
- 03 Keep a Passionate Desire in Your Heart
- 04 Strive Harder than Anyone Else
- 05 Maximize Revenues and Minimize Expenses
- 06 Pricing Is Management
- 07 Success Is Determined by Willpower
- 08 Possess a Fighting Spirit
- 09 Face Every Challenge with Courage
- 10 Always Be Creative in Your Work
- 11 Be Kind and Sincere
- 12 Always Be Cheerful and Positive.



Hold Great Dreams and Hopes in the Pureness of Your Heart

YUHUAN OLAIN ELECTRIC CO., LTD

Add: ganjiang Industrial Zone, Yuhuan City, Zhejiang Province
Tel: 0576-87457097 Fax: 0576-87452880
E-mail: olain@cnolain.com
Web: www.olain.cn



MORE CONCERTED EFFORTS BETTER OLAIN

SINCE 2005
HV EHV Transmission &
Distribution Manufacturer

YUHUAN OLAIN ELECTRIC CO., LTD



BRIEF INTRODUCTION

Yuhuan Olain Electric Co., Ltd. (formerly Yuhuan Jikai Electric Machinery Factory) was established in September 2005. We are specialized in various types of conductors for medium voltage and ultra-high voltage. Our main products are cable accessories, copper and aluminum terminals, and nuclear power hardware. Conductors of various schemes for top expansion, various upper and lower isolation contacts and isolation knife contacts of ring network cabinets, conductors of vacuum circuit breakers on columns, various types of soft connections, insulator inserts guides, high-voltage pass-through aluminum conductors and other products. We have high attainments in the manufacture of non-ferrous metal special-shaped parts, and has accumulated a certain reputation in this field. Our company continues to pursue progress, improve capabilities, and continuously improve and make breakthroughs in technology.

Yuhuan Olain Electric Co., Ltd. has gone through three stages of development in the process of development.

1. Entrepreneurship period: We motivated ourselves, set goal first, and strove to practice our original intention, struggled and cultivated .
2. Development period: We experienced the SARS epidemic in 2003-2006 and the 2008 financial crisis. But everything was a good arrangement. We thrived and were gradually recognized by the industry and made many friends and business partner domestic and overseas .Due to the development needs in 2009 the company changed its name to " Yuhuan Olain Electric Co., Ltd."
3. Growth period: We have experienced the second factory relocation, and the output value has exceeded 100 million yuan. In this field, we continue to break through the technology to improve the level of our company in many aspect . We introduced informatization and digital operation, and encourage operators and employees continue to learn and improve themselves , these led us make extraordinary progress.

The company's future mission, vision, values, internally are to create conditions for the material and spiritual happiness of all employees and agree with them together, externally the company is a platform. Our slogan is "More concerted efforts, better Olain." Achieving a win-win situation, in the future, we will follow this direction and contribute to our industry with the strength of Olain.

- 01 Put in as much effort as anyone
- 02 Be humble, not proud
- 03 Reflect every day
- 04 Be thankful to live
- 05 Good deeds, think altruistic
- 06 Don't have emotional worries

SIX IMPROVEMENTS

Pay for nothing, but also really grateful, happiness comes naturally

VALUES

Love, struggle, professional innovation, gratitude altruism, modest introspection.

VISION

Happiness enterprise, the messenger of light, the industry leader.

MISSION

While pursuing the material and spiritual happiness of all employees, the company is committed to making the power grid operate more safely, spreading light with love and lighting up the starry sky of the world.



Olain 欧莱诺®

WHAT IS RIGHT TO BE HUMAN

Soul standard: don't give others trouble, let a person at ease, at ease.

**THE RESULT OF LIFE AND
WORK = WAY OF THINKING × PASSION × ABILITY**

TESTING EQUIPMENT



Helium leak detector



Electronic universal tensile testing machine



Rockwell hardness tester



Shape and position image projector



Salt atomizer tester



Temperature rise tester



Eddy current conductivity measuring instrument

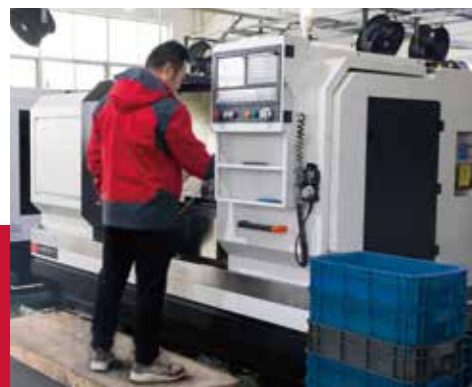


Spectral coating thickness gauge

OLAIN WORKSHOP



CNC center workshop



Turning-milling compound CNC machine workshop



Robot automatic lathe workshop



CNC lathe workshop

ENTERPRISE HONOR



Top 10 Enterprises in Ganjiang Town in 2020



New billion Enterprises in Ganjiang Town in 2020



Potential leading enterprises in Yuhuan 2019



Potential leading enterprises in Yuhuan 2020



Gazelle enterprise in Taizhou in 2018



Member of CEEIA

CERTIFICATION



ISO45001:2018
Issue Date: Jun 14,2022

ISO9001:2015
Issue Date: Jun 14,2022

ISO14001:2015
Issue Date: Jun 14,2022

CONTENTS

目录

A	Ultra-high voltage conductor series	11-14
B	Terminal series	15-18
C	Cable accessories metallic conductor series	19-20
D	Soft connector series	21-22
E	Ring main unit contact type conductor series	23-26
F	Post vacuum circuit breaker Conductor series	27-30
G	Inner cone conductor series	31-34
H	Solid insulated up-down outlet series	35-38
I	APG forming metal guide insert series	39-42
J	Contact arm series	43-44
K	Static contact series	45-46
L	Tulip contact series	47-48
M	Isolated blade series	49-50
N	Custom copper and aluminum shaped parts series	51-54
O	Seal flange series	55-56
P	Load switches series	57
Q	Movable fit series	58



ULTRA-HIGH VOLTAGE CONDUCTOR SERIES



OLN-A001

Name: 110KV Support
Material: Cast aluminum



OLN-A002

Name: 220KV Support
Material: Brass



OLN-A003

Name: 110KV Support
Material: Aluminum



OLN-A004

Name: Contact seat 110KV
Material: Copper



OLN-A005

Name: HV Contact seat 110KV
Material: Copper



OLN-A006

Name: HV Contact seat 220KV
Material: Copper



OLN-A007

Name: Terminal clip
Material: Copper



OLN-A008

Name: Terminal clip
Material: Copper



OLN-A013

Name: Outdoor cone bowl
& cone holder backing plate
Material: Aluminum



OLN-A014

Name: Outdoor cone bowl
& cone holder backing plate
Material: Brass



OLN-A009

Name: Equipment clip
Material: Copper



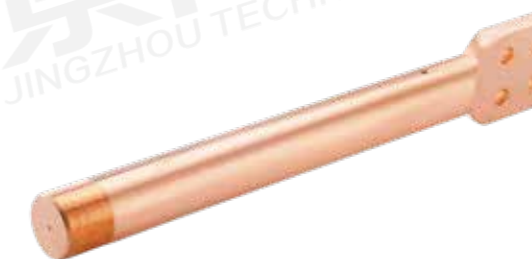
OLN-A010

Name: Oil plug terminal
Material: Copper



OLN-A015

Name: Pressure equalizing sleeve 110KV
Material: Brass



OLN-A016

Name: Outlet core rod
Material: Copper



OLN-A011

Name: 3# Outlet fittings (middle)
Material: Copper



OLN-A012

Name: 3# Outlet fittings (side)
Material: Copper



OLN-A017

Name: Terminal post
Material: Copper



OLN-A018

Name: GIS terminal lower tailpipe 110KV
Material: Copper & Brass



TERMINAL SERIES



OLN-B001

Name: Terminals

Material: Copper

Serial number	Cable cross section mm ²	Total length(L) mm	Board width mm	Plate thickness mm	Inner hole mm	Outside diameter mm	Inner hole depth (L1) mm
1	25	100.5	30	10	7	11	50
2	35	100.5	30	10	8.5	13	50
3	50	100.5	30	10	9.6	14	50
4	70	100.5	30	10	12	16	50
5	95	100.5	30	10	13	18	50
6	120	100.5	30	10	15	20	50
7	150	100.5	30	10	16	22	50
8	185	100.5	30	10	18	25	50
9	240	100.5	30	10	20	27	50
10	300	100.5	30	10	23	30	50
11	400	100.5	30	10	26	34	50
12	500	100.5	30	10	29	38	50



OLN-B002

Name: Terminals
Material: (Copper + Aluminum)

Serial number	Cable cross section mm ²	Total length(L) mm	Board width mm	Plate thickness mm	Linner hole mm	Outside diameter mm	Linner hole depth (L1) mm
1	25	107.5	35	13	Φ6.6	Φ16	42
2	35	107.5	35	13	Φ8	Φ16	42
3	50	107.5	35	13	Φ9.8	Φ16	42
4	70	117.5	35	13	Φ11.2	Φ18.5	52
5	95	121.5	35	13	Φ13.2	Φ22	56
6	120	121.5	35	13	Φ14.7	Φ23	56
7	150	125.5	35	13	Φ16.3	Φ25	60
8	185	125.5	35	13	Φ18.3	Φ28.5	60
9	240	135.5	35	13	Φ21	Φ32	70
10	300	135.5	35	13	Φ23.42	Φ34	70
11	400	138.5	35	13	Φ26	Φ38.5	73
12	500	144.5	35	13	Φ29	Φ44	79
13	630	160.5	35	13	Φ33.6	Φ46.75	95



OLN-B003

Name: Terminals
Material: (Copper + Aluminum)

Serial number	Cable cross section mm ²	Total length(L) mm	Plate face(Φ) mm	Outside diameter(D) mm	Linner hole(d) mm	Linner hole depth (L1) mm
1	16mm	90	8.5	16	5.5	45
2	25mm	90	8.5	16	6.5	45
3	35mm	90	8.5	16	8.5	45
4	50mm	90	12.8	20	9	45
5	70mm	90	12.8	20	11	45
6	95mm	90	12.8	20	12.5	45
7	120mm	115	12.8	25	13.7	60
8	150mm	115	12.8	25	15.5	60
9	185mm	120	12.8	32	17	65
10	240mm	120	12.8	32	19.5	65
11	300mm	130	12.8	34	22.5	70
12	400mm	145	12.8	41	26.5	80
13	500mm	200	方头	47	29.5	93
14	630mm	200	方头	47	34	93



CABLE ACCESSORIES METALLIC CONDUCTOR SERIES



OLN-C001

Name: Standard side bracket
Material: Copper



OLN-C002

Name: 2500A Side connector
Material: Copper



OLN-C003

Name: Side connector 630A 10KV
Material: Aluminum+Copper



OLN-C004

Name: Side busbar connector
630A 10KV
Material: Copper



OLN-C005

Name: Side busbar connector 1250A 10KV
Material: Copper



OLN-C006

Name: Busbar connector (cconductor)
Material: Copper

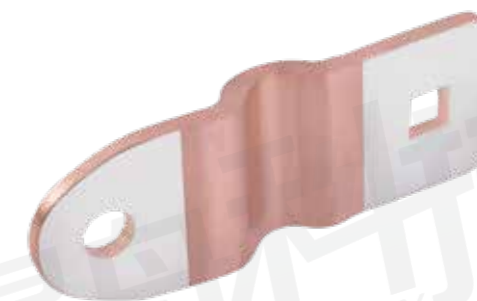


SOFT CONNECTOR SERIES



OLN-D001

Name: Soft connector
Material: Copper



OLN-D002

Name: Soft connector
Material: Copper



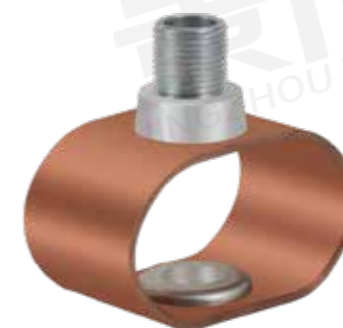
OLN-D003

Name: Soft connector
Material: Copper



OLN-D004

Name: Circuit breaker soft connector
Material: Copper



OLN-D005

Name: Soft connector
Material: Copper

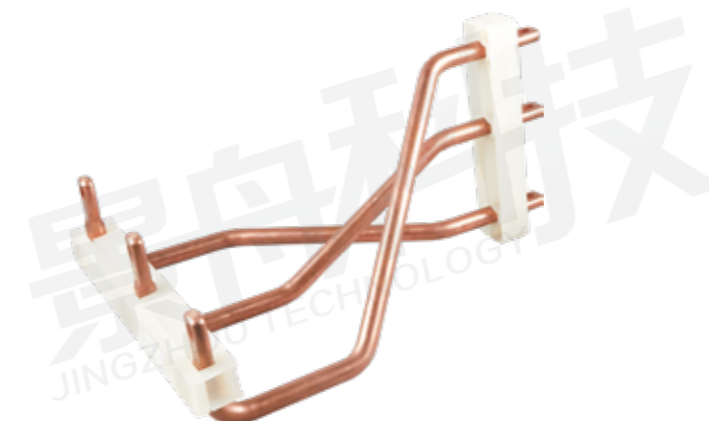


OLN-D006

Name: Busbar soft connector
Material: Copper

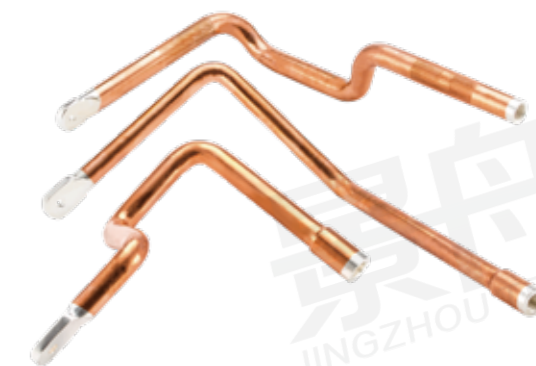


RING MAIN UNIT CONTACT TYPE CONDUCTOR SERIES



OLN-E001

Name: ABC three-phase busbar
Material: Copper



OLN-E002

Name: ABC three-phase busbar
Material: Copper



OLN-E003

Name: ABC three-phase busbar
Material: Copper



OLN-E004

Name: ABC three-phase busbar
Material: Copper



OLN-E005

Name: ABC three-phase busbar
Material: Copper



OLN-E006

Name: ABC three-phase busbar
Material: Copper



OLN-E007

Name: Isolated static contacts
Material: Copper



OLN-E008

Name: Down outlet
Material: Copper



OLN-E013

Name: Circuit breaker switch contacts
Material: Copper



OLN-E014

Name: Earthing contacts
Material: Copper



OLN-E009

Name: Isolated static contacts
Material: Copper



OLN-E010

Name: UP outlet
Material: Copper



OLN-E015

Name: Circuit breaker switch contacts
Material: Copper



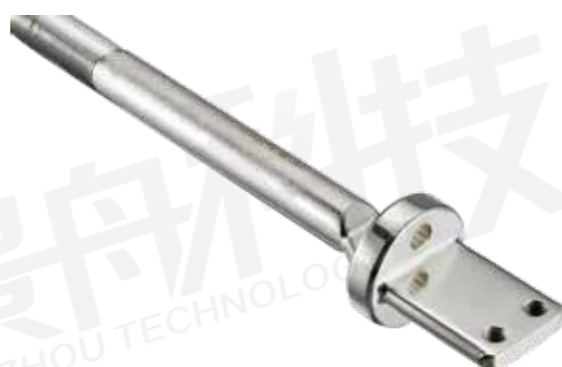
OLN-E016

Name: Earthing contacts M8-M12
Material: Copper



OLN-E011

Name: Earthing static contact
Material: Copper



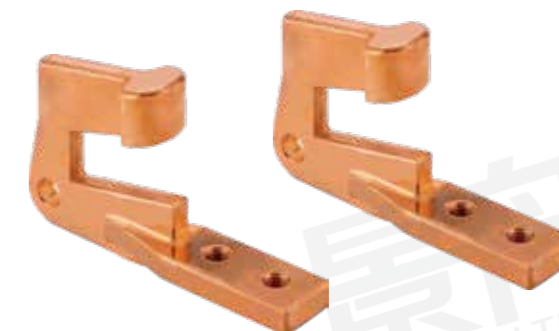
OLN-E012

Name: Outlet conductive pole
Material: Copper



OLN-E017

Name: Circuit breaker contacts
Material: Copper



OLN-E018

Name: Earthing contacts
Material: Copper



POST VACUUM CIRCUIT BREAKER CONDUCTOR SERIES



OLN-F001

Name: Outlet conductive rod ZW20-12
Material: Copper



OLN-F002

Name: Isolated knife block ZW20
Material: Copper



OLN-F003

Name: Conductive rod ZW20
Material: Copper



OLN-F004

Name: Isolated knife block ZW20
Material: Copper



OLN-F005

Name: Outlet conductive rod
Material: Copper



OLN-F006

Name: UP inlet ZW43-12
Material: Copper



OLN-F007

Name: Three/four hole base ZW20
Material: Copper



OLN-F008

Name: Side outlet ZW32
Material: Copper



OLN-F013

Name: Isolated moving contacts ZW20
Material: Copper



OLN-F014

Name: Soft connector ZW20
Material: Copper



OLN-F009

Name: Conductive clip ZW32
Material: Copper



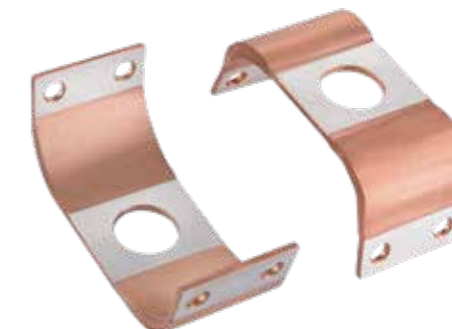
OLN-F010

Name: Up inlet ZW32
Material: Copper



OLN-F015

Name: Contact knife component ZW20
Material: Copper



OLN-F016

Name: Soft connector ZW32
Material: Copper



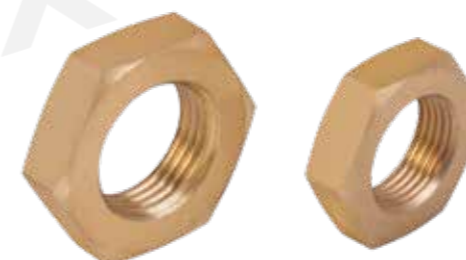
OLN-F011

Name: Conductive clip ZW20
Material: Copper



OLN-F012

Name: Outlet terminal ZW32
Material: Copper



OLN-F017

Name: Interrupter nut ZW32
Material: Copper



OLN-F018

Name: Flange bolts ZW32
Material: Copper

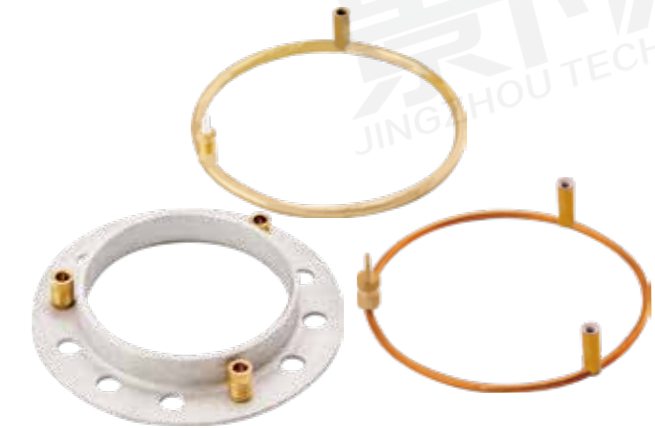


INNER CONE CONDUCTOR SERIES



OLN-G001

Name: Inner cone conductor
Material: Copper



OLN-G002

Name: Induction coil
Material: Copper+Aluminum



OLN-G003

Name: Inner cone conductor
Material: Copper



OLN-G004

Name: Conductor
Material: Copper



OLN-G005

Name: Flange inner cone conductor
Material: Copper



OLN-G006

Name: conductor
Material: Copper



OLN-G007

Name: Flange inner cone conductor
Material: Copper



OLN-G008

Name: Flange inner cone conductor
Material: Copper



OLN-G013

Name: Flange inner cone conductor
Material: Copper



OLN-G014

Name: Shielding ring
Material: Aluminum



OLN-G009

Name: Flange inner cone conductor
Material: Copper



OLN-G010

Name: Flange inner cone conductor
Material: Copper



OLN-G015

Name: Flange inner cone conductor
Material: Aluminum



OLN-G016

Name: Flange inner cone conductor
Material: Aluminum



OLN-G011

Name: Flange inner cone conductor
Material: Copper



OLN-G012

Name: Flange inner cone conductor
Material: Copper



OLN-G017

Name: Flange inner cone conductor
Material: Aluminum



OLN-G018

Name: Spring finger
Material: Beryllium Bronze



OLN-H001

Name: Solid insulated pole up outlet
Material: Aluminum



OLN-H002

Name: Solid insulated pole down outlet
Material: Aluminum



OLN-H003

Name: Solid insulated pole up outlet
Material: Aluminum



OLN-H004

Name: Solid insulated pole down outlet
Material: Aluminum



OLN-H005

Name: Solid insulated Pole up outlet
Material: Copper



OLN-H006

Name: Solid insulated pole down outlet
Material: Copper

SOLID INSULATED UP-DOWN OUTLET SERIES



OLN-H007

Name: 310 Solid insulated pole up outlet 2500A
Material: Copper



OLN-H008

Name: Down outlet conductive rod
Material: Copper



OLN-H013

Name: 310 Solid insulated pole down outlet 3150A
Material: Copper



OLN-H014

Name: 310 Solid insulated cooling rack
Material: Cast aluminum



OLN-H009

Name: 310 Solid insulated pole up outlet 3150A
Material: Copper



OLN-H010

Name: Down outlet
Material: Aluminum



OLN-H015

Name: Solid insulated pole down outlet 4000A
Material: Copper



OLN-H016

Name: Solid insulated cooling rack
Material: Cast aluminum



OLN-H011

Name: 310 Solid insulated pole down outlet 2500A
Material: Copper



OLN-H012

Name: Solid insulated down outlet
Material: Aluminum



OLN-H017

Name: 310 Solid insulated pole down outlet 3150A
Material: Copper



OLN-H018

Name: Solid insulated cooling rack
Material: Cast aluminum



APG FORMING METAL GUIDE INSERT SERIES



OLN-I001

Name: SF6 Insulated Shell Contacts
Material: Copper



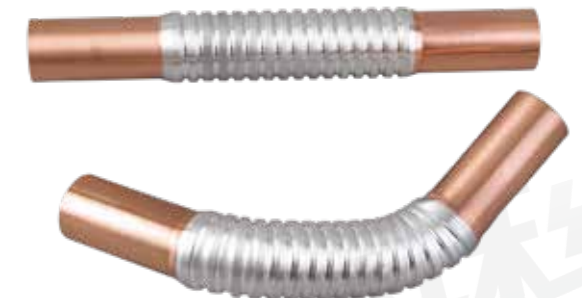
OLN-I002

Name: 202 Conductive rod
Material: Copper



OLN-I003

Name: SF6 Insulated shell contacts
Material: Copper



OLN-I004

Name: Copper aluminum welding
conductive rod
Material: Copper



OLN-I005

Name: Bushing conductive rod
Material: Copper



OLN-I006

Name: Copper aluminum welding
conductive rod
Material: Copper



OLN-I007

Name: Solid insulated conductive rod
Material: Copper



OLN-I008

Name: Solid insulated conductive rod
Material: Copper



OLN-I013

Name: Three-way conductive rod
Material: Copper



OLN-I014

Name: SF6 up outlet seat
Material: Copper



OLN-I009

Name: Solid insulated conductive rod
Material: Copper



OLN-I010

Name: Solid insulated conductive rod
Material: Copper



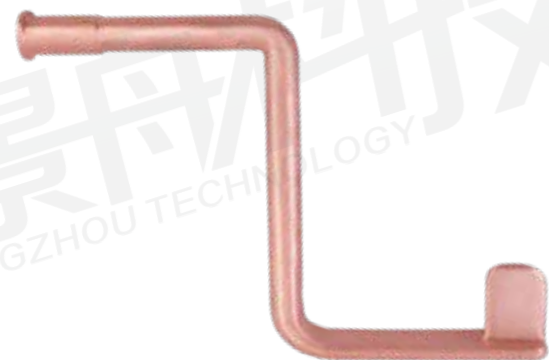
OLN-I015

Name: Solid insulated conductive rod
Material: Copper



OLN-I016

Name: SF6 down Outlet seat
Material: Copper



OLN-I011

Name: Up isolated static contact
Material: Copper



OLN-I012

Name: Down isolated static contact
Material: Copper



OLN-I017

Name: Solid insulated conductive rod
Material: Copper



OLN-I018

Name: Fuse cartridge component
Material: Copper



CONTACT ARM SERIES



OLN-J001

Name: 630A Contact arm copper aluminum welding
Material: Copper+Aluminum



OLN-J002

Name: 1250A Contact arm copper aluminum welding
Material: Copper+Aluminum



OLN-J003

Name: 630A Contact arm (35KV)
Material: Aluminum



OLN-J004

Name: 630A Vulcanized contact arm
Material: Copper+Aluminum



OLN-J005

Name: 35KV 4000A Vulcanized contact arm
Material: Copper



OLN-J006

Name: 4000A Vulcanized contact arm
Material: Copper



STATIC CONTACT SERIES



OLN-K001

Name: 630A Static contact
Material: Copper



OLN-K002

Name: 1250A Static contact
Material: Copper



OLN-K003

Name: 1600A Static contact
Material: Copper



OLN-K004

Name: 2000A Static contact
Material: Copper



OLN-K005

Name: 2500A/3150 Static contact
Material: Copper



OLN-K006

Name: 4000A Static contact
Material: Copper



TULIP CONTACT SERIES



OLN-L001

Name: Tulip contact
Material: Copper

Type	Number of contacts (biplate)	Closing dimension(d1)	Static contact diameter(d1)	Closing dimension(D1)	Static contact diameter(D1)	external diameter
630A/20KA	6	Φ33.5	Φ35	Φ26	Φ28	Φ74
630A/31.5KA	12	Φ33.6	Φ35	Φ26	Φ28	Φ74
1250A/31.5KA	15	Φ47.5	Φ49	Φ40	Φ42	Φ88
1250A/40KA	16	Φ47.5	Φ49	Φ40	Φ42	Φ88
1600A/40KA	18	Φ53.5	Φ55	Φ46	Φ48	Φ94
2000A/40KA	24	Φ77.5	Φ79	Φ70	Φ72	Φ127
3150A/40KA	32	Φ107.5	Φ109	Φ100	Φ102	Φ157
4000A/40KA	41	Φ107.5	Φ109	Φ100	Φ102	Φ157



ISOLATED BLADE SERIES



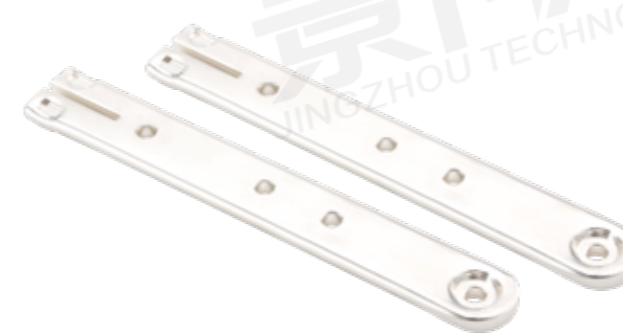
OLN-M001

Name: Isolated blade
Material: Copper



OLN-M002

Name: Isolated blade
Material: Copper



OLN-M003

Name: Isolated blade
Material: Copper



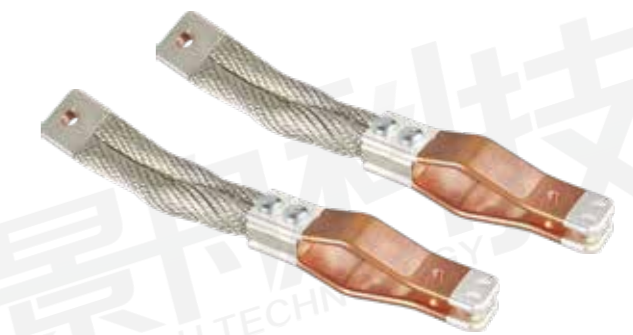
OLN-M004

Name: Interrupter contact
Material: Copper



OLN-M005

Name: Isolated blade
Material: Copper



OLN-M006

Name: Soft connector isolated knife
Material: Copper



OLN-N001

Name: Contactor
Material: Copper



OLN-N002

Name: Contactor
Material: Copper



OLN-N003

Name: Contactor
Material: Copper



OLN-N004

Name: Contactor
Material: Copper



OLN-N005

Name: Conductive bracket
Material: Copper



OLN-N006

Name: Interrupter contacts
Material: Copper

CUSTOM COPPER AND ALUMINUM SHAPED PARTS SERIES



OLN-N007

Name: T-shaped static contact
Material: Copper



OLN-N008

Name: Contact rod
Material: Copper



OLN-N013

Name: Structural oddity contact
Material: copper



OLN-N014

Name: Structural oddity contact
Material: copper



OLN-N009

Name: T-shaped static contact
Material: Copper



OLN-N010

Name: Octagonal contact
Material: Copper



OLN-N015

Name: Structural oddity contact
Material: copper



OLN-N016

Name: Structural oddity contact
Material: copper



OLN-N011

Name: T-shaped static contact
Material: Copper



OLN-N012

Name: Isolated knife block
Material: Copper



OLN-N017

Name: Structural oddity contact
Material: copper



OLN-N018

Name: Structural oddity contact
Material: copper



OLN-0001

Name: Seal flange
Material: Aluminum



OLN-0002

Name: Seal flange
Material: Aluminum



OLN-0003

Name: Seal flange
Material: Aluminum



OLN-0004

Name: Seal flange
Material: Aluminum



OLN-0005

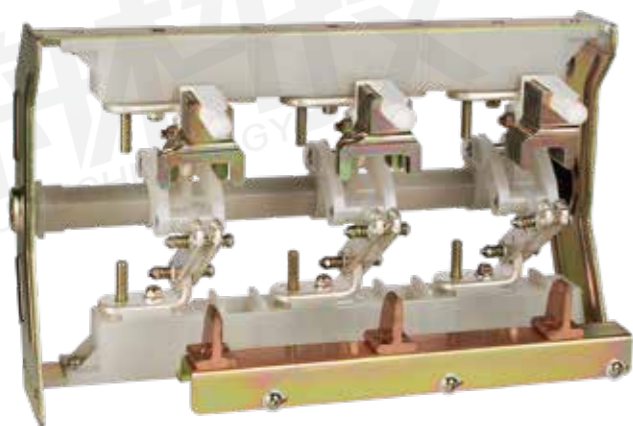
Name: Seal flange
Material: Copper



OLN-0006

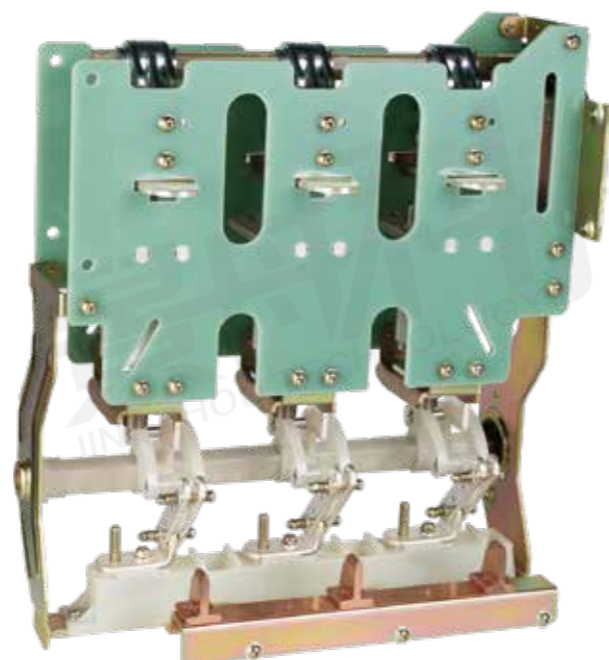
Name: Seal flange
Material: Copper

SEAL FLANGE SERIES



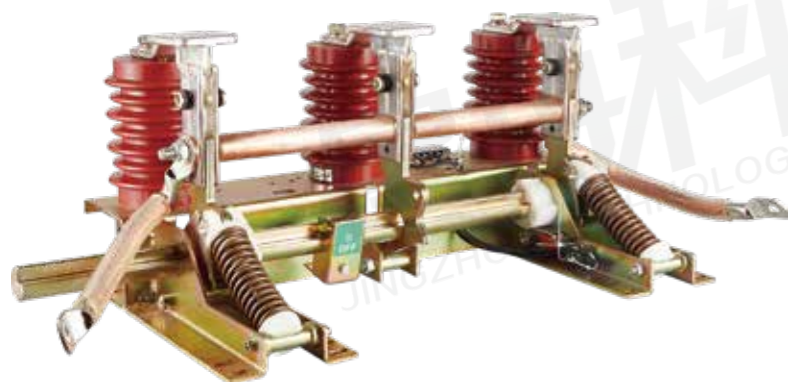
OLN-P001

Name: Load switch
Material: Copper



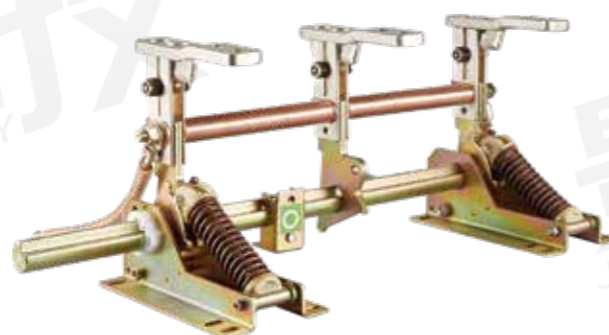
OLN-P002

Name: Circuit breaker with isolated switch
Material: Copper



OLN-P003

Name: Indoor HV Earthing switch
Material: Copper



OLN-P004

Name: Indoor HV Earthing switch
Material: Copper



OLN-Q001

Name: Load switch movable fit (three stations)
Material: Copper



OLN-Q002

Name: Load switch movable fit (two stations)
Material: Copper



OLN-Q003

Name: Load switch movable fit (three stations)
Material: Copper



OLN-Q004

Name: Circuit breaker switch movable fit
Material: Copper



OLN-Q005

Name: Circuit breaker switch movable fit
Material: Copper



OLN-Q006

Name: Worm wheel
Material: Copper