

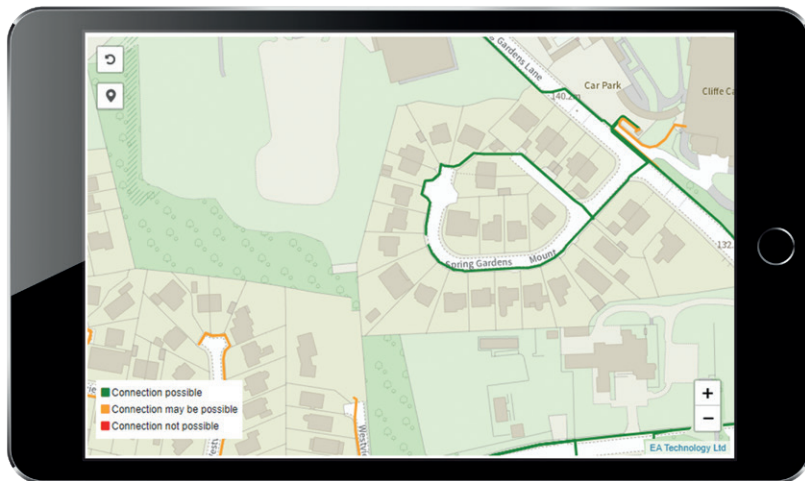
VisNet[®] ConnectLite

Personalised connection estimation tool

How it works

VisNet[®] ConnectLite has been successfully operating for over four years and is a perfect first step into customer connection self-service.

It considers your unique requirements, location, and available network capacity to provide a tailored price estimate for your connection.



Benefits include:

- Connection cost budget estimator.
- Network capacity assessment.
- Red / amber / green (RAG) network capacity visibility.
- Map canvas background.
- Manual connection drawing tools.
- Bill of materials (BoM) generation.
- Step by step customer guidance.
- Customer connection type interview (optional).

Book a demonstration or find out more

EA Technology Limited
Capenhurst Technology Park
Capenhurst, Chester CH1 6ES
PUBLIC

t +44 (0) 151 347 2313
e sales@eatechnology.com
www.visnet.tech
V1 / 19.09.24