

迈科磁元

C13

Welcome to
MAIKE!



MAIKE Magnetism Co., LTD



COMPANY PROFILE



Maike Magnetism

Company



2005

Established



Mianyang

The only National
Science and
Technology City in

China.

Headquarter



6000
Square
meters

Factory area

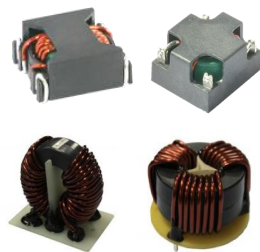




Main Business



Magnetic Components Solution Provider



Common
Mode
Inductor



Power
Inductor/SMD
Inductor



SMPS
Transformer



Current
Transformer



Balun
Transformer

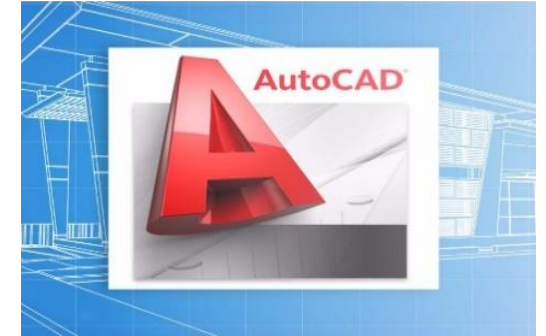
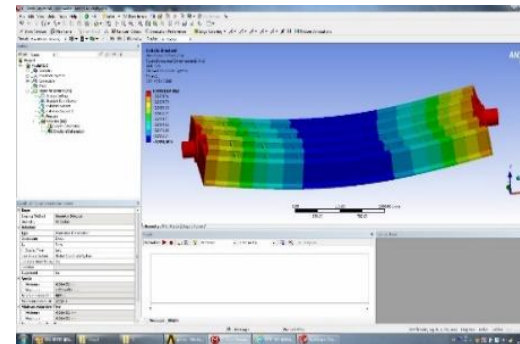
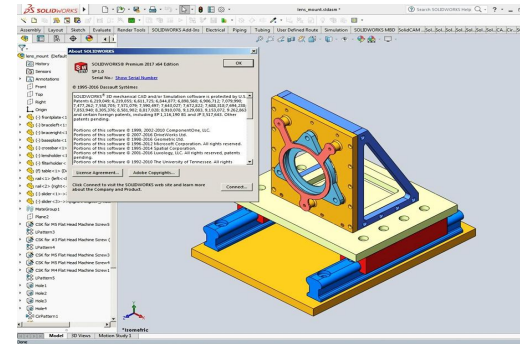
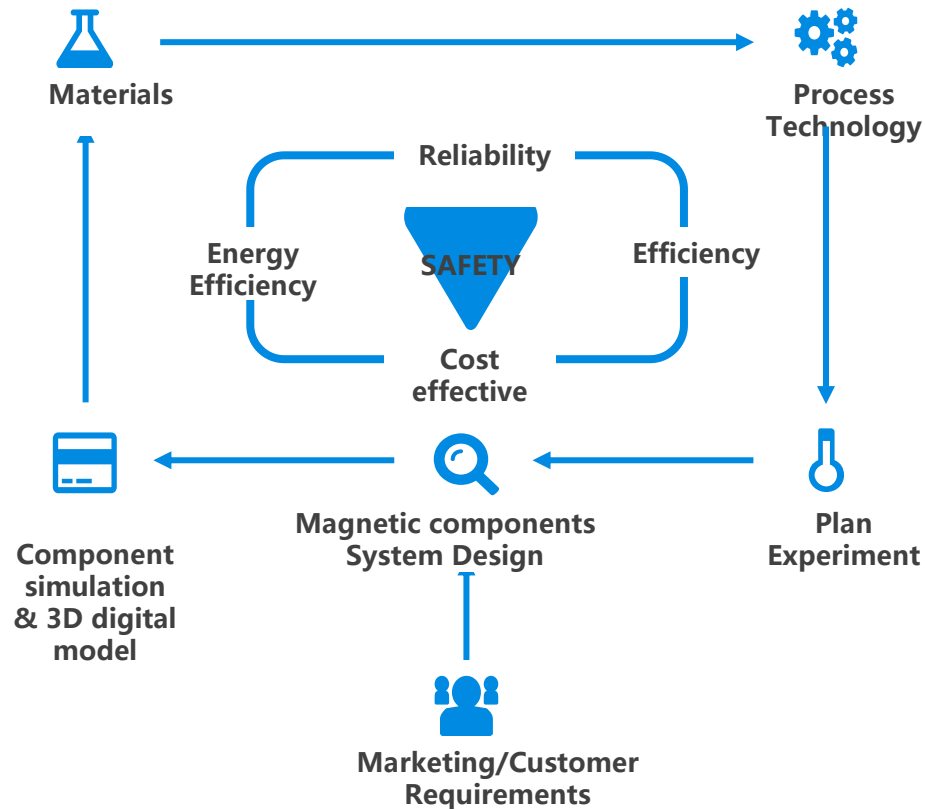


FOCUS ON the research & development of magnetic components and build a highland of product & process technology.

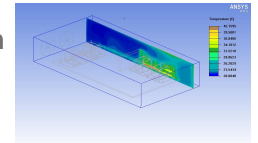
R&D+Design---Core competencies

Product Design(ODM) + Materials Development+

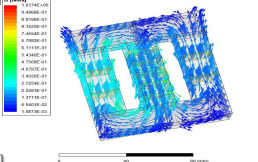
Mold/Bobbin Design+ Automated development+Experiment planning



Thermal simulation



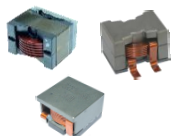
Magnetic simulation



Product series and classification

Power Inductors

Flat Power Inductor



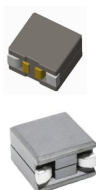
Flat Ferrite Core Type
Metal Alloy Powder Core Type
Flat Ferrite Wire & Round wire

Molding Power Inductor



Carbonyl iron
Molding Inductor
Powder core Molding Inductor
Flat Molding Inductor

Power Bead Inductor



PB series
PBT series
Customized products

Chokes

Common Mode Choke



SMT Flat CMC
SMT Toroid
CMC
Chip LAN

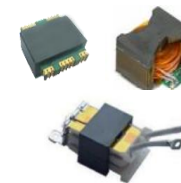
Toroid-core Choke



DM Choke
PFC Choke
High Current Boost Choke

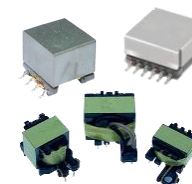
Transformers

Planar Transformer



Multi-layer Planar transformer
Combined Planar transformer
Composite Planar Transformer

High Frequency Transformer



SMT High Freq. Transformer
THT High Freq. Transformer
POE Transformer

Custom inductance



C series reactance
Potting type
Others Customized products

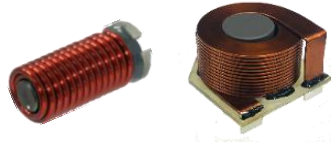
Inductors & Chokes

Coils

Air-core
SMT, THT



Rod-core
SMT, THT

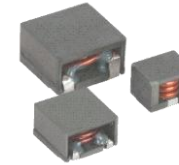


Special



Standard Flat Power Inductor

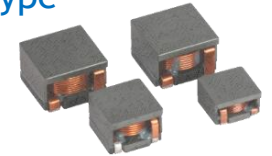
Flat Type



High current
Type

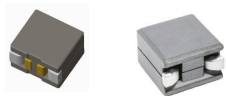


High density
Type

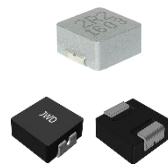


Standard Power Inductor

Power bead inductor



Molding Power Inductor

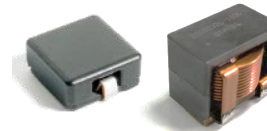


Custom Flat Power Inductor

Flat wire & Ferrite



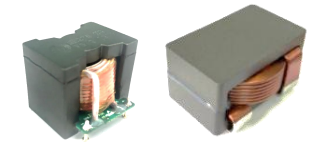
Flat wire & Powder



Copper

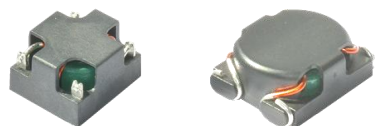


Combined

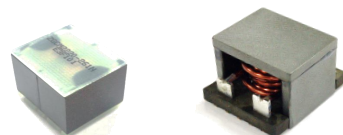


EMC/EMI Chokes

Toroid core type
SMT



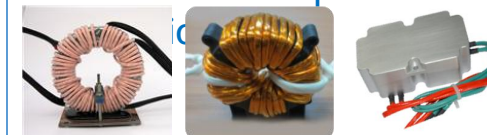
Flat core type
SMT



Toroid core type
CM choke & DM choke



Special core type
High current & special



★★★★★★★★★★
**CUSTOM Inductors
& Chokes are
available.**
★★★★★★★★★★

APPLICATIONS

NEW ENERGY



- Photovoltaic inverter
- Wind Power
- Energy Storage
- EV charging piles

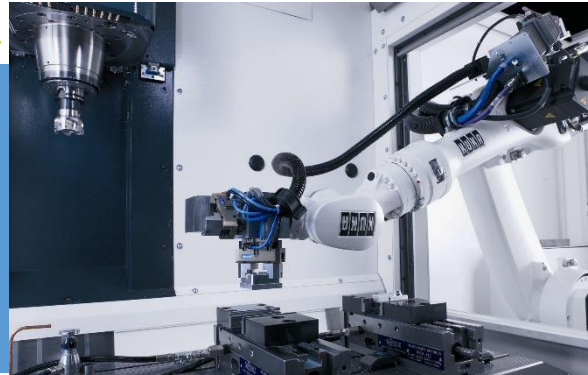
DATA PROCESSING & COMPUTING

- Server
- Data center
- Data storage
- Image processing



INDUSTRY

- Industrial Ethernet (IE)
- Industrial Internet of Things (IIoT)
- Industrial Automation
- Industry 4.0
- Power Tools



COMMUNICATION

- Macro Base Station
- Small Cell
- Server
- Core Network
- LAN

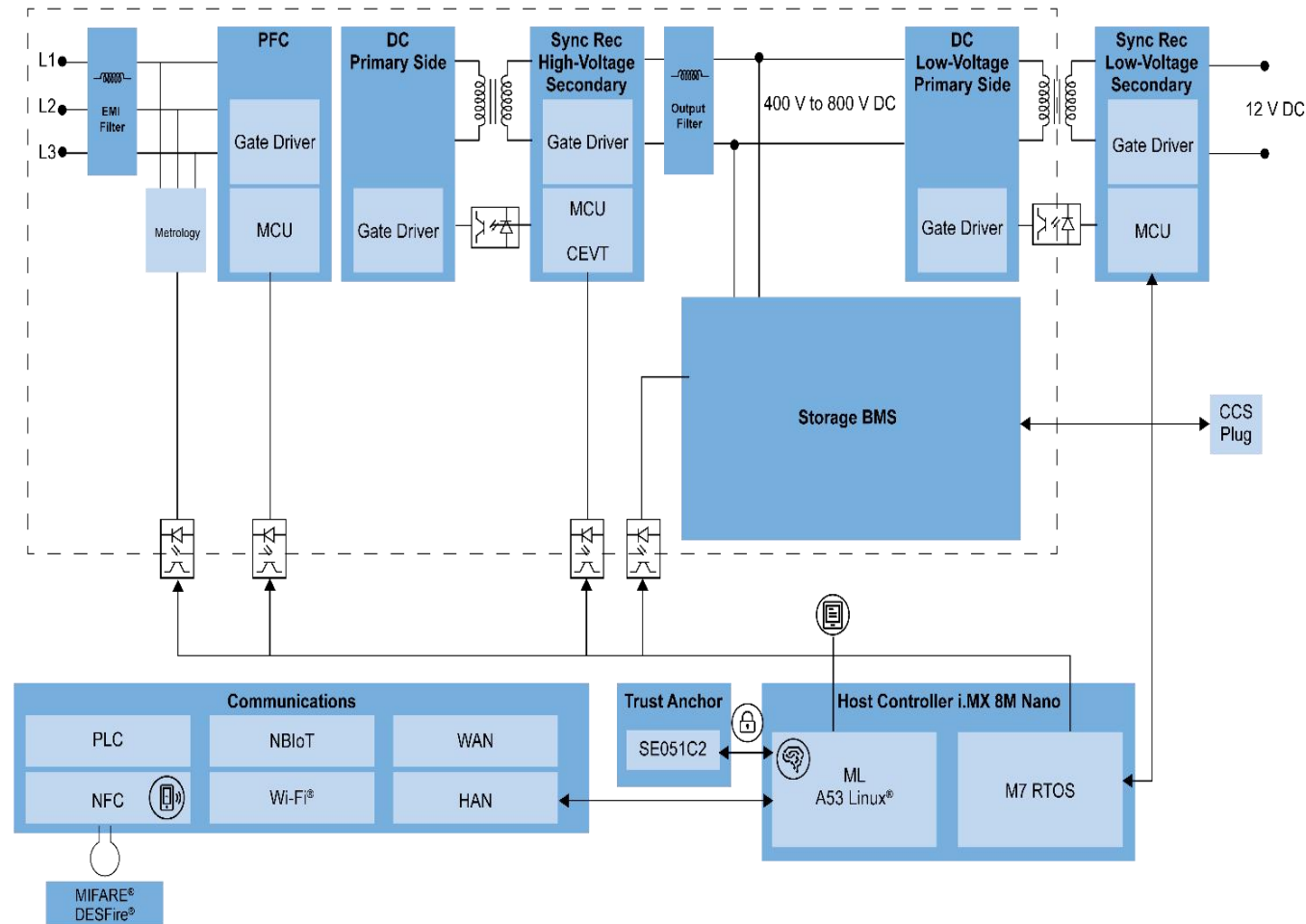


IoT

- Smart City
- Smart Grid
- Medical
- Security



EV Charging Piles



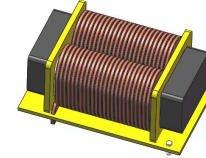
A-AC Power Line Choke



- Various core & wire available
- Core materials:
 - Amorphous\Ferrite core
- Wire: Flat\Round wire
- Current: UP 100A
- Hi-pot: 1.5kV~2.5kV
- Operating Temp. from -40 ~ 150° C

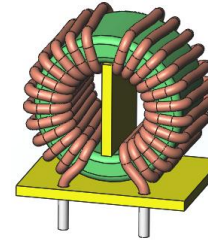
Product Lines

B-PFC Choke



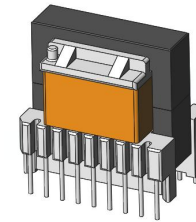
- Various core & Core materials:
 - Fe-si\Ferrite core
- Wire: Flat\Round wire
- Current: UP 50A
- Operating Temp. from -40 ~ 150° C
- Type: Customized

C-Common Mode Choke



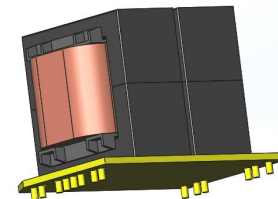
- Various core & Core materials:
 - Amorphous\Ferrite core
- Wire: Flat\Round wire
- Current: UP 50A
- Operating Temp. from -40 ~ 150° C
- Type: T30/T40/T45/T50

D-Driver Transformer

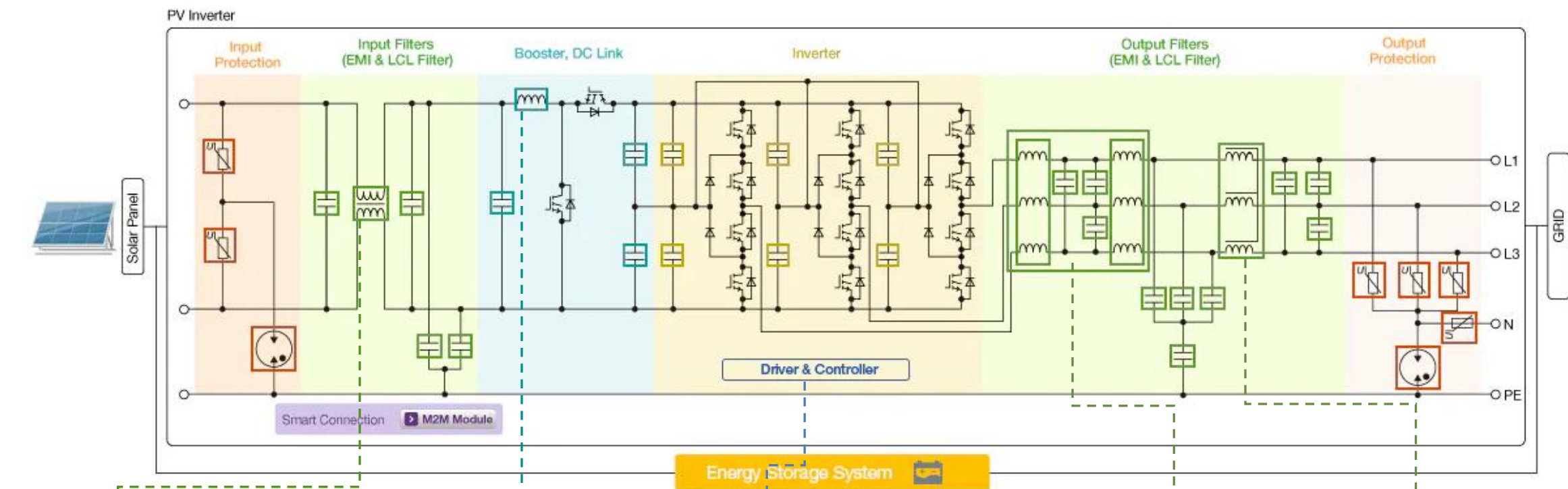


- Multiple output type
- Withstand voltage: UP 1.5kV
- Operating Temp. from -40 ~ 150° C
- Type:
 - EE19/EE20/ER28/EP13

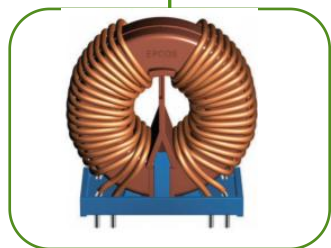
E-Power Transformer



- Various core & wire available
- Core materials:
 - Ferrite core
- Power: Up 100KW
- Operating Temp. from -40 ~ 150° C
- Type:
 - EE55/EE60/EE65/EE70/PQ60/PQ65



Common Mode Choke



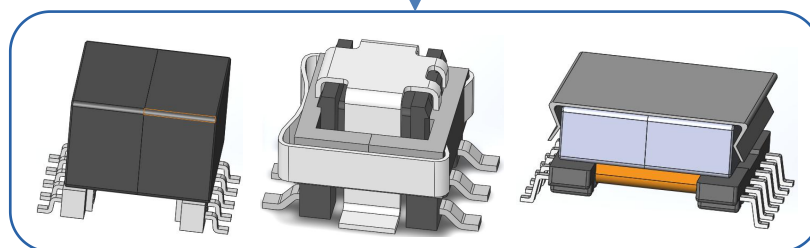
- Various core & Core materials:
Amorphous\Ferrite core
- Current:UP 50A
- Type: T30/T40/T45/T50

PFC Choke



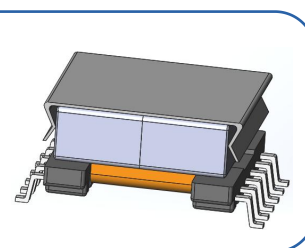
- Various core & Core materials:
Dust \Ferrite core
- Current:UP 50A
- Type: Customized

Current Sense



- Low DCR/Low Profile
- Rated Current:Up 20A
- Turn Ratio:1:50/70/100/125/150/200
- Operating Temp. from -40 ~150° C

Driver Transformer



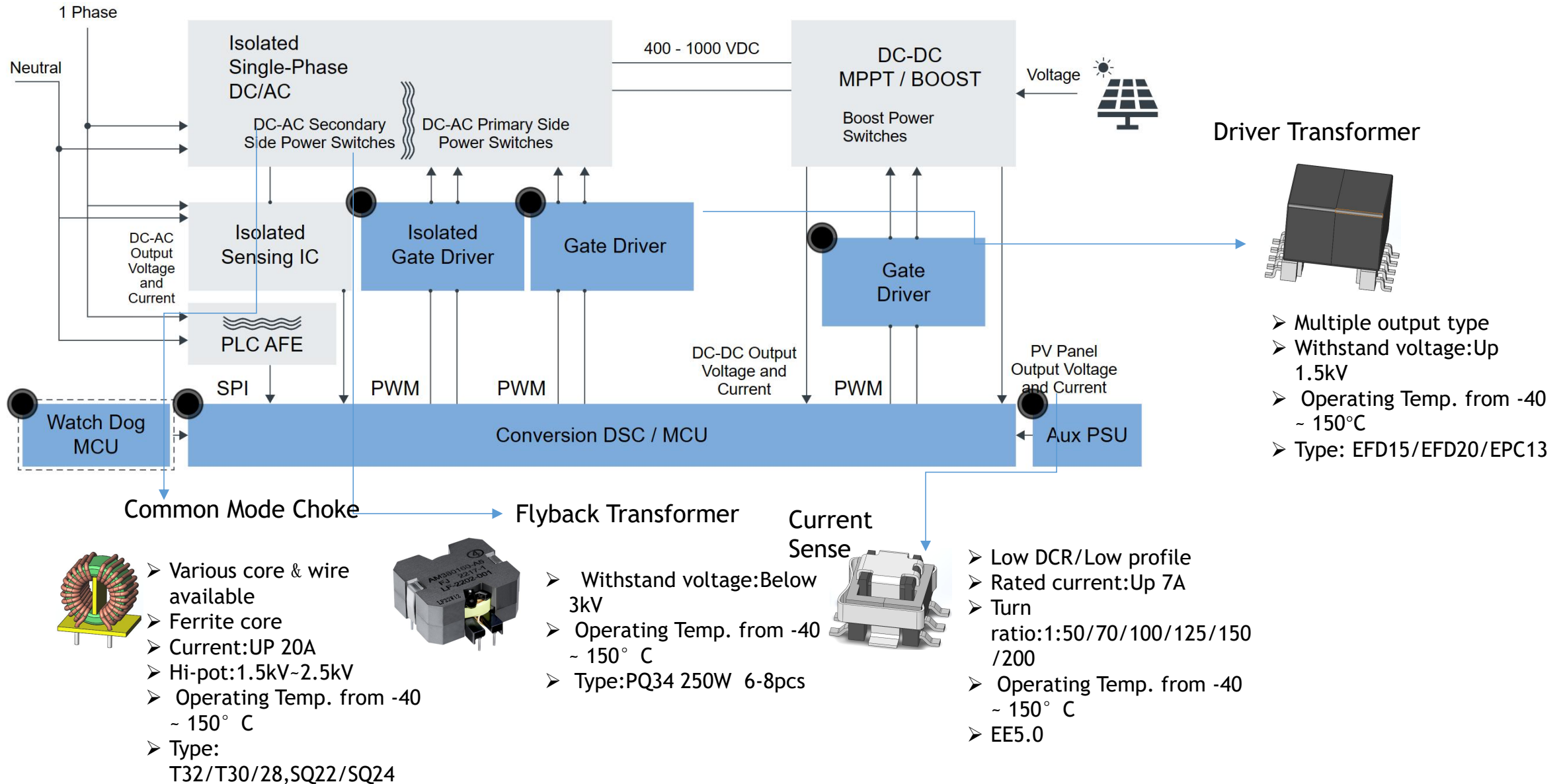
- Multiple output type
- Withstand voltage:Up 1.5kV
- Operating Temp. from -40 ~ 150°C
- Type: EFD15/EFD20/EPC13

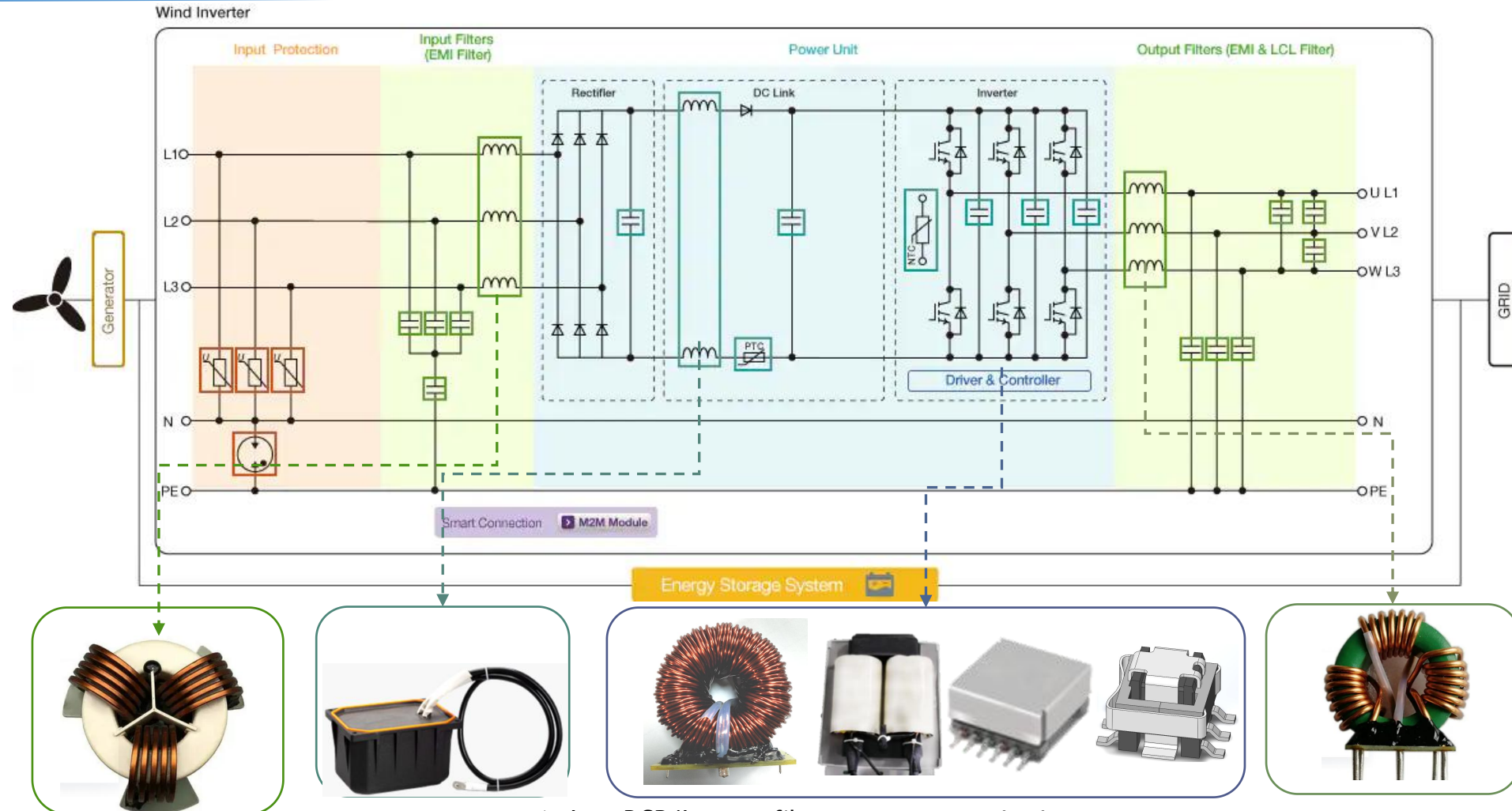


Various core & wire available

- Core materials:
Amorphous\Ferrite core
- Current:UP 100A
- Hi-pot:1.5kV~2.5kV
- Operating Temp. from -40 ~ 150° C

Solar Micro Inverter





- Various core & Core materials:
Amorphous\Ferrite core
- Current:UP 50A
- Type: T30/T40/T45/T50

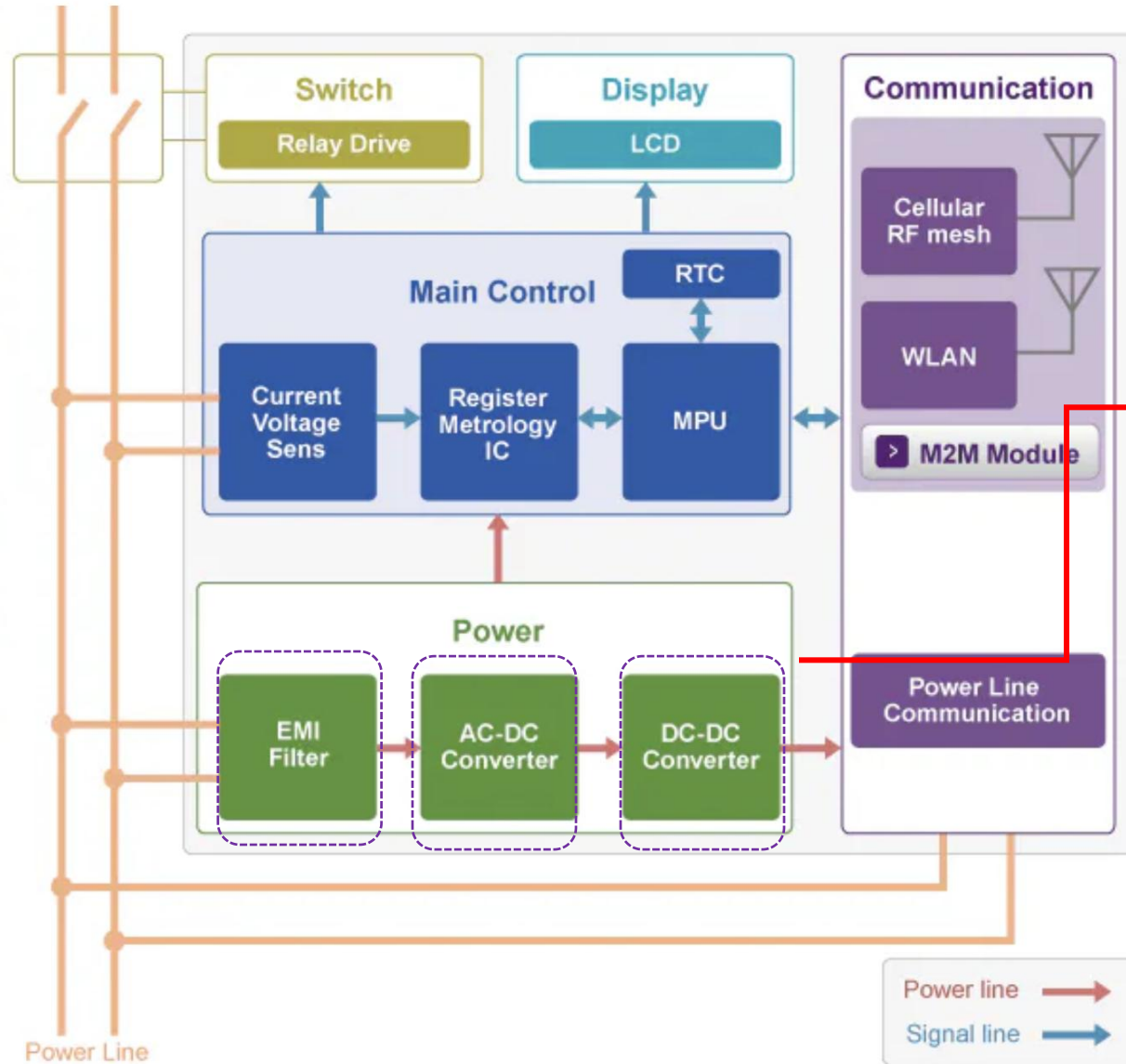
- Various core & Core materials:
Dust \Ferrite core
- Current:UP 50A
- Type: Customized

- Low DCR/Low profile
- Rated current:Up 50A
- Turnratio:1:50/70/100/125/150/200
- Operating Temp. from -40 ~ 150° C
- EP7/EP10/EP13/EE8.3

- Multiple output type
- Withstand voltage:Up 1.5kV
- Operating Temp. from -40 ~ 150°C
- Type: EFD15/EFD20/EPC13

- Various core & wire available
- Core materials:
Amorphous\Ferrite core
- Current:UP 100A
- Hi-pot:1.5kV~2.5kV
- Operating Temp. from -40 ~ 150° C

Uninterruptible Power Supply

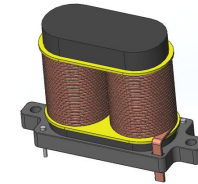


Common Mode Choke



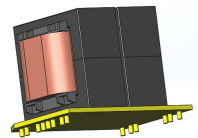
- Various core & Core materials:
- Amorphous\Ferrite core
- Current: UP 50A
- Type: T14/T18/T20/T22

PFC Inductor



- Various core & wire available
- Dust\Ferrite core
- Wire: Flat\Round wire
- Current: UP 20A
- Operating Temp. from -40 ~ 150° C
- Type: Customized

Transformer

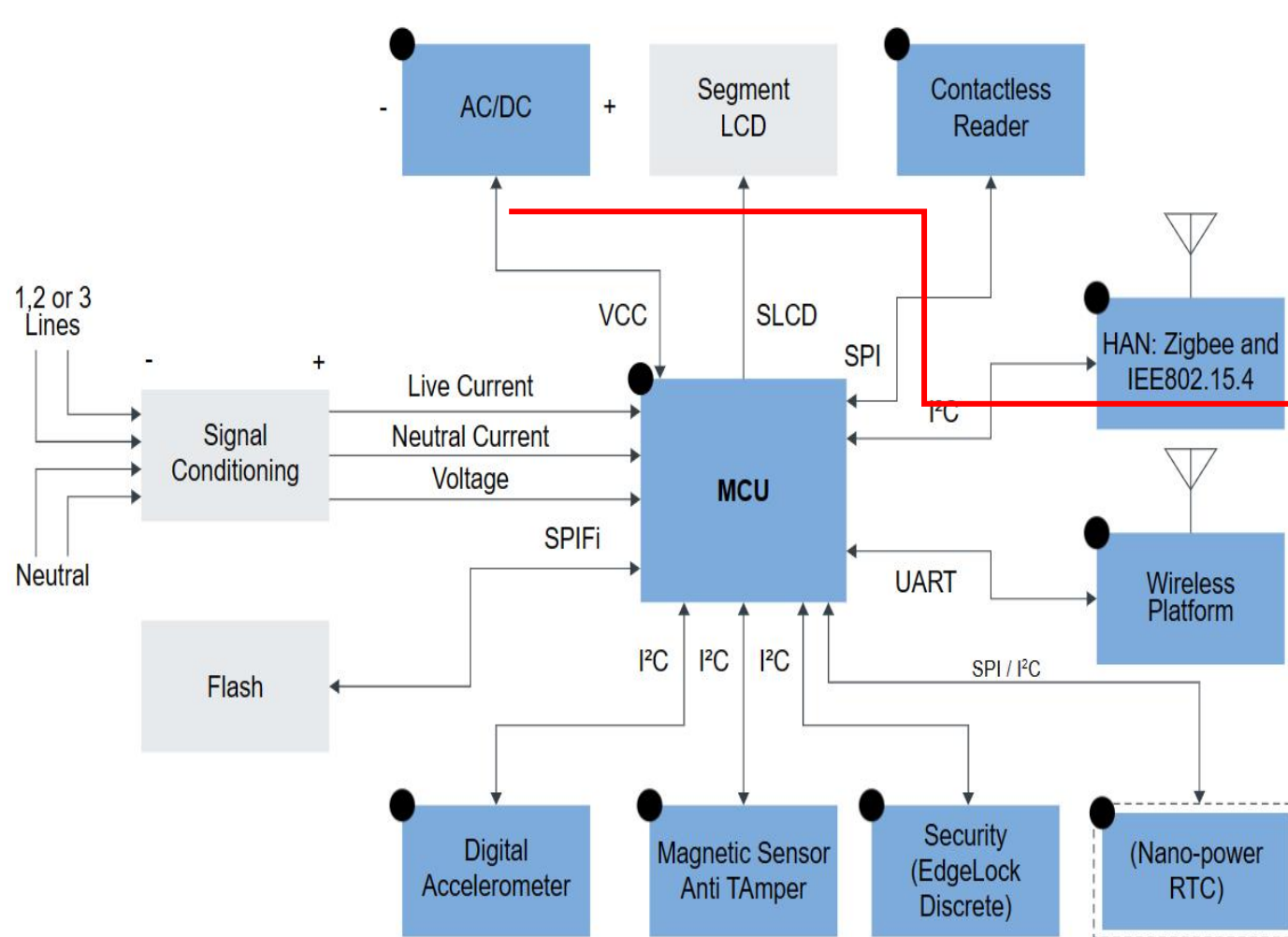


- Withstand voltage: Up 1.5kV
- Operating Temp. from -40 ~ 150°C
- Type: low Power EE16/EE19/EE22
- Type: High Power PQ32/PQ40

Power Inductor



- Various core & wire available
- Dust\Ferrite core
- Wire: Flat\Round wire
- Current: UP 250A
- Operating Temp. from -40 ~ 150° C



Common Mode Choke



- Various core & Core materials:
- Amorphous\Ferrite core
- Current: UP 50A
- Type: SQ12/SQ180/SQ20/SQ22

Transformer

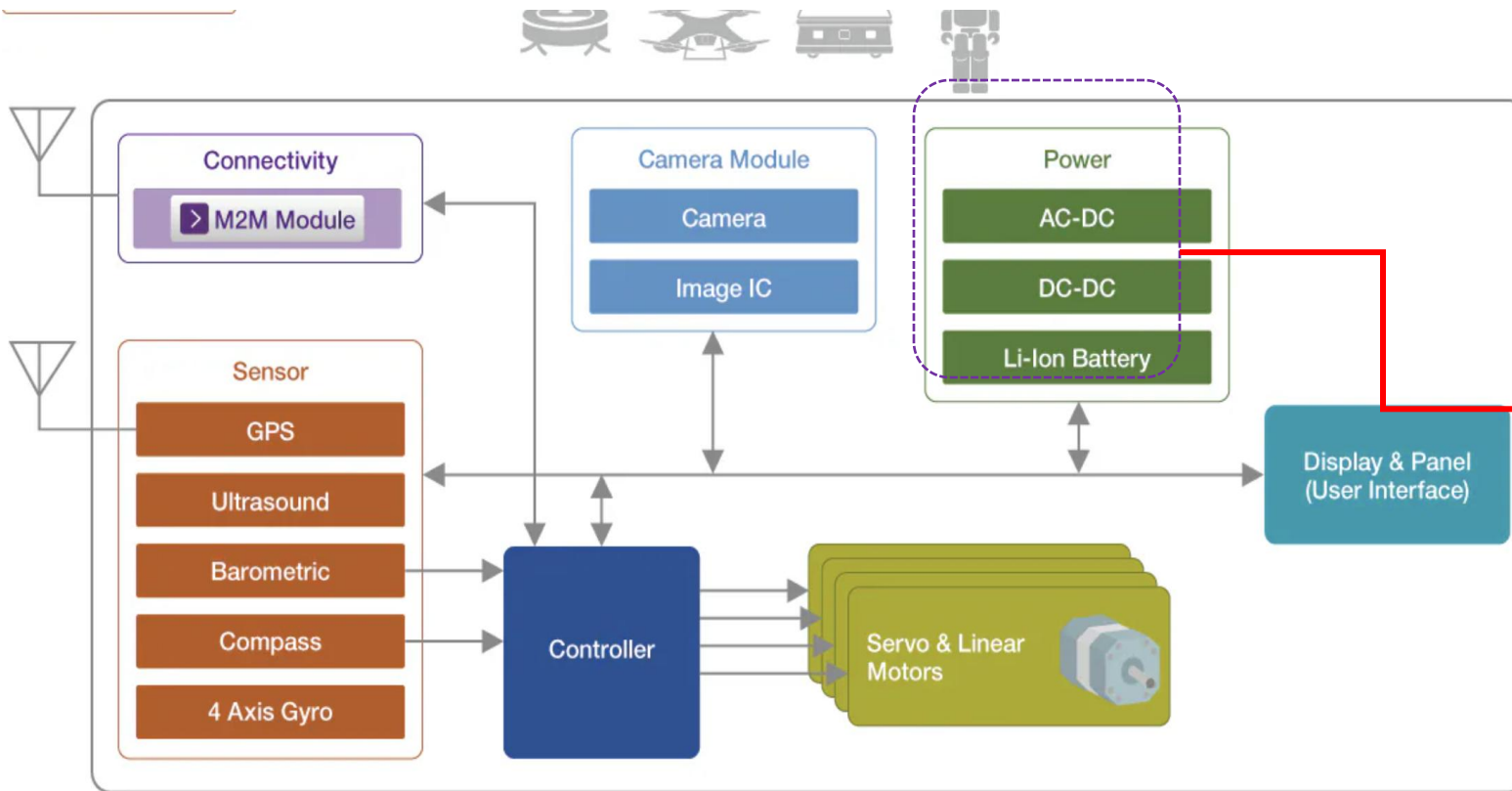


- Withstand voltage: Up 1.5kV
- Operating Temp. from -40 ~ 150°C
- Type: low Power EE16/EE19/EE22
- Type: High Power PQ32/PQ40

Power Inductor



- Various core & wire available
- Core materials: Dust\Ferrite core
- Wire: Flat\Round wire
- Current: UP 20A
- Operating Temp. from -40 ~ 150° C

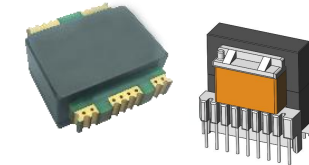


Common Mode Choke



- Various core & Core materials:
- Amorphous\Ferrite core
- Current:UP 50A
- Type: T14/T18/T20/T22

Transformer(Centralization)



- Withstand voltage:Up 2.5kV
- Operating Temp. from -40 ~ 150° C
- EP10\EP13\EFD15\EFD20\Planar ER16 EQ18\EQ20\EQ25

Power Inductor



- Various core & wire available
- Dust\Ferrite core
- Wire:Flat\Round wire
- Current:UP 20A
- Operating Temp. from -40 ~ 150° C

Why Choose US?



➤ With extensive expertise in magnetic materials and components, combined with senior power supply engineers, MAIKE collaborates with customers on R&D and debugging for various power supplies. A well-designed magnetic components ensures optimal performance and an exceptional user experience.

Provide End-to-end turnkey solutions, Concept/Idea---Design--Prototype--Mass production

➤ Critical Quality Control---Strict selection in raw materials, Incoming raw materials inspection & On-site inspection during production & 100% inspection of all finished products & Failure analysis to ensure the highest quality standards. These rigorous processes guarantee Materials traceability and qualified magnetic components meet the highest quality standards before delivery.

Our commitment to quality and sustainability is reflected in our ISO 9001:2015 Quality Management Certification and ISO 14001:2015 Environmental Management Certification. MAIKE Products comply with internationally recognized standards, including UL, RoHS, TUV, VDE, CE, GS, and EMC, ensuring safety, reliability, and environmental responsibility.

➤ Cost-effective & Fast Response & On-time delivery -- design proposal or solutions be provided within 3-5 working days after customers put forward concepts or ideas. Maike Magnetics has an efficient production and supply chain management system, which can ensure fast delivery and meet the market needs .

Quality First & Customer Oriented



Building C13-2,Zhongnan High-Tech Industrial Park,
Anzhou District,Mianyang City,Sichuan,CHINA



Tel/Fax:86 816-2810863 Mob/WhatsApp:86-13982270182
E-mail:irenerao@maikecn.com; sales@maikecn.com



www.maikecn.com