

ICE

ICE Mains Services

Quick Guide



Powering up your stand is probably the most complicated part of exhibiting.

Whether you need power for a few hours or around the clock, this guide will help you understand your options and the associated requirements to ensure a smooth and compliant process when arranging electrical power for your stand at **ICE** in **Fira Barcelona**.

What are my power supply options at Fira Barcelona?

Exhibitors at ICE Barcelona have the flexibility to choose between two main power supply options based on their specific needs:

24-Hour Power Supply

For those who require continuous power, the 24-hour supply option is available. This is particularly useful for stands with equipment that needs to remain operational overnight or for exhibitors who prefer not to shut down their displays.

12-Hour Power Supply

This option is ideal for exhibitors who only need power during the event's operational hours. It ensures that your stand is powered up during the day and turned off at night, helping to conserve energy and reduce costs.

There is also the opportunity to incorporate different RCCDs in conjunction with a supply to accomodate any specialist requirements:

30mA RCD

By default an electrical supply is proctedby a 30mA RCCD in order to conform with EU and local regulation electrotechnical regulation.

300mA and SI RCCD

For dedicated and specialist installations such as AV equipment, Server Farms or Machinery, less sensitive or reinforced continuity RCCD can be provided



Additionally, to accommodate different preparation schedules, exhibitors can select the number of build-up days required for their stands. The available options are:

2 DAYS

2 days:

Suitable for smaller setups or those with minimal installation requirements.

4 DAYS

4 days:

A balanced option for medium -sized stands that need a bit more time for setup.

7 DAYS

7 days:

Ideal for large or complex installations that require extensive preparation.

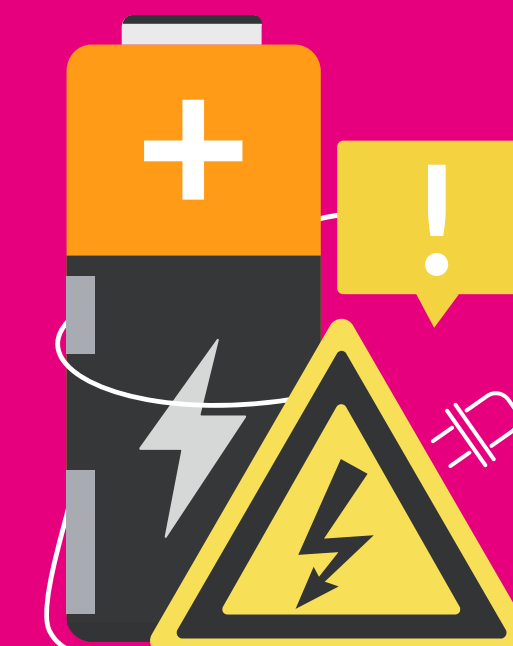
All these different options are listed on our Espresso website at this link:

Order Electrics ▶

What if I can't find the type of power supply that I need?

For exhibitors with specific electrical needs, such as connections exceeding 40kW or machines requiring a differential above 30mA, special arrangements can be made.

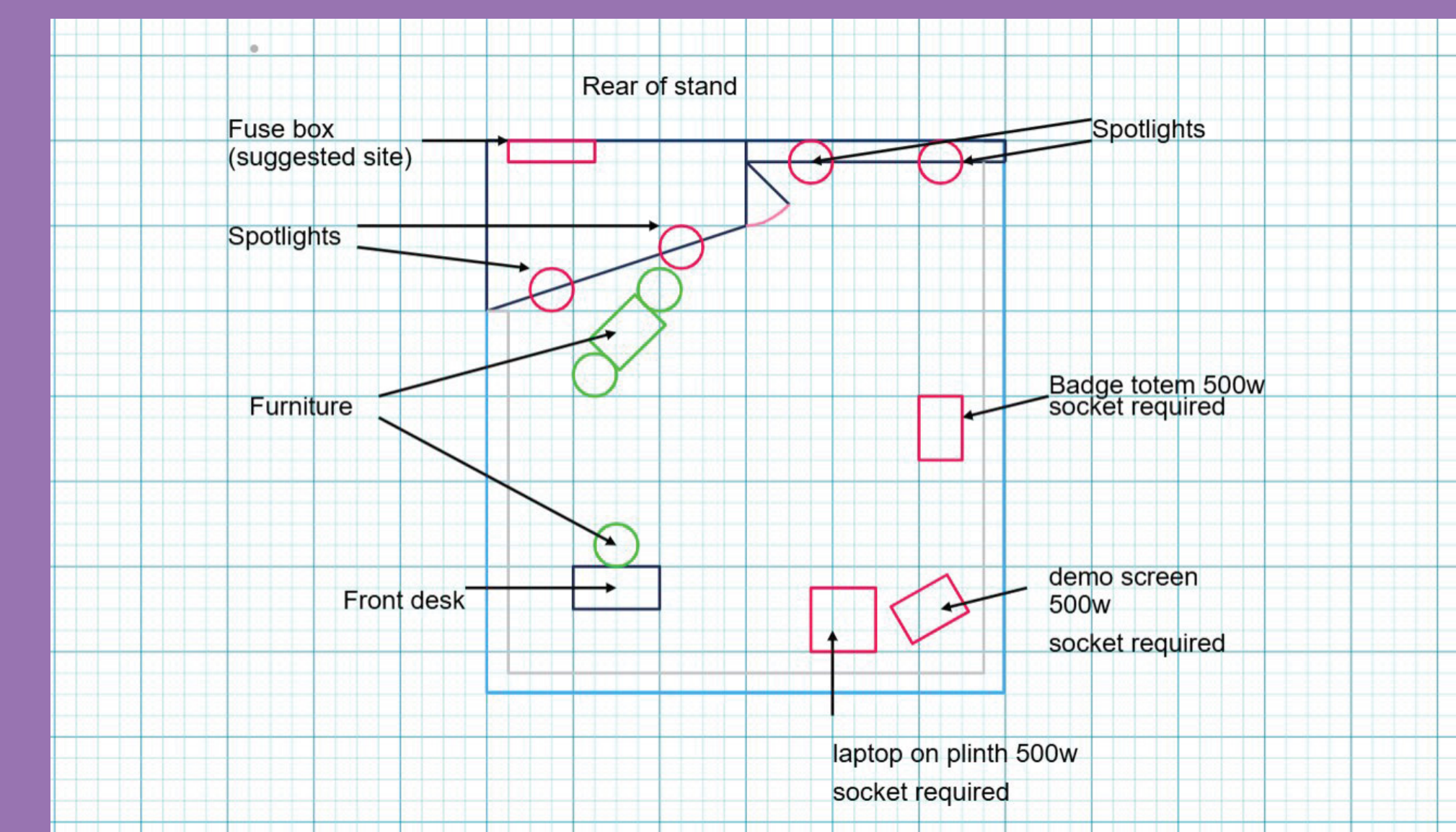
These requirements are available upon request and necessitate a technical project to be completed. The cost for these special arrangements will be calculated based on the total amount of kW ordered. For assistance with these requests, please contact the team at **ICEEU@ges.com**



What should I know about local regulations in Barcelona, Spain?

Local Electrotechnical Regulations

In compliance with local electrotechnical regulations, any stand requiring more than 50kW of power must have a technical project completed and signed by a licensed (Catalan) engineer. This ensures that all installations meet safety standards and regulatory requirements.



An additional fee will be applied for this service, calculated based on the total amount of kW ordered at a cost of €10.15 / kw for standard duration supplies and €13.65 /kw for where 24 hours power is concerned.

If you are unsure if a fee will apply to your case, feel free to get in touch with our dedicated team at **ICEEU@ges.com**

Overview of Service Ducts

Most of the ducts at Fira Gran Via contain 7 connections, 1 x 63A, 2 x 32A and 4 x 16A. Each connection will be a female 400V CETAC consisting of 5 pins or 3 phases, earth and neutral.

When a service duct is shared between multiple stands within a single block, it is essential that the duct remains accessible at all times. This can be achieved by ensuring there is a hatch that provides easy access for the venue electricians. To facilitate the installation of a hatch, it is recommended to construct a platform with a height of at least 50mm if it is intended solely for electrical cables. However, if a water connection is required for any of the neighbouring stands, the platform height should be increased to a minimum of 100mm.

Please be aware that any movment of supplies between ducts onsite will incur the cost of the supply again plus any onsite surcharges. This is due to the addiitonal labour and certification required by the venue to comply with electrotechnical regulation.



Feeling empowered?

Order Electrics ▶

Or call us on: +44 (0)2476 380 180