

# INTERNATIONAL COLLABORATION & INNOVATION IN POLICE FORENSICS TRAINING

Kevin Lothridge, Executive Director  
National Forensic Science Technology Center at Florida International University  
Keith Fryer, Director  
College of Professional Development  
30 October 2018

---

## Contributors:

Lori Sullivan, NFSTC@FIU  
Mike Thompson, CPD  
Yaslam Altayeb CPD  
Travis Larkin MIDEO Systems Inc.

---

# WHO IS NFSTC@FIU?

- 23 years of service:  
*Science Serving Justice*
- HQ in Largo, FL
- Services to public crime laboratories, law enforcement and military:
  - Training
  - Testing and Evaluation
  - Technology Support
  - Laboratory Assessments



# WHO IS THE CPD?

- Training and professional development for police forensics practitioners
- Competence based approach
- Long history of international collaboration
- European and wider international
- Integrating forensic science within the investigative process



# GLOBAL MOVE TO ISO ACCREDITATION

- Forensic science has no borders
- ISO 17025 is the most crucial accreditation standard for forensic laboratories
- Requires staff to be:
  - Competent
  - Qualified
  - Educated
  - Trained



# WHY INTERNATIONAL COLLABORATION?

- Global move toward evidence-based investigations and adversarial justice systems
- More laboratories worldwide are seeking accreditation
- Easier to rework than to reinvent
- Combine complementary strengths
- Build sustainability and resources
- Resilience
- Add to vocational skills with academic rigour





# FORENSIC TRAINING GAPS

- Unified, consistent content and quality
- Life cycle support
- Access
- Officers of the court
- Fragmented requirements and lexicon



# ONLINE EDUCATION

- First step in training is education
- Understand need of the role and what is expected, then train to it
- FIU is joining growing trend of online education options
- Cost-effective solution
- Hybrid or fully online options



# WHAT IS BLENDED LEARNING?





# BLENDED LEARNING - CSI

The screenshot displays the user interface for the 'Introduction to Crime Scene Investigation' course, developed by the National Forensic Science Technology Center (NFSTC) in 2016. The interface is divided into three main sections: a left-hand navigation menu, a central content area, and a right-hand sidebar.

**Left Navigation Menu:** This menu is organized into three main categories, each with a dropdown arrow:

- Course Home:** Includes links to 'Course Overview', 'Introduction', and 'Course Focus'.
- Module 1: Physical Evidence:** This module contains a comprehensive list of topics: 'Learning Objectives', 'Introduction', 'Linkage Triangle', 'The Value of Physical Evidence', 'Locard's Exchange Principle', 'Types of Physical Evidence', 'Knowledge Check', 'Trace Evidence', 'Integrity of Trace Evidence', 'Biological Evidence', 'DNA Testing', 'Biological Evidence Safety Gu...', 'Integrity of Biological Evidence', 'Biological Evidence Contamin...', 'Knowledge Check', 'Comparative Evidence: Laten...', 'Comparative Evidence: Tool...', 'Recovery of Tools and Tool M...', 'Knowledge Check', and 'Summary'.
- Module 2: Crime Scenes:** Includes links to 'Learning Objectives', 'Supplemental Course Material', 'Types of Crime Scenes', and 'Special Considerations'.

At the bottom of the left menu is a 'Search...' input field.

**Central Content Area:** The header of this section reads 'Introduction to Crime Scene Investigation © 2016 NFSTC'. The main visual is a photograph of yellow evidence markers with numbers 11, 8, 12, and 14 placed on a dark surface. Below the image, the NFSTC logo is displayed with the tagline 'SCIENCE SERVING JUSTICE'. A welcome message states: 'Welcome to the **Introduction to Crime Scene Investigation** course. Click on the buttons below to learn more about this course. When you are ready, click Next to get started.'

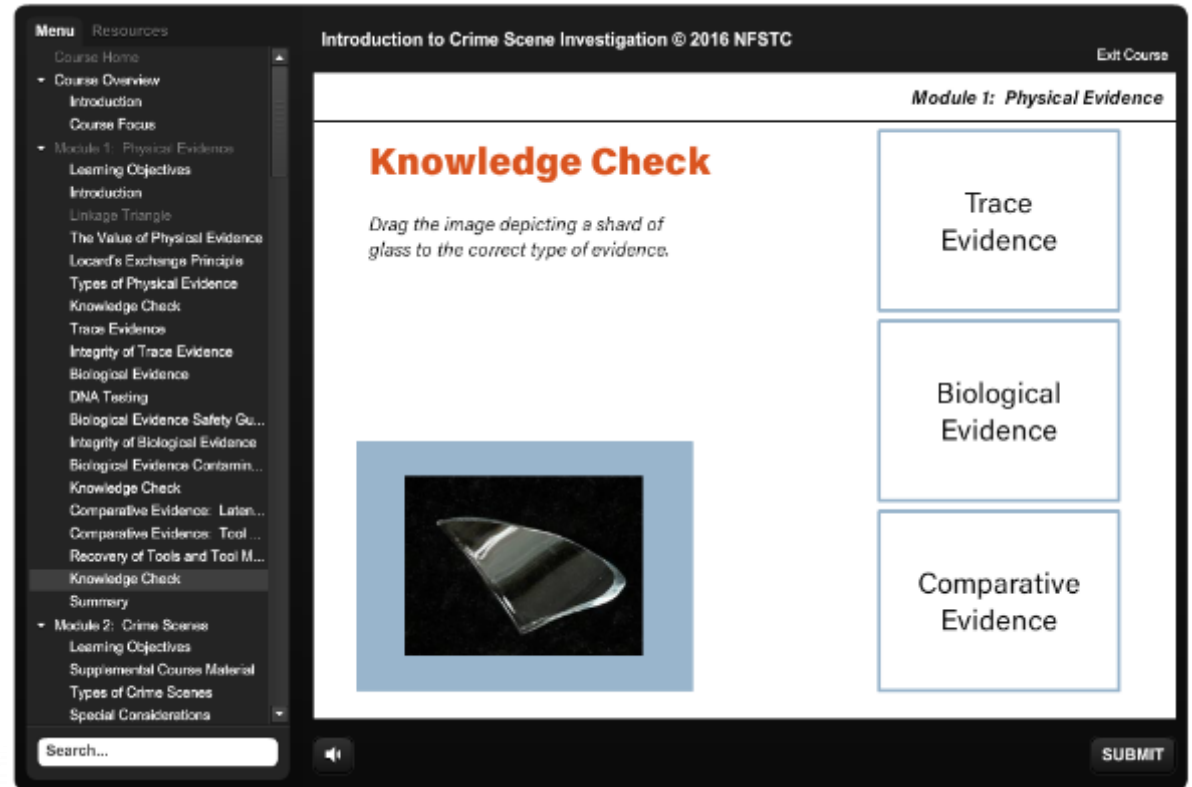
**Right Sidebar:** This area contains five interactive icons: a book icon, a computer monitor icon, a question mark icon, a gear icon, and an information icon. At the bottom right of the sidebar is a 'NEXT >' button.

# BLENDING LEARNING - CSI

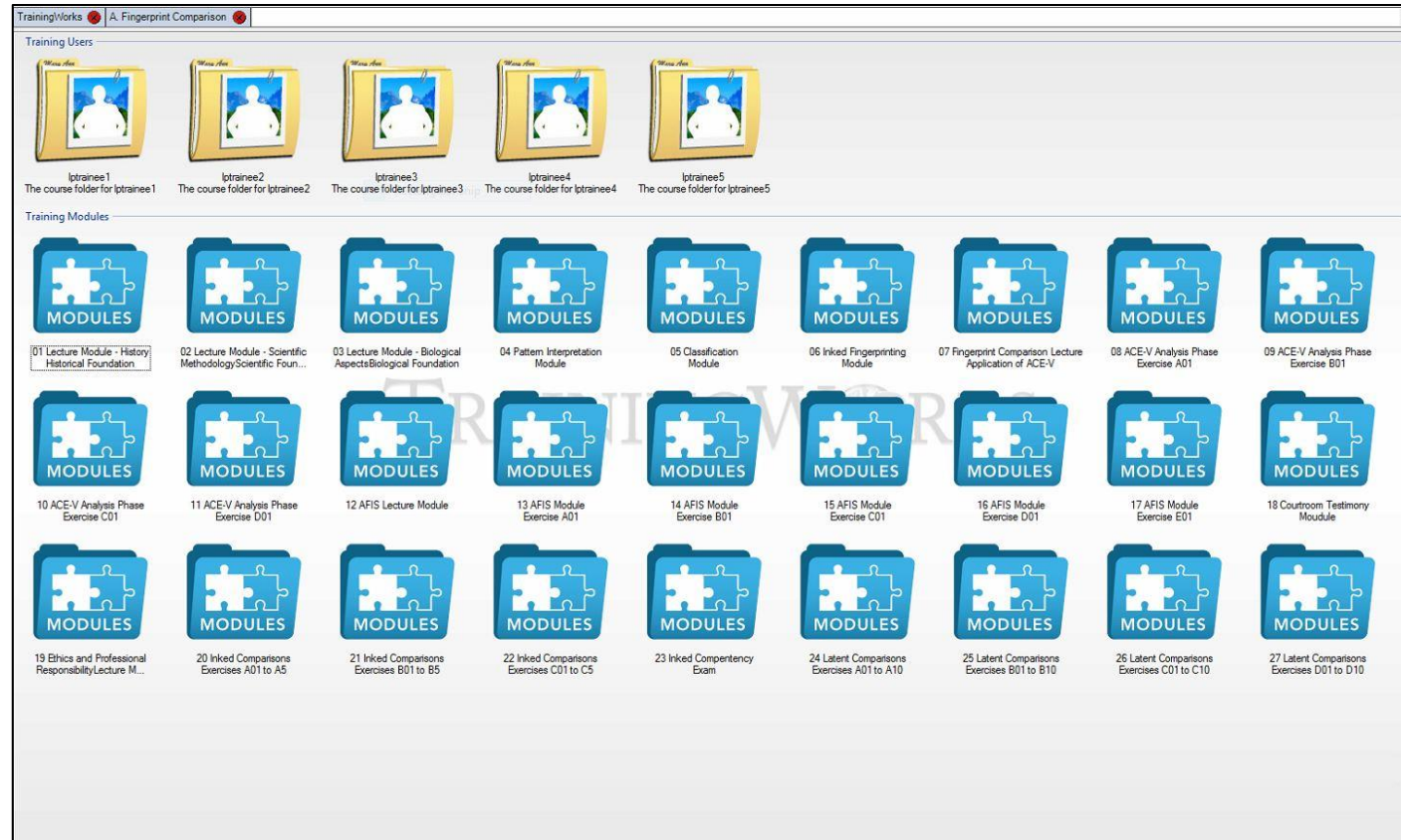


# BLENDED LEARNING IN PRACTICE

- Combines online learning with in-person, hands-on training
- Best elements of both
- Benefits:
  - Cost-effective
  - Efficient classroom time
  - Works for different learning traits
  - Customizable based on preferred outcome

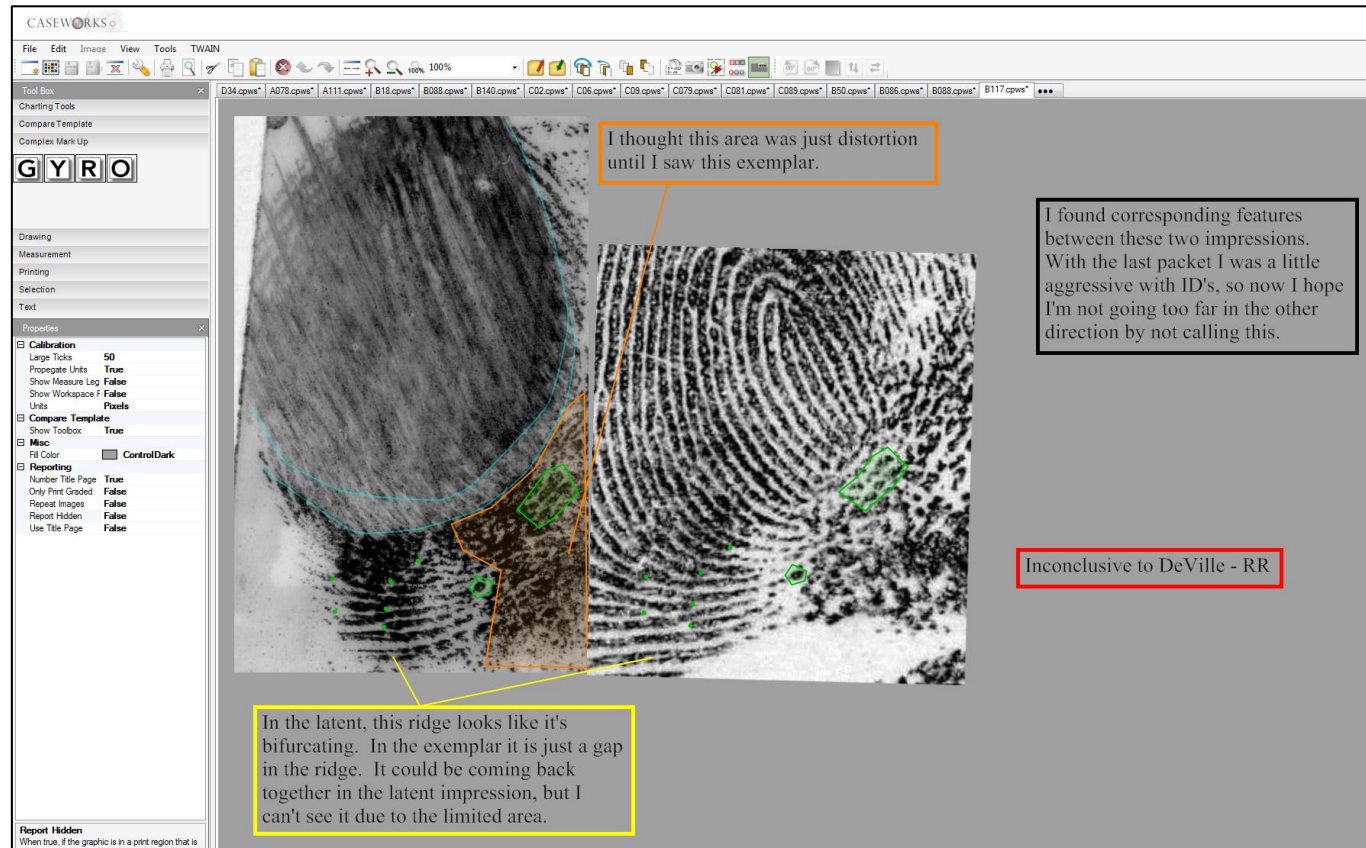


# BLENDED LEARNING - FINGERPRINT



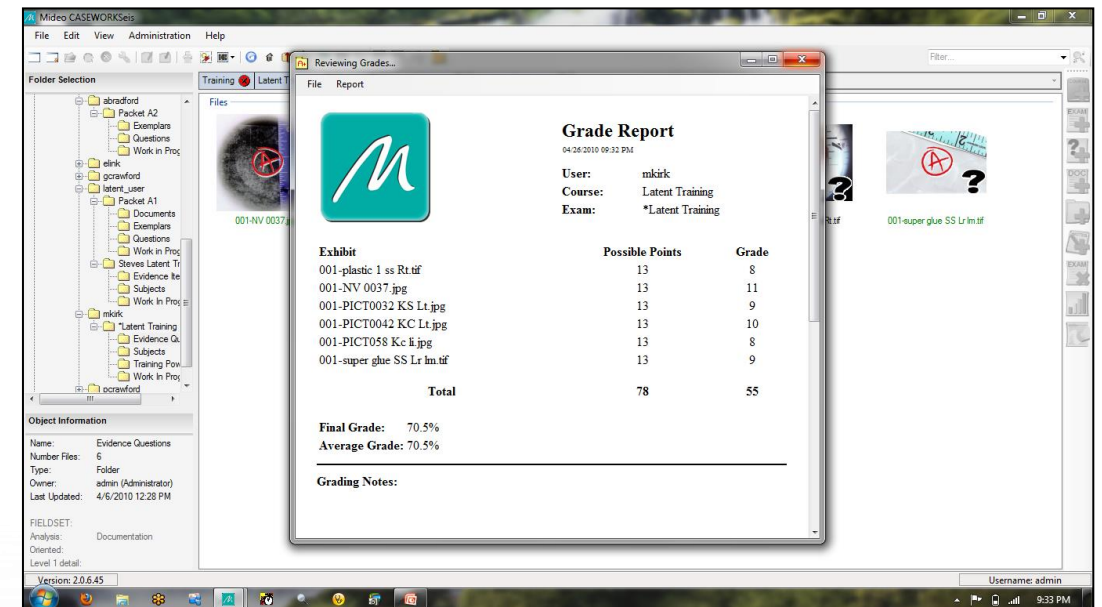
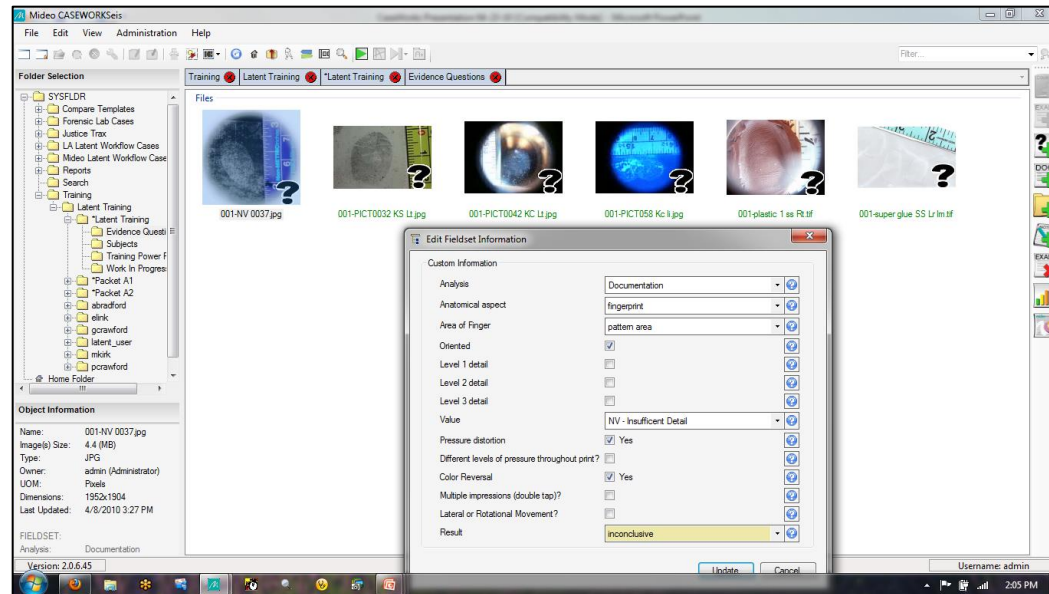


# BLENDED LEARNING - FINGERPRINT

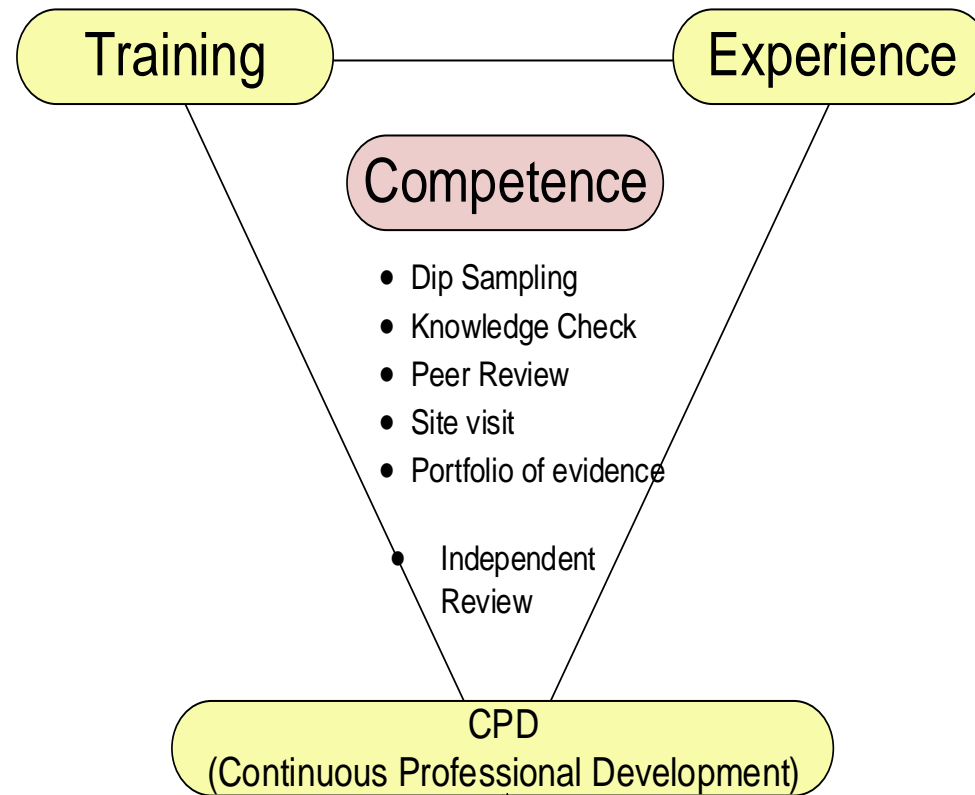




# BLENDED LEARNING - FINGERPRINT



# DEMONSTRATING COMPETENCE



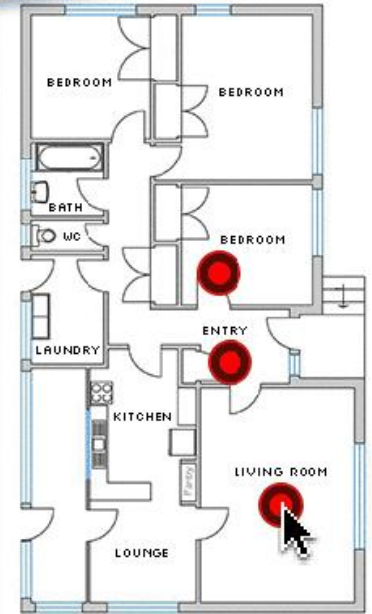
# COMPETENCY TESTING – CSI SKILLS



# DEMONSTRATING COMPETENCE



## Navigate the Crime Scene



# SUMMARY

- Blend best aspects of skills based training and e-learning
- Collaboration builds on complementary strengths
- University provides recognition and access to qualifications
- Model has been accepted by the KSA MOI
- Future developments include virtual reality crime scene for training and assessment



# LESSONS LEARNED – BENEFITS ANALYSIS

- Need for:
  - Complementary capabilities – synergy not duplication
  - Need patience and flexibility
  - Detailed trainer guides and lesson plans
  - Time for familiarisation
  - Client (standards) led not finance driven

# QUESTIONS?



NFSTC@FIU

8285 Bryan Dairy Road, Suite 125

Largo, FL 33777

(727)395-2511 | [www.nfstc.org](http://www.nfstc.org)

CPD

St Johns Rd, Meadowfield, Durham DH7 8ER

+44 7391 580406 [www.prodev-college.com](http://www.prodev-college.com)