

STATISTICS YEARS 7 AND 8

Mr Bloggs, the English teacher, had a class of 20 students. One day he gave them a spelling test and recorded the number of mistakes each student made. These were:

0 1 2 2 1 3 4 1 3 0 1 3 1 2 2 3 2 2 2 3

1 The mean number of spelling mistakes was:

- A 1 B 1.9 C 2 D 3

2 The mode is:

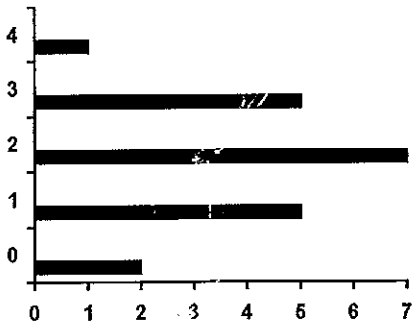
- A 1 B 2 C 3 D 4

3 Another word for the number of mistakes a certain student in the class made is:

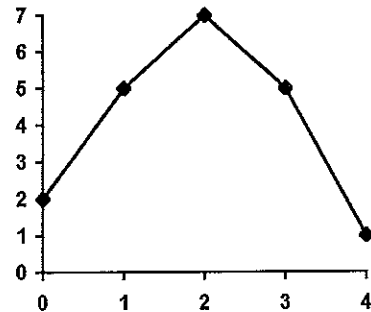
- A the frequency B the score
C the range D the tally

4 The line plot which might represent this information is:

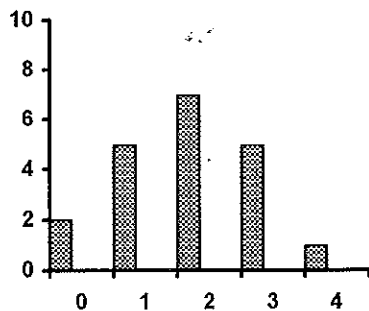
A



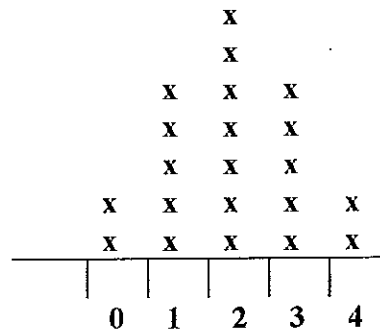
B



C



D

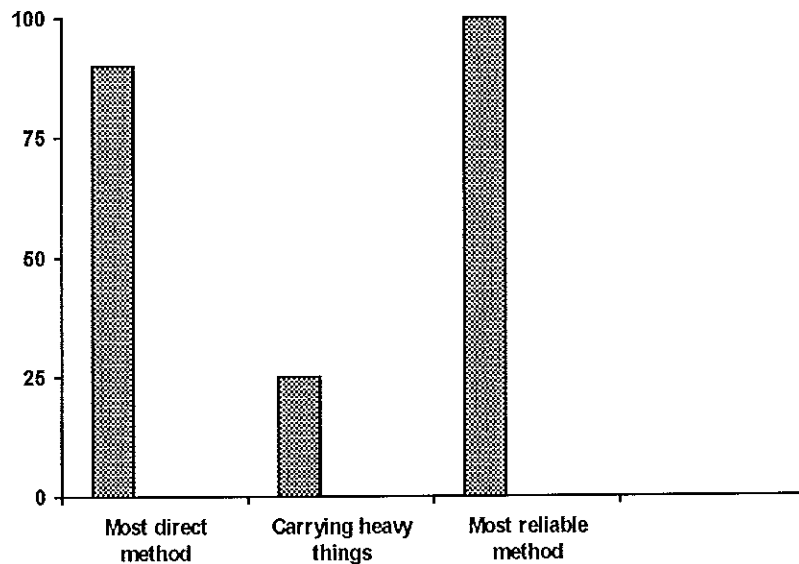


- 5 A series of 5 numbers, 2, 5, x, 8, 10 has a mean of 7. x must equal:
- A 6 B 7 C 8 D 10
- 6 The following frequency distribution table represents the number of complete books read by Year 9 students in the last month:

Score	Tally	Frequency
0		
1		
2		
3		m
4		
5		
6		
Total		n

The value of m and n are:

- A 7 and 28 B 6 and 30
 C 6 and 27 D 7 and 21
- 7 This is a graph of some of the reasons people gave in a survey for preferring driving a car to other forms of transport.



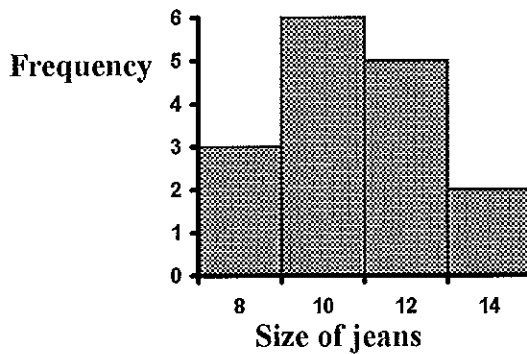
This graph shows that:

- A 100 people were asked altogether.
 B About 70 people don't have to carry heavy things.
 C Almost 3 times more people were more concerned about reaching their destination by a reliable way than about carrying heavy things.
 D Almost 4 times more people were more concerned about reaching their destination along a direct route than about carrying heavy things.

8 A group of students wanted to convince their local Council to build an overpass over an extremely busy road near their school. To back up their submission they decided to do a traffic survey. Which one of the following proposals suggested by different students would give the most reliable results for their submission?

- A Count the number of cars down the busy road the next morning before school.
- B Count the number of cars crossing a line across the busy road between 8 am and 9 am and 3 pm and 4 pm each school day for the next 3 weeks.
- C Count the number of cars passing in front of the school for 1 hour during peak hour both morning and night for the next 7 days.
- D Count the number of cars crossing a line on the busy road for an entire day 7 am to 6 pm.

THE NEXT 3 QUESTIONS REFER TO THE FOLLOWING INFORMATION:



The histogram represents different size jeans sold at a big end of season sale.

9 The total number of people in the survey was:

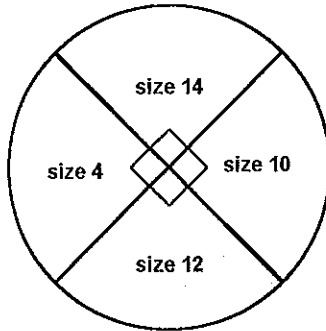
- A 6
- B 14
- C 16
- D unable to be determined from this graph.

10 The mode was:

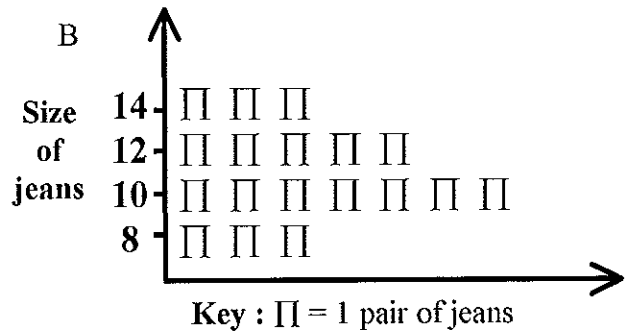
- A size 8
- B size 10
- C size 12
- D size 14

11 Which of the following is an accurate alternative representation of the data in the histogram?

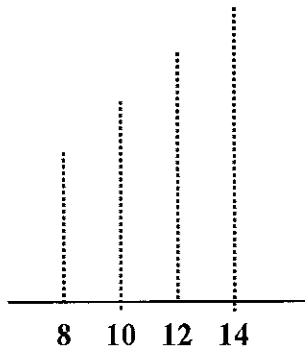
A



B



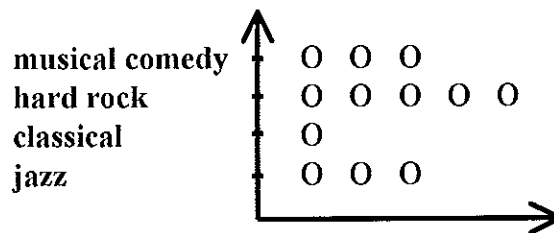
C



D

Score	Percentage Frequency
8	30
10	60
12	50
14	20

12 The following picture graph represents a survey of 360 students, who were given a choice of 4 types of music and were asked which one they preferred:

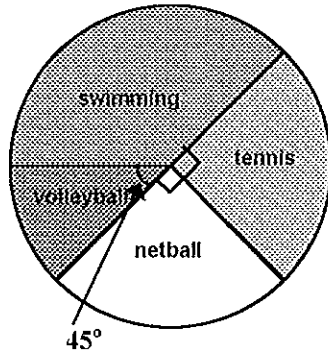


Which statement is NOT true?

- A Each circle must represent 30 students.
- B Jazz was 3 times more popular than classical music.
- C Two more people preferred hard rock than preferred jazz.
- D Hard rock was the most popular style of music.

THE NEXT 3 QUESTIONS REFER TO THE FOLLOWING INFORMATION:

This is a sector graph (pie chart) drawn from a survey of 120 students showing their preferred summer sport.



13 The number of students who chose tennis was:

- | | | | |
|---|----|---|-----|
| A | 30 | B | 60 |
| C | 90 | D | 108 |

14 The fraction of students who chose swimming was:

- | | | | |
|---|---------------|---|----------------|
| A | $\frac{1}{4}$ | B | $\frac{3}{8}$ |
| C | $\frac{4}{5}$ | D | none of these. |

15 The percentage of students who selected netball was:

- | | | | |
|---|-----------------|---|-----|
| A | $\frac{1}{4}\%$ | B | 25% |
| C | 30% | D | 90% |

16 The only meaningful kind of "average" for this kind of survey is:

- | | | | |
|---|----------|---|---------------|
| A | the mean | B | the median |
| C | the mode | D | none of these |

ANSWERS TO STATISTICS – YEARS 7 & 8

1	B	2	B	3	B	4	D	5	D	6	A
7	D	8	B	9	C	10	B	11	B	12	C
13	A	14	B	15	B	16	C	17	C	18	D
19	C	20	B								