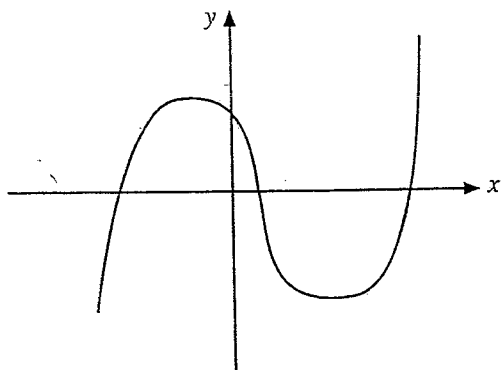


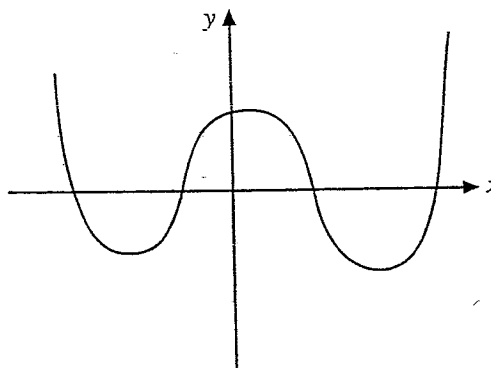
## 2.25 GRADIENT FUNCTIONS

Sketch the gradient (tangent) function of each graph:

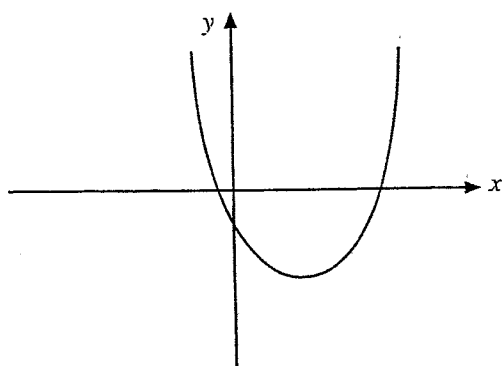
1.



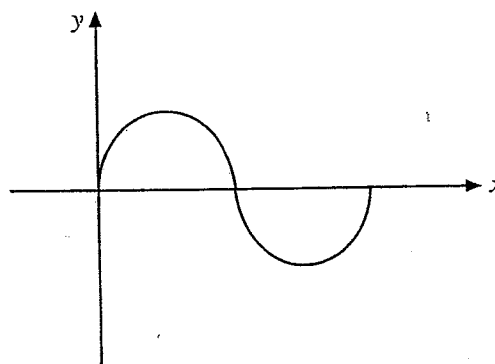
4.



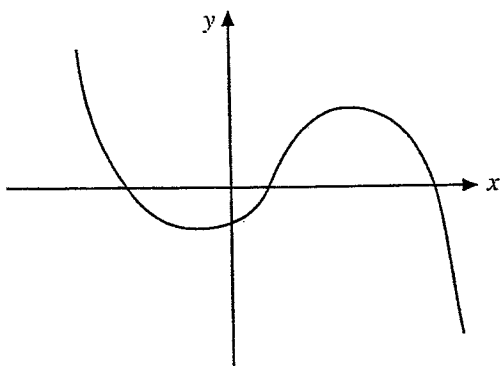
2.



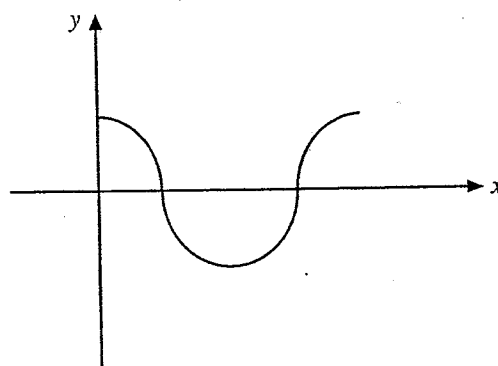
5.



3.

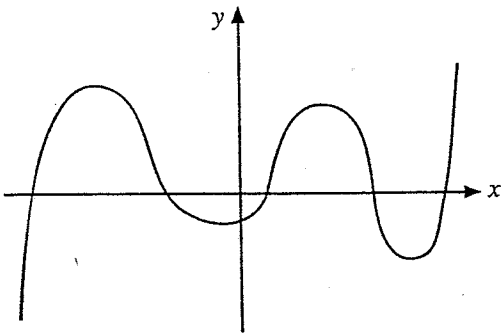


6.

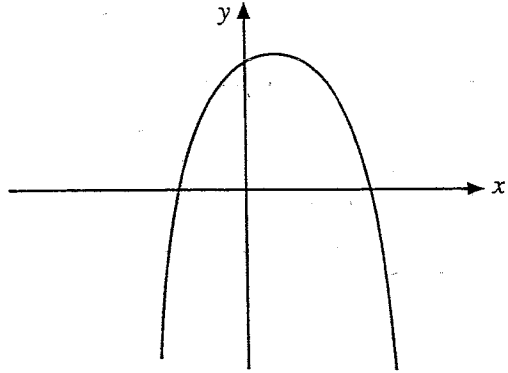


## 2.25 GRADIENT FUNCTIONS continued

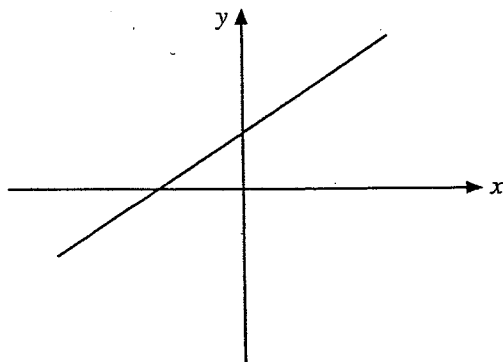
7.



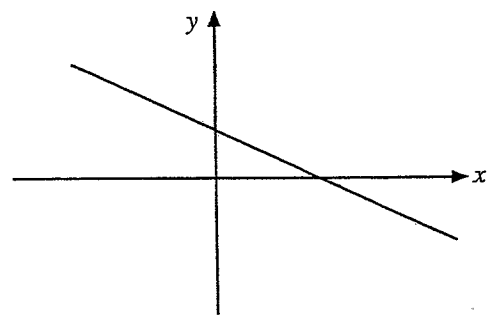
11.



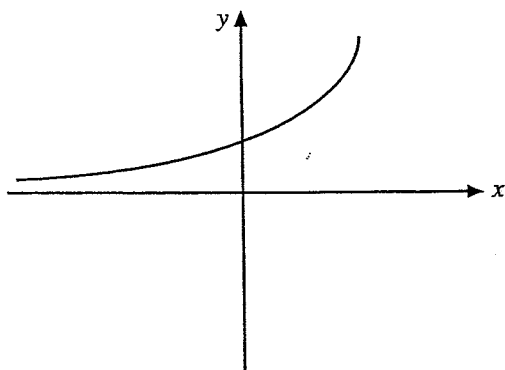
8.



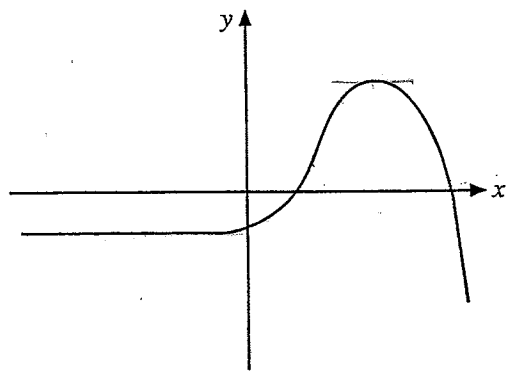
12.



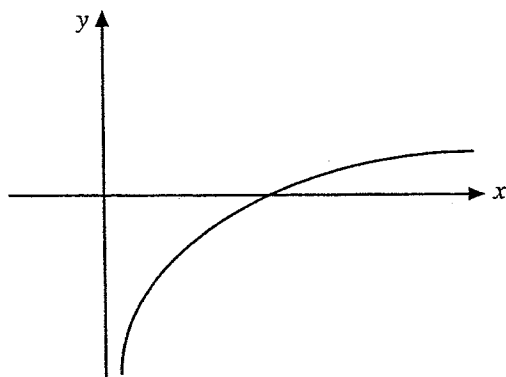
9.



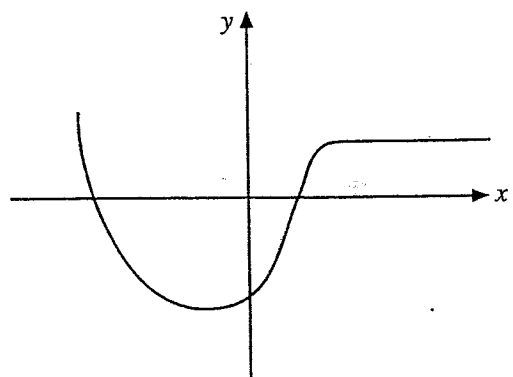
13.



10.



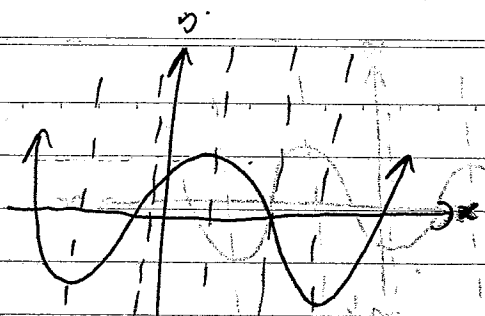
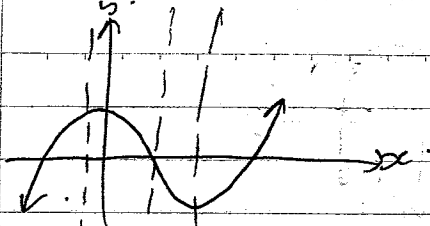
14.



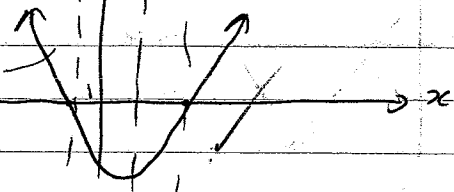
# GRADIENT FUNCTIONS.



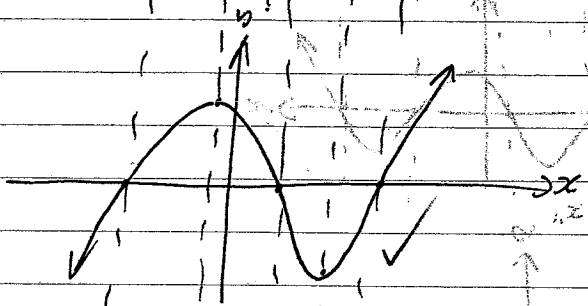
1.



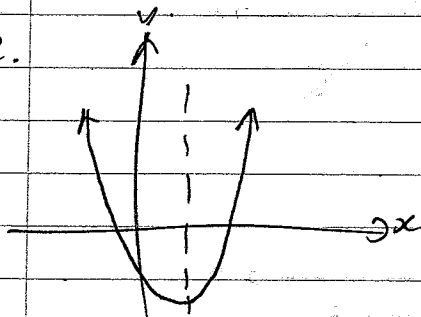
+



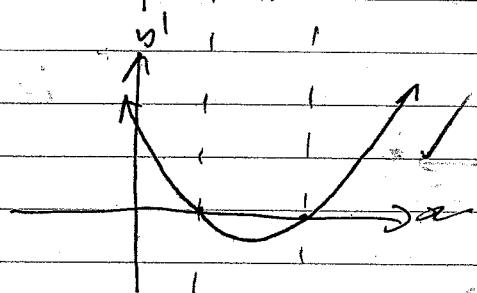
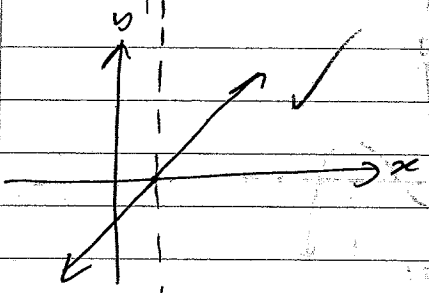
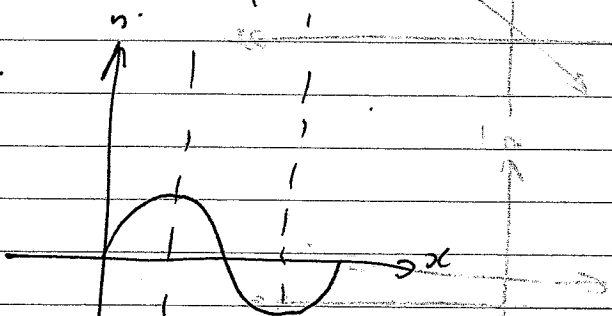
-



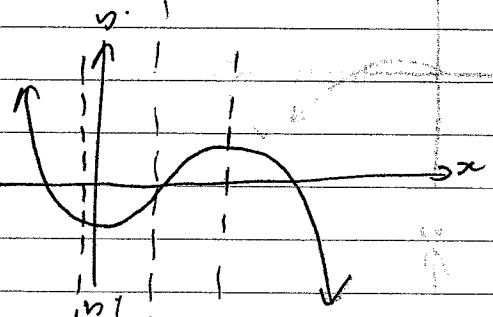
2.



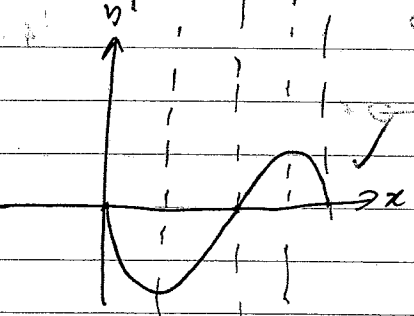
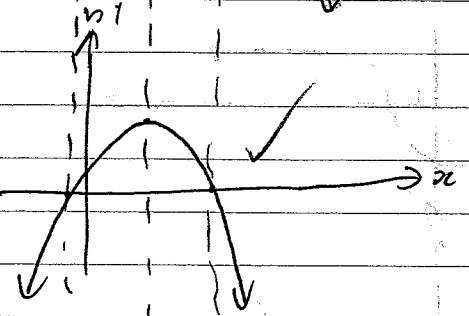
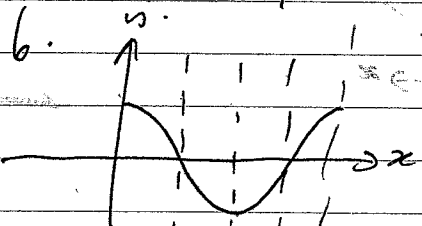
5.



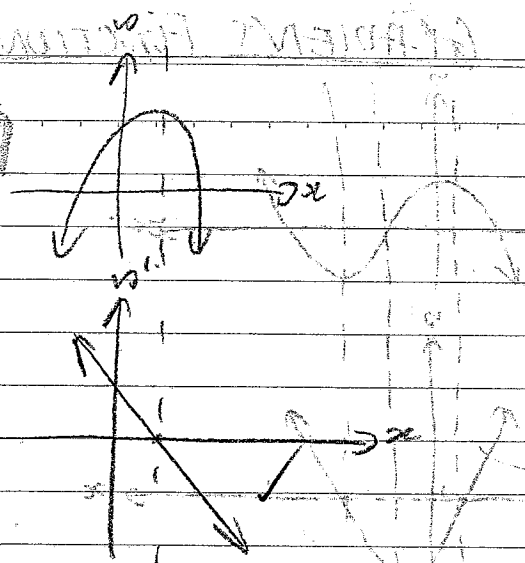
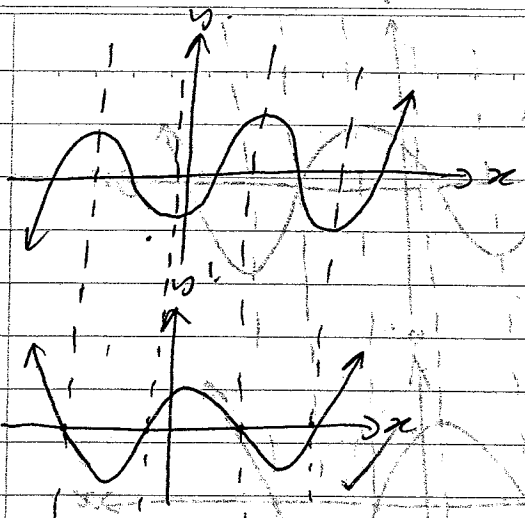
3.



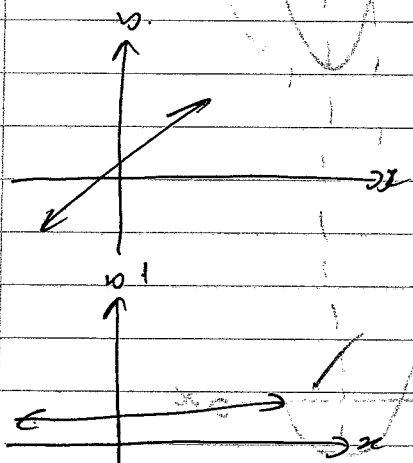
6.



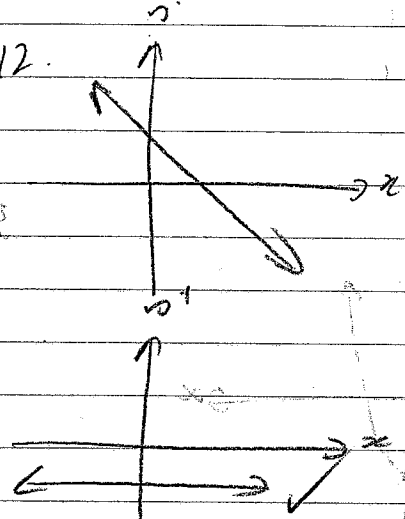
7.



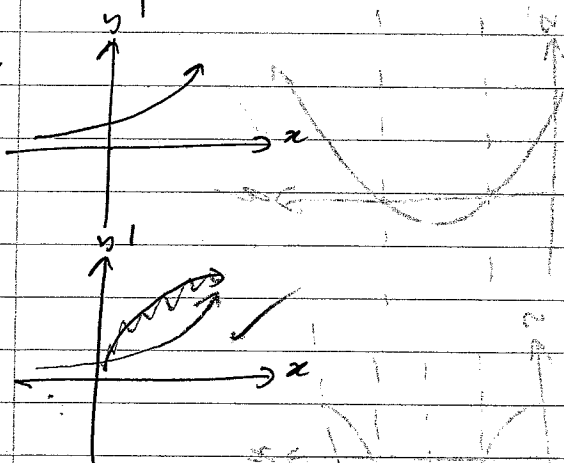
8.



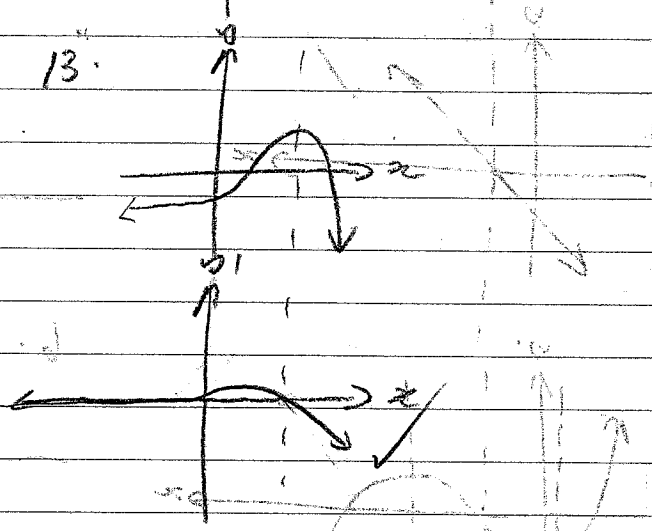
12.



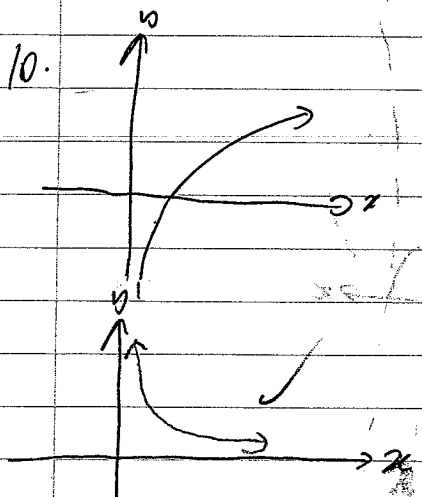
9.



13.



10.



14.

