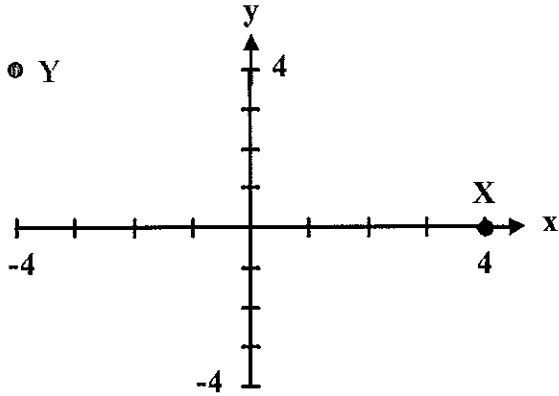


GRAPHS YEARS 7 AND 8

1



The co-ordinates of the points X and Y are:

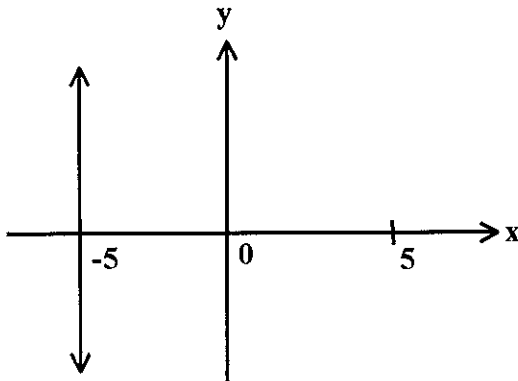
- A (0, 4) and (4, -4)
- B (4, 0) and (4, -4)
- C (0, 4) and (-4, 4)
- D (4, 0) and (-4, 4)

2. The number needed to complete the table of values if the rule is $y = 3x + 4$ is:

x	-2	0	6
y		4	22

- A -2
- B -14
- C 2
- D -10

3



The rule of the graph shown is:

- A $x + y = -5$
- B $y = -5$
- C $x = -5$
- D $y = x - 5$

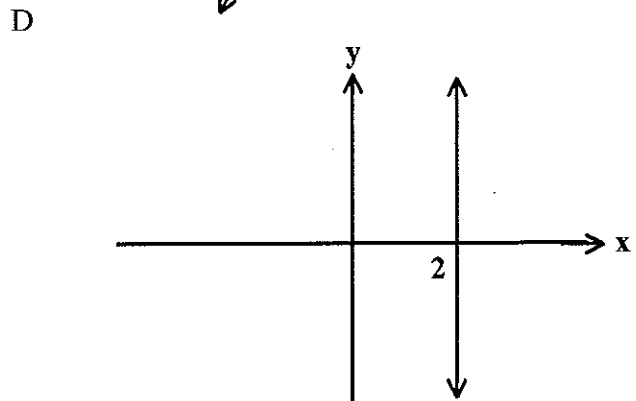
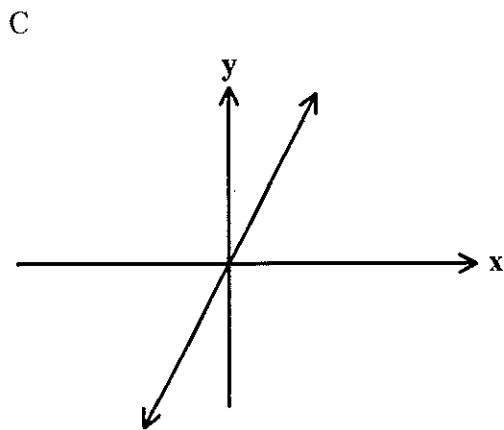
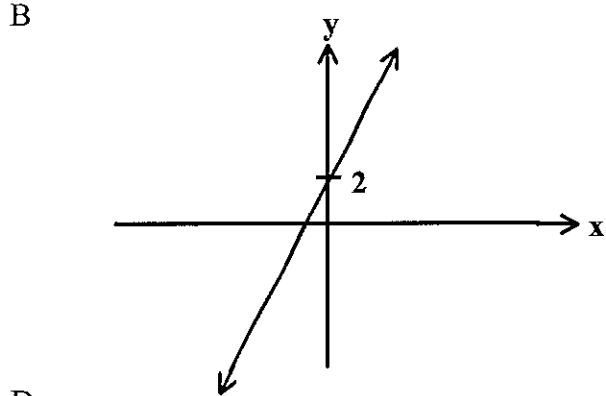
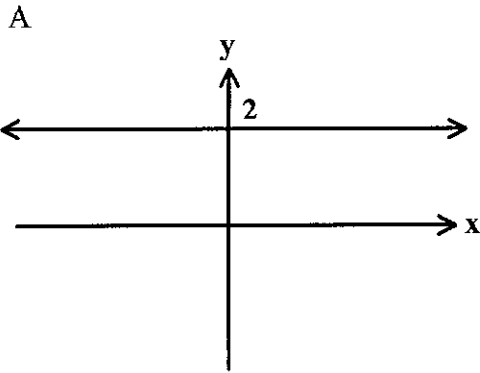
4. Which one of the following points obeys the rule $y = 3x$?

- A (0, 0)
- B (5, 8)
- C (24, 8)
- D (3, 1)

5. The point (2,6) is on all but one of the following graphs. Which one is it?

- A $y = x + 4$
- B $x = 2$
- C $x = 6$
- D $y = 3x$

6. Which one of the graphs might represent the rule $y = 2x$?



7. What might be the rule which leads to this table of values?

x	0	1	2	3
y	3	6	9	12

A $y = x + 3$

B $y = 6x$

C $y = x + 5$

D $y = 3x + 3$

8. The rule of the y axis is:

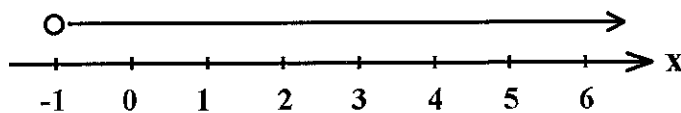
A $x = 0$

B $y = 0$

C $y = x$

D An axis does not have a rule.

9



The rule of this graph is

A $x < -1$

B $x \leq -1$

C $x > -1$

D $x \geq -1$

10. Which one of the following lines will be a vertical line?

A $y = 4$

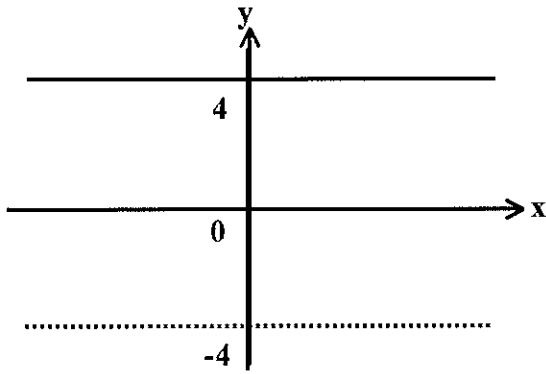
B $y = 100x$

C $x = -10$

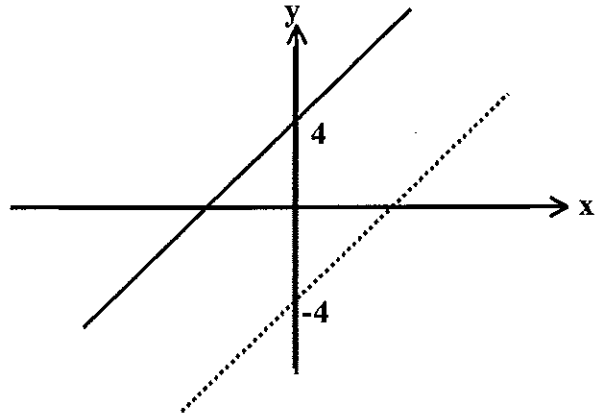
D $y = 3x - 3$

11 If $y = 4x$ (unbroken line) is drawn on the same axes as $y = -4x$ (dotted line), then they might look like:

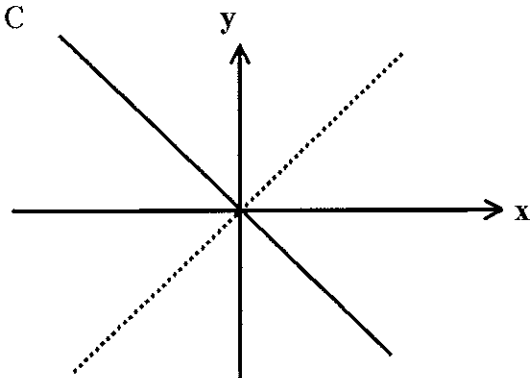
A



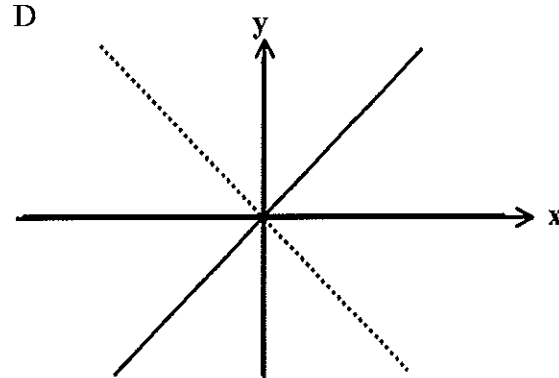
B



C

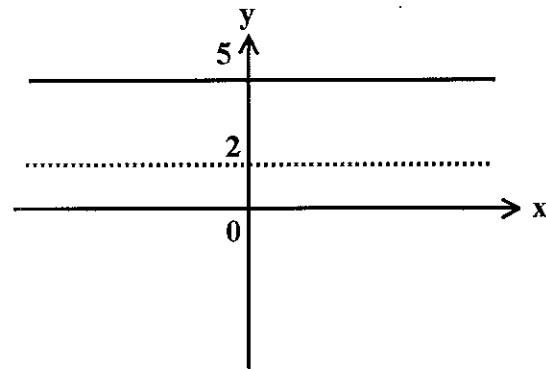


D

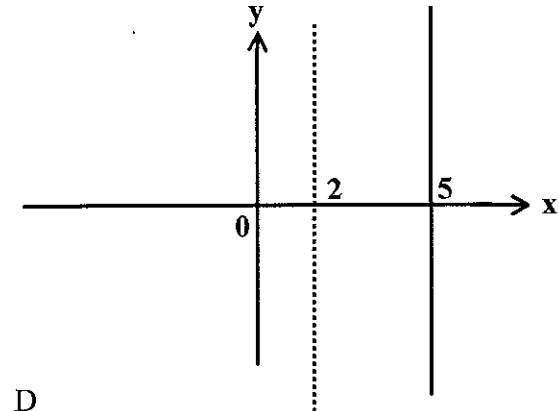


12 If $y = 5x$ (unbroken line) is drawn on the same axes as $y = 2x$ (dotted line) then they might look like:

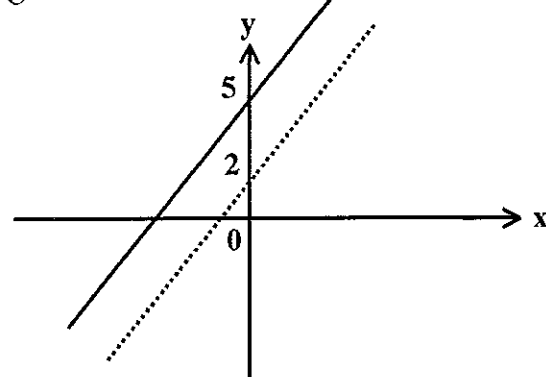
A



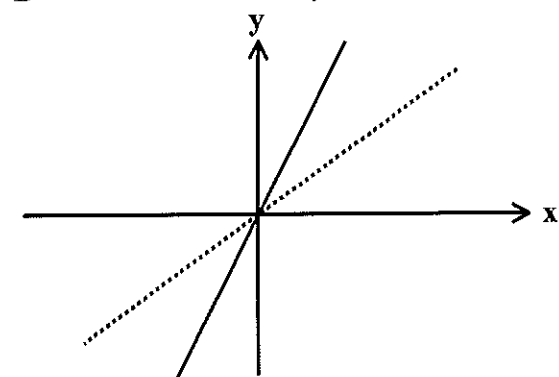
B



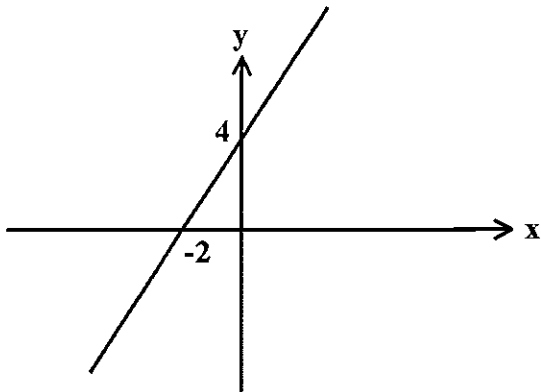
C



D



13

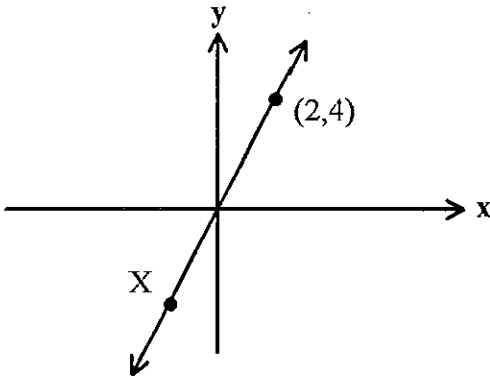


The rule of this graph might be:

- A $y = 4x$
- C $y = 2x + 4$

- B $y = 4x - 2$
- D $y = -2x + 4$

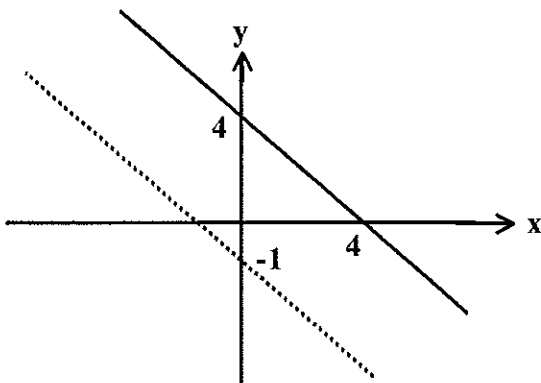
14



The co-ordinates of x might be:

- A $(-2, -1)$
- B $(-1, -2)$
- C $(-\frac{1}{2}, -\frac{1}{4})$
- D $(-1, -1\frac{1}{2})$

15



The rule of the dotted line, which is parallel to the unbroken line, might be:

- A $y = x - 1$
- B $y = -x - 1$
- C $y = -4x - 1$
- D There is insufficient information to determine the equation of this line.

16. Which one of these graphs will cross the y - axis at 6?

- A $y = 6x$
- C $y = x + 6$
- B $x = 6$
- D $y = 3x + 3$

17 Which one of these graphs will be the steepest, if all the graphs are drawn on the same axes:

- A $y = 2x$
- C $y = 200$
- B $y = x + 100$
- D $y = x - 400$

21 Which one of the following statements is INCORRECT?

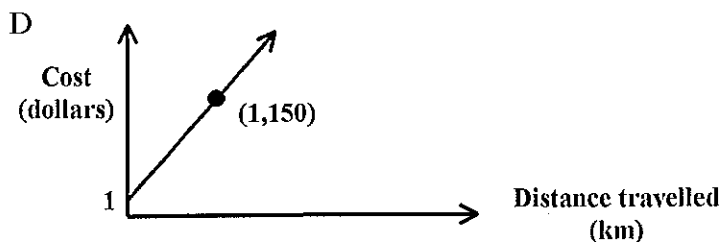
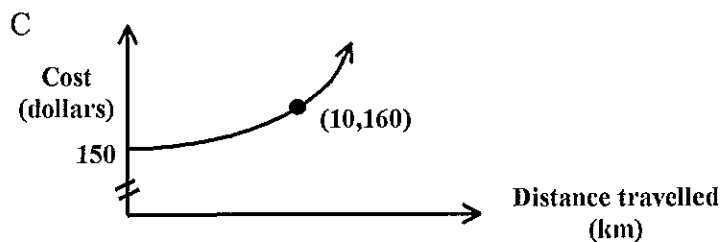
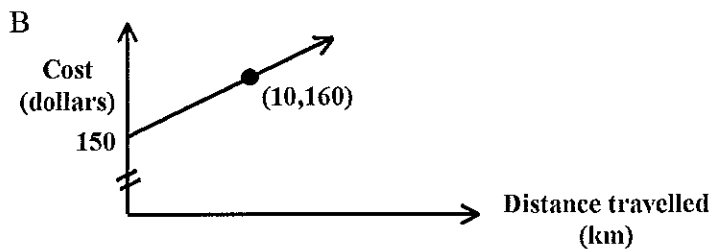
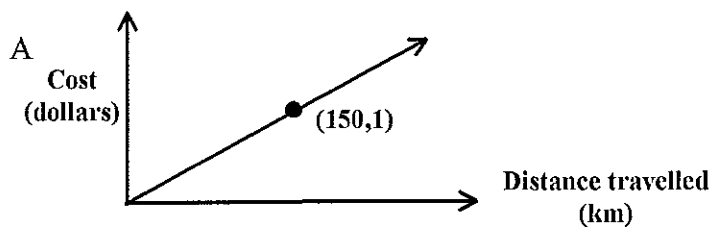
- A Gita's average speed over her trip was 4 kph.
- B Gita ran more slowly on the journey back to the centre than at the other stages.
- C When Tori and Gita met, Tori was running along another road towards the East.
- D Tori only went 2 km and was still resting along the road when Gita saw her.

22 The rule of certain graph is: $y = 5x - 10$

Which statement about this graph is TRUE?

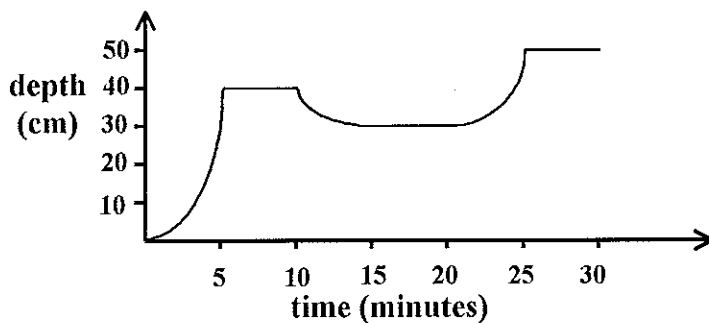
- A The point (5, -10) will be on the graph.
- B The graph will be parallel to the graph $y = x - 10$, if drawn on the same axes.
- C The graph will cross the y - axis at 5.
- D The graph will cross the x - axis at 2.

23 If you go on a holiday to the Whitsundays, you can hire a car at a certain place for \$150 initial costs, plus \$1 per km travelled. The graph which might represent the relationship between the cost and the distance you drive is:



THE NEXT 2 QUESTIONS REFER TO THE INFORMATION BELOW:

This graph represents the depth of water in a bath over time.



24 In the first 5 minutes:

- A The empty bath was filled at a faster and faster rate, by turning the tap on more and more to speed it up.
- B The bath was filled at a steady rate, like 20 litres per minute, until it was at the required depth.
- C The tap was turned full on to start with, then gradually turned off as the water got close to the top.
- D You can't tell how the bath was filled without also knowing the shape of the bath.

25 An explanation for the rest of the graph could be:

- A Someone in the bath started splashing a lot, to make bigger and bigger waves.
- B Someone got out and was replaced with someone bigger.
- C Someone got out and was replaced with someone smaller.
- D Water was let out, but the bath then was filled to overflowing.

