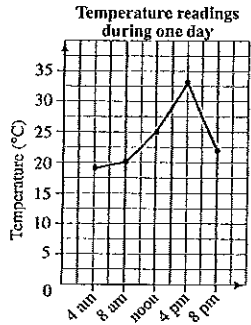
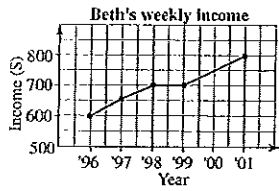


Q 1.



- (a) What was the maximum temperature for the day?
- (a) What was the minimum temperature for the day?
- (a) What is the difference between maximum and the minimum temperatures?

Q 2.



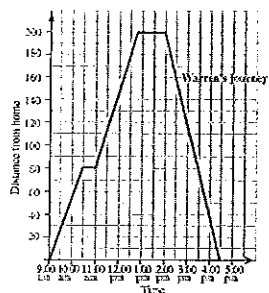
- (a) What was Beth's weekly income in 1996?
- (b) In which 2 years did her income stay the same?
- (c) By how much had Beth's income increased over the period from 1996 to 2001?

Q 3.

Number of car thefts in Melbourne over 6 months						
Month	Jan	Feb	Mar	Apr	May	Jun
No. of car thefts	30	32	28	22	17	25

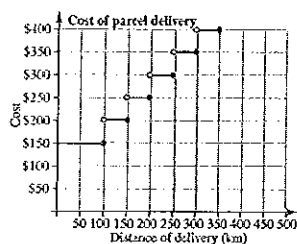
- (a) Construct a line graph to display the data.
- (b) During which month were there the greatest number of car thefts?
- (c) During which month were there the least number of car thefts?

- Q 4. Warren is a courier and the figure below shows the journey made to deliver a parcel.



- At what time did Warren stop on the way?
- How far from home was the Warren's destination?
- How long did Warren stay at his destination?
- What was Warren's average speed on the return journey?

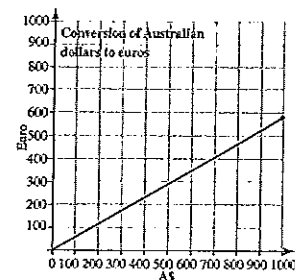
- Q 5. The step graph below shows the cost of having Warren deliver a parcel.



- What would be the cost of having a parcel delivered a distance of 350 km?
- What is the maximum distance that I can have a parcel delivered for \$300?
- What would be the total cost of having two parcels delivered, one a distance of 220 km and another of 340 km?

- Q 6. The conversion graph below shows the conversion of Australian dollars to Euros.

- David has \$A600. How many Euros can David exchange this for?
- Fiona returns from holidays with 200 Euros. How many Australian dollars can this be exchanged for?



- Q 7.

Month	1	2	3	4	5	6
Sunrise (am)	6.00	6.10	6.12	6.17	6.20	6.30
Sunset (pm)	8.30	8.23	8.16	8.13	8.05	8.00

Planet Zorrone has very, very long years. The table above shows the time of sunrise and sunset over 6 months on this planet.

- What was the time of sunrise in month 4?
- What is the difference between the times the sun set in months 2 and 5?
- Would you expect the time of sunrise to be earlier or later in month 7 compared with month 6?

8.

The world's max. and min. temperatures		
City	Max. °C	Min. °C
Athens	14	2
Auckland	25	19
Bangkok	33	25
Beijing	4	-5
Cairo	15	11
Hong Kong	14	12

- Which city had the lowest minimum temperature?
- Which city had the highest maximum temperature?
- Which city had the smallest range between maximum and minimum temperature?

9.

Mortgage Rates (fixed rates %)			
Institution	1-yr term	3-yr term	5-yr term
AMP	6.10	6.40	6.85
ANZ	5.95	6.35	6.65
Bank of Melbourne	6.10	6.35	6.65
Commonwealth	6.25	6.45	6.65
St. George	6.25	6.45	6.65

The table above shows the mortgage rates for a number of banking institutions.

- Which institution is the odd one out in a 5-year term?
- Which banks have common 3-year term rates?
- Which bank has 5.95% as a fixed rate?

10. The table below shows a bus route

	Service A	Service B	Service C
Hasna Rd	9.05	9.35	10.10
Carnegie St	9.11	-	10.15
Bradshaw Ave	9.15	9.43	-
Specular Dr	9.22	9.49	-
Marouch Rd	9.29	9.55	-
Marbine Station	9.45	10.10	10.45

- If I catch service B from Specular Dr what time will I arrive at Marouch Rd?
- How much quicker is the trip on Service C than Service A?
- Karly lives 12 minutes walk from the Bradshaw Ave bus stop. She has an appointment with her doctor at 10.15. The doctor's surgery is 8 minutes walk from Marbine Station. What is the latest time that Karly can leave home to arrive on time for her appointment?