

Q1. The following table shows the results of a survey on Australian households on how often they perform their grocery shopping:

| Frequency of shopping | % of households |
|-----------------------|-----------------|
| Monthly | 2 |
| Fortnightly | 11 |
| Weekly | 52 |
| Three times a week | 8 |
| Twice a week | 19 |
| Daily | 6 |
| Other | 2 |

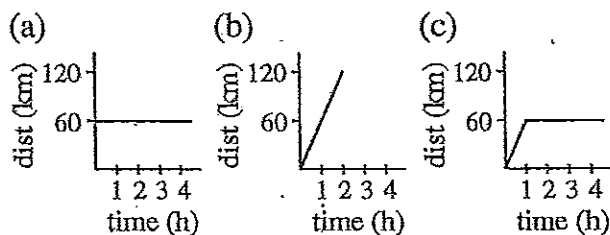
Draw a column graph to represent the information.

Q2. A department store recorded the sales for each of its departments on one particular day. The results were as follows:

| Department | \$ sales |
|-----------------------|-----------|
| Clothing | 6125.00 |
| Household goods | 9800.00 |
| Toiletries and beauty | 3062.50 |
| Toys | 4900.00 |
| Stationery | 612.50 |
| Total: | 24 500.00 |

Illustrate the information by means of a sector graph.

Q3. Which of the graphs to the right best describes the distance travelled by a car that is moving at 60 km/h?

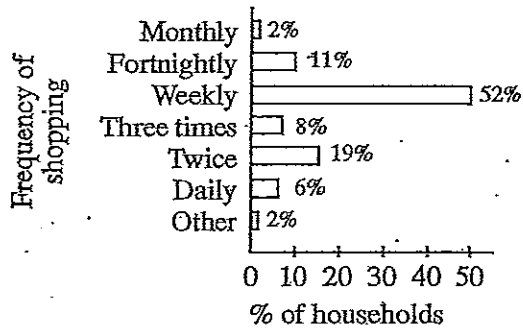


Q4. A girl leaves her home A at 9 a.m., and after cycling for 25 km at 5 km/h she reaches her destination, B, at 2 p.m. After having lunch in B for 90 minutes, she sets off for home. On the way home she stops for half an hour to see a friend who lives in C. C is 10 km from A. At 5:30 p.m. she leaves C and cycles until she reaches home at 7 p.m.

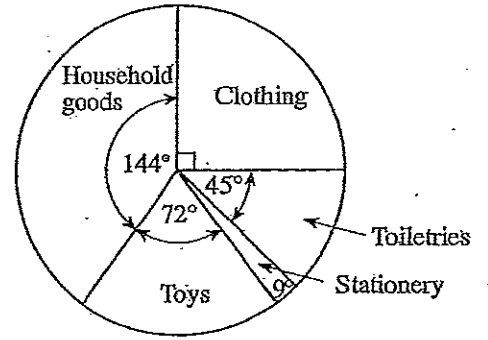
- (a) Draw a travel graph to show the girl's journey.
- (b) What was the girl's speed from B to C?
- (c) What was her speed from C to home?

Level 4 — Graphs (ANSWERS)

Q1.

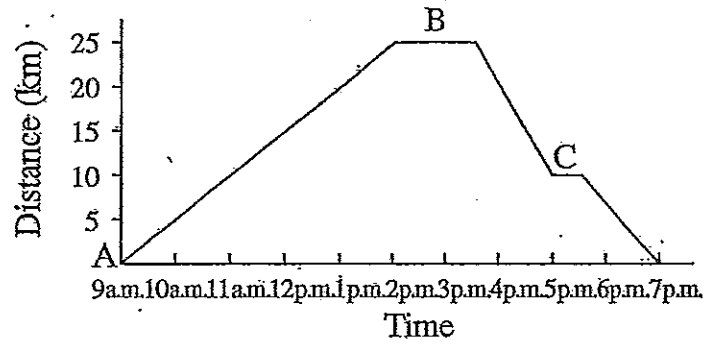


Q2.



Q3. (b)

Q4. (a)



(b) 10 km/h

(c) 6.7 km/h