

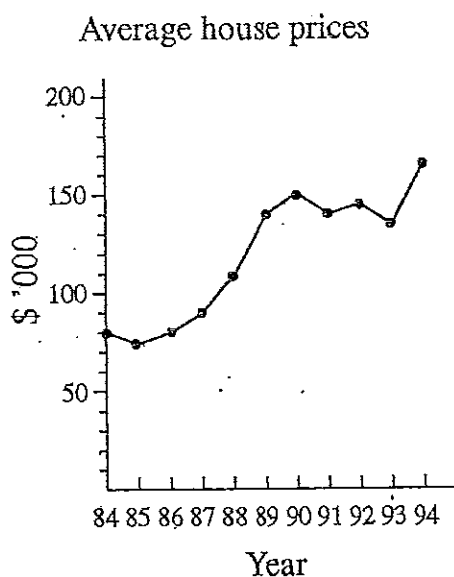
Note: Only turn back to page number if you have difficulty

Q1. The table below shows the number of people employed on various kinds of work in a small business:

Type of personnel	Number employed
Factory workers	32
Draughtsmen	12
Clerical and accounting	8
Management and sales	8

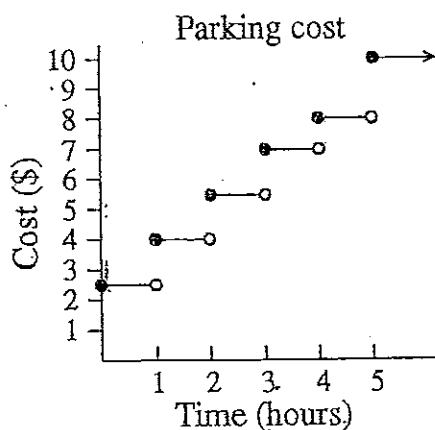
Illustrate the above information in a bar graph of total length 15 cm.

Q2. The line graph below shows the movement of average house prices in Melbourne over a 10 year period (1984 – 1994).



- (a) What was the average house price in 1984?
- (b) What was the increase in house prices from 1985 to 1990?
- (c) What was the net decrease in prices between 1990 and 1993?
- (d) In which year was the average price of a house \$145 000?
- (e) Over the ten year period, by how many percent has the price increased?

Q3. Parking costs for an inner city parking station are shown in the step graph below:



- (a) What is the cost of parking for 1 hour?
- (b) What is the cost of parking for 2 hours and 58 minutes?
- (c) How long can the car be parked if the cost is to be \$8 or less?
- (d) How much is the cost of parking 5 hours or more?

Level 2 — Graphs (ANSWERS)

Q1.

Factory workers	Draughtsmen	Clerical	M'ment
-----------------	-------------	----------	--------

- Q2. (a) \$80 000      (b) \$75 000      (c) \$15 000      (d) 1992      (e) 112.5%
- Q3. (a) \$4.00      (b) \$5.50      (c) up to 5 hours      (d) \$10