

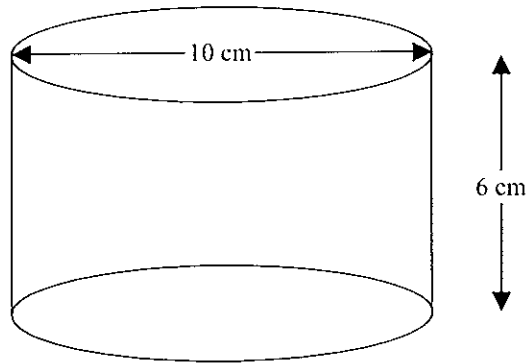
Year 10 Advanced - Topic Test - Measurement II

Name: _____ Time Allowed: 50 minutes

Answer each question on the separate paper provided

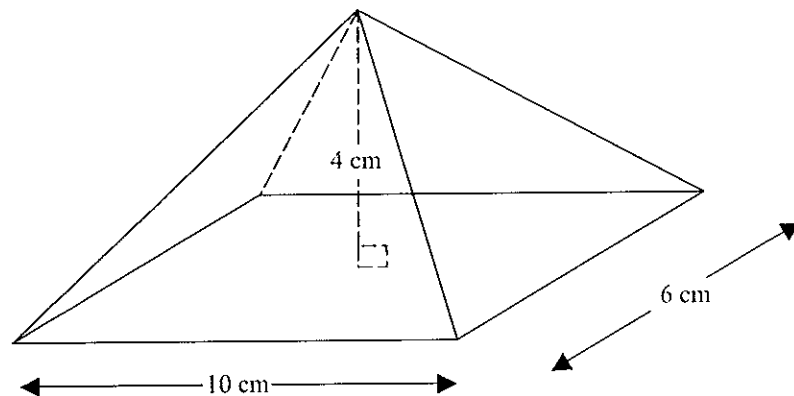
Question 1

Find the surface area of the following cylinder. Answer correct to 1 decimal place.



Question 2

Calculate the surface area of the following pyramid. Give your answer correct to 1 decimal place.

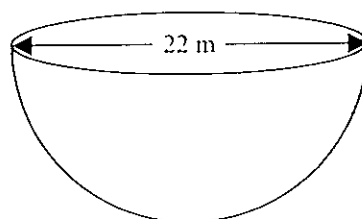


Question 3

Calculate the surface area of a cone with radius 8 cm and height 6 cm. Give your answer in terms of π .

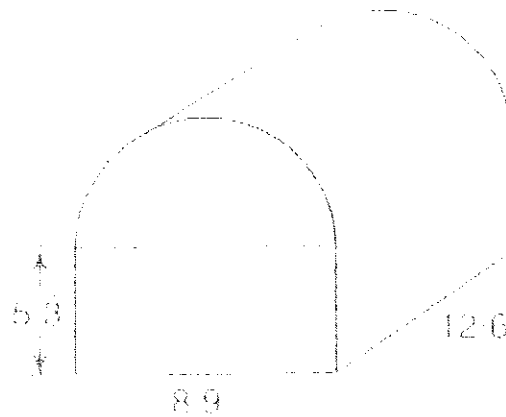
Question 4

Calculate the surface area of the following closed hemisphere correct to 2 decimal places.



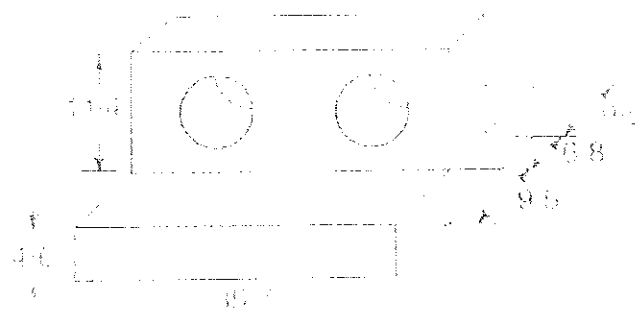
Question 5

Calculate the volume of the following prism, giving your answer correct to 1 decimal place. Measurements are in centimetres.



Question 6

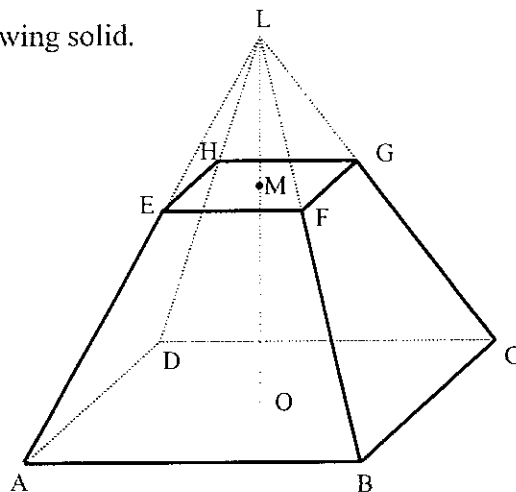
Calculate the volume of the following solid. Measurements are in centimetres and your answer is to be given correct to 1 decimal place



Note: Both circular holes have a diameter of 8.5 cm.

Question 7

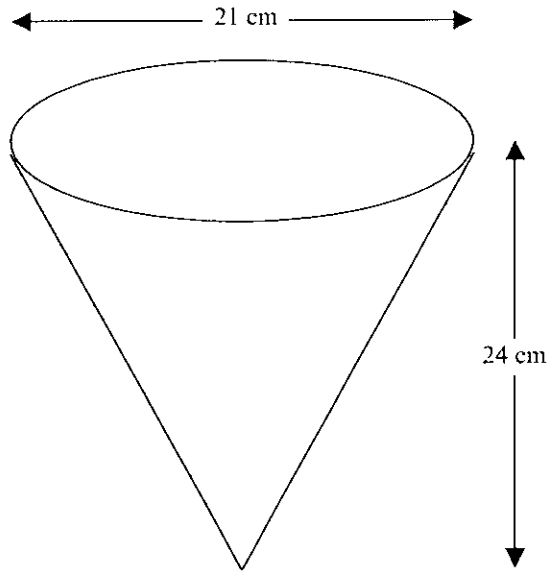
Calculate the volume of the following solid.



ABCD and EFGH are squares. $AB = 20$ cm, $EF = 10$ cm, $MO = 15$ cm, $LM = 15$ cm.

Question 8

Find the volume of the following cone. Leave your answer in π form.



Question 9

Calculate the volume of a concrete beam which has the cross section shown in the diagram. The beam is 10 m long. **Also** calculate the mass of this beam if 1 m^3 of concrete weighs 2.5 tonnes.

