

HAND in your solutions of A4 paper.
Write neatly and staple your pages together

1. Solve for x :

(a) $\frac{3}{2 - \frac{x}{2}} = 2$ (b) $2x^2 + 5x = 2$ (c) $(x+5)(x+6) = 42$

2. Sketch the solutions to the following on separate number lines.

(a) $2\frac{1}{3} \leq \frac{2+3x}{2}$ (b) $|5x-9| > 21$ (c) $2x^2 - 7x < 0$

(d) $\frac{2}{x-1} \geq 4-x$

3. (a) Show that $x^2 + 2x + 5 = 0$ has no solution. quadratic

(b) Find the average of the roots of the equation
 $2x^2 + 14x + 17 = 0$

(c) Solve $t^4 + 2t^3 - 8t - 16 = 0$

(d) Solve $\frac{2}{x-1} - \frac{1}{x+1} = 1$

4. In the right angled triangle ABC, one of the sides adjacent to the right angle is 4cm longer than the other side. If the triangle has an area of 96cm^2 , find the length of the hypotenuse.

5. Solve $t^2 - 6t = 5$, giving answers in exact form.
Hence, find the roots of $(t-1)^2 - 6(t-1) = 5$

6. Solve for x :

(a) $|2x-11| = 3x-4$ (b) $\frac{|x-3|}{3-x} = x$

(c) $|x-3| + |x+4| = |x-2|$

7. A number consists of 2 digits whose sum is 11.

If the digits are reversed, the second number is 63 smaller than the first.

Use simultaneous equations to find the number.

8. How many points do the following curves have in common? What is/are they?

$x^2 - xy + y^2 = 21$ and $3x - 2y = 2$

9. Find the values of x , y and z for this set of simultaneous equations

$$\begin{cases} 2x + 3y + 4z = -4 \\ 3x + 4y - 2z = 17 \\ 4x + 6y - 3z = 25 \end{cases}$$

10. If x and y are real numbers such that $0 < y < x$ and $x^2 + y^2 = 6xy$, then the value of $\sqrt{\frac{x+y}{x-y}}$ is a surd.

Determine the value of this surd.

1a) $\frac{6}{4-x} = 2 \quad (x \neq 4)$

~~$(4-x)6 = 4(4-x)^2$~~

~~$4(4-x)^2 - 6(4-x) = 0$~~

~~$(4-x)(16-4x+6) = 0$~~

~~$(4-x)(10-4x) = 0$~~

~~$2(4+x)(5-2x) = 0$~~

~~$x = 4 \quad x = 2\frac{1}{2}$~~

$$6 = 8 - 2x$$

$$2x = 2$$

$$x = 1$$

1b) $2x^2 + 5x - 2 = 0$

$$x = \frac{-b \pm \sqrt{b^2 - 4ac}}{2a}$$

$$= \frac{-5 \pm \sqrt{25 + 16}}{4}$$

$$= \frac{5 \pm \sqrt{41}}{4}$$

1c) $x^2 + 11x + 30 = 42$

$x^2 + 11x - 12 = 0$

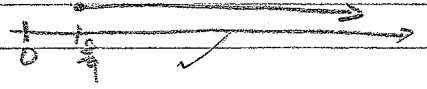
$(x+12)(x-1) = 0$

$\therefore x = -12 \text{ or } x = 1$

2a) $4\frac{2}{3} \leq 2 + 3x$

$2\frac{2}{3} \leq 3x$

$\therefore \frac{8}{9} \leq x$ ✓



2b) $5x - 9 > 21$

$5x > 30$

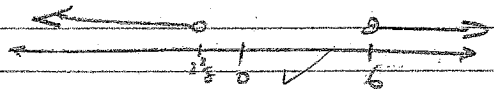
$x > 6$

$9 - 5x > 21$

$-5x > 12$

$5x < -12$

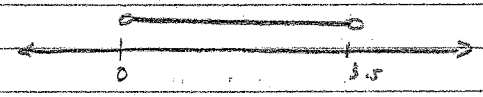
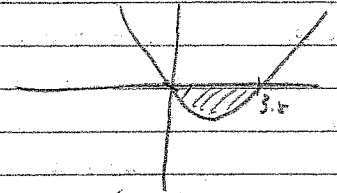
$x < 2\frac{2}{5}$ ✓



2c) $2x^2 - 7x < 0$

$x(2x - 7) < 0$

$\therefore 0 < x < 3.5$ ✓



2d) $2(x-1) > (4-x)(x-1)^2$ ✓

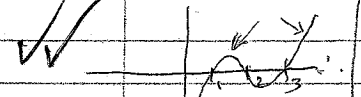
~~$(x-1)(x-1)^2 > 0$~~
 ~~$(x-1)^3 > 0$~~
 ~~$x-1 > 0$~~
 ~~$x > 1$~~

~~$(x-1)\{-x^2 + 5x - 6\} \leq 0$~~

~~$(x-1)\{x^2 - 5x + 6\} \geq 0$~~

~~$(x-1)(x-3)(x-2) \geq 0$~~

~~$(x-1)(x-3)(x-2) \geq 0$~~



$1 < x < 2$

$\therefore x < 1 \cup 2 \leq x \leq 3$



$$3a) \Delta = b^2 - 4ac$$

$$= 4 - 20$$

$$= -16$$

Since $\Delta < 0$ no real solutions. ✓

$$3b) \frac{\alpha + \beta}{2} = \frac{-b}{2}$$

$$= \frac{-14}{2}$$

$$= -7$$

3c) $(t+2)(t-2)(t^2-2t+4)$ are factors

$$t^3 - 8$$

$$t+2 \overline{) t^4 + 2t^3 - 8t - 16}$$

$$t^4 + 2t^3$$

$$- 0 - 8t - 16$$

$$- 8t - 16$$

$$0$$

$$t^2 - 2t + 4$$

$$t-2 \overline{) t^3 - 8}$$

$$t^3 - 2t^2$$

$$- 2t^2 - 8$$

$$- 2t^2 + 4t$$

$$4t - 8$$

$$4t - 8$$

$$0$$

$\therefore t=2$ & $t=-2$
are the only
solutions.

OR

$$t^4 + 2t^3 - 8t - 16$$

$$= t^3(t+2) - 8(t+2)$$

$$= (t^3 - 8)(t+2)$$

$$= (t-2)(t^2 + 2t + 4)(t+2)$$

$$= 0 \text{ when } t=2 \text{ or } -2$$

(Note $t^2 + 2t + 4 = 0$
has no solutions)

$$\Delta = 4 - 16 = -12$$

$$3d) \frac{2(x+1) - (x-1)}{(x+1)(x-1)} = 1 \quad x \neq 1 \text{ \& } x \neq -1$$

$$\therefore \frac{x+3}{x^2-1} = 1$$

$$\therefore x+3 = x^2-1$$

$$0 = x^2 - x - 4$$

$$x = \frac{1 \pm \sqrt{17}}{2}$$

$$= \frac{1 + \sqrt{17}}{2}, \frac{1 - \sqrt{17}}{2}$$

$$(x+1)(x-1)(x+3) = (x+1)^2(x-1)^2 \quad \leftarrow \text{Only no solution with inequality}$$

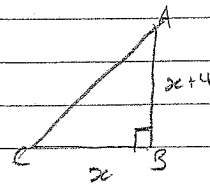
$$(x+1)(x-1)(x+x-1) - (x+3) = 0$$

$$(3x+1)(x-1)(x^2-1-x-3) = 0$$

$$(x+1)(x-1)(x^2-2x-4) = 0$$

$$\therefore x = \frac{1 \pm \sqrt{17}}{2}$$

4)



$$A = 96 = \frac{2(x+4)}{2}$$

$$192 = 2x^2 + 4x$$

$$x^2 + 2x - 96 = 0$$

$$(x-12)(x+8) = 0$$

$$\therefore x = 12 \text{ since } x \geq 0$$

$$\therefore AC^2 = (2x+4)^2 + x^2$$

$$= 6^2 + 12^2$$

$$= 400$$

$$AC = 20$$

good.

$$5) t^2 - 6t - 5 = 0$$

$$\frac{6 \pm \sqrt{36+20}}{2}$$

$$= \frac{6 \pm \sqrt{56}}{2} = 3 \pm \sqrt{14}$$

$$7) \frac{T}{x|y} \Rightarrow 10x + y$$

$$\begin{array}{l} \therefore N_1 = 10x + y \quad \leftarrow \begin{array}{c} \text{Tens} \\ x \end{array} \begin{array}{c} \text{units} \\ y \end{array} \\ N_2 = 10y + x \quad \leftarrow \begin{array}{c} y \end{array} \begin{array}{c} x \end{array} \end{array}$$

$$N_1 - 63 = N_2$$

$$\therefore 10x + y - 63 = 10y + x$$

$$9x - 9y = 63$$

$$x - y = 7 \quad \checkmark$$

$$\text{Also } xy = 11$$

$$\therefore xy = 11$$

$$x - y = 7$$

$$\therefore 2y = 4$$

$$y = 2$$

$$\therefore x = 9 \quad \checkmark$$

\therefore the number is 92 \checkmark V. good.

8) see \rightarrow Next page \rightarrow

$$9) \begin{array}{l} 2x + 3y + 4z = 4 \quad \text{--- (1)} \\ 3x + 4y - 2z = 17 \quad \text{--- (2)} \\ 4x + 6y - 3z = 25 \quad \text{--- (3)} \end{array}$$

$$(1) \times 2 \rightarrow 4x + 6y + 8z = 8 \quad \text{--- (4)}$$

$$(4) - (3) \quad \therefore 11z = 33$$

$$z = 3$$

$$9 \text{ cont'd)} \quad \begin{array}{l} 2x + 3y = 12 = -4 \Rightarrow 2x + 3y = 8 \\ 3x + 4y + 6 = 17 \Rightarrow 3x + 4y = 11 \end{array}$$

$$6x + 9y = 24$$

$$6x + 4y = 22$$

$$y = 2$$

$$x = 1$$

$$\therefore x = 1, y = 2, z = 3$$

$$10) (x+y)^2 = x^2 + y^2 + 2xy = 8xy$$

$$(x-y)^2 = x^2 + y^2 - 2xy = 4xy$$

$$\therefore \frac{(x+y)^2}{(x-y)^2} = \frac{8xy}{4xy}$$

$$\frac{x+y}{x-y} = \frac{\sqrt{8xy}}{\sqrt{4xy}}$$

$$= \sqrt{2}$$

$$\sqrt{\frac{x+y}{x-y}} = \sqrt{2} \quad \checkmark$$

$$8) x^2 - xy + y^2 = 21 \quad \leftarrow \text{d } y = \frac{3x-2}{2} \text{ substitute}$$

$$x^2 - x \left(\frac{3x-2}{2} \right) + \left(\frac{3x-2}{2} \right)^2 = 21 \quad (x-4)$$

$$4x^2 - 2x(3x-2) + (9x^2 - 12x + 4) = 84$$

$$4x^2 - 6x^2 + 4x + 9x^2 - 12x + 4 - 84 = 0$$

$$7x^2 - 8x - 80 = 0$$

$$(7x + 20)(x - 4) = 0$$

$$\therefore x = 4 \text{ or } x = -\frac{20}{7} \quad \left. \begin{array}{l} y = 5 \\ y = -3\frac{1}{4} \end{array} \right\} \text{ 2 points of intersection}$$