

★ ★ ★ ★ ★ ★ ★ ★ ★ ★
★ ONE HUNDRED STARS ★
★ ★ ★ ★ ★ ★ ★ ★ ★ ★

Autumn Winter 2025



The Autumn Winter 2025 collection

This year we have changed things a little. We have introduced a mid-season range, which is a collection to transition from spring/summer into autumn/winter.

This collection has subdued colours, featuring hues of grey, blue, and pink.

The Cranes in our signature plaster pink and classic black. Rivers and Trees takes its inspiration from watercolour prints. Fans with its amazing Art Deco feel.

We also celebrate 10 years as a brand this August! To honour this milestone, we have delved into our archive and created our Cornucopia design. This stylish print features a myriad of our motifs through the years.

Going into autumn/winter, our bestselling Cranes have changed their colours to winter plum and emerald. In a nod to our botanical past we have introduced Orchid and the gentle print of Parsley Seed. Finally, with a negative print feel and cool tones, the Pagoda print available in two colour stories.





Our Prints



Fans Scarlet Pussy Bow Blouse

Our Materials

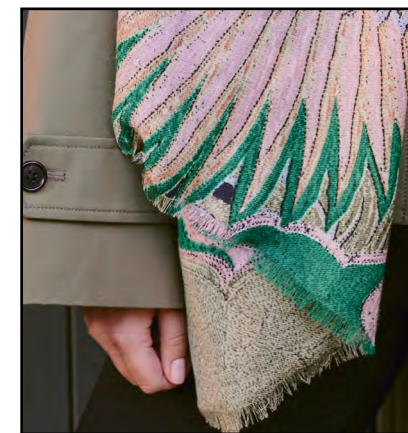
As a small family-run business having strong ethics behind our brand is vitally important to us. Whether it is ensuring all our products are only ever printed using AZO free dyes, to using recycled packaging wherever possible and using the most sustainable options across our business.



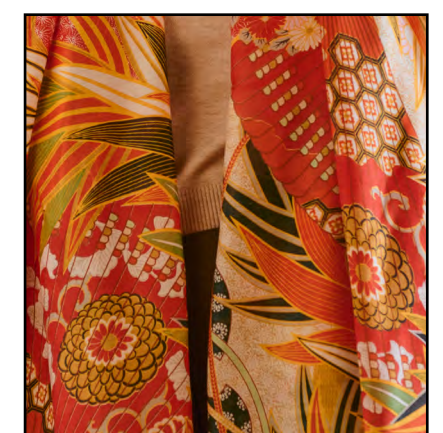
We have heavier weight Modal/Cupro mix in the Pussy Bow and Oversize Shirt. Perfect as the weather gets cooler.



Velvets are a must have part of our winter collection! The Grande and Jacket are back in our 100% organic cotton.



We have our 100% pure wool back in Scarves, Throwovers and the new Kimono.



LENZING™ Tencel™ is our hero fabric used for our Scarves, Kimonos, Throwovers and Gowns. It is made from regenerated cellulosic fibres.



RIVERS & TREES

A hand drawn illustration of different types of trees set around natural pools and rivers.

Green and grey watercolors give this print a dreamy, faded quality of an classic print.



1. Rivers & Trees Pussy Bow Blouse | Palazzo Pants | 2. Rivers & Trees Midi Dress | 3. Rivers & Trees Kimono





FANS SCARLET

A stunning art deco inspired design.
Two giant fans with eucalyptus leaves in
traditional Japanese prints. An explosion of
orange and reds symbolizing strength and
luck.



1. Fans Grande Kimono | 2. Fans Pussy Bow Blouse | 3. Fans Crepe Grande



MAGNOLIA PLATES

Chinese plates with pink peonies float across a giant magnolia background. A base colour of cerulean blue.



1. Magnolia Plates Scarf | 2. Magnolia Plates Pussy Bow Blouse and Skirt | 3. Giant Magnolia Darcy Dress



CORNUCOPIA

Inspired by our anniversary this year. Our 10-year archive of patterns has created this eclectic print. A classic Ivory background with a myriad of motifs. Deco Bud, Dragons, Chrysanthemum and Opulence are all in this design somewhere, can you remember them?



1. Cornucopia Throwover | 2. Cornucopia Pussy Bow Blouse | 3. Cornucopia Oversized Shirt



NASTURTIIUM

A giant print of hazy leaves and flowers.
Autumnal colours, rust, ochre,
cinnamon and fawn.



1. Nasturtium Scarf | 2. Nasturtium Kimono | 3. Nasturtium Print





SUSANI

A bold oversized pattern inspired by traditional Susani needlework throws. Originating from East Asia made by embroidering a chain stitch pattern to a cloth base. Taupe and khaki chainstitch on a flat charcoal background give a subdued look to this bold print.

1. Susani Wool Throwover | 2. Susani Wool Scarf | 3. Susani Gown



CRANE BLACK, EMERALD, PLUM & PLASTER PINK

Symbolising good fortune and longevity
our Crane print is now a classic in our
collection. These large, graceful cranes fly
across an array of background colours.

1. Crane Plum Pussy Bow Blouse | 2. Crane Plaster Pink Pussy Bow Blouse | 3. Crane Emerald Kisslock Clasp Bag





PRIMULA GOLD, BERRY, BLACK & STONE

Inspired by the Dutch Old Masters.
A blooming bouquet of primroses,
auriculas, and polyanthus flowers in a
stunning range of bold colours.
The detail in this print is spectacular!



1. Primula Berry Kimono | 2. Primula Black Skirt | 3. Primula Stone Pussy Bow Blouse



PARSLEY SEED

Inspired by a giant cow parsley plant,
just about to seed!
Pink, rust and camel flowers set on a
midnight blue base.



1. Parsely Seed Wool Kimono | 2. Parsley Seed Velvet Jacket | 3. Parsley Seed Oversized Shirt



PAGODA PEWTER & FOREST

Giant pagoda and trees with a mirror image.
Pagoda forest features a green base with blues and a dash of flurorescent orange to make this quirky design pop.
Pagoda Pewter has highlights of rust and and charcoal on a grey background which help to give this print a 'Spitalfields' look.



1. Pagoda Pewter Velvet Jacket | 2. Pagoda Forest Wool Scarf | 3. Pagoda Pewter Pussy Bow Blouse



ORCHID

An oversized botanical print of the stunning Slipper Orchid. Set to a matt black base showing the exquisite stripe of the bloom and the contrast indigo. A seductive, art deco feel.



1. Orchid Black Wool Throwover | 2. Orchid Black Kimono | 3. Orchid Black Oversized Shirt



★ ONE HUNDRED STARS ★

Autumn Winter 2025