

A woman with long brown hair and a yellow and blue headband is peeking through a circular opening in a sandy wall. In the foreground, a white fabric with a pattern of yellow lemons and blue leaves is draped across the frame. The text "BLOOM & BAY" is overlaid in the center.

**BLOOM & BAY**



Bloom & Bay collections  
move effortlessly  
through trends and  
seasons, offering  
contemporary design,  
with attention to  
refinement and an easy  
to wear aesthetic.

**BLOOM & BAY**



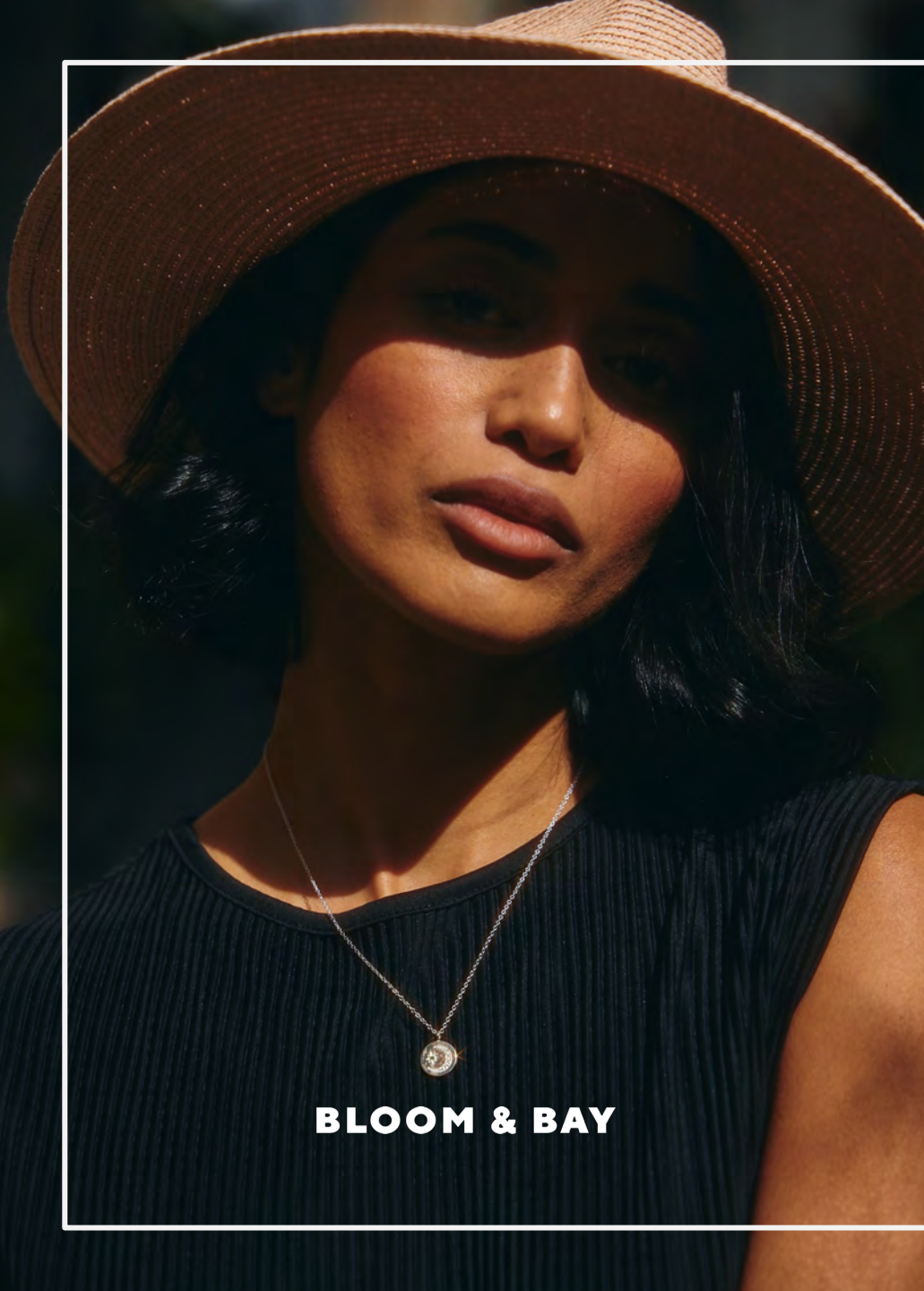




**BLOOM & BAY**









**BLOOM & BAY**



**BLOOM & BAY**







**BLOOM & BAY**





**BLOOM & BAY**





**BLOOM & BAY**







**BLOOM & BAY**



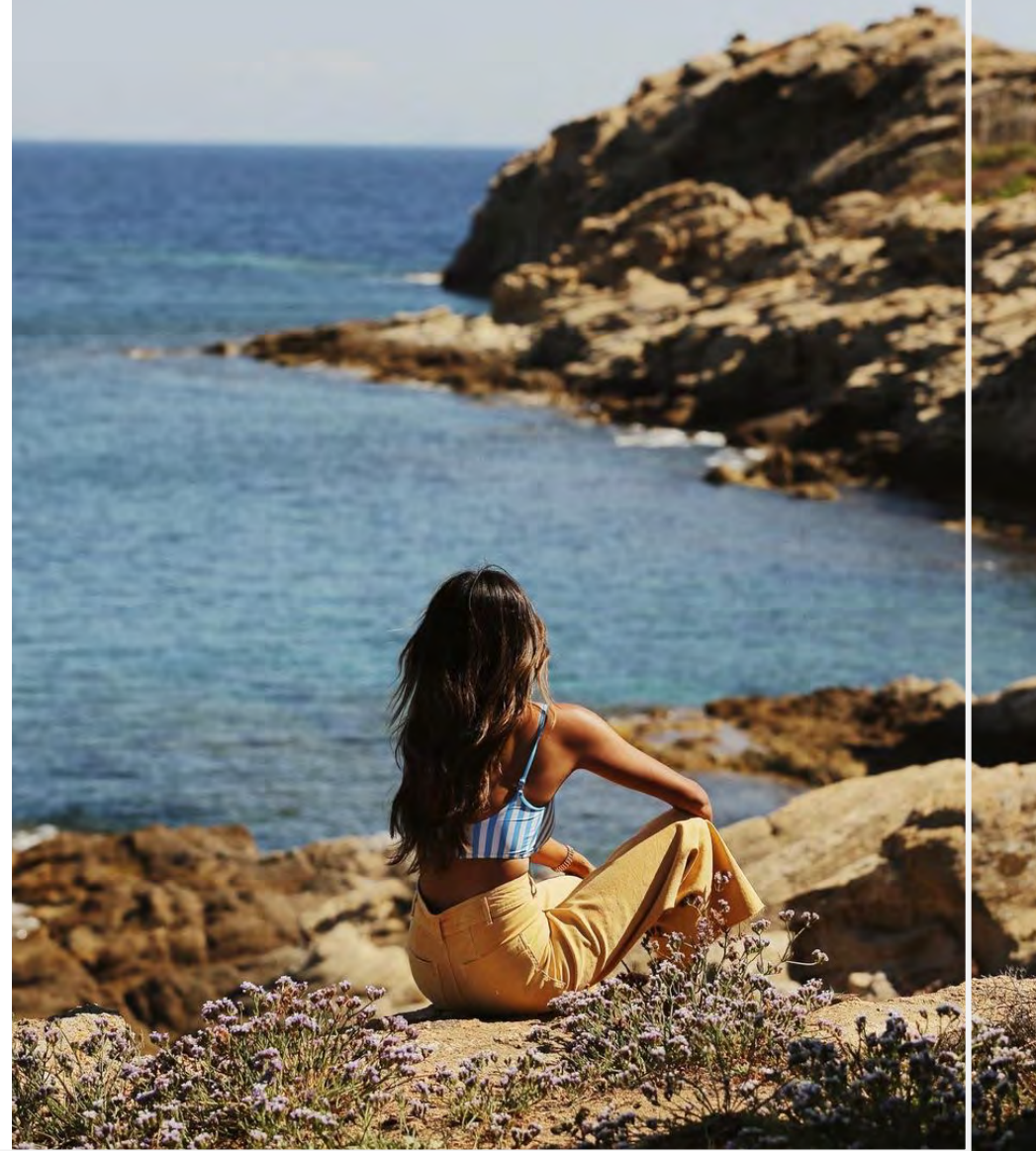


**BLOOM & BAY**





**BLOOM & BAY**











BLOOM & BAY



**BLOOM & BAY**







BLOOM & BAY





**BLOOM & BAY**





# THE BRAND STABLE

81 RIVINGTON STREET  
LONDON  
EC2A 3AY  
+44 203 137 7217

**BLOOM & BAY**