

HOMWARE + ACCESSORIES



Emily Smith



**Make
Home
Beautiful.**

Contents

05	OUR STORY	19	COMPACT MIRRORS	31	MINI CHOPPING BOARDS
06	JUGS & MUGS	21	UMBRELLAS	33	RECYCLED GLASS PLATTERS
10	COIN PURSES	23	NOTEBOOK & PEN SET	35	GIN IN A TIN
12	COASTERS & PLACEMATS	25	FABRICS	37	CARDS
15	TEA TOWELS	27	CUSHIONS		
17	COSMETIC BAGS	29	ORGANIC TOTE BAGS		





*They said paint it mum
... so I did*

Our Story

Emily Smith is a British brand that launched in 2018.

Emily is a dairy farmer's wife and mother to two fantastic children, her venture all started with a painting she did for her son's bedroom. She then stepped out of her comfort zone from a simple canvas to pursue and grow her love for design. She has now curated a collection of luxury homewares and accessories, one to make a person smile. Each of Emily's designs brings character and charm, inspired by the imaginations of her children, William and Livy, and from living in the beautiful Devon countryside.

Emily is proud to support British manufacturing and she has a real passion for combining colour, fun and quality.

Discover her passion...

Jugs & Mugs





CAMILLA OSTRICH

- Fine Bone china jugs
- British made
- 1 pint, ½ pint & ¼ pint

- Hand painted rims
- Dishwasher safe
- Microwave safe





FLOSSY & AMBER
FLAMINGO



ELLIOTT & GEORGINA
GIRAFFE



RUEBEN RHINO



LUANNA LEOPARD



STELLA SLOTH



ZARA ZEBRA



TAJ TOUCAN

- Fine Bone china mugs
- British made
- 400ml

- Hand painted rims
- Dishwasher safe
- Microwave safe





CAMILLA OSTRICH



LIVY LEMUR



PERCY & PENELOPE
PARROT



SKYLA KINGFISHER



HERMIONE HUMMINGBIRD



JEMIMA JELLYFISH



OSCAR OCTOPUS



BELLA BEE

- Fine Bone china mugs
- British made
- 400ml

- Hand painted rims
- Dishwasher safe
- Microwave safe



Coin Purses





FLOSSY & AMBER FLAMINGOS



HERMIONE HUMMINGBIRD



JEMIMA JELLYFISH



LIVY LEMUR



JEMIMA JELLYFISH



CAMILLA OSTRICH



ZARA ZEBRA



BELLA BEE

- British made
- Handmade

- Velvet coinpurse with black lining
- Silk beehive tassel



Coasters & Placemats



RUEBEN RHINO



LUANNA LEOPARD



STELLA SLOTH



ZARA ZEBRA



CAMILLA
OSTRICH



FLOSSY & AMBER
FLAMINGO



LIVY
LEMUR



SKYLA
KINGFISHER



HERMIONE
HUMMINGBIRD



JEMIMA
JELLYFISH



OSCAR
OCTOPUS



ELLIOTT & GEORGINA
GIRAFFE



BELLA BEE



PERCY & PENELOPE
PARROT

- British made
- Hand finished
- 10cm diameter

- 100% PEFC certified
- 100% formaldehyde free



CAMILLA OSTRICH



BELLA BEE



JEMIMA JELLYFISH



HERMIONE
HUMMINGBIRD

- British made
- Hand finished
- 25.5cm diameter

- 100% PEFC certified
- 100% formaldehyde free



Tea towels





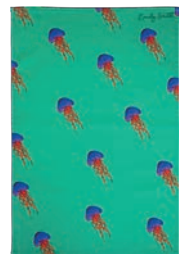
SKYLA KINGFISHER



OSCAR OCTOPUS



LUANNA LEOPARD



JEMIMA JELLYFISH



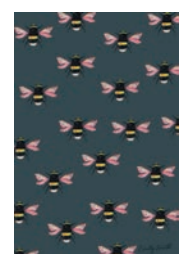
LIVY LEMUR



ZARA ZEBRA



RUEBEN RHINO



BELLA BEE



FLOSSY & AMBER
FLAMINGO



CAMILLA
OSTRICH



PERCY & PENELOPE
PARROT



HERMIONE
HUMMINGBIRD

- British made
- 100% cotton
- 37cm x 69cm

- Tumble dryer & iron safe (low heat)



Cosmetic bags





SKYLA KINGFISHER



LUANNA LEOPARD



ZARA ZEBRA



OSCAR OCTOPUS



JEMIMA JELLYFISH



PERCY & PENELOPE
PARROT



CAMILLA OSTRICH
(MULTI PRINT)



FLOSSY & AMBER
FLAMINGO



RUEBEN
RHINO

- British made
- Cotton
- 30cm x 15cm

- Silk beehive tassel
- Black waterproof lining



*Compact
mirrors*

Emily Smith



CAMILLA OSTRICH



RUEBEN RHINO



FLOSSY & AMBER
FLAMINGO



LUANNA LEOPARD



JEMIMA JELLYFISH



OSCAR OCTOPUS



PERCY & PENELOPE
PARROT



ZARA
ZEBRA



- British made
- 6cm x 6cm x 1cm

- Pu folding mirror
(plain & magnifying mirrors)



Umbrellas



CAMILLA OSTRICH



TAJ TOUCAN



HERMIONE
HUMMINGBIRD



OSCAR OCTOPUS



BELLA BEE



SKYLA KINGFISHER



FLOSSY & AMBER
FLAMINGO



PERCY & PENELOPE
PARROT



JEMIMA JELLYFISH



LIVY LEMUR



- British designed
- Fiberglass ribs
- Wood shaft & handle
- Pongee canopy (quick dry, anti-tear)

- Push-button automatic open
- Nickel rib tips
- Nickel top tip is resistant to cracking if used as walking stick



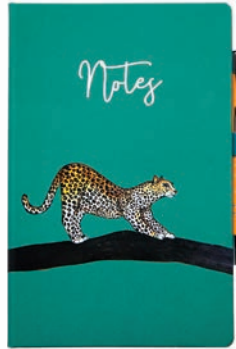
Notebook & pen set



SKYLA
KINGFISHER



OSCAR
OCTOPUS



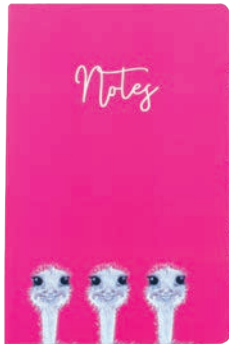
LUANNA
LEOPARD



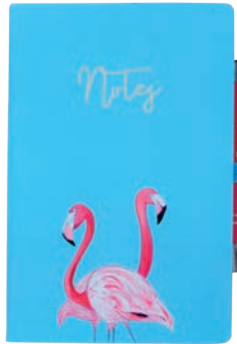
PERCY & PENELOPE
PARROT



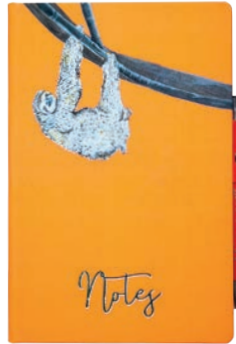
RUEBEN
RHINO



CAMILLA
OSTRICH



FLOSSY & AMBER
FLAMINGO



STELLA
SLOTH



TAJ
TOUCAN



ZARA
ZEBRA

- A5
- Soft touch cover
- Pen included

- Internal document pocket
- Pen loop & elasticated band closure
- FSC lined paper

Fabrics

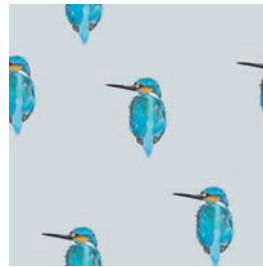




HERMIONE
HUMMINGBIRD



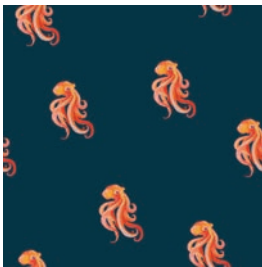
JEMIMA
JELLYFISH



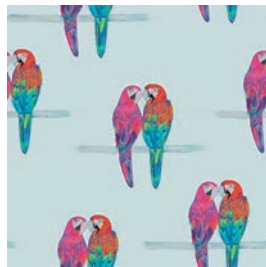
SKYLA
KINGFISHER



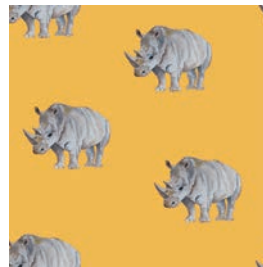
LIVY
LEMUR



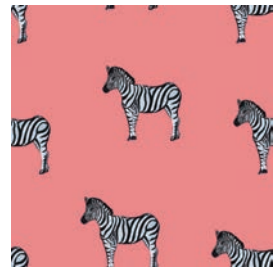
OSCAR
OCTOPUS



PERCY & PENELOPE
PARROT



RUEBEN
RHINO



ZARA
ZEBRA

Available in the following fabrics:

- Organic Cotton (Half panama 30g)
- Velvet (275g)
- Eco - Linen Blend (284g)
- FR Velvet (320g)
- Outdoor Waterproof Fabric (FR)
- Minimum order 10 meters
- 3 week lead time
- UK made

Cushions





JEMIMA JELLYFISH



OSCAR OCTOPUS



PERCY & PENELOPE PARROT

- 40x40cm
- Duck feather insert

- 100% cotton
- British made

Organic Tote Bags





JEMIMA JELLYFISH



OSCAR OCTOPUS

- 100% Organic Cotton Canvas
- 400 x 390 x 19mm

- 30 Litres
- Natural wooden toggle closure



*Mini
chopping
boards*



SKYLA
KINGFISHER



LUANNA
LEOPARD



JEMIMA
JELLYFISH



OSCAR
OCTOPUS



CAMILLA
OSTRICH



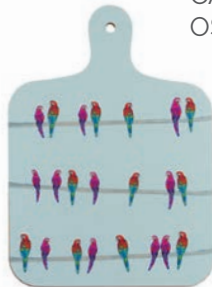
ZARA
ZEBRA



RUEBEN
RHINO



BELLA
BEE



PERCY & PENELOPE
PARRROT



FLOSSY & AMBER
FLAMINGO



HERMIONE
HUMMINGBIRD



LIVY
LEMUR

- British made
- 290 x 190mm
- Heat Resistant to 145°C

- Wipe Clean Only
- Sustainably sourced Eucalyptus base



Recycled Glass Platters



CAMILLA OSTRICH



ZARA ZEBRA



LIVY LEMUR



BELLA BEE



FLOSSY & AMBER
FLAMINGO



JEMIMA JELLYFISH



HERMIONE
HUMMINGBIRD

- Withstands temperatures of up to 180 degrees
- Dishwasher proof

- Recycled toughened glass
- UK made



*Gin in
a Tin*

GIN IN A TIN™

THE UNITED COLOURS OF JUNIPER

Gins of Distinction that Speak Volumes



We are excited to introduce our first collaboration with Gin in a Tin. Inside our Camilla tin is Emily's favourite tippie: best selling blend Gin No.2.

We love Gin No.2 with its distinctive notes of lemon peel, coriander, cardamom, and many more botanicals centred around juniper berries to create the ultimate refreshing taste.

Using classic dry botanicals, this is a straight forward no-nonsense gin. Perfect for a martini or G&T.

- **Tasting Notes**

A smooth crisp gin with juniper at the forefront, citrus notes of lemon and orange, finished with subtle notes of cardamom.

- **Serving Suggestion**

Serve over ice with tonic and garnish with pink grapefruit. Alternatively mix up as a martini.

- **Allergen Advice**

May contain wheat

- **British Made**

THE

seed

card

x

Emily Smith

COMPANY





FLOSSY & AMBER
FLAMINGO



PERCY & PENELOPE
PARROT



CAMILLA OSTRICH



SKYLA KINGFISHER



STELLA SLOTH



OSCAR OCTOPUS



LUANNA LEOPARD



HERMIONE HUMMINGBIRD



TAJ TOUCAN



BELLA BEE



LIVY LEMUR



ELLIOT & GEORGINA
GIRAFFE

• Our cards are made entirely from post-consumer up cycled paper waste, meaning no trees are harmed in their manufacturing process. They are recyclable, biodegradable and embedded with wildflower seeds.

• Each time you place an order for our cards, The Seed Card Company and Ecologi will plant 10 trees on your behalf.

• notecard sets and gift tags also available

Emily Smith



FLOSSY & AMBER
FLAMINGO



PERCY & PENELOPE
PARROT



CAMILLA OSTRICH



SKYLA KINGFISHER



STELLA SLOTH



OSCAR OCTOPUS



LUANNA LEOPARD



HERMIONE HUMMINGBIRD



TAJ TOUCAN



BELLA BEE



LIVY LEMUR



ELLIOT & GEORGINA
GIRAFFE

• notecard sets and gift tags also available

SUPPORTING **UK** MANUFACTURING

WWW.EMILY-SMITH.UK

#EMILYSMITHDESIGNS

 [EMILYSMITHDESIGNS](https://www.instagram.com/emilysmithdesigns)

