

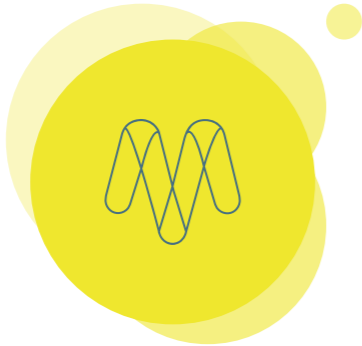


# portfolio.

we render  
the fictions.

selected work\_  
architectural visualizations

**2023**



MAGIC MORPHEUS  
DESIGN STUDIO

SELECTED WORK\_2023

we render  
the fictions.



**3D** Architectural  
Visualizations

# contents

what we do	05
our team	06
our clients	10
contact us	11
still Images	12
film	178
interactive platforms	186
AR / VR	192

# what we do

At DynamicX Plus, we try to bridge the gap between imagination and visualization. Since our establishment in 2011, we've redefined visual storytelling through Architecture Visualizations (ArchViz), cinematic videos, AR, VR, and digital interactive experiences. Based in the, UK DynamicX Plus's production facility in Sri Lanka amplifies its strengths and its diverse portfolio.



3D VISUALIZATION



FILM



INTERACTIVE  
PLATFORMS



AR / VR

# Our Team

---



## MADHAWA GOONETILLEKE

Director - Productions

Madhawa is a founding partner of Magic Morpheus Design Studio and is one of the most versatile members of our team. His professional experience of more than 10 years spreads through the industries of filming to television to advertising design and to visualizations. After gaining his bachelor of Design degree specialized in Graphic and Communication design from the University of Moratuwa he has completed a diploma in 3D Design and a Certificate in Real Time Virtual Environment Design from India to pursue his passion in visualization. Apart from this, he is also working as a visiting lecturer at AMDT School of Creativity and at Department of Design, NSBM Green University.



## CHINTHAKA PATHIRANA

Associate / Project Manager

Chinthaka is a senior member/ associate of our team who has experience in the creative industry over a decade working in the television industry, Event planning & production and in the Architectural visualization fields, in local companies as well as in the Middle East. He holds a bachelor of Design degree specialized in Graphic and Communication design from the University of Moratuwa, a diploma in 3D visualizations and is an accomplished project manager whose aim is to deliver the best quality product on time.



## KRISHANI WIJESUNDARA

Director - Creatives

Krishani is a founding partner of Magic Morpheus Design Studio and has experience in working in the creative industry for more than 10 years. She holds a bachelor of Design degree specialized in Graphic and Communication design from the University of Moratuwa. She has worked in the advertising and visual communication fields and has worked as a lecturer for Multimedia design as well. Her specialization areas include creative directing, art directing, concept developing and visual communication design.



## ARSHAD NISTHAMIN

Lead 3D Artist

Arshad is a talented 3D visualizer who leads our team of 3D Artists. Prior joining Magic Morpheus Design Studio he has worked in architectural & construction companies for more than 6 years. Hence, he is an expert in 3D architectural visualizations. He is a double Diploma holder in Multimedia and Information & Communications Technology.



## MAHESH NAVINNA

Director / Growth Officer – UK

Mahesh's professional experience of more than a decade covers a vast area of strategic relations, international business management, brand building & Marketing. He is an energetic and a hard-working team player who is dedicated to work towards the company's growth and success. Mahesh is a University College Dublin graduate with a bachelor's degree in International Business and a Cardiff Metropolitan University graduate with a MBA in International Business.



## LAKITHA CHAMENDRA

Senior 3D Artist

Lakitha is a diploma holder in Graphic Design and has worked as a junior visualizer for years before joining our team as a senior 3D Artist. His specialization area is virtual environment lighting and camera compositions.



**DIMUTHU PRABHATH**  
CG Generalist / Pipeline Specialist

Dimuthu plays a key role in our team whose skills range from video compositing and editing to 3D animations. Prior to joining Magic Morpheus design studio, he worked in a renowned local production house carving his skills and expertise in compositing, animation, and editing while working on numerous projects relating to TV commercials, Tele dramas, and Documentary films.



**NIMESH RUBASINGHE**  
Senior 3D Artist

Nimesh started his career as an assistant Quantity Surveyor after completing a National Diploma in Quantity Surveying at NDQS. His passion for 3D visualizations inspired him to join our team as a junior 3D artist and his knowledge in rendering pipeline optimization and project management lead him to become a senior 3D Artist in a short period of time.



**HASANI MADHUMAYA**  
Senior 3D Artist

Hasani is a Diploma holder in Multimedia and had worked as an instructor for 3D visualizations prior joining Magic Morpheus Design Studio. Her specialization area in 3D visualization is 3D character and product modeling.



**SASANKA THALAGALA**  
3D Artist / Creative Designer

Sasanka's expertise ranges from Graphic design to 3D visualizations to Visual effects. She is an undergraduate at AMDT School of Creativity following the BA(Hons) Degree in Animation & Visual Effects. She has experience in working as a creative designer for more than 10 years in local companies and as well as in Doha Qatar.

## Our Team cont.

---



**OSHAN CHATHURANGA**  
Realtime 3D Specialist

Oshan is a talented team player who is an expert in concept art and sketching and is occupied as a Realtime 3D Specialist at Magic Morpheus Design Studio. Before joining our team, he has worked in the television industry as a 3D Artist after graduating from the NSBM Green University with a bachelor's degree in Multimedia.



**ISURU INDRAJITH**  
Concept 3D Artist

Isuru gained his bachelor's Degree in Multimedia from the NSBM Green University and is passionate about concept art, photography and videography. Prior joining our team as a concept 3D Artist he has worked as a professional photographer and a videographer.



**ISURI YADEESHANI**  
3D Artist / Interior Architect

Isuri is a Bachelor of Arts in Interior Architecture graduate from the NSBM Green University who has worked as an interior designer before joining our team as a 3D artist/ Interior Architect. She is a talented illustrator and a concept artist too.

# Our Clients



# Contact Us...

## United Kingdom

✉ hello.plus@dynamicxplus.co.uk

☎ +44 (0)73 609 63818 / +44 (0)33 004 36757

📍 Britannia House, Caerphilly Business Park, Caerphilly CF83 3GG, United Kingdom

🌐 www.dynamicxplus.co.uk

## Sri Lanka

✉ team@magicmorpheus.com

☎ +94 71 666 9739

📍 No.135, Thisara Plaza, Dutugemunu Street, Kohuwala, 10250, Sri Lanka

🌐 www.magicmorpheus.com

MAGIC MORPHEUS DESIGN STUDIO

find us





**3D** Architectural  
Visualizations

---

# STILL IMAGES

---

SELECTED WORK

20223







PROJECT | FOG\_Mountain Forest Water Villas by KWA Architects  
Bhoomi, Prime Group



PROJECT | FOG\_Mountain Forest Water Villas by KWA Architects  
Bhoomi, Prime Group



PROJECT | FOG\_Mountain Forest Water Villas by KWA Architects  
Bhoomi, Prime Group



PROJECT | FOG\_Mountain Forest Water Villas by KWA Architects  
Bhoomi, Prime Group



PROJECT | FOG\_Mountain Forest Water Villas by KWA Architects  
Bhoomi, Prime Group







PROJECT | Housing Project by Ogellarc  
Regent Homes (PVT) LTD



PROJECT | Housing Project by Ogellarc  
Regent Homes (PVT) LTD



PROJECT | Capital Twin Peaks  
Sanken Construction (Pvt) Ltd

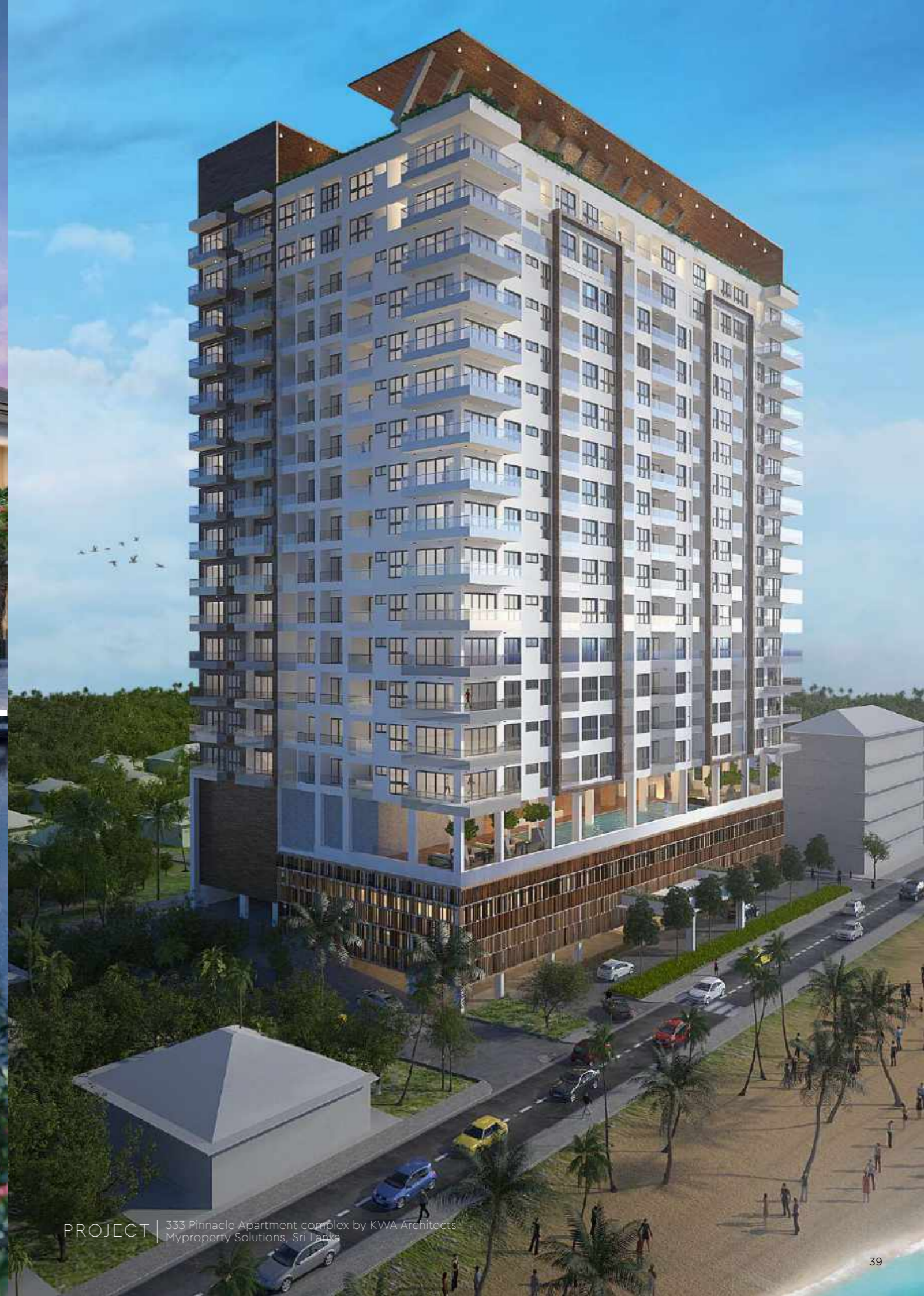


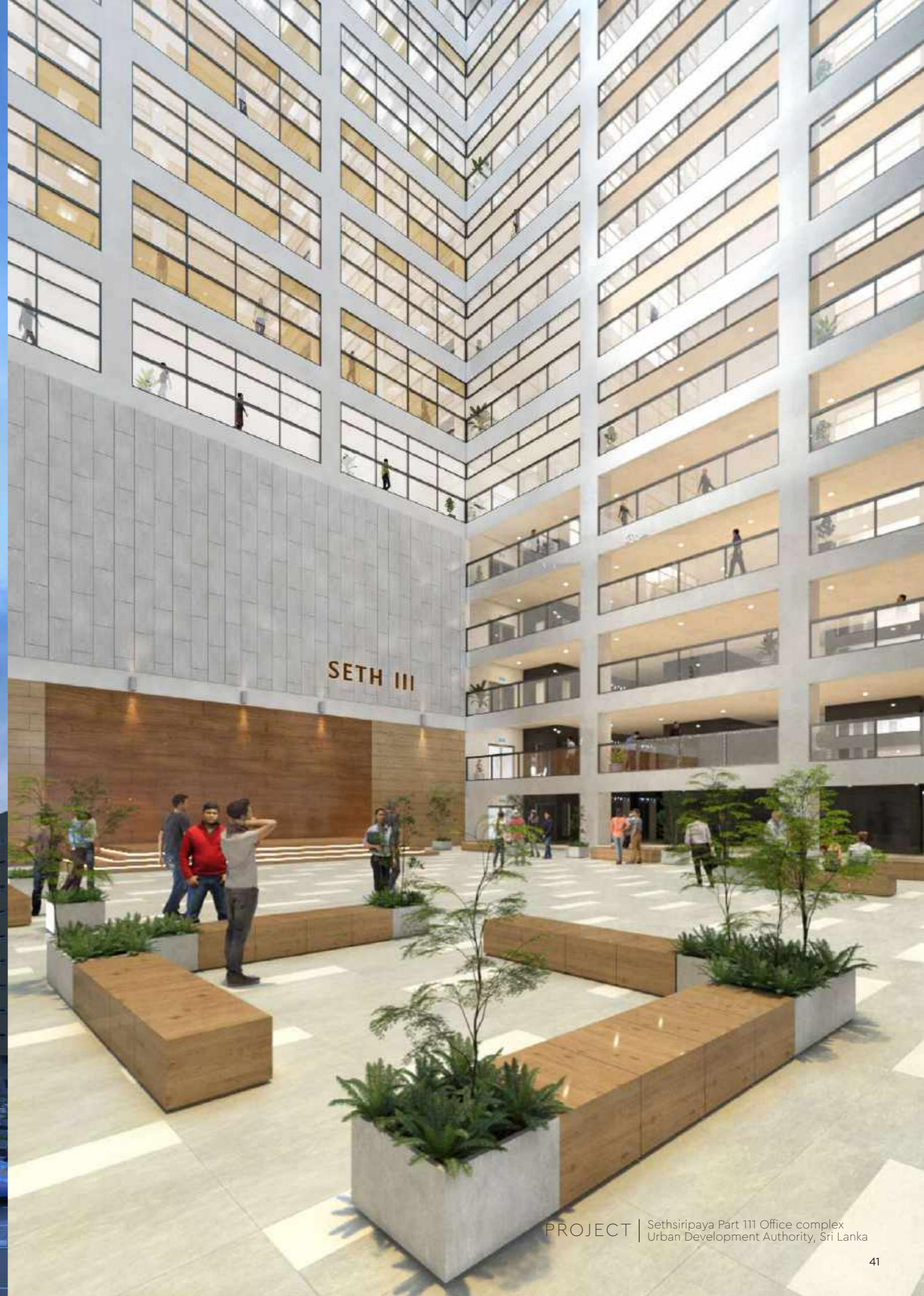




PROJECT | Museum Interior  
Dubai, UAE









PROJECT | Sethsiripaya Part 111 Office complex  
Urban Development Authority, Sri Lanka



PROJECT | Ambience Product Rendering  
Matera Product Management, Switzerland



PROJECT | Ambience Product Rendering  
Matera Product Management, Switzerland





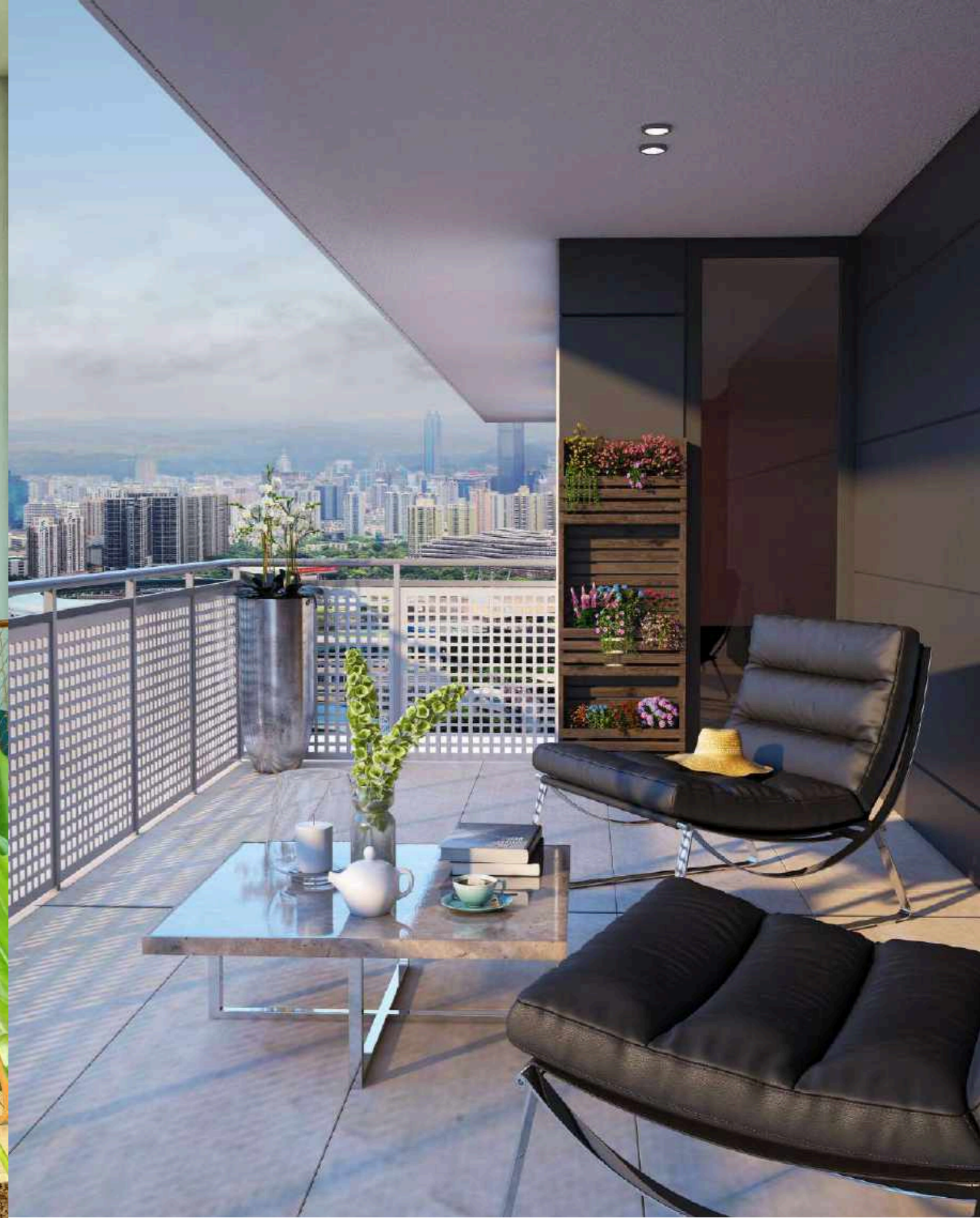
PROJECT | Ambience Product Rendering  
Matera Product Management, Switzerland



PROJECT | Ambience Product Rendering  
Matera Product Management, Switzerland



PROJECT | Ambience Product Rendering  
Matera Product Management, Switzerland



PROJECT | Ambience Product Rendering  
Matera Product Management, Switzerland



PROJECT | Cinnamon Life Hotel  
KWA Architects



PROJECT | Cinnamon Life Hotel  
KWA Architects



PROJECT | Cinnamon Life Hotel  
KWA Architects



PROJECT | Cinnamon Life Hotel  
KWA Architects



PROJECT | Pepper Mint Grove Mixed Development  
KWA Architects





PROJECT | Pepper Mint Grove Mixed Development  
KWA Architects













PROJECT | Monarch Imperial  
KWA Architects



PROJECT | Monarch Imperial  
KWA Architects

















PROJECT | Ambience Product Rendering  
Lanka Tiles



PROJECT | Ambience Product Rendering  
Lanka Tiles







PROJECT | Ambience Product Rendering  
Lanka Tiles





PROJECT | Ambience Product Rendering  
Lanka Tiles



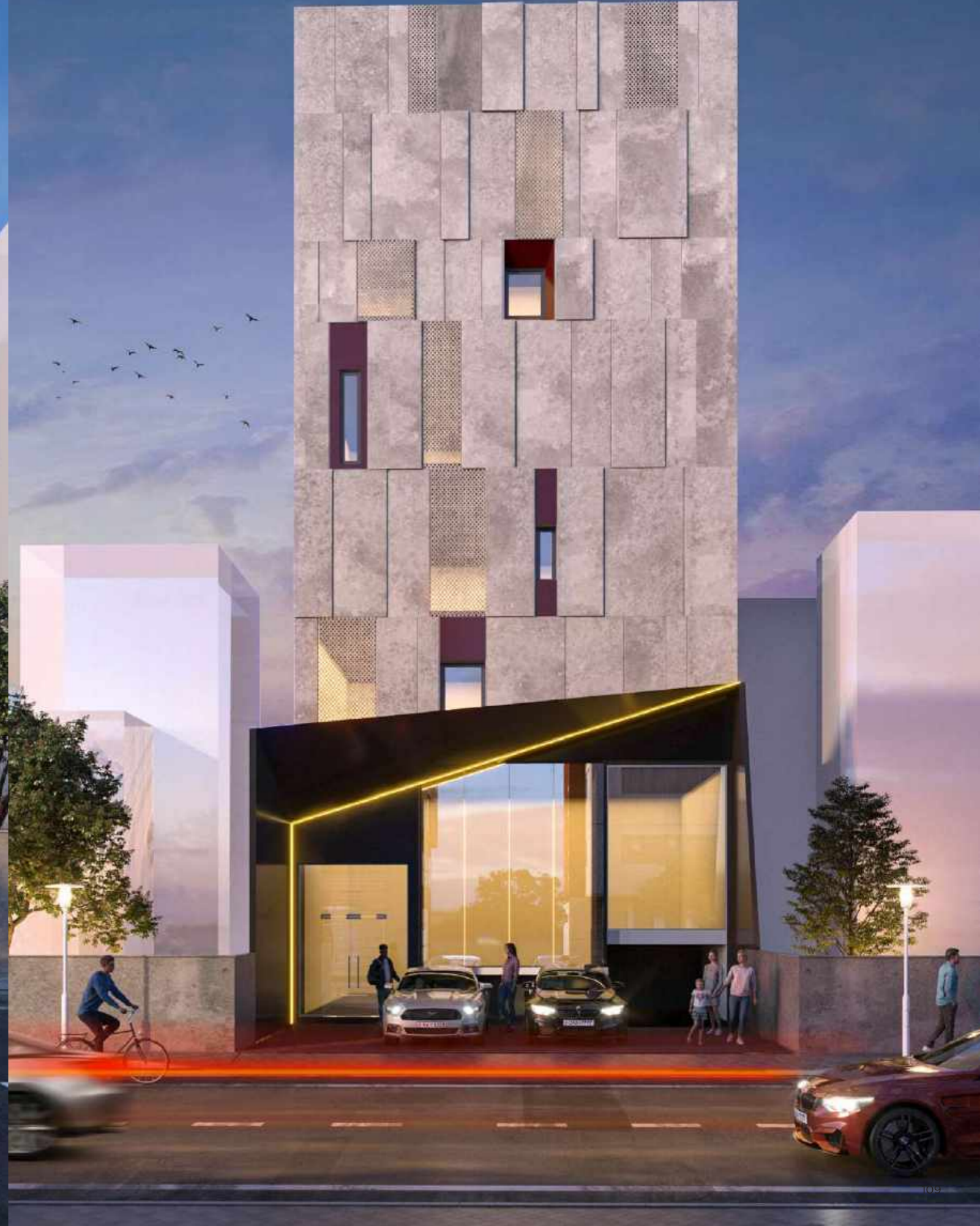
PROJECT | Ambience Product Rendering  
Lanka Tiles



PROJECT | Ambience Product Rendering  
Lanka Tiles



PROJECT | Port City  
Development





PROJECT | Beach Cottages, Rock DB Design & Build  
Turks & Caicos Islands







PROJECT | Living Room Interior  
UAE



PROJECT | Colombo Flyover Project by Centunion, Spain  
Access Engineering



PROJECT | Colombo Flyover Project by Centunion, Spain  
Access Engineering



PROJECT | Paediatric Unit of Teaching Hospital – Karapitiya, Sri Lanka  
Central Engineering Consultancy Bureau





PROJECT | Commercial Building  
Denver, USA



PROJECT | Ambience Product Rendering  
Lanka Tiles





PROJECT | Residential Project  
Architect Diluk Dayaratne





PROJECT | Ambience Product Rendering  
Lanka Tiles



PROJECT | Housing Project  
Prime Lands



PROJECT | Apartment Project  
USA



PROJECT | George One Apartment Complex  
George Steuart Engineering



PROJECT | George One Apartment Complex  
George Stuart Engineering



PROJECT | Residential Project  
Wellington, New Zealand



PROJECT | Residential Project  
Wellington, New Zealand



OAK RIDGE  
RESIDENCIES



OAK RIDGE  
RESIDENCIES





PROJECT | Oak Ridge Housing Project  
Royal Oak









PROJECT | Housing Project  
Cornwall, United Kingdom



PROJECT | Housing Project  
Cornwall, United Kingdom



PROJECT | Housing Scheme  
United Kingdom



PROJECT | Residencial Project  
United Kingdom





PROJECT | Residencial Villa  
United Kingdom



PROJECT | Apartment Complex by Global Drafting Studio  
United Kingdom





PROJECT Luxury Apartment Interior  
UAE



PROJECT Luxury Apartment Interior  
UAE



PROJECT | Residential Project by Global Drafting Studio  
United Kingdom

PROJECT Spring Tower  
Canada





PROJECT | Residential Project  
Prime Lands





3D Architectural  
Visualizations

FILM

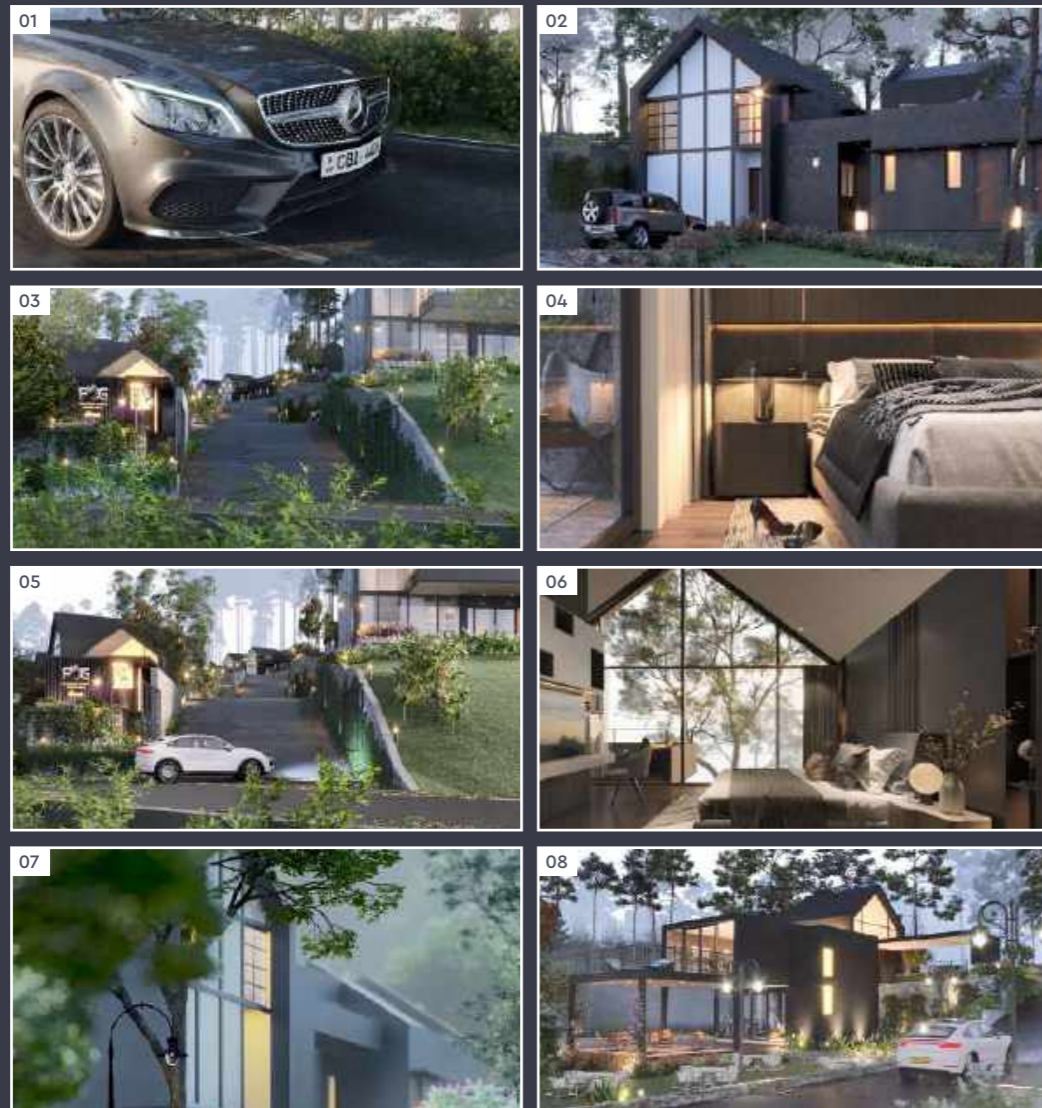
SELECTED WORK

2022





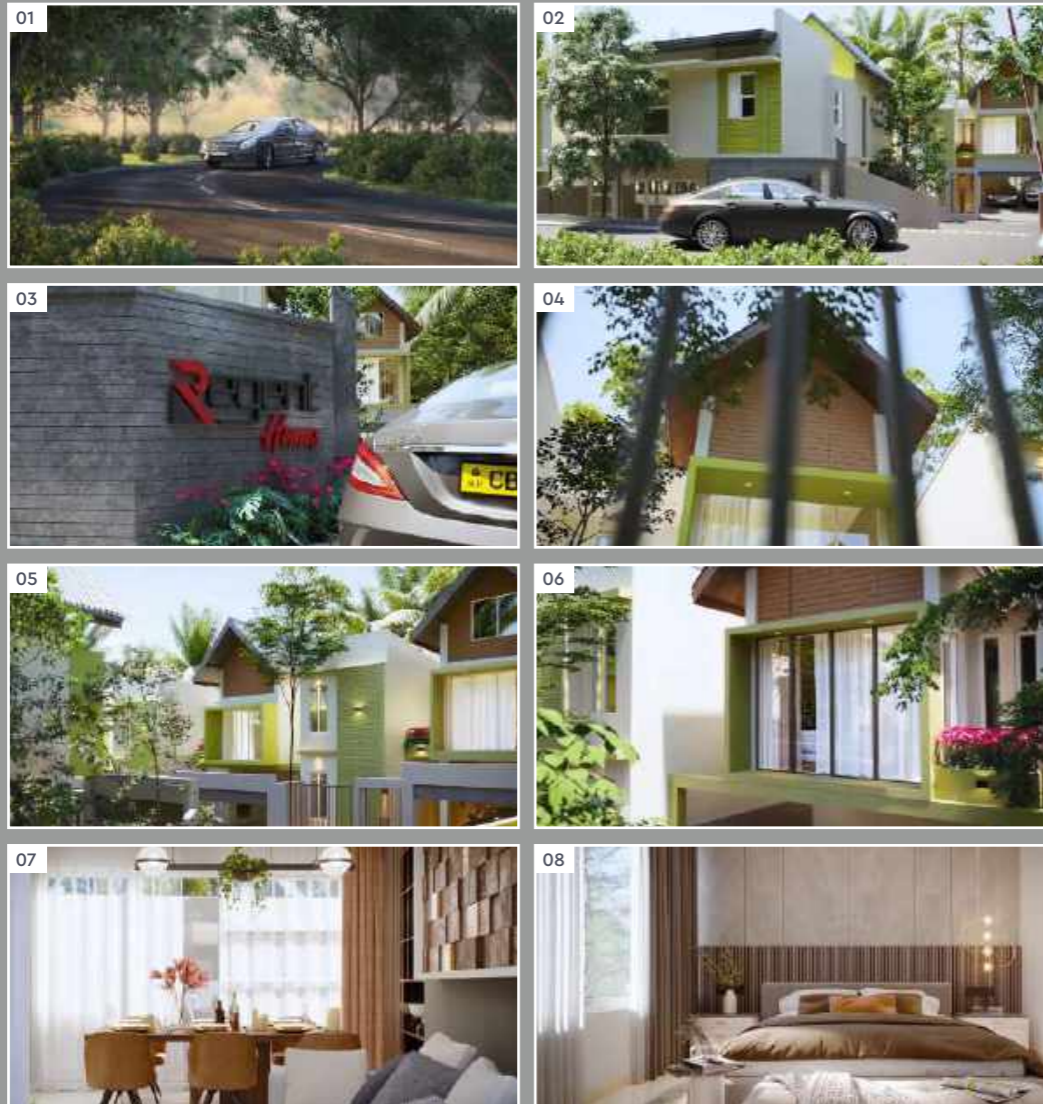
Story Board



Shot 1	<i>Bhoomi presents...</i>
Shot 2,3,4	The dawn of an exceptional new opportunity.  Located in the upcountry district of Nuwara Eliya and situated in the virgin verdance of Ambewela, Bhoomi presents a first of its kind living experience, opportunity for investment and landmark in architectural vision.  Bordered by the misty mountainscapes of the Hakgala cloud forest, a highly sensitive nature reserve in Sri Lanka
Shot 5,6,7	that is home to a rich and endemic diversity of flora and fauna. Fed by the fog that shrouds the locale, it is a veritable paradise of rare sights, from sambar deer and mousquitos to rare lorises.
Shot 8,9	Welcome to The Fog, an extraordinary construction based on a conceptual masterpiece tucked away in the lush mountainside, where every convenience of the gentoo life is at hand
Shot 10,11	Where every homestead can enjoy the gurgling sounds of the Ambewela Gya streaming by. Originating in the Hakgala sanctuary, the cleansing waters are infused with the rare medicinal herbs found in the forest.
Shot 12, 13	Located in 31.5 acres of rare Ambewela mountain woodlands, The Fog is home to only 22 three- and four-bedroom mountain forest water villas.
Shot 14, 15	The epitome of ultra luxury and mystical elegance, each gorgeous villa has been specially designed to match the unparalleled lifestyles of an extraordinary few.
Shot 16, 17, 18	Experience first hand and up close, the dynamic climate unique to this locale, as shrouds of mist grow into fog that thickly envelopes the mountains from the sky before breaking into rain that fall to the earth in a sigh of blessings from the Gods.
Shot 19, 20, 21, 22, 23, 24, 25	Enjoy the noble life replete with luxurious comforts fit for royalty. Unwind from the grind in impressively chic and oh so spacious designer villas. Entertain the finest guests in modern style. Experience the best of creature comforts in the midst of a forest, taking in breathtaking views and amazing interactions.
Shot 26, 27, 28, 29, 30	The Fog also hosts a club house where you can enjoy prestigious company and distinguished location. Work out at the state-of-the-art gymnasium, play billiards with friends and sip cocktails while watching the mist convort around the surrounding mountains and the Ambewela Gya flow down the hills.
Shot 31, 32	Always enlosed in wondrous nature, fully catering to your exceptional lifestyle, The Fog is an astounding opportunity to live, invest and grow available only to a limited few.  Call us at 0777 XXX XXX for exclusive details.



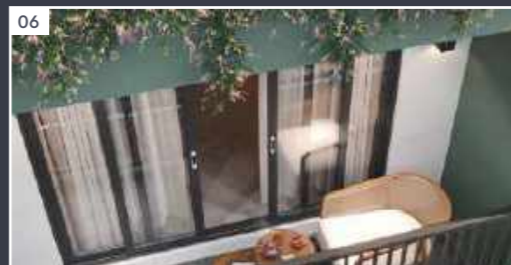
Story Board



VIDEO	AUDIO
Shot 1, 2, 3, 4, 5, 6	<p>Regent Homes has arrived in Malabe.</p> <p>Presenting you our newest project, exclusive homes in an epic locale ... a secluded and private neighbourhood surrounded by lush greenery whilst located in Colombo's suburbs ... where you can enjoy all the amenities and conveniences at an urban setting alongside the quiet serenity of an upscale environment.</p>
Shot 7 (9 shots)	<p>Offering true exclusivity, Regent Homes Malabe is a gated community comprising 6 architecturally designed homes. Each house is of a unique design to suit each owners' needs and personality.</p> <p>Each three- and four-bedroom house is constructed on 6-7 perches of land following ecofriendly principles in an evergreen environment. All homes are outfitted with luxurious accessories and international fittings so you can enjoy the classy living you deserve.</p>
Shot 8, 9, 10	<p>Extraordinary exclusivity situated at only a 5-minute drive to Malabe town where every convenience - from upscale shopping to healthcare and banking, international schools, sports clubs and country clubs - is at hand.</p> <p>Regent Homes Malabe is the newest endeavour following the successful completion of our luxury residences projects in Pelawatte, Nugegoda, Wattala and Ja Ela.</p> <p>Make your dreams come true. Enjoy serenity and convenience, beauty amidst urbanity, privacy as well as ease of life.</p>
Shot 11 ...	<p>Regent Homes, Malabe</p> <p>Experience the mark of true luxury for classy living.</p>



### Story Board



An opportunity to live larger than life..

Enjoy unlimited access all across the island through quick and easy entry to a network of highways. Athurugiriya. Where you can experience the ultra-conveniences of city living in balance with the greenery and fresh air of a rural escape, the harmony of an aspirational lifestyle alongside natural living and beauty.

Welcome to The Space, Athurugiriya.

Located in the heart of Athurugiriya town. An endeavour of grandeur offering 20 ultra-spacious homes adorned with ultra-modern amenities where you can relax, recuperate and live.

Revealing a new chapter in luxury real estate, The Space offers 11 distinct architectural designs to choose from, so you can have the home you envisioned to fulfil your aspirational lifestyle.

Enjoy capacious living spaces that don't restrict life.

Bedrooms brimming with space so you can rest like royalty.

A space for fine dining with your elegant guests.

Kitchens large enough to experience all the joys of cooking.

Bathrooms and powder rooms that provide privacy and comforts.

Take in the awe-inspiring views of glorious paddy fields as you experience the ultimate in luxury living in an exclusive gated community. Facilitated with a private swimming pool, a well-designed play area for children, 24-hour security and a fully carpeted driveway.

Reserve your very own Space with a down payment of 20%.

A number of flexible payment schemes are available.

Call us on 071 915 222 for details.

The Space

Lives life to the fullest.

A project by Bhoomi

A member of Prime Group.



**3D** Architectural  
Visualizations

---

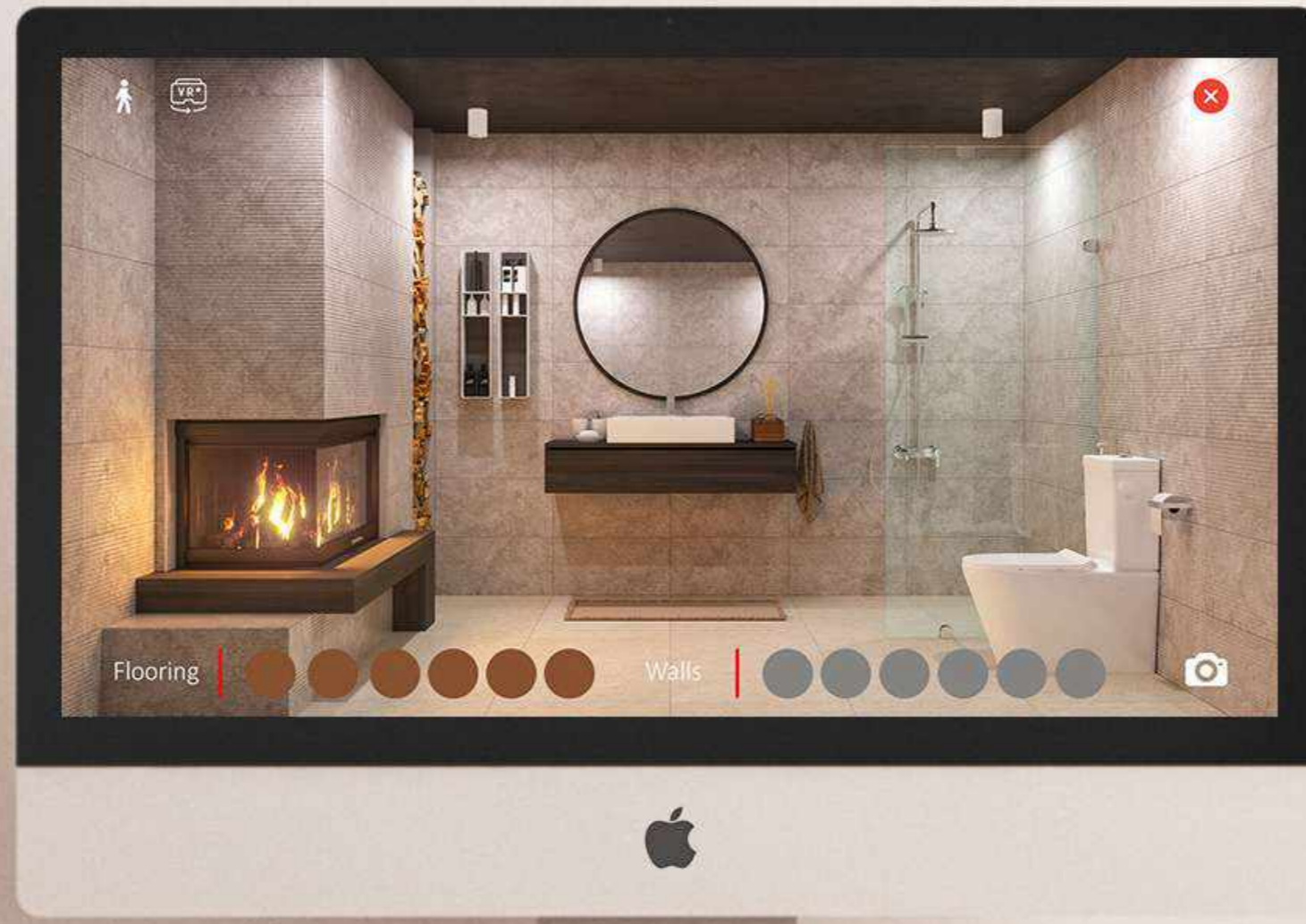
# INTERACTIVE PLATFORMS

---

SELECTED WORK

**2022**







3D Architectural  
Visualizations

AR/VR

SELECTED WORK

2022





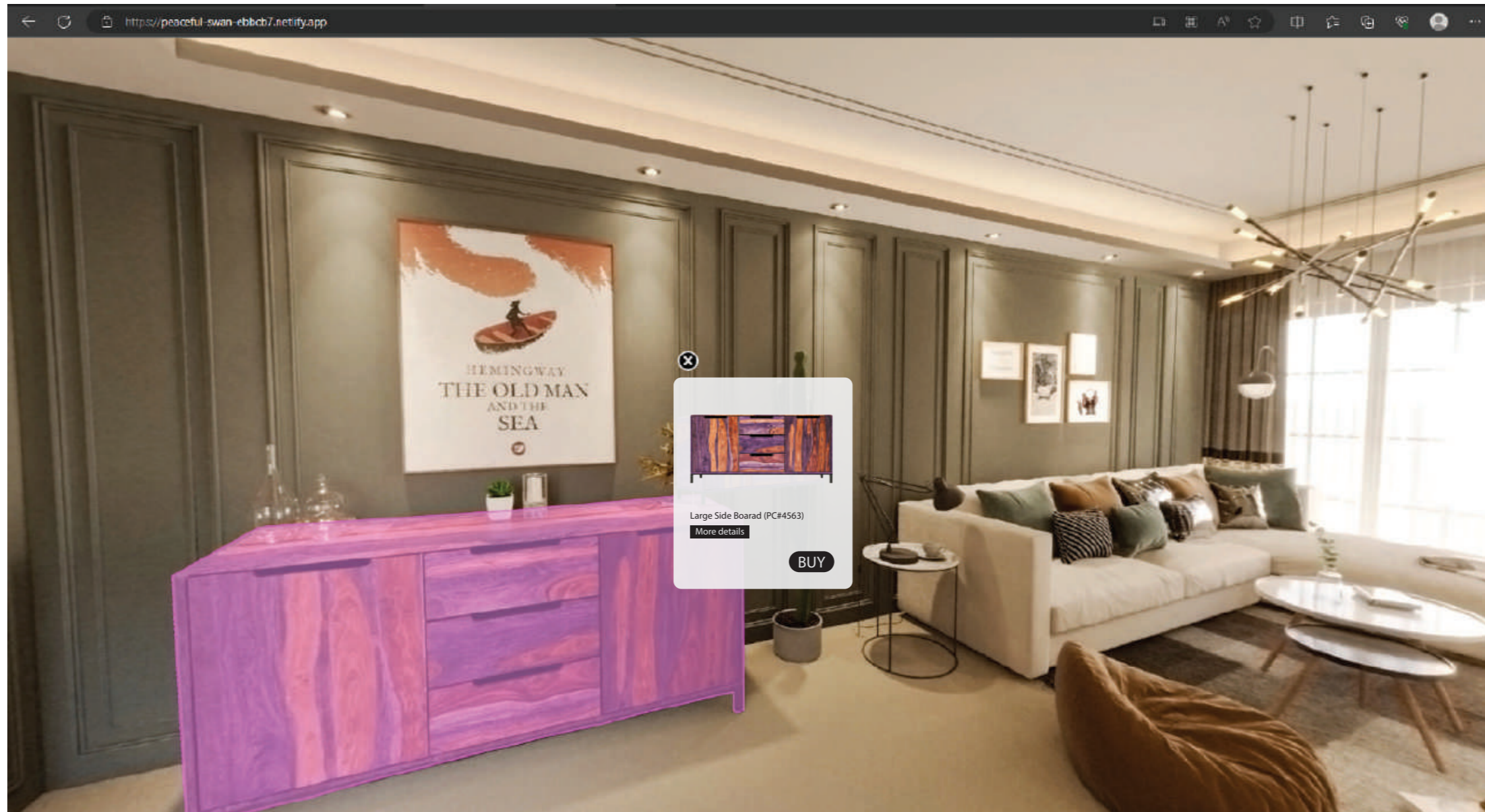


PROJECT | Apartment Interior VR Project  
Seoul, South Korea

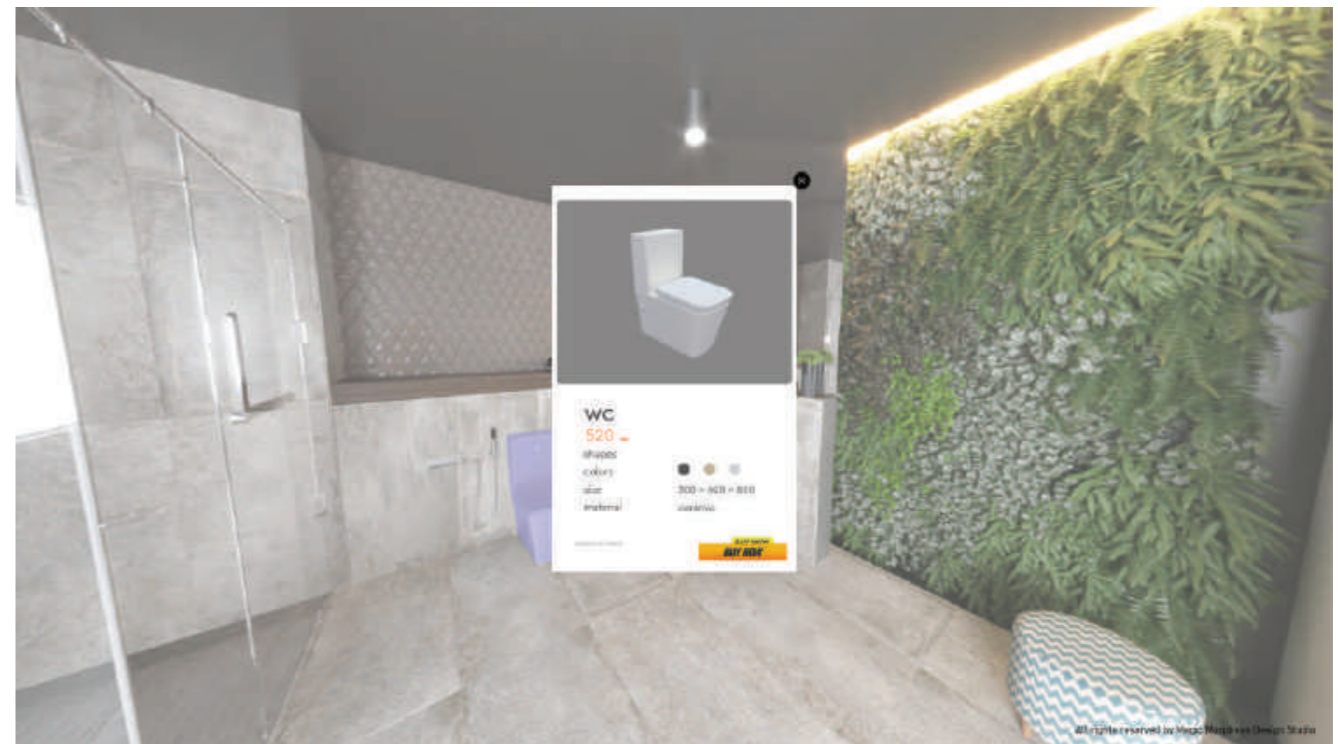


PROJECT | Apartment Interior VR Project  
Seoul, South Korea

# virtual Show rooms



<https://peaceful-swan-ebbc7.netlify.app/>



<https://mm-bathroomvr.netlify.app/>





MAGIC MORPHEUS  
DESIGN STUDIO

## United Kingdom

✉ [hello.plus@dynamicxplus.co.uk](mailto:hello.plus@dynamicxplus.co.uk)

☎ +44 (0)73 609 63818 / +44 (0)33 004 36757

📍 Britannia House, Caerphilly Business Park, Caerphilly  
CF83 3GG, United Kingdom

🌐 [www.dynamicxplus.co.uk](http://www.dynamicxplus.co.uk)

## Sri Lanka

✉ [team@magicmorpheus.com](mailto:team@magicmorpheus.com)

☎ +94 71 666 9739

📍 No.135, Thisara Plaza, Dutugemunu Street,  
Kohuwala, 10250, Sri Lanka

🌐 [www.magicmorpheus.com](http://www.magicmorpheus.com)

find us

