



*Vintage*  
sofa company

# Fast Track

Beautiful Furniture, Delivered From Stock

Malone Large 2 Seater FT

w:182 x d:84 x h:84  
MALONEPATCH

# Fast Track

all you need to know...



## What is Fast Track?

Fast Track means you can order something with much shorter lead times instead of waiting for a custom-made piece to go through the manufacturing process. These items are available in our most popular shapes and colors, ensuring that you'll find something you love. Additionally, everything produced within this range maintains our usual high quality and exceptional finishes.



## How about delivery times?

Delivery times are dependent on the item you are ordering. We endeavour to hold our complete collection in stock for immediate dispatch to your retailer. Fast Track items should be in stock and therefore we are able to offer these on shorter lead times. For bespoke pieces there are longer lead times for manufacture and delivery but we can advise you of these when you order.



## Can I order bespoke items?

We can customise many of the shapes and designs that we already have. We have an extensive range of fabrics and leathers in many different articles and finishes that allow you to customise your individual piece of furniture to your taste, wood finishing options can also be selected, for custom bespoke orders design and development of each piece is a longer process.

FRONT COVER IMAGE: Chester Grange 2 Seater FT (p7)  
w:200 x d:95 x h:85 PATGRANGE

## Index

Patchwork	6-9
Hunting Lodge	10-13
Moreland	14-15
Howden, Tropical Leaf	16-17
Harrington Tweed	18-19
Leather & Bean Bags	20-21
Sustainability	22-23



Barnard Patchwork Chair FT  
w:80 x d:81 x h:101  
XBARN1



Harlequin Patchwork FT  
w:200 x d:95 x h:85  
PATCHCHESTER - 2 Seater  
w:235 x d:95 x h:85  
PATCHCHESTER-3SEA - 3 seater



Gotham Harlequin Chair FT  
w:80 x d:92 x h:98  
PATCHGOTH

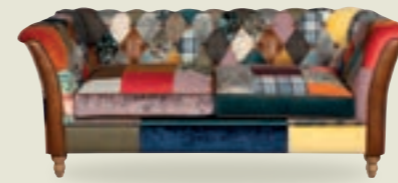


## Patchwork

Elevate your living space with the charm and vibrancy of our patchwork furniture range. We combine a unique blend of rich textures and colours, from muted plaids to bright pinks to create one-of-a-kind pieces that are both eye catching and sumptuously comfortable. Perfectly suited for both contemporary and classic interiors, our vintage patchwork furniture brings warmth, personality and an eclectic touch to any room.



**Harlequin Patchwork FT**  
w:200 x d:95 x h:85  
PATCHCHESTER - 2 Seater  
w:235 x d:95 x h:85  
PATCHCHESTER-3SEA - 3 Seater



**Rutland Harlequin 2 Seater FT**  
w:186 x d:87 x h:77  
PATRUTLAND02



**Alsace Petit 2 Seater FT**  
w:128 x d:80 x h:84  
XALSPET02



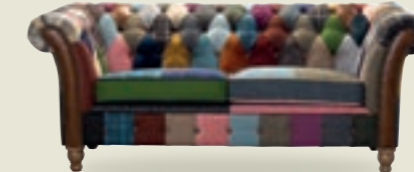
**Bamford 2 Seater Sofa FT**  
w:144 x d:90 x h:88  
XBAMFORD02



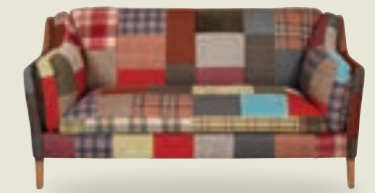
**Prestbury Patchwork FT**  
w:200 x d:95 x h:85  
PRESPATCH



**Barnard Patchwork 2 Seater FT**  
w:140 x d:81 x h:101  
XBARN2



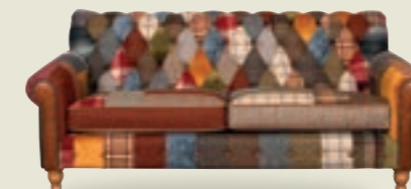
**Chester Grange 2 Seater FT**  
w:200 x d:95 x h:85  
PATGRANGE



**Malone Large 2 Seater FT**  
w:182 x d:84 x h:84  
MALONEPATCH



**Harlequin Chester Club 2 Seater FT**  
w:200 x d:95 x h:85  
CHCPATCHHARL



**Dickinson Sofa FT**  
w:186 x d:98 x h:80  
DICKINSON-L2SEA Dickinson Medium Sofa  
w:206 x d:98 x h:80  
DICKINSON-M2SEA Dickinson Large Sofa



Bamford Chair FT  
w:83 x d:90 x h:88  
XBAMFORD01



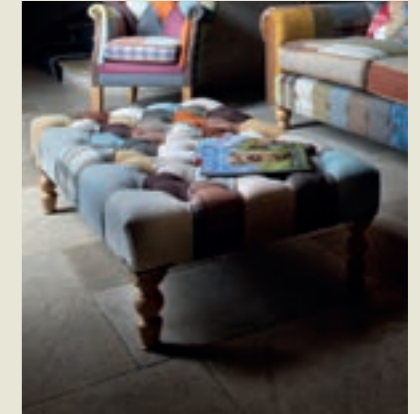
Patchwork Governor Chair FT  
w:70 x d:70 x h:73  
FTGOVPATCH01



Alsace Petit Chair FT  
w:82 x d:80 x h:84  
XALSPET01



Kensington Footstool FT  
w:55 x d:60 x h:25  
XKENSTPATCH



Banquette Footstool FT  
w:120 x d:70 x h:36  
FTBANPATCH



Gotham Harlequin Chair FT  
w:80 x d:92 x h:98  
PATCHGOTH



Gotham Harlequin Chair FT (original spec)  
w:80 x d:92 x h:98  
CHCGOTHARL



Alderley Leather Patchwork FT  
w:80 x d:92 x h:98  
ALDERPATCH



Barnard Patchwork Chair FT  
w:80 x d:81 x h:101  
XBARN1



Dickinson Chair FT  
w:80 x d:90 x h:97  
DICKINSON-CH



Kensington Chair FT  
w:88 x d:88 x h:114  
XKENPATCH

Also available - Footstool See P9.



# Hunting Lodge

Bring understated elegance to your home with our Hunting Lodge Harris Tweed furniture. Earthy tones and fine craftsmanship come together to ensure a perfect fit for both traditional or modern interiors. Our Hunting Lodge range features studded details, turned wooden feet and soft leather to help bring warmth and elegance to your home.



**Haworth FT**  
w:164 x d:85 x h:94  
FTHAWORTH-2STR



**Chester Lodge FT**  
w:200 x d:95 x h:85  
XCHL02 - 2 Seater



**Milford FT**  
w:186 x d:87 x h:77  
XMIL02 - 2 Seater



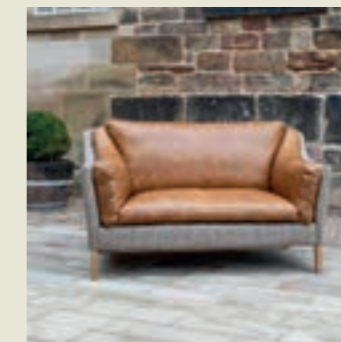
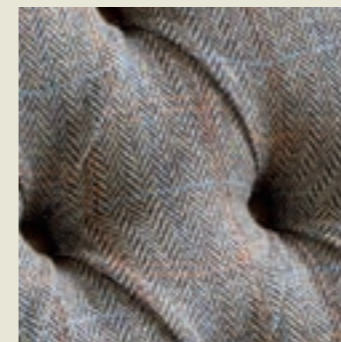
**Malone FT**  
w:182 x d:84 x h:84  
XMLHTW02\_PL - 2 Seater



**Hexham FT**  
w:155 x d:81 x h:101  
XHEX2 - 2 Seater



**Granby FT**  
w:186 x d:87 x h:77  
XGRA-HTW02 - 2 Seater





**Buckingham Chair FT**  
w:88 x d:88 x h:114  
XBUCK01



**Kew Chair FT**  
w:83 x d:90 x h:105  
XKEW01



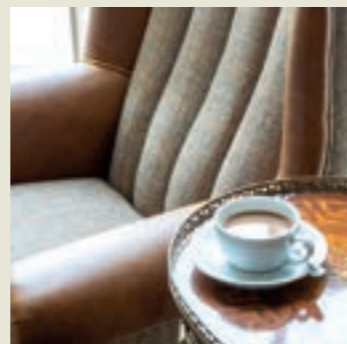
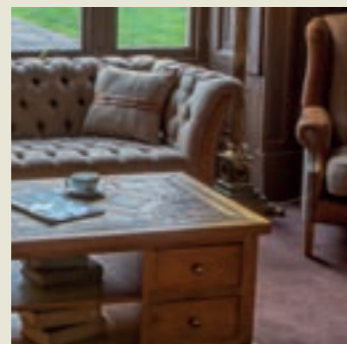
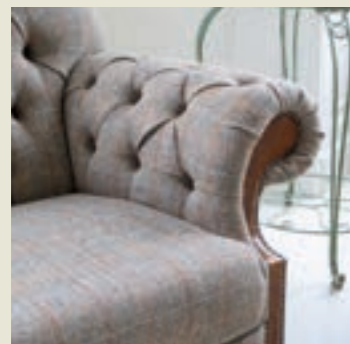
**Fluted Wing Chair FT**  
w:83 x d:90 x h:105  
XFLUWNG



**Winchester Chair FT**  
w:88 x d:88 x h:114  
XWCH01



**Hexham Chair FT**  
w:80 x d:81 x h:101  
XHEX1



**Buckingham Chair FT**  
w:88 x d:88 x h:114  
XBUCK01

**Manor Range Nest of 2 Tables**  
w:440 x d:440 x h:420  
WM10  
(Not in the Fast Track Range)



## Moreland

Subtle herringbone patterns and warm, earthy tones create a sense of classic elegance, while the deep-buttoning and hand-finished detailing adds luxury. The Moreland range offers versatile designs that combine style with exceptional comfort. Whether it's one of our cozy armchairs or the Chester Club sofa, the Moreland Harris Tweed collection transforms any space.



**Chester Club FT**  
w:200 x d:95 x h:85  
XCHC02 - 2 Seater



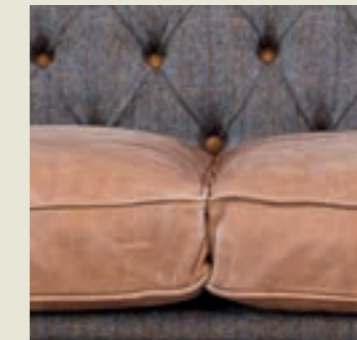
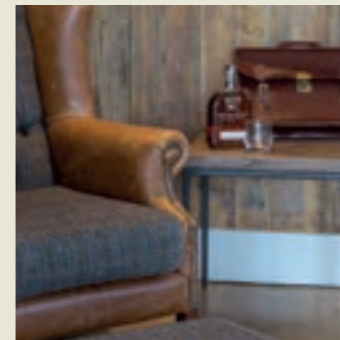
**Hexham Chair FT**  
w:80 x d:81 x h:101  
XHEX1-HTP



**Kensington Chair FT**  
w:88 x d:88 x h:114  
XKEN01



**Wing Chair FT**  
w:83 x d:90 x h:105  
XWNG1





## Howden – Tropical Leaf

Available as a stylish sofa and chair, this collection combines bold design with exceptional comfort. With two striking fabric options: the Kingfisher, with rich blues that evoke serene tropical waters, or the Toucan, featuring deep reds inspired by the vivid hues of the rainforest. Both fabrics showcase intricate leaf patterns, bringing a sense of nature's beauty into your home.



**Howden Sofa FT – Toucan**  
w:128 x d:80 x h:84  
XHOWD2T - 2 Seater  
*Topical Leaf Toucan*



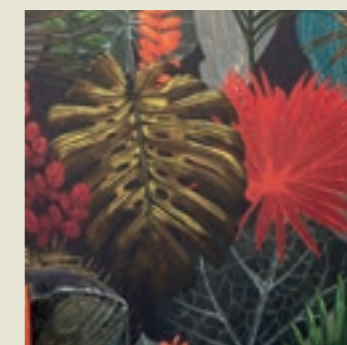
**Howden Sofa FT – Kingfisher**  
w:128 x d:80 x h:84  
XHOWD2K - 2 Seater  
*Tropical Leaf Kingfisher*



**Howden Chair FT – Toucan**  
w:80 x d:80 x h:84  
XHOWD1T  
*Topical Leaf Toucan*



**Howden Chair FT – Kingfisher**  
w:80 x d:80 x h:84  
XHOWD1K  
*Tropical Leaf Kingfisher*



*Topical Leaf Toucan*



*Tropical Leaf Kingfisher*



## Harrington Tweed

Featuring a sophisticated blend of warm classic tweed and luxurious leather accents, this collection effortlessly combines style and durability. Harrington Tweed offers versatile options to suit any room. Perfect for creating a warm and inviting atmosphere, the Harrington Tweed range exudes charm. Whether you're curling up in the wing armchair or hosting guests on the relaxing sofa, the Harrington Tweed collection delivers unmatched comfort and lasting style.



**Buxton Club**

w:196 x d:90 x h:88  
ZBRAMFORD-2SEAWL - 2 Seater  
Harrington Tweed



**Edale Sofa**

w:197 x d:94 x h:81  
ZEDALE-2SEAWL - 2 Seater  
Harrington Tweed



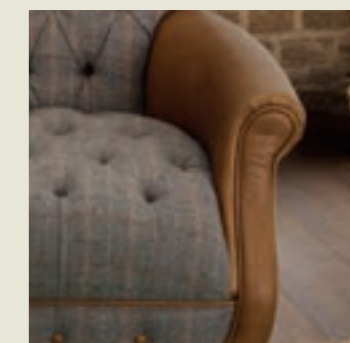
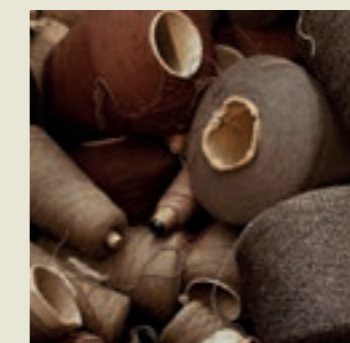
**Westminster Chair**

w:80 x d:92 x h:98  
ZWESTMINCH-WLLEA3L  
Harrington Tweed



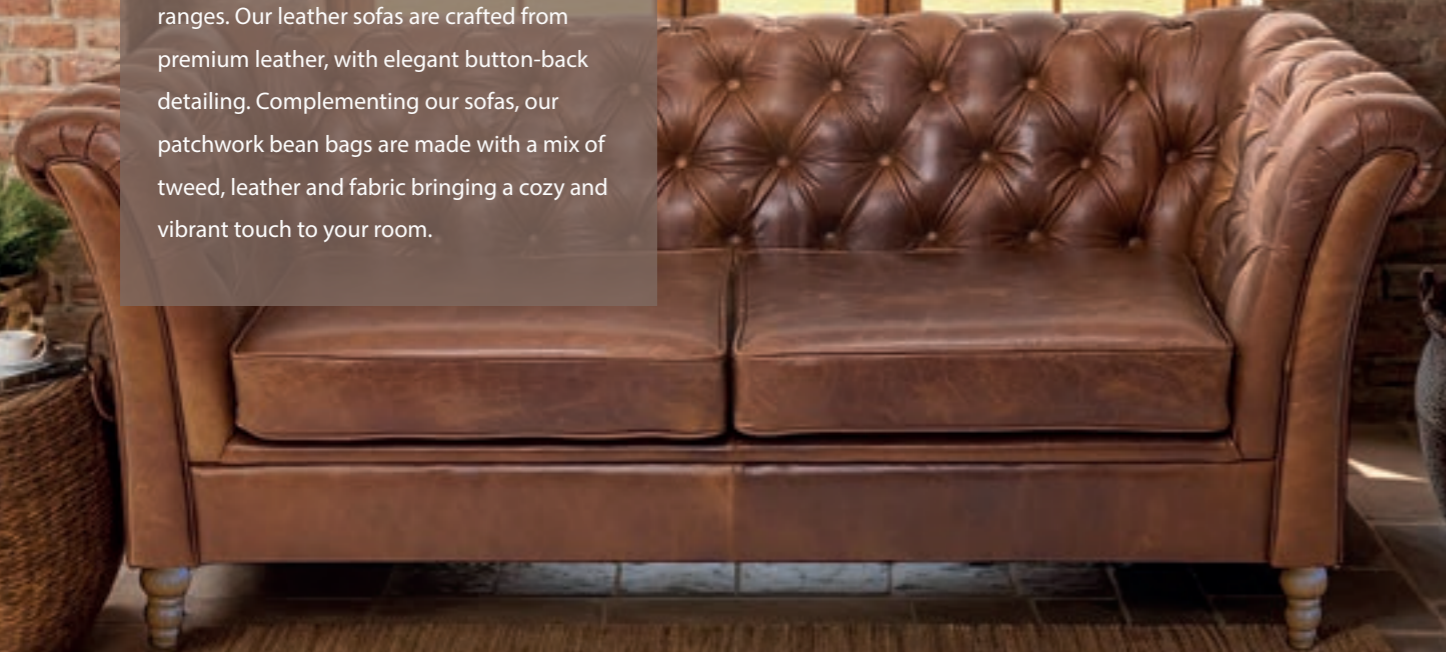
**Westminster Wing Chair**

w:82 x d:90 x h:107  
ZWESTWING-WLLEA3L-CN  
Harrington Tweed



## Leather & Bean Bags

Discover the perfect blend of luxury and comfort with our Leather Sofa and Bean Bag ranges. Our leather sofas are crafted from premium leather, with elegant button-back detailing. Complementing our sofas, our patchwork bean bags are made with a mix of tweed, leather and fabric bringing a cozy and vibrant touch to your room.



**Framed Cube Stool FT**  
w:43 x d:43 x h:47  
FRAMEDBEAN-WL  
*Mixed wool & leather*



**Bean Bag FT**  
w:50 x d:50 x h:50  
BEANLWM  
*Mixed wool & leather*



**Beachball Bean Bag FT**  
w:55 x d:55 x h:30  
BEACH1  
*Mixed wool & leather*



**Granby Sofa FT**  
w:186 x d:87 x h:77  
XGRA-TAN02 - 2 Seater



**Chester Special FT**  
w:200 x d:95 x h:85  
CHESTER200

## 10 reasons to choose wool

1. Pure wool is 100% natural, 100% renewable, 100% sustainable, 100% biodegradable, if you love the planet - use more wool!
2. It is warm but it is cool too because it adapts to the wearer - that's why sheep are so snug and content!
3. Wool is flame retardant and will often self-extinguish. Fire-fighters like it because it produces less smoke and toxic fumes - making it a safer choice for the home.
4. Strong and long lasting - wool carpets and rugs can take lots of heavy wear and are known to look better for longer - quality always lasts!
5. Easy care & stain resistant - The protective waxy coating on wool fibres makes wool products resistant to staining and they also pick up less dust as wool is naturally anti-static. Innovations in white goods and wool processing mean that wool items are no longer hand-wash only. Many wool products can now be machine-washed and tumble dried.
6. Wool has hypoallergenic and anti-bacterial properties - it makes the air that we breathe cleaner and better.
7. UV protection - As a natural fibre, evolved over millions of years to protect sheep against the elements, wool absorbs UV radiation providing protection from the sun.
8. Insulate with it, soundproof with it, wear it, walk on it, wrap things with it. The world's oldest renewable fibre is also the most versatile and modern.
9. Sheep are amazing - they graze peacefully, grow wonderful wool, we use it to make beautiful textiles and the whole process begins again... no depletion, just sustainable and sensible.
10. Wool is smarter than any other fibre - it travels a long way on its journey from the sheep to finished product but it never loses any of its remarkable qualities and it looks and feels fabulous too.

SUSTAINABILITY

All of our wool growers respect the 5 animal freedoms & are mulesing\* free

- 1 Freedom from hunger and thirst
- 2 Freedom from discomfort
- 3 Freedom from pain & disease
- 4 Freedom from fear & distress
- 5 Freedom to express normal behaviour



\*Mulesing is a practice in which skin is removed from the rear of the sheep, to prevent flies from laying their larvae on the sheep. This process is carried out without anaesthetic. All our wool is produced without mulesing.

STEEL  
 TABLES  
 GREY OILED  
 VELVET  
**Vintage**  
 sofa company  
 RECYCLED  
 PATCHWORK  
 MANGO WOOD  
 SOFAS  
 SLEEPER WOOD  
 LEATHER  
**Carlton**  
 furniture  
 CERATO  
 BENCHES STOOLS  
 CHAIRS  
 COPPER  
 ANILINE  
 ENVIRONMENTAL  
 SUSTAINABLE  
 PLEASE RECYCLE  
 THIS BROCHURE



**Vintage**  
 sofa company