

THE QUARTERLY

SPRING 2026



VIEW OUR
NEW STYLEBOOK



INTERIORS | LIFESTYLE | NEW RANGES | TOP TRENDS

SPRING 2026 CONTENTS

NEW LAUNCHES

MEET THE
MAKERSPOTLIGHT
ON...13
BED GUIDE

22

28
OCEANS APART
GALLERYBASKET
SHOPPING

Welcome to Bluebone

SPRING 2026

A season of exciting new launches, this issue celebrates our latest collections as we prepare to launch over 150 new products for 2026, including the Mammoth Reclaimed Teak Dining table featured on the cover, and many more dining, living and homeware lines.

We return to bedroom furniture for the first time in nearly a decade, launching eight new bed models, check our Bed Supplement in the centre pages.

Discover our 'Meet the Maker' feature on page 12, highlighting the talented artisan behind our reclaimed teak Coniston and Casa ranges.

On page 28, explore our innovative Oceans Apart Gallery concept, transforming retail spaces into immersive brand experiences.

And turn to the back cover for a glimpse of Spring, featuring our charming new garden sculptures.

Bluebone are at January Furniture Show – HALL 1E Stands H10 & H20.



NEW BRANCHWOOD



BALI LIVING







RECLAIMED MAMMOTH





MEET THE MAKER

We first met Hendrik back in 2020, he made our Kinsfolk Story Dolls, from a tiny workshop in East Java. They were a little homeware accessory that ran for a couple of seasons.

Hendrik specialises in re-purposing old waste-wood or reclaimed teak, taken from dismantled buildings, de-commissioned fishing boats and old wharfs and jetties. It became clear that he was a competent carpenter, so we developed a collection of small furniture pieces for him to produce.



His craftsmanship was excellent, and his finish immediately struck a chord with UK market trends. The rustic pared back natural teak was the key to the popularity of our CASA range, which is still a key Bluebone collection.

Du to the success of his furniture, it was becoming difficult for Hendrik to keep up with demand, so Bluebone invested in his business, which enabled him to increase output and enabled us to create our current Coniston range, featured on pages 8 and 9.

This year we added the Ovoid and Bench dining tables and a statement slab console, which have been among our best sellers in the past six months, and there are more designs launching for Spring 2026.

Hendrik has never been busier, so the moral of the story – from small Kinsfolk dolls, great reclaimed teak furniture grows!



BED GUIDE

Making a welcome return to Bedroom, Bluebone launch eight new bed models for JFS 2026.



COVER VERHANG
PG 3 HUSKY
PG 4 ELGIN
PG 5 WEFT
PG 6 CAROB
BACK OLIVE

On the Cover, VERS19 Verhang Versatile Headboard - Shortlisted for Design Innovation award - concept mango wood slatted panel fits double, king, superking divan, with detachable shelves and hooks.



NORFOLK
HUSKY





There are two Elgin natural bed frames – four poster or no-poster. With refined details, slender rounded posts and a pared back herringbone parquet headboard, they showcase the natural beauty of teak wood.



ELGIN



WEFT



There are two Weft Beds, Herringbone and Twist. Both feature contemporary headboard designs, created from durable woven paracord. These beds offer a lightweight yet strong alternative to traditional upholstery, combining craftsmanship with subtle, modern patterning.





Crafted from solid mango wood in a soft grey wash, our Carob bedroom and dining ranges combine a sculptural elegance with natural warmth. The seed-pod inspired legs and posts offer a tactile, organic charm. The new bedroom collection boasts a stunning king size bed and accompanying dressing table, bedside and clothes valet. Living and dining pieces and two beautiful mirrors complete the range.







IN THE SPOTLIGHT: MIRRORS



LAW188
RUSTIC MONUMENTAL MIRROR
W: 130 H: 250 D: 9/20



CASA59
ROUND SEAGRASS MIRROR
W: 80 H: 80 D: 6



LAW181
RUSTIC MAMMOTH MIRROR
W: 200 H: 200 D: 15



ENG177-GW
WIGGLE MIRROR - GREYWASH
W: 60 H: 90 D: 5



ENG177XL
WIGGLE MIRROR - XL - GREYWASH
W: 90 H: 180 D: 5



ENG178
ARUBA BOBBLE MIRROR
W: 80 H: 80 D: 5



CARO12-GW
HALF MOON MIRROR - GREYWASH
W: 76 H: 76 D: 5



CARO11-GW
OVAL MIRROR - GREYWASH
W: 60 H: 120 D: 5



ENG170
ARUBA OVAL MIRROR
W: 120 H: 5 D: 60



MLN63
MANGO LOUNGE MIRROR SHELF
W: 55 H: 85 D: 22



LAW191
GRACE OVAL MIRROR
W: 60 H: 90 D: 6



ENG081
RECYCLED DRUM MIRROR SHELF
W: 56 H: 56 D: 8



LAW183
WAVY MIRROR
W: 50 H: 50 D: 5



KILN01-L
VELODROME MIRROR - LAVA
W: 81 H: 81 D: 10



KK104
IONA ROUND MIRROR
W: 60 H: 60 D: 7



CASA54
ROOK MEDIUM CANDLESTICK
- CREAM MARBLE
W: 9 H: 20 D: 9

CASA53, CASA52
ROOK SMALL CANDLESTICK -
BLACK MARBLE / GREY-BROWN
MARBLE
W: 9 H: 15 D: 9

New for 2026 – rustic textured
vases, natural shades of marble,
teak peanut bowl and organic
pod, elegant swans and herons,
and our adorable little wooden
sheep.

CASA55
TRAY - GREY-BROWN MARBLE
W: 25.5 H: 2.5 D: 25.5

IN THE SPOTLIGHT: ACCESSORIES



COLL61-B
SANTI BOWL - BLACK
W: 25 H: 20 D: 25



KILN42-SB, SR, MB, MR
HAMPTON POT - SML/MED RED/BLUE
W: 15/19 H: 22/32 D: 15/19



KILN40, KILN41
DESTY POT, PRITA POT
W: 30/25 H: 20/30 D: 30/20



CASA50
ELEPHANT BOOK ENDS
W: 21 H: 17 D: 6



CASA56-S
TUSK SMALL CANDLESTICK SET
W: 12/10/9 H: 50/40/30 D: 12/10/9



CASA58
SET OF OWL BOOK ENDS
W: 13.5 H: 15 D: 6.5 each



COLL55
SET OF 3 HERONS
W: 25/22/18 H: 70/55/40 D: 15/15/12



COLL57
PAIR OF SHEEP
W: 13/10 H: 8/7 D: 8/6



COLL59
SET OF 2 SWANS
W: 20 H: 36 D: 13



COLL60-N
PEANUT BOWL - PACK OF 2
W: 40 H: 12 D: 15



COLL58-N
POD TOWER
W: 24 H: 100 D: 24



CASA57
SIMBA STOOL
W: 30 H: 30 D: 45



GREE65-B, GREE65-W
BIRD NAPKIN RING - BLACK/WHITE
W: 10 H: 7 D: 4



GREE66
SATURN NAPKIN RING
W: 7 H: 3 D: 7



GREE67
SEAGRASS PLACEMAT
W: 45 H: 35 D: 0.2



BASKET SHOPPING



BSK19
SET OF 3 TIGER BASKETS
W: 40/34/32 H: 41/36/29 D: 40/34/32



BSK18-T
SET OF 2 DOUBLE WAVE BASKETS
W: 45/35 H: 46/34 D: 45/35



BSK20
SET OF 2 ZEBRA BASKET
W: 41/31 H: 45/36 D: 41/31



BSK03
SET OF 3 WHITE TOP BASKETS
W: 39 H: 57 D: 39



BSK04
SET OF 3 GREY TOP BASKETS
W: 39 H: 57 D: 39



BSK07
SET OF 3 CHARCOAL BASKETS
W: 39 H: 57 D: 39



BSK06
WHITE TOP SEAGRASS BASKET
W: 32 H: 33 D: 32



BSK05
BANANA RAFFIA BASKET
W: 32 H: 33 D: 32



BSK10
SET OF 2 CROFTER BASKETS
W: 49/39 H: 46/40 D: 49/39



BSK11
SET OF 4 BANANA BASKETS
W: 25/30/35/40 H: 20/25/30/35
D: 25/30/35/40



BSK12
SET OF 3 ARROW BASKETS
W: 25/35/40 H: 28/34/40 D: 25/35/40



BSK15
SET OF 2 ORGANIC BASKETS
W: 42/54 H: 43/53 D: 42/54



BSK16
SET OF 2 ROBUSTA BASKETS
W: 45/50 H: 32/28 D: 45/40



BSK18
SET OF 2 DOUBLE WAVE BASKETS
W: 45/35 H: 46/34 D: 45/35

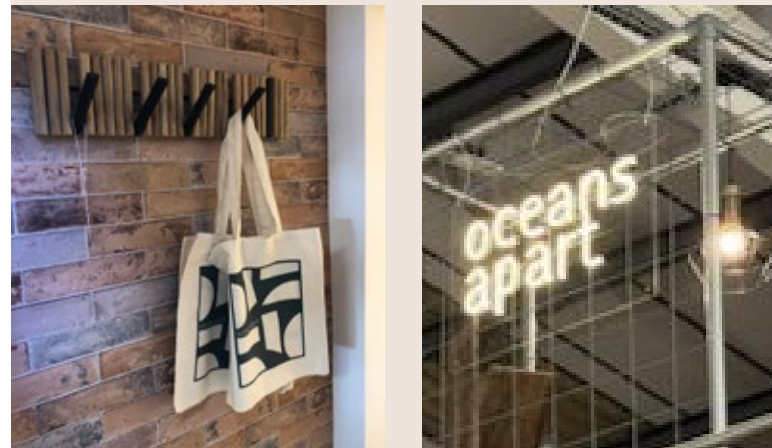


BSK21
SET OF 3 NATURAL BASKETS
W: 46/42/38 H: 45/41/37 D: 46/42/38

OCEANS APART GALLERY

Our Oceans Apart Gallery concept is a branded in-store experience designed to showcase the Bluebone collection in a way that inspires customers and elevates retail performance. By curating products within a cohesive lifestyle setting, the gallery creates a strong visual impact and enhances customer engagement. Retailers who have adopted the Oceans Gallery concept have seen a considerable uplift in sales — around 500%, with floor space performing up to five times more effectively than traditional displays.

Each gallery is tailored to fit the retailer's available space.



We collaborate closely to design a bespoke floorplan, complete with paint colour recommendations, neon signage, and branded POS materials such as pens and bags if required. This attention to detail ensures the gallery not only looks stunning but also aligns with the store's overall aesthetic.

We continue to monitor and review product performance within the gallery to ensure each piece is contributing to the display's success. Retail partners also enjoy a range of perks, including exclusive display discounts, hands-on support during installation, and early access to new product launches. The Oceans Gallery offers retailers a compelling point of difference, driving sales through an immersive, lifestyle-led Bluebone experience.



Opening night at Wardens, Newtownards with Stuart and Keith



Floorplan for Hunters Ayr



Behind the scenes of our lifestyle photo shoots is a blend of creativity, teamwork, and a touch of magic.

Shot in the stunning setting of Kate and John's gorgeous home, our photography and styling duo, Tim and Debs from timainsworth.com, craft aspirational spaces that truly bring our products to life.

Every detail is carefully considered — from styling each scene to capturing the perfect light. It's a full team effort, and once the shoot wraps, we ensure the house is left exactly as we found it. With a little editing finesse, the result is a collection of beautiful, inspiring lifestyle images.

BEHIND THE SCENES



Bramble Co are a hugely successful U.S. furniture brand. Their pieces are designs without confines, blurring the lines between sleek elegance and timeless style.

Joined by Steven Shell, a design maverick in his own right, the result is a fusion of classic American comfort and British sophistication.

Bluebone are delighted to represent Bramble in the UK and Ireland, and our sales team are trained to help design your bespoke container. Available in 20ft and 40ft, each piece is made to order, with unrivalled quality of build and a myriad of colours, features and hand painted finishes.

Contact us at sales@bluebone.co.uk for more information.



INTO THE GARDEN



GRC87B - Tortoise

GRC85B-M - Daschund bench

GRC86B - Spiral shell umbrella stand

GRC22-SS - Yoga lady - shoulderstand

GRC22 - Yoga lady

GRC22-SIT - Yoga lady - situp

GRC90-SB - Ribbed pot - soft brown

CONI19 - Coniston double planter

GRC94-AG - Frog - antique green



Our team are available to help with any queries or take your order Monday-Friday, 8am-4.30pm



Shop online www.bluebone.co.uk



Place your order over the phone on 0161 3308959



Email our team at sales@bluebone.co.uk

All photography remains the property of Bluebone and cannot be reproduced in part or full without prior permission.

Bluebone, River Mill 2, Park Road, Dukinfield, SK16 5PD

www.bluebone.co.uk