



**DAUGHTERS**  
*of the* **GANGES**

ethical creations from india

# DAUGHTERS *of the* GANGES

ethical creations from india

Daughters of the Ganges is a socially conscious brand that brings to you handcrafted and ethically created products from India.

Based in London and New Delhi, all our products are designed in collaboration with local artisans that lovingly handcraft contemporary designs using traditional techniques.

We are proud to have a WFTO certified artisan partner and believe that we can make a difference to vulnerable societies by working closely with local businesses and supporting them as they flourish.

With your purchase, we can join hands and be involved in significant changes that are brought about by empowering artisans communities through fair trade.



## **Jasmine Necklace**

PH-373

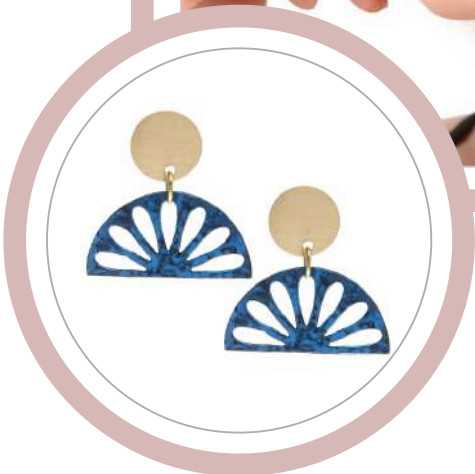
Colour: Gold and Green

Chain Length: 60cm Extension: 5cm

Pendant Length: 2.5cm Width: 3 cm

Brass with Patina





**Helen Earrings, Blue**

PH-383B

Colour: Gold and Blue  
Length: 3cm Width: 3cm  
Brass with Patina



**Helen Necklace, Blue**

PH-384C

Colour: Gold and Blue  
Chain Length: 60cm Extension: 5cm  
Pendant Length: 1.5cm Width: 3cm  
Brass with Patina





**Helen Earrings, Green**

PH-383A

Colour: Gold and Green

Length: 3cm Width: 3cm

Brass with Patina



**Helen Necklace, Green**

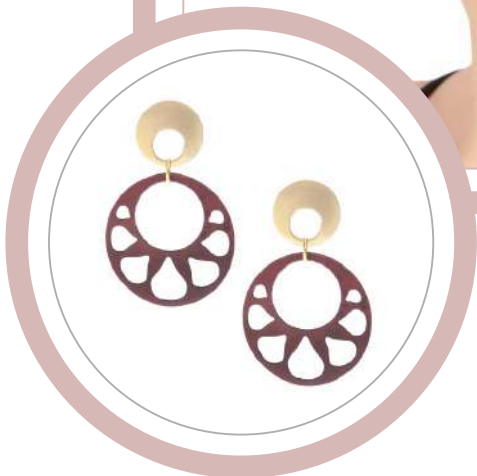
PH-384B

Colour: Gold and Green

Chain Length: 60cm Extension: 5cm

Pendant Length: 1.5cm Width: 3cm

Brass with Patina



**Rani Earrings, Red**

PH-386

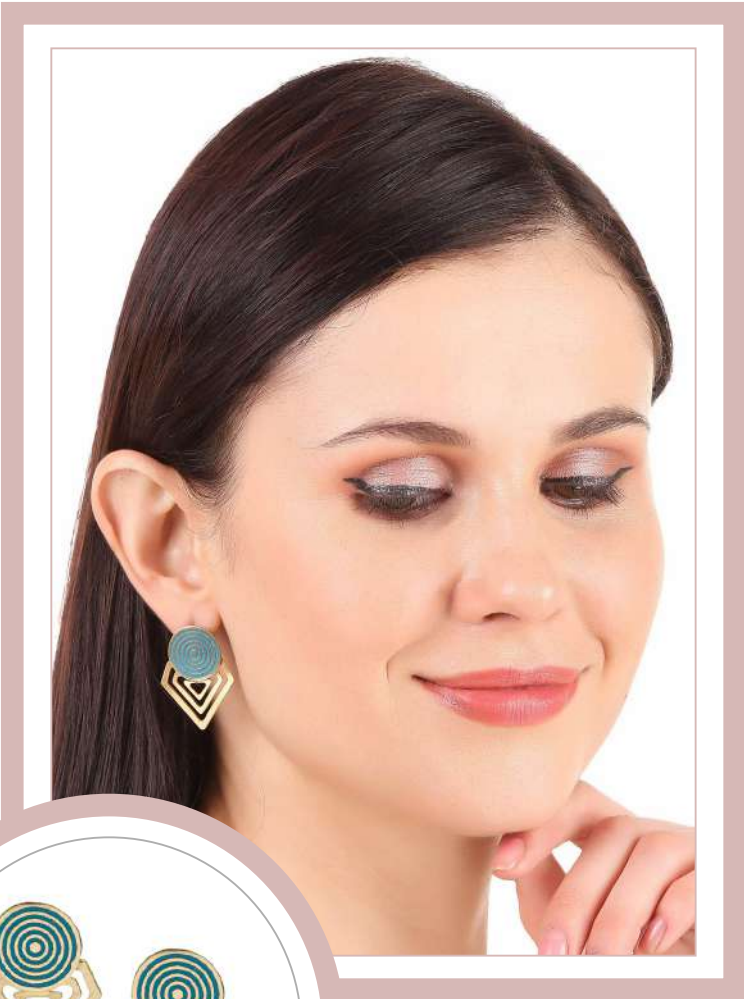
Colour: Gold and Red  
Length: 4.5cm Width: 3cm  
Brass with Patina



**Helen Necklace, Red**

PH-384A

Colour: Gold and Red  
Chain Length: 60cm Extension: 5cm  
Pendant Length: 1.5cm Width: 3cm  
Brass with Patina



**Brinda Earrings**

PH-374

Colour: Gold and Blue  
Length: 3.5cm Width: 2.5cm  
Brass with Patina



**Brinda Necklace**

PH-375

Colour: Gold and Blue  
Chain Length: 60cm Extension: 5cm  
Pendant Length: 3.5cm Width: 2.5cm  
Brass with Patina





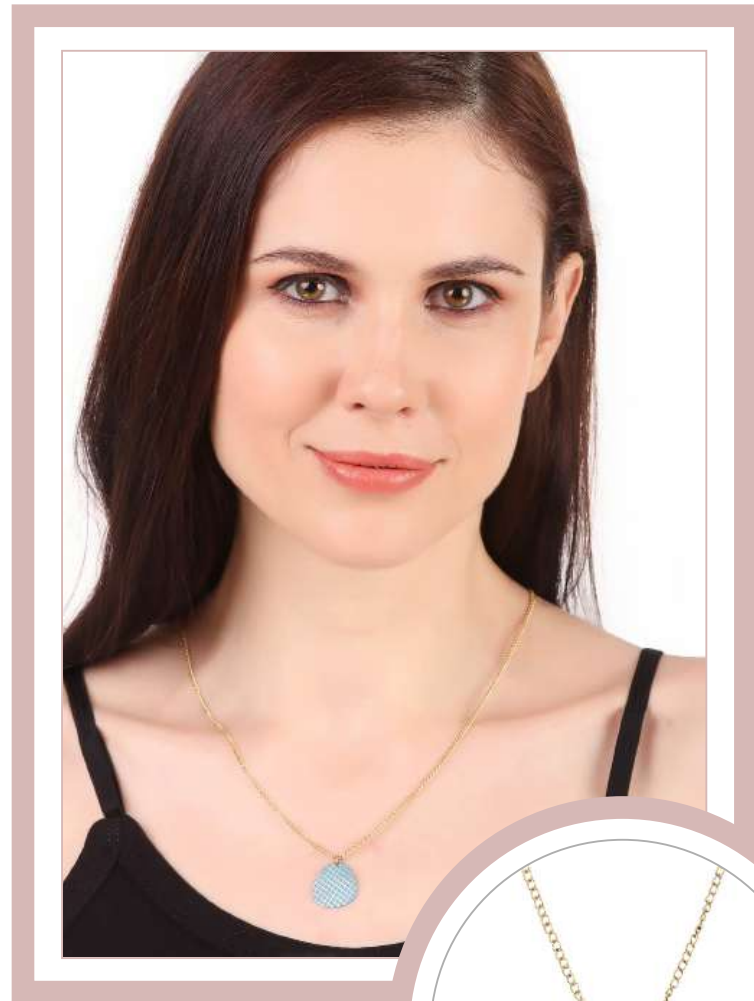
**Hema Drops, Blue**

PH-376

Colour: Gold and Blue

Length: 4.5cm Width: 1.5cm

Brass with Patina



**Maya Necklace, Blue**

PH-389C

Colour: Gold and Blue

Chain Length: 60cm Extension: 5cm

Pendant Length: 2cm Width: 1.7cm

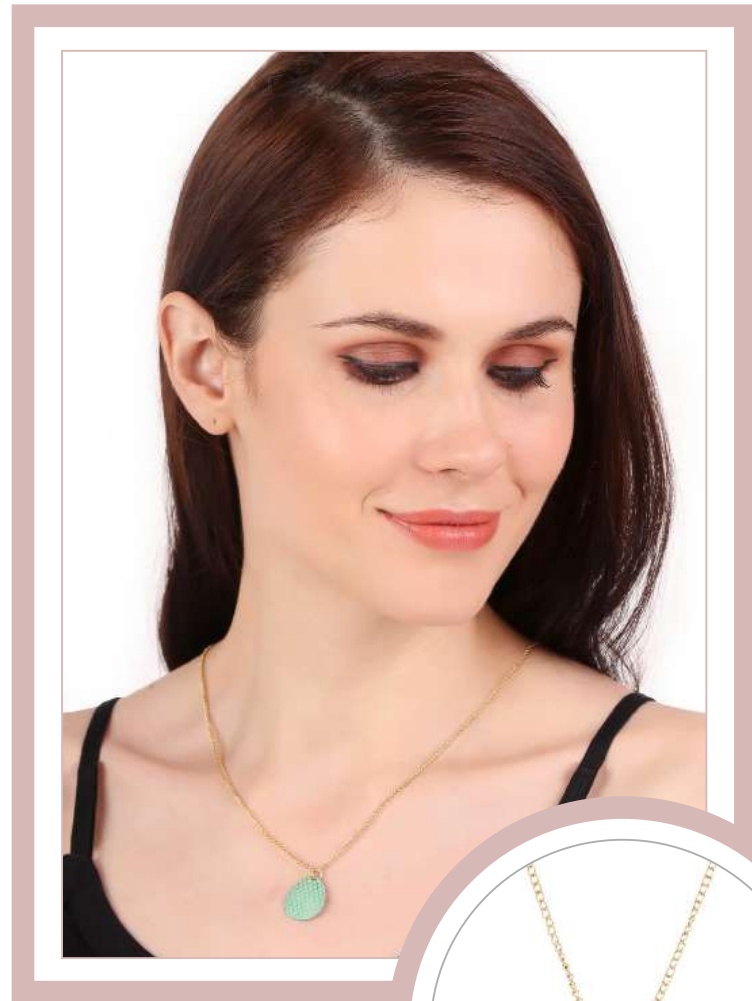
Brass with Patina



**Maya Earrings, Green**

PH-388B

Colour: Gold and Green  
Length: 4cm Width: 1.7cm  
Brass with Patina



**Maya Necklace, Green**

PH-389B

Colour: Gold and Green  
Chain Length : 60cm Extension: 5cm  
Pendant Length: 2cm Width: 1.7cm  
Brass with Patina





**Maya Earrings, Red**

PH-388A

Colour: Gold and Red

Length: 4cm Width: 1.7cm

Brass with Patina



**Maya Necklace, Red**

PH-389A

Colour: Gold and Red

Chain Length: 60cm Extension: 5cm

Pendant Length: 2cm Width: 1.7cm

Brass with Patina



**Kiara Earrings**

PH-370

Colour: Gold and Green  
Length: 3cm, Width: 1.7cm  
Brass with Patina



**Freida Earrings**

PH-371

Colour: Gold and Green  
Length: 3cm Width: 1.7cm  
Brass with Patina



**Hema Oval Earrings, Blue**

PH-377B

Colour: Silver and Blue

Length: 4.2cm Width: 1.8cm

Brass with Patina



**Hema Oval Earrings, Green**

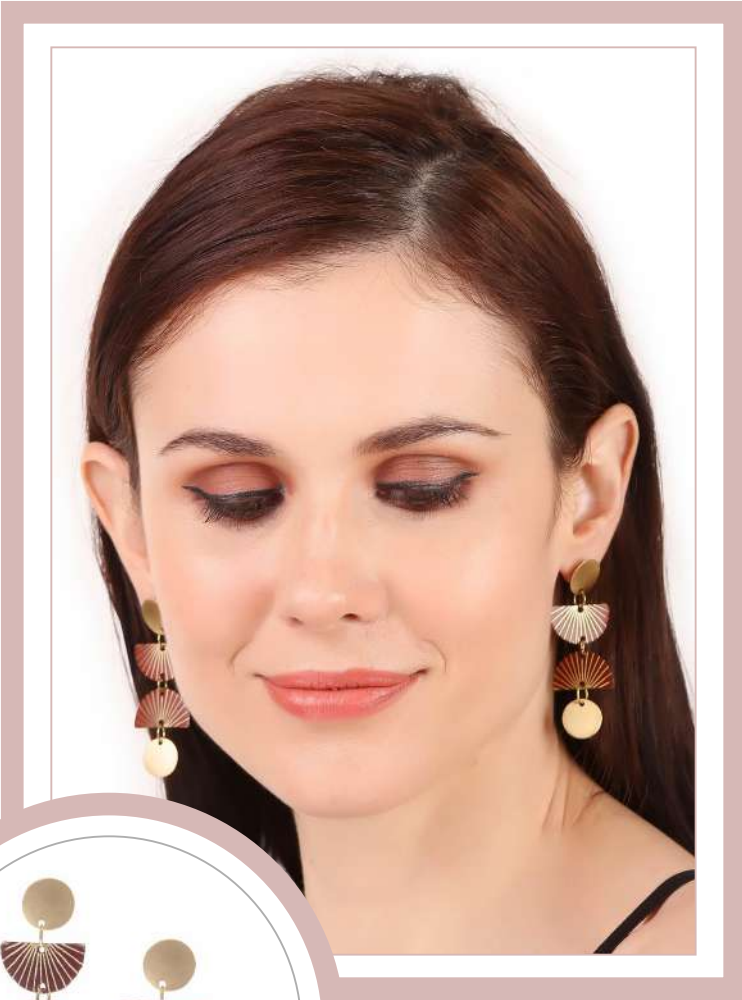
PH-377A

Colour: Gold and Green

Length: 4.2cm Width: 1.8cm

Brass with Patina





**Aditi Sunrise Earrings, Red**

PH-392A

Colour: Gold and Red

Length: 5.8cm Width: 2.4cm

Brass with Patina



**Aditi Sunrise Earrings, Green**

PH-392B

Colour: Gold and Green

Length: 5.8cm Width: 2.4cm

Brass with Patina



**Ovi Earrings, Red**

PH-378A

Colour: Gold and Red  
Length: 3.5cm Width: 2.8cm  
Brass with Patina



**Ovi Earrings, Blue**

PH-378B

Colour: Gold and Blue  
Length: 3.5cm Width: 2.8cm  
Brass with Patina



**Anika Earrings**

PH-379

Colour: Gold and Green  
Length: 4.2cm Width: 2.8cm  
Brass with Patina



**Lalita Earrings**

PH-387

Colour: Gold and Blue  
Length: 5cm Width: 3.2cm  
Brass with Patina





**Ira Earrings, Gold**  
PH-390A  
Colour: Gold and Blue  
Length: 3.6cm Width: 1.5cm  
Brass with Patina



**Ira Earrings, Silver**  
PH-390B  
Colour: Silver and Blue  
Length: 3.6cm Width: 1.5cm  
Brass with Patina



**Jia Earrings**

PH-393

Colour: Gold and Green

Length: 5cm Width: 2cm

Brass with Patina



**Gaya Earrings**

PH-391

Colour: Gold and Blue

Length: 4.5cm Width: 1.6cm

Brass with Patina



**Eka Earrings**

PH-395

Colour: Silver

Length: 3.5cm Width: 1.3cm

Brass with Patina



**Neera Earrings**

PH-396

Colour: Gold

Length: 6cm Width: 2.8cm

Brass with Patina



Daughters of the Ganges has collaborated with CSA, a non-profit organisation that works for the empowerment of women in North India. Currently, CSA is working with and running workshops for a group of 70 women. Their goal is to expand their outreach to bring more women into their tight-knit family. As a volunteer-run initiative, all the profits made by our partner are re-invested to benefit the communities they work with.

We believe that the ethos and motivation that drive our brand are similar to those of CSA. Working together towards the same goal, we have come up with a small selection of beautiful hand printed and stitched pouches. Going forward, we would like to add to this collection, enabling us to ensure sustainable employment and livelihoods for women from low-income households.



### Sundari Make-Up Bag

CSA-329A

Colour: Green and Blue

Diameter: 38cm

Fabric: Cotton



### Sundari Make-Up Bag

CSA-329B

Colour: Pink and Yellow

Diameter: 38cm

Fabric: Cotton





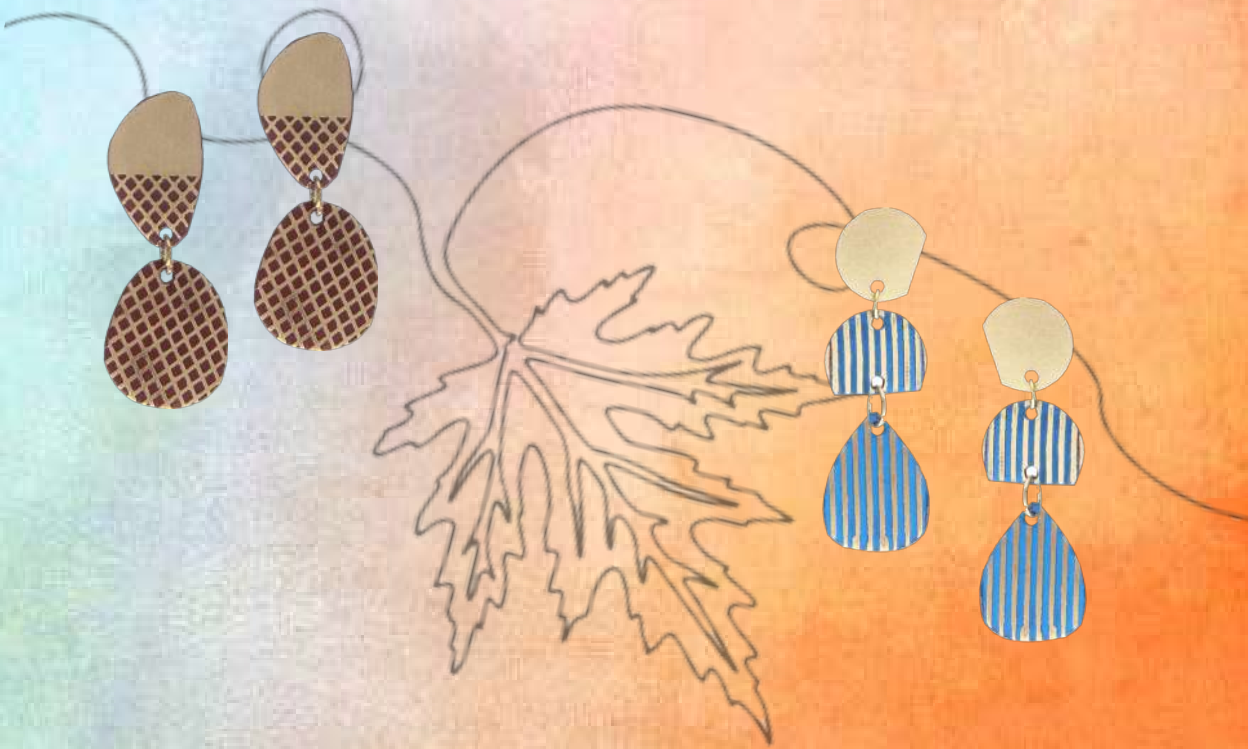
HANDMADE



WITH LOVE







pri@whycfm.org  
www.daughtersoftheganges.com  
@daughtersoftheganges

