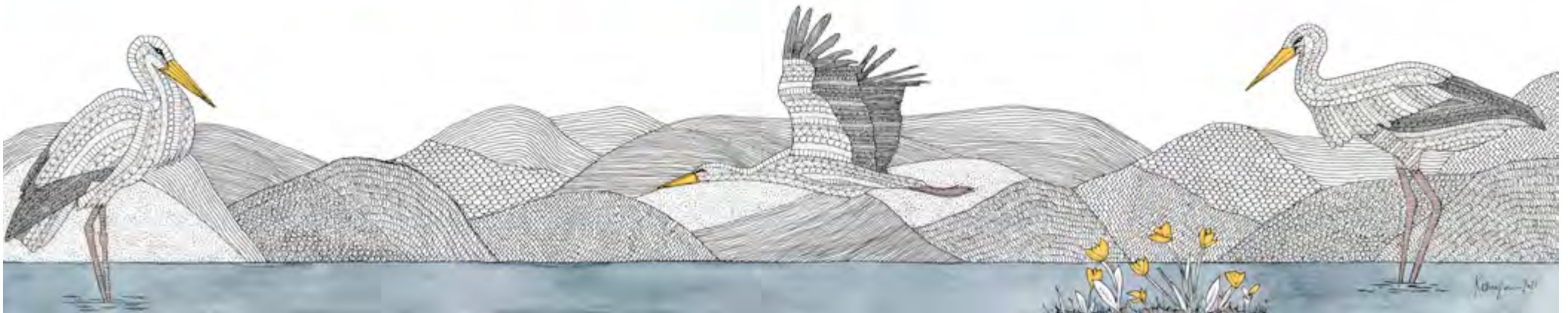


WILDLIFE, NATURE & LANDSCAPE ILLUSTRATION

Commissions & Licensing



KATHERINE JONES ARTIST

www.katherinemgjoness.com

@katherinejonesartist



Hello, I'm Katherine.

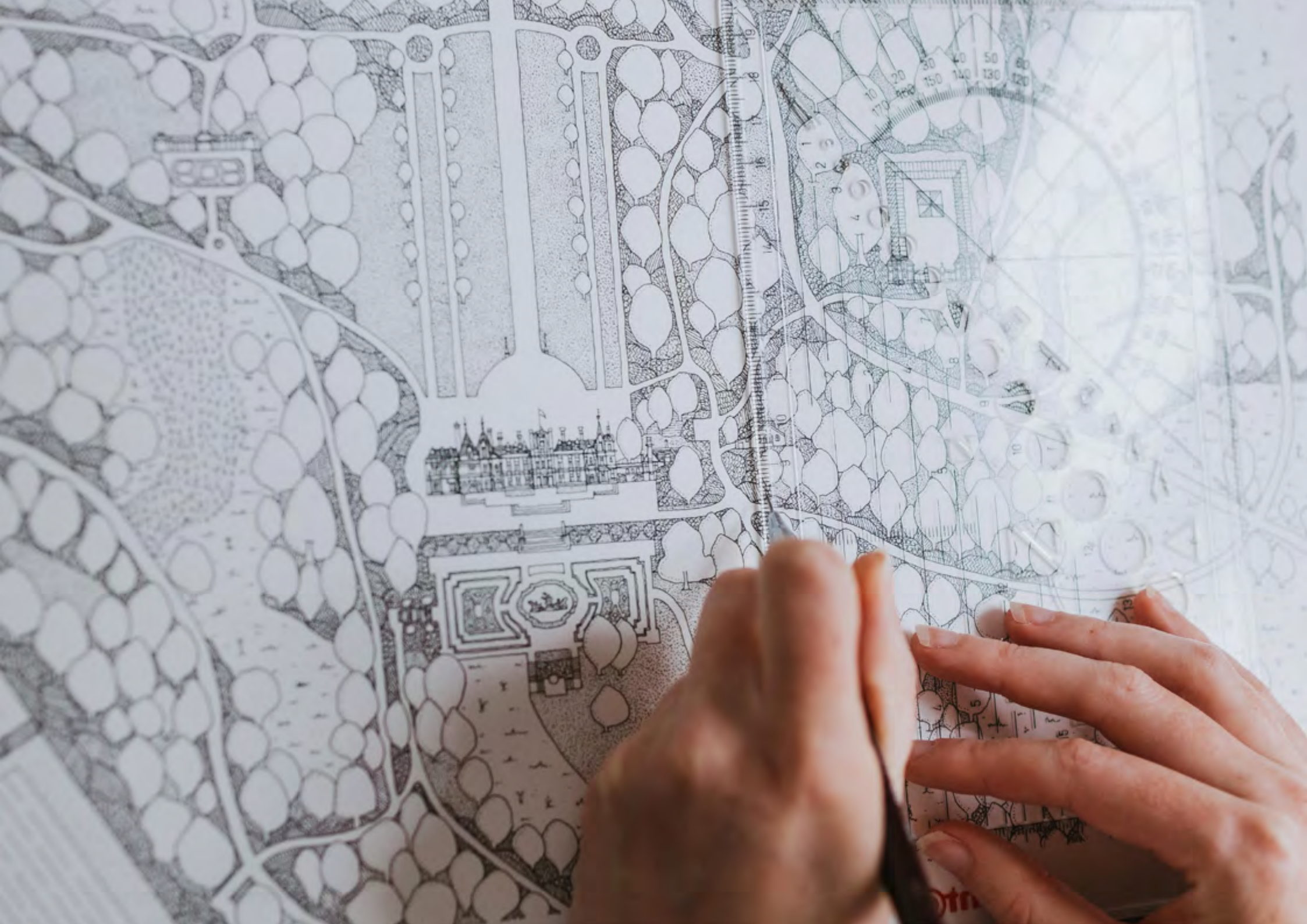
I'm an award-winning architect and artist based in Cardiff. Drawing on 13 years of architecture experience & a lifetime of passion for wildlife, my detailed pen and ink commissions are made up of intricate line work that create an unusual and rich tapestry of patterns. These original drawings make a special, one-off piece of art, but I can also use them to create affordable digital prints and cards for your gift shop or clients.

I take commissions for drawings of landscapes, wildlife and buildings. Each of my pieces consider the wider picture, but I also love the smaller detail. From re-wilded estates, to nature charities, and bringing wildlife into a hospital, I explore the natural world through layers of lines and textures, to create stylish, meaningful artwork.

My work has featured on BBC Radio 4 and I've created commissions for organisations including Waddesdon Manor, the Wildfowl & Wetlands Trust Slimbridge and the National Trust. My work is also stocked with the RSPB. I proudly partner with three wildlife conservation charities to give something back. You can view some examples in this document.

I hope you love them as much as I love creating them. It would be amazing to work with you.

Katherine.





14x11" mounted print of the landscape map drawing



Range of cards featuring the map drawing as well as the manor drawing

Overleaf: detail of the manor and Parterre

Waddesdon Manor: Landscape Map of the Grounds, 2023

In 2023, Waddesdon Manor (a Rothschild House & Garden, and National Trust property) commissioned three drawings from me, including this landscape map. It was turned into a four piece collection; prints at two different sizes and two cards, to sell in their gift shop. This range will be expanded to products too, which are in development.

To begin, I visited this amazing site to discuss what drawings the retail team had in mind. I was guided around the landscape, so I could orientate myself, take photos and plan what I needed to start drawing.

The landscape map of the grounds is extremely detailed and brings together the different elements of the estate beautifully. This project featured a tiny 12mm tall manor house alongside other key elements including the Parterre, the North Fountain and the Stables. Whilst being visually stunning and very intricate, it is also highly accurate. The pops of colour add depth and tone to the drawing.

"The drawings are stunning and encapsulated the architecture of the Manor beautifully. It has been a real pleasure working with Katherine on these projects and I am delighted with the finished artwork and the beautiful products we have collaborated on."

- Nicola Mertens, Retail Manager, Waddesdon Manor



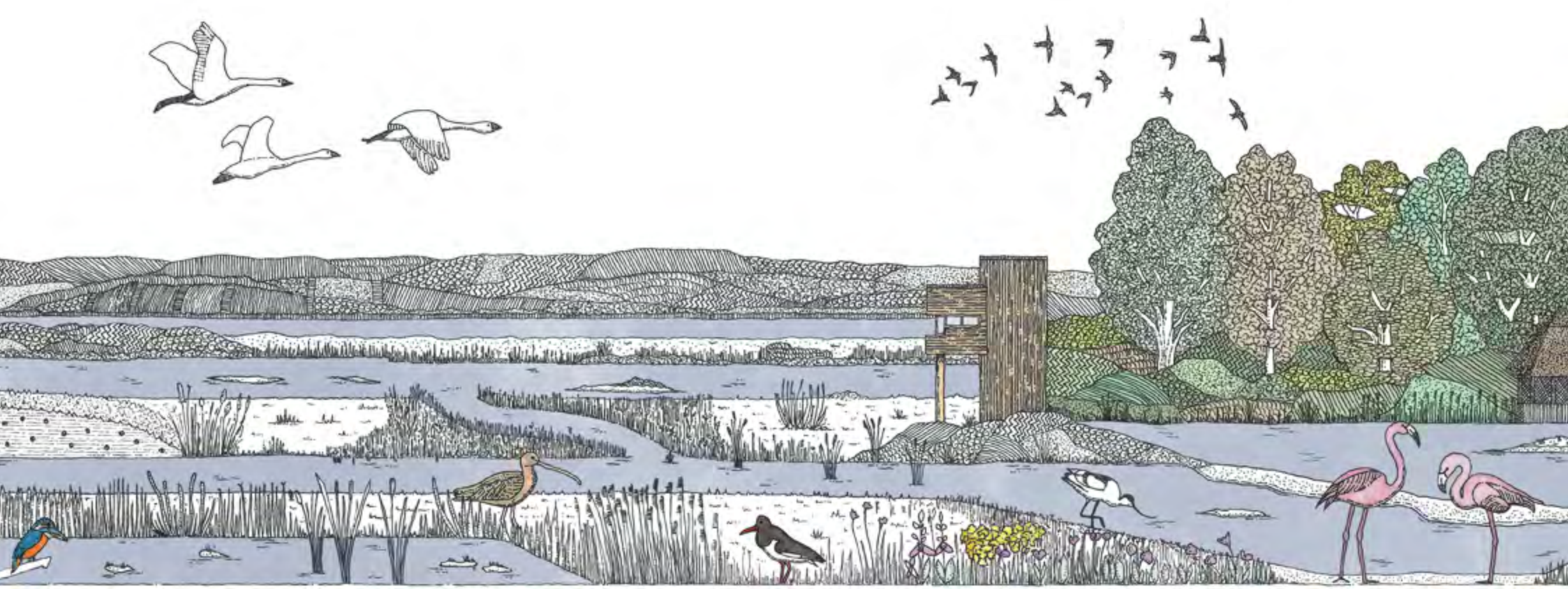
Commission for Slimbridge, Wildfowl & Wetlands Trust, 2023

The WWT commissioned me to draw their most popular nature reserve; Slimbridge, and asked me to capture 'the essence' of their site. Before starting the drawings, I worked closely with the retail team to agree the scope of work. This included a guided tour so I could understand the most important elements of the centre and the wildlife that is special to each part of the site. The resulting drawing is one which captures the built elements of Slimbridge nestled within the surrounding landscape. The featured wildlife is an integral and important element.

This project combined my love of wildlife and nature with my architectural drawing style. The final drawing has been turned into a series of six cards, and a collection of five prints at different sizes.

"Working with Katherine has been an absolute pleasure. She has skilfully captured our historic Slimbridge Wetlands & Nature Reserve site in her detailed drawings and it goes above and beyond my expectations from the brief we gave. Every stage of the work was agreed & delivered on time and the products produced are already being snapped up by our customers. I cannot recommend her work more."

- Brian Iles – Head of Commercial WWT





Above: Examples of 8x6" mounted prints from the range;



Above: Range of cards produced. Below: Whole drawing commission





Above & below: Landscape drawing in the birthing room



Overleaf: Stork art in corridor with magnets featuring the names and dates of babies born

Large Scale Artworks for Grange University Hospital, 2021

In 2021, I was asked by Studio Response to create two bespoke drawings for the walls of the maternity ward at the Grange Hospital in Cwmbran. The original drawings were A2 length standalone artworks which were scanned, enlarged and turned into six-metre long prints. They were printed onto wipe-able vinyl with some areas being magnetised to allow interaction between the public, staff and my artwork. The original drawings are displayed in the waiting room.

I loved seeing the drawings coming together and going up on the ward corridors. It was also a lovely way for me to link my wildlife drawings to the surrounding landscape and place them among local architecture.

“We saw in Katherine’s drawings a warmth, texture and intricacy that we felt would translate well to the context of this commission. Katherine fully grasped the brief and the complexities of working at the scale required for large clinical and public areas. She ensured that her work was site specific by referencing local landscapes and the subtle pops of colour that draw the eye but don’t overwhelm the artwork’s serenity.

The artworks have been very warmly received and we would be more than happy to work with Katherine again.”

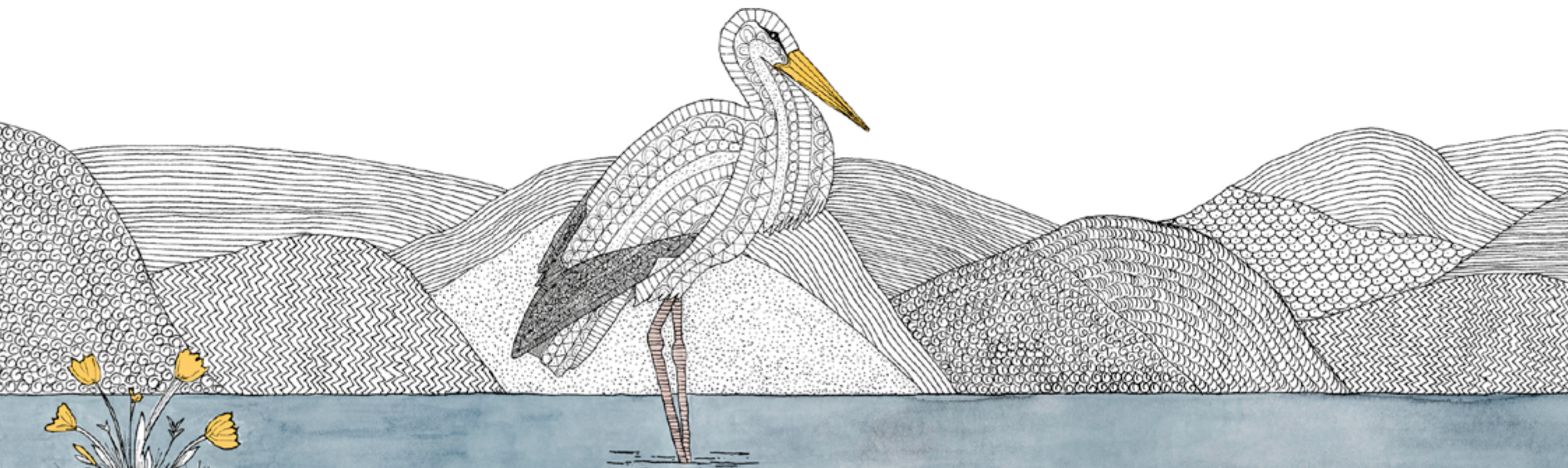
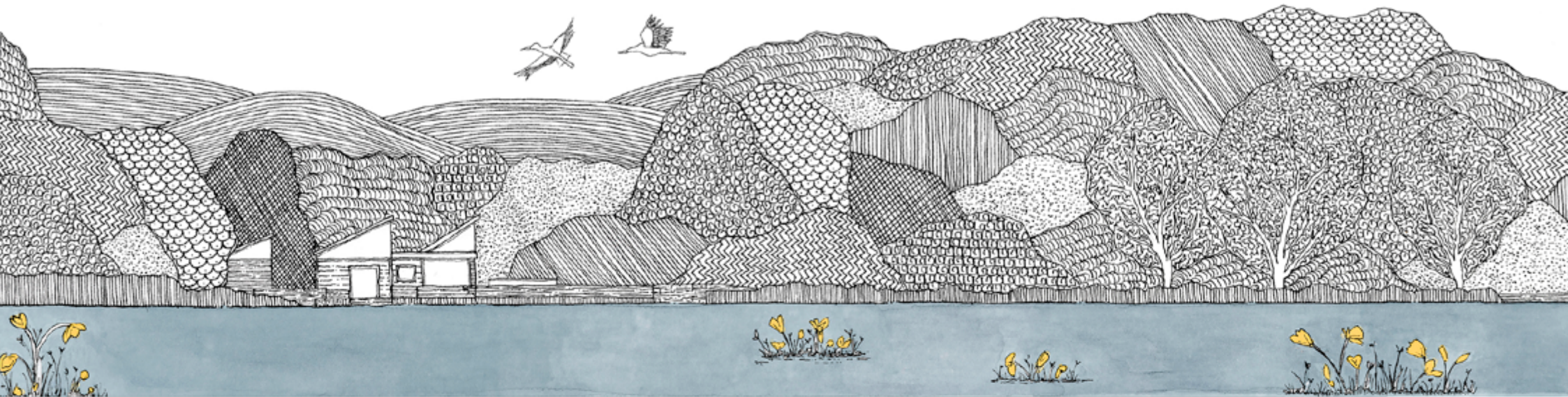
- Studio Response

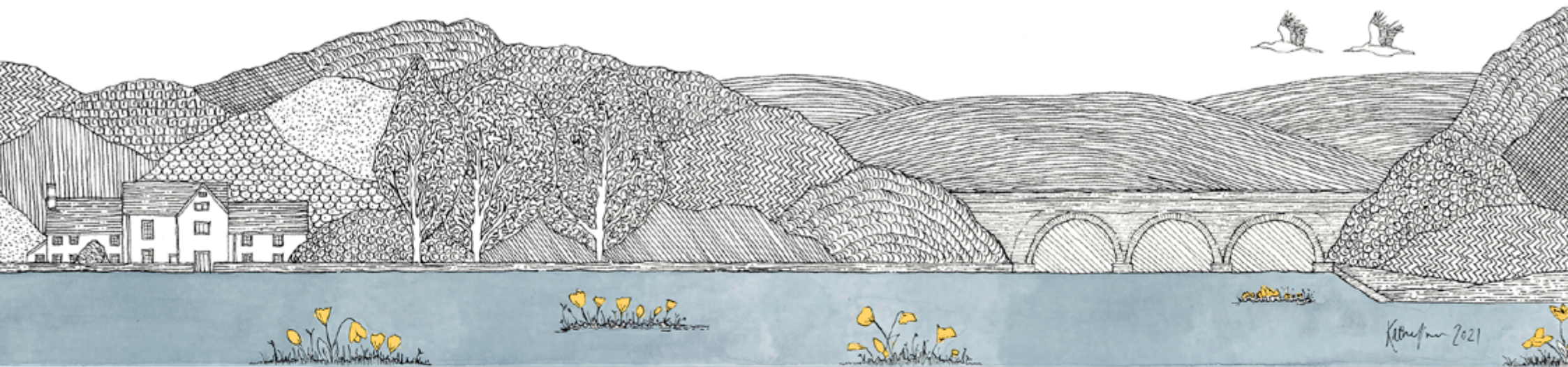


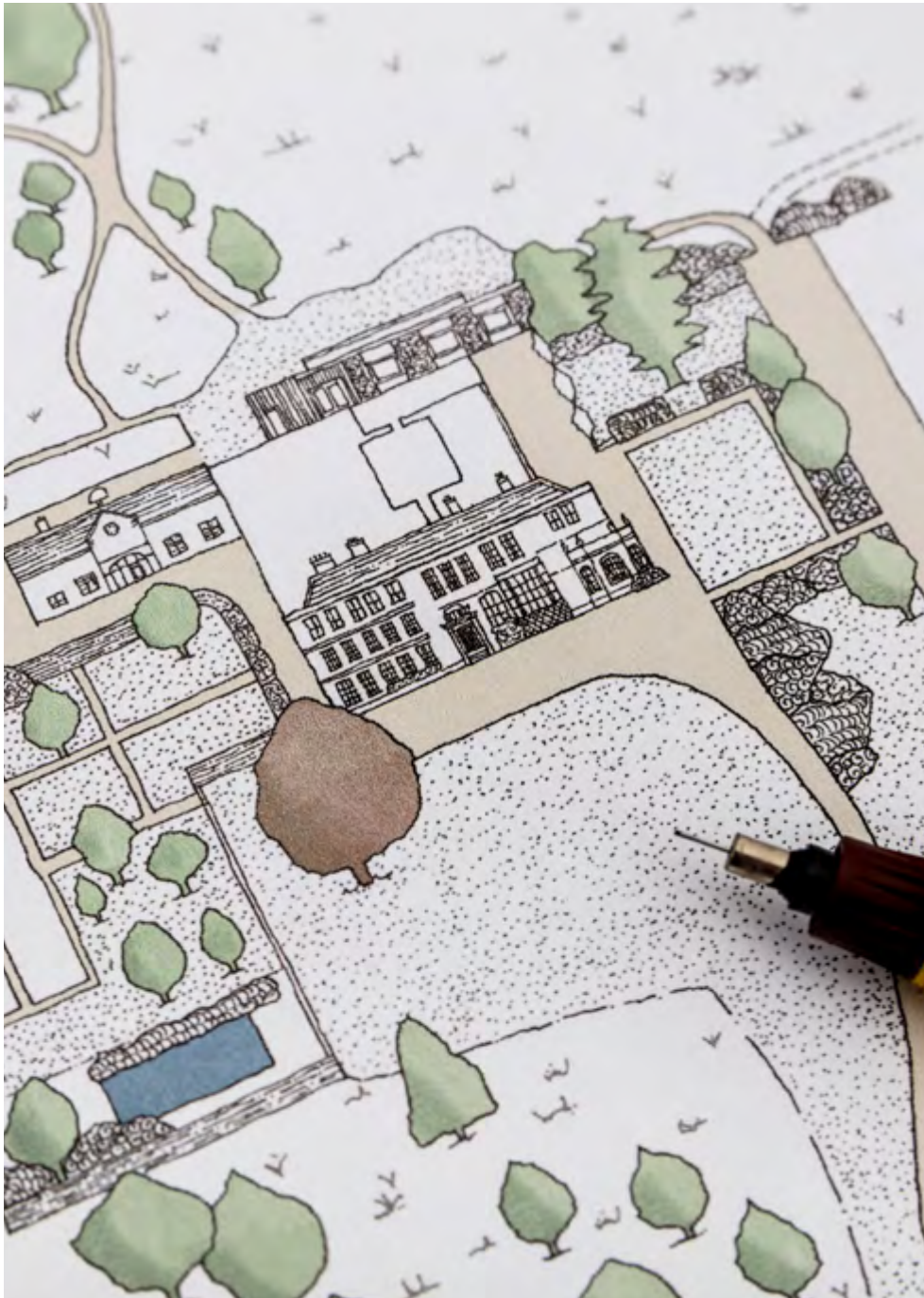
Admission Desk Pharmacy
Physical Therapy



Kathryn 2021







Detail of Elmore Court map, showing the main house & gardens

Elmore Court: Map for Rewilding

In 2021, Elmore Court commissioned me to create two beautiful maps of their newly rewilded landscape. An initial print run of 100 leaflets were given to guests who explore the estate whilst walking or wild swimming. In 2023, more of these maps will be given to guests to orientate themselves when their new treehouse accommodation opens.

“Working with Katherine was a pleasure. She is passionate about her work and was patient, ensuring that she understood our desired outcomes. We were delighted by the drawings and how they translated the landscape onto paper.”

- Anselm & Sarah Guise



Leaflets with both maps are given to visitors who are exploring the estate

Charity Partnerships

I'm proud to give back through my work. Wildlife and nature is a huge part of my life, something I have been passionate about since I was young. As well as volunteering for a local wildlife rescue charity, and co-founding a Welsh rewilding charity, I partner with three charities that mean a lot to me, two of which are discussed in more detail on the next page. I am an official partner with the Whale & Dolphin Conservation, Rewilding Britain and Hedgehog Helpline Cymru. I also do commission work for nature conservation charities at a reduced rate. Please get in touch if you'd like to discuss this in more detail.



Eurasian Lynx mounted print. 20% of wholesale orders are donated to Rewilding Britain



Hedgehog mounted print. 20% of wholesale orders are donated to Hedgehog Helpline Cymru



Whales & dolphins : range of 5 cards

Whale & Dolphin Conservation

I am an official partner with the Whale & Dolphin Conservation (WDC) with my 10-piece collection of whale & dolphin drawings. The WDC do amazing work globally to protect these beautiful animals. I have adopted a dolphin from the WDC for over 20 years, and have been obsessed with whales and dolphins ever since! I developed this range of artwork to raise money for a charity that is close to my heart and raise awareness for the wonderful work that they do.

20% of profits from wholesale orders are donated to the WDC.



European Tree Frog: detail

Overleaf: Whales & dolphins mounted print 20x12"

Rewilding Britain

This range features five intricately detailed drawings of extremely important species in rewilding, or animals that used to be present in the UK, but are now extinct. These include the Turtle Dove, Eurasian Beaver, Eurasian Lynx, European Tree Frog and Dalmatian Pelican.

I proudly collaborate with Rewilding Britain who work in the UK to restore habitat for wildlife, encourage people to connect with nature and bring new opportunities to local communities.

20% of profits from wholesale orders are donated to Rewilding Britain.



Korayhan 2020



White Storks against a setting sun - detail



Barn owl against a full moon - detail

Our Beautiful Planet

Now more than ever, we need to restore our beautiful planet. The drawing on the right was created for Earth Day 2021. For every print sold through my website, I donate the full amount to my wildlife conservation partners (split equally).

The images on this page offer something a little different, which aim to capture the raw beauty of the world through art. The composition, colouring and mixed media approach offer a more experimental side to my artwork, and something I'd love to work more on.



Collection of all three drawings

Overleaf: Our Planet - detail





Barn Owl & Grey Grey Owl Cards

Prints & Cards for Wholesale

My original drawings can be turned into high quality digital prints and cards that are an accessible price for your customers. I manage the whole process, from creating the drawings to shipping the prints, so you can get exactly what you need quickly and easily. The drawings can come in different sizes and I am happy to prepare samples to send to you.

"We are proud to showcase Katherine's stunning collection in our gift shop."

- Retail Team, Dyffryn Gardens, National Trust



Peacock Butterfly: detail



Garden Bird cards (as stocked by the RSPB and National Trust)



Puffin : detail (as stocked by the National Trust)



All packaging is plastic-free, biodegradable and compostable



Range of British Insects : mounted prints (as stocked by the National Trust)



Would you like to work together?

I work with a wide range of organisations to design and create unique collections of prints and artworks. My pen and ink commissions are made up of intricate line work that creates a unique and accurate drawing, combining accurate details with a rich tapestry of patterns.

I work to commission and can turn the original drawings into high quality digital prints and cards that are an accessible price for your customers. I also work on a licensing basis for products.

Please do get in touch to discuss your requirements - I'd love to have a conversation to see how we could work together.

With best wishes, *Katherine*



@katherinejonesartist



@katjonesartist

www.katherinemgjones.com

katherinemgjones@gmail.com

Visit me in 2024....

Top Drawer, London Olympia, 14th - 16th January, craft stand: **CRJ02**

Association for Cultural Enterprises Conference & Trade Show,

ICC Wales, Newport, 13th - 14th March, **stand 96**