

BOHO BETTY

Spring/Summer 2024

LOOKBOOK

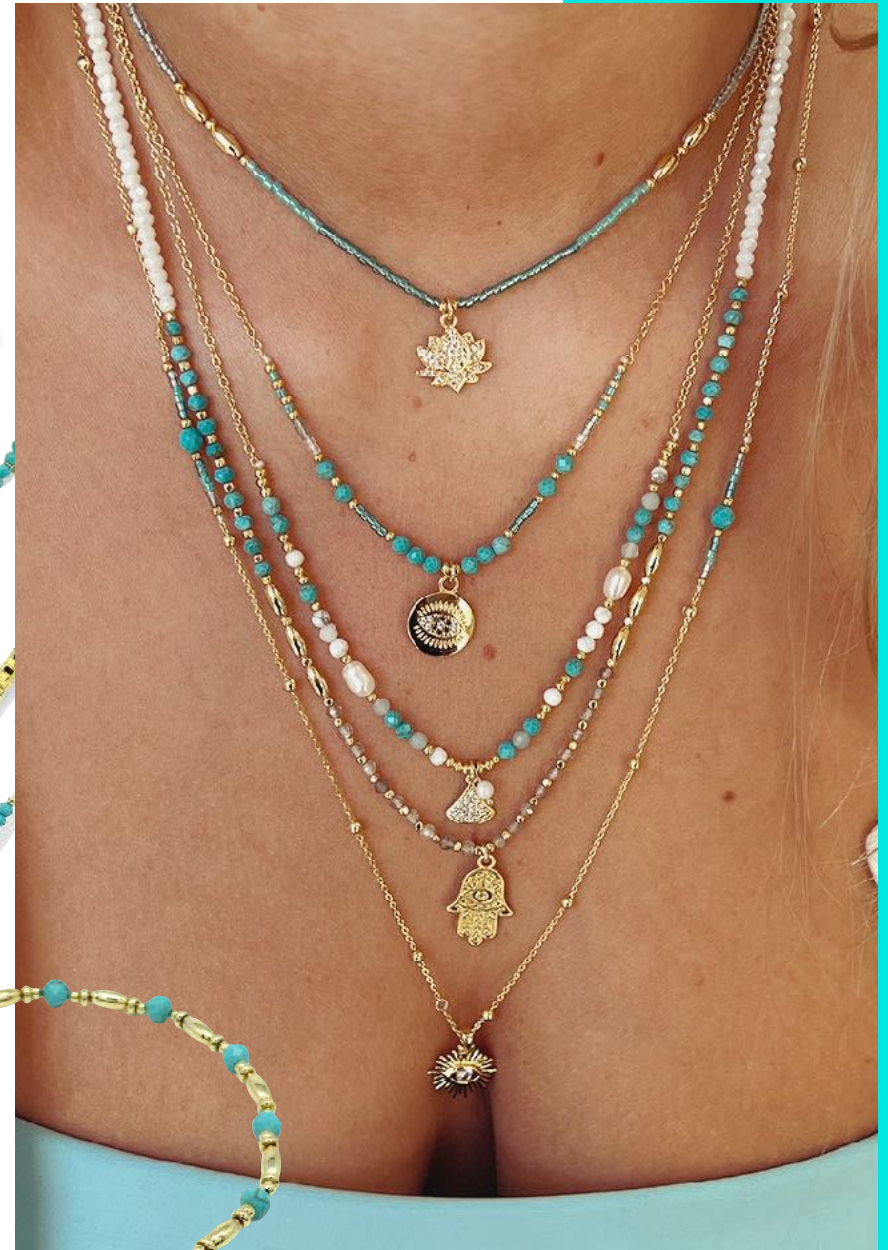


BOHO BETTY

*Your
Sunshine
Staples*

TURQUOISE ENERGY

Your summer go-tos for happy vibes





ee

I would highly recommend Boho Betty! Very good prices and beautiful colourful jewellery, easy to wear in every day life.

SPRING PINKS

Pretty soft pinks for a splash of subtle colour





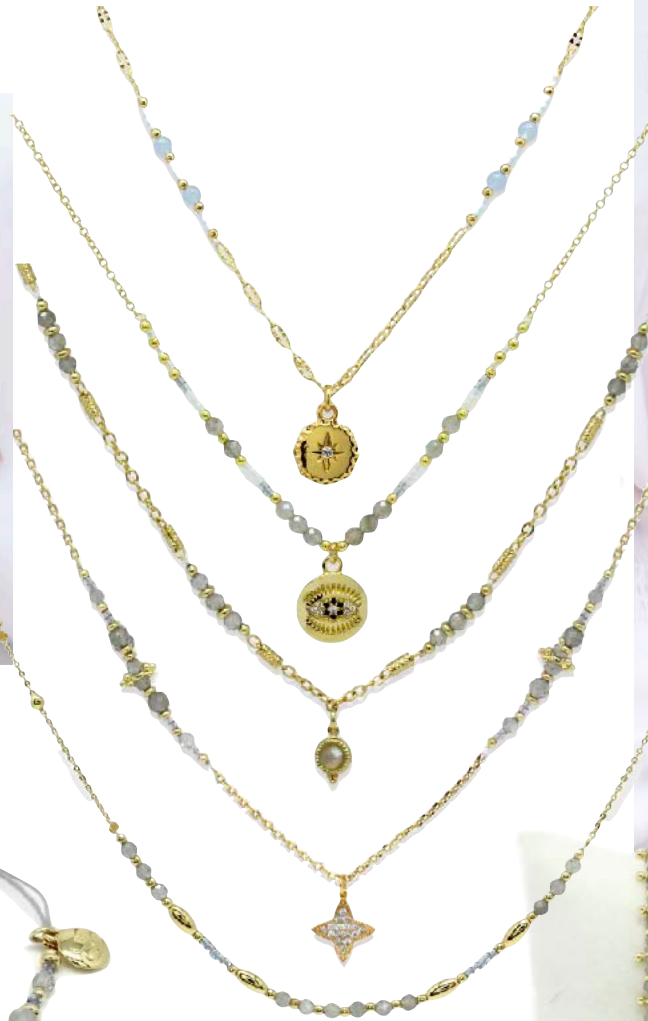
SPRING SILVERS

Sparkle in silvery softness



LABRADORITE LOVE

Neutral styles for all year round style



TRANQUIL SHORES

Aqua & pale green gemstone collection



TOURMALINE MIX

Relish the gemstone rainbow of soft pinks to pale greens



RAW CUTS

Multi-coloured gemstones for a bold look





ee

The quality of the jewellery is very nice. The prices are affordable. And the customer service is pretty good.

VIBRANT SUMMER

Hot pinks and turquoise for holiday vibes







*Feel good
Jewellery*

BE PEACHY

Elevate your style with the gentle femininity of soft pinks





Feel Good
GEMSTONES

WELLNESS BRACELETS

Radiate positivity with our gemstone bracelets



EVIL EYE

Stay protected from negativity with our evil eye jewellery



WELLNESS BRACELETS

Radiate positivity with our gemstone bracelets



*Pink
Tourmaline
Gemstone*



*Amazonite
Gemstone*



*Apatite
Gemstone*



*Sunstone
Gemstone*



MULTI WELLNESS

Feel glowing with our stunning multi gemstone styles



GEMSTONE NECKLACES

Feel amazing with our gemstone necklaces



25

*Amazing
Gemstone
Colours*



MULTICOLOUR RADIANCE

Brighten your style with multi-coloured jewellery



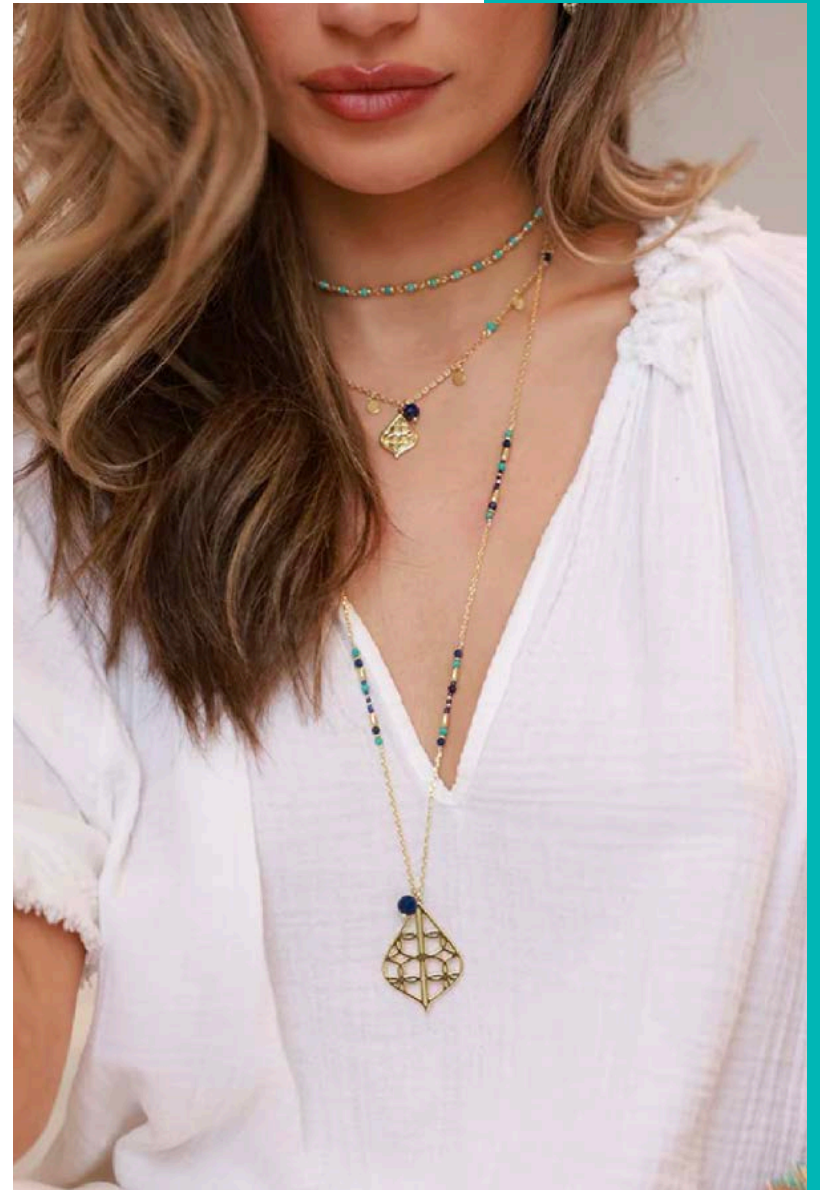
WRAP BRACELETS

Our original bestselling wrap around bracelets



SIGNATURE COLLECTION

Be iconic with our cute BB filigree signature pattern





All about
Wellness"

OCEANIA

Enjoy the all-year-round classic tones of turquoise and navy



DESIGN YOUR OWN NECKLACE

Make it your own with charm accessories



*Add a chakra, zodiac
& gemstone charm*

CHAKRA COLLECTION

Revive with chakra wellness gemstone energy



CHAKRA BRACELETS

Chakra wellness gemstone energy bracelets





ee

Boho Betty goes above and beyond with customer service and always go the extra mile; this is why I shop with them

GEMSTONE EARRINGS

Match up with companion real gemstone earrings



MEANINGFUL MESSAGE BRACELETS

Say it with a Morse Code gemstone empowering message



Bestselling
GIFT IDEA

WOVEN COLOUR

Woven bracelets with colour impact

*Best
seller*



LAYERING COLOUR

Bracelets to add instant colour pop to your arm candy



COLOUR POP

Indulge in colourful gemstone & beaded jewellery





*Feel good
Jewellery*

BEADED STYLE

Colourful beaded bracelets to make you sparkle





ee

I've had a few orders from Boho Betty now. The designs are unique and items are always shipped quickly, packaged safely and securely and presented beautifully.

Perfect for yourself or for gifts.

ZODIAC COLLECTION

Star sign bracelets with colour gemstone love




ZODIAC
Gemstone Collection



Great
GIFTING
idea

CHAIN BRACELETS

Make a statement with layering chunky chains



CHAIN NECKLACES

Make a statement with layering chunky chains





ee

I would highly recommend Boho Betty! Very good prices and beautiful colourful jewellery, easy to wear in every day life.



Gifts worth giving



STACK IT UP

Layer up with our boxed ready-to-go bracelet sets





COLOUR POP EARRINGS

Brightening up your day



Lustrous Rhodium-plated sterling silver





ee

5* Amazing service, fast delivery!
Beautiful jewellery I brought a
couple of bracelets and I've had
so many compliments on them!

ABOUT BOHO BETTY

Boho Betty is a brand that gives back and is your go to destination for meaningful gifts that promote a sense of well-being.

We are passionate about giving back and have donated and continue to support some amazing charities through our kindness projects. We offer timeless and unique jewellery, that exudes style. Our jewels serve as perfect gifts for both you and cherished loved ones, echoing the significance of self-care and meaningful relationships.

Designed to be worn every day, our gorgeous jewellery will always make you smile without breaking the bank, whether you're treating yourself or searching for one-of-a-kind-treasured gift. Embark on a journey of self-expression with our heartfelt jewels from our exquisite gemstone collections.

Our jewellery is crafted for daily wear, providing empowerment for every occasion. Whether it's a night out, a workday or a leisurely day at the beach, our pieces are designed to instill self-confidence.

Effortlessly narrate your unique story through our exclusive bracelet stacks and layered necklaces. We've curated the perfect combinations, allowing you to discover your distinctive Boho Betty essence. Mix and match your preferred pieces to curate a personalized and uplifting style that resonates with joy.

Why delay? Embrace your inner Boho Betty today and immerse yourself in the joy and uplifting energy emanating from our jewellery collection!

*Affordable jewellery
designed to make you
smile*



POINT OF SALE



Discover our new wholesale packaging designed exclusively for your bracelets and necklaces!

Ideal for showcasing in your store...

Every display box comes complete with a luxurious velvet bag and, where relevant, informative cards tailored to your product, including details about chakras, gemstones, and more.

OUR RESPONSIBILITIES

INCLUSIVITY

At Boho Betty, we believe that every person, regardless of their size, skin colour, or background, deserve to feel confident and represented. We are dedicated to being an inclusive company, and we always take into account the voices of our customers. We recognise the importance of diversity and strive to continuously learn and improve in this area.

ENVIRONMENTAL & ETHICAL RESPONSIBILITY

As a company, we are committed to being environmentally responsible. While we may not be perfect, we are constantly working towards becoming more sustainable and reducing our impact on the environment.

For years, we have built strong relationships with skilled artisans and trustworthy suppliers from various locations globally. Our foremost priority is ensuring fair and ethical treatment for all individuals involved in the production and procurement of our jewellery, including their families and communities. We make sure they are not subjected to exploitation and are given a safe work environment, a reasonable salary, and reasonable working hours. We are dedicated to maintaining a transparent supply chain and regularly visit our suppliers to monitor their conditions.



Rebecca Middleton, Founder

*Betty
+*



*"Be brave, Belong,
Be you & Smile"*