

esmie

---

ESMIE TRADE CATALOGUE 2024

## ABOUT US

*Esmie is a UK based design studio, creating hand-crafted elegant stationery & luxury home accessories by combining Japanese aesthetics with time-honoured artisanal techniques.*

Founded in 2009 by Kim Harrup-Brook, following a life long appreciation and practice of traditional bookbinding and hand print-making, culminating in the creation of ESMIE – Elegant Stationery Made In England.

Esmie designs & produces a range of stationery including beautifully hand-bound notebooks, journals, photograph albums as well as luxury collection of home accessories including a stunning range of lampshades.

We work closely alongside family-run silk-screen print studios in Kyoto, Japan to produce our designs. We select from an extraordinary archive of intricate patterns that are inspired by Kimono textiles, these are produced in our chosen colorways. We style these with materials ethically sourced from Japan & Europe to produce our collections.

We use a selection of expert artisans to produce our products, paper mills in the Lake District & Italy, fabric mills in Japan & Holland, including experienced bookbinders in the New Forest, and skilled lampshade makers in East Sussex.

We are committed to taking responsibility for our environmental impact in the making of our products. This includes ensuring that our papers we source are made using wood pulp from responsibly managed forestry, certified to FSC® and PEFC® standards. We are minimising plastic usage, as well as incorporating biodegradable packaging.

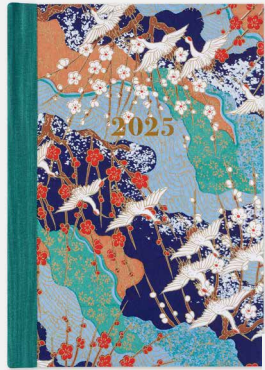
We hope our obsession with hand-crafted techniques and their inherent tactile qualities are translated and enjoyed through our products – whether through the joy of collating your thoughts in a journal, organising your treasured memories in a photograph album, or gazing up into the wonders of the Sougara landscapes inside our fabric lampshades.

For further information contact: [info@esmie.co.uk](mailto:info@esmie.co.uk)

PRODUCT INDEX



1.



3.



4.



7.



8.



2.



5.



9.



10.

1. GREETING CARDS

2. NOTEBOOKS

3. DIARIES

4. ADDRESS BOOKS

5. TEA TINS

6. ALBUMS

7. KEEPSAKE TINS

8. PENCILS

9. LAMPSHADES

10. HAND PRINTED PAPERS

11. GUEST BOOKS

12. PEN POTS

NEW IN



11.



6.



12.

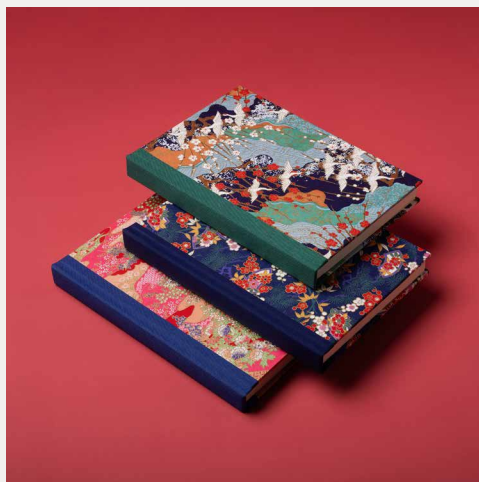
NEW DESIGNS



ES 138. CRANES COLLAGE / BLUE

ES 139. RED BLOSSOM / COBALT BLUE

ES 140. RED / MINT FLORAL



ES 141. BLOSSOM BRANCHES / LILAC YELLOW

ES 142. ROLLING HILLS / PURPLE / PEACH

ES 143. WHITE BLUE BLOSSOM / PEACH

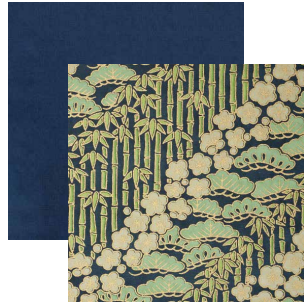


# STATIONERY DESIGNS

SILK SCREEN STATIONERY DESIGNS



CODE: ES 086  
*Flying Cranes / Black*



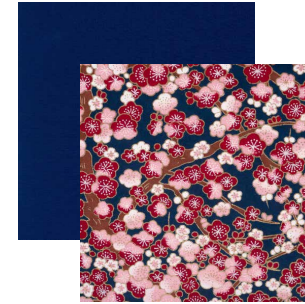
CODE: ES 099  
*Mint Bamboo / Blossom*



CODE: ES 130  
*Tropical Foliage / Blue*



CODE: ES 139  
*Red Blossom / Cobalt Blue*



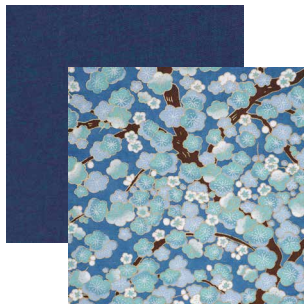
CODE: ES 131  
*Pink Blossom / Dark Blue*



CODE: ES 115  
*Bouquet Spray / Dark Blue*



CODE: ES 135  
*Blossom Trees / Pink*



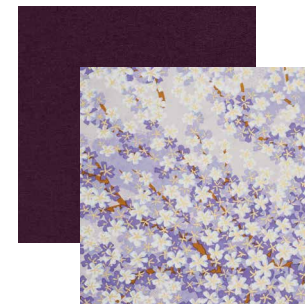
CODE: ES 116  
*Ice Blossom / Blue*



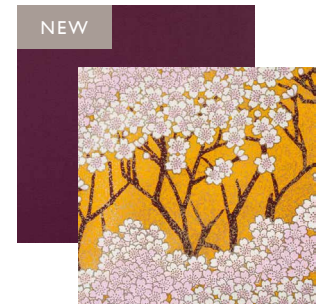
CODE: ES 134  
*Rolling Hills / Blue / Peach*



CODE: ES 140  
*Red / Mint Floral*

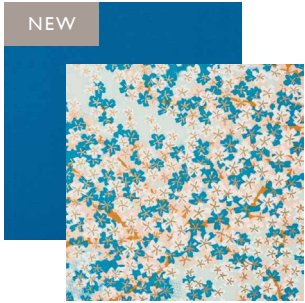


CODE: ES 040  
*White Purple Blossom / Lilac*



CODE: ES 141  
*Blossom Branches / Lilac Yellow*

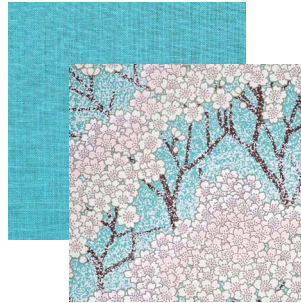
SILK SCREEN STATIONERY DESIGNS



**CODE: ES 143**  
*White Blue Blossom / Peach*



**CODE: ES 031**  
*White Cranes / Blue*



**CODE: ES 117**  
*Blossom Branches*



**CODE: ES 126**  
*Orange Daisies / Peach*



**CODE: ES 100**  
*Water Iris / Pink*



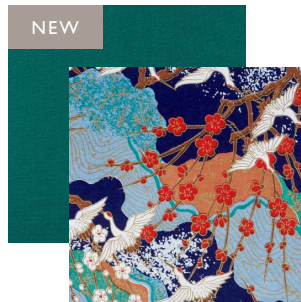
**CODE: ES 128**  
*Bouquet Spray / Pink*



**CODE: ES 118**  
*Turquoise Floral*



**CODE: ES 094**  
*Silver Cranes / Green*



**CODE: ES 138**  
*Collage Cranes / Blue*



**CODE: ES 111**  
*Pink Hydrangea / Mint*



**CODE: ES 006**  
*Pink Blossom / Green*



**CODE: ES 047**  
*Pink / Red Daisies / Blue*

SILK SCREEN STATIONERY DESIGNS



CODE: ES 001  
*Bouquet Spray / Blue*



CODE: ES 016  
*Yellow Buds / Blue*



CODE: ES 005  
*Orange Daisies / Blue*



CODE: ES 129  
*Bouquet Spray / Cornflower*



CODE: ES 132  
*Mint / Yellow Petals / Pink*



CODE: ES 133  
*Blossom Branches / Peach*



CODE: ES 108  
*White Cranes / Pink*



CODE: ES 092  
*Red Blossom / Cranes*



CODE: ES 015  
*White Red Blossom / Pink*



CODE: ES 110  
*Pattern Cranes Collage / Red*



CODE: ES 107  
*Orange Blossom / Teal*

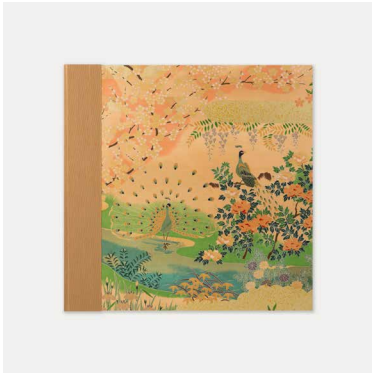


CODE: ES 142  
*Rolling Hills / Purple / Peach*





SOUGARA PHOTOGRAPH ALBUMS



CODE: XLA SOU 080  
*Gold Peacock*



CODE: XLA SOU 098  
*Rose Gold Peacock*



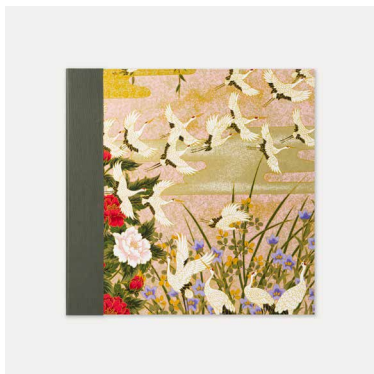
CODE: XLA SOU 082  
*Mint Green Peacock*



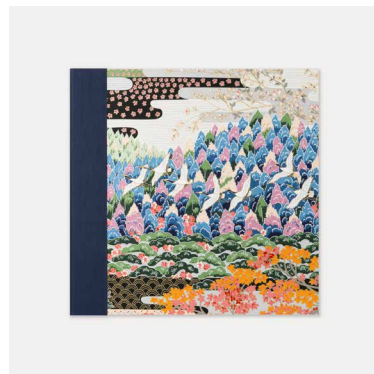
CODE: XLA SOU 085  
*Pink / Blue Peacock*



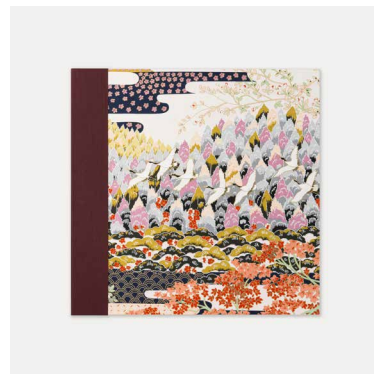
SOUGARA PHOTOGRAPH ALBUMS



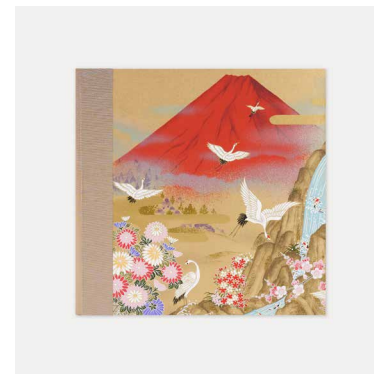
CODE: XLA SOU 081  
*Flying Cranes / Pink*



CODE: XLA SOU 084  
*Alpine Cranes / Blue*



CODE: XLA SOU 083  
*Alpine Cranes / Orange*

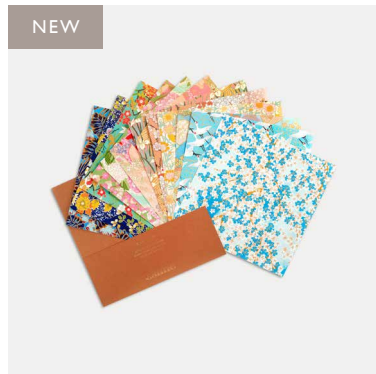


CODE: XLA SOU 113  
*Mount Fuji*

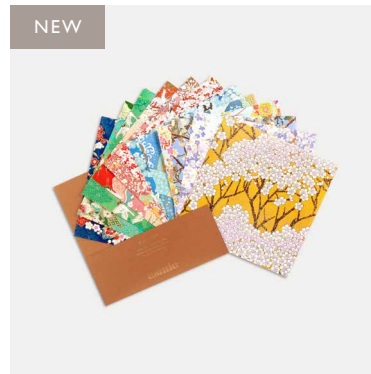




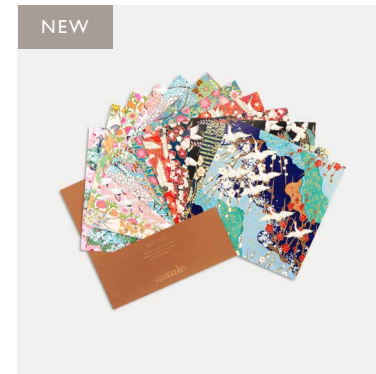
## PAPER PACKS



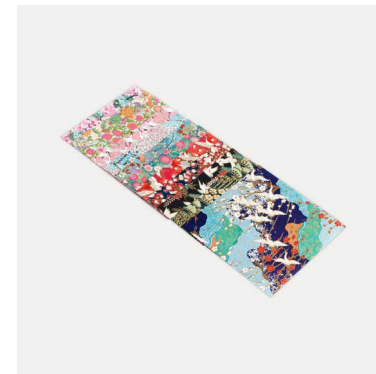
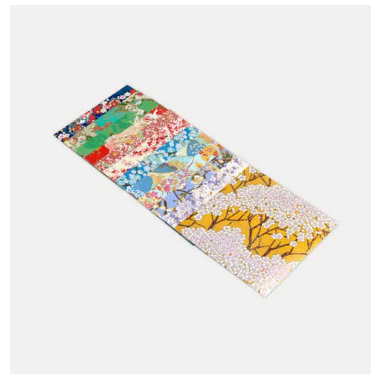
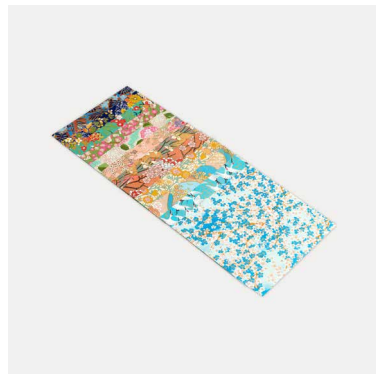
**CODE: APP/SS 001**  
*Assortment One*



**CODE: APP/SS 002**  
*Assortment Two*



**CODE: APP/SS 003**  
*Assortment Three*

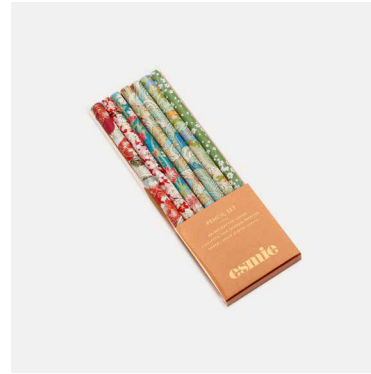




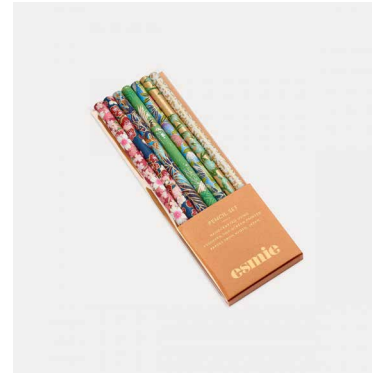
## PENCIL SETS



**CODE: PS 001**  
*Assortment One*



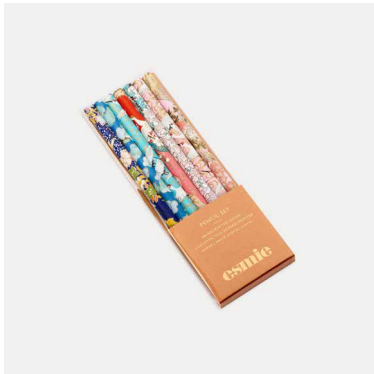
**CODE: PS 002**  
*Assortment Two*



**CODE: PS 003**  
*Assortment Three*



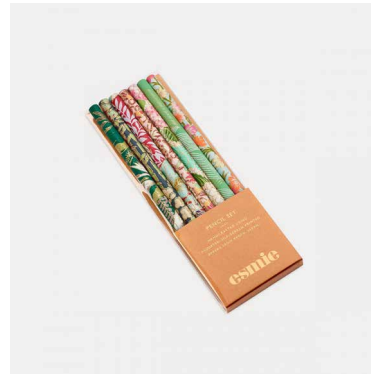
**CODE: PS 004**  
*Assortment Four*



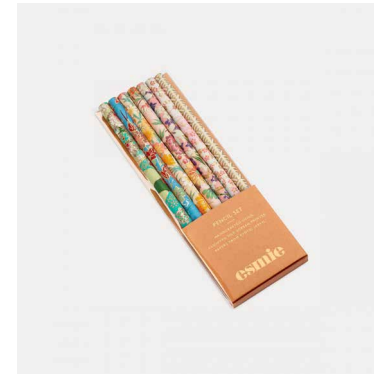
**CODE: PS 005**  
*Assortment Five*



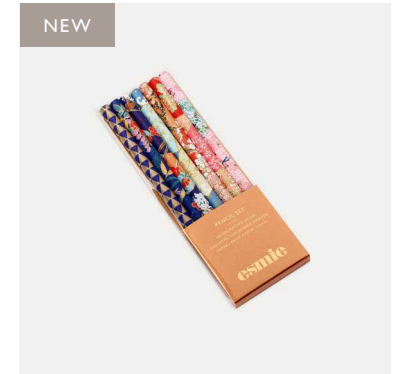
**CODE: PS 006**  
*Assortment Six*



**CODE: PS 007**  
*Assortment Seven*



**CODE: PS 008**  
*Assortment Eight*



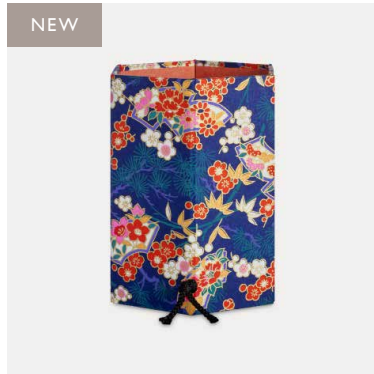
**CODE: PS 009**  
*Assortment Nine*

# PEN POTS



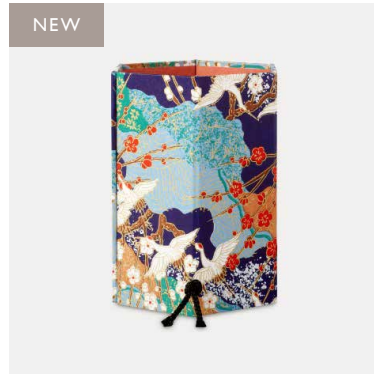
PEN POTS

NEW



CODE: PP ES 139  
*Red Blossom / Cobalt Blue*

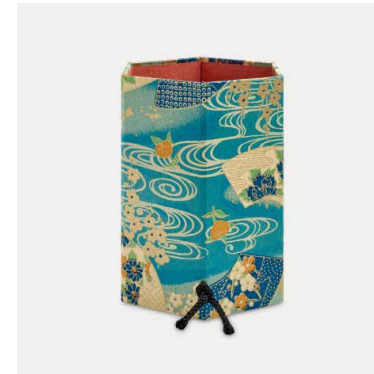
NEW



CODE: PP ES 138  
*Collage Cranes / Blue*



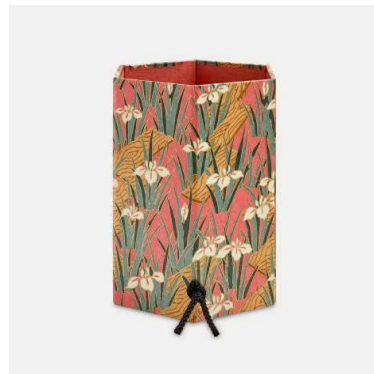
CODE: PP ES 031  
*White Cranes / Blue*



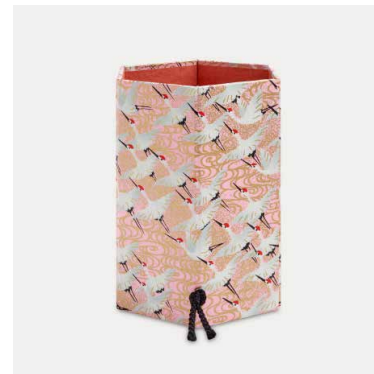
CODE: PP ES 103  
*Vintage Fans / Turquoise*



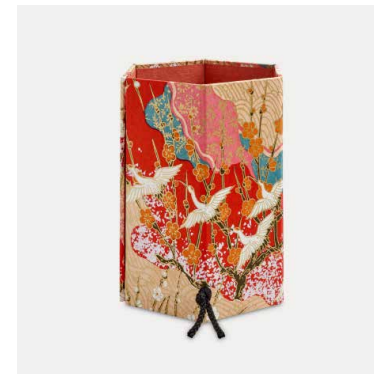
CODE: PP ES 107  
*Orange Blossom / Teal*



CODE: PP ES 100  
*Water Iris / Pink*



CODE: PP ES 108  
*White Cranes / Pink*



CODE: PP ES 110  
*Pattern Cranes Collage / Red*



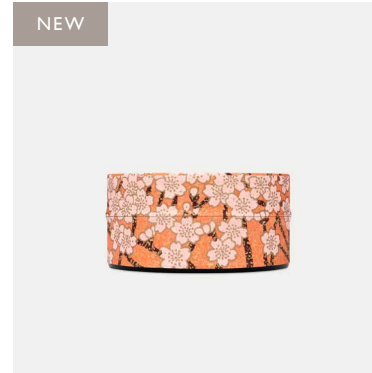
KEEPSAKE TINS



**CODE: KP ES 107**  
*Orange Blossom / Teal*



**CODE: KP ES 118**  
*Turquoise Floral*



**CODE: KP ES 133**  
*Blossom Branches / Peach*



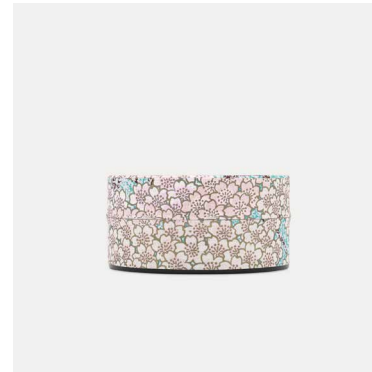
**CODE: KP ES 134**  
*Rolling Hills / Blue / Peach*



**CODE: KP ES 031**  
*White Cranes / Blue*



**CODE: KP ES 127**  
*Nouveau Flowers*



**CODE: KP ES 117**  
*Blossom Branches*



**CODE: KP ES 128**  
*Bouquet Spray / Pink*

KEEPSAKE TINS



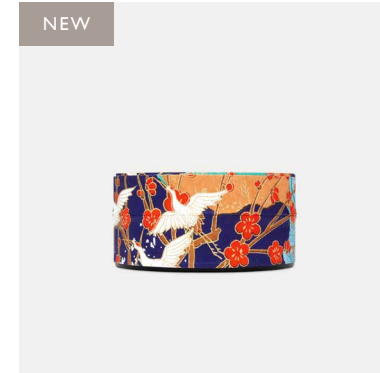
**CODE: KP ES 130**  
*Tropical Foliage / Blue*



**CODE: KP ES 131**  
*Pink Blossom / Dark Blue*



**CODE: KP ES 139**  
*Red Blossom / Cobalt Blue*



**CODE: KP ES 138**  
*Collage Cranes / Blue*



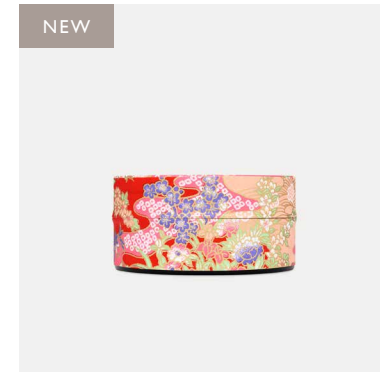
**CODE: KP ES 132**  
*Mint / Yellow Petals / Pink*



**CODE: KP ES 100**  
*Water Iris / Pink*



**CODE: KP ES 110**  
*Pattern Cranes Collage / Red*



**CODE: KP ES 140**  
*Red / Mint Floral*



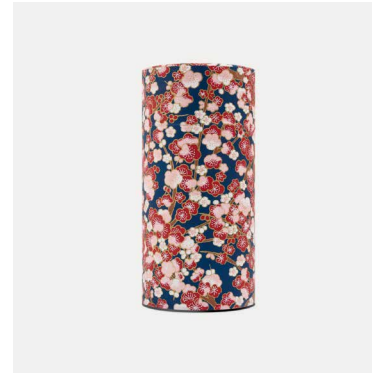
TEA TINS



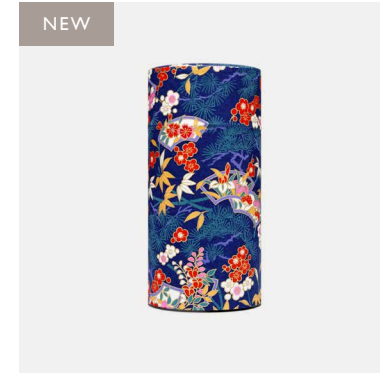
**CODE: TT ES 130**  
*Tropical Foliage / Blue*



**CODE: TT ES 115**  
*Bouquet Spray / Dark Blue*



**CODE: TT ES 131**  
*Pink Blossom / Dark Blue*



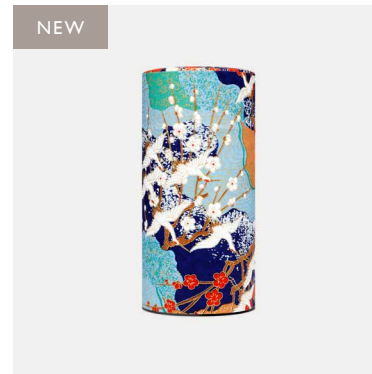
**CODE: TT ES 139**  
*Red Blossom / Cobalt Blue*



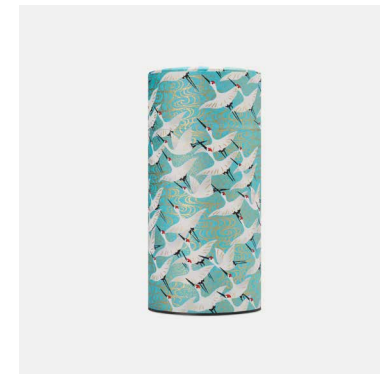
**CODE: TT ES 116**  
*Ice Blossom / Blue*



**CODE: TT ES 039**  
*White Blossom / Blue*



**CODE: TT ES 138**  
*Pattern Collage / Blue*

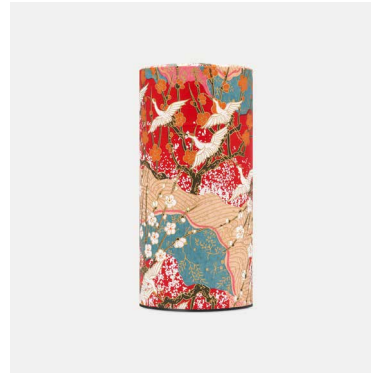


**CODE: TT ES 031**  
*White Cranes / Blue*

TEA TINS



**CODE: TT ES 107**  
*Orange Blossom / Teal*



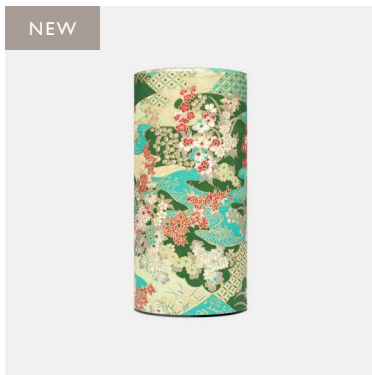
**CODE: TT ES 110**  
*Pattern Cranes Collage / Red*



**CODE: TT ES 133**  
*Blossom Branches / Peach*



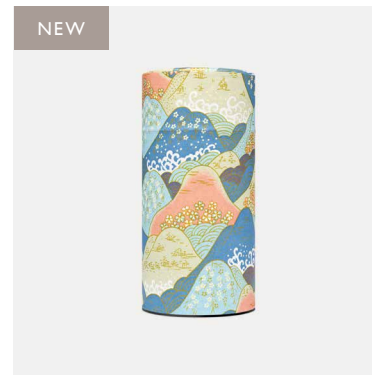
**CODE: TT ES 100**  
*Water Iris / Pink*



**CODE: TT ES 118**  
*Turquoise Floral*



**CODE: TT ES 103**  
*Vintage Fans / Turquoise*



**CODE: TT ES 134**  
*Rolling Hills / Blue / Peach*



**CODE: TT ES 126**  
*Orange Daisies / Peach*

TEA TINS



**CODE: TT ES 129**  
*Bouquet Spray / Cornflower*



**CODE: TT ES 140**  
*Red / Mint Floral*



**CODE: TT ES 047**  
*Pink / Red Daisies / Blue*



**CODE: TT ES 090**  
*Pink / Yellow Petals / Blue*



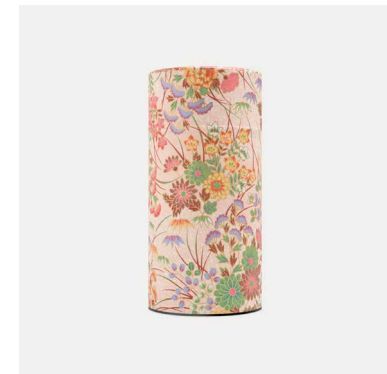
**CODE: TT ES 117**  
*Blossom Branches*



**CODE: TT ES 127**  
*Nouveau Flowers*



**CODE: TT ES 111**  
*Pink Hydrangea / Mint*



**CODE: TT ES 128**  
*Bouquet Spray / Pink*



# LAMPSHADE DESIGNS

SILK SCREEN LAMPSHADES



**CODE: DL(\*) ES 119**  
*Branches / Pink*  
\* 30 / 45 cm



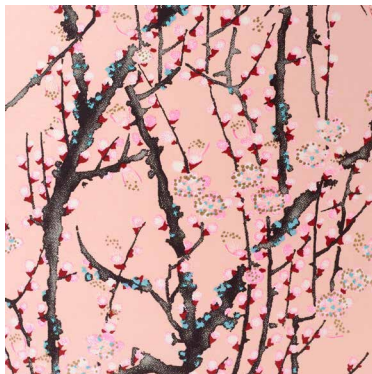
**CODE: DL(\*) ES 120**  
*Hawthorn Flowers / Blue*  
\* 30 / 45 cm



**CODE: DL(\*) ES 121**  
*Blue Acer Leaves*  
\* 30 / 45 cm



**CODE: DL(\*) ES 122**  
*Pink Acer Leaves*  
\* 30 / 45 cm



*NB: Non-directional print – can be used for lamp base or pendant*

## SOUGARA LAMPSHADES



**CODE: DL20 SOU 098/T**  
*Rose Gold Clouds*  
20 cm



**CODE: DL20 SOU 081/T**  
*Cranes Clouds*  
20 cm



**CODE: DL20 SOU 080/T**  
*Gold Clouds*  
20 cm



**CODE: DL20 SOU 081/T**  
*Mint Green Clouds*  
20 cm



**CODE: DL20 SOU 085/T**  
*Blue Pink Clouds*  
20 cm



*NB: Directional print – please specify if you require Lampbase / Ceiling Fitting*

SOUGARA LAMPSHADES



**CODE: DL(\*) SOU 080**  
*Gold Peacock*  
\* 30 / 45 cm



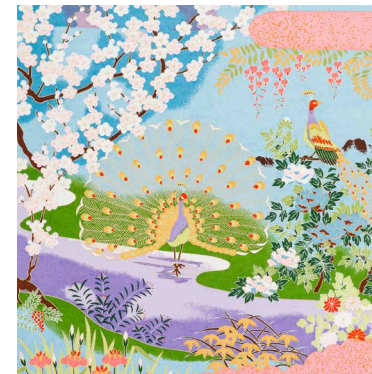
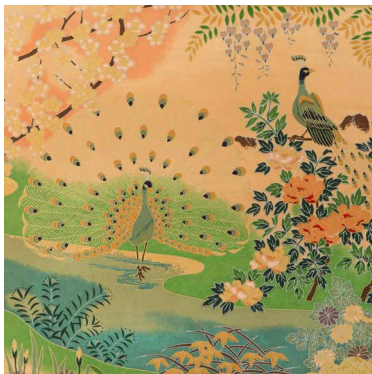
**CODE: DL(\*) SOU 980**  
*Rose Gold Peacock*  
\* 30 / 45 cm



**CODE: DL(\*) SOU 082**  
*Mint Green Peacock*  
\* 30 / 45 cm



**CODE: DL(\*) SOU 085**  
*Blue / Pink Peacock*  
\* 30 / 45 cm



*NB: Directional print – please specify if you require Lampbase / Ceiling Fitting*

SOUGARA LAMPSHADES



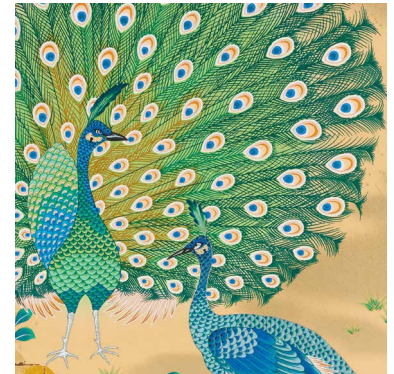
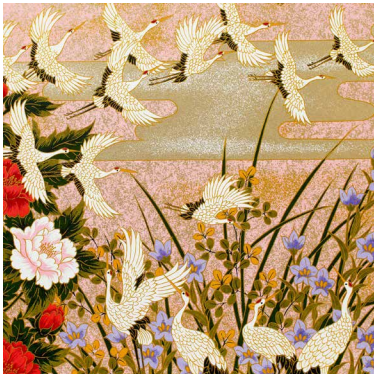
**CODE: DL(\*) SOU 081**  
*Flying Cranes Pink*  
 \* 30 / 45 cm

**CODE: DL(\*) SOU 083**  
*Alpine Cranes / Orange*  
 \* 30 / 45 cm

**CODE: DL(\*) SOU 084**  
*Alpines Blue*  
 \* 30 / 45 cm

**CODE: DL20 SOU 113**  
*Mt Fuji*  
 25 cm

**CODE: DL20 SOU 112**  
*Majestic Peacock*  
 40 cm



*NB: Directional print – please specify if you require Lampbase / Ceiling Fitting*

FABRIC / SILK SCREEN LAMPSHADES



**CODE: FDL(\*) MT / ES 119**  
*Mint / Branches / Pink*  
\* 25 / 35 / 45 / 55 cm



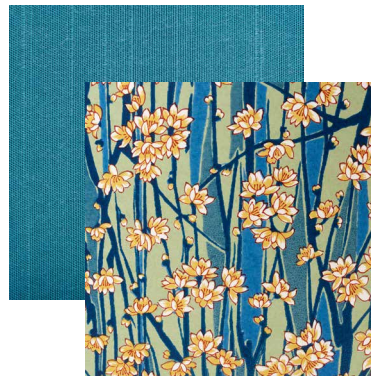
**CODE: FDL(\*) PT / ES 120**  
*Petrol Blue / Hawthorn Flowers*  
\* 25 / 35 / 45 / 55 cm



**CODE: FDL(\*) IK / ES 121**  
*Ink Blue / Blue Acer Leaves*  
\* 25 / 35 / 45 / 55 cm



**CODE: FDL(\*) EM / ES 122**  
*Emerald / Pink Acer Leaves*  
\* 25 / 35 / 45 / 55 cm



*NB: Non-directional print – can be used for lamp base or pendant*

FABRIC / SOUGARA LAMPSHADES



**CODE: FDL(\*) EM / SOU 080**

*Emerald / Gold Peacock*

\* 25 / 35 / 45 / 55 cm



**CODE: FDL(\*) CP / SOU 080**

*Copper / Gold Peacock*

\* 25 / 35 / 45 / 55 cm



**CODE: FDL(\*) CO / SOU 098**

*Coral / Rose Gold Peacock*

\* 25 / 35 / 45 / 55 cm



**CODE: FDL(\*) MT / SOU 082**

*Mint / Mint Green Peacock*

\* 25 / 35 / 45 / 55 cm



*NB: Directional print – please specify if you require Lampbase / Ceiling Fitting*

FABRIC / SOUGARA LAMPSHADES



**CODE: FDL(\*) PT / SOU 085**  
*Petrol Blue / Pink Blue Peacock*  
\* 25 / 35 / 45 / 55 cm



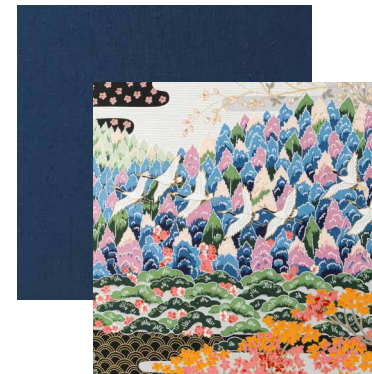
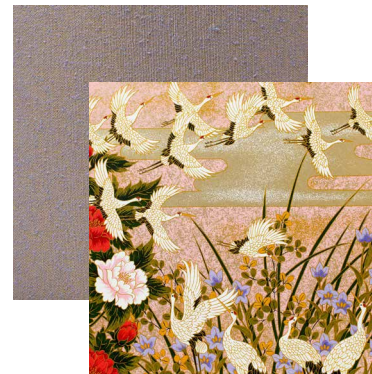
**CODE: FDL(\*) CH / SOU 081**  
*Champagne / Flying Cranes Pink*  
\* 25 / 35 / 45 / 55 cm



**CODE: FDL(\*) LG / SOU 081**  
*Lilac Gold / Flying Cranes Pink*  
\* 25 / 35 / 45 / 55 cm



**CODE: FDL(\*) IK / SOU 084**  
*Ink Blue / Alpine Cranes Blue*  
\* 45 / 55 cm



*NB: Directional print – please specify if you require Lampbase / Ceiling Fitting*



FABRIC / SOUGARA LAMPSHADES – SIZE GUIDE



SIZE: 25 cm  
*Clouds*



SIZE: 35 cm  
*Clouds & Flying Birds*



SIZE: 45 cm  
*Peacock Floral Landscape*



SIZE: 55 cm  
*Peacock Floral Landscape*



NB: Please visit our website for full internal design details.



PRODUCT	PRODUCT DESCRIPTION	PRICE	RRP	SKU	SIZE (MM)	SIZES (REF)	LEAVES	INTERIOR (GSM)	LEAVES COLOUR	FORMAT	FITTING	MIN ORDER	PACK SIZE
<b>CARDS &amp; WRAP</b>													
	Greeting Card	£1.55	£3.75	SSGC	107 x 155	—	—	—	—	—	—	12	12
	Silk Screen Wrap – Half Sheet	£3.35	£8.00	YP/M	660 x 480	M	—	—	—	—	—	12	12
	Silk Screen Wrap – Full Sheet	£6.70	£16.00	YP/L	970 x 660	L	—	—	—	—	—	12	12
	Paper Pack ( x 12 silk-screen paper squares)	£4.15	£9.95	APP/SS	150 x 150	—	—	—	—	—	—	6	6
<b>PENCILS &amp; PEN POTS</b>													
	Pencil Set ( x 7 assorted)	£6.25	£15.00	PS	65 x 180	—	—	—	—	—	—	3	3
	Pen Pot (collapsible)	£6.85	£16.50	PP	97 x 118	—	—	—	—	—	—	3	3
<b>DECORATIVE TINS</b>													
	Keepsake Tin	£5.45	£12.00	KP	73 D x 36	—	—	—	—	—	—	3	3
	Tea Tin	£10.50	£22.00	TT	73 D x 153	—	—	—	—	—	—	3	3
<b>NOTEBOOKS</b>													
<i>Essential Notebooks</i>													
	Paperback Notebook	£2.80	£6.00	PN	100 x 140 x 4	XS	14	120 g/m <sup>2</sup>	Ivory	Blank	—	6	6
	Pocket Notebook	£6.25	£15.00	PCKN	110 x 150 x 17	P	88	90 g/m <sup>2</sup>	Ivory	Blank	—	3	3
	A5 Notebook (Lined)	£8.75	£21.00	A5NL	150 x 215 x 14	M	72	85 g/m <sup>2</sup>	Ivory	Lined	—	3	3
	A5 Notebook (Blank)	£8.75	£21.00	A5NB	150 x 210 x 17	M	80	90 g/m <sup>2</sup>	Ivory	Blank	—	3	3
<i>Heritage Notebooks</i>													
	Small Notebook	£8.30	£20.00	SN	125 x 170 x 25	S	88	120 g/m <sup>2</sup>	Off-White	Blank	—	3	3
	Medium Notebook (A5)	£10.40	£25.00	MN	150 x 210 x 25	M	88	120 g/m <sup>2</sup>	Off-White	Blank	—	3	3
	Large Notebook	£12.50	£30.00	LN	175 x 245 x 20	L	64	120 g/m <sup>2</sup>	Off-White	Blank	—	3	3
<i>Classic Journals</i>													
	Small Journal	£9.15	£22.00	LSJ	125 x 170 x 24	S	110	110 g/m <sup>2</sup>	Ivory	Lined	—	3	3
	Medium Journal (A5)	£11.65	£28.00	LMJ	150 x 215 x 24	M	110	110 g/m <sup>2</sup>	Ivory	Lined	—	3	3
	Large Journal (B5)	£13.35	£32.00	LLJ	175 x 245 x 19	L	80	110 g/m <sup>2</sup>	Ivory	Lined	—	3	3
	Extra Large Journal (A4)	£15.80	£38.00	XLLJ	215 x 300 x 20	XL	96	85 g/m <sup>2</sup>	Ivory	Lined	—	3	3

PRODUCT	PRODUCT DESCRIPTION	PRICE	RRP	SKU	SIZE (MM)	SIZES (REF)	LEAVES	INTERIOR (GSM)	LEAVES COLOUR	FORMAT	FITTING	MIN ORDER	PACK SIZE
<b>ADDRESS BOOKS</b>													
	Small Address Book	£10.00	£24.00	PAB	125 x 170 x 15	S	48	110 g/m <sup>2</sup>	Ivory	—	—	3	3
	Medium Address Book (A5)	£12.50	£30.00	DAB	150 x 215 x 15	M	48	110 g/m <sup>2</sup>	Ivory	—	—	3	3
<b>DIARIES</b>													
<i>Week-to-view Diaries</i>													
	Pocket Weekly Diary	£9.15	£22.00	PWVD	100 x 135 x 15	XS	—	85 g/m <sup>2</sup>	Ivory	W/V	—	3	3
	A6+ Weekly Diary	£10.80	£26.00	A6+WVD	125 x 170 x 15	S	—	85 g/m <sup>2</sup>	Ivory	W/V	—	3	3
	A5 Weekly Diary	£12.50	£30.00	A5WVD	150 x 210 x 15	M	—	85 g/m <sup>2</sup>	Ivory	W/V	—	3	3
	Desk Weekly Diary	£15.80	£38.00	DWVD	175 x 245 x 15	L	—	85 g/m <sup>2</sup>	Ivory	W/V	—	3	3
<i>Day-per-page Diaries</i>													
	A6+ Daily Diary	£12.50	£30.00	A6+DPD	125 x 170 x 25	S	—	70 g/m <sup>2</sup>	Ivory	D/P	—	3	3
	A5 Daily Diary	£15.00	£36.00	A5DPD	150 x 210 x 25	M	—	70 g/m <sup>2</sup>	Ivory	D/P	—	3	3
<b>PHOTOGRAPH ALBUMS</b>													
<i>Landscape Albums</i>													
	Small Landscape Album	£16.20	£34.00	SLA	180 x 155 x 40	S	30	230 g/m <sup>2</sup>	Ivory	—	—	3	3
	Medium Landscape Album	£20.00	£48.00	MLA	230 x 195 x 40	M	30	230 g/m <sup>2</sup>	Ivory	—	—	3	3
	Large Landscape Album 30 / Ivory Leaves	£29.15	£70.00	LLA30/I	355 x 250 x 40	L	30	230 g/m <sup>2</sup>	Ivory	—	—	3	3
	Large Landscape Album 50 / Ivory Leaves	£35.80	£86.00	LLA50/I	355 x 250 x 60	L	50	230 g/m <sup>2</sup>	Ivory	—	—	3	3
<i>Square Albums</i>													
	Medium Square Album	£25.00	£60.00	MSA	230 x 230 x 60	M	50	230 g/m <sup>2</sup>	Ivory	—	—	3	3
	Large Square Album 30 / Ivory Leaves	£27.50	£66.00	LSA30/I	305 x 305 x 40	L	30	230 g/m <sup>2</sup>	Ivory	—	—	3	3
	Large Square Album 50 / Ivory Leaves	£34.15	£82.00	LSA50/I	305 x 305 x 60	L	50	230 g/m <sup>2</sup>	Ivory	—	—	3	3
<i>Sougara Albums</i>													
	Sougara Photograph Album	£120.80	£290.00	XLA	355 x 355 x 60	—	50	230 g/m <sup>2</sup>	Ivory	—	—	2	2
<i>Album Accessories</i>													
	Photo Mounts x 250	£2.15	£4.50	PC   250	64 x 105	—	—	—	—	—	—	6	6

FORMAT : W/V – Week-to-View D/P – Day-per-Page

PRODUCT	PRODUCT DESCRIPTION	PRICE	RRP	SKU	SIZE (MM)	SIZES (REF)	LEAVES	INTERIOR (GSM)	LEAVES COLOUR	FORMAT	FITTING	MIN ORDER	PACK SIZE
<b>GUEST BOOKS</b>													
	Square Guest Book	£16.70	£40.00	SGBB	215 x 215 x 23	—	84	120 g/m <sup>2</sup>	Off-White	Blank	—	3	3
	Landscape Guest Book	£18.75	£45.00	LGBL	265 x 220 x 18	—	80	110 g/m <sup>2</sup>	Ivory	Lined	—	3	3

## LAMPSHADES

<i>Silk-Screen Lampshades</i>													
	30cm Drum Lampshade	£58.00	£140.00	DL30	300 D	30	—	—	—	—	N/A*	2	2
	45cm Drum Lampshade	£85.00	£205.00	DL45	450 D	45	—	—	—	—	N/A*	2	2
<i>Sougara Lampshades</i>													
	20cm Drum Lampshade	£56.00	£135.00	DL20	200 D	20	—	—	—	—	B/C	2	2
	25cm Drum Lampshade ( <i>Fuji</i> )	£73.00	£175.00	DL25	250 D	25	—	—	—	—	B/C	2	2
	30cm Drum Lampshade	£73.00	£175.00	DL30	300 D	30	—	—	—	—	B/C	2	2
	40cm Lampshade ( <i>Peacock</i> )	£123.00	£295.00	DL40	400 D	40	—	—	—	—	B/C	2	2
	45cm Drum Lampshade	£110.00	£265.00	DL45	450 D	45	—	—	—	—	B/C	2	2
<i>Fabric / Silk-Screen Lampshades</i>													
	25cm Drum Lampshade	£75.00	£180.00	FDL25	250 D	25	—	—	—	—	N/A*	2	2
	35cm Drum Lampshade	£98.00	£235.00	FDL35	350 D	35	—	—	—	—	N/A*	2	2
	45cm Drum Lampshade	£120.00	£290.00	FDL45	450 D	45	—	—	—	—	N/A*	2	2
	55cm Drum Lampshade	£143.00	£345.00	FDL55	550 D	55	—	—	—	—	N/A*	2	2
<i>Fabric / Sougara Lampshades</i>													
	25cm Drum Lampshade	£81.00	£195.00	FDL25	250 D	25	—	—	—	—	B/C	2	2
	35cm Drum Lampshade	£106.00	£255.00	FDL35	350 D	35	—	—	—	—	B/C	2	2
	45cm Drum Lampshade	£137.00	£330.00	FDL45	450 D	45	—	—	—	—	B/C	2	2
	55cm Drum Lampshade	£168.00	£405.00	FDL55	550 D	55	—	—	—	—	B/C	2	2

\* Design is non-directional – therefore fitting does not need to be specified.

**FITTING** : B – Base Fitting    C – Ceiling Fitting

## ESMIE WHOLESALE TERMS & CONDITIONS

For a full listing of wholesale terms & conditions please visit:

[www.esmie.co.uk/wholesale-terms-conditions](http://www.esmie.co.uk/wholesale-terms-conditions)

By placing an order with us you are agreeing to these terms & conditions.

### PLACING ORDERS

Minimum order value £150 + vat.

Please login to your wholesale account on our website and place the order online: [esmie.co.uk/stockists-login](http://esmie.co.uk/stockists-login)

Please complete a **stockist application** if you are not already registered as a stockist. We will process your application and will email you with your username & password.

Alternatively please email your purchase order to: [info@esmie.co.uk](mailto:info@esmie.co.uk) – listing the product name/s & code/s / design code/s & quantities required.

### DELIVERY

All products are handmade to order. Please allow 2–4 weeks for delivery. During busy periods this may be up to 8 weeks. Carriage paid orders within UK Mainland (restrictions apply) – have a minimum order value of £400. For orders under this value – prices will be quoted on receipt of the order. They will be dependent on weight & delivery location. All international delivery charges will be quoted upon receipt of your order.

### PAYMENT

New UK customers will be sent a pro-forma invoice. 50% deposit is required before manufacturing of the order commences. The final 50% is required upon completion of the order. Goods will be despatched once that payment has cleared. All subsequent orders will be supplied on a 30 day account basis.

30 Day Account Customers – payment is to be made 30 days from the date on the invoice. We appreciate prompt payment, failure to make payment within the 30 days may result in the account reverting back to a pro-forma invoice basis as well as interest charges being applied.

International customers – goods are supplied on a pro-forma invoice basis only. Please note goods are supplied ex works, all bank charges, carriage, & customs duties are payable by the customer. Payment is to be made in UK Sterling.

### ONLINE CUSTOMERS

We are happy for our stockists to sell our products on their own website, we politely request that our own professional product photographs are used, these can be downloaded from our website when logged in as a stockist. We however strictly forbid our stockists to sell the products via any third party marketplace platforms.

### PLEASE NOTE

All products are handmade and are subject to slight variation, we consider this part of their beauty & makes them truly unique. Changes in materials may occur at short notice.

### COPYRIGHT

Esmie Ltd – All Rights Reserved. This is inclusive of all paper designs which are subject to copyright laws.

### CONTACT

Please do not hesitate to contact us if you have any queries.

TELEPHONE: +44 (0)1428 685766

EMAIL: [info@esmie.co.uk](mailto:info@esmie.co.uk)

Address: Building 4E2 & 4F Rudgwick Brickworks, Lynwick Street, Rudgwick, West Sussex RH12 3UW

---

TO PLACE YOUR ORDER PLEASE VISIT:  
[WWW.ESMIE.CO.UK/STOCKISTS-LOGIN/](http://WWW.ESMIE.CO.UK/STOCKISTS-LOGIN/)