



20 21  
GIFT OF THE YEAR  
WINNER



# JULIA GASH @ PARKWOOD SPRINGS

A TAILOR MADE COLLECTION OF SUSTAINABLE AND STYLISH SOUVENIRS



NEW LOWER MINIMUM  
ORDER QUANTITY



**PARKWOOD  
SPRINGS**

[www.parkwood-springs.com](http://www.parkwood-springs.com)

# JULIA GASH @ PARKWOOD SPRINGS

Working closely with British designer Julia Gash, Parkwood Springs make stylish and sustainable souvenirs for tourists with taste and staycationers who simply want to love up their local.

## ABOUT PARKWOOD SPRINGS ETHICALLY SOURCED LICENSED MERCHANDISE

We license artists and promote their creative work on an array of printed products. We provide beautiful ranges of ethically sourced products printed with the designs of creative distinguished artists from around the world.

Julia's hand drawn illustrations are renowned the world over; to stock the Julia Gash range of contemporary and sustainable giftware in your store please contact us.

[www.parkwood-springs.com](http://www.parkwood-springs.com)



## ABOUT THE DESIGNER

Julia Gash is a British artist who is passionate about print. She creates hand drawn illustrations using brush and ink and collaborates with licensees worldwide to create sustainable and stylish gift and souvenir ranges.

Julia's distinctive handwriting is expressed as spirited and creative line drawings with flat and textured colour palettes. Over the past four years Julia has created a unique and everlasting archive of illustrations celebrating the unique culture of cities from all around the world, which have been made into gorgeous gifts.

[www.juliagash.co.uk](http://www.juliagash.co.uk)

LOVING THE WORLD AROUND HER

## CREATIVE MAPS FOR CULTURE VULTURES AND TOURISTS WITH TASTE

Julia creates Cityscapes: Map like illustrations of specific cities, towns or buildings from around the world that celebrate local culture and iconic landmarks using a naïve and playful handwriting.

Building your range is easy with a wide choice of natural tote bags and purses, cool home accessories, amazing art prints and stylish stationery.

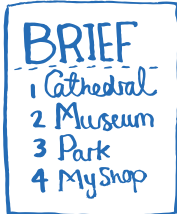
Parkwood Springs works closely with you to ensure that your exclusive Cityscape meets your brief and is delivered on time.



# HOW IT WORKS...

let's GO

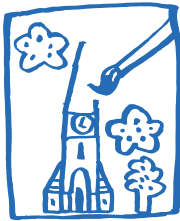
## STEP 1. CREATE YOUR BRIEF



Simply complete and email us the Parkwood Springs Design Brief and Agreement with your top 10 must have features.



## STEP 2. MADE TO ORDER

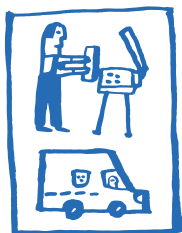


Julia creates an illustration from your brief using brush and ink.

You approve the design and visual mock ups before we go to print.



## STEP 3. PRINT, PACKAGING & POST



We work with local and sustainable suppliers to produce high quality, eco-friendly products and send them to you by courier wherever you are in the world.





Choose from a range of large, medium and mini tote bags and zip purses made from natural or denim 100% cotton heavyweight canvas as the perfect backdrop for your design. Pre-washed to achieve superior print quality, our canvas totes and accessory pouches are made in fair trade certified factories in India then printed with ecological water-based inks in the UK.

**BEST SELLER**

**LARGE NATURAL PORTRAIT TOTE**

SIZE: W37 x H42 x D11cm

SCREEN PRINTED: ZJGBAGN001B PRINT MIN: 50  
LEAD TIME: 6-8 weeks from approval

Printed one side, gusseted.  
Product comes 100% cotton as standard with a product barcode and Julia Gash swing ticket.

Extras: Customer specified barcode  
Customer specific swing tag  
Customer specific button badge

**LARGE NATURAL LANDSCAPE TOTE**

SIZE: W42 x H36 x D11cm

SCREEN PRINTED: ZJGBAGN002B PRINT MIN: 50  
LEAD TIME: 6-8 weeks from approval

Printed one side, gusseted.  
Product comes 100% cotton as standard with a product barcode and Julia Gash swing ticket.

Extras: Customer specified barcode  
Customer specific swing tag  
Customer specific button badge



**LARGE DENIM PORTRAIT TOTE**

SIZE: W37 x H42 x D11cm

SCREEN PRINTED: ZJGBAGD001B PRINT MIN: 100  
LEAD TIME: 6-8 weeks from approval

Printed one side, gusseted.  
Product comes 100% cotton as standard with a product barcode and Julia Gash swing ticket.

Extras: Customer specified barcode  
Customer specific swing tag  
Customer specific button badge

NATURAL  
HANDLES!



### LARGE NATURAL PORTRAIT TOTE

SIZE: W37 x H42 x D11cm

SCREEN PRINTED: ZJGBAGN001A PRINT MIN: 50

LEAD TIME: 6-8 weeks from approval

Printed one side, gusseted.

Product comes 100% cotton as standard with a product barcode and Julia Gash swing ticket.

**Extras:** Customer specified barcode  
Customer specific swing tag  
Customer specific button badge



### LARGE NATURAL LANDSCAPE TOTE

SIZE: W42 x H36 x D11cm

SCREEN PRINTED: ZJGBAGN002A PRINT MIN: 50

LEAD TIME: 6-8 weeks from approval

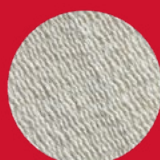
Printed one side, gusseted.

Product comes 100% cotton as standard with a product barcode and Julia Gash swing ticket.

**Extras:** Customer specified barcode  
Customer specific swing tag  
Customer specific button badge

## CHOOSE YOUR HANDLES. ADD A BUTTON BADGE

Each bag comes with natural or striped handles as standard.  
Why not add a customised 25mm button badge at an additional cost?



NATURAL

OR



RED, WHITE  
& BLUE

+



OR



**SPECIAL ORDER**

We can make other bag sizes and specifications to special order, subject to designer approval. (SCREEN PRINTED ONLY)

**MINI TOTE - ACCESSORY POUCH COMBO OFFER**

Why not split the quantity and get the best of both worlds!

For instance, if ordering a quantity of 100 of the denim products you can mix it up and buy half (50) Accessory Pouch and the other half (50) Mini Totes.

Why is this possible? Because the print design and size is the same, this creates a cost-effective way to expand your range.



**MEDIUM NATURAL PORTRAIT TOTE**  
ZJGBAGN005B PRINT MIN: 300

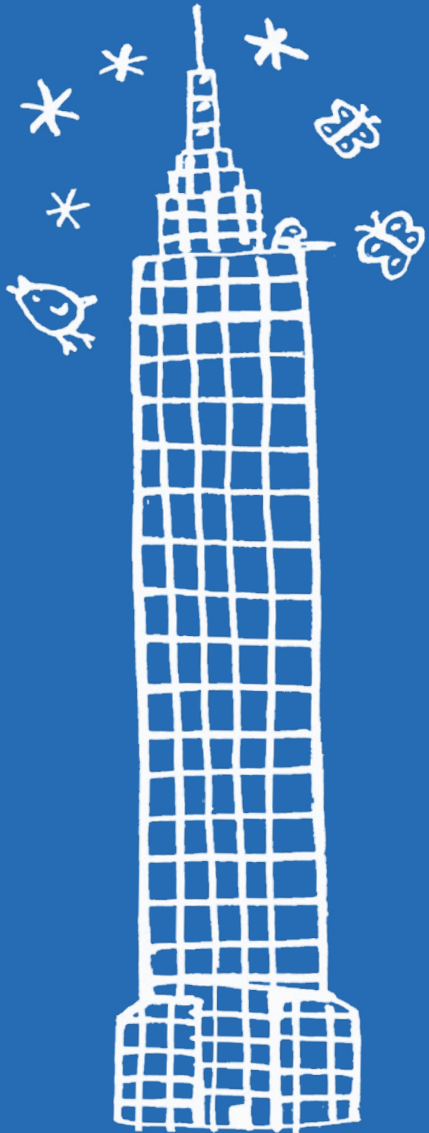
**MEDIUM DENIM PORTRAIT TOTE**  
ZJGBAGD005B PRINT MIN: 300

SIZE: W37 x H42 x D10cm

**LEAD TIME: 6-8 weeks from approval**

Printed one side, bottom gusset. Product comes 100% cotton as standard with a product barcode and Julia Gash swing ticket.

**Extras:** Customer specified barcode / Customer specific swing tag / Customer specific button badge





### MINI NATURAL TOTE

SIZE: W21 x H21 x D12cm

SCREEN PRINTED: ZJGBAGN003B PRINT MIN: 100

LEAD TIME: 6-8 weeks from approval

Printed one side, gusseted.

Product comes 100% cotton as standard with a product barcode and Julia Gash swing ticket.

**Extras:** Customer specified barcode  
Customer specific swing tag  
Customer specific button badge



### MINI DENIM TOTE

SIZE: W21 x H21 x D12cm

SCREEN PRINTED: ZJGBAGD003B PRINT MIN: 100

LEAD TIME: 6-8 weeks from approval

Printed one side, gusseted.

Product comes 100% cotton as standard with a product barcode and Julia Gash swing ticket.

**Extras:** Customer specified barcode  
Customer specific swing tag  
Customer specific button badge

LOWER ORDER QUANTITY



### NATURAL ACCESSORY POUCH

SIZE: W28 x H18cm

SCREEN PRINTED: ZJGBAGN004 PRINT MIN: 100

LEAD TIME: 6-8 weeks from approval

Printed one side, gusseted.

Product comes 100% cotton as standard with a product barcode and Julia Gash swing ticket.

**Extras:** Customer specified barcode  
Customer specific swing tag  
Customer specific button badge

BEST SELLER



### DENIM ACCESSORY POUCH

SIZE: W28 x H18cm

SCREEN PRINTED: ZJGBAGD004 PRINT MIN: 100

LEAD TIME: 6-8 weeks from approval

Printed one side, gusseted.

Product comes 100% cotton as standard with a product barcode and Julia Gash swing ticket.

**Extras:** Customer specified barcode  
Customer specific swing tag  
Customer specific button badge

LOWER ORDER QUANTITY

# STATIONERY & SOUVENIRS

Brooches and badge sets that big up your town, magnets that marvel at iconic buildings, key rings as charming keepsakes and greeting cards that make cartography cool... Julia Gash and Parkwood Springs have created a range of cool and customisable souvenirs for globe trotters that need to travel light.

ALL PRODUCTS CAN BE SENT WITHOUT BAG PACKAGING UPON REQUEST

## GREETING CARD

SIZE: 14.8 x 10.5cm - 300gsm



ZIJGCG004

PRINT MIN: 200

LEAD TIME: 6-8 weeks from approval

Supplied with white envelope and backing insert featuring printed barcode  
Individually bagged.

## SQUARE GREETING CARD

SIZE: 15 x 15cm / 300gsm



ZIJGCG002

PRINT MIN: 200

LEAD TIME: 6-8 weeks from approval

Supplied with red envelope and backing insert featuring printed barcode  
Individually bagged.

## BALL PEN

SIZE: W5 x H19 x D1cm (Packaged)



ZJGPEN018

PRINT MIN: 250

LEAD TIME: 6-8 weeks from approval

Cardboard sleeve with barcode printed on packaging.  
Full colour print.

## BAMBOO PEN

SIZE: W5 x H19 x D1cm (Packaged)



ZJGPEN019

PRINT MIN: 250

LEAD TIME: 6-8 weeks from approval

Cardboard sleeve with barcode printed on packaging.  
Single colour print of customers choice.

## BAMBOO PENS

SIZE: W7 x H19 x D1cm (Packaged)



ZJGPENPAC019

PRINT MIN: 84

LEAD TIME: 6-8 weeks from approval

Cardboard sleeve with barcode printed on packaging.  
Single colour print of customers choice.

## TIN PLATE MAGNET

SIZE: 7.8 x 5.4cm



ZIJGMAG001

PRINT MIN: 100

LEAD TIME: 6-8 weeks from approval

Packaged size: 15 x 10.5cm  
Packaging: Cardboard sleeve with barcode printed on reverse.

## KEY RING (METAL)

SIZE: 4 x 2.8cm

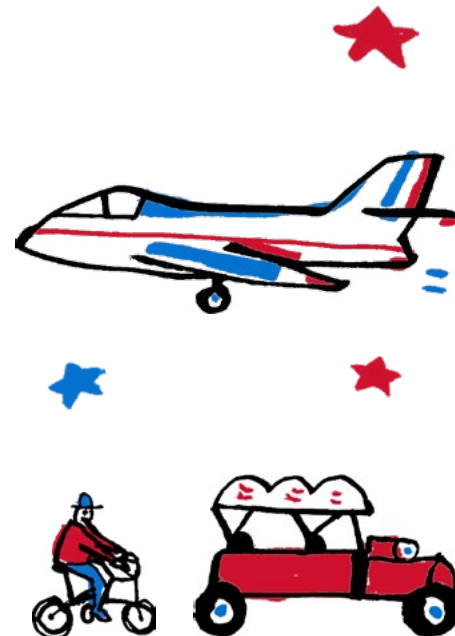


ZIJGKEY003

PRINT MIN: 200

LEAD TIME: 6-8 weeks from approval

Packaged size: 11 x 5.5cm.  
Printed one side only. Packaging: Cardboard hanger card with barcode printed on reverse.





**SINGLE POSTCARDS**

SIZE: 14.8 x 10.5cm / 300gsm



**ZIJGPC001** PRINT MIN: 100  
**LEAD TIME: 6-8 weeks from approval**  
 Supplied 4 colour front, black on reverse Bar-code printed on reverse  
 No packaging.

**SINGLE WOODEN POSTCARD**

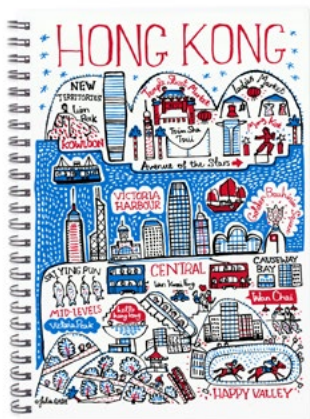
SIZE: W15 x H10 x D0.3cm



**ZJGPC003** PRINT MIN: 100  
**LEAD TIME: 6-8 weeks from approval**  
 Barcode printed on reverse  
 No packaging.

**NOTEPAD**

SIZE: 21 x 14.8cm. COVER: 300gsm



BACK COVER

**ZIJGSTA001** PRINT MIN: 100  
**LEAD TIME: 6-8 weeks from approval**  
 Printed cover with 70pp, 70gsm blank sheets Bound with black wire  
 No packaging with barcode printed on reverse.



**ART PRINT UNFRAMED**

SIZE: 11 x 14in / 340gsm

**ART PRINT FRAMED**

SIZE: 39cm x 31cm / 340gsm

**ZIJGPOS001** PRINT MIN: 30  
**LEAD TIME: 6-8 weeks from approval**  
 Bagged and packaged with backing card Bar-code label attached to bag.

**ZIJGPOSF001** PRINT MIN: 6  
**LEAD TIME: 6-8 weeks from approval**  
 Frame: 39cm x 31cm, 3cm deep. Choose from White, Black or Natural Wood Effect Frame.

**COLOURING ACTIVITY PACK**

SIZE: (21 x 29.7cm)



**WITH PENCILS**  
**WITHOUT PENCILS**  
PRINT MIN: 250  
**LEAD TIME: 6-8 weeks from approval**

**ZIJGCOLP**  
**ZIJGCOL**

Four pages of illustrations, puzzles and activities, created by Julia Gash in a neat, eco-friendly, cellophane pack with eurohanger. Four colour pencils are optional.

**A4 STICKER SHEET**

SIZE: A4 (21 x 29.7cm)



**ZIJGSTIC001** PRINT MIN: 100  
**LEAD TIME: 6-8 weeks from approval**  
Add an extra sheet by taking icons from your activity pack and adding a Sticker sheet. Die cut peelable stickers

**DESK PLANNER**

SIZE: A3 (29.7 x 42cm), 100gsm, 52pp



**ZIJGSTA002** PRINT MIN: 200  
**LEAD TIME: 4 weeks from approval**

52 sheets of sustainable matt paper printed with same design and glue bound along the long edge. Bagged with barcode on reverse.

**MAGNETIC MEMO PAD**

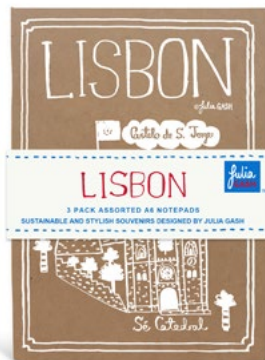
SIZE: 21 x 10cm, 100gsm, 40pp



**ZIJGSTA003** PRINT MIN: 100  
**LEAD TIME: 6-8 weeks from approval**  
40 sheets of sustainable matt paper printed with the same design and glue bound along short edge. Backed with grey board & two magnets. Belly band with barcode on reverse.

**3 PACK A5 NOTEPADS**

SIZE: 21 x 14.8cm, COVER: 300gsm



**ZIJGSTA006** PRINT MIN: 100  
**LEAD TIME: 6-8 weeks from approval**  
Cover: White with full colour print.  
Inside: Lined paper.  
Packaging: Belly band.

**ZIJGSTA007** PRINT MIN: 100  
**LEAD TIME: 6-8 weeks from approval**  
Cover: Kraft with white print  
Inside: Lined paper.  
Packaging: Belly band.

**COMPACT MIRROR**

SIZE: 7.5cm



**ZIJGMIR001** PRINT MIN: 100  
**LEAD TIME: 6-8 weeks from approval**  
Packaged size: 13 x 8cm  
Packaging: Cardboard sleeve with barcode printed on reverse.

## BADGE SET

SIZE: 3.8cm



**ZJGBAD001** PRINT MIN: 100  
**LEAD TIME: 6-8 weeks from approval**  
Packaged size: 15 x 10.5cm  
Badge size: 3.8cm  
Packaging: Backing card with barcode printed on reverse.

## EMBROIDERED IRON-ON BADGE

SIZE: 6cm



**ZJGBADG** PRINT MIN: 250  
**LEAD TIME: 6-8 weeks from approval**  
Packaged size: 10.5 x 15cm  
Badge size: 6cm  
Packaging (optional): Backing card with barcode printed on reverse. Bagged



## PENCIL TUBE

SIZE: 19 x 3.5cm



**ZJGPENT001** PRINT MIN: 100  
**LEAD TIME: 6-8 weeks from approval**  
Set of 12 colouring pencils  
Packaging: Cardboard tube with design on the outside.

## A5 STICKER SET

SIZE: 14.8 x 21cm



**ZIJGSTIC002** PRINT MIN: 100  
**LEAD TIME: 6-8 weeks from approval**  
Packaging: Header card with barcode printed on reverse. Bagged.

## BOOKMARK

SIZE: 18 x 5cm, 300gsm



**ZIJGBOO001** PRINT MIN: 100  
**LEAD TIME: 6-8 weeks from approval**  
Finishing: Blue ribbon with barcode printed on reverse.

## WOODEN KEY RING

SIZE - CUSTOM CUT



**ZJGKEY001** PRINT MIN: 250  
**LEAD TIME: 6-8 weeks from approval**  
Packaged size: 13 x 5cm  
Size: Custom  
Packaging: Hanger card with barcode printed on reverse.

## WOODEN MAGNET

SIZE - CUSTOM CUT



**ZJGMAG002** PRINT MIN: 250

## WOODEN BROOCH

SIZE - CUSTOM CUT



**ZJGBRO001** PRINT MIN: 250

**PRINT MIN. 250 – CAN BE SPLIT BETWEEN WOODEN KEY RING, MAGNET, AND BROOCH**

# HOMEWARES

## CERAMIC MUG

SIZE: 8.3 x 9.5cm, 10oz

Parkwood Springs' Cityscape homewares celebrate your love for the world, whether it's your hometown or a far-flung destination. Printed on a tea towel, apron or mug, a Cityscape evokes memories of places that are close to your heart and brings them into your home.



ZIJGMUG001

PRINT MIN: 72

LEAD TIME: 6-8 weeks from approval

**BEST SELLER**

## COASTERS

SIZE: 9.4 x 9.4cm

## TIN MUG

SIZE: 8 x 7.8cm

## BONE CHINA MUG

SIZE: 8.5 x 7.5cm



ZIJGCOS001

PRINT MIN: 100

LEAD TIME: 6-8 weeks from approval

Packaged size: 14.5 x 11cm

Cardboard sleeve with barcode printed on reverse.



ZIJGMUG002

PRINT MIN: 96

LEAD TIME: 6-8 weeks from approval

Printed full colour on outside only.



ZIJGMUG003

PRINT MIN: 72

LEAD TIME: 6-8 weeks from approval

Printed full colour on outside only, each mug is delivered individually packed in a plain white box with a colour label showing the mug design. The print on this mug will slightly vary from other mugs due to the bone china being more porous.

## TEAR OFF PAPER PLACEMAT

SIZE: A3 (29.7 x 42cm), 100gsm, 52pp

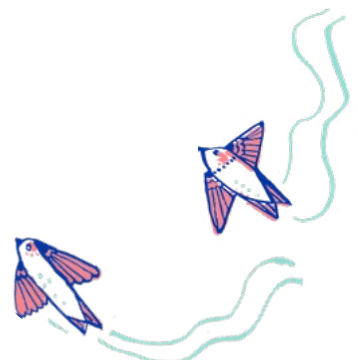


ZIJGSTA005

PRINT MIN: 200

LEAD TIME: 6-8 weeks from approval

52 sheets of sustainable matt paper printed with same design and glue bound along the long edge. Bagged with barcode on reverse.





**TEA TOWEL**  
SIZE: 46 x 66cm

**ZJG-TEAOW001** PRINT MIN: 50  
**LEAD TIME: 6-8 weeks from approval**  
5oz cotton. Packaged with belly band or header card. Barcode printed on reverse. Or loose, no barcode.

**PACKAGING**

There are two packaging options available:

- The belly band. Surrounds the carefully folded tea towel to keep it neat for display.
- The header card. With euro hook, this is perfect for on-wall display.



**APRON**

SIZE: 64 x 87cm

**SCREEN PRINTED: ZJG-906800-10-APR-OPTWHI-PCT** PRINT MIN: 50  
**LEAD TIME: 6-8 weeks from approval**

**EDGE TO EDGE (Pictured): ZJGAPRDN001** PRINT MIN: 100  
**LEAD TIME: 6-8 weeks from approval**

100% natural cotton drill, 235gsm / 10oz Screen printed  
Packaged with belly band, barcode printed on reverse  
Or loose, no barcode.



# T-SHIRTS



## NATURAL

ZIJGTSN001

PRINT MIN: 100



## WHITE

ZIJGTSW001

PRINT MIN: 100

**LEAD TIME: 6-8 weeks from approval**

Material: 100% semi-combed ringspun cotton.

Ribbed collar. Taped neck.

Tubular body. Twin needle stitching.

Weight: 190 gsm

Packaged with belly band and barcode printed on reverse or loose with a swing tag..

**SIZES AVAILABLE: Small (S), Medium (M), Large (L), Extra Large (XL), Extra Extra Large (XXL)**

Minimum order quantity of 10 in any size.



designed by

**DASHER**



Dasher is the diffusion brand of Julia Gash and has its own distinctive logo. Using a one colour outline and contrasting solid colour background, the design style is bold and the handwritten script of Cityscapes is absent. Icons featured are more leisure related and the brand and corresponding product lines are aimed at a younger market. The I HEART City theme in Julia's handwriting also forms part of the Dasher brand.

**Dasher is also available on all of the products in the Julia Gash range except stripe handled bags.**



# COLOUR YOUR CITYSCAPE

Create your own colour scheme for your design or choose from our 20 preselected colour palettes...  
Includes 3 colour print. Added cost for additional print on textile products only.

CLASSIC



- BLACK
- P186c
- P285c

MEDITERRANEAN



- BLACK
- P178c
- P3125c

CELTIC



- P280c
- P186c
- P354c

GALLIC



- P280c
- P186c
- P283c

BREEZE



- P2915c
- P177c
- P7692c

MOUNTAIN HIGH



- P285c
- P177c
- P571c

COUNTRY



- BLACK
- P186c
- P285c
- P354c

RIVIERA



- P280c
- P166c
- P7455c
- P387c

AUSSIE



- P446c
- P285c
- P354c
- P136c

COOL AUSSIE



- P446c
- P283c
- P354c
- P136c

VINTAGE SEASIDE



- P446c
- P3125c
- P032c
- P136c

ROMAN



- P446c
- P351c
- P3125c
- P149c

FOREST



- P306c
- P165c
- P359c
- P7736c

DISCOVERY



- P3955c
- P177c
- P571c
- P285c

TROPICAL



- BLACK
- P177c
- P3125c
- P354c

COASTAL



- P446c
- P177c
- P283c
- P354c

GRAYSON



- P3955c
- P177c
- P283c
- P7455c

PASTORAL



- P032c
- P351c
- P285c
- P155c

CABINCORE



- P3955c
- P177c
- P285c
- P354c

PRAIRIE



- P127c
- P032c
- P483c
- P563c

OR CHOOSE YOUR OWN COLOUR SCHEME!



# OTHER DESIGNS...

Julia can create beautiful illustrations for any theme. Here are some examples of those designs on products we have created.



WILDLIFE!



MUSEUMS & HERITAGE!

UNIVERSITIES & SCHOOLS!



HOTELS & RESORTS

PORTRAITS!

FOOD!



# WE OFFER GREAT POINT OF SALE SOLUTIONS FOR THE JULIA GASH RANGE IN YOUR STORE

We can help bring your new Julia Gash range to life with Foamex board graphics to enhance consumer engagement. Reinforce the brand with icons from the range or a particular message you want to communicate.

CHOOSE YOUR FOAMEX ICONS!

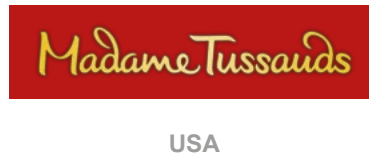


SHOW CARD!

Ask our sales team for more information at [sales@parkwood-springs.com](mailto:sales@parkwood-springs.com) or call +44 (0) 114 698 0120

# CURRENT STOCKISTS

Julia Gash's products are available at the following outlets



20  21

**GIFT OF THE YEAR**  
WINNER



**PARKWOOD SPRINGS**

#### CONTACT US

Our team in the UK and Japan offer excellent customer service and ensure that your order arrives on time, keeping in touch with you with regular updates. Get in touch to talk through a Cityscape or Collection collaboration with our team around the world...

#### UK & EUROPE OFFICE

E: [sales@parkwood-springs.com](mailto:sales@parkwood-springs.com)  
T: +44 (0) 114 698 0120

#### JAPAN OFFICE

E: [hello@see-saw.de](mailto:hello@see-saw.de)  
T: +49(0)30 5557 8068  
Sales Agent: 龍野 菊江  
Kikue Ryuno

**Julia Gash supports a green and clean supply chain. Her products are made using sustainable materials in the UK or with trusted partners overseas. Julia Gash products bring green street cred to your store, which resonates with conscientious consumers worldwide.**



@pws\_ecomerch

[www.parkwood-springs.com](http://www.parkwood-springs.com)