



KELPI STUDIO

WHOLESALE CATALOGUE

ABOUT



Kelpi Studio was formed by Kareni Lowes in Falmouth, Cornwall in 2021 alongside her career as a freelance print designer.

Her gifting collections are inspired by the fauna and flora of the ocean and landscape that surrounds us in the UK. She designs seaweed paper stationery, art prints and creates hammered brass and recycled silver jewellery, curating a unique gifting collection for any retail space.

Kelpi Studio's mission is to ensure the environment is at the heart of each product. Everything is made from recycled or reusable materials and is made to order, keeping waste to a minimum. All external suppliers are UK based, keeping carbon footprint as low as possible.

Please get in touch if you have any further questions or would like to collaborate.



Why Seaweed Paper?

Seaweed is fast growing, captures carbon and doesn't need water or fertiliser to grow, making it a perfect material for Kelpi Studio's coastal inspired stationery whilst not costing the earth.

Made from 60% seaweed (bi-product from food industry) and 40% recycled paper pulp, this paper is completely natural, 100% biodegradable and fully recyclable.

The seaweed paper features on Kelpi Studio's Journal and Notebook covers for a truly unique product on the market.



STATIONERY

A5 Seaweed Paper Journals

- Cover made from seaweed paper
- 30 blank pages made with recycled paper great for sketching, writing and inks/ watercolour.
- Standard A5 size

IT1 KS1
Abstract Sea



IT1 KS2
Sea Kelp



IT1 KS3
Drifting Seaweed
Green

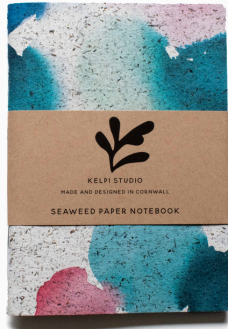


IT1 KS4
Drifting Seaweed
Natural



A6 Lined Seaweed Paper Notebooks

IT2 KS1
Abstract Sea



IT2 KS2
Sea Kelp



IT2 KS3
Drifting Seaweed
Green



IT2 KS4
Abstract Sea
Natural



IT2 KS1
Abstract Sea



IT2 KS1
Abstract Sea



- Cover made from seaweed paper
- 20 lined pages made with recycled paper.
- Standard A6 size
- Saddle Stitched



FROM LAND TO SEA, KELPI
STUDIO'S COLLECTION OF PRINTS
CAN TRANSPORT YOU TO
ANYWHERE IN THE WORLD FROM
YOUR OWN HOME.

Playful Pebble and Seaweed Prints

IT3 KS1 A4/A3
Sea Fan



IT3 KS2 A4/A3
Pebbles Pink



IT3 KS3 A4/A3
Pebbles Mustard



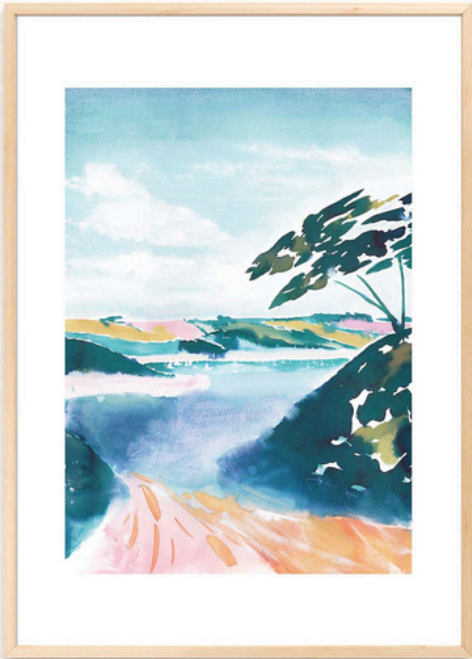
IT3 KS4 A4/A3
Giant Kelp



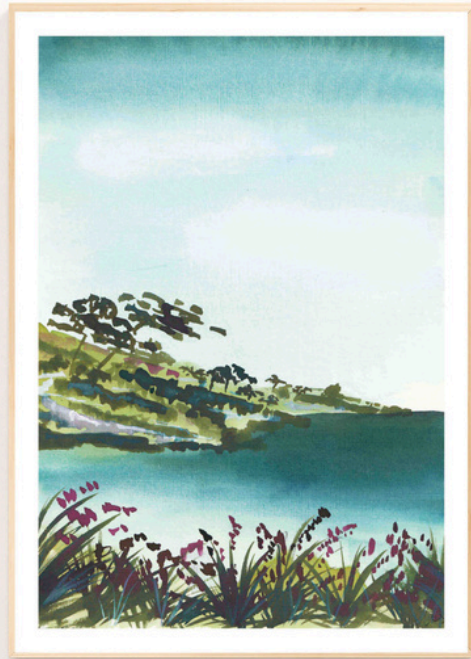
- Printed on recycled paper
- Standard A3 or A4 size
- Frame not included

Cornish Landscapes

IT3 KS5 A4/A3
Frenchman's Creek



IT3 KS6 A4/A3
Helford Passage



IT3 KS7 A4/A3
Rosemullion Head



IT3 KS8 A4/A3
Prussia Cove



- Printed on recycled paper
- Standard A3 or A4 size
- Frame not included

Mountain Landscapes

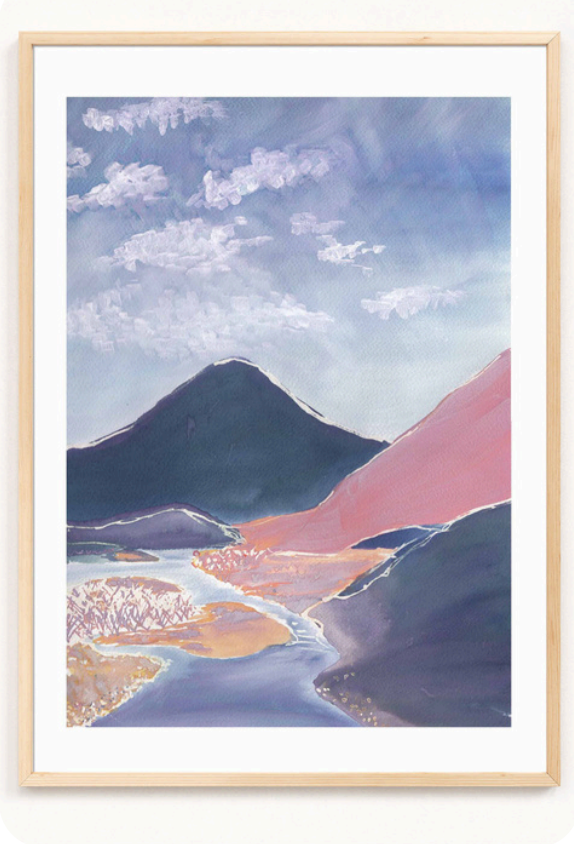
IT3 KS9 A4/A3
Annapurna



IT3 KS10 A4/A3
Distant Himalaya



IT3 KS11 A4/A3
Road To Pokhara



IT3 KS12 A4/A3
Gower at Dawn



- Printed on recycled paper
- Standard A3 or A4 size
- Frame not included

Landscape Prints

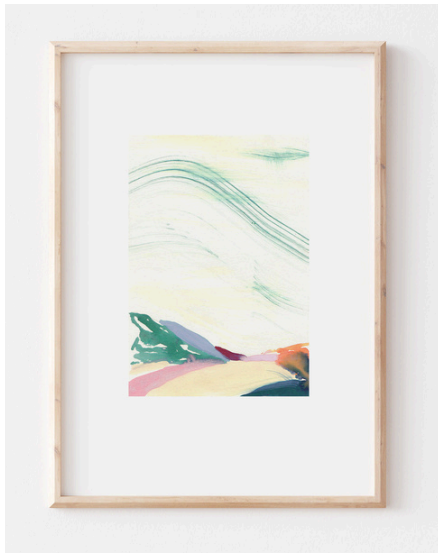
IT3 KS13 A4/A3
Pendennis Point



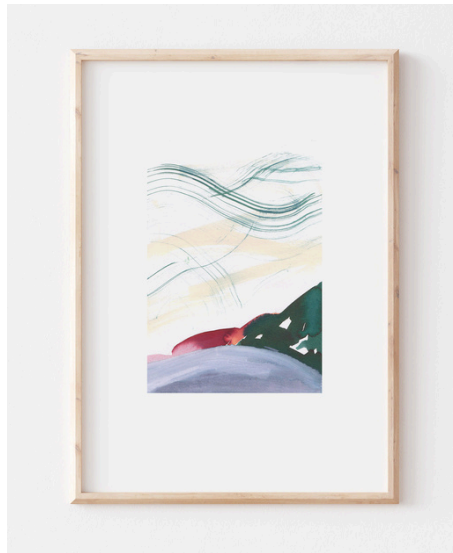
IT3 KS14 A4/A3
Gylly Beach



IT3 KS15 A4/A3
Over the Hills 1



IT3 KS16 A4/A3
Over the Hills 2



IT3 KS17 A4/A3
Over the Hills 3



- Printed on recycled paper
- Standard A3 or A4 size
- Frame not included



JEWELLERY

IT4 KS1

Stacked Hoops L
Recycled Silver



IT4 KS2

Stacked Hoops L
Brass



IT4 KS3

Stacked Hoops L
Brass Silver Combo



IT5 KS1

Stacked Hoops S
Recycled Silver



IT5 KS2

Stacked Hoops S
Brass



IT5 KS3

Stacked Hoops S
Brass Silver Combo





Kelpi Studio's classic and elegant jewellery collection is solely made from brass and recycled silver. Each piece is inspired by natural coastal forms and handmade by Kareni in her studio.

IT6 KS1

Crescent Hoops L
Recycled Silver



IT6 KS2

Crescent Hoops L
Brass



IT7 KS1

Crescent Hoops S
Recycled Silver



IT7 KS2

Crescent Hoops L
Brass





IT8 KS2

Durgan Hoops L
Brass (also available
in recycled silver KS1)



IT9 KS1

Durgan Hoops S
Recycled Silver (also
available in brass KS2)



IT10 KS1
Mini Pebble Studs
Brass



IT11 KS1
Gylly Pebble Hoops L
Recycled Silver Studs



IT12 KS1
Luna Studs
Recycled Silver



IT13 KS1
Hammered Stacking Rings
Recycled Silver



IT13 KS2
Recycled Silver Stacking
Ring with Brass Pebble



IT14 KS1
Luna Necklace
Recycled Silver





IT14 KS2
Luna N/L
Brass



IT15 KS1
Brass Crescent/R Silver
Luna N/L



IT15 KS2
R Silver Crescent/Brass
Luna N/L



IT16 KS1
Moon N/L
Brass



IT16 KS2
Moon N/L
R Silver



IT17 KS1
Stacked Pebbles N/L
R Silver





IT18 KS1

By The Sea Stacking Bangle
Brass



IT18 KS2

By The Sea Stacking Bangle
Recycled Silver



IT18 KS3

By The Sea Stacking Bangle
Silver Brass Combo



IT19 KS1

Organic Cotton
Drawstring Jewellery Pouch





KELPI STUDIO
MADE AND DESIGNED IN CORNWALL