



H2 STUDIO WHOLESALE GUIDE

# Jewellery Product Catalogue

DEDICATE  
CRAFTMANSHIP AND  
STATEMENT OF SELF-  
EMPOWERMENT

# About Us

H2 Studio, founded in 2023, specialises in designing extraordinary tableware and wearable clay art, creating a fantastical realm where oddities and magic come to life. H2 Studio dedicates to crafting quirky and whimsical wonders by porcelain and stoneware. All the products are handmade in the London studio. The surrealist designs reflect the strength, grace, and limitless imagination. Browse the quirky, whimsical ceramic wonders that would transport you to a fantastical kingdom of oddities and magic at H2 Studio. Meticulous craftsmanship, surrealism design, and intricate details define H2 Studio's creations, inviting people to experience everyday moments with a touch of enchantment.

QUIRKY,  
WHIMSICAL  
CERAMIC  
WONDERS WOULD  
TRANSPORT YOU  
TO A FANTASTICAL  
KINGDOM OF  
ODDITIES AND  
MAGIC

Our journey began with a simple kitchen conversation about our shared passion for art and design. From there, we embarked on a mission to create unique and meaningful pieces of jewellery for our clients.

At H2 Studio, we specialise in creating handmade ceramic tableware and jewellery that reflects the unique personality and style of our clients. We believe that every piece of our products should tell a story and evoke emotions. Our focus on the plasticity of clay which allows us to create pieces that are not only visually stunning but also have a deep connection to the user.





GRUMPY BUNNY 14K GOLD PLATED BRASS RING

# Jewellery Collection Guide

**01** *Angry Puss*

**02** *Grumpy Bunny*

**03** *Peach It*

**04** *The Kissing Cup*

**05** *Bow Tie Maniac*

**06** *My Body*





# 01 Angry Puss

The Angry Puss series is a bold and defiant collection that challenges the traditional derogatory uses of the word “puss” in language and culture, where it often connotes female genitalia and disparages traits labeled as weak and cowardly. Our designs feature the unrestrained and fierce expressions of cats, symbolising our rebellious attitude towards the misogyny embedded in coarse language.



ANGRY PUSS PORCELAIN PENDANT FRESHWATER  
PEARL NECKLACE  
Recommend Retail Price: £85-88



ANGRY PUSS PORCELAIN CAT PENDANT BROOCH  
Recommend Retail Price: £60-72



ANGRY PUSS PORCELAIN CAT 14K GOLD PLATED  
BRASS RING  
Recommend Retail Price: £55-58



ANGRY PUSS PORCELAIN PENDANT SILK  
NECKLACE  
Recommend Retail Price: £65-68



001 WHITE



003 PINK



005 PURPLE BLUE



007 MINT



002 RUBY



004 CORAL RED



006 LIGHT MISTY BLUE



008 LIGHT JADE

# Angry Puss Porcelain Pendant Freshwater Pearl Necklace

**SIZE**  
One-size  
Adjustable range  
38.5-45cm

**DEFAULT  
MATERIALS**

Porcelain pendant, 100% freshwater pearl necklace, rhodium-plated/gold-plated brass, steel and silver metal joints, resin glue

**WHOLESALE  
PRICE**

With White(No Bowtie) Cat Pendant: £40  
With Coloured Bowtie Cat Pendant: £42



**DEFAULT MATERIALS** Porcelain pendant, 100% silk, rhodium-plated/gold-plated brass, steel and silver metal joints, resin glue

**WHOLESALE PRICE** With White(No Bowtie) Cat Pendant: £30  
With Coloured Bowtie Cat Pendant: £32



Angry Puss Porcelain Pendant  
Silk Necklace

**SIZE**  
One-size  
Adjustable range  
35-60cm





001 WHITE



003 LIGHT MISTY BLUE



002 PINK



004 PURPLE BLUE

# Angry Puss Porcelain Cat 14K Gold Plated Brass Ring

SIZE  
One-size  
Adjustable ring



COLOUR SCHEME Available to order the same colour scheme as the cat pendant or customise

DEFAULT MATERIALS Porcelain ringstone, 14K gold-plated brass, resin glue

WHOLESALE PRICE With White(No Bowtie) Cat: £25  
With Coloured Bowtie Cat: £27



# Angry Puss Porcelain Cat Pendant Brooch

**SIZE**  
One-size  
Adjustable range  
45-50cm



<b>COLOUR SCHEME</b>	Available to customise
<b>DEFAULT MATERIALS</b>	Brooch pendent: porcelain, 14K gold-plated brass, resin glue Necklace chain : polyester, zirconi/artificial pearl gold-plated steel chain
<b>WHOLESALE PRICE</b>	Pendant Brooch: £30 With Necklace Chain: £36





# Grumpy Bunny

Grumpy Bunny is a unique character that captures the silent anger and frustration, especially among women whose feelings are frequently dismissed or minimised. In nature, when rabbits are angry, they point their ears forward—a subtle sign that’s easy to neglect. The Grumpy Bunny features this distinctive ear position, symbolising women’s quiet expressions of anger that are typically ignored everyday. It is a metaphor of our silent struggles against being underestimated or ignored, offering a voice and visibility to those whose feelings are too often pushed aside.



GRUMPY BUNNY PORCELAIN PENDANT  
FRESHWATER PEARL NECKLACE  
Recommend Retail Price: £85-88



GRUMPY BUNNY PORCELAIN CAT PENDANT BROOCH  
Recommend Retail Price: £60-72



GRUMPY BUNNY PORCELAIN CAT 14K GOLD  
PLATED BRASS RING  
Recommend Retail Price: £55-58



GRUMPY BUNNY PORCELAIN PENDANT  
SILK NECKLACE  
Recommend Retail Price: £65-68



001 WHITE



003 PINK



005 PURPLE BLUE



007 MINT



002 RUBY



004 CORAL RED



006 LIGHT MISTY BLUE



008 LIGHT JADE

Grumpy Bunny Porcelain Pendant  
Freshwater Pearl Necklace

SIZE  
One-size  
Adjustable range  
38.5-45cm

DEFAULT  
MATERIALS

Porcelain pendant, 100% freshwater pearl necklace, rhodium-plated/gold-plated brass, steel and silver metal joints, resin glue

WHOLESALE  
PRICE

With White(No Bowtie) Rabbit Pendant: £40  
With Coloured Bowtie Rabbit Pendant: £42





001 BABY PINK



003 NUDE PINK



005 RUBY RED



002 PUERPLE BLUE



004 BABY BLUE

COLOUR SCHEME	Available to order the same colour scheme as the Angry Puss Series
DEFAULT MATERIALS	Porcelain pendant, 100% silk, rhodium-plated/gold-plated brass, steel and silver metal joints, resin glue
WHOLESALE PRICE	With White(No Bowtie) Rabbit Pendant: £30 With Coloured Bowtie Rabbit Pendant: £32



# Grumpy Bunny Porcelain Pendant Silk Necklace

SIZE  
One-size  
Adjustable range  
35-60cm





001 WHITE



003 LIGHT MISTY BLUE



005 RUBY RED



002 PINK



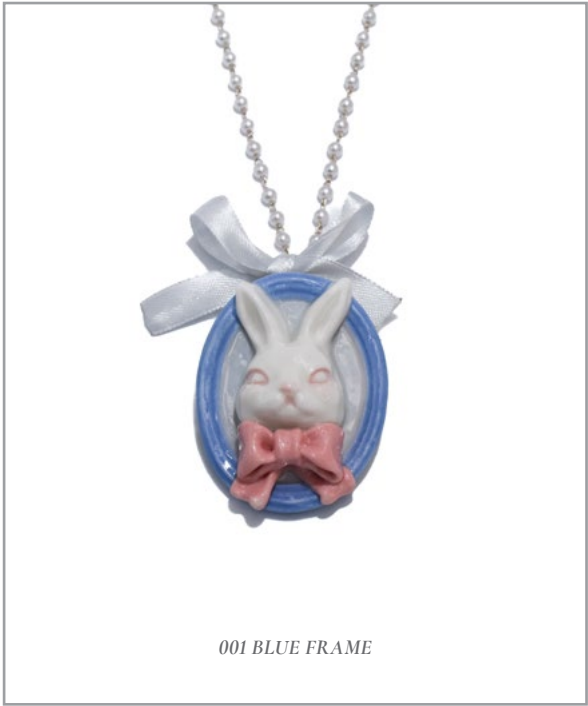
004 PURPLE BLUE

# Grumpy Bunny Porcelain Cat 14K Gold Plated Brass Ring

SIZE  
One-size  
Adjustable ring



COLOUR SCHEME	Available to order the same colour scheme as the pendant or customise
DEFAULT MATERIALS	Porcelain ringstone, 14K gold-plated brass, resin glue
WHOLESALE PRICE	With White(No Bowtie) Ringwtone: £25 With Coloured Bowtie Ringstone: £27



001 BLUE FRAME



002 PINK FRAME

# Grumpy Bunny Porcelain Cat Pendant Brooch

**SIZE**  
One-size  
Adjustable range  
45-50cm



<b>COLOUR SCHEME</b>	Available to customise
<b>DEFAULT MATERIALS</b>	Brooch pendent: porcelain, 14K gold-plated brass, resin glue Necklace chain : polyester, zirconi/artificial pearl gold-plated steel chain
<b>WHOLESALE PRICE</b>	Pendant Brooch: £30 With Necklace Chain: £36





# 03 Peach It

The Peach It Series offers a surrealistic exploration of form and space, uniquely presenting both the exterior and interior of peaches within a single artistic expression. This ceramic collection features intricately designed tableware and jewellery that plays with perception, inviting the viewer to engage with the everyday object in a novel and thought-provoking way. The series captures the lush, vibrant essence of peaches, rendered in a surreal style. Each piece challenges the boundaries between external appearance and internal essence.



PEACH IT DOUBLE SIDED PENDENT FRESHWATER PEARL NECKLACE CHOKER  
Recommend Retail Price: £84



PEACH IT SURREAL NON-SYMMETRICAL PEACH AND LEAVES EARRINGS  
Recommend Retail Price: £45



PEACH IT NON-SYMMETRICAL PORCELAIN SILVER EARRINGS  
Recommend Retail Price: £40



PEACH IT DOUBLE SIDED SILK NECKLACE  
Recommend Retail Price: £6





Peach It Double Sided Pendant  
Freshwater Pearl Necklace  
Choker

*SIZE*  
One-size  
Adjustable range  
38.5-45cm

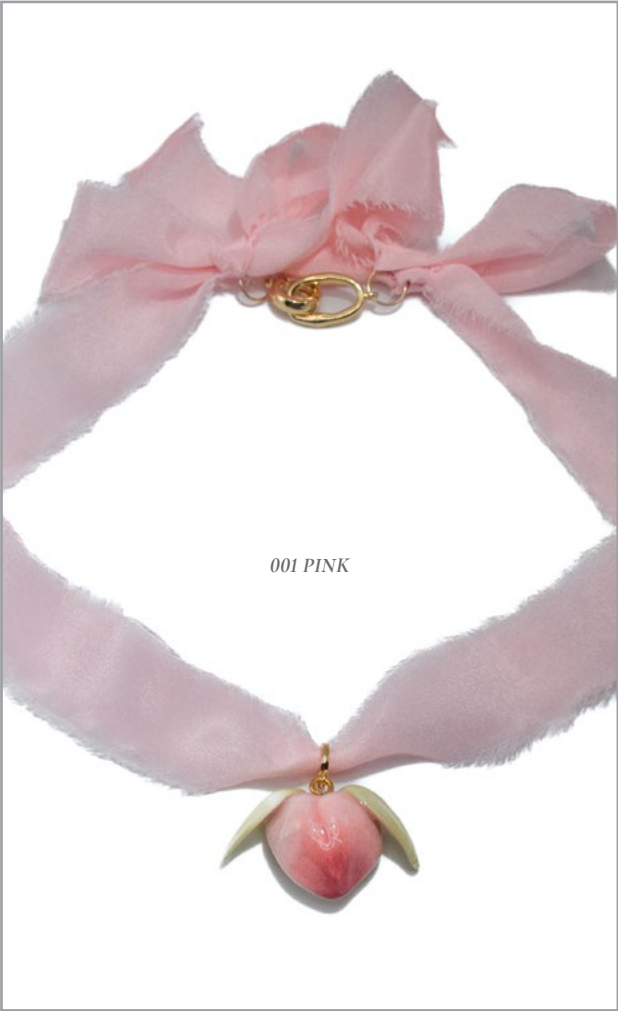
*DEFAULT  
MATERIALS*

Porcelain pendant, 100% freshwater pearl necklace, gold-plated brass, steel and silver metal joints, resin glue

*WHOLESALE  
PRICE*

Pendant only: £20  
Necklace: £40





<b>DEFAULT MATERIALS</b>	Porcelain pendant, 100% silk, rhodium-plated/gold-plated brass, steel and silver metal joints, resin glue
<b>WHOLESALE PRICE</b>	Silk/Silk Velvet Choker: £30

Peach It Double Sided Silk  
Necklace

**SIZE**  
One-size  
Adjustable range  
35-60cm



Peach It Non-Symmetrical  
Porcelain Silver Earrings

SIZE  
One-size

DEFAULT MATERIALS  
Porcelain pendant, 925 silver pieces, rhodium-plated/gold-plated copper block, resin glue

WHOLESALE PRICE  
Leaf peach: £20  
Just Peach £18





# 04 The Kissing Cup

The Kissing Cup series is a practice to create a theatrical place through the using of the cup. When the user puts drinks into the cup, the nose inside will be drowned. It will be "saved" from drowning when the user finishes drinking from the cup. The emotion we try to convey is by emulating the feeling of kissing, which is what happens when you directly drink from the cup, whilst simultaneously convey the message that gaslighting and emotional manipulation may look like the expression of love, but it is still dangerous and sometimes invisible in a relationship.



THE CUP THEATER MINI PORCELAIN CUP & PLATE  
CRYSTAL PEARL NECKLACE

Recommend Retail Price: £98-128  
according to the pearl materials



THE KISSING CUP MINI PLATE  
SPINNING RING

Recommend Retail Price: £50



THE KISSING CUP SPINNING MINI  
PORCELAIN CUP RING

Recommend Retail Price: £60



3MM SHELL BEAD



4MM CRYSTAL PEARL



5MM CRYSTAL PEARL



5-6MM FRESHWATER PEARL

# The Cup Theater Mini Porcelain Cup & Plate Necklace

**SIZE**  
S: length 40.0cm  
M: length 42.5cm  
L: length 45.0cm



<b>COLOUR SCHEME</b>	Available to customise metal colour and materials, or order just the cup/plate
<b>DEFAULT MATERIALS</b>	Porcelain pendant, 100% freshwater pearl/crystal pearl/shell bead necklace, gold-plated/ rhodium-plated brass, steel joints
<b>WHOLESALE PRICE</b>	5-6mm Freshwater Pearl Chain: £62 5mm Crystal Pearl Chain: £52 4mm Crystal Pearls Chain: £50 3mm Shell Bead Chain: £48



The Cup Theater Mini Porcelain  
Cup & Plate Spining Ring

SIZE  
One-size  
Adjustable ring



COLOUR SCHEME	Available to customise metal colour and materials
DEFAULT MATERIALS	Porcelain ringstone, 14K gold-plated brass ring, brass bearing, resin glue
WHOLESALE PRICE	Cup Ring: £28 Plate Ring: £20





# Bowtie Maniac

The Bowtie Maniac Jewelry Series reimagines the classic bowtie as a symbol of elegance and whimsy in wearable art. This series features necklaces with delicate ceramic bowtie pendants, gracefully paired with lustrous pearls to enhance their sophisticated charm. Each piece is crafted to express playfulness while maintaining an air of refined grace, making them perfect for both casual and formal occasions.

*BOWTIE MANIAC LARGE CERAMIC BOWTIE  
ROUND FRESHWATER PEARL NECKLACE*  
Recommend Retail Price: £90

*BOWTIE MANIAC MINI  
BOWTIE SILVER EARRINGS*  
Recommend Retail Price: £35

*BOWTIE MANIAC MEDIUM RIBBON BOWTIE  
FRESHWATER PEARL NECKLACES*  
Recommend Retail Price: £85

*BOWTIE MANIAC LARGE CERAMIC BOWTIE  
GOLD PLATED BRASS RING*  
Recommend Retail Price: £58

*BOWTIE MANIAC LARGE RIBBON BOWTIE ROUND  
FRESHWATER PEARL NECKLACES*  
Recommend Retail Price: £95

*BOWTIE MANIAC SMALL RIBBON CERAMIC  
BOWTIE GOLD PLATED BRASS RING*  
Recommend Retail Price: £54

*BOWTIE MANIAC MINI  
BOWTIE GOLD PLATED BRASS RING*  
Recommend Retail Price: £20



COLOUR SCHEME	Available to customise metal and bowtie colour, check appendix or contact us for more information
DEFAULT MATERIALS	Porcelain pendant, 100% freshwater pearls, gold-plated/ rhodium-plated brass, 925 silver and steel joints
WHOLESALE PRICE	A Bowtie Pendent With Round/Rice Freshwater Pearl Chain: £40



Bowtie Maniac Medium Ribbon  
Bowtie Freshwater Pearl Necklaces

SIZE  
One-size  
Adjustable range  
38.5-45cm





5-6MM FRESHWATER PEARL

Bowtie Maniac Large Bowtie  
Round Freshwater Pearl Necklaces

SIZE  
One-size  
Adjustable range  
38.5-45cm



COLOUR  
SCHEME Available to customise metal and bowtie colour, check  
appendix or contact us for more information

DEFAULT  
MATERIALS Porcelain pendant, 100% freshwater pearls, gold-plated/ rhodium-  
plated brass, 925 silver and steel joints

WHOLESALE  
PRICE 5-6mm Freshwater Pearl Chain: £42





5-6MM FRESHWATER PEARL

Bowtie Maniac Large Ribbon  
Bowtie Round Freshwater Pearl  
Necklaces

**SIZE**  
S: length 40.0cm  
M: length 42.5cm  
L: length 45.0cm



**COLOUR  
SCHEME** Available to customise metal and bowtie colour

**DEFAULT  
MATERIALS** Porcelain white stoneware pendant, 100% freshwater pearls,  
gold-plated/ rhodium-plated brass and steel joints

**WHOLESALE  
PRICE** 5-6mm Freshwater Pearl Chain: £45  
5mm Crystal Pearl Chain: £40



001 WHITE



003 ROSE ROCK



005 BLUE HEAVEN



006 ISLAND RED



002 BLACK



004 LILAC ROCK

Bowtie Maniac Small Ribbon  
Ceramic Bowtie Gold Plated  
Brass Ring

SIZE  
One-size  
Adjustable ring

COLOUR SCHEME	Available to customise metal and bowtie colour, check appendix or contact us for more infomation
DEFAULT MATERIALS	Porcelain ringstone, 14K gold-plated brass, resin glue
WHOLESALE PRICE	Stoneware Ringwtone: £24





001 WHITE



002 BLUE ROCK



003 ROSE ROCK

Bowtie Maniac Large  
Ceramic Bowtie Gold  
Plated Brass Ring

SIZE  
One-size  
Adjustable ring



COLOUR SCHEME	Available to customise metal and bowtie colour, check appendix or contact us for more information
DEFAULT MATERIALS	Porcelain ringstone, 14K gold-plated brass, resin glue
WHOLESALE PRICE	Stoneware Ringwtone: £26





# Bowtie Maniac Mini Bowtie Gold Plated Brass Ring

SIZE  
One-size

COLOUR SCHEME	Available to customise metal and bowtie colour, check appendix or contact us for more infomation
DEFAULT MATERIALS	Porcelain pendant, 925 silver pieces, rhodium-plated/gold-plated copper block, resin glue
WHOLESALE PRICE	Box Package: £9 No Package £7



# Bowtie Maniac Mini Bowtie Earrings

SIZE  
One-size

COLOUR SCHEME	Available to customise metal and bowtie colour, check appendix or contact us for more information
DEFAULT MATERIALS	Porcelain pendant, 925 silver pieces, rhodium-plated/gold-plated copper block, resin glue
WHOLESALE PRICE	Box Package: £15 Card Package £13



# 06 My Body

The My Body Series Jewellery celebrates the sacredness of the human body and its life-creating power. This collection of wearable art is crafted to honour our physical forms as temples of creativity and existence. Each piece mirrors the contours and textures of human anatomy, serving as a reminder of our body's beauty and strength. This series promotes self-love and body positivity, encouraging wearers to connect deeply with their own physical essence. Embrace the unique story of your body with jewellery that is as distinct as you are.



MY BODY EYE WITH LIP CHOKER NECKLACE SET

Recommend Retail Price: £88



MY BODY EYE WITH LIP CHOKER NECKLACE

Recommend Retail Price: £70



MY BODY FREE CUSTOMISABLE PORCELAIN JEWELLERY

Recommend Retail Price: £20-65 according to the material





001 GLOSSY BLUE PINK



003 GLOSSY BLUE GREEN



002 MATTE BLUE PINK



CHOKER NECKLACE SET

# My Body Eye With Lip Choker Necklace Set

SIZE  
One-size  
Choker Adjustable  
range 37-42cm



COLOUR SCHEME	Available to customise metal colour and materials
DEFAULT MATERIALS	Porcelain pendant, gold-plated/ rhodium-plated brass, steel joints
WHOLESALE PRICE	Choker: £30 Set: £39



My body Customisable  
Porcelain Jewellery

**SIZE**  
Default Necklace length: 40-45cm  
Earing/Ring/Pendant: one size



<b>COLOUR SCHEME</b>	Available to customise the jewellery style, metal and glaze colour
<b>DEFAULT MATERIALS</b>	Porcelain white stoneware pendant, 100% freshwater pearls, gold-plated/ rhodium-plated brass and steel joints
<b>WHOLESALE PRICE</b>	Freshwater Pearl Necklace: £30 Crystal Pearl Necklace: £25 Shell Bead Necklace: £18 Metal Chain Necklace Pendant Detachable: £12 Metal Chain Necklace: £10 One Piece Earrings: £15 Detachable Pendant: £9 Ring: £8



The freshwater pearl is a kind of organic jewellery material. The pearls we normally get are not flawless. Please note that freshwater pearls are not perfectly uniform in shape and may naturally feature slight growth lines and small blemishes. These characteristics are a testament to their organic origin and unique beauty, making each piece truly one of a kind. Natural aging and yellowing may occur over time.

Contact us if you wish to find pearls in different colour, shape or finer quality.



5-6MM RICE SHAPE



6-7MM RICE SHAPE



5-6MM ROUND POTATO

# Default Pearl Types



# Coloured Clay

Mix the colourful stain with porcelain white clay  
The colour effects depends on the ratio



# Underglaze

Underglaze on porcelain white clay  
Final effects depend on the base clay colour  
Contact us for more available colour



# 07 Appendix 02

COLOUR SCHEME REFERENCE

Contact us if you wish to customise any product

# Glaze

Glaze on porcelain white clay  
Final effects depend on the base clay colour



GN01 TRANSPARENT



GS02 PINK DOT



GN03 PEARL PINK



MS04 ROSE ROCK



GN05 RUBY



GN06 POMEGRANATE



GN07 ISLAND RED



MS08 DESERT YELLOW



GN09 LIGHT YELLOW



MN10 MATTE CELADON



GN11 CELADON GREEN



GN12 SEA GREEN



GN13 BLUE HEAVEN



GN14 AQUA



MS15 BLUE ROCK



MS16 LILAC ROCK



MS17 CONCRETE GREY



MN18 GOLDEN BLACK



GN19 BLACK

- GN SERIES

Glossy glaze, final effect unlikely to change in different firing
- MN SERIES

Matte glaze, final effect unlikely to change in different firing
- GS SERIES

Glossy glaze, final effect is different on each pieces
- MS SERIES

Matte glaze, final effect might change in different firing

Our porcelain jewellery is order to make product. Please leave us at least 28 business days to deliver your order.

Minimum wholesale order price is £250.

All jewellery products are available to upgrade to 925 silver version. Let us know if you have any enquiries or book a studio tour.

**WEBSITE**    <https://h2studio.shop>

**EMAIL**        [info@h2studio.shop](mailto:info@h2studio.shop)  
                     [h2studiolondon@hotmail.com](mailto:h2studiolondon@hotmail.com)

**INSTA**         @h2\_studio\_art

**PHONE**        +44 7733137903

**ADDRESS**    H2 Studio Ltd, In Production, Unit 14, 8 Argall Avenue, London, E10 7QE, United Kingdom

# Get in Touch

WWW.H2STUDIO.SHOP

