









*As inspired by the classic 'English' look as we are by our extensive travels across India and Africa, Samarkand Design brings together a vibrant, eclectic mix of our favourite things. From handmade lampshades, beautiful and eccentric lamp bases, to contemporary handmade crewel cushions in bold and bright colours. We preserve and celebrate artisanal craftsmanship through distinctive and inspiring lighting and textiles with sustainability in mind.*



### **The 'Repeatable' Lampshades**

The Jaipur (silk), Bagru, Assam (cotton) and Scallop (linen) collections make up our 'repeatable ranges'. They are all made from fabrics which are bespoke to us and can be ordered and re-ordered in any of our standard sizes.

### **The Lighting Collection**

We have worked closely with some talented artisans to create a range of table lamps and wall lights that are unique to us. Although they have been designed specifically to compliment our lampshade ranges, they are versatile enough to work with most shades.

### **The Cushion Collection**

These handmade works of art are created using the ancient craft of crewel embroidery. They are available in 48cm x 30cm rectangular cushions or 45cm x 45cm square cushions.

### **Lampshade Sizes, Fixtures & Fittings**

All of the repeatable lampshades can be made in sizes starting from 15cm and 18cm, then in 5cm increments from 25cm up to 50cm. The type of fitting will depend on the size ordered; the small 15cm lampshades come with clip on fittings designed to attach straight onto a candle bulb, 18cm shades can either have a clip on fitting or a pendant fitting. 25cm and 30cm lampshades are made with a fixed shade carrier and anything larger come with a duplex fitting which can be fitted with a 'spider' for ceiling lights or a shade carrier for lamps. All shade carriers are designed to fit onto a bulb holder. The ring is made to fit 42mm (ES) bulb carrier and comes with a removable filler which allows fitting to 28mm (BC) or 20mm (SES) holders.

### **Vintage Sari and Bespoke Lampshades**

Our vintage sari lampshades represent a beautiful collection of one-of-a-kind statement pieces which are handmade from repurposed Indian silk saris. Shop the extensive range on our website [www.samarkanddesign.com](http://www.samarkanddesign.com). Alternatively, if you are looking for a truly bespoke service. We have a beautiful selection of vintage sari's waiting to become your perfect lampshade. Contact us with your colour or pattern choices and we will help make your vision become reality. [info@samarkanddesign.com](mailto:info@samarkanddesign.com)



# The Jaipur Collection

Handmade silk lampshades in designs inspired by our favourite vintage silk saris



Green Trellis SKU 2201



Noughts & Crosses SKU 2202



Red Chevron SKU 2202



Orange Tadpole SKU 2204



Shibori Alleppey SKU 2205



Teal Bangla SKU 2206



Yellow Wave SKU 2207



Black & Blue SKU 2208



Khaki Peacock SKU 2225



Cream & Yellow Paisley SKU 2309

# The Bagru Collection

Hand block printed cotton lampshades



Grey Bangla SKU 2217



Cherry Bangla SKU 2218



Green Chevron SKU 2219



Teal Floral SKU 2220



Indigo Brick SKU 2221



Indigo Mandrem SKU 2222



Pink and Ochre SKU 2223



Yellow Yoyo SKU 2224



Red Kalamkari SKU 2320



Union Kalamkari SKU 2321



# Assam and Scallop Collection

Scallop lampshades made from linen, edged with striking accent colours

Assam lampshades made from cotton hand woven in North East India.



Lime Green Scallop SKU 2209



Red Scallop SKU 2210



Blue Scallop SKU 2211



Pink Scallop SKU 2212



Assam Blue SKU 2214S



Assam Green SKU 2215S



Assam Pink SKU 2216S



Assam Blue SKU 2214L



Assam Green SKU 2215L



Assam Pink SKU 2216L

# Lighting Collection

Table lamps and wall light fittings unique to Samarkand Design, created by artisans to compliment our lampshade ranges



Manali Table Lamp  
SKU LB2118



Adita Tree Table Lamp  
SKU LB2120



Patala Candlestick  
SKU LB2119



Aakriti Table Lamp  
SKU LB04



Iki Spot Table Lamp  
SKU LBIK01



Livia Wall Light  
SKU LB2213



Maia Desk Lamp  
SKU LB2212



Bibha Wall Light  
SKU LB2121



# The Cushion Collection

Hand stitched cushions using the ancient craft of crewel embroidery



Tomato Red Rectangle  
SKU 2109



Tomato Red Square  
SKU 2109



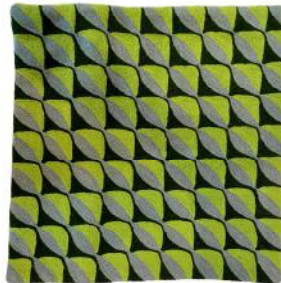
Pink & Orange Square  
SKU CU124



Soft Pink Rectangle  
SKU 2111



Green & Blue Rectangle  
SKU 2113



Green & Blue Square  
SKU 2112



Blue & Ochre Square  
SKU 2214



Blue & Ochre Rectangle  
SKU 2215









WWW.SAMARKANDDESIGN.COM  
INFO@SAMARKANDDESIGN.COM

HIGHER QUEEN DART,  
RACKENFORD, DEVON  
EX16 8EA

+44 (0)7973 922943

