



R I Z E

L O N D O N

ESTABLISHED IN 2022



FOR LOVERS OF LIFE IN ITS MANY COLOURS
ART THAT TOUCHES ALL THE SENSES

RIZE IS A JOURNEY OF THE SENSES AND A CELEBRATION
OF CULTURE, COLOUR & CRAFTSMANSHIP.

OUR AIM IS TO PLACE ART AS PART OF OUR EVERYDAY
SURROUNDINGS IN ORDER TO MAKE THEM INDULGENT,
ALIVE AND PLAYFUL, WHILST RETAINING OUR PASSION
FOR PRESERVING HERITAGE AND TRADITIONAL CRAFTS.





FOUNDED BY RIMA AND ZAINA WHO CAME TOGETHER TO CREATE A NEW RELATIONSHIP BETWEEN **ART AND INTERIORS**.

RIMA IS A SUCCESSFUL INTERIOR DESIGNER WHOSE ELEGANT AND TRADITIONAL STYLE HAS BEEN CALLED UPON TO DESIGN MANY OF LONDON'S FINEST HOMES. RECENTLY SHE FELT A DESIRE TO EXPLORE THE MERGING OF CONTEMPORARY ART WITH TRADITIONAL OBJECTS OF THE HOME.

ZAINA IS A CONTEMPORARY ARTIST WHO HAS TRAINED WITH A VARIETY OF ARTISANS OVER THE YEARS, DEVOTING HERSELF TO LEARNING AGE-OLD ARTISTIC TECHNIQUES, AS WELL AS MAINTAINING HER OWN BOLD, FREE-SPIRITED APPROACH TO PAINTING.



RIZE WILL MAKE ITS INTRODUCTION TO THE WORLD
THROUGH ITS FIRST LINE OF LUXURY CANDLES.
SIX UNIQUE DESIGNS, SIX BESPOKE SCENTS.

THIS WILL BE FOLLOWED BY A WIDE RANGE OF CUSHIONS
AND WALLPAPER TO EXCITE, DELIGHT AND SURPRISE ITS
AUDIENCE.



OUR CAREFULLY SELECTED COLLABORATIONS WITH
VARIOUS LOCAL CREATORS OF ART ENSURE WE RETAIN
OUR PASSION FOR **PRESERVING HERITAGE** AND
TRADITIONAL CRAFTS, FROM PASSEMENTIERS TO
CERAMICISTS.

THE PROCESS OF MAKING INVOLVES **SILK SCREEN**
PRINTING APPLIED AND FINISHED BY HAND AND **GOLD**
EDGING APPLIED BY BRUSH, ALL CRAFTED BY ARTISANS
IN THE UK.



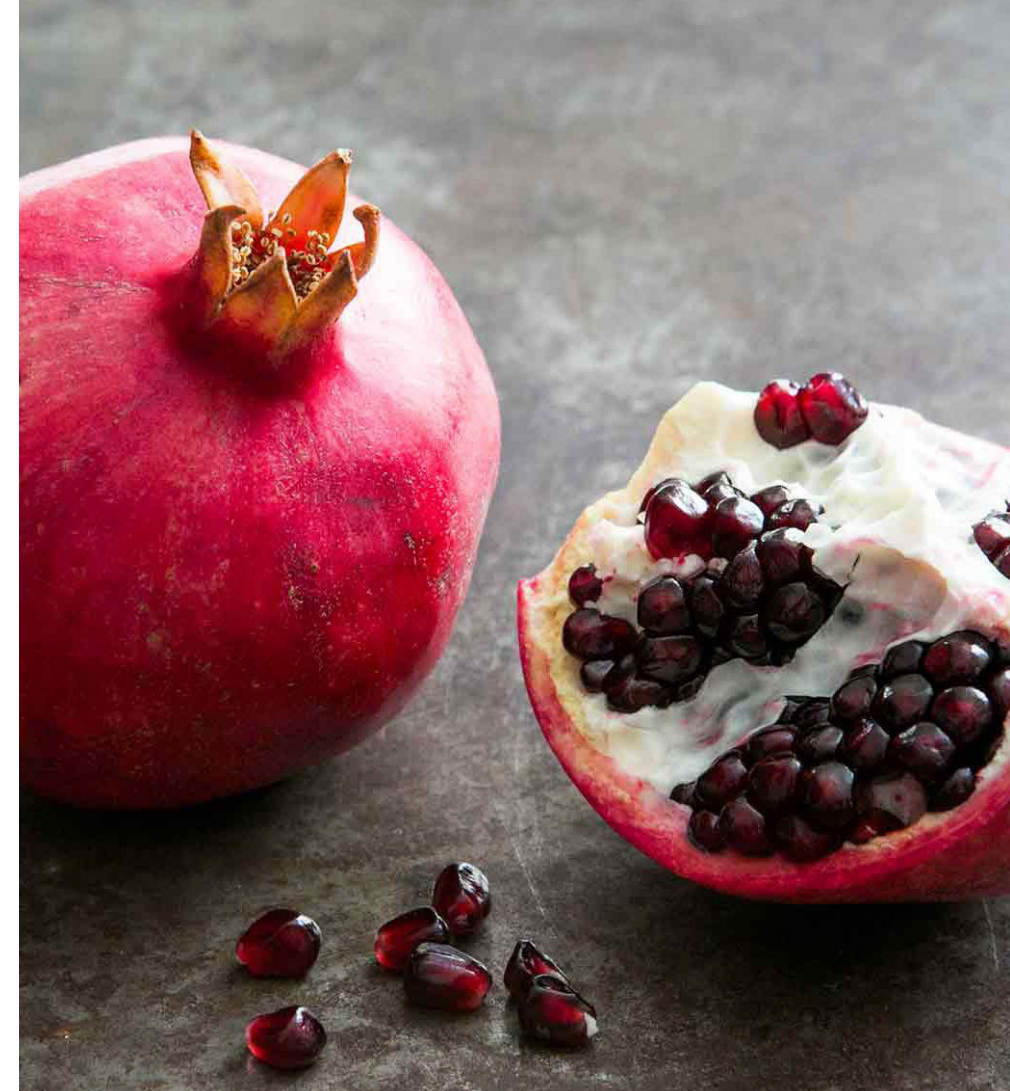






OUR **BESPOKE SCENTS** WERE INSPIRED BY THE
MULTITUDE OF LAYERS THAT EXIST WITHIN A DEEP-
ROOTED AND VISIONARY SPIRIT AND OUR MIDDLE-EAST-
MEETS-WEST QUALITY IS APPARENT THROUGHTOUT OUR
STORY.

RIZE IS AN EXPRESSION OF PASSION, A TREASURING OF
CULTURE AND A CELEBRATION OF FEMININITY.







BEDAZZLING

100% NATURAL, HAND-POURED
AND SCENTED WITH AMBER,
FRANKINCENSE, TUBEROSE AND
YLANG



DANCING IN THE DARK

OUR SIGNATURE
100% NATURAL, HAND-POURED
AND SCENTED WITH BLACK SUEDE,
SAFFRON, RASPBERRY AND NIGHT
BLOOMING JASMINE



BLUE ME AWAY

100% NATURAL, HAND-POURED
AND SCENTED WITH MINT LEAF,
CEDARWOOD, HONEY AND AMBER



ILLUMINATED

100% NATURAL, HAND-POURED
AND SCENTED WITH AMBER, WHITE
MUSK, CEDAR AND VIOLET LEAF



DREAM AWAKENING

100% NATURAL, HAND-POURED
AND SCENTED WITH OUDH,
CITRUS, AMBER AND BERGAMOT



RIZE N SHINE

100% NATURAL, HAND-POURED
AND SCENTED WITH VANILLA,
TONKA, WHITE MUSK AND ROSE



OUR **CANDLES** CAN BE PURCHASED WITH ADDITIONAL GIFT WRAPPING, EACH ONE CONSISTING OF A REUSABLE SCARF MADE OF **RECYCLED PLASTIC**, UNIQUE TO THE DESIGN OF THE SPECIFIC CANDLE




RIZE
LONDON

Blue Me Away

100% NATURAL
300 g


RIZE
LONDON

Illuminated

100% NATURAL
300 g



RIZE
LONDON



OUR LUXURY **CUSHIONS** ARE CRAFTED IN BRITAIN USING RICH, PATTERNED VELVET AND LINEN. EACH CUSHION WILL BRING LIFE AND VIBRANCY TO YOUR HOME, AND TURN YOUR SOFA INTO THE ULTIMATE CENTREPIECE.

FILLED WITH A PLUMP 100% FRENCH FEATHER, OUR CUSHIONS HAVE HAD THEIR INDIVIDUAL DESIGNS CAREFULLY PICKED OUT BY OUR TEAM. EVERY FIBRE, THREAD, COLOUR AND DETAIL IS CHOSEN WITH PURPOSE. THESE AREN'T JUST CUSHIONS, BUT **PIECES OF ART** WHICH WILL ELEVATE YOUR HOME, AND LIFE.

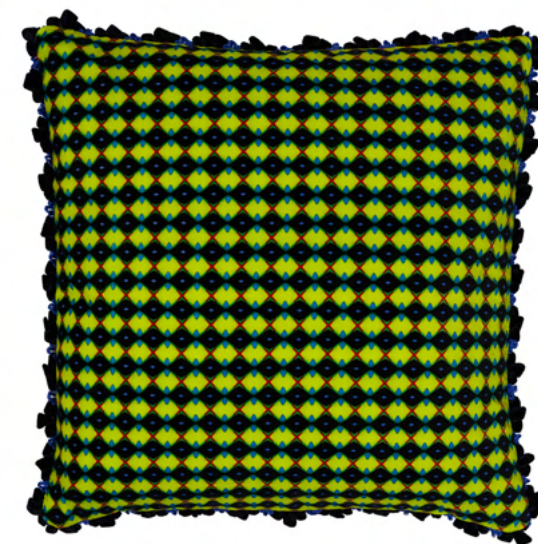
FALL IN LOVE WITH OUR UNIQUE TRIMMINGS: **HANDMADE** BY BRITISH PASSEMENTERISTS AND EXCLUSIVELY CREATED TO MATCH THE INDIVIDUAL CUSHIONS THEY ADORN. THESE DISTINCTIVE DESIGNS BREATHE LIFE AND LUXE INTO EVERY HOME WITH THEIR EYE-CATCHING COLOUR PALETTE, ELEVATING AND ENHANCING ANY INTERIOR THEY ARE PLACED IN.



SPIDERWEB



LIQUORICE



BEEHIVE



FLAMINGO



DRAGONFLY



NIGHT OWL



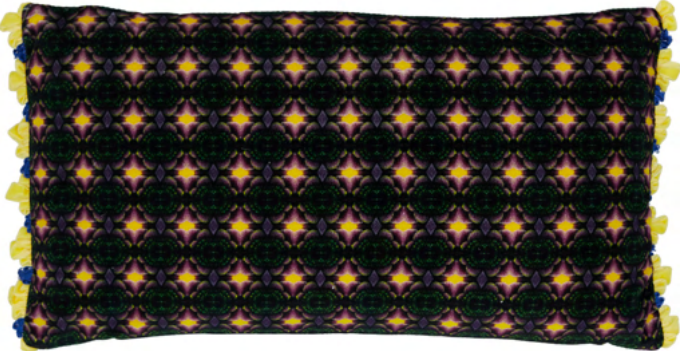
SUNRISE



TWINKLE OBLONG



SAHARA OBLONG



PALM TREE OBLONG

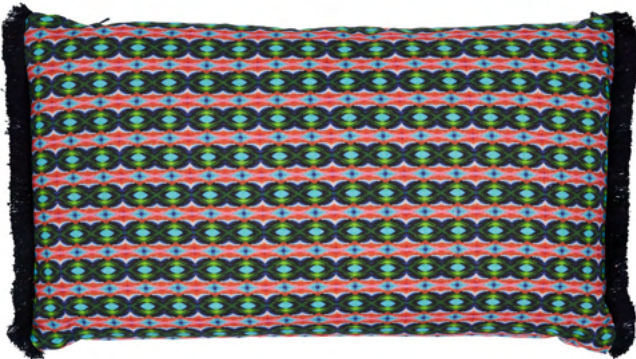
DRAGON OBLONG



SPRIDERWEB OBLONG



MIST OBLONG

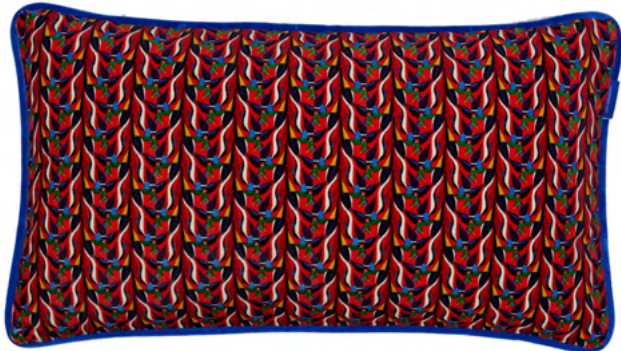


LIQUORICE OBLONG

BEEHIVE OBLONG



NIGHT OWL OBLONG

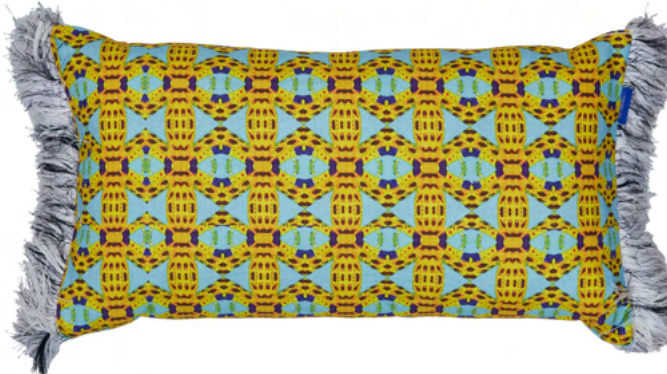


FLAMINGO OBLONG



DRAGONFLY OBLONG

SUNRISE OBLONG





WE LOOK FORWARD TO BEING A PART OF YOUR HOME

[RIZELONDON.COM](https://www.rizelondon.com)

 RIZELONDON