

New Season 2025

THE PATTERN BOOK

Vintage-style greeting cards,
notecards, posters and gift wrap.
Printed in England.



Free shipping on wholesale orders.*

100% recycled Italian paper.

Shop our whole range at:

Shop on Faire

Shop at
The Pattern Book

www.thepatternbook.co.uk
hello@thepatternbook.co.uk
+44 (0)207 274 0042

*With a minimum order value of £150

➔ New Releases

Greeting cards

170mm x 120mm/approx. 7" x 5"



Bee-Keeping

PB2510

Adapted from
*The British
Encyclopedia
Illustrated*
(1933).



Keys

PB2511

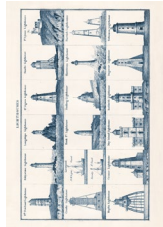
Adapted and
translated
from *Larousse
du XXème
siècle* (1932).



Anatomy of a
Bird

PB2501

Adapted from
*Dictionnaire
Pittoresque
d'Histoire
Naturelle* (1838).



Lighthouses

PB2512

Adapted from
*The Seaman's
New Guide and
Coaster's Com-
panion* (1857).



Hero

PB2513

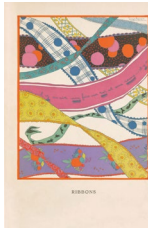
Adapted from
'The Romance
of Nature'
(1836).



Wren Nest

PB2507

Adapted from
*The Natural
History of the
Nest and Eggs
of British Birds*
(1875)



Ribbons

PB2504

Adapted from
*La Gazette du
Bon Ton* (1913).



Sympathy

PB2502

Adapted from
the Japanese
publication:
Shin-bijutsukai
(1902).



Woodland
Areas

PB2509

Adapted from
an 1886
Ordnance
Survey sheet.



Cheese

PB2506

Adapted from
*Mrs. Beeton's
Book of
Household
Management*
(1907 edition).



Parts of a
Butterfly

PB2508

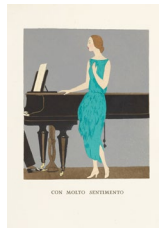
Adapted from
*The Aurelian or
Natural History of
English
Insects* (1766).



Gestures and
Their Meanings

PB2503

Adapted
illustration
c.1910.



Con Molto
Sentimento

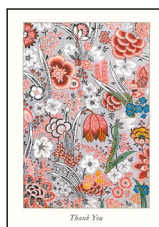
PB2505

Adapted from
*La Gazette du
Bon Ton* (1921).

➔ Notecards

Shop-ready packs of 6

125mm x 90mm/approx. 5" x 3.5"



Oberkampff
Thank You

NC2501

Adapted from
a design by
Oberkampff
& Cie.
(1759-1815).



Rocky Mountain
Flowers

NC2502

Adapted from
*Flowers of
Mountain and
Plain* (1920).



Complementary Colours

NC2503

Adapted from
Harmony in Dress (1928).



Senshokuhō Flower

NC2508

Adapted from
the Japanese
book *Dyeing
Method* (1887).



Matchbox Sunflower

NC2513

Adapted from
a vintage
Indian
matchbox.



Chō Senshu Butterflies 1

NC2504

Double-sided
thank you card.
Adapted from
Chō Senshu
(1904).



Floral Pattern

NC2509

Adapted from
a printed
textile
c.1800–1818.



Chō Senshu Butterflies 2

NC2505

Double-sided
thank you card.
Adapted from
Chō Senshu
(1904).



Charpentier Dragonfly

NC2510

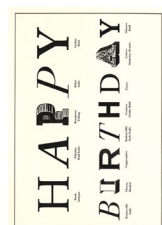
Adapted from
*Libellulinae
Europaeae*
(1840).



To Hell With Birthdays

PB968

Adapted from
a lithograph
by L. Crusius
(1898).



Typographic Birthday

PB2104

Adapted from
*Condensed
Specimen Book*
(Boston Type
Foundry, 1860).



Illuminated Thank You

NC2506

Adapted from
*The Art of
Illuminating*
(1860).



Hübner Butterflies

NC2511

Adapted from
*Sammlung
Europäischer
Schmetterlinge*
(1796–1805)



Great Brown Owl

NC2507

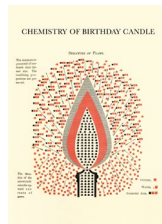
Adapted from
*A Natural
History of Birds*
(1731).



Matchbox Bees

NC2512

Adapted from
a vintage
Indian
matchbox.



Chemistry of Birthday Candle

PB549

Adapted from
*The Chemical
Atlas* (Youmans,
1834).



Illuminated Happy Birthday

PB2316

Adapted from
*The Art of
Illuminating*
(1860).

➔ Art and Design



Watercolours

PB2403

Adapted from
a Lefranc
catalogue
(1924).



The Muses

PB2308

Adapted from
*Bilderbuch für
Kinder* (1805).

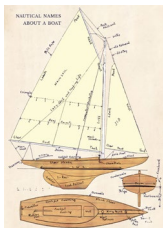


Pencils

PB725

Adapted from
A.W. Faber's
1897 stationery
catalogue.

➔ Hobbies



Nautical
Names

PB2204

Adapted from
*Canoeing,
Sailing and
Motor Boating*
(1919).



Indoor Plants

PB2230

Adapted from
In-door plants
and how to
grow them,
(1861).



Dog Breeds

PB2325

Adapted from
*Harmsworth's
Universal
Encyclopaedia*
(1922).

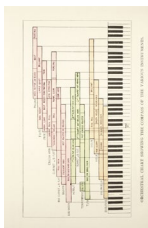
➔ Music



Violins

PB951

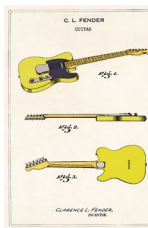
Adapted from
*Encyclopaedia
Londinensis*
(1810).



Orchestral
Chart

PB2224

Adapted from
*Orchestral
Instruments
and What They
Do* (1909).



Fender
Telecaster

PB715

Adapted from
a US patent
application
filed in 1951

➔ Natural World



Fly Agaric

PB965

Adapted from
an anonymous
watercolour
(c.1883-1906).



Whales

PB948

Adapted from
*The Marine
Mammals of the
North-Western
Coast of North
America* (1874).

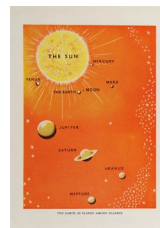


Language of
Flowers

PB2313

Adapted from
an Edwardian
postcard.

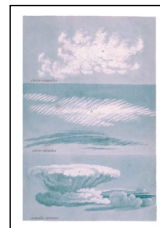
➔ Science



The Planets

PB2419

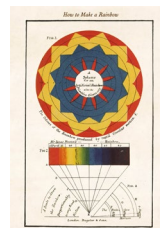
Adapted from
*Newnes
Pictorial
Knowledge*,
(1951).



Cloud Types

PB2034

Adapted from
*On the
Modifications
of Clouds*
(1803).



How to Make a
Rainbow

PB2227

Adapted from
*An introduction
to perspective*
(1845).