

RE_CONSIDERED



FABRECO RETAIL INTERIORS & FURNITURE

WWW.RECONSIDERED.CO.UK

**RE_CONSIDERED is
a circular design
house crafting
sustainable
furniture &
interiors from
textile waste.**

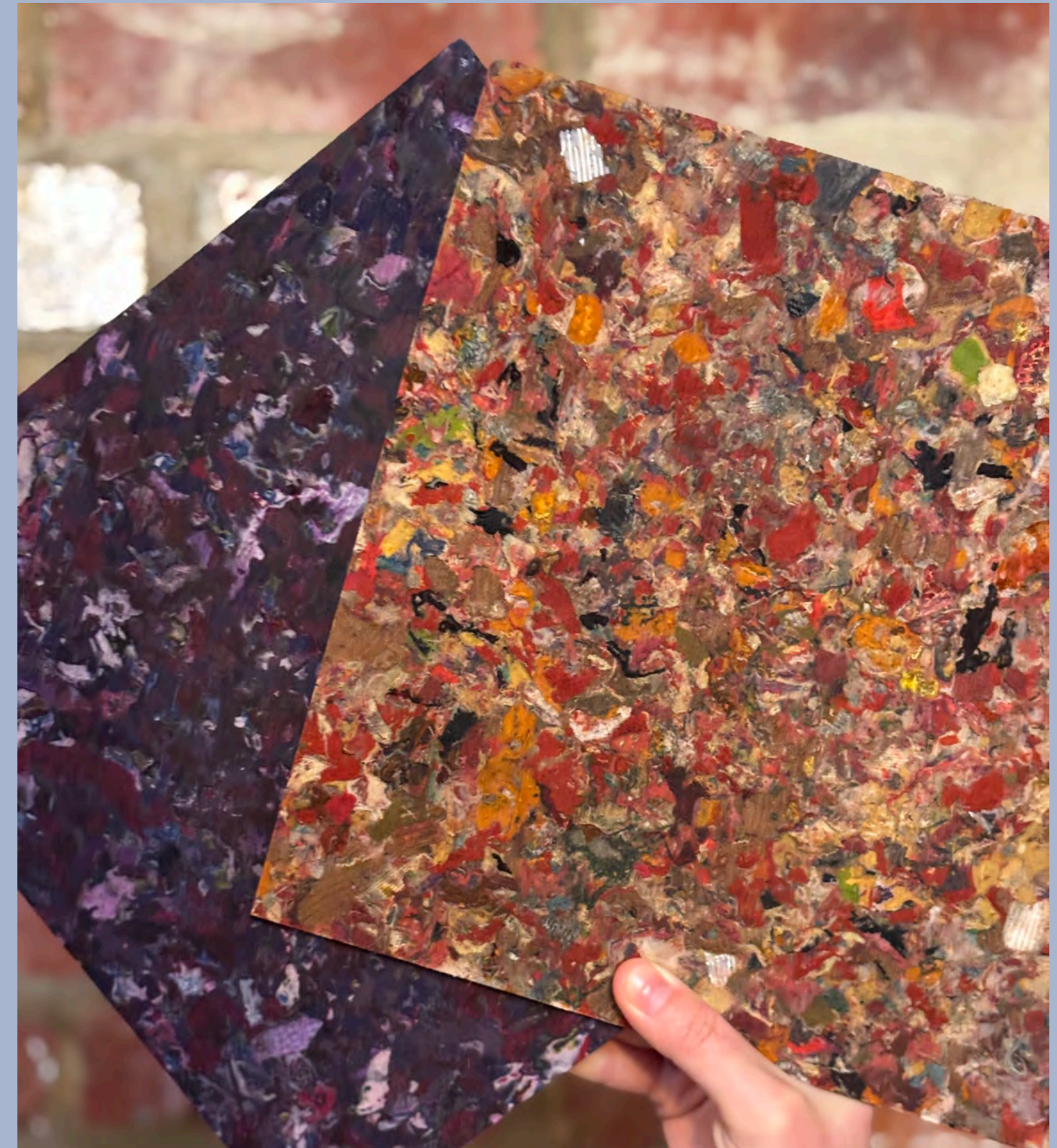


**We turn discarded materials into bold, beautiful, and functional products using
Fabreco® —our signature composite material made from upcycled fibres & bio-resin.**

PANELS & TILES

Elevate your surfaces with purpose

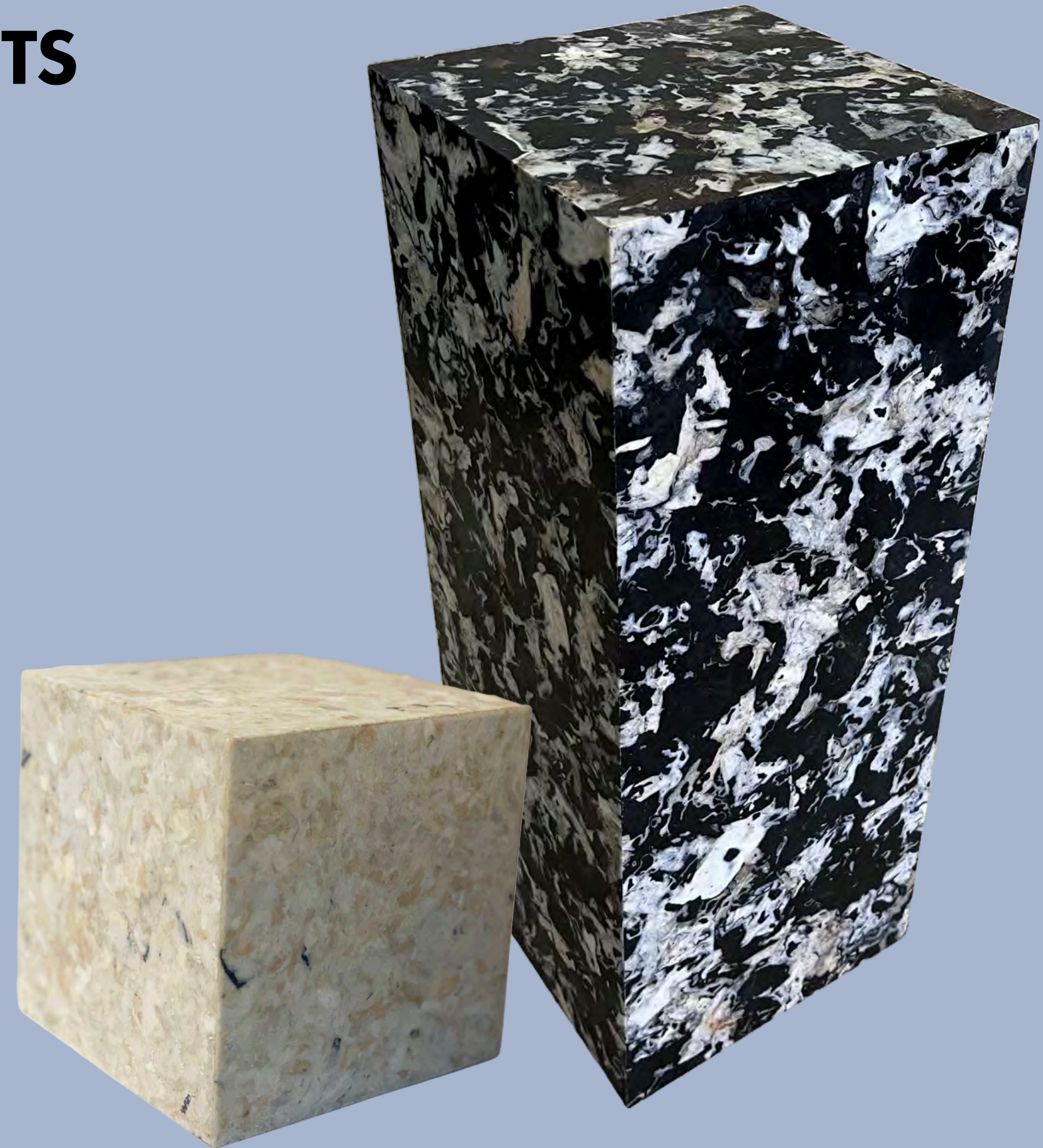
- Fabreco can be CNC cut, sanded, and finished to create wall panels, tiles, and inlays with a distinct textured look. Durable, lightweight, and endlessly customisable—each one tells a story of recycled textiles.



PLINTHS & OTHER DISPLAY UNITS

Sculptural, sustainable, and statement-making

- Use Fabreco to build plinths, shelving, or modular display units with a strong visual identity. Ideal for eco-conscious brands looking to align aesthetics with values.



OTHER MERCHANDISING PRODUCTS

Details that reinforce your brand story

- Fabreco can be shaped into branded coasters, trays, pots, planters, and more. From keyfobs to brooches, these small-scale pieces add a sustainable touch to retail storytelling and gifting.



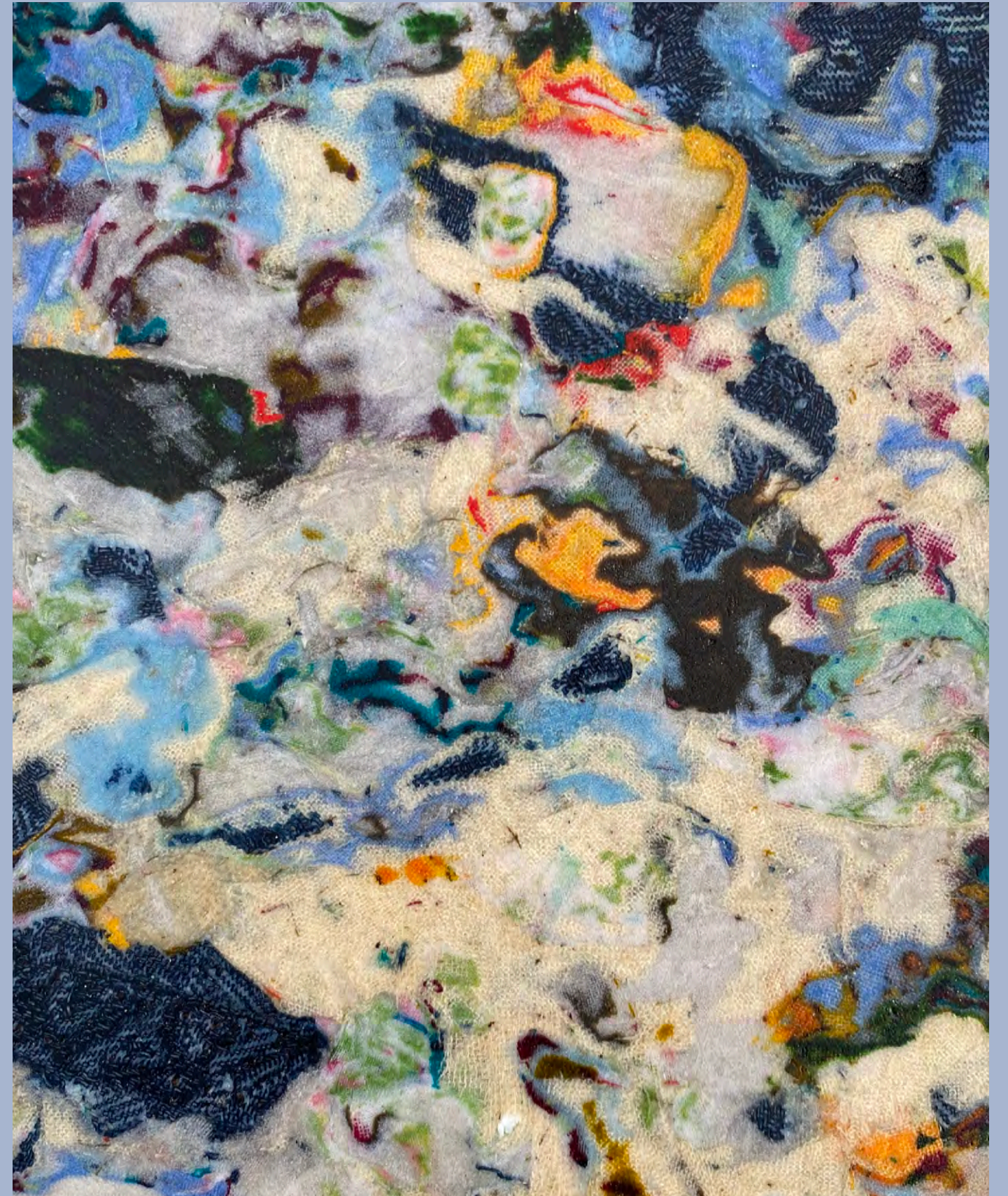
MATERIAL PROPERTIES

- Composite material made from textile waste and bio-resin
 - Volume of each product is between 75%-90% textile waste. This is dependent on the type of textile waste used.
- Smooth, wipable surface
- Water resistant
- Durable
- UV protected
- Marbled
- End grain and face have two distinct looks



COLLABORATIONS

Since 2020, RE_CONSIDERED has partnered with several businesses and organisations to create product collections and interior fit-outs from their waste streams. We're a dynamic team with design and engineering expertise dedicated to finding solutions to the waste created in the retail space.





SASHIMONO STOOL

Chunky marbled stool
Sept 2024

Stool designed in collaboration with Mooka and Matter Forms, the Sashimono Stool weighs 25kg and is made from a mix of shredded black and white cotton.



BLACKHORSE LANE ATELIER

Multi-use boards for furniture
making
Aug 2024

In collaboration with East London textile shredders, FibreLab, we created a series of 700mm x 500mm panels for Blackhorse Lane Atelier's new shop in Soho who are using them to create shop fit out furniture such as desks and shelving units.



KINETIC MOBILES

Store merchandising by
Phineas Harper
February 2025

Crafted as part of TOAST's Spring Summer 2025 collection, A Lightness of Being, Phineas Harper used Fabreco veneers and circular disks to create kinetic mobiles. The mobiles can be seen across 100 TOAST stores globally.





THINK TWICE

Bench made from fashion waste
June 2025

Think Twice is a bold public bench made from fashion waste, installed at 32 Berners Street for the London Festival of Architecture 2025. Created in collaboration with architect Andrada Calin and furniture maker Mark Smith of Isokon Plus, the bench uses Fabreco made from locally sourced textile waste. Inspired by the artistic legacy of Fitzrovia's Bloomsbury Group, Think Twice invites reflection on fashion's environmental impact and our role in climate action

CUSTOMISED SIGNS

**Bespoke engraved signs for
brands
2025**

Made using the brand's waste materials, we created branded signs using a combination of fabric colourways and using the CNC machine to engrave the text.



HOW IT WORKS

1. You send us your textile waste or we source textile waste locally for your project



2. We shred the textile waste at our shredding partners who have a custom built machine for this purpose.



3. Using our innovative process, we transform the shredded textile waste into Fabreco using a bio-resin.



4. At our workshop in Wiltshire, we sculpt, cut, and build products to your specifications.



COLLABORATE WITH US TO TRANSFORM YOUR WASTE INTO WONDER

To get started, request a sample pack to get a feel for Fabreco.



Tabby Bunyan (founder and designer)
tabby@reconsidered.co.uk



www.reconsidered.co.uk



@re_considered



Member of Fashion For Good
Workshop based in Wiltshire, UK

Please note that all designs and images in this deck belong to RE_CONSIDERED.

