

Authentic Jadeite Beauty Tools for Holistic Wellness

thank jade



About Thank Jade



Premium beauty tools
made from 100%
authentic Jadeite.



Ethically sourced from
a single-origin mine in
Kazakhstan.



Certified by GIA,
polished by artisans.



Committed to clean
beauty, sustainability,
and skin health.

Who are we?

A Transparent & Ethical Source of Natural Jadeite:

- **Mine-to-Product Model:** We operate on a vertically integrated model, eliminating middlemen to ensure complete transparency, traceability, and provenance.
- **Certified & Ethical:** Our jadeite is GIA-certified Type A Natural Jadeite, ethically sourced from a single- origin, ESG-compliant mine in Kazakhstan.
- **Conflict-Free Commitment:** We are dedicated to supplying conflict-free jadeite, with a strong focus on sustainability and social responsibility: No child labour, Fair trade wages, No nearby towns or populations affected.
- **Responsible Mining:** Our operations prioritise environmental responsibility and professional mining standards, ensuring every piece is sourced with integrity.



Recently featured in:

Thank jade recently had a launch event at Scarlett House, Bandra showcasing some of its jewellery, architecture, beauty tools and accessories.

VOGUE

Featured on Vogue:
<https://www.vogue.in/promotion/jadeites-quiet-revolution-how-thank-jade-is-making-beauty-sustainable>

BAZAAR^{Harper's}

A glimpse of our launch event As featured on Harper's Bazaar
<https://www.instagram.com/reel/DJ31LM9NtyL/?igsh=ZG80didsZW55azcO>

GRAZIA

As featured on Grazia
<https://www.instagram.com/reel/DKRf3OVK3f6/?igsh=M3Y1cHhhbiluaTZp>

ELLE

As featured on Elle
<https://elle.in/beauty/monsoon-moodboard-the-beauty-launches-were-loving-this-june-9317926>

Why Jadeite?

What makes Jadeite so valuable?



Rarest and most valuable form of Jade.



Naturally cool, non-porous, and durable - ideal for skin tools.



Emits far-infrared energy to stimulate collagen and microcirculation.



Revered for centuries as a symbol of wellness and longevity.



The problem with “Fake Jade”

Widespread mislabeling in the beauty industry.



Many tools labeled “jade” are dyed quartz, marble, or serpentine.



Often treated with acid or resin - harmful to skin and health.



Lack of cooling effect, ineffective in massage or lymphatic drainage.



Deceptive marketing: no transparency, no traceability.



Risks of using fake Jade or dyed Quartz rollers



Skin Irritation & Allergic Reactions

Coated with dyes, bleaches, or chemical resins.
Can trigger breakouts, dermatitis, or allergic responses.
High risk for sensitive, acne-prone, or broken skin.



Chemical Residue Exposure

May contain:
Heavy-metal-based synthetic dyes.
Acidic bleaching agents.
Chemicals can be absorbed through the skin during massage.



No Therapeutic Benefits

Real stones: Naturally cool, sometimes used in traditional wellness.
Fakes (plastic, glass): Lack cooling effect and energetic properties.

Risks of using fake Jade or dyed Quartz rollers



Fragility & Safety Risks

Fake tools often break easily.
Breakage = sharp edges →
potential skin injury.
Shorter lifespan = poor investment.



Ethical & Environmental Concerns

Unregulated manufacturing and
sourcing.
Poor labour conditions.
Environmentally damaging processes.



Hygiene & Mold Risk

Low-quality adhesives trap water.
Risk of mold, bacteria buildup.
Increased chance of skin infections.

How to spot a fake Jade



Real jade:

Cold to touch, heavy, with natural colour variations.



Fakes:

Bright/neon colours, uniform appearance, warm/light feel.

Dyed quartz:

Colour may rub off or look unnaturally vivid.



Thank Jade's authenticity promise

Real Jade. Real Results.



GIA-certified Type A
Jadeite - untreated,
uncoated, unenhanced.



Ethically sourced from
an ESG-compliant
mine.



No middlemen:
mine-to-market
supply chain.



Transparent,
verifiable, and crafted
with care.



GIA certifications:

Our jadeite is certified by the Gemological Institute of America (GIA) the world's leading gem testing Institute as Type A natural jadeite - unheated and untreated. This ensures that the properties of jadeite remain intact, free from resins or other artificial substances.

Send this report to GIA only

GIA GIA GEMOLOGICAL REPORT
JADE REPORT
 GIA REPORT 6505120587
 August 25, 2024

Description: One rough stone
 Shape: Rough
 Measurements: 32.69 x 15.53 x 11.76 mm
 Weight: 38.96 carats

Color: Green
 Transparency: Semi-Transparent To Opaque

RESULTS
 Species: Jadeite Jade
 Type: A

COMMENTS
 No indications of dye or impregnation
 Known in the trade as "Jade Cat."

Image is representative

The term "Jade Cat" refers to jadeite, omphacite and kyanochites.

Definitions of Jade Cat Type	
A	No indications of dye or impregnation
B	No indications of dye, bleached to remove brown color, then impregnated with a polymer
C	Dyed color
B+C	Bleached to remove brown color, then dyed and impregnated with a polymer

The results described only report what was observed. They do not indicate whether the stone is natural or synthetic, whether it is a gemstone or a mineral, or whether it is a natural or synthetic material. The results are based on the information provided and are not a guarantee of the stone's quality or value. For additional information and expert advice, please contact a qualified gemologist or jeweler. © 2024 Gemological Institute of America, Inc.

Send this report to GIA only

Send this report to GIA only

GIA GIA GEMOLOGICAL REPORT
JADE REPORT
 GIA REPORT 6501120253
 August 25, 2024

Description: One faceted stone
 Shape: Freeform Tablet
 Measurements: 62.81 x 52.61 x 6.22 mm
 Weight: 289.89 carats

Color: Mottled Green
 Transparency: Transparent To Opaque

RESULTS
 Species: Jadeite Jade
 Type: A

COMMENTS
 No indications of dye or impregnation
 Known in the trade as "Jade Cat."

Image is representative

The term "Jade Cat" refers to jadeite, omphacite and kyanochites.

Definitions of Jade Cat Type	
A	No indications of dye or impregnation
B	No indications of dye, bleached to remove brown color, then impregnated with a polymer
C	Dyed color
B+C	Bleached to remove brown color, then dyed and impregnated with a polymer

The results described only report what was observed. They do not indicate whether the stone is natural or synthetic, whether it is a gemstone or a mineral, or whether it is a natural or synthetic material. The results are based on the information provided and are not a guarantee of the stone's quality or value. For additional information and expert advice, please contact a qualified gemologist or jeweler. © 2024 Gemological Institute of America, Inc.

Send this report to GIA only

Send this report to GIA only

GIA GIA GEMOLOGICAL REPORT
JADE REPORT
 GIA REPORT 6505119860
 August 25, 2024

Description: One bowl item
 Shape: Pleined Caring
 Measurements: 19.79 x 15.64 x 3.66 mm
 Weight: 15.89 carats

Color: Heterogeneous Green
 Transparency: Semi-Transparent

RESULTS
 Species: Jadeite Jade
 Type: A

COMMENTS
 No indications of dye or impregnation
 Known in the trade as "Jade Cat."

Image is representative

The term "Jade Cat" refers to jadeite, omphacite and kyanochites.

Definitions of Jade Cat Type	
A	No indications of dye or impregnation
B	No indications of dye, bleached to remove brown color, then impregnated with a polymer
C	Dyed color
B+C	Bleached to remove brown color, then dyed and impregnated with a polymer

The results described only report what was observed. They do not indicate whether the stone is natural or synthetic, whether it is a gemstone or a mineral, or whether it is a natural or synthetic material. The results are based on the information provided and are not a guarantee of the stone's quality or value. For additional information and expert advice, please contact a qualified gemologist or jeweler. © 2024 Gemological Institute of America, Inc.

Send this report to GIA only

Trademark registration:

“THANK JADE” has been registered in the following countries:

Australia (grant of protection in place),
UK (grant of protection in place),
EU (Ex-Officio) examination complete.

The following countries have also been applied to for trademark protection of “THANK JADE” and are currently undergoing examination in their respective jurisdictions:

USA, Canada, UAE, India, China, Malaysia, Singapore, Japan and Korea.



Why our Jadeite beauty tools are durable and heirloom-worthy

Exquisite beauty tools, crafted to become heirlooms.



Hardness on the Mohs Scale

Jadeite: 6.5 to 7 – resistant to scratches from softer materials.



Exceptional Toughness

Interlocking crystal structure resists chipping and breaking.



Heirloom-Worthy Durability

Retains beauty and functionality for decades, perfect for family heirloom.

Why Jadeite feels cool to the touch

Thermal Conductivity

- Efficient heat conduction draws warmth away from your skin.
- Compact, dense structure allows quick heat transfer.
- Does not retain heat, so stays cool even at room temperature.

Therapeutic Benefits in Spa Experiences

- **Soothing & Calming:** Helps in reducing skin irritation, swelling, and inflammation.
- **Promotes Relaxation:** Aids in reducing stress and enhances tranquility.
- **Balances Body Temperature:** Helps in regulating heat, enhancing the comfort of facial and massage therapies.



Mine-to-Market Model

How we keep it ethical and accessible.



Direct sourcing from
Kazakhstan.



No intermediaries =
No markups.



Artisanal processing,
no industrial shortcuts.



Professional mine operations +
fair trade wages.



Accessible
luxury

Our Product Line

Ethically Sourced · GIA Certified · Mine-to-Market



01.

Jadeite Gua Sha

A classic sculpting tool made from 100% Type A natural jadeite. Designed for gentle yet effective facial contouring and promoting lymphatic drainage.

How to Use:

- Hold the tool at a 15–30° angle to the skin.
- Glide upwards and outwards over the face and neck.
- Use light pressure and repeat each stroke 3–5 times.

Benefits:

- Enhances facial contours
- Promotes lymphatic drainage
- Boosts skin elasticity and glow
- Reduces puffiness

Measurements:

66 grams
(330 carats)
8.5cm x 5.5cm



02.

Jadeite Facial Roller

A dual-ended facial roller for everyday skin maintenance. Provides an instant cooling effect and helps soothe skin while promoting circulation.

How to Use:

- Roll outward and upward on the face and neck.
- Use the smaller end around the eyes and nose.
- For best results, refrigerate before use.

Benefits:

- Stimulates microcirculation
- Reduces puffiness and inflammation
- Helps skincare absorption
- Soothes sensitive skin

Measurements:

82 grams
(410 carats)
16cm x 4.5cm,
handle 9.5cm



03.

Jadeite Sculptor Gua Sha

A precision tool designed for lifting and sculpting areas like the jawline, brows and also other body parts including back, neck, shoulders, arms, legs and buttocks. Cut crafted for professional and home use.

How to Use:

- Use with light oil or serum.
- Glide along the jawline, cheekbones, and temples.
- Focus on pressure points of the body parts.

Benefits:

- Defines jawline and cheekbones
- Improves skin tone and texture
- Relives body muscle tension
- Eases facial tension

Measurements:

87 grams
(435 carats)
10cm x 6cm



04.

Shroom Sculpt Gua Sha

A unique mushroom-shaped jadeite tool for deep tissue facial massage and acupressure. Ideal for relieving facial muscle tension.

How to Use:

- Hold the stem and use the rounded edge on face and body.
- Apply gentle circular motions for facial massage.
- Use on temples, forehead, and jaw for tension relief.

Benefits:

- Relieves facial muscle tension
- Enhances skin elasticity
- Stimulates blood flow
- Practice helps feel calm

Measurements:

73 grams
(365 carats)
3.8cm x 4.3cm



05.

Twice the Glow Jadeite Roller

A double-ended jadeite roller designed to target both the smooth rolling and the texture rolling with precision.

How to Use:

- Texture roller for an invigorating massage.
- Smooth roller for soothing glide.
- Always roll in an upward and outward motion.

Benefits:

- Helps in reducing puffiness and swelling
- Enhances skincare absorption
- Promotes lymphatic drainage
- Helps reduce tension and tightness

Measurements:

100 grams
(500 carats)
5.5cm x 16.5cm



06.

Panda Eyes Playtime Patches

Pure jadeite under-eye patches that offer an instantly cooling and rejuvenating treatment for tired eyes.

How to Use:

- Place patches under the eyes for 15–20 minutes.
- Can be used on bare skin or over serum.
- Store in the fridge for enhanced cooling effect.

Benefits:

- Reduces under-eye puffiness
- Brightens dark circles
- Hydrates and calms the skin
- Provides a spa-like experience at home

Measurements:

80 grams
(400 carats)
9.3cm x 5.5cm



07.

Circle of Life Eye Patches

Round jadeite patches for multi-functional use - under eyes, on temples, or anywhere that needs cooling and rejuvenation.

How to Use:

- Apply patches over the eyes or on targeted areas for 15–20 minutes.
- Use on temples to calm the mind or reduce tension.
- Clean after use. Store it after fully drying (can store in the refrigerator).

Benefits:

- Hydrates and rejuvenates eye area
- Provides a spa-like experience at home
- Reduces puffiness and signs of fatigue
- Enhances sense of relaxation

Measurements:

140 grams
(700 carats)
7.5cm x 8.5cm



Beauty tools

Customisation available
on request.



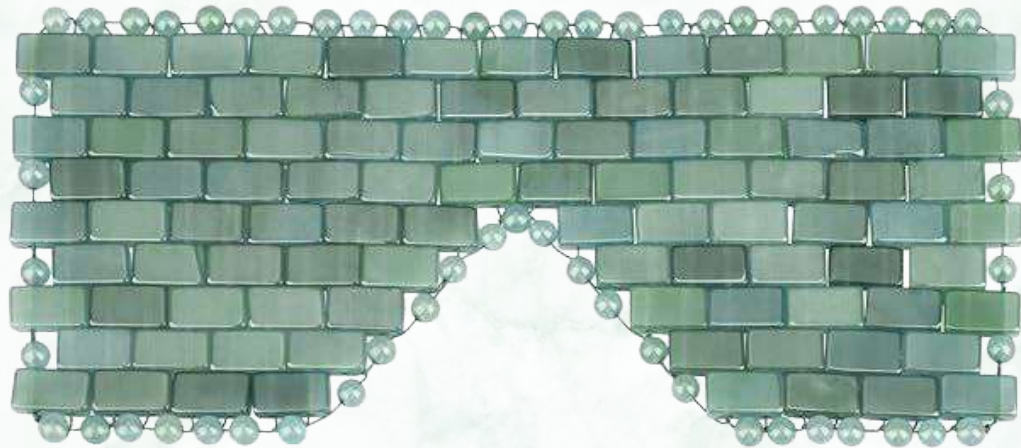
Products in Development.

We can customise any tool or
shape as per requirement.

Any shape
Of Gua Sha



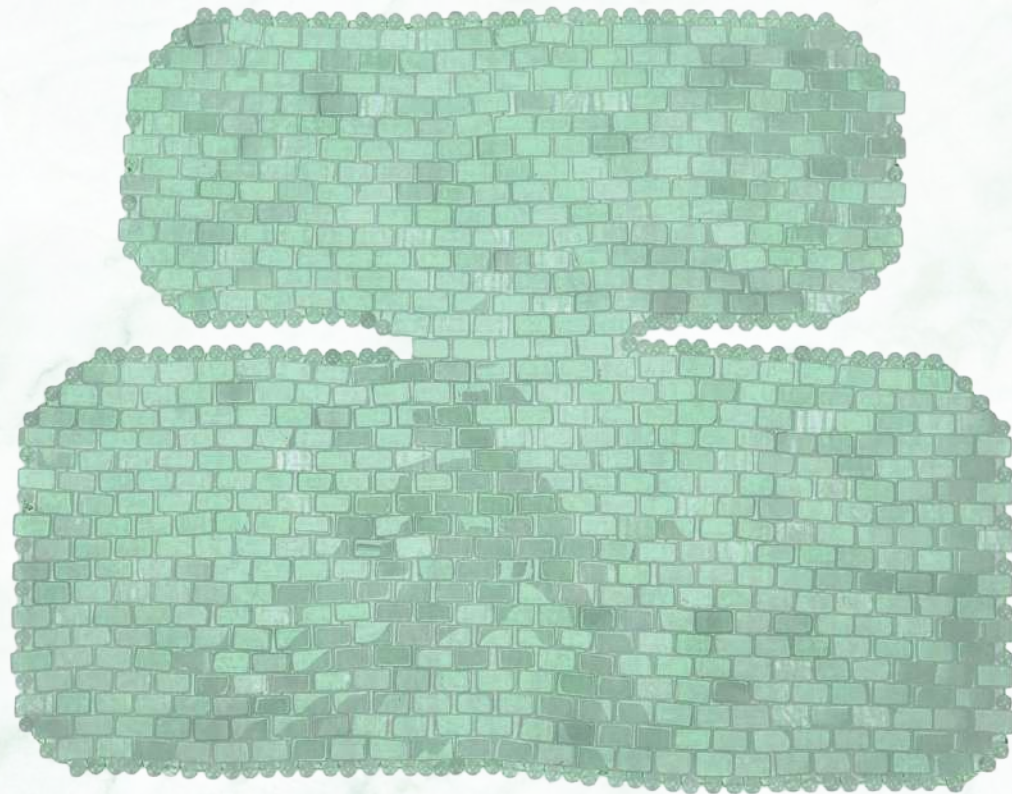
Eye Mask



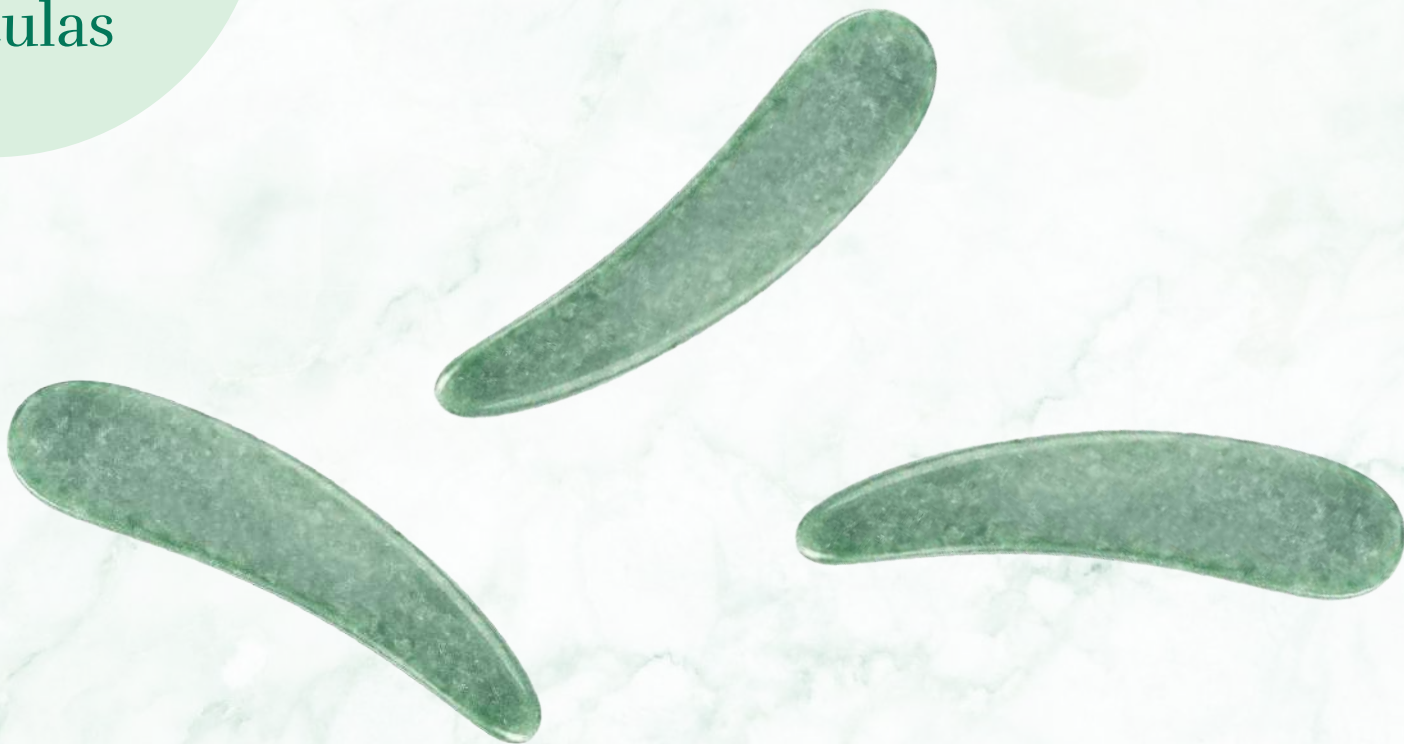
Face Mask



Neck Chest Mask



Spoons / Spatulas



Designed for professionals

For B2B Clients:

- Spa & resort chains.
- Boutique hotels & wellness retreats.
- Beauty retailers & distributors.
- Cosmetic schools & massage therapy institutes.



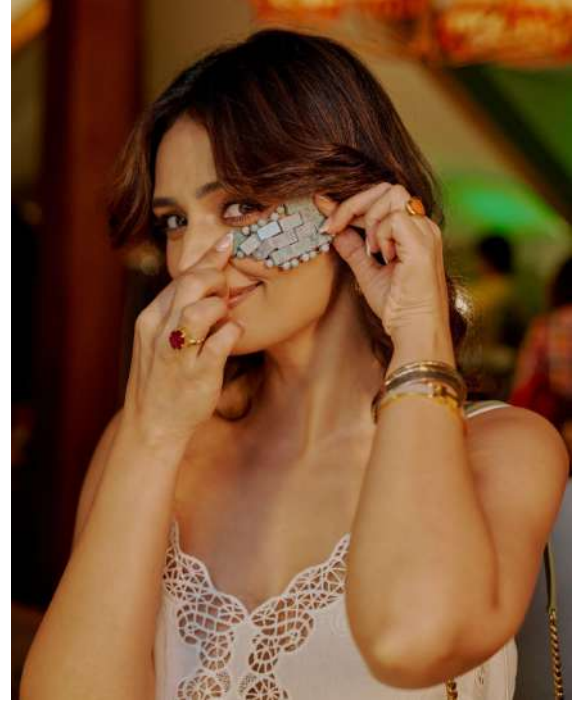


Designed for enthusiasts

For B2C Clients:

- Facialists & aestheticians.
- At-home skincare and gua sha users.
- Clean beauty and conscious lifestyle advocates.

Tools in use



Thank Jade aligns with premium spas & retailers



For Conscious High-End Investors

- Designed for luxury and sustainability.
- Crafted from 100% natural jadeite for lasting beauty and value.



Reinforcing Spa Brand Values

- Elevates experience with authentic wellness tools.
- Aligns with spa's eco-conscious and high-integrity ethos.



Sustainability & Authenticity

- Eco-friendly practices.
- Transparent sourcing and authentic craftsmanship.

A woman is lying down, her eyes closed, in a relaxed state. A hand is holding a green, translucent jadeite tool near her face. In the background, a lit candle provides a warm, ambient light. The overall scene is dimly lit, emphasizing the texture of the jadeite and the woman's peaceful expression.

6 Bespoke Jadeite Rituals for Transformative Wellness

Here are 6 exclusive spa ritual concepts designed around your Thank Jade jadeite tools, each tailored to evoke luxury, rarity, and wellness transformation:

I.

Verdant Alchemy 70 mins

Purpose: Skin renewal + energetic rebalancing.

Concept: A warm herbal steam facial followed by jadeite rolling and lymphatic Gua Sha. Ends with a botanical mist and jade-crystal sound chime.

Ideal Tool: Roller + Gua Sha.

Benefits: Glow, detox, calm mind.

2.

The Silence Ritual 90 mins

Purpose: Emotional reset + sensory deprivation.

Concept: A silent, eyes-closed ritual. Guests lie with jade neck/chest mat while receiving a cool-stone face + scalp massage, synchronised with their breath.

Ideal Tool: Jadeite neck/chest mask, jadeite heart shaped tool.

Benefits: Nervous system recovery, deep rest.

3.

Jade Crown Ceremony 45 mins

Purpose: Head + neck release.

Concept: Warm oil poured onto the crown, followed by a pressure-point massage using jadeite shroom sculpt tools. The ritual ends with a whisper-soft cool stone glide across the forehead.

Ideal Tool: Shroom Sculpt.

Benefits: Tension release, improved clarity, deep scalp stimulation.

4.

Winter Moon Ritual 60 mins

Purpose: Yin energy revival.

Concept: Cool jadeite facials with white lotus oil, rhythmic breathwork, and gentle warm compress draping. Perfect for evening spa menus.

Ideal Tool: Roller and full face jadeite mask.

Benefits: Hydration, reduction of inflammation, sleep prep.

5.

Jade Meridian Lift 60 mins

Purpose: Skin sculpting + qi alignment.

Concept: Traditional Chinese medicine-inspired lifting protocol using the Gua Sha along the body's energy meridians -shoulders, jaw, neck, and cheeks.

Ideal Tool: wing shaped Gua Sha tool.

Benefits: Defined jawline, lymph drainage, qi flow.

6.

The Green Gold Ritual 120 mins

Purpose: Full-body indulgence with facial + limb sculpting.

Concept: A multi-phase body ritual using jadeite tools and full-body Gua Sha, infused with botanical oils.

Ideal Tool: Full jadeite toolkit.

Benefits: Circulation boost, muscle relief, firming.

The strategic edge



GIA-certified
authenticity =
Customer trust



ESG-compliant
sourcing =
Ethical reputation



Direct-to-customer
model =
Affordable luxury



Proven wellness efficacy =
Return on experience



Retail-ready packaging =
Sellable, giftable, unforgettable



Thank Jade is the future

We're not just selling tools,
We're restoring truth to beauty.

- Clean, conscious, and clinically beneficial
- Bridging ancient wellness traditions with modern science
- Leading the new standard in jadeite beauty

Join us in shaping the future of skincare rituals.



Thank You

Contact us for Bulk Orders, Retail
Partnerships & Spa Collaborations.

MOQ pricing available for hotels, spas &
retailers.

Customisation available on request.



Contact Information

Footitude Retail and Lifestyle LLP
(trading as thank jade)

Address: Office No. 102, Plot 14, Bake House,
Maharashtra Chamber of Commerce Lane,
Kala Ghoda, Fort, Mumbai, 400001

Website: www.thankjade.com

Email: hello@thankjade.com

Mobile: Rashmi +91 9076028034
James +91 9076028954

Available on Whatsapp:

+91 9076028034
+91 9076028954
+61 407999603
+61 481233276

thank jade