

# SERAX

TABLEWARE

LIGHTING

HOME ACCESSORIES

FURNITURE

POTTERY

## ABOUT SERAX

Designed in Europe, manufactured all over the world.

Serax is a Belgian design brand, creating contemporary homeware in collaboration with leading international designers and makers. From dinnerware, accessories, lighting, pottery and furniture, the Serax collections are imagined by both established designers and new talent, each with their own distinctive vision and design signature.

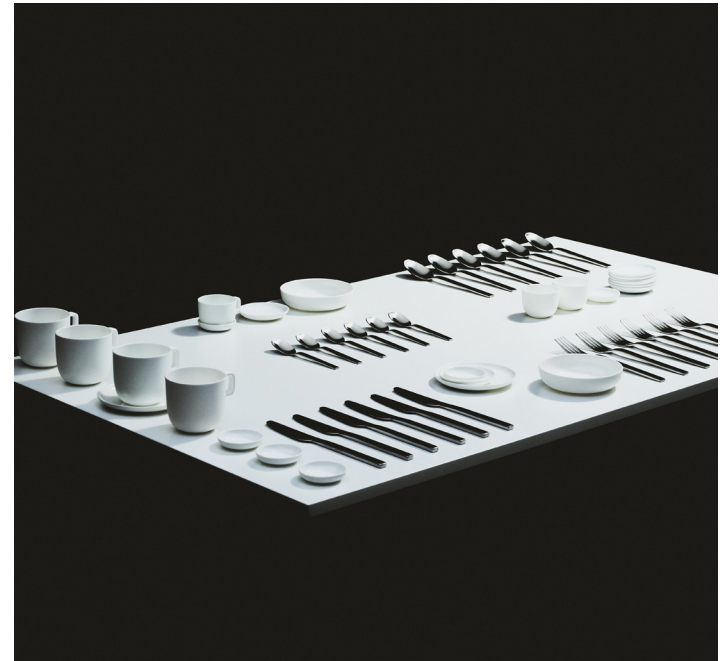
Their creations are realised by skilled craftspeople from across the globe. While unique in design and materiality, the collections remain true to Serax's core philosophy of accessibility, quality and functionality.

## DESIGNERS

Anita Le Grelle  
Ann Demeulemeester  
Antonino Sciortino  
Bea Mombaers  
Bela Silva  
Frédéric Gautier  
Kelly Wearstler  
Kris Van Assche  
Marie Michielssen  
Marni  
Ottolenghi  
Paola Navone  
Pascale Naessens  
Piet Boon  
PLAN C  
Roos Van de Velde  
Seppe Van Heusden  
Sergio Herman  
Shurleey  
Tomorrowland  
Vincent Van Duysen  
Wouters & Hendrix

## DINNERWARE

Serax dinnerware reflects a wide range of materials and styles: from refined bone china to tactile ceramic stoneware. Each collection is thoughtfully created with leading international designers to elevate your dining experience. Indulge in a complete tableware set or curate your own mix of teapots, cake stands, dessert plates, jugs and serving dishes from your favourite creators.



*Base* dinnerware by Piet Boon

## HOME ACCESSORIES

From sculptural and bold vases to playful candle holders, scented candles and distinctive design objects, Serax home accessories bring creative energy into the home. Each piece invites new combinations and ways of living with objects, adding layers of personality to any space.



*Base dinnerware by Piet Boon*

## LIGHTING

Serax lighting unites sculptural forms with purposeful design. From pendant lights and floor lamps to table lamps and wall lights, each piece creates atmosphere through material, shape and light. Developed with international designers, these special lighting objects add depth and character to everyday interiors.



*Base dinnerware by Piet Boon*

## POTTERY

Pottery and ceramics remain at the heart of Serax' identity. The collection of planters and plant pots ranges from bold and sculptural to minimalist and understated. Each piece is a tribute to craftsmanship and creativity.



*Base* dinnerware by Piet Boon

## FURNITURE

Serax furniture blends modern aesthetics with craftsmanship, creating pieces that suit any space, urban, rural, or refined. Designed to last, each item is both functional and artistic, bringing timeless Belgian design to indoor and outdoor living.



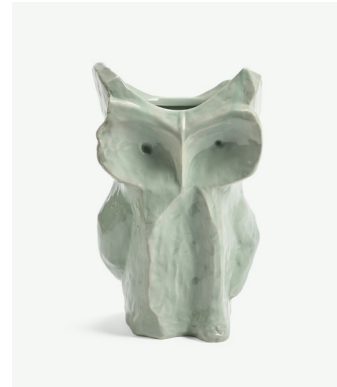
*Base* dinnerware by Piet Boon



*Santiago de Borja* by Shurley



*Seam* by Seppe Van Heusden



*After Midnight* by Marni



*Unity* by Tomorrowland



*Midnight Flowers* by Marni



*Out of Lines* by Uncharted



*Romé* by Alex Gabriel



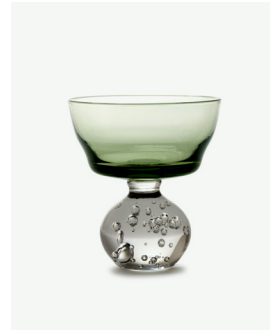
*Infinity* by Bela Silva



*Terres de Rêves* by Anita Le Grelle



*Fish & Fish* by Paola Navone



*Eternal Snow* by Bela Silva



*Volumes* by Piet Boon



*Dé* by Ann Demeulemeester



*Dune* by Kelly Wearstler



*The Josphine Collection* by Kris Van Assche



*Silhouette* by Sergio Herman



*Dune* by Kelly Wearstler



*Silos* by PLAN C



*Metal Sculptures* by Antonino Sciortino



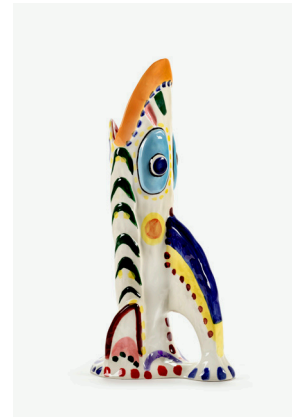
*Cathérine* by Marie Michielssen



*Side Tables* by Marie Michielssen



*Les Objets Mouvables* by Wouters & Hendrix



*Sicily* by Ottolenghi



*Base* by Piet Boon

C O N T A C T

info@serax.com  
retail@serax.com  
hospitality@serax.com  
project@serax.com  
press@serax.com

Press images available at [media.serax.com](https://media.serax.com)

Published by Serax 2025  
All content copyright © Serax 2025



[View all catalogues](#)