

SHANLE LAB CO-OP GUIDE BOOK

HOW TO BE OUR PARTNER

- 01 SUBMIT APPLICATION
- 02 GET SAMPLES
- 03 CONFIRM QUOTATION
- 04 DISTRIBUTION & AUTHORIZATION AGREEMENT
- 05 PLACE FIRST ORDER
- 06 PERIODIC NEW PRODUCTS & RESTOCKING



CONTRACT



AUTHORIZATIONS



JOINTLY CREATE



INNOVATION

Mobile / wechat: +86 19928374243

Email: newbiz.gz@shanlelab.com

China Headquarter: 19/F, Zhongyong Building, No.99 Changdi Road, Yuexiu District, Guangzhou, Guangdong, China 510120



Whatsapp
+44 7568999454
(SHANLE LAB)



instagram:
shanlelab.official

EC: www.shine-lab.net

INTRO

To Our Valued Collaborators

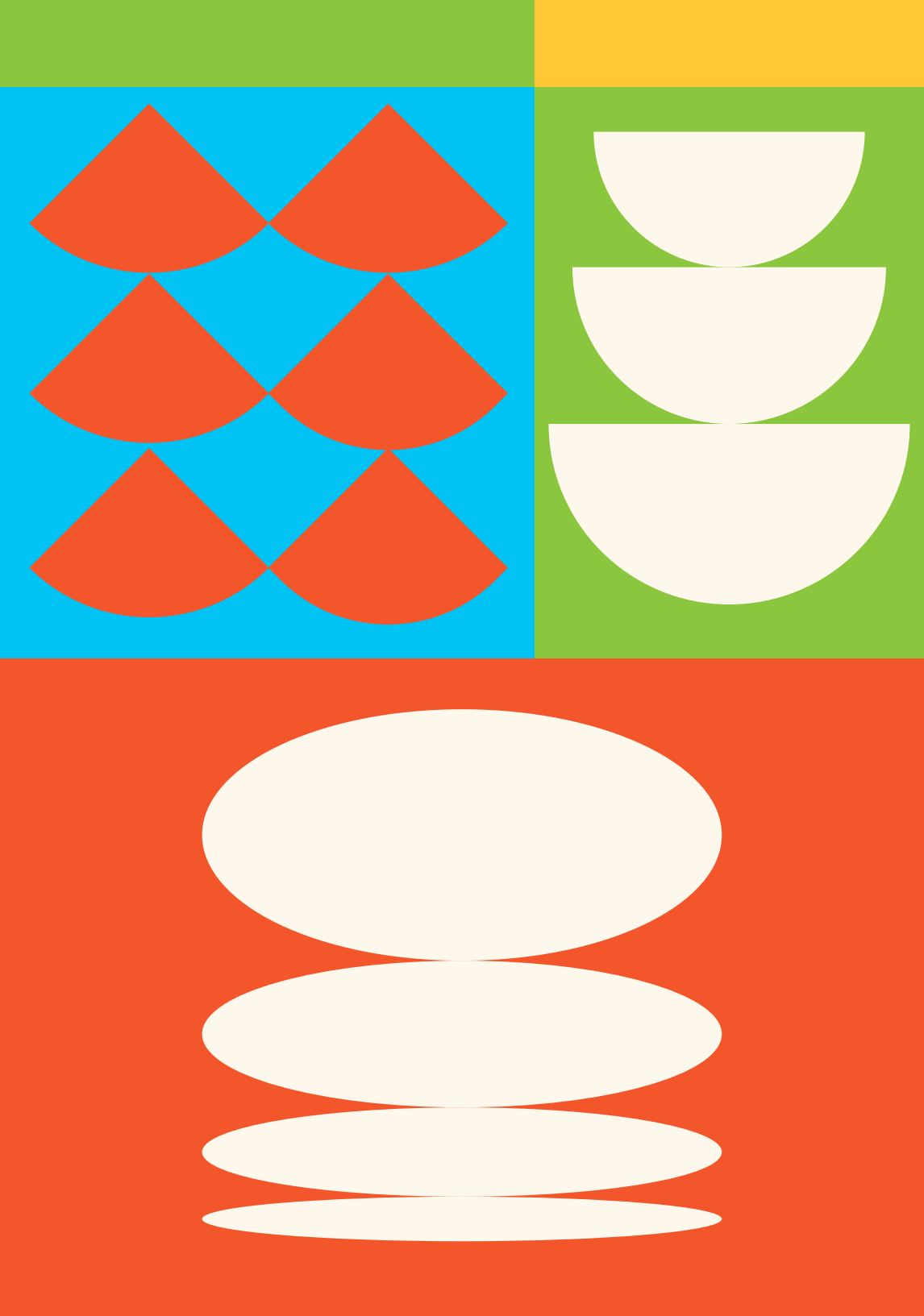
Art is an essential part of life, and for our team, it holds paramount importance. Over the past 20 years, we've worked tirelessly to build our brand and secure our place in the industry. Today, art in China is no longer distant or exclusive-it's fluid, vital, and woven into daily life.

In 2024, we launched SHANLE LAB as a new creative platform to share the power of art with the world. Drawing on our legacy, SHANLE LAB will continue to deliver top-tier creative resources, embracing both traditional artistry and modern innovation. Whether your work honors heritage or experiments with new forms, we are here to support you and walk this path together.

Let your work be seen. Let it shine globally-with us by your side.

With gratitude,
CEO of SHANLE





01 WHAT IS
SHANLE LAB

02 WHY
SHANLE LAB

03 WHO'S
SHANLE LAB FOR?

04 PEAK WORKMANSHIP:
CRAFTED FOR COMFORT

05 PRODUCT
SERIES

CATALOG

01

WHAT IS SHANLE LAB

Sticker
therapy for
Gen Z

SHANLE LAB creates art stickers for Gen Z, fusing craft with pop culture. Collaborating with global artists and intellectual properties (IPs), our eco-friendly stickers serve as personal expressions and lifestyle accessories. Perfect for gifting and decor, we offer unique wholesale solutions to revitalize your retail space.

Transforming art into tangible emotional companions: where digital creativity meets physical craft.

02 WHY SHANLE LAB

SHANLE CAPABILITY

200+

PROFESSIONAL TALENTS

120+

WORKS & PATENTS

40+

TOP-TIER INT'L
IP LICENSES

200,000+

SHEETS PRODUCED
DAILY

SOLD ACROSS 4 CONTINENTS

WHY CHOOSE US

■ 1.5 BILLION SHEETS
SINCE INCEPTION

■ 70 MILLION+
STICKERS
ANNUALLY

■ INDUSTRY-LEADING
MANUFACTURING

■ HIGH-QUALITY
STICKER RANGE

■ FULL SAFETY TEST
REPORTS

■ EXTENSIVE
GLOBAL SALES

■ INDUSTRY-LEADING
IP LICENSE
PORTFOLIO

03

WHO'S SHANLE LAB FOR?

The top-ranking sticker brand on RedNote, loved by young trendsetters.

We organize our core products—from home decor and streetwear to sports and tech accessories—by usage scenario, analyzing each category's market potential and target audience. In tune with current trends, we launch products that meet both mass appeal and niche interests.

CREATIVE JOURNALS
SPIRITUAL SOLACE



ARTISTIC VIBE



TRENDY OUTFIT



CASUAL
LIFESTYLE

CREATOR INSPIRATION



DIGITAL ACCESSORIES



SPIRITUAL
HEALING



TRENDY
ACCESSORIES

CREATIVE
ACCESSORIES



TRAVEL

04

PEAK WORKMANSHIP: CRAFTED FOR COMFORT

The secret to exceptional craftsmanship, engineered for comfort. Learn more about our products and proprietary materials.

PIPI STICKER

PIPI Stickers are crafted from high-quality PU leather and made with eco-friendly lotus leather. Featuring distinct, long-lasting 3D texture, each piece holds its shape over time. The bottom layer uses recyclable 3M adhesive for strong, repositionable grip.



ART STICKER



PREMIUM TACTILES

CHEWY STICKER

Crafted from eco-friendly foam, Chewy Stickers feature laser-engraved patterns for refined detail and layered color. The unique 2.5D curved design offers a soft, muscle-like pressure with satisfying elastic feedback—a tactile experience made to relieve stress.



ART STICKER



PULL & PLAY

PUFFY STICKER

Puffy Stickers are crafted from eco-friendly foam and printed with proprietary technology for vivid, delicate colors. The 3D curved surface offers a soft, plush touch, while its gentle glow provides all-day spiritual comfort.



ART STICKER



CLOUD SOFT

YOUNG STICKER

YOUNG Sticker uses composite PP synthetic paper paired with textured protective films. Waterproof and stain-resistant, it offers a unique tactile experience. Advanced techniques like digitally-enhanced cold stamping and multi-point UV create rich visual effects.



ART STICKER



SMART SHINE

05

PRODUCT SERIES



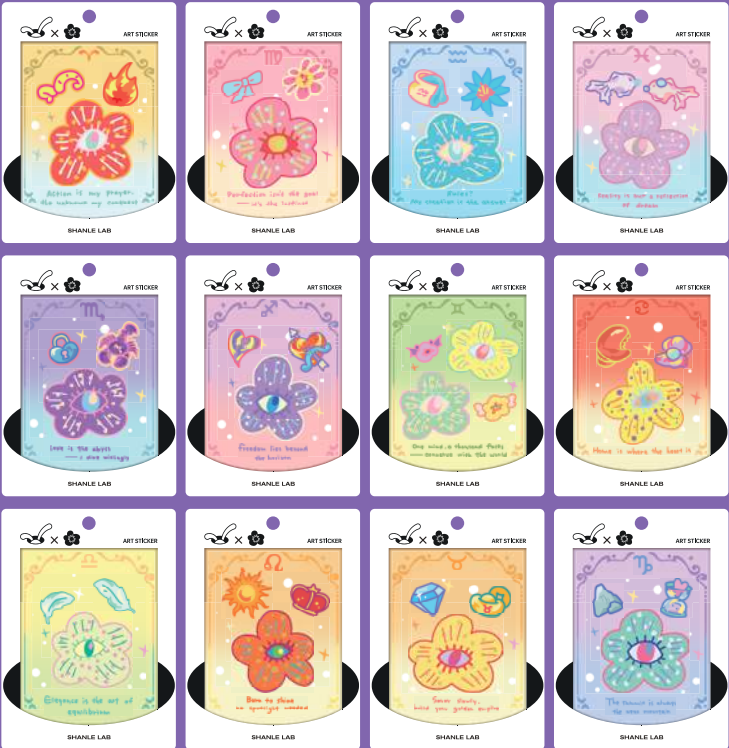
SERIES ATOMO FAFA

PRE-
ORDER



SERIES ATOMO FAFA ZODIAC

PRE-ORDER



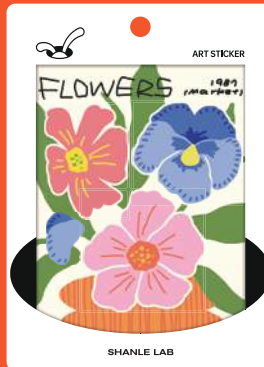
SERIES SUBTROPICAL PLANT

PRE-ORDER

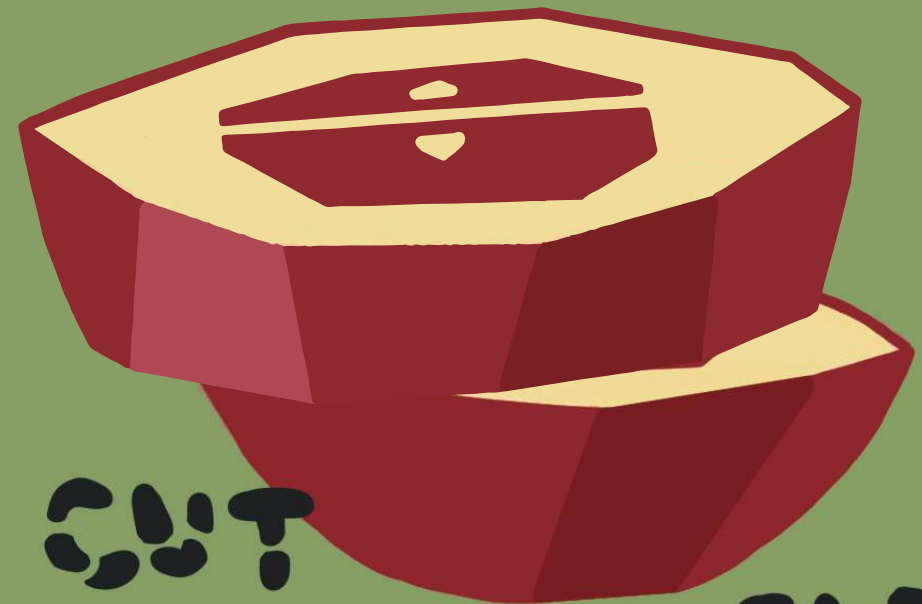


SERIES POLYGON VEGETATION

PRE-ORDER



WELCOME APPLE



CUT and CUT CUT

SERIES ARTIST DIRTY MONKEY

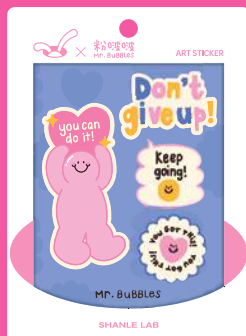
FREE ORDER



SERIES ARTIST GEORGE

PRE-
ORDER

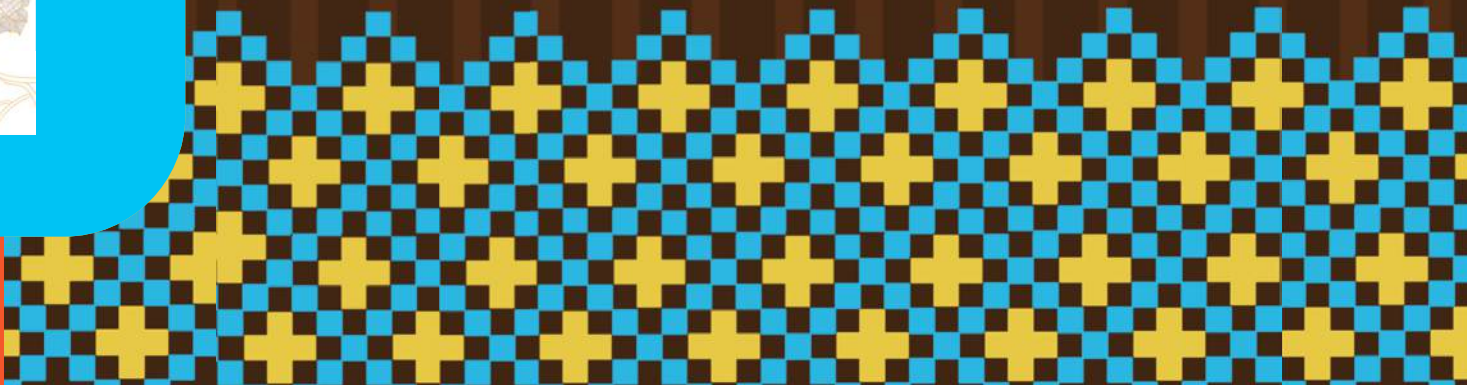




SERIES
THE
RABBIT HOLE



SHANLE
LAB



SERIES MAH- JONG

PRE-
ORDER



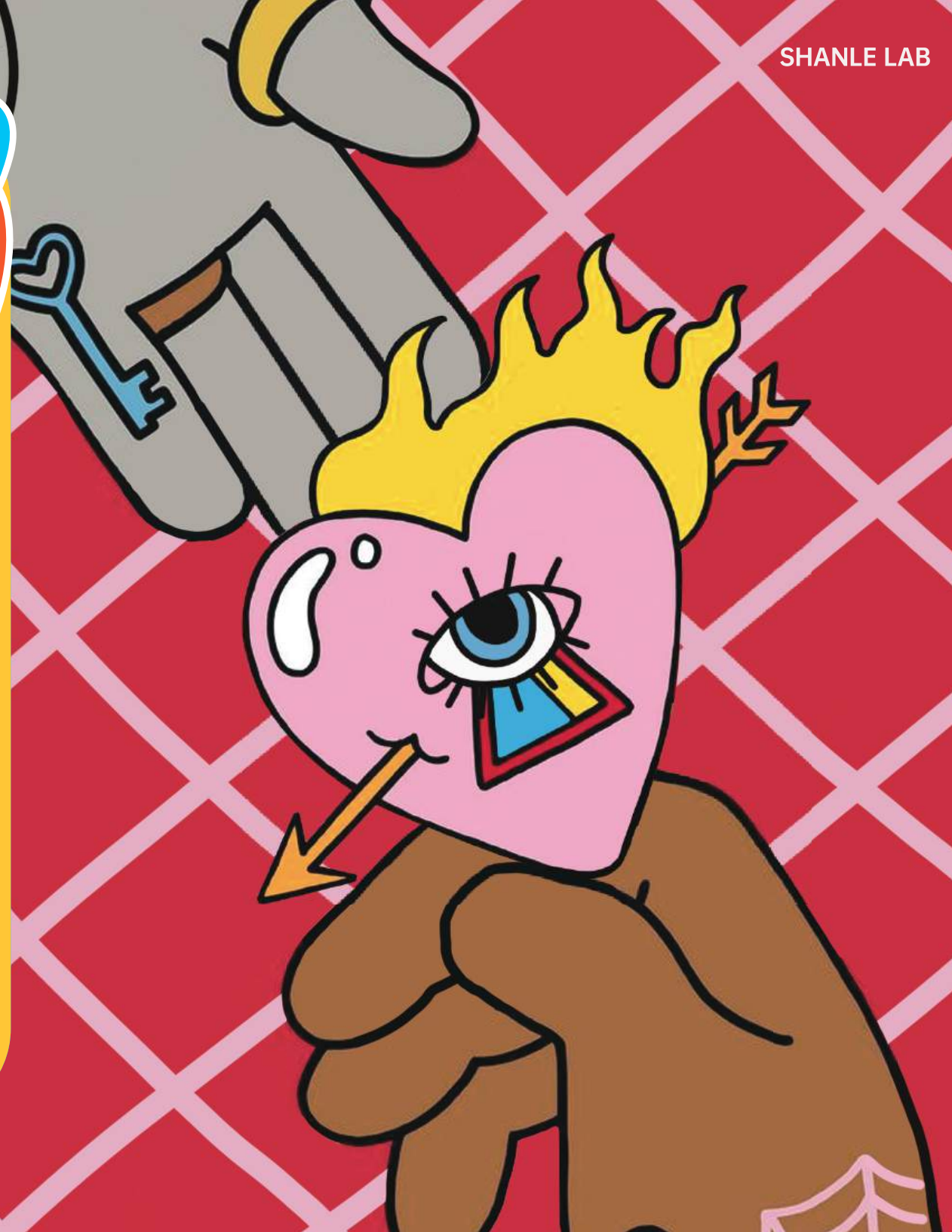
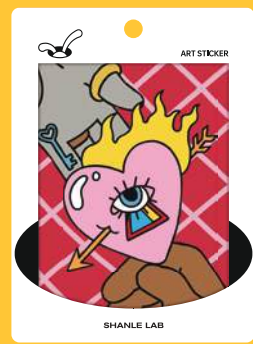
SERIES
PEACE
AND ART

PRE-ORDER



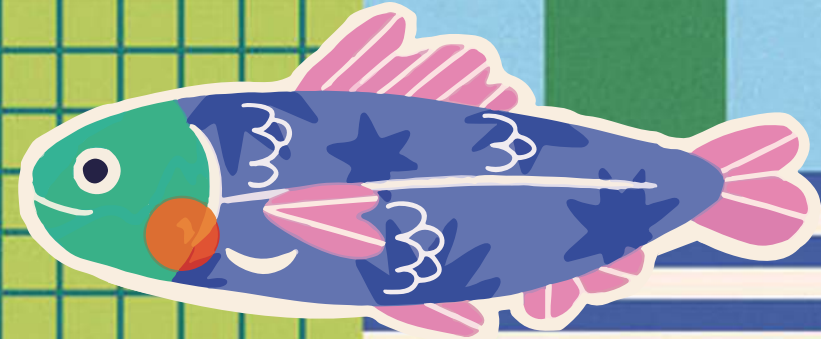
SERIES
E=MC²-JI

PRE-ORDER



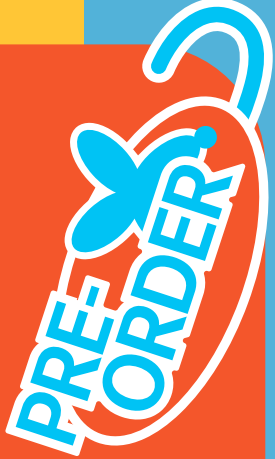
SERIES FEVER FAUNA

PRE-ORDER





SERIES
STREET
VALUE



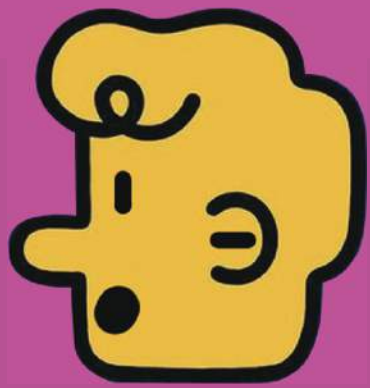
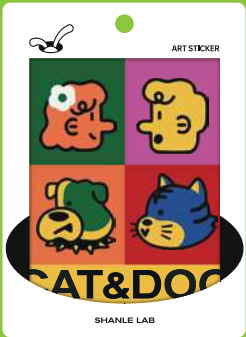
APPLE



SERIES THE PLAY FACE



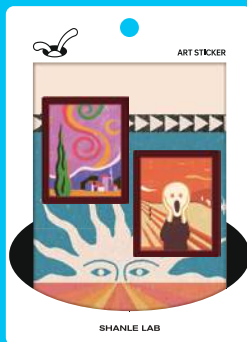
SERIES
FROLIC



CAT&DOG
CUTE

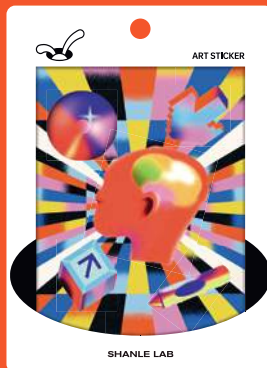
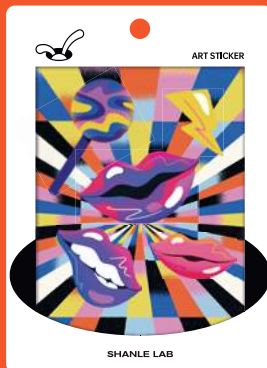
SERIES ASSEMBLAGES

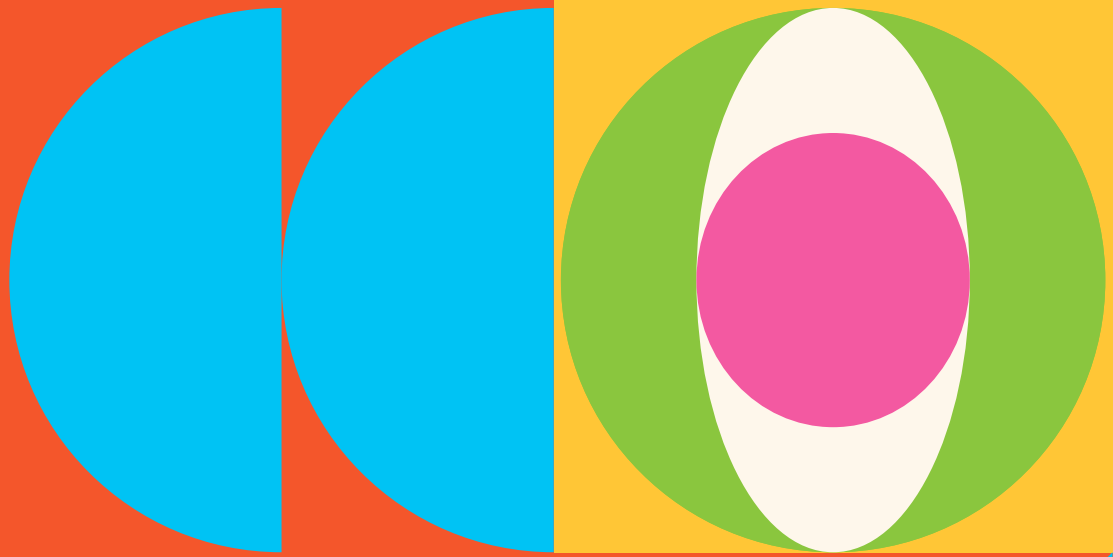
PRE-ORDER



SERIES RADIO SENTIMENT

PRE-ORDER





THANKS

