

# WILDLIFE GARDEN



*Joyful designs  
inspired by nature*





*Photo: Mette Ottosson*

# From Birdsong to Sea Breeze

*From dawn's chorus to the sound of waves against rocks – nature's beauty is present in every moment.*

It is here, in the poetry of daily life and the closeness of nature, that we find inspiration for our designs.

We cherish the small details: the way a hand-carved bird reminds us of a woodland walk, how a cat-shaped hook in the hallway brings a smile as we hang up our coats, and how the soft glow of candlelight enhances the time spent around the table.

This spring at Wildlife Garden, new arrivals carry that same spirit of nature into the home and garden. The Ripple series grows with a graceful candle holder and an elegant bottle coaster. Two new Multiholks – one in a modern Nordic style, the other inspired by a brick house – offer birds food and shelter year-round. At the table, animal napkin rings and wooden boxes combine a playful character with timeless function.

Our hook collection expands with five beloved cat breeds and a majestic tiger, while new feathered companions join the DecoBird family. From the sea,

keyrings shaped by marine life bring the coastal breeze into everyday life.

All our products are crafted from carefully chosen materials, expressing a Scandinavian design language that is both timeless and playful. We take the time that creation deserves, never compromise on quality, and take pride in using materials that age with beauty and character.

From birdsong to sea breeze, our spring collection is an invitation to let nature live with you, in every detail.

*Helena Nobel*



# Wildlife Garden

## *Spring 2026*

From Birdsong to Sea Breeze	2
Where Nature & Crafts Meet	6
Organise	8
Hand-carved Hooks	10
Pens	16
Clips	16
Magnets	17
Key Cabinets	19
Keyrings	19
Wall Hangers	21
Bookends & Letter Holder	21
Wooden Boxes	22
Tableware	24
Bottle Coaster	26
Bowls	26
Coasters	28
Candle Holder	28
Napkin Rings	29
Bottle Openers & Stoppers	31
Salt & Pepper Mills	34
Kitchen Roll Holders	35
Cake Testers	36
Nutcracker	37
Tablecloth Weights	37
Home Accessories	38
Cabinet Knobs	40
Diffuser	41
Wood-carved Animals	42
Silhouettes	43
Cast Iron Sculptures	44
DecoBird—Wood-carved Birds	45
Doorstops & Shoehorns	55
Nests & Feeders	56
Multiholk	58
Multifeeder Barn	60
Bird Feeder with Bath	60
Metal Cottage Feeders	61
Suet Ball Feeder Star	61
Giant Feeder	62
Combi Feeder Seeds	62
For Pollinators and Other Garden Visitors	63
Posts & Mounts	64
Retail Displays	66





AIX GALERICULATA  
*Mandarinand*



# Where Nature & Crafts Meet

Inspired by everyday needs and the rich language of nature, we create products where function meets beauty. Motifs and colours are drawn from plants, animals, forests, seas, and skies – elements that give each object a strong connection to the natural world.

For us, material is just as important as form. By combining time-honoured techniques with carefully chosen woods, durable metals and glass, we create pieces that are not only beautiful but built to last. Our methods honour traditional artisanship while highlighting the unique character of every product.

## *Carving & Shaping*

**Chip-carving:** An old Nordic technique where geometric and organic patterns are cut directly into the wood – adding both texture and visual depth.

**Hand-carving:** Roughly shaped by machine, then refined entirely by hand. Each cut bears the artisan's mark, giving every piece its individuality.

**Wood-turning:** A centuries-old method where spinning wood is shaped into flowing forms with a harmonious finish.



## *Finishes & Colour*

**Hand-painting:** Applied in several layers, each brush stroke creates a lively texture and subtle variations. No two pieces are alike.

**Linseed oil:** A traditional flaxseed-based finish that penetrates deeply, enriching colour and forming a protective surface as it hardens.

**Water-based acrylic paint:** Modern, solvent-free, and quick-drying. Provides even coverage while preserving the wood's natural grain.



## *Materials*

**Cherrywood:** Dense and warm, deepening in colour over time. Long prized in fine woodworking.

**Limewood:** Pale and soft, beloved by sculptors since the Middle Ages for its smooth workability.

**Pine:** A classic, durable and resin-rich wood, offering natural protection against moisture and decay.

**Glass (borosilicate):** Lightweight yet strong, resistant to heat and cold. Practical and refined.

**Sheet metal:** Versatile and resilient, with powder coating or galvanisation to extend outdoor life.

**Cast iron:** Robust and weighty. Outdoors, it develops a warm rust patina – a living finish that deepens with age.



Together, these materials and techniques form the foundation of Wildlife Garden's designs – where nature and craftsmanship come together to create pieces meant to be shared. Each product is developed in close collaboration with our long-standing suppliers in China, with whom we continuously refine existing products and create new ones. Through regular visits, close communication, and our own team on site, we ensure that every piece meets our high standards of quality and craftsmanship.



# Organise

Shapes borrowed from nature give these everyday items their own playful design language. From carved magnets and keyrings to key cabinets, hand-carved

hooks, and bookends, these functional items create a personal style that keep things organised and tidy in the hustle and bustle of daily life.





20



22



13



# Hand-carved Hooks

Let nature be part of your homeware with these nature-inspired wall hooks. This impressive family of handcrafted hooks features intricate depictions of wild and domesticated animals, and handpicked individuals from the fungal kingdom. Each hook is a genuine piece of craftsmanship with a unique expression.

The hook is made of metal and attaches to a wall using a screw. Each hook comes with an informative booklet about the depicted species.

**Materials vary by model\*:** basswood, water-based acrylic paint, glass\*, brass-finished zinc alloy.

**Dimensions:** L: 37–103 W: 37–100 H: 98–185 mm

**Weight:** 60–93 g | 4 / pack



WG4488  
Hook-S America  
Alpaca



WG4490  
Hook-Dog  
Labrador Retriever



WG4491  
Hook-Dog  
German Shepherd  
Dog



WG4492  
Hook-Dog  
French Bulldog



WG4493  
Hook-Dog  
Chihuahua



WG4494  
Hook-Dog  
Australian  
Shepherd



WG4495  
Hook-Dog  
Golden Retriever



WG4496  
Hook-Dog  
Jack Russell Terrier



WG4497  
Hook-Dog  
Springer Spaniel



WG4498  
Hook-Dog  
Dachshund



WG4499  
Hook-Dog  
Siberian Husky



WG4500  
Hook-Dog  
Poodle



WG4501  
Hook-Europe  
Eagle-owl



WG4502  
Hook-Europe  
Lynx



WG503  
Hook-Europe  
Wild Boar





WG4504  
Hook-Europe  
Red Fox



WG4505  
Hook-Europe  
Grey Wolf



WG506  
Hook-Europe  
Brown Bear



WG507  
Hook-Europe  
Roe Deer



WG4508  
Hook-Europe  
Moose



WG509  
Hook-Europe  
Red Deer



WG510  
Hook-Europe  
Mountain Hare



WG4560  
Hook-Europe  
Squirrel



WG4511  
Hook-Farm Animal  
Hen



WG513  
Hook-Farm Animal  
Arabian Horse



WG514  
Hook-Farm Animal  
Pig



WG515  
Hook-Farm Animal  
Black & White Cow



WG516  
Hook-Farm Animal  
Goat



WG4517  
Hook-Farm Animal  
Sheep



WG518  
Hook-Farm Animal  
Donkey



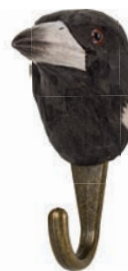
WG519  
Hook-Farm Animal  
Rooster



WG520  
Hook-Farm Animal  
Duck



WG4548  
Hook-Farm Animal  
Ram



WG4489  
Hook-Australia  
Australian Magpie



WG521  
Hook-Australia  
Koala





# Hand-carved Hooks

**Materials vary by model\*:** basswood, water-based acrylic paint, glass\*,  
brass-finished zinc alloy.

**Dimensions:** L: 37–103 W: 37–100 H: 98–185 mm

**Weight:** 60–93 g | 4 / pack



WG522  
Hook–Australia  
Kangaroo



WG523  
Hook–Australia  
Kookaburra



WG524  
Hook–Australia  
Emu



WG525  
Hook–Australia  
Wombat



WG526  
Hook–Australia  
Quokka



WG527  
Hook–Australia  
Camel



WG4528  
Hook–Australia  
Platypus



WG4529  
Hook–Australia  
Sulfur-crested  
Cockatoo



WG4530  
Hook–Australia  
Galah



WG4549  
Hook–Australia  
Crocodile



WG4531  
Hook–Asia  
Panda



WG4561  
Hook–Asia  
Tiger



WG4532  
Hook–Africa  
Lion



WG4533  
Hook–Africa  
Elephant



WG4534  
Hook–Africa  
Giraffe



WG4535  
Hook–Africa  
Leopard



WG4536  
Hook–Africa  
Rhinoceros



WG4537  
Hook–Africa  
Chimpanzee



WG4538  
Hook–Africa  
African Buffalo



WG4539  
Hook–Africa  
Hippopotamus

# Hand-carved Hooks

**Materials vary by model\*:** basswood, water-based acrylic paint, glass\*,  
brass-finished zinc alloy.

**Dimensions:** L: 37–103 W: 37–100 H: 98–185 mm

**Weight:** 60–93 g | 4 / pack



WG4540  
Hook-Africa  
Common Eland



WG4541  
Hook-Africa  
Zebra



WG4542  
Hook-N America  
Bald Eagle



WG4543  
Hook-N America  
American Bison



WG4544  
Hook-N America  
Raccoon



WG4545  
Hook-N America  
Beaver



WG4546  
Hook-N America  
Black Bear



WG4547  
Hook-N America  
Northern Cardinal



WG4550  
Hook-Mushroom  
Chanterelle



WG4557  
Hook-Mushroom  
Penny Bun



WG4558  
Hook-Mushroom  
Fly Agaric



WG4512  
Hook-Cat  
Ginger Cat



WG4620  
Hook-Cat  
Black & White Cat



WG4621  
Hook-Cat  
Tabby Cat



WG4622  
Hook-Cat  
Siamese Cat



WG4623  
Hook-Cat  
Norwegian Forest Cat



WG4624  
Hook-Cat  
Persian Cat



WG4793  
Hook-Polar  
Polar Bear



WG4794  
Hook-Polar  
Seal



WG4796  
Hook-Polar  
Arctic Fox





WG4797  
Hook-Polar  
Penguin



WG4798  
Hook-Polar  
Arctic Hare



WG4799  
Hook-Polar  
Atlantic Puffin



WG4795  
Hook-Polar  
Snowy Owl



# Pens

Our collection of wood-carved ballpoint pens playfully depicts nature's creations. The feather pens capture the plumage of the jay, dove, and woodpecker. The

vegetable pens come wrapped in a hemp cord, making them easy to store.

**Material:** basswood, water-based acrylic paint, plastic, black ink, metal, hemp twine.

**Weight:** 8–15 g

WG530  
**Pen**  
**Pigeon**  
L: 36 W: 9 H: 164 mm  
6 / pack



WG531  
**Pen**  
**Jay**  
L: 36 W: 9 H: 164 mm  
6 / pack



WG532  
**Pen**  
**Woodpecker**  
L: 35 W: 10 H: 136 mm  
6 / pack



WG535  
**Pen**  
**Green Bean**  
L: 35 W: 15 H: 150 mm  
6 / pack



WG536  
**Pen**  
**Carrot**  
L: 22 W: 18 H: 115 mm  
6 / pack



WG537  
**Pen**  
**Corn cob**  
L: 25 W: 19 H: 138 mm  
6 / pack



WG538  
**Pen**  
**Leek**  
L: 38 W: 17 H: 155 mm  
6 / pack



WG539  
**Pen**  
**Garlic**  
L: 31 W: 20 H: 157 mm  
6 / pack



# Clips

The clips are old-fashioned clothes pegs made entirely of wood. Each peg is hand-carved and hand-painted in water-based paint. They have many uses

besides hanging laundry – sealing bags, marking pages, and much more.

**Material:** basswood, water-based acrylic paint, glass.

**Weight:** 6–10 g

WG551  
**Clip**  
**Rabbit**  
L: 19 W: 23 H: 110  
10 / pack



WG552  
**Clip**  
**Badger**  
L: 11 W: 21 H: 104 mm  
10 / pack



WG553  
**Clip**  
**Fox**  
L: 20 W: 24 H: 105 mm  
10 / pack



WG554  
**Clip**  
**Frog**  
L: 22 W: 26 H: 105 mm  
10 / pack



WG555  
**Clip**  
**Owl**  
L: 21 W: 24 H: 105 mm  
10 / pack



WG556  
**Clip**  
**Duck**  
L: 18 W: 27 H: 101 mm  
10 / pack





# Magnets

Our magnet collection features popular butterflies, birds, and animals skilfully hand-carved and painted in water-based paint. The magnetic butterflies are

life-sized. Wrap their enclosed metal wire around an object and attach the butterfly to it as a playful decoration.

**Materials vary by model\*:** basswood, water-based acrylic paint, glass\*, magnet.

**Weight:** 6–9 g



WG591  
**Magnet  
Comma**  
L: 53 W: 15 H: 32 mm  
10 / pack



WG592  
**Magnet  
Peacock**  
L: 52 W: 17 H: 32 mm  
10 / pack



WG593  
**Magnet  
Brimstone**  
L: 35 W: 56 H: 11 mm  
10 / pack



WG594  
**Magnet  
Camberwell Beauty**  
L: 53 W: 16 H: 37 mm  
10 / pack



WG595  
**Magnet  
Holly Blue**  
L: 60 W: 12 H: 36 mm  
10 / pack



WG596  
**Magnet  
Admiral**  
L: 55 W: 17 H: 40 mm  
10 / pack



WG597  
**Magnet  
Swallowtail**  
L: 56 W: 12 H: 37 mm  
10 / pack



WG4598  
**Magnet  
Large White**  
L: 55 W: 12 H: 37 mm  
10 / pack



WG4911  
**Magnet  
Red Fox**  
L: 55 W: 12 H: 48 mm  
10 / pack



WG4912  
**Magnet  
Grey Wolf**  
L: 59 W: 12 H: 57 mm  
10 / pack



WG4913  
**Magnet  
Brown Bear**  
L: 67 W: 12 H: 59 mm  
10 / pack



WG4914  
**Magnet  
Mountain Hare**  
L: 56 W: 12 H: 78 mm  
10 / pack



WG4915  
**Magnet  
Roe Deer**  
L: 59 W: 12 H: 62 mm  
10 / pack



WG4916  
**Magnet  
Lynx**  
L: 54 W: 12 H: 59 mm  
10 / pack



WG4920  
**Magnet  
Bullfinch**  
L: 50 W: 12 H: 50 mm  
10 / pack



WG4921  
**Magnet  
Blackbird**  
L: 51 W: 12 H: 53 mm  
10 / pack



WG4922  
**Magnet  
Goldfinch**  
L: 49 W: 12 H: 52 mm  
10 / pack



WG4923  
**Magnet  
Robin**  
L: 49 W: 12 H: 53 mm  
10 / pack



WG4924  
**Magnet  
Blue Tit**  
L: 50 W: 12 H: 55 mm  
10 / pack



WG4925  
**Magnet  
Great Tit**  
L: 49 W: 12 H: 52 mm  
10 / pack





# Key Cabinets

Create a striking focal point in your hallway with a nature-inspired key cabinet. Each cabinet, crafted in cherrywood, features a playful detail on its door – a hand-carved woodpecker or a chip-carved magpie.

The cabinets have a traditional linseed oil finish, complementing the brass on the hinges. Magnets

keep the doors shut and ensure they open and close smoothly, while a small ledge prevents anything from falling out. Inside, seven pegs organise the keys in two neat rows.

**Materials:** cherrywood, basswood, water-based acrylic paint, glass, brass-plated metal, magnets, linseed oil.

**Weight:** 1 kg



WG5120  
Key Cabinet  
Magpie  
L: 250 W: 197 H: 73 mm  
1 / pack



WG5121  
Key Cabinet  
Woodpecker  
L: 250 W: 197 H: 120 mm  
1 / pack

# Keyrings

The wood-carved keyrings are hand-painted in water-based colours. Here you find nature's shapes in

various expressions inspired by the magical world of animals and plants.

**Material:** basswood, water-based acrylic paint, stainless steel.

**Weight:** 4–10 g



WG4690  
Keyring  
Butterfly  
L: 50 W: 11 H: 77 mm  
10 / pack



WG4691  
Keyring  
Frog  
L: 36 W: 18 H: 99 mm  
10 / pack



WG4693  
Keyring  
Bumblebee  
L: 30 W: 15 H: 87 mm  
10 / pack



WG4694  
Keyring  
Dragonfly  
L: 76 W: 10 H: 95 mm  
10 / pack



WG4696  
Keyring  
Snail  
L: 25 W: 19 H: 92 mm  
10 / pack

# Keyrings



WG4698  
**Keyring  
Acorn**  
L: 23 W: 23 H: 80 mm  
10 / pack



WG4699  
**Keyring  
Hazelnut**  
L: 23 W: 23 H: 72 mm  
10 / pack



WG4700  
**Keyring  
Penny Bun**  
L: 22 W: 22 H: 85 mm  
10 / pack



WG4701  
**Keyring  
Pine Cone**  
L: 22 W: 22 H: 82 mm  
10 / pack



WG4702  
**Keyring  
Rosehip**  
L: 19 W: 19 H: 75 mm  
10 / pack



WG4703  
**Keyring  
Physalis**  
L: 31 W: 31 H: 84 mm  
10 / pack



WG4704  
**Keyring  
Star Anise**  
L: 42 W: 14 H: 89 mm  
10 / pack



WG4705  
**Keyring  
Wheat**  
L: 30 W: 13 H: 122 mm  
10 / pack



WG4706  
**Keyring  
Poppy**  
L: 33 W: 22 H: 74 mm  
10 / pack



WG4707  
**Keyring  
Chanterelle**  
L: 30 W: 30 H: 86 mm  
10 / pack



WG4708  
**Keyring  
Fly Agaric**  
L: 24 W: 24 H: 83 mm  
10 / pack



WG4709  
**Keyring  
Ladybird**  
L: 30 W: 22 H: 78 mm  
10 / pack



WG4720  
**Keyring  
Clownfish**  
L: 33 W: 26 H: 107 mm  
10 / pack



WG4721  
**Keyring  
Scallop**  
L: 42 W: 14 H: 83 mm  
10 / pack



WG4722  
**Keyring  
Sea Turtle**  
L: 35 W: 30 H: 85 mm  
10 / pack



WG4723  
**Keyring  
Conus Shell**  
L: 30 W: 20 H: 96 mm  
10 / pack



WG4724  
**Keyring  
Octopus**  
L: 30 W: 35 H: 90 mm  
10 / pack



WG4725  
**Keyring  
Starfish**  
L: 44 W: 14 H: 85 mm  
10 / pack



WG4726  
**Keyring  
Seahorse**  
L: 30 W: 17 H: 106 mm  
10 / pack



# Wall Hangers

Inspired by garden birds, this collection of wall hangers combines wood and metal in elegant, functional designs. It features a wooden peg rail with a

hand-carved swallow, a double coat hook, and a bird silhouette hanger with familiar species like the robin, blue tit, wren, and blackbird.

**Materials vary by model:** pine wood, water-based acrylic paint, white-pigmented wax oil, or powder-coated steel.

**Weight:** 150–200 g



WG4750  
Peg Rail  
Barn Swallow  
L: 300 W: 70 H: 87mm  
4 / pack



WG7767  
Wall Hanger  
Birds  
L: 96 W: 24 H: 300 mm  
1 / pack



WG7770  
Silhouette Coat Hook  
Blackbird  
L: 145 W: 50 H: 145 mm  
6 / pack

## Bookends & Letter Holder

The playful yet practical letter holders and bookends feature stylised bird motifs. Made from durable lacquered metal, they add character to your interior. The woodpecker bookends and the blackbird letter

holder fit seamlessly on any shelf or desk, and the bookends are available separately for left or right placement.

**Material:** powder-coated steel

**Weight:** 300–400 g



WG7765  
Bookend  
Woodpecker Left  
L: 178 W: 111 H: 153 mm  
1 / pack



WG7766  
Bookend  
Woodpecker Right  
L: 178 W: 111 H: 153 mm  
1 / pack



WG7768  
Letter Rack  
Blackbird  
L: 168 W: 43 H: 158 mm  
4 / pack

# Wooden Boxes

These cherrywood boxes are designed for both function and beauty, perfect for storing jewellery, keys, and other small essentials. Their soft edges and understated form suit any room, from the hallway to

the bedside table. Each piece is hand-carved and finished to age gracefully, its surface catching the light in delicate shadows that reveal the warmth of the wood.

**Materials vary by model\*:** cherrywood, basswood, water-based acrylic paint, glass\*, linseed oil, brass\*.

**Weight:** 220–370 g



WG5101  
**Wooden Box**  
**Squirrel**  
L: 110 W: 110 H: 94 mm  
4 / pack



WG5102  
**Wooden Box**  
**Frog**  
L: 130 W: 130 H: 85 mm  
4 / pack



WG5103  
**Wooden Box**  
**Snail**  
L: 150 W: 150 H: 85 mm  
4 / pack



WG5104  
**Wooden Box**  
**Mallard**  
L: 121 W: 191 H: 85 mm  
4 / pack



WG5105  
**Jewellery Box**  
**Magpie**  
L: 150 W: 150 H: 64 mm  
4 / pack



WG5106  
**Wooden Box**  
**Robin**  
L: 130 W: 130 H: 93 mm  
4 / pack



WG5107  
**Wooden Box**  
**Wren**  
L: 110 W: 110 H: 93 mm  
4 / pack









# Tableware

We design our nature-inspired tableware with care and attention. The playful, intricate, and practical designs create a relaxed and welcoming atmosphere at the dinner table. The collection encompasses

beautiful wood-carved pieces hand-painted in water-based paint and sleek metal items in steel.





# Bottle Coaster

Hand-carved and wood-turned in cherrywood, this bottle coaster protects your table from drips and stains. The raised pattern adds tactile rhythm and visual texture, and the linseed oil finish enhances the wood's warm tone. Fits most bottles – Ø104 mm.

**Material:** cherrywood, linseed oil.

**Weight:** 85 g



WG5060  
Bottle Coaster  
Ripple  
L: 118 W: 118 H: 36 mm  
4 / pack



# Bowls

Wood-turned and chip-carved in cherrywood, each bowl is finished with water-based paint and linseed oil.

Ideal for serving or display, the textured pattern and balanced shape reflect skilled craftsmanship.

**Material:** cherrywood, water-based acrylic paint, linseed oil.

**Weight:** 40–60 g



WG5133  
Bowl Ripple S  
Sand  
L: 114 W: 114 H: 47 mm  
4 / pack



WG5134  
Bowl Ripple S  
Hazelnut  
L: 114 W: 114 H: 47 mm  
4 / pack



WG5135  
Bowl Ripple S  
Willow  
L: 114 W: 114 H: 47 mm  
4 / pack



WG5136  
Bowl Ripple XS  
Sand  
L: 99 W: 99 H: 41 mm  
4 / pack



WG5137  
Bowl Ripple XS  
Hazelnut  
L: 99 W: 99 H: 41 mm  
4 / pack



WG5138  
Bowl Ripple XS  
Willow  
L: 99 W: 99 H: 41 mm  
4 / pack





# Coasters

These cherrywood coasters are wood-turned and chip-carved by hand. Their textured surface adds quiet detail to the table while protecting against heat and

moisture, and each is finished with water-based paint and linseed oil.

**Material:** cherrywood, water-based acrylic paint, linseed oil.

**Weight:** 20 g



WG5200  
Coaster Ripple  
Sand

L: 90 W: 90 H: 7,5 mm  
6 / pack



WG5201  
Coaster Ripple  
Mallow

L: 90 W: 90 H: 7,5 mm  
6 / pack



WG5202  
Coaster Ripple  
Hazelnut

L: 90 W: 90 H: 7,5 mm  
6 / pack



WG5203  
Coaster Ripple  
Willow

L: 90 W: 90 H: 7,5 mm  
6 / pack



WG5204  
Coaster Ripple  
Sky

L: 90 W: 90 H: 7,5 mm  
6 / pack



WG5205  
Coaster Ripple  
Ocean

L: 90 W: 90 H: 7,5 mm  
6 / pack

# Candle Holder

This cherrywood candle holder features a chip-carved pattern inspired by moving water. Its slim design fits beautifully on any table, while the tall glass shade protects the flame from wind. Designed for steady airflow, it lets the candle burn slower, more evenly, and with less flickering. Fits a 20 cm dinner candle or tealight – for use indoors or out.

**Material:** cherrywood, linseed oil, rubber, borosilicate glass, steel, linseed oil.

**Weight:** 268 g



WG5160  
Candle Holder  
Ripple

L: 86 W: 86 H: 240 mm  
4 / pack



# Napkin Rings

Our napkin rings bring character and craftsmanship to the table. Each piece is handmade in wood and carefully detailed – from chip-carved patterns to

hand-carved animal motifs. Whether for festive dinners or everyday meals, they add a natural accent and a touch of artistry to every setting.

**Materials vary by model\*:** basswood/cherrywood, water-based acrylic paint, glass\*, linseed oil\*.

**Weight:** 12–40 g



WG5070  
Napkin Ring  
Ripple – Sand  
L: 47 W: 47 H: 36 mm  
6 / pack



WG5071  
Napkin Ring  
Ripple – Mallow  
L: 47 W: 47 H: 36 mm  
6 / pack



WG5072  
Napkin Ring  
Ripple – Hazelnut  
L: 47 W: 47 H: 36 mm  
6 / pack



WG5073  
Napkin Ring  
Ripple – Willow  
L: 47 W: 47 H: 36 mm  
6 / pack



WG5074  
Napkin Ring  
Ripple – Sky  
L: 47 W: 47 H: 36 mm  
6 / pack



WG5075  
Napkin Ring  
Ripple – Ocean  
L: 47 W: 47 H: 36 mm  
6 / pack



WG5040  
Napkin Ring  
Little Rabbit  
L: 112 W: 26 H: 77 mm  
6 / pack



WG5041  
Napkin Ring  
Little Hedgehog  
L: 112 W: 26 H: 77 mm  
6 / pack



WG5042  
Napkin Ring  
Little Mouse  
L: 112 W: 26 H: 77 mm  
6 / pack



WG5043  
Napkin Ring  
Little Squirrel  
L: 112 W: 26 H: 77 mm  
6 / pack



WG5044  
Napkin Ring  
Little Lynx  
L: 112 W: 26 H: 77 mm  
6 / pack



WG5045  
Napkin Ring  
Little Fox  
L: 112 W: 26 H: 77 mm  
6 / pack



WG4563  
Napkin Ring  
Chick  
L: 90 W: 20 H: 60 mm  
6 / pack



WG4564  
Napkin Ring  
Rabbit  
L: 103 W: 26 H: 71 mm  
6 / pack



WG4565  
Napkin Ring  
Cat  
L: 103 W: 26 H: 64 mm  
6 / pack



WG4566  
Napkin Ring  
Hedgehog  
L: 99 W: 26 H: 56 mm  
6 / pack

# Napkin Rings

**Materials vary by model\*:** basswood/cherrywood, water-based acrylic paint, glass\*, linseed oil\*.

**Weight:** 12–40 g



WG4567  
**Napkin Ring**  
**Mouse**  
L: 96 W: 26 H: 56 mm  
6 / pack



WG4568  
**Napkin Ring**  
**Squirrel**  
L: 88 W: 26 H: 73 mm  
6 / pack



WG4569  
**Napkin Ring**  
**Badger**  
L: 110 W: 26 H: 55 mm  
6 / pack



WG4570  
**Napkin Ring**  
**Chaffinch**  
L: 115 W: 26 H: 68 mm  
6 / pack



WG4571  
**Napkin Ring**  
**Marsh Tit**  
L: 114 W: 25 H: 67 mm  
6 / pack



WG4572  
**Napkin Ring**  
**Common Linnet**  
L: 113 W: 26 H: 67 mm  
6 / pack



WG4573  
**Napkin Ring**  
**Yellowhammer**  
L: 123 W: 25 H: 63 mm  
6 / pack



WG575  
**Napkin Ring**  
**Robin**  
L: 111 W: 26 H: 67 mm  
6 / pack



WG576  
**Napkin Ring**  
**Great Tit**  
L: 111 W: 26 H: 68 mm  
6 / pack



WG577  
**Napkin Ring**  
**Blue Tit**  
L: 109 W: 26 H: 68 mm  
6 / pack



WG578  
**Napkin Ring**  
**Tree Sparrow**  
L: 111 W: 26 H: 67 mm  
6 / pack



WG579  
**Napkin Ring**  
**Goldfinch**  
L: 103 W: 27 H: 66 mm  
6 / pack



WG580  
**Napkin Ring**  
**Crested Tit**  
L: 112 W: 26 H: 77 mm  
6 / pack



# Bottle Openers & Stoppers

Inspired by nature's diversity, this collection of bottle stoppers and openers unites charm and function. The stoppers feature animal and plant motifs, while the waterbird-shaped openers sit comfortably in the hand

with the metal part hidden beneath. Each piece is hand-carved and painted with water-based colours – playful details that bring nature to the table.

**Material:** basswood, water-based acrylic paint, glass\*, cork\*, glue\*, stainless steel\*.

*\*Materials vary between bottle openers and stoppers.*



WG4986  
Bottle Opener  
Black-headed Gull  
L: 140 W: 53 H: 59 mm  
50 g | 4 / pack



WG4987  
Bottle Opener  
Mallard  
L: 127 W: 56 H: 60 mm  
50 g | 4 / pack



WG4988  
Bottle Opener  
Eider Duck  
L: 132 W: 55 H: 62 mm  
50 g | 4 / pack



WG4989  
Bottle Opener  
Eurasian Coot  
L: 130 W: 63 H: 63 mm  
50 g | 4 / pack



WG4990  
Bottle Stopper  
Red Squirrel  
L: 45 W: 30 H: 75 mm  
15 g | 6 / pack



WG4991  
Bottle Stopper  
Mallard  
L: 60 W: 30 H: 60 mm  
15 g | 6 / pack



WG4992  
Bottle Stopper  
Frog  
L: 40 W: 30 H: 60 mm  
15 g | 6 / pack



WG4993  
Bottle Stopper  
Duck  
L: 57 W: 30 H: 68 mm  
15 g | 6 / pack



WG4994  
Bottle Stopper  
Blue Tit  
L: 72 W: 32 H: 77 mm  
15 g | 6 / pack



WG4995  
Bottle Stopper  
Pine Cone  
L: 31 W: 31 H: 79 mm  
15 g | 6 / pack



*Integrated metal opener underneath the bottle openers.*







# Salt & Pepper Mills

Our nature-inspired salt & pepper mill collection enhances your dining experience through their meticulously handcrafted forms. Each mill features

chip-carved decorations on the body, a hand-finished figure on top, and an adjustable, high-quality ceramic grinding mechanism.

**Material:** pine, basswood, water-based acrylic paint, grinding mechanism: ceramic, aluminium, stainless steel, POM, PP, ABS.

**Weight:** 200 g



WG5010  
Salt & Pepper Mill  
Cockatoo Black  
L: 64 W: 64 H: 190 mm  
4 / pack



WG5011  
Salt & Pepper Mill  
Cockatoo White  
L: 64 W: 64 H: 190 mm  
4 / pack



WG5012  
Salt & Pepper Mill  
Toucan Blue  
L: 64 W: 64 H: 190 mm  
4 / pack



WG5013  
Salt & Pepper Mill  
Toucan Orange  
L: 64 W: 64 H: 190 mm  
4 / pack



WG5014  
Salt & Pepper Mill  
Artichoke Green  
L: 64 W: 64 H: 175 mm  
4 / pack



WG5015  
Salt & Pepper Mill  
Artichoke Purple  
L: 64 W: 64 H: 175 mm  
4 / pack



# Kitchen Roll Holders

The kitchen roll holders playfully combine form and function. Atop each solid wood holder sits a wood-carved bird, hand-painted in water-based paints. The

kitchen roll holders come flat packed in three parts. Each pack contains two different-sized centre rods to suit different lengths of kitchen roll.

**Material:** pine, basswood, water-based acrylic paint, rubber, stainless steel, **Weight:** 220 g  
hemp cord, glass.



WG5000  
Kitchen Roll Holder  
Blue Tit  
L: 142 W: 142 H: 310 mm  
4 / pack



WG5001  
Kitchen Roll Holder  
Robin  
L: 142 W: 142 H: 310 mm  
4 / pack



WG5003  
Kitchen Roll Holder  
Cockatoo  
L: 142 W: 142 H: 350 mm  
4 / pack



WG5030  
Kitchen Roll Holder  
Wren  
L: 142 W: 142 H: 310 mm  
4 / pack

# Cake Testers

A cake tester makes it easier to control your cooking and baking. With the tester, you can quickly check if

the potatoes or the cake are ready.

**Material:** basswood, water-based acrylic paint, stainless steel, glue.

**Weight:** 5–10 g



WG5004  
Cake Tester  
Carrot  
L: 207 W: 17 H: 17 mm  
6 / pack



WG5005  
Cake Tester  
Corncob  
L: 207 W: 18 H: 18 mm  
6 / pack



WG5006  
Cake Tester  
Green Bean  
L: 210 W: 20 H: 12 mm  
6 / pack



WG5007  
Cake Tester  
Leek  
L: 210 W: 30 H: 14 mm  
6 / pack



Photo: Mette Ottosson



# Nutcracker

Handcrafted in solid wood, our nutcracker squirrel is both ornamental and functional. The lifelike squirrel can crack nuts up to three centimeters large between its arms.

**Material:** basswood, birch, water-based acrylic paint, glass, metal wire.



WG4996  
Nutcracker  
Squirrel  
L: 75 W: 46 H: 234 mm  
200 g | 1 / pack

# Tablecloth Weights

Our floral tablecloth weights in lacquered steel have a perforated pattern on the front and a powerful magnet on the back. They sit on the tablecloth by placing the

flower on the front and the magnet on the back. Each pack contains four tablecloth weights.

**Material:** powder-coated steel, magnet.

**Weight:** 4 x 96 g (384 g)



WG7761  
Tablecloth Weight  
Dahlia Black  
L: 50 W: 50 H: 9 mm  
6 / pack



WG7762  
Tablecloth Weight  
Daisy White  
L: 50 W: 50 H: 9 mm  
6 / pack



# Home Accessories

Add a personal touch to your home with functional homeware inspired by the natural world. This collection contains iconic favourites, timeless pieces, and harmonious shapes. Each item, regardless of series, reflects a shared Scandinavian design language – even where production methods differ.

Here, handmade birds, cast iron sculptures, and practical items in wood and metal come together to bring joy to everyday life.





53



40



54

# Cabinet Knobs

These wooden cabinet knobs are hand-carved and painted in nature-inspired motifs. From seed pods to forest finds, each one is unique. A refined yet playful

accent for drawers and cabinet doors. Supplied with a screw and spacer and finished with water-based paint.

**Material:** basswood, water-based acrylic paint, nylon, metal screw & washer.

**Weight:** 5 g



WG4760  
**Cabinet Knob**  
**Chanterelle**  
L: 32 W: 32 H: 28 mm  
10 / pack



WG4761  
**Cabinet Knob**  
**Fly Agaric**  
L: 33 W: 32 H: 30 mm  
10 / pack



WG4762  
**Cabinet Knob**  
**Penny Bun**  
L: 34 W: 32 H: 30 mm  
10 / pack



WG4763  
**Cabinet Knob**  
**Pine Cone**  
L: 24 W: 24 H: 35 mm  
10 / pack



WG4764  
**Cabinet Knob**  
**Acorn**  
L: 23 W: 23 H: 32 mm  
10 / pack



WG4765  
**Cabinet Knob**  
**Star Anise**  
L: 41 W: 41 H: 19 mm  
10 / pack



WG4766  
**Cabinet Knob**  
**Artichoke Green**  
L: 30 W: 30 H: 30 mm  
10 / pack



WG4767  
**Cabinet Knob**  
**Poppy Pod**  
L: 32 W: 32 H: 29 mm  
10 / pack



WG4768  
**Cabinet Knob**  
**White Poppy**  
L: 42 W: 34 H: 21 mm  
10 / pack



WG4769  
**Cabinet Knob**  
**Chocolate Cosmos**  
L: 40 W: 39 H: 20 mm  
10 / pack



# Diffuser

An eagle-owl, hand-carved from red cedar wood, guards the clothes in your wardrobe. Inside the owl is a diffuser filled with cedar oil that disperses a refreshing scent. Hang the owl from a clothes hanger

using the leather cord at the top of the owl's head. When the cedar oil runs out, replenish it with the 10 ml refill bottle.

**Material:** red cedar, glass, leather, bamboo, cedar wood virginia oil, plastic lid.

**Weight:** 85 g



WG4601  
Diffuser  
Cedar Eagle-owl  
L: 55 W: 58 H: 82 mm  
4 / pack

WG9910  
Cedar Oil Refill 10 ml



# Wood-carved Animals

These wood-carved animals make charming decorations for the living room or conservatory. Each represents a well-known garden visitor, hand-painted

in water-based colours. As each piece is handmade and unique, slight variations may occur.

**Material:** basswood, water-based acrylic paint, glass.



WG5941  
**Wood-carved Animal**  
**European Rabbit**  
L: 160 W: 85 H: 190 mm  
260 g | 1 / pack



WG5942  
**Wood-carved Animal**  
**Red Squirrel**  
L: 150 W: 77 H: 180 mm  
250 g | 1 / pack



WG5943  
**Wood-carved Animal**  
**European Mole**  
L: 110 W: 90 H: 40 mm  
57 g | 6 / pack



WG5944  
**Wood-carved Animal**  
**Moor Frog**  
L: 76 W: 45 H: 44 mm  
27 g | 4 / pack



WG5945  
**Wood-carved Animal**  
**Mouse**  
L: 74 W: 38 H: 45 mm  
23 g | 4 / pack



WG5946  
**Wood-carved Animal**  
**Hedgehog**  
L: 174 W: 89 H: 90 mm  
380 g | 1 / pack



WG5947  
**Wood-carved Animal**  
**Rabbit Kit**  
L: 92 W: 48 H: 65 mm  
55 g | 4 / pack



# Silhouettes

The silhouettes feature stylised animals crafted from black metal. They make eye-catching design accents, adding a playful touch indoors or outdoors. Attach them to fences, roofs, or railings – or place them on the lawn or in a flowerbed.

**Material:** powder-coated metal.

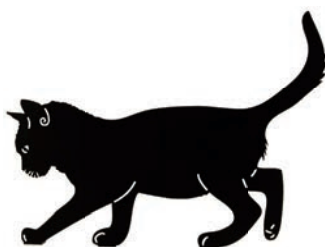
Some models (WG704–WG706) can stand independently, while others include footrests that allow them to stand freely. To make WG750 and WG751 stand, fasten them to a surface using screws or pegs.



WG704  
Silhouette  
Blue Tit  
L: 88 W: 20 H: 82 mm  
63 g | 4 / pack



WG706  
Silhouette  
Little Owl  
L: 122 W: 20 H: 174 mm  
187 g | 4 / pack



WG750  
Silhouette  
Balancing Cat  
L: 377 W: 23 H: 271 mm  
470 g | 4 / pack



WG751  
Silhouette  
Standing Puppy  
L: 238 W: 20 H: 300 mm  
500 g | 4 / pack



WG752  
Silhouette  
Sitting Rabbit  
L: 161 W: 40 H: 203 mm  
280 g | 4 / pack



WG753  
Silhouette  
Hedgehog  
L: 153 W: 40 H: 120 mm  
136 g | 4 / pack



WG754  
Silhouette  
Eating Squirrel  
L: 191 W: 20 H: 160 mm  
250 g | 4 / pack



WG757  
Silhouette  
Rooster  
L: 262 W: 20 H: 306 mm  
395 g | 4 / pack



WG758  
Silhouette  
Observing Hen  
L: 241 W: 22 H: 286 mm  
410 g | 4 / pack

# Cast Iron Sculptures

Wildlife Garden's series of cast-iron figurines is a lifelike collection of various birds. Place the sculptures

indoors or outdoors. Over time, those displayed outside will develop a rustic patina.

**Material:** black-painted cast iron.



WG714  
Cast Iron Sculpture  
Owl

L: 100 W: 77 H: 186 mm  
1.8 kg | 4 / pack



WG715  
Cast Iron Sculpture  
Raven

L: 290 W: 90 H: 234 mm  
4 kg | 2 / pack



WG7728  
Cast Iron Sculpture  
Kestrel

L: 180 W: 79 H: 232 mm  
2.8 kg | 2 / pack



WG712  
Cast Iron Sculpture  
Blackbird

L: 160 W: 52 H: 101 mm  
0.6 kg | 4 / pack



WG716  
Cast Iron Sculpture  
Sparrow Chick

L: 85 W: 43 H: 48 mm  
0.2 kg | 6 / pack



WG725  
Cast Iron Sculpture  
Sparrow Sitting

L: 97 W: 48 H: 91 mm  
0.3 kg | 6 / pack



WG726  
Cast Iron Sculpture  
Sparrow Standing

L: 128 W: 49 H: 81 mm  
0.3 kg | 6 / pack



WG727  
Cast Iron Sculpture  
Sparrow Eating

L: 121 W: 47 H: 69 mm  
0.4 kg | 6 / pack



# DecoBird—Wood-carved Birds

DecoBird is a beloved and ever-expanding series of wooden birds, each hand-carved and painted in water-based colours. Created in collaboration with ornithologists, designers, and skilled craftspeople, every model is based on a real species – carefully shaped to capture its distinctive character.

The birds are cherished by collectors, appreciated as thoughtful gifts, and featured in nature-inspired homes. Even schools use them to support learning and bring the natural world into the classroom. Each bird comes

with a species booklet that covers its appearance, behaviour, and distribution. Designed for indoor use, DecoBirds come packaged according to size: large birds in classic cartons and smaller ones in windowed display boxes. A small circle beside each bird shows its native range – use the map key to see where it lives in the wild.

**Material:** basswood, water-based acrylic paint, glass, metal wire, hemp twine. | **Weight:** 20–860 g

- Europe.....▲
- Asia.....●
- Africa.....+
- Australia.....▼
- North America.....×
- South America.....●
- Worldwide.....○



WG401  
DecoBird – Europe  
Great Tit  
*Parus major*  
L: 114 W: 48 H: 92 mm  
6 / pack



WG402  
DecoBird – Europe  
Blue Tit  
*Cyanistes caeruleus*  
L: 88 W: 48 H: 82 mm  
6 / pack



WG403  
DecoBird – Europe  
Marsh Tit  
*Poecile palustris*  
L: 106 W: 48 H: 92 mm  
6 / pack



WG4404  
DecoBird – Europe  
Robin  
*Erithacus rubecula*  
L: 124 W: 49 H: 88 mm  
6 / pack



WG4405  
DecoBird – Europe  
Pied Wagtail  
*Motacilla alba*  
L: 126 W: 48 H: 96 mm  
6 / pack



WG406  
DecoBird – Europe  
Goldfinch  
*Carduelis carduelis*  
L: 112 W: 49 H: 89 mm  
6 / pack



WG407  
DecoBird – Europe  
Greenfinch  
*Chloris chloris*  
L: 128 W: 47 H: 98 mm  
6 / pack



WG408  
DecoBird – Europe  
Tree Sparrow  
*Passer montanus*  
L: 132 W: 49 H: 88 mm  
6 / pack



# DecoBird—Wood-carved Birds

**Material:** basswood, water-based acrylic paint, glass, metal wire, hemp twine.

**Weight:** 20–860 g



WG410  
DecoBird – Europe  
Nuthatch  
*Sitta europaea*  
L: 133 W: 48 H: 90 mm  
6 / pack



WG413  
DecoBird – Europe  
Wren  
*Troglodytes troglodytes*  
L: 70 W: 48 H: 83 mm  
6 / pack



WG414  
DecoBird – Europe  
Dipper  
*Cinclus cinclus*  
L: 134 W: 46 H: 93 mm  
6 / pack



WG4415  
DecoBird – Europe  
Pied Flycatcher  
*Ficedula hypoleuca*  
L: 126 W: 49 H: 83 mm  
6 / pack



WG416  
DecoBird – Europe  
Chaffinch  
*Fringilla coelebs*  
L: 119 W: 49 H: 102 mm  
6 / pack



WG4417  
DecoBird – Europe  
Redstart  
*Phoenicurus phoenicurus*  
L: 127 W: 48 H: 87 mm  
6 / pack



WG419  
DecoBird – Europe  
Yellowhammer  
*Emberiza citrinella*  
L: 123 W: 49 H: 88 mm  
6 / pack



WG420  
DecoBird – Europe  
Long-tailed Tit  
*Aegithalos caudatus*  
L: 120 W: 48 H: 76 mm  
6 / pack



WG423  
DecoBird – Europe  
Eurasian Siskin  
*Spinus spinus*  
L: 87 W: 48 H: 74 mm  
6 / pack



WG425  
DecoBird – Europe  
Goldcrest  
*Regulus regulus*  
L: 111 W: 49 H: 80 mm  
6 / pack



WG426  
DecoBird – Europe  
Common Linnet  
*Linaria cannabina*  
L: 134 W: 48 H: 98 mm  
6 / pack



WG427  
DecoBird – Europe  
Dunnock  
*Prunella modularis*  
L: 127 W: 49 H: 94 mm  
6 / pack



WG428  
DecoBird – Europe  
Crested Tit  
*Lophophanes cristatus*  
L: 98 W: 49 H: 100 mm  
6 / pack



WG429  
DecoBird – Europe  
House Sparrow Chick  
*Passer domesticus*  
L: 92 W: 48 H: 45 mm  
6 / pack



WG431  
DecoBird – Europe  
Brambling  
*Fringilla montifringilla*  
L: 133 W: 48 H: 101 mm  
6 / pack



WG432  
DecoBird – Europe  
Chiffchaff  
*Phylloscopus collybita*  
L: 119 W: 49 H: 102 mm  
6 / pack







WG433  
DecoBird – Europe  
Bluethroat  
*Luscinia svecica*  
L: 121 W: 48 H: 91 mm  
6 / pack



WG434  
DecoBird – Europe  
House Sparrow  
*Passer domesticus*  
L: 130 W: 48 H: 91 mm  
6 / pack



WG435  
DecoBird – Europe  
Redpoll  
*Acanthis flammea*  
L: 112 W: 49 H: 85 mm  
6 / pack



WG436  
DecoBird – Europe  
Blackcap  
*Sylvia atricapilla*  
L: 128 W: 45 H: 98 mm  
6 / pack



WG4439  
DecoBird – Europe  
Northern Wheatear  
*Oenanthe oenanthe*  
L: 117 W: 49 H: 102 mm  
6 / pack



WG4443  
DecoBird – Europe  
Common Treecreeper  
*Certhia familiaris*  
L: 100 W: 40 H: 130 mm  
6 / pack



WG467  
DecoBird – Europe  
Mallard Duckling  
*Anas platyrhynchos*  
L: 96 W: 49 H: 43 mm  
6 / pack



WG4477  
DecoBird – Europe  
Perky Chick  
*Gallus gallus domesticus*  
L: 80 W: 45 H: 80 mm  
6 / pack



WG4478  
DecoBird – Europe  
Pecking Chick  
*Gallus gallus domesticus*  
L: 85 W: 43 H: 78 mm  
6 / pack



WG4479  
DecoBird – Europe  
Curious Chick  
*Gallus gallus domesticus*  
L: 73 W: 47 H: 72 mm  
6 / pack



WG4440  
DecoBird – Europe  
Thrush Nightingale  
*Luscinia luscinia*  
L: 134 W: 48 H: 98 mm  
6 / pack



WG4485  
DecoBird – Europe  
Grey Wagtail  
*Motacilla cinerea*  
L: 133 W: 41 H: 102 mm  
6 / pack



WG660  
DecoBird – N America  
Black-capped Chickadee  
*Parus atricapillus*  
L: 111 W: 49 H: 91 mm  
6 / pack



WG662  
DecoBird – N America  
American Goldfinch  
*Spinus tristis*  
L: 116 W: 49 H: 87 mm  
6 / pack



WG663  
DecoBird – N America  
House Finch  
*Haemorhous mexicanus*  
L: 118 W: 48 H: 91 mm  
6 / pack



WG668  
DecoBird – N America  
Pine Siskin  
*Spinus spinus*  
L: 118 W: 49 H: 89 mm  
6 / pack



# DecoBird—Wood-carved Birds

**Material:** basswood, water-based acrylic paint, glass, metal wire, hemp twine.

**Weight:** 20–860 g



WG4670  
DecoBird – N America  
Yellow-rumped Warbler  
*Setophaga coronata*  
L: 123 W: 49 H: 88 mm  
6 / pack



WG4676  
DecoBird – N America  
Common Yellowthroat  
*Geothlypis trichas*  
L: 115 W: 48 H: 95 mm  
6 / pack



WG4803  
DecoBird – Australia  
Red-browed Finch  
*Neochmia temporalis*  
L: 113 W: 49 H: 88 mm  
6 / pack



WG4804  
DecoBird – Australia  
Spotted Pardalote  
*Pardalotus punctatus*  
L: 80 W: 49 H: 83 mm  
6 / pack



WG4805  
DecoBird – Australia  
Superb Fairywren  
*Malurus cyaneus*  
L: 74 W: 49 H: 120 mm  
6 / pack



WG4811  
DecoBird – Australia  
Silvereye  
*Zosterops lateralis*  
L: 109 W: 48 H: 78 mm  
6 / pack



WG4812  
DecoBird – Australia  
Diamond Firetail  
*Stagonopleura guttata*  
L: 110 W: 50 H: 95mm  
6 / pack



WG4813  
DecoBird – Australia  
Pink Robin  
*Petroica rodinogaster*  
L: 105 W: 47 H: 90 mm  
6 / pack



WG4814  
DecoBird–Australia  
Gouldian Finch  
*Erythrura gouldiae*  
L: 117 W: 47 H: 100 mm  
6 / pack



WG4409  
DecoBird – Europe  
Bullfinch  
*Pyrrhula pyrrhula*  
L: 137 W: 54 H: 105 mm  
4 / pack



WG411  
DecoBird – Europe  
Blackbird  
*Turdus merula*  
L: 159 W: 53 H: 115 mm  
4 / pack



WG412  
DecoBird – Europe  
Starling  
*Sturnus vulgaris*  
L: 165 W: 53 H: 106 mm  
4 / pack



WG418  
DecoBird – Europe  
Bohemian Waxwing  
*Bombycilla garrulus*  
L: 135 H: 54 W: 115 mm  
4 / pack



WG424  
DecoBird – Europe  
Hawfinch  
*Coccothraustes coccothraustes*  
L: 144 W: 54 H: 115 mm  
4 / pack



WG437  
DecoBird – Europe  
Song Thrush  
*Turdus philomelos*  
L: 165 W: 50 H: 120 mm  
4 / pack



WG4438  
DecoBird – Europe  
Barn Swallow  
*Hirundo rustica*  
L: 144 W: 50 H: 91 mm  
4 / pack







WG4444  
DecoBird – Europe  
Red Crossbill  
*Loxia curvirostra*  
L: 130 W: 50 H: 100 mm  
4 / pack



WG4447  
DecoBird – Europe  
Red-backed Shrike  
*Lanius collurio*  
L: 162 W: 54 H: 103 mm  
4 / pack



WG4449  
DecoBird – Europe  
Little Ringed Plover  
*Charadrius dubius*  
L: 126 W: 57 H: 105 mm  
4 / pack



WG4454  
DecoBird – Europe  
Kingfisher  
*Alcedo atthis*  
L: 117 W: 51 H: 120 mm  
4 / pack



WG657  
DecoBird – N America  
Northern Cardinal  
*Cardinalis cardinalis*  
L: 161 W: 53 H: 109 mm  
4 / pack



WG661  
DecoBird – N America  
Tufted Titmouse  
*Baeolophus bicolor*  
L: 136 W: 53 H: 120 mm  
4 / pack



WG664  
DecoBird – N America  
Eastern Bluebird  
*Sialia sialis*  
L: 155 W: 53 H: 113 mm  
4 / pack



WG665  
DecoBird – N America  
American Robin  
*Turdus migratorius*  
L: 175 W: 53 H: 120 mm  
4 / pack



WG4671  
DecoBird – N America  
Baltimore Oriole  
*Icterus galbula*  
L: 145 W: 55 H: 110 mm  
4 / pack



WG4678  
DecoBird – N America  
Scarlet Tanager  
*Piranga olivacea*  
L: 149 W: 52 H: 94 mm  
4 / pack



WG4679  
DecoBird – N America  
Western Tanager  
*Piranga ludoviciana*  
L: 140 W: 52 H: 100 mm  
4 / pack



WG4680  
DecoBird – N America  
Mountain Bluebird  
*Sialia currucoides*  
L: 140 W: 54 H: 109 mm  
4 / pack



WG4801  
DecoBird – Australia  
Eastern Yellow Robin  
*Eopsaltria australis*  
L: 155 W: 53 H: 100 mm  
4 / pack



WG4806  
DecoBird – Australia  
New Holland Honeyeater  
*Phylidonyris novaehollandiae*  
L: 174 W: 53 H: 111 mm  
4 / pack



WG4808  
DecoBird – Australia  
Grey Fantail  
*Rhipidura albiscapa*  
L: 155 W: 49 H: 93 mm  
4 / pack



WG4810  
DecoBird – Australia  
Budgerigar  
*Melopsittacus undulatus*  
L: 155 W: 52 H: 151 mm  
4 / pack







# DecoBird—Wood-carved Birds

**Material:** basswood, water-based acrylic paint, glass, metal wire, hemp twine.

**Weight:** 20–860 g



WG4450

**DecoBird – Europe  
Eurasian Woodcock**

*Scolopax rusticola*

L: 218 W: 61 H: 125 mm

1/ pack



WG451

**DecoBird – Europe  
Great Spotted Woodpecker**

*Dendrocopos major*

L: 142 W: 63 H: 222 mm

1/ pack



WG452

**DecoBird – Europe  
Green Woodpecker**

*Picus viridis*

L: 165 W: 66 H: 242 mm

1/ pack



WG4453

**DecoBird – Europe  
Common Cuckoo**

*Cuculus canorus*

L: 180 W: 70 H: 176 mm

1/ pack



WG455

**DecoBird – Europe  
Little Owl**

*Athene noctua*

L: 75 W: 115 H: 181 mm

1/ pack



WG4456

**DecoBird – Europe  
Magpie**

*Pica pica*

L: 334 W: 67 H: 164 mm

1/ pack



WG457

**DecoBird – Europe  
Mallard Drake**

*Anas platyrhynchos*

L: 248 W: 101 H: 121 mm

1/ pack



WG458

**DecoBird – Europe  
Eider Duck**

*Somateria mollissima*

L: 277 W: 101 H: 124 mm

1/ pack



WG459

**DecoBird – Europe  
Oystercatcher**

*Haematopus ostralegus*

L: 258 W: 71 H: 158 mm

1/ pack



WG460

**DecoBird – Europe  
Black-headed Gull**

*Chroicocephalus ridibundus*

L: 237 W: 72 H: 160 mm

1/ pack



WG462

**DecoBird – Europe  
Merlin**

*Falco columbarius*

L: 205 W: 78 H: 209 mm

1/ pack



WG4463

**DecoBird – Europe  
Jay**

*Garrulus glandarius*

L: 221 W: 68 H: 150 mm

1/ pack



WG464

**DecoBird – Europe  
Jackdaw**

*Corvus monedula*

L: 215 W: 61 H: 165 mm

1/ pack



WG465

**DecoBird – Europe  
Peregrine Falcon**

*Falco peregrinus*

L: 225 W: 99 H: 310 mm

1/ pack



WG466

**DecoBird – Europe  
Raven**

*Corvus corax*

L: 325 W: 94 H: 260 mm

1/ pack



WG468

**DecoBird – Europe  
Mallard Hen**

*Anas platyrhynchos*

L: 254 W: 100 H: 87 mm

1/ pack







WG469  
DecoBird – Europe  
White Stork  
*Ciconia ciconia*  
L: 160 W: 65 H: 213 mm  
1/pack



WG4470  
DecoBird – Europe  
Common Kestrel  
*Falco tinnunculus*  
L: 208 W: 81 H: 238 mm  
1/pack



WG4471  
DecoBird – Europe  
Golden Oriole  
*Oriolus oriolus*  
L: 218 W: 61 H: 125 mm  
1/pack



WG4472  
DecoBird – Europe  
Eurasian Hoopoe  
*Upupa epops*  
L: 240 W: 63 H: 155 mm  
1/pack



WG4473  
DecoBird – Europe  
Eurasian Coot  
*Fulica atra*  
L: 212 W: 105 H: 92 mm  
1/pack



WG4474  
DecoBird – Europe  
Eurasian Teal  
*Anas crecca*  
L: 235 W: 80 H: 85 mm  
1/pack



WG4475  
DecoBird – Europe  
European Bee-eater  
*Merops apiaster*  
L: 215 W: 55 H: 123 mm  
1/pack



WG4476  
DecoBird – Europe  
Atlantic Puffin  
*Fratercula arctica*  
L: 175 W: 83 H: 172 mm  
1/pack



WG4480  
DecoBird – Europe  
Long-eared Owl  
*Asio otus*  
L: 140 W: 98 H: 235 mm  
1/pack



WG4481  
DecoBird – Europe  
Mandarin Duck  
*Aix galericulata*  
L: 225 W: 96 H: 89 mm  
1/pack



WG666  
DecoBird – N America  
Blue Jay  
*Cyanocitta cristata*  
L: 236 W: 60 H: 141 mm  
1/pack



WG4677  
DecoBird – N America  
Northern Flicker  
*Colaptes auratus*  
L: 135 W: 62 H: 245 mm  
1/pack



WG4800  
DecoBird – Australia  
Rainbow Lorikeet  
*Trichoglossus moluccanus*  
L: 117 W: 70 H: 262 mm  
1/pack



WG4802  
DecoBird – Australia  
Laughing Kookaburra  
*Dacelo novaeguineae*  
L: 137 W: 74 H: 223 mm  
1/pack



WG4807  
DecoBird – Australia  
Eastern Rosella  
*Platycercus eximius*  
L: 258 W: 66 H: 164 mm  
1/pack



WG4815  
DecoBird – Australia  
Australian Magpie  
*Gymnorhina tibicen*  
L: 290 W: 97 H: 230 mm  
1/pack



# DecoBird—Wood-carved Birds

**Material:** basswood, water-based acrylic paint, glass, steel, hemp twine.

**Weight:** 20–860 g



WG421  
DecoBird – Europe  
House Martin  
*Delichon urbicum*  
L: 132 W: 143 H: 30 mm  
4 / pack



WG422  
DecoBird – Europe  
Common Swift  
*Apus apus*  
L: 129 W: 275 H: 36 mm  
1 / pack



WG441  
DecoBird – Europe  
Flying Blue Tit  
*Cyanistes caeruleus*  
L: 96 W: 135 H: 78 mm  
4 / pack



WG4442  
DecoBird – Europe  
Flying Goldfinch  
*Carduelis carduelis*  
L: 105 W: 120 H: 75 mm  
4 / pack



WG4445  
DecoBird – Europe  
Flying Redstart  
*Phoenicurus phoenicurus*  
L: 124 W: 120 H: 70 mm  
4 / pack



WG4446  
DecoBird – Europe  
Flying Skylark  
*Alauda arvensis*  
L: 125 W: 134 H: 52 mm  
4 / pack



WG4448  
DecoBird – Europe  
Flying Barn Swallow  
*Hirundo rustica*  
L: 230 W: 160 H: 35 mm  
1 / pack



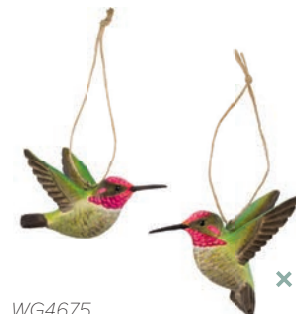
WG4672  
DecoBird – S America  
Black-chinned Hummingbird  
*Archilochus alexandri*  
L: 80-90 W: 30-40 H: 56 mm  
6 / pack



WG4673  
DecoBird – S America  
Rufous Hummingbird  
*Selasphorus rufus*  
L: 80-90 W: 30-40 H: 56 mm  
6 / pack



WG4674  
DecoBird – S America  
Broad-billed Hummingbird  
*Cynanthus latirostris*  
L: 80-90 W: 30-40 H: 56 mm  
6 / pack



WG4675  
DecoBird – S America  
Anna's Hummingbird  
*Calypte anna*  
L: 80-90 W: 30-40 H: 56 mm  
6 / pack





# Doorstops & Shoehorns

Our charming doorstops and shoehorns combine functionality with beautiful design, turning these everyday items into small works of art.

The wood-carved doorstops feature detailed animal motifs and are perfect for propping a door open. The shoehorns, featuring bird motifs, come in hand-carved wood or metal, adding practicality and personality to the hallway.

**Materials vary by model\*:** basswood, water-based acrylic paint, glass, silicone\*, leather, steel\*; powder-coated steel.



WG584  
**Doorstop**  
**Moor Frog**  
L: 175 W: 45 H: 51 mm  
78 g | 4 / pack



WG585  
**Doorstop**  
**Roman Snail**  
L: 166 W: 45 H: 51 mm  
58 g | 4 / pack



WG586  
**Doorstop**  
**Wood Mouse**  
L: 159 W: 45 H: 43 mm  
74 g | 4 / pack



WG587  
**Doorstop**  
**Wren**  
L: 173 W: 45 H: 54 mm  
53 g | 4 / pack



WG588  
**Doorstop**  
**Mallard Duckling**  
L: 175 W: 45 H: 56 mm  
86 g | 4 / pack



WG4997  
**Shoehorn**  
**Woodpecker**  
L: 75 W: 41 H: 228 mm  
93 g | 4 / pack



WG4998  
**Shoehorn**  
**Merlin**  
L: 69 W: 41 H: 230 mm  
93 g | 4 / pack



WG4999  
**Shoehorn**  
**Northern Cardinal**  
L: 69 W: 41 H: 223 mm  
93 g | 4 / pack



WG7769  
**Metal Shoehorn**  
**Owl**  
L: 15 W: 50 H: 500 mm  
311 g | 4 / pack



# Nests & Feeders

Our collections of architectural nests and feeders attract wildlife to the garden. All design work and production processes occur in collaboration with ornithologists and experts, resulting in products adapted to the guests' needs. The feeders prioritise hygiene to prevent diseases from spreading between

the birds, and the nests have a range of adaptations to ensure that the inhabitants thrive.

The whole collection features materials that are stylish, functional and weatherproof.





59



62



60



# Multiholk

Be inspired by our lively assortment of dream homes for your feathery friends. The iconic Multiholk's clever design means it's usable year-round. During the colder months, the Multiholk is a bird feeder, and it transforms into a nest during the spring. You effortlessly change its use from feeder to nest by opening the entrance hole and inserting the base plate.

Multiholk is well-thought-out, with creative solutions and a playful design. Grooves below the inside of the entrance hole ensure the fledglings can climb out of

the nest. And the material selection and ventilation holes help maintain the correct temperature during hot and cold days.

Multiholk is part of an ever-growing product family with classic, modern and countryside houses. All houses have decorative details that enhance their style.

## *The Multiholk's Parts*

*A. Roof*



*C*



*F*



*B. House body*



*D*



*G*



*C. Base plate*

*D. Bracket*

*E. Instruction booklet*

*E*



*F. Wooden perches*

*H*



*G. Screws*

*H. Roof pins*

*B*



WG101  
Multiholk  
Red Cottage  
L: 194 W: 184 H: 250 mm  
4 / pack



WG103  
Multiholk  
White & Blue Cottage  
L: 194 W: 184 H: 250 mm  
4 / pack



WG104  
Multiholk  
Yellow Cottage  
L: 194 W: 184 H: 250 mm  
4 / pack



WG106  
Multiholk  
Black Cottage  
L: 194 W: 184 H: 250 mm  
4 / pack



# Multiholk



WG107  
Multiholk  
Green Cottage  
L: 194 W: 184 H: 250 mm  
4 / pack



WG109  
Multiholk  
Half-timbered Black Cottage  
L: 194 W: 184 H: 250 mm  
4 / pack



WG112  
Multiholk  
Modern Nordic  
L: 180 W: 194 H: 250 mm  
4 / pack



WG113  
Multiholk  
Brick Cottage  
L: 189 W: 194 H: 250 mm  
4 / pack



WG118  
Multiholk  
Blue Cottage  
L: 194 W: 184 H: 250 mm  
4 / pack



WG119  
Multiholk  
Grey Cottage  
L: 194 W: 184 H: 250 mm  
4 / pack



WG122  
Multiholk  
New England  
L: 194 W: 184 H: 250 mm  
4 / pack



WG108  
Multiholk  
Functional House  
L: 170 W: 180 H: 229 mm  
4 / pack



WG1124  
Multiholk  
De Stijl  
L: 184 W: 194 H: 229 mm  
4 / pack



WG1125  
Multiholk  
Red Earth  
L: 194 W: 184 H: 250 mm  
4 / pack



WG1126  
Multiholk  
Green Umber  
L: 194 W: 184 H: 250 mm  
4 / pack



WG1127  
Multiholk  
Carbon Black  
L: 194 W: 184 H: 250 mm  
4 / pack



WG215  
Multiholk  
Mountain Cottage  
L: 270 W: 192 H: 267 mm  
4 / pack

**Material:** pine, plywood, water-based acrylic paint, stainless steel, brass-plated zinc alloy.

**Weight:** 1,0 kg | **Capacity:** 2 litres of feed.

**Accessories:** bracket, screws, wooden perches.

# Multifeeder Barn

The Multifeeder Barn has several interior compartments to fill with different types of birdfeed. Offering a greater variety of feed attracts a greater variety of birds. Try peanuts, sunflower seeds, suet balls or even seed mixtures. The interior

compartments protect the feed from the elements. And, as the small birds land to eat, they too are kept dry. The barn's narrow ledges make it difficult for larger birds to land and scare away the small birds.

**Material:** pine, plywood, water-based acrylic paint, powder-coated metal, stainless steel, brass-plated zinc alloy.

**Weight:** 1.8 kg | **Capacity:** ca 5 litres of feed.

**Accessories:** screws, wooden perches, mounting plate.



WG220  
Multifeeder Barn  
Brown  
L: 241 W: 317 H: 210 mm  
4 / pack



WG221  
Multifeeder Barn  
Red  
L: 241 W: 317 H: 210 mm  
4 / pack

# Bird Feeder with Bath

Create movement and life in your garden with a stylish house with a built-in bird pool. With its clever design, the house will attract different bird species all year round. The pool will be a place for garden birds to quench their thirst, wash and frolic.

The bird feeder is made of wood. The roof with the built-in pool consists of weather- and frost-resistant plastic.

**Materials vary by batch:** plywood, fir, water-based acrylic paint\*, PU paint\*, PP plastic, brass-plated zinc alloy, stainless steel, powder-coated metal.

**Weight:** 1.1 kg | **Capacity:** 2.5 l of seeds.

**Accessories:** screws, metal perches.



WG352  
Bird Feeder with Bath  
Red House  
L: 171 W: 241 H: 207 mm  
4 / pack



WG355  
Bird Feeder with Bath  
Black House  
L: 171 W: 241 H: 207 mm  
4 / pack



WG356  
Bird Feeder with Bath  
Grey House  
L: 171 W: 241 H: 207 mm  
4 / pack



# Metal Cottage Feeders

Shaped like small cottages, these hanging bird feeders have a clever design. The mesh gives the

best grip possible while minimising the risk of diseases spreading between the birds.

**Material:** powder-coated metal, stainless steel, metal wire.

**Accessories:** metal wire

**Weight:** 0,3 kg | **Capacity:** approximately 6 suet balls / 1,2 l peanuts.



WG3343  
Suet Ball Feeder Cottage  
Black  
L: 125 W: 154 H: 137 mm  
4 / pack



WG3344  
Suet Ball Feeder Cottage  
Red  
L: 125 W: 154 H: 137 mm  
4 / pack



WG3345  
Peanut Feeder Cottage  
Black  
L: 125 W: 154 H: 137 mm  
4 / pack



WG3346  
Peanut Feeder Cottage  
Red  
L: 125 W: 154 H: 137 mm  
4 / pack

# Suet Ball Feeder Star

The star is easy to refill, and its bars are just the right thickness for birds to be able to perch on. Hang it on a

tree, bush or balcony using the accompanying wire.

**Material:** powder-coated metal, stainless steel; glass.

**Weight:** 100 g | **Accessories:** metal wire



WG3329  
Star  
Black  
L: 147 W: 147 H: 160 mm  
12 / pack



WG3330  
Star  
Red Earth  
L: 147 W: 147 H: 160 mm  
12 / pack



WG3331  
Star  
White  
L: 147 W: 147 H: 160 mm  
12 / pack



WG3332  
Tealight Holder Glass  
50 x 55 mm  
12 / pack

# Giant Feeder

Holding six litres of seed, the Giant Feeder only needs filling occasionally. Its recyclable plastic insert, which contains the birdseed, is easy to remove for cleaning. Larger birds find it difficult to land on the perching

ring, meaning that small birds can enjoy their meals in peace. The Giant Feeder has six feeding windows, allowing many birds to feed at the same time.

**Material:** powder-coated steel sheet, metal wire, MABS plastic.

**Weight:** 1.8 kg | **Capacity:** 6 l | **Accessories:** screws.



WG326  
Giant Feeder  
Black  
L: 220 W: 220 H: 413 mm  
4 / pack



WG327  
Giant Feeder  
Green  
L: 220 W: 220 H: 413 mm  
4 / pack



WG328  
Giant Feeder  
White  
L: 220 W: 220 H: 413 mm  
4 / pack

# Combi Feeder Seeds

Combi Feeder Seeds is a hanging seed dispenser. Its design, with a plastic insert and feeding windows, lends itself to different seed mixes. The Combi Feeder

also works as a suet ball or apple feeder. Remove the plastic insert and fill it with apples or suet balls.

**Material:** powder-coated steel, metal wire, MABS plastic. | **Weight:** 0.4 kg

**Capacity:** 1.2 l | **Accessories:** short and long perches, wire.



WG337  
Combi Feeder Seeds  
Black  
L: 178 W: 178 H: 282 mm  
9 / pack



WG338  
Combi Feeder Seeds  
Green  
L: 178 W: 178 H: 282 mm  
9 / pack



WG339  
Combi Feeder Seeds  
Red  
L: 178 W: 178 H: 282 mm  
9 / pack



WG340  
Combi Feeder Seeds  
White  
L: 178 W: 178 H: 282 mm  
9 / pack



# For Pollinators and Other Garden Visitors

To support local wildlife, we've collaborated with experts to create homes for bees, butterflies, and bats, who struggle to find nesting places in our urban areas.

We've also designed a squirrel feeder to help keep them fed and steer them away from the bird feeders.

**Materials vary by model:** pine, bamboo\*, plexiglass\*, water-based acrylic paint, stainless steel, brass-plated zinc alloy.



WG300  
**Butterfly Hibernation Box  
Red**  
L: 160 W: 157 H: 209 mm  
560 g | 4 / pack



WG303  
**Butterfly Hibernation Box  
Yellow**  
L: 160 W: 157 H: 209 mm  
560 g | 4 / pack



WG306  
**Bat Castle**  
L: 215 W: 98 H: 277 mm  
900 g | 4 / pack



WG311  
**Bee Nest  
Red**  
L: 160 W: 155 H: 212 mm  
750 g | 4 / pack



WG312  
**Bee Nest  
Yellow**  
L: 160 W: 155 H: 212 mm  
750 g | 4 / pack



WG313  
**Squirrel Feeder  
Red**  
L: 156 W: 164 H: 208 mm  
700 g | 4 / pack



WG314  
**Squirrel Feeder  
White**  
L: 156 W: 164 H: 208 mm  
700 g | 4 / pack

# Posts & Mounts

Invite life and light into your garden. When walls or trees aren't available, posts lift bird feeders and nests where you want them, creating small havens for

wildlife. As evening falls, the outdoor candle holder adds a soft glow and gentle movement in the dark.



WG907

## Metal Pole

L: 80 W: 80 H: 1245 mm

2 kg | 4 / pack

Powder-coated steel, stainless steel.

The metal pole is stable, weather-resistant, and easy to place in the ground. It supports up to 10 kg and comes apart in three sections for convenient transport.

**Max load:** 10 kg

### Fits:

- Multiholk
- Multifeeder Barn
- Bird Feeder with Bath
- Giant Feeder



WG908

## Three-piece Post

L: 38 W: 38 H: 1205 mm

0,8 kg | 1 / pack

Pine, stainless steel, water-based black stain.

The three-piece, black-stained post comes in three, making it easy to transport. Each segment is 43 cm. The assembled post has a total length of 120 cm.

### Fits:

- Multiholk
- Bird Feeder with Bath
- Bee Nest
- Butterfly Box
- Squirrel Feeder



WG905

## Pole Black

L: 38 W: 38 H: 1203 mm

0,8 kg | 6 / pack

Powder-coated steel, stainless steel.

Post for firm assembly of bird feeders. The height is adapted to provide a stable fixture.

### Fits:

- All nests and feeders



WG9909

## Outdoor Candle Stake

L: 123 W: 123 H: 630 mm

0,4 kg | 1 / pack

Powder-coated steel, stainless steel.

The pole for outdoor candles lifts the light a bit higher, creating exciting shadows in the darkness.











# Displays

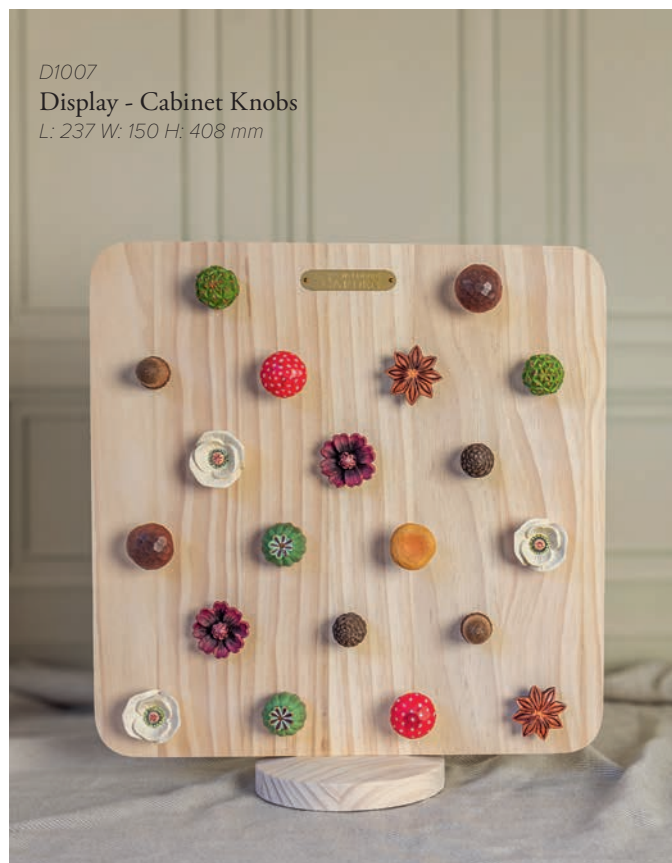
To see more of our display materials, log into our retailer webshop, or contact us at +46 431-768 00 or [info@wildlifegarden.se](mailto:info@wildlifegarden.se).



D1002  
**Display Board Hooks**  
L: 375 W: 139 H: 403 mm



D1008  
**Display Board Pens**  
L: 280 W: 18 H: 145 mm



D1007  
**Display - Cabinet Knobs**  
L: 237 W: 150 H: 408 mm



D1001  
**Display Houses & Feeders**  
L: 442 W: 299 H: 935 mm



Wildlife Garden AB

Ängelholmsvägen 263 SE-269 42 Båstad, Sweden

+46 (0)431-768 00 [info@wildlifegarden.se](mailto:info@wildlifegarden.se) [www.wildlifegarden.com](http://www.wildlifegarden.com)

Customer service open weekdays 08:30–17:00