

CHALK



Introducing our Spring Summer 2026 collection, a homage to soft femininity and timeless classics. Our collection takes inspiration from airy coastal tones, sandy neutrals and nautical deep blues, punctuated by a pop of red. We have selected the highest quality yarns for our designs, including 100% linens and pure cottons, as well as wool and cashmere blends, that ensure garment longevity and maintain breathability. Our pieces are designed for men and women who dress with confidence, ease, and style without compromising on quality. Alongside our clothing collection, the range includes smart, classic cotton homewares and complementary accessories that echo coastal tones and shapes. This is our most considered collection to date. We can't wait to share it with you.

Thank you to our amazing team of creatives...

Photographer: Lyndon & Stylist Claire from York Street Studio

Creative Direction: Nancy & Amelia

MUA: Missy

A special mention to all of our friends and family who model for us around their busy everyday lives, simply because they love our collections and working with the CHALK team.



Michelle wears the Holly Dress in Caramel, the Bromley Bag, Miami Sunglasses, Double Ball Bracelet in Gold and the Double Hoop Earring in Gold



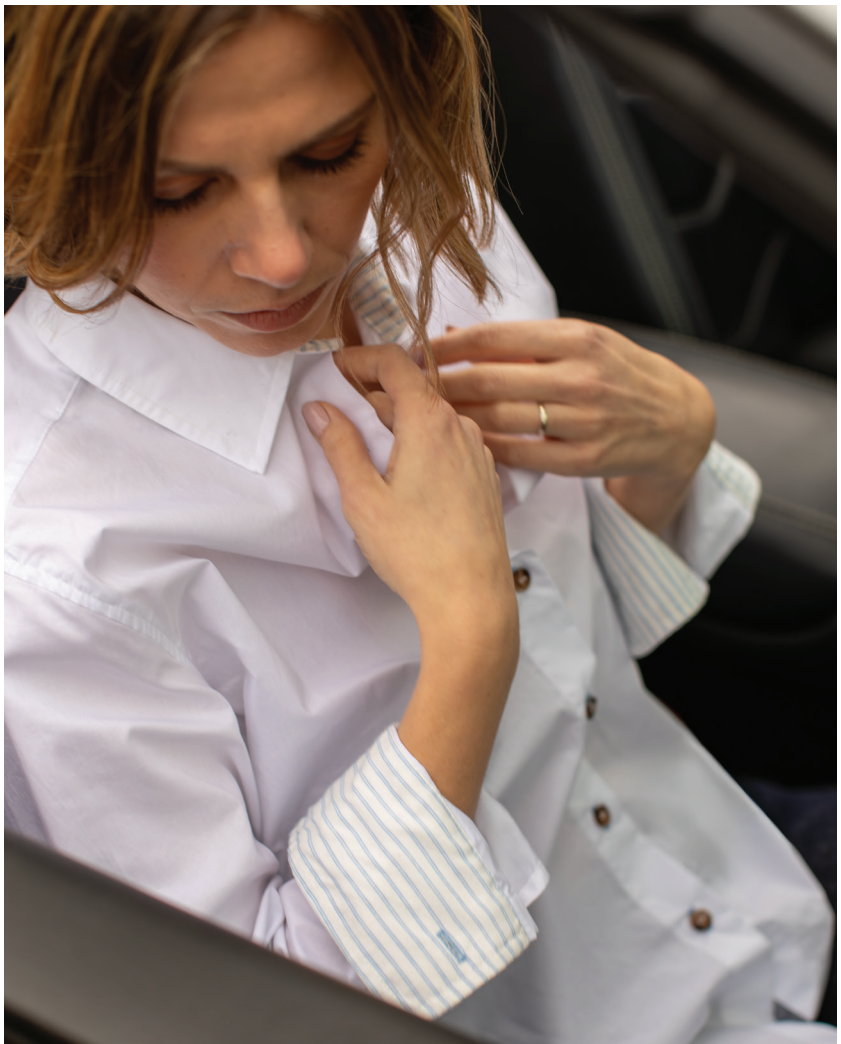
Precious wears the Zoe Shirt in White & the Adele Trouser in White



Natalie wears the Ruth Top in White, the Adele Trouser in White and the Twisted Bangle in Gold.
Maxwell wears the Cygnet Jumpsuit in White



Matthew wears the Damian Top in Ivory, the Richard Shorts in Pure White & the Seoul Sunglasses



Lauren wears the Nola Shirt in White



Paul wears the John Jacket in Navy, the Matthew T-Shirt in White & the Madrid Sunglasses



Noah wears the Damian Top In Navy & the Chris Trouser in Off-White



Lauren wears the Lennie Jacket in Off-White, the Jasmine Trouser in Off-White, the Twisted Bangle in Gold & the Adjustable Enamel Ring in White



Lauren wears the Jenny Jumper in Dark Beige, the Jasmine Trouser in Off-White, the Twisted Bangle in Silver, the Simple Neck Cuff in Silver & the Double Hoop Earrings in Silver



Maxwell wears the Pony Set Top in Navy & the Gosling Pant in Denim



Felix wears the Foal Set Top in Cream & the Hatchling Stripe Jumpsuit in Blue



Matthew wears the Tristan Top in Vanilla & the Richard Shorts in Natural



Lauren wears the Dora Dress in White, the Tassel Ball Necklace in Cream, Chunky Bangle in Cream, Chunky Bangle in Beige Marble



Damien wears the Zack Top in Butter & the Chris Trouser in Navy. Sellina wears the Dawn Blouse in Tobacco & the Palmer Trouser in Tobacco
Michelle wears the Estelle Cardigan in Cream, the Thea Pant in Bark, the Large Flat Disc Necklace in Gold & the Enamel Ball Earring in Cream



Claire wears the Alma Shirt in White, the Palmer Trousers in Beige/Ecru, the Chunky Bangle in Beige Marble, the Mesh Chain Bracelet in Gold, the Seasalter Ring in Gold & the Organic Square Hoop Earrings in Gold.
Felix wears the Foal Set in Taupe





Natalie wears the Devon Jumper in Cream, the Sharon Trouser in Cream, the Multi Ball Necklace in Gold & the Multi Ball Bracelet in Gold.
Maxwell wears the Peachick Set in Tan & the Alphabet No Show Baby Socks in Sand

