

THE ROYAL SWEDISH NAVY

ALWAYS ON STATION - "BE THERE EARLY AND STAY"

UDT 2019

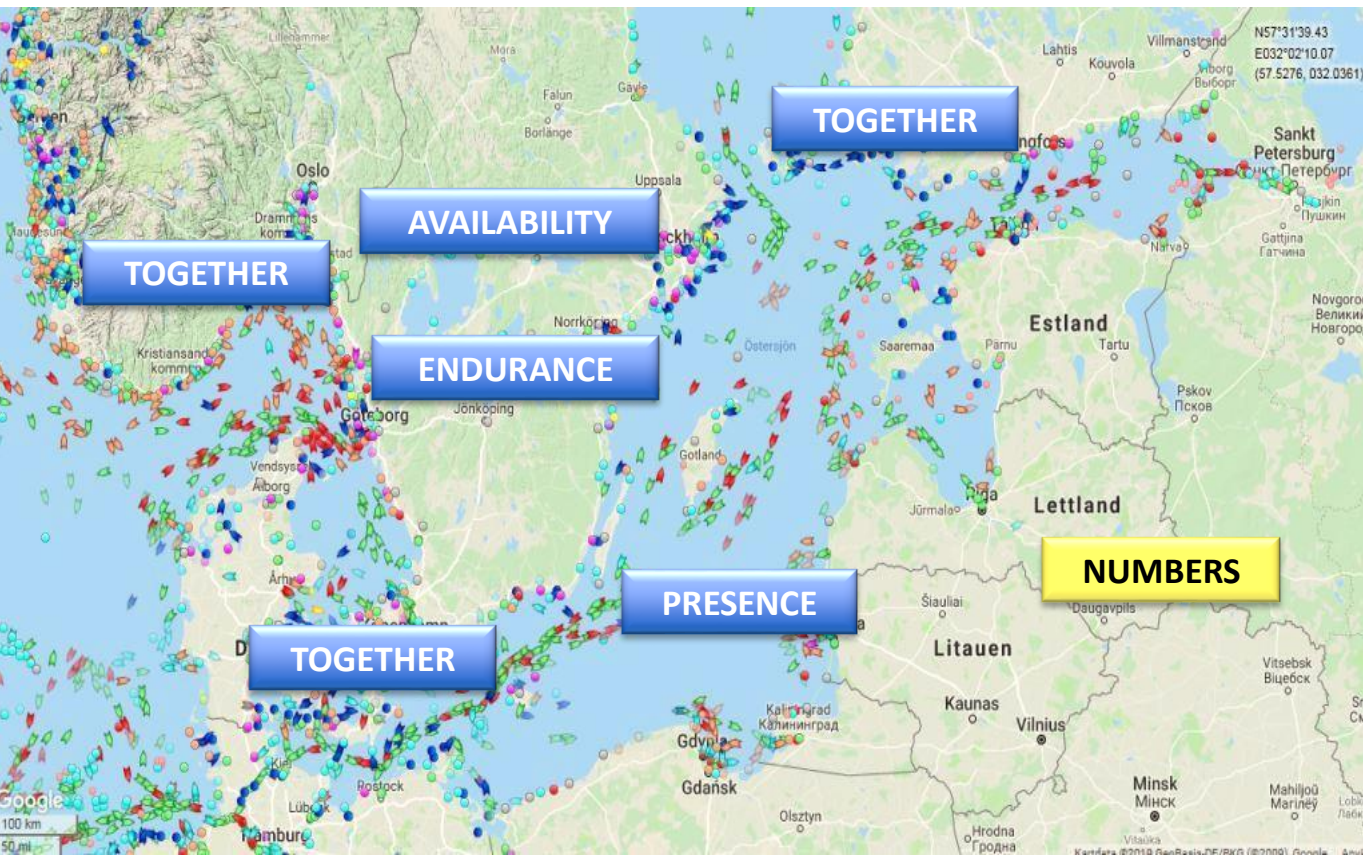


RADM Jens Nykvist
Chief Royal Swedish Navy



ROYAL SWEDISH NAVY

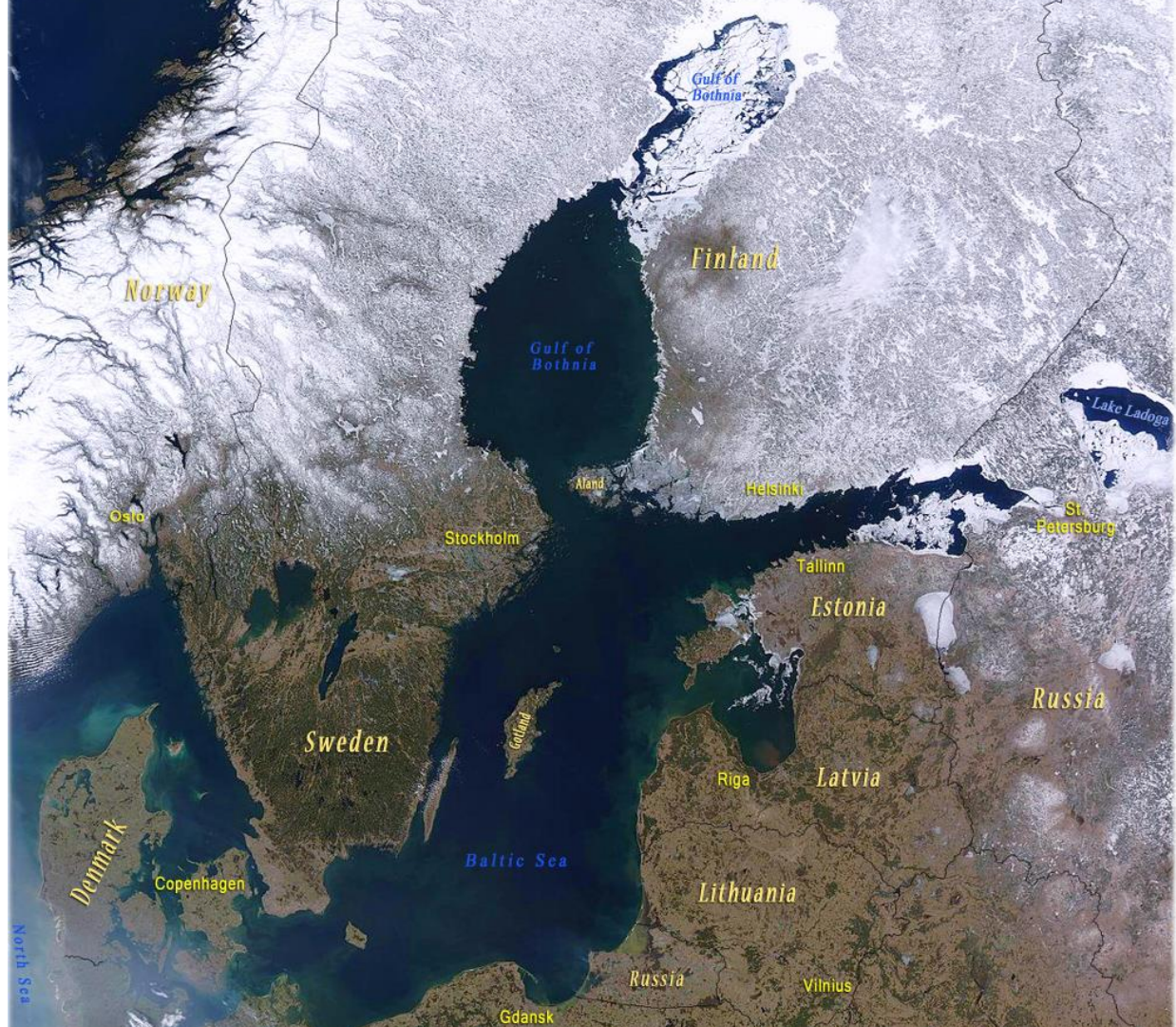
NAVY CAPABILITIES - TODAY AND TOMORROW



Increased
military
activities in the
Baltic Sea
Region

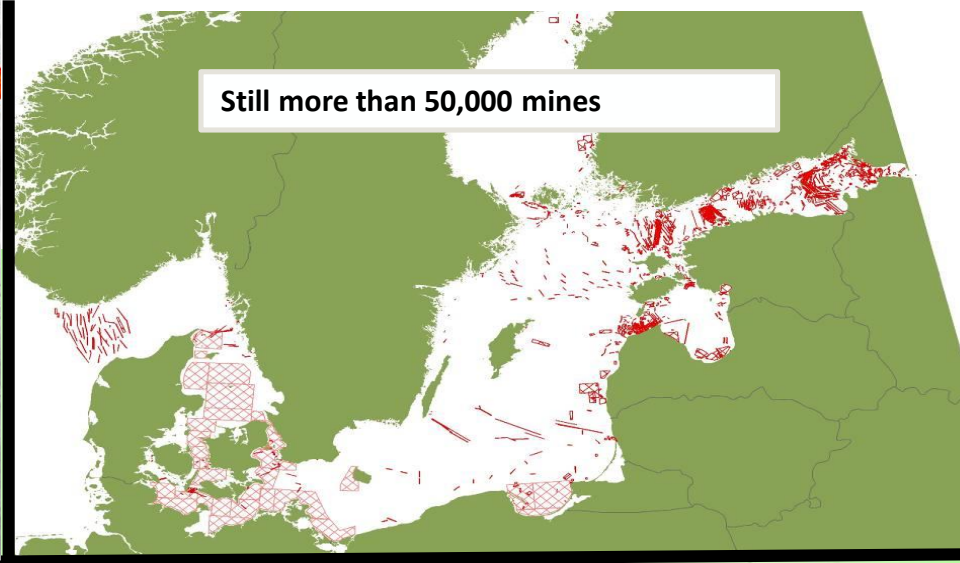
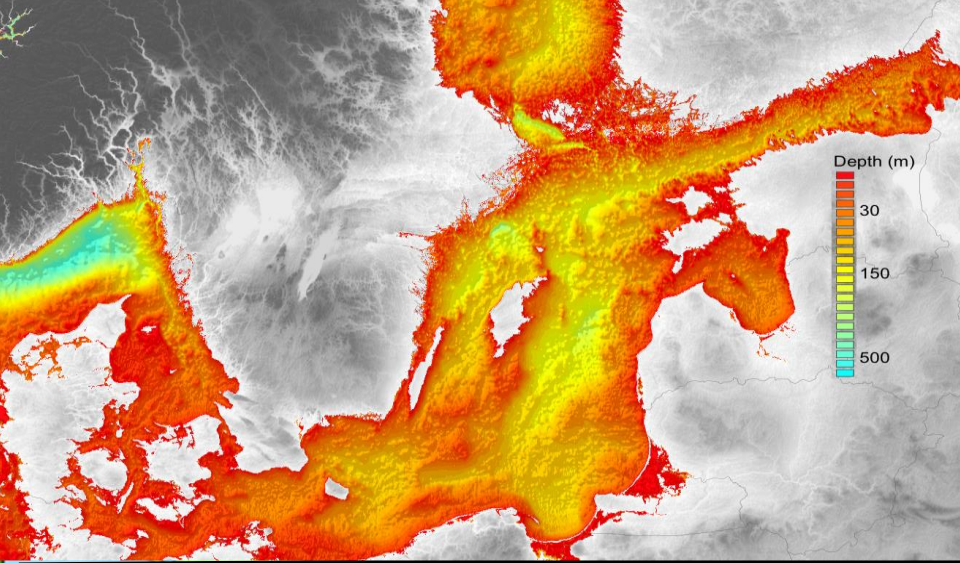
Increased
importance of
the region

Increased
uncertainty



ENVIRONMENT





THE LITTORALS

An aerial photograph of a naval fleet moving through a narrow, winding waterway. The water is dark grey, and the surrounding land is covered in dense green forest. Several large, grey, modern warships are visible, along with numerous smaller, dark-colored boats. The ships are moving in a line, leaving white wakes behind them. The sky is overcast and grey.

- **A UNIQUE, COMPLEX ENVIRONMENT DEMANDING UNIQUE CAPABILITIES**
- **LIMITED SPACE AND SHALLOW WATERS**
- **SHORT REACTION TIMES**
- **BROAD SPECTRUM OF THREATS**
- **PRESENCE OF NON-MILITARY ACTORS**

NAVAL SPECTRUM OF CONFLICT

WAR

LIMITED WAR

VIOLATIONS OF BORDERS

WAR

HARASSMENT –
AGAINST SHIPS AND INFRASTRUCTURE

COVERT INTRUSIONS AND ESPIONAGE

CRISIS

INTEL OPERATIONS

SEARCH AND RESCUE (SAR)

MARITIME SURVEILLANCE AND TERRITORIAL INTEGRITY

PEACE

GREY ZONE

FUTURE

ONGOING AND THE FUTURE





- **Mobility** • **Flexibility**
- **Stealth** • **Cooperation**



ONGOING DEVELOPEMENT

- Midlife upgrade 2xGotland class submarines (2016-2019)
- Midlife upgrade 2xGävle class corvettes (2017-2020)
- New and midlife upgrade Combat Boat 90 (2017-2021)
- SIGINT vessel (2020)
- 2 x A26 submarines (Blekinge) (2024-2025)
- ASW torpedo 47 (2023)
- Surface to surface missile RBS 15 MK4 (2025)

Gotland



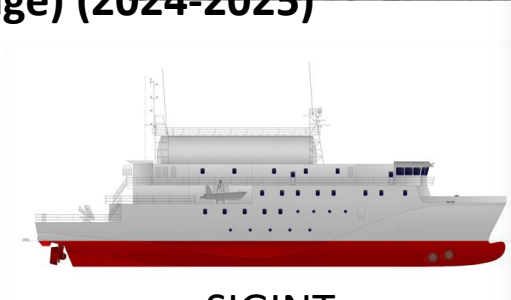
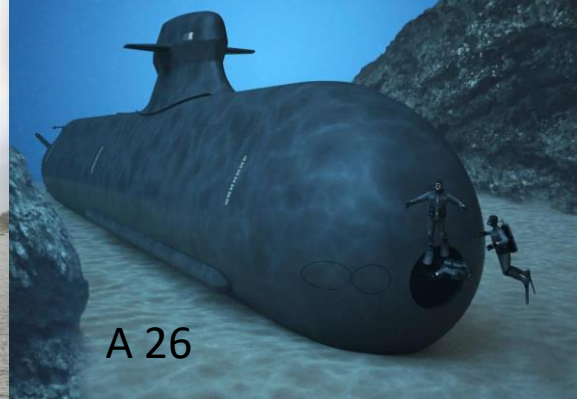
RBS 15



Gävle



A 26



SIGINT



Combat Boat 90



EVOLUTION

Midlife upgrade

Gotland



A 26



Midlife upgrade

Visby



Visby G2



MY PRIORITIES 2019-2030

- **Maintain/develop personnel**
 - **Maintain/develop existing systems**
 - **Midlife upgrade VISBY including air defence**
 - **FISE Naval – Cooperation**
 - **Navy HQ – Move to Muskö**
- MAIN CHALLENGE –
2026 – 2030
NEED TO START NOW!**
- **Development:**
 - **Numbers surface ships – Visby class evolution, Visby G2**
 - **Numbers submarines – aim for 6 submarines**
 - **Marines – increase number of battalions (West coast)**
 - **Support ships (Navy trucks..)**
 - **Autonomous/Remote systems**
 - **Start of next MCM concept**
 - **interoperability**



FINAL REMARKS



A submarine is shown from a high-angle perspective, moving through the ocean. The water is dark blue, and the sun is setting on the horizon, creating a golden glow and long reflections on the water's surface. The sky is filled with dramatic, dark clouds. The word "THANKS!" is written in large, bold, white capital letters across the middle of the image.

THANKS!