

4C | FORESEE

verb fore·see \fôr-'sē\

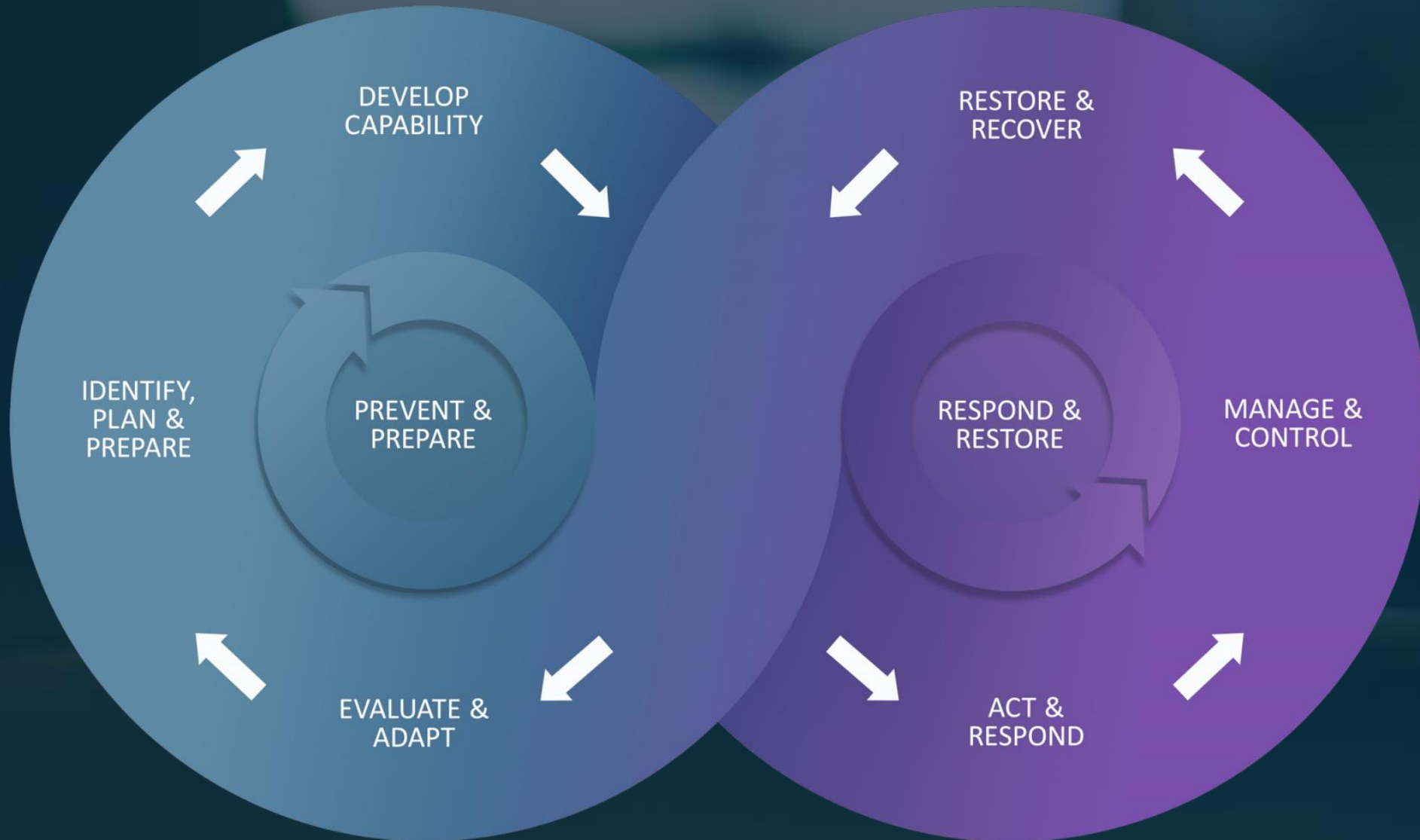
TO SEE OR BECOME AWARE OF SOMETHING THAT HAS NOT YET HAPPENED

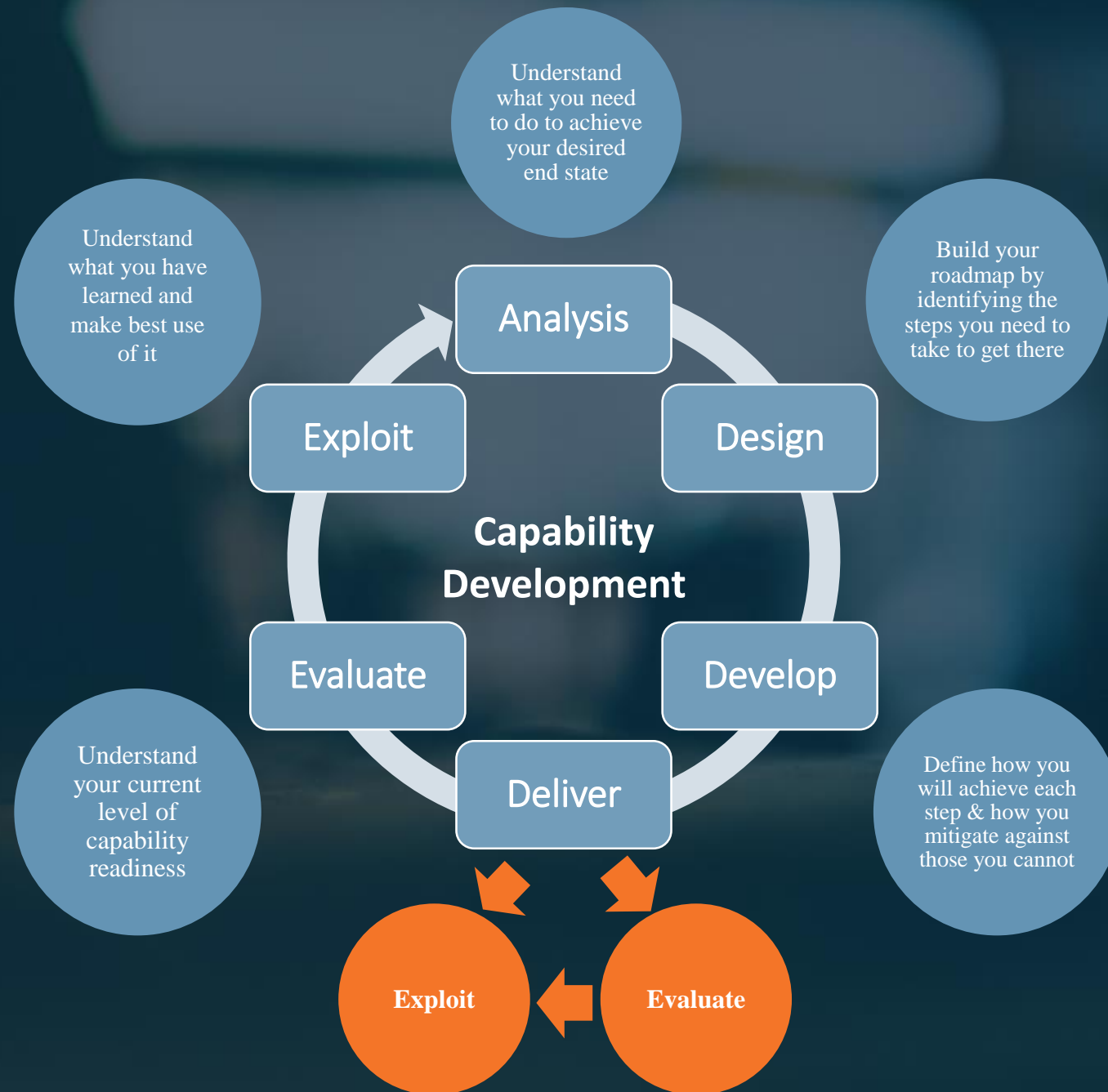


4C STRATEGIES

TRAINING THE CRISIS IN CRISIS MANAGEMENT

Klas Lindström
Managing Director
4C Strategies





What are the key requirements in order to successfully training the crisis in crisis management?



CASE EXERCISE UNIFIED RESPONSE

EXONAUT® POWERED
BY

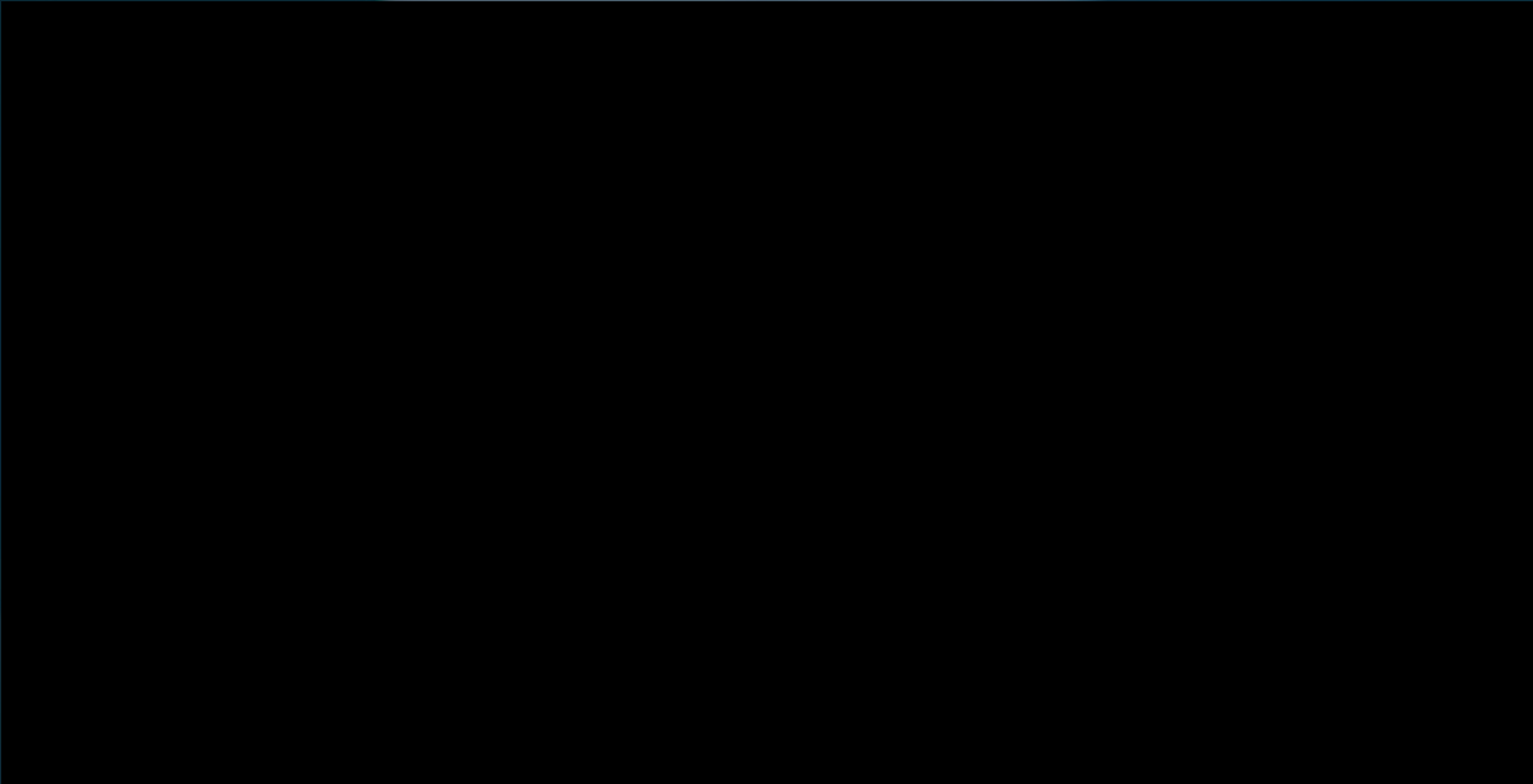


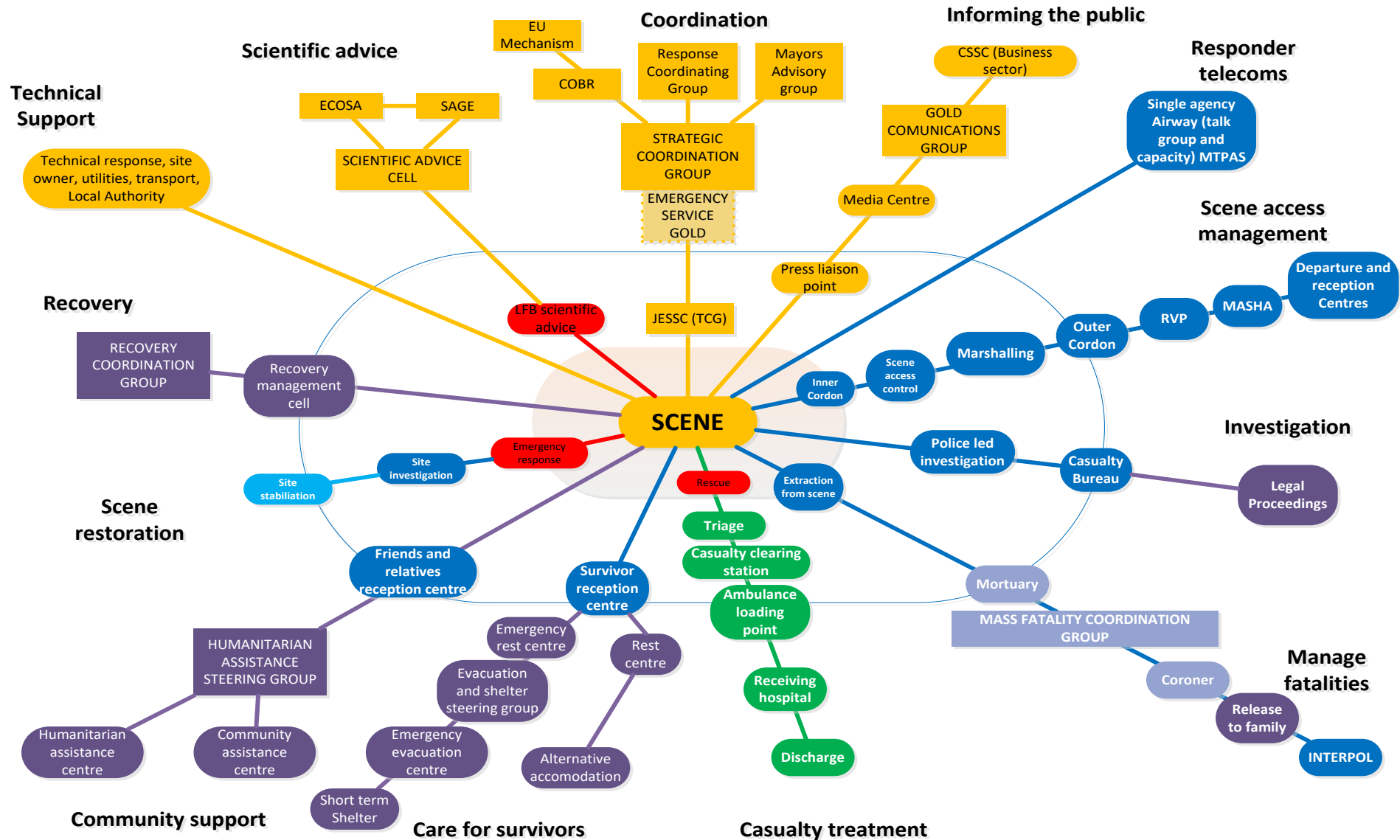


OVERVIEW AND OBJECTIVES

- Held over 4 'long days' (10.00 – 20.00 hrs each day) – 29th Feb – 3rd March 2016
- London's largest and most complex exercise ever
- Key objectives included:
 - Promote London & UK resilience
 - Implement major incident & national response protocols & procedures
 - Practise rarely used functions –e.g. a temporary mortuary & Humanitarian Assistance Centre
 - Test activation of the EU Civil Protection Mechanism
 - Upskill participants (and planners)
 - Boost public confidence
- Designed and delivered to meet all participating agencies training needs

999







A HIGHLY AUTHENTIC RESCUE SCENE

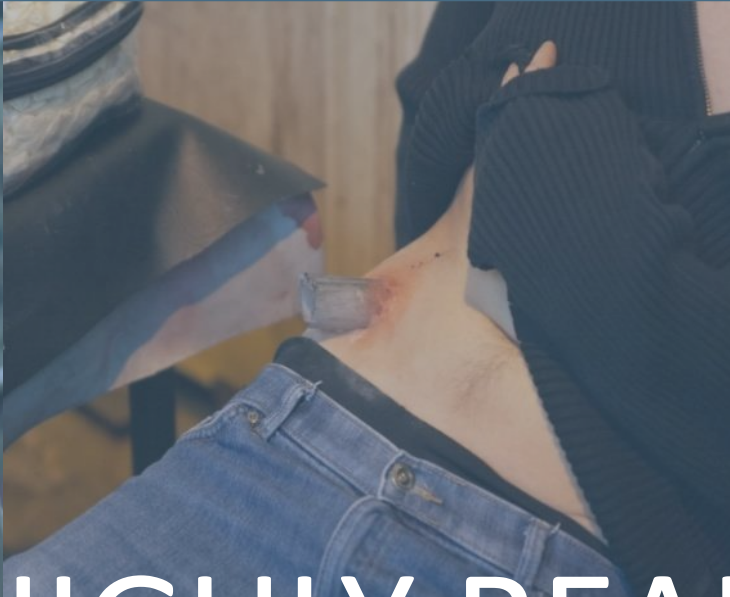




4 000 RESPONDERS
2 500 CASUALTIES
300 FACILITATORS



RESCUE, TRIAGE, SCENE ACCESS CONTROL & INVESTIGATION



HIGHLY REALISTIC INJURIES



INTERACTION BETWEEN COMMAND LEVELS & CO-ORDINATION CENTRES





TEMPORARY MORTUARY

HUMANITARIAN ASSISTANCE CENTRE



‘ADDED VALUE’ ACTIVITIES....

- **National USAR teams**
 - played a key role in the exercise build & de-construction
- **Private & public sector support**
 - RWE, Transport for London, McGee Demolition & the Military (commercial value = approx. £2m)
- **Young engagement**
 - young people both helped out and learned
- **LFB staff volunteers**
 - 150 non-operational personnel played a key role in exercise delivery
- **Long term training benefit**
 - through future utilisation of extensive library of AV materials



EVALUATION

EXONAUT® POWERED BY



 **Evaluator**

1675

15000+

What are the key requirements in order to successfully training the crisis in crisis management?

MATURITY

PROCESS

REALISM

FEEDBACK





4C READINESS MATURITY CURVE



QUESTIONS?



4C STRATEGIES

NAVIGATING UNCERTAINTY

STOCKHOLM | LONDON | WASHINGTON D.C. | MALMÖ | WARMINSTER