



2 0 2 1
2 0 2 2

COMPANY

P R O F I L E

West Nile st. in front of Akhmim
Bridge., AlHassan & AlHossein
Tower, Sohag, Egypt

Phone: 002 01068258958
002 093 2715383

info@sohayinn.com
www.sohayinn.com

Content

- 1 Who we are

- 2 Our Vision

- 3 Goals & Commitments

- 4 Our Team

- 5 Sohay Inn..Investing responsibly

- 6 Our SDGs

- 7 SDGs mapped against ESG in Sohay Inn profile

- 8 Our New Line

- 9 Our Projects



01



WHO WE ARE

Sohag Inn Co. (Egyptian Shareholding Company) Commercial Registration No. 2249, Tax Card No. 55/917/523/, is a real estate development and services company in Upper Egypt, that aims to invest in a better future in order to make a difference in lives of our clients, our people, and our country.

Sohag Inn was founded in 2013 by Dr. Omer ElSheikh, an environmental scientist and assistant professor at Sohag University in Sohag city, Upper Egypt, where Sohag Inn is located. And the majority of the shareholders and project sponsors are members of ElSheikh family.

02

OUR VISION

Our company's vision is to be pioneers in the field of sustainability, and to improve the real estate infrastructure, especially the medical one, by investing in sustainable Smart and Green (SSG) buildings, which leads to the protection and enhancement of the value of our clients and contributes in creating a sustainable world.



PRODUCTIVE **P**ASSIVE **A**DAPTIVE
(PPA) BUILDINGS

03

GOALS & COMMITMENTS



Sustainable, Smart & Green

Sohay Inn is committed to aligning its business practices, the way it operates, and strategies with the United Nations Sustainable Development Goals (SDGs) and Egypt's Nationally Determined Contributions (NDC).

Sohay Inn started this journey by defining alignment with ten goals and creating portfolio-wide initiatives consistent with these goals.

04

OUR TEAM

We are a nimble and forward-thinking team of scientists and developers, engineers and analysts with a variety of backgrounds and experiences.

Our talent, creativity and passion is focused on creating new urban environments that respond to changing desires and needs. Our varied backgrounds and interests influence the vision for the exciting communities we develop.

OUR TEAM



DR. SAMEH H. HABIB NASHID
CHAIRMAN OF BOARD OF DIRECTORS



MR. MOHAMED EL-ARIF
CEO



DR. HANY A. ABDEL-RAHIM
CFO



DR. NAIRA REFAAT
R&D DIRECTOR



MR. ABDELRHMAN M. KOBRO
DESIGN AND GRAPHIC DIRECTOR



MS. HALA EL-SHARKAWY
MARKETING AND SALES DIRECTOR



MRS. JAKLIN R. BUSHRA
COMMUNITY SERVICE DIRECTOR



MS. HIND MOHAMED
HR DIRECTOR



DR. AHMED A. EL-SHEIKH
HEAD OF GENERAL MEDICAL
DEVELOPING TEAM



DR. IBRAHIM I. EL-SHEIKH
HEAD OF MEDICAL
ADMINISTRATION
DEVELOPING TEAM



DR. SHADY H. HABIB NASHID
HEAD OF MEDICAL OPERATION
DEVELOPING TEAM

CONSULTANTS



PROF. DR. AHMED EL-KHATIB
QUALITY CONTROL CONSULTANT



DR. OMAR M. EL-SHIKH
ENVIRONMENTAL CONSULTANT



DR. REHAM FAROUK
MARKETING CONSULTANT



DR. HUDA A. ABDEL-HAMID
STRATEGIC PLANNING CONSULTANT

05

SOHAY INN

INVESTING RESPONSIBLY

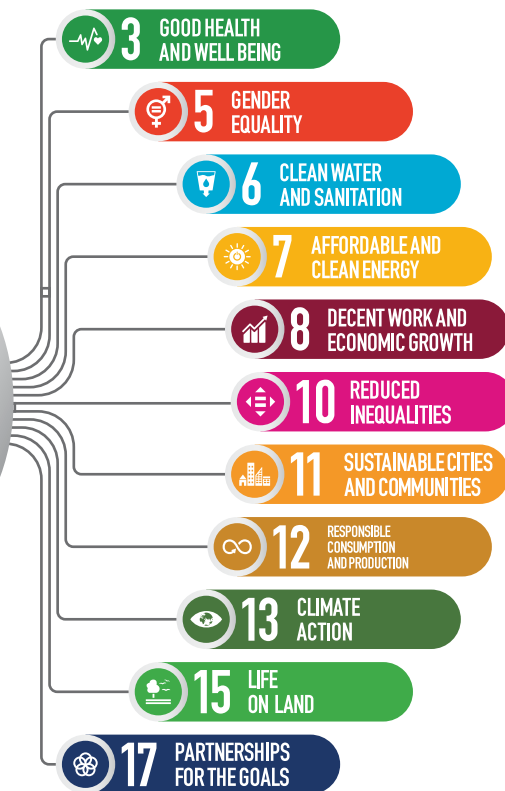


As real estate developers, we believe it is the time for Responsible Investment (RI) as Environmental, Social and Governance (ESG) Principles are strategic priority for Sohay Inn, and it is the umbrella for the criteria used for responsible investment, as these factors have a clear impact on the future of the real estate market

06

OUR SDGs

SOHAY INN CONTRIBUTION TO THE UNITED NATIONS SUSTAINABLE DEVELOPMENT GOALS (SDGs)



In 2015, a meeting was held at the UN where, 193 countries committed to 17 Sustainable Development Goals, known as SDGs, with 169 targets aimed to end poverty, fight inequality and tackle climate change. These goals are universal and requiring act from everyone including; Citizens, Non-profit organizations, companies and Businesses.

And because the real estate industry accounts for half of global wealth, %40 of the world's consumption of primary energy and a third of all anthropogenic CO₂ emissions there is no mistaking that the industry can contribute in achieving certain Global Goals

Here at Sohay Inn as a leading company in Sustainable, Smart and Green (SSG) building in Upper Egypt, we identified 10 SDGs that chime well with our core values and strategy.

07

SDGs MAPPED AGAINST ESG IN SOHAY INN PROFILE



**OUR PROJECTS ARE ACTIVELY MANAGED
WITH AN ESG OVERLAY**

08

OUR NEW LINE



Medical **I**ntegrated **S**ervices **A**nd **L**ogistics **E**difices

We, as real estate developers working under the ESG umbrella, recognized the inevitability of reorganizing the private medical real estate sector and developing its infrastructure in Sohag, as a great investment opportunity.

We present our novel module in Healthcare Industry “MISALE” as a new (Sustainable, Smart and Green) real estate commodity to meet the increased medical service demand in the wake of COVID19- and as the perfect opportunity for investment

Medical
Integrated
Services
And
Logistics
Edifices

The presented module is the first of its kind in Upper Egypt to reorganize the private medical sector to become an effective partner with the public medical sector in the face of emerging epidemics. Moreover, it presents a practical application of the positive aspect of the Egyptian government’s new regulations regarding urban reorganization and control and the great opportunity for both local and international investment.

09

OUR PROJECTS

EL HELAL MEDICAL EDIFICE



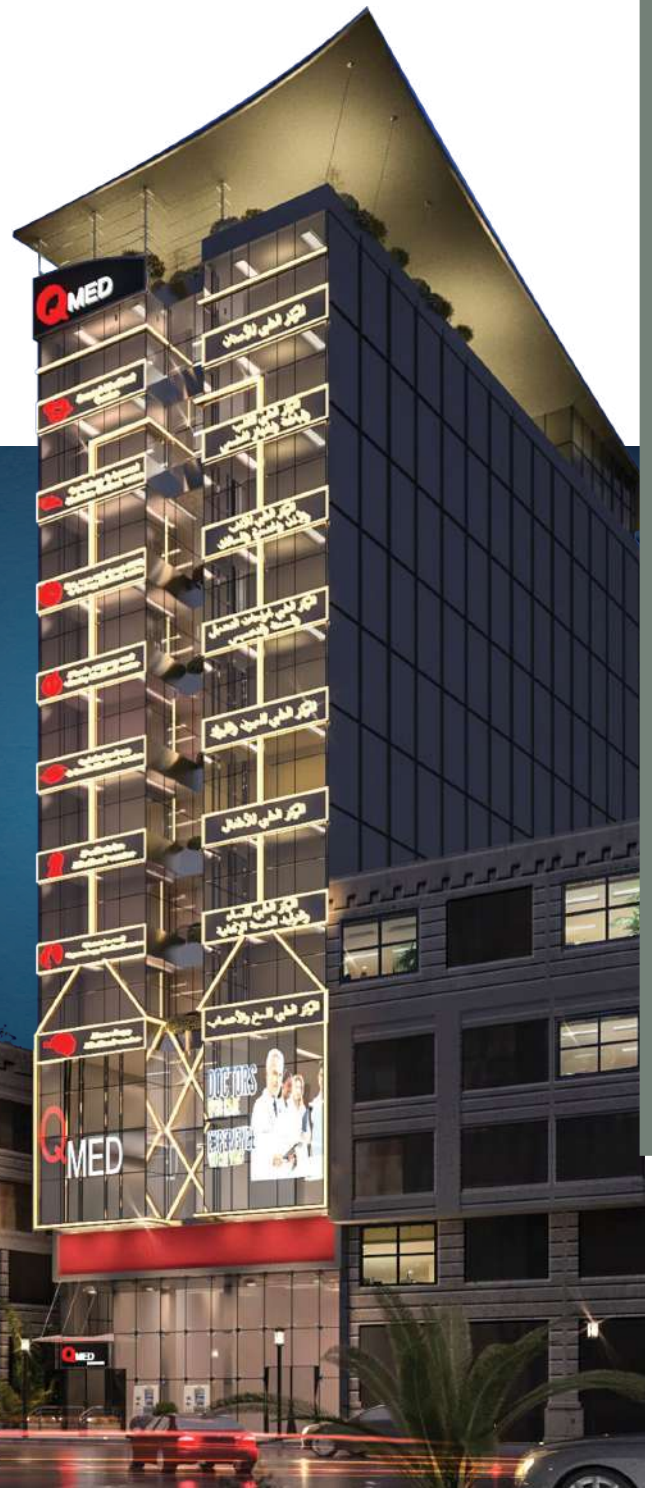
NEW HORIZON FOR THE NEW REPUBLIC



Q-MED MEDICAL TOWER



YOU
DESERVE



التأمين
الصحي
الشامل

Green Plaza



Nile Edin





THANK YOU



www.sohayinn.com



info@sohayinn.com



002 01010647994



093 2715383



Sohay inn



**NEW HORIZON
FOR
THE NEW REPUBLIC**