



**DYNAMIC
MAP
PLATFORM**

Company Overview



Our Vision: Modelling the Earth

*We aim to provide **precise 3D data** to drive innovation and address social issues.*

OUR HISTORY

2016

Established

DMP was born out of Japanese **Cabinet Office**'s initiative called "**Strategic Innovation Creation Program**",.

Invested by all Japanese OEMs, Map providers, Surveyors, Consumer Electronics, and government owned funds.



2019

Ushr joined the group

DMP started its global expansion by welcoming **Ushr**, the leading HD map developer in the US, to the group.



2022

Started Europe business

DMP established **DMP Europe** in **Germany**, started data acquisition and mapping.

2025

Become Public

DMP was newly listed on the **Tokyo Stock Exchange Growth Market**.



KEY FIGURES

2016

ESTABLISHED

DMP was born out of the initiative by the Cabinet Office of Japan to build a common infrastructure for future digital society,

251

EMPLOYEES

100 people in the HQ in Tokyo,
More than 120 people in Michigan,
70% engineers

52%

SALES GROWTH

From March 2020 to March 2025

26

COUNTRIES TO PROVIDE

We provide our map data in 26 countries, including Japan, US, Canada, South Korea, 6 Gulf countries, and 16 European Countries.

1.8 MILLION KM 3D ROAD DATA

We capture *3D point cloud data* with our own Mobile LiDAR systems and generate cm class accurate *High-Definition Maps*.

Our data spans 1.8 Million km of major road networks across the world, including *North America, Europe, Japan, South Korea, and Middle East*.





Our high-precision 3D data supports automotive, infrastructure, and more.

CUSTOMERS



PARTNERS



OUR SYSTEM

DMP uses precise **LiDAR-based** survey systems to collect road information.

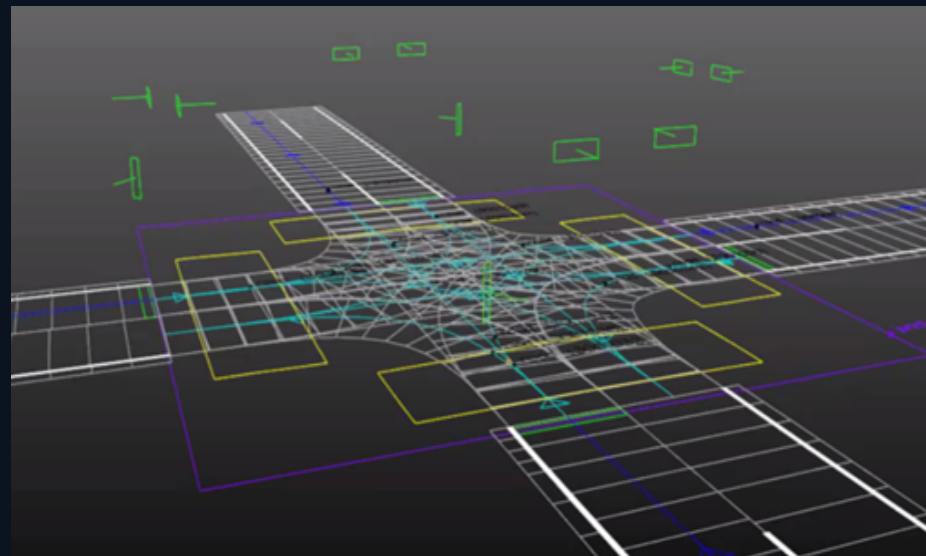
DMP operates a fleet of 5 vehicles in Europe, equipped with **Riegl VMX and VMQ systems**. All systems leverage the Riegl VUX-1HA LiDAR scanner and include an integrated GNSS/IMU solution with DMI.

In every region, we have **forward- and backward-facing camera images**.

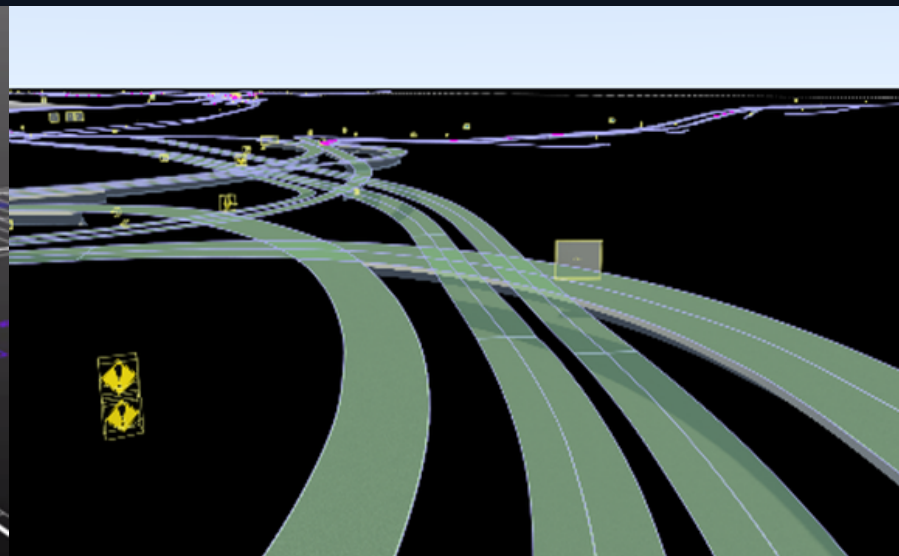


Convertible to Multiple Data Formats

DMP's HD map can be converted to **more than 20 different formats**, including **OpenDRIVE**, **RoadRunner**, and **Unreal Engine**.



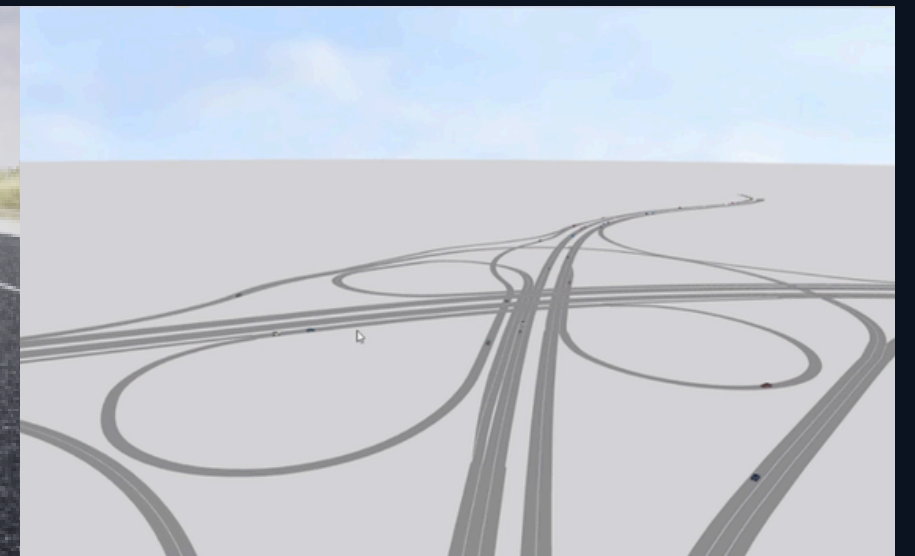
OpenDRIVE



RoadRunner



Unreal Engine



PTV Vissim

HD map for Automotive Simulation

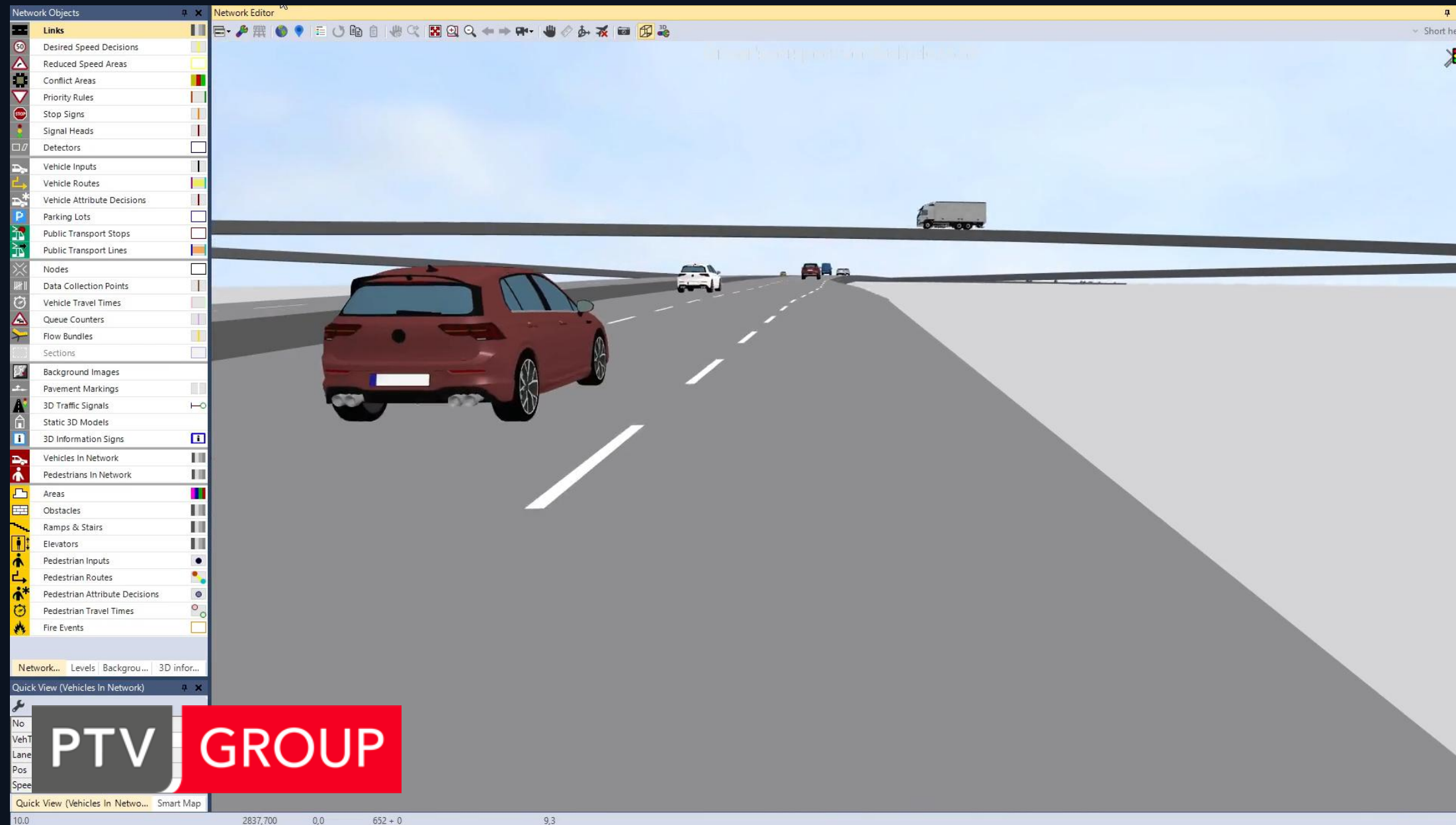
DMP's HD map data can be converted to multiple data formats including **OpenDRIVE**, which enables you to create **simulation network for your AD/ADAS development**.

We can provide not only **road networks**, but also **3D environments** like surrounding buildings, to create a tailored simulation environment.

DMP's HD map can significantly **save your effort** in simulations, **save your time** to go to market.



HD map for Traffic Simulation



DMP's HD map serves as a reliable road network for **microscopic traffic simulation (PTV Vissim)**, supporting the **optimization of traffic volumes** on major roads such as the Autobahn.

This enables road authorities to conduct simulations more easily and prepare plans more quickly.

DMP's HD map enables **Quick and Efficient Traffic Planning** through microscopic traffic simulation.

Get in Touch.



Takuya Taniguchi
Director, Business Development
taniguchi.takuya@dynamic-maps.co.jp
<https://www.dmp-eu.com/>