

WELCOME IN GALLI s.p.a.



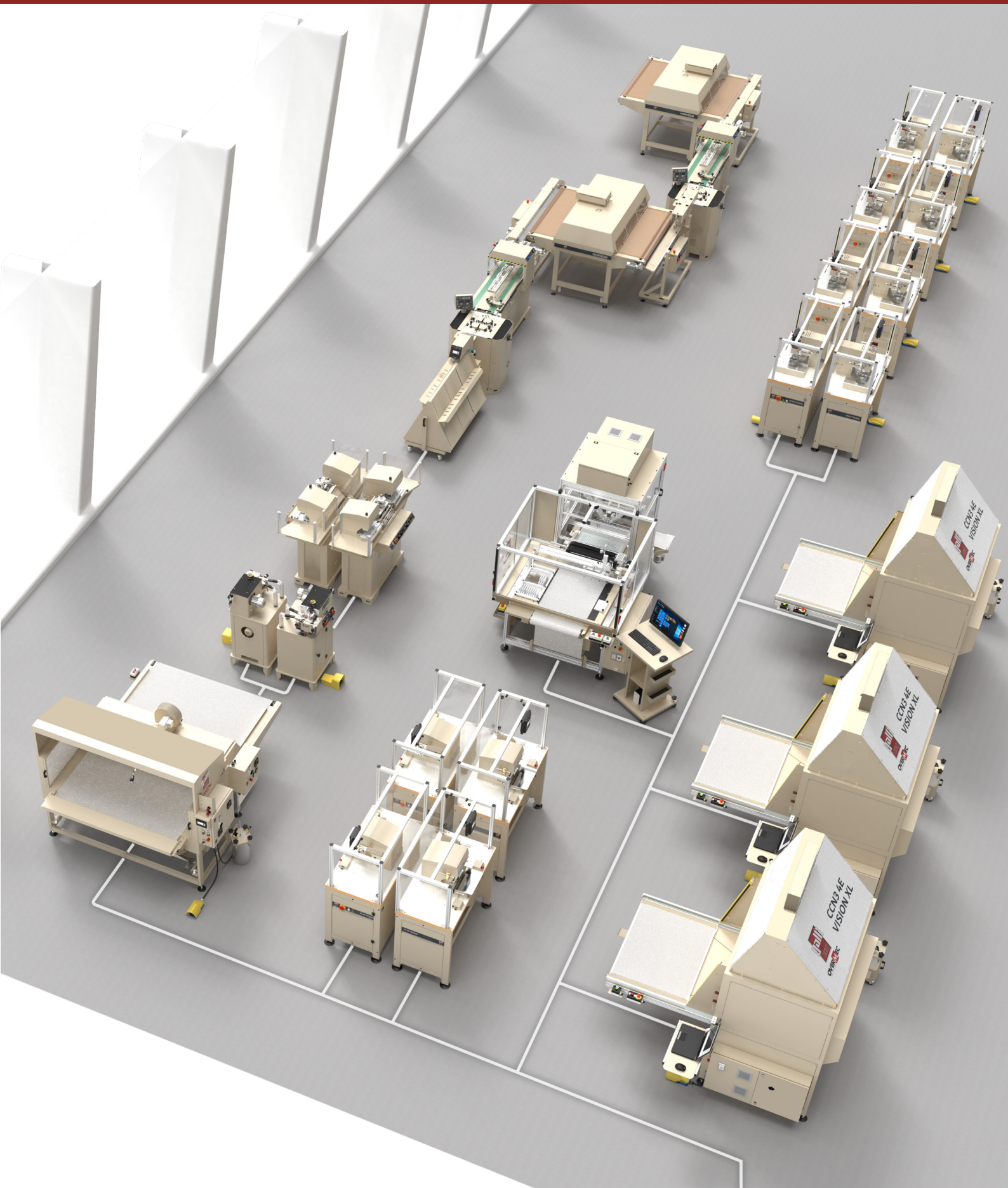
**OVERMEC**  
brand of Galli S.p.a

**VISIT NOW**

DISCOVER OUR PRODUCTS  
AND ALL RELATED SERVICES

[WWW.GALLISPA.COM](http://WWW.GALLISPA.COM)

Galli S.p.a. is a leading company in the market for the design, production and sale of leather goods machines.



## SCAN“QR CODE”



Galli S.p.a. boasts more than 45 years of experience in the design of machinery for leather goods, providing its customers with a 360° service up to the “Turnkey” formula.

Starting from the end of 2020, Overmec®, a company specialized in the production of gluing machines, becomes an official brand and an integral part of Galli S.p.a.®.

Thanks to this acquisition, in addition to completing the product portfolio offered, the technological know-how is further increased, allowing the development of new hi-tech solutions.

The company is now able to satisfy the most varied needs: starting from the design of custom-made machines up to the final creation of production lines, passing through continuous “STEP by STEP” assistance.



WELCOME IN GALLI S.P.A.  
SOLUTIONS AT YOUR SERVICE



HEADQUARTERS: Via Cararola 59 - Vigevano 27029 (PV) - Telephone: (+39) 0381.42423 - 0381.344290

[info@gallispa.it](mailto:info@gallispa.it) - [commerciale@gallispa.com](mailto:commerciale@gallispa.com) - [support@gallispa.com](mailto:support@gallispa.com)

# THE COMPANY

Born in 1979 from an idea by Emilio Galli, Galli S.p.a. is today a renowned company in the sector of design and production of leather goods machines; a company that has become a point of reference, worldwide, in terms of precision and technique.

Galli S.p.a offers its customers a fleet of machines, managing to satisfy, from the height of its more than forty years of experience, all requests: machines that are “shaped” according to needs, customizing them and bringing them to an astonishing level of innovation.

From design to sale, the entire process undergoes constant quality control by our specialized staff.

We design innovative systems for leather goods production plants. Quality in construction, technological innovation and attention to customer needs in terms of process improvement and production efficiency are the elements that have always distinguished the company.

We are specialized in the production and design of work centers and lines for leather goods: die-cutting machines, stamping machines, stapling machines, coupling machines, trimming machines, milling machines, sanding machines, brushing machines, coloring machines, smoothing machines, gluing machines, ovens, loading and unloading robots, automatic gluing systems, are just some examples of the wide range of products made.

With more than 100 models in the catalog, careful planning capable of following the needs of our customers is a priority.

Service to our customers is our Mission. With its technical team dedicated to design, Galli offers its customers services for the study and development of new technical and innovative solutions. Constant progress and experimentation both on the finished product and through 3D modeling, allows us to obtain a product of high quality and technological completeness.

In addition, the technical support team is at your disposal for the identification and resolution of daily production problems. Among the possible assistance we offer telephone/video, remote, on-site support, all to guarantee maximum reliability.





## HANDLING AND DELIVERY

"We safeguard any product during handling and transportation, analyzing the characteristics and identifying the packaging needs."



## SUPPORT FOR BUSINESSES "AT THE SERVICE OF YOUR NEEDS"

"The company offers 360° support that starts from the discussion of the project up to the training of the staff."



## SOCIAL NETWORK

"Follow us and stay updated on all the initiatives of Galli s.p.a. world - Linkedin - YouTube - Instagram"



## HIGH QUALIFIED STAFF

"An expert team always in contact with the customer."



**OVERMEC**  
brand of Galli S.p.a

CUTTING - EMBOSsing  
FINISHING  
PREPARATION



## RELIABILITY AND EXPERIENCE FOR OVER 45 YEARS

"Always believing in technological innovation, our team of engineers is expert in translating functional requirements into cutting-edge technical solutions, which stand out for quality, efficiency and reliability. Thanks to continuous collaboration with our customers, we are able to develop innovative projects, resulting not only as simple executors but as technological development partners."



## CUSTOM MACHINES

"Designed and tailor-made to meet the most demanding customer requests"

SOLUTION AND TECHNOLOGY FOR:

- LEATHER GOODS
- AUTOMOTIVE
- FOOTWEAR
- PAPER INDUSTRY
- BOX FACTORY

**gallispa**

HEADQUARTERS: Via Cararola 59 - Vigevano 27029 (PV) - Telephone: (+39) 0381.42423 - 0381.344290

info@gallispa.it - commerciale@gallispa.com - support@gallispa.com

# TECHNOLOGY AND SECTORS OF APPLICATION

## INNOVATIVE SOLUTIONS FOR COMPANIES:

Galli S.p.a. offers a wide range of machines and services for the leather goods sector, mainly: watch straps, belts, bags, saddles and accessories, but also automotive, footwear and paper converting. Choosing Galli S.p.a. technology and innovation means purchasing innovative products, software and hardware that are always up to date and custom-developed to create cutting-edge machines.

Within the company, a team specialized in "RESEARCH and DEVELOPMENT" constantly analyzes any new solution on the market, verifying the possibility of integrating it with newly produced/designed machines.

The constant development and experimentation both on the product and through 3D computer modeling, allows us to obtain a "TOP QUALITY" finished product capable of achieving a guaranteed result of the processing.

All our products are designed to offer a modular solution - of the (STEP BY STEP) type - this allows our customers to make a safe, gradual and always implementable investment.

Thanks to the coordination between its technical and commercial team, Galli S.p.a. is able to offer services for the development of special equipment and the study of "CUSTOM-MADE" production layouts. In addition to designing quality machines, our TEAM is also able to create tailor-made solutions suited to the customer's needs.

With more than 100 models in the catalog, careful planning capable of following the needs of our customers is a priority. Quality and Technology are the watchwords of our entire production process. From design to sales, the entire process undergoes constant quality control by our specialized staff.

Galli S.p.a. imagines an interactive future, where the customer's needs are forged into modular machines, interactive tools capable of interacting with the operator, machinery capable of automatically adapting to technicians, where everything is standardized and interconnected to the network.

## BUT NOT ONLY THAT:

To satisfy the ever-growing market needs, Galli S.p.a. is able to offer its customers complete support, proposing customized training courses. Training can be technical, for plant assistance and maintenance, or practical to make the best use of the machinery and new technologies available. We train our customers' employees at our headquarters or, upon request, at their company.

Finally, we have a worldwide network of dealers and assistance that will allow you to quickly obtain the spare parts suitable for your machine. Consult the dealer closest to you or send us a request.

## THE FUTURE

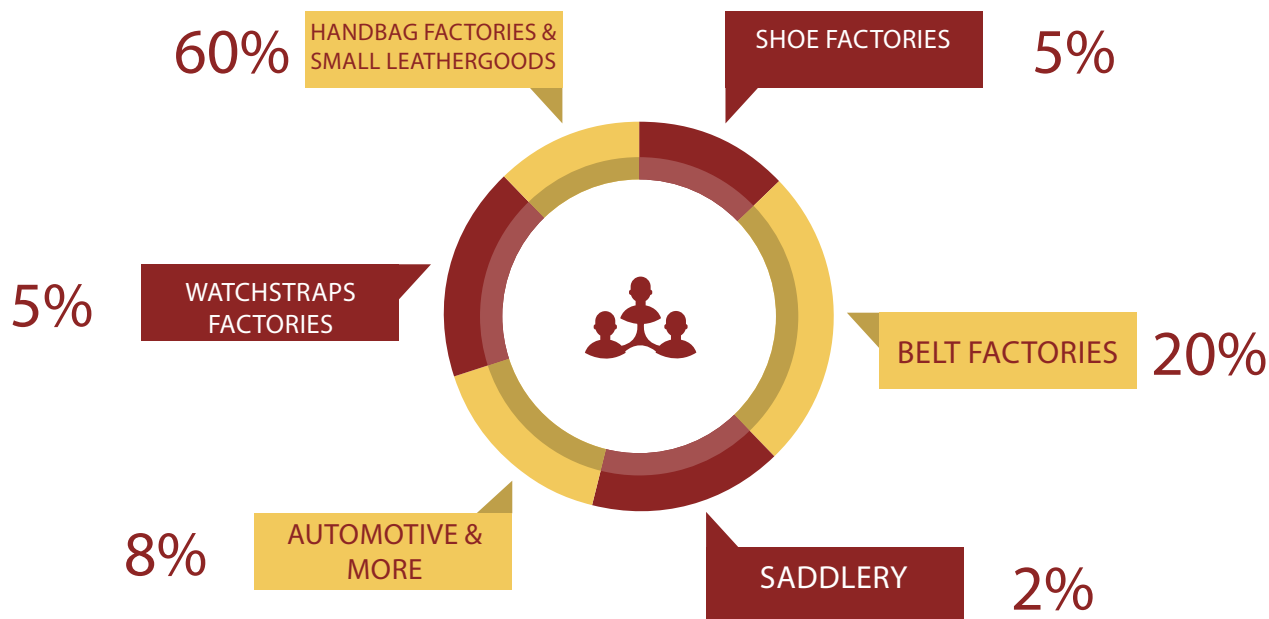
Galli s.p.a. imagines an innovative future, tailor-made to meet the growing needs of relationship between MACHINE and OPERATOR.

" Innovative solutions where machines interact with the operator, adapting and guaranteeing an unprecedented quality process."

## TAILOR MADE MACHINES

Galli S.p.a. STAFF offers its customers the advantage of a unique coordination in the works, guaranteed by a single supervision, the production process acquires greater quality and speed of execution in each of its individual sectors. Furthermore, Galli S.p.a. TEAM thanks to a single coordination, enjoys a constructive dialogue with the client, with frequent exchange of ideas and suggestions.

## OUR CUSTOMERS



AT THE SERVICE OF CUSTOMER'S NEEDS TO CREATE NEW AND INNOVATIVE SOLUTIONS FOR THE MARKET.

The wide range of our production allows us to offer our customers different solutions based on specific needs. In terms of automation levels:

"The high technological level achieved by our machines also allows us to develop AUTOMATED WORK LINES based on specific needs."

## CUSTOMER SERVICE

As a GALLI customer, you have a guaranteed access to a complete service for your systems/machines. A team of specialized technicians is at your disposal to identify and resolve daily production problems. Among the possible assistance we offer telephone/video, remote, on-site support, all to ensure maximum reliability.

Contact our technical support team now, by sending an email to [support@gallispa.com](mailto:support@gallispa.com). A dedicated department always ready to solve any problem in the shortest possible time.

HEADQUARTERS: Via Cararola 59 - Vigevano 27029 (PV) - Telephone: (+39) 0381.42423 - 0381.344290

[info@gallispa.it](mailto:info@gallispa.it) - [commerciale@gallispa.com](mailto:commerciale@gallispa.com) - [support@gallispa.com](mailto:support@gallispa.com)

# ESTABLISHMENTS

2 LATEST GENERATION FACTORIES TO CREATE AND BUILD THE PROJECTS OF "TOMORROW".

100% QUALITY MADE IN GALLI

## HEADQUARTERS

SALES DEPARTMENT / RESEARCH AND DEVELOPMENT DEPARTMENT / MACHINE PROTOTYPING AND ASSEMBLY DEPARTMENT / SOFTWARE DEPARTMENT / ADMINISTRATIVE DEPARTMENT / PRODUCTION AND PURCHASING DEPARTMENT / ELECTRICAL DEPARTMENT

## WAREHOUSE

AUTOMATED WAREHOUSE

# STANDARD SOLUTIONS

CATALOGUE SOLUTIONS, WITH OVER 100 HIGH QUALITY MODELS

Galli S.p.a. offers companies a fleet of top-quality machines, with over 100 models available in the catalogue. All the "Made in Galli" machines reflect the 5 points that are the basis of the company's continuous development and renewal: "Construction quality, Reliability in performance, Innovation and Technology, Safety and Environment, and Study of customer needs". The STANDARD solutions offer different alternatives depending on the needs: "Machines for leather goods, saddlery, watch straps, bags, belts, wallets, furnishing accessories, chairs, armchairs, sofas, office accessories, automotive, leather objects, laces, leather and synthetic material strings, nautical, covered buttons and buckles, footwear, collars and leashes, leather labels, packaging and technical articles.

## CUSTOMIZATION

The R&D department, based on needs, makes it possible to customize our machines by customizing them according to customer requests.



# TAILOR MADE SOLUTIONS

WHERE STUDY, ANALYSIS AND DESIGN MEET TO SHAPES THE PRODUCTION OF THE FUTURE.

Galli S.p.a. as previously mentioned offers tailor-made and innovative solutions for the benefit of companies and designers, to satisfy the ever-increasing market demand, Galli has made it possible to create new mechanisms to create new work tools.

BASED ON THE QUESTIONS THAT THE CLIENT ASK US, NEW AND INNOVATIVE SOLUTIONS ARE CREATED that are able to RESPOND TO THE CLIENT'S NEEDS. All this is made possible thanks to a highly qualified work team "engineers, designers, software engineers and professionals, study and analyze all the possible solutions to create the best finished product".

## DESIGN METHODOLOGY

The development team designs and plans down to the smallest details, carrying out an analysis of the client's needs. Spaces and machinery are evaluated, based on the needs of today and tomorrow, thanks to the help of cutting-edge software for 3D mechanical design.

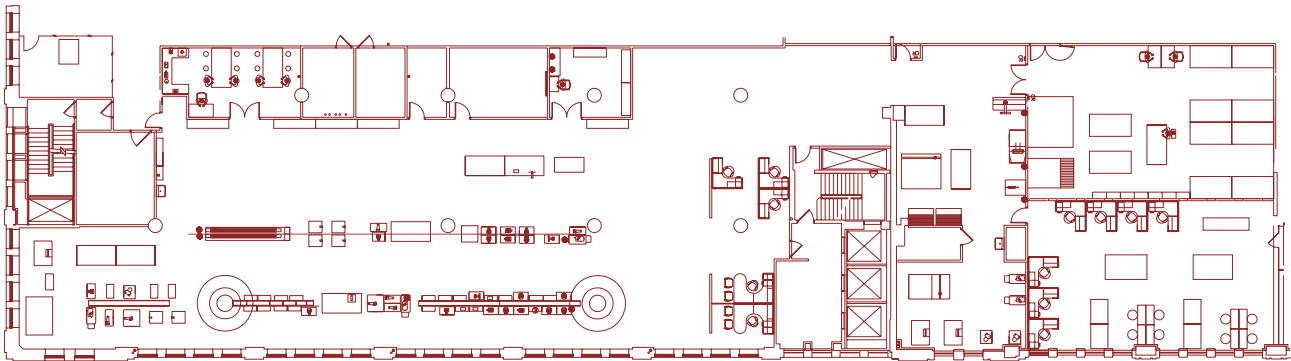
HEADQUARTERS: Via Cararola 59 - Vigevano 27029 (PV) - Telephone: (+39) 0381.42423 - 0381.344290

[info@gallispa.it](mailto:info@gallispa.it) - [commerciale@gallispa.com](mailto:commerciale@gallispa.com) - [support@gallispa.com](mailto:support@gallispa.com)

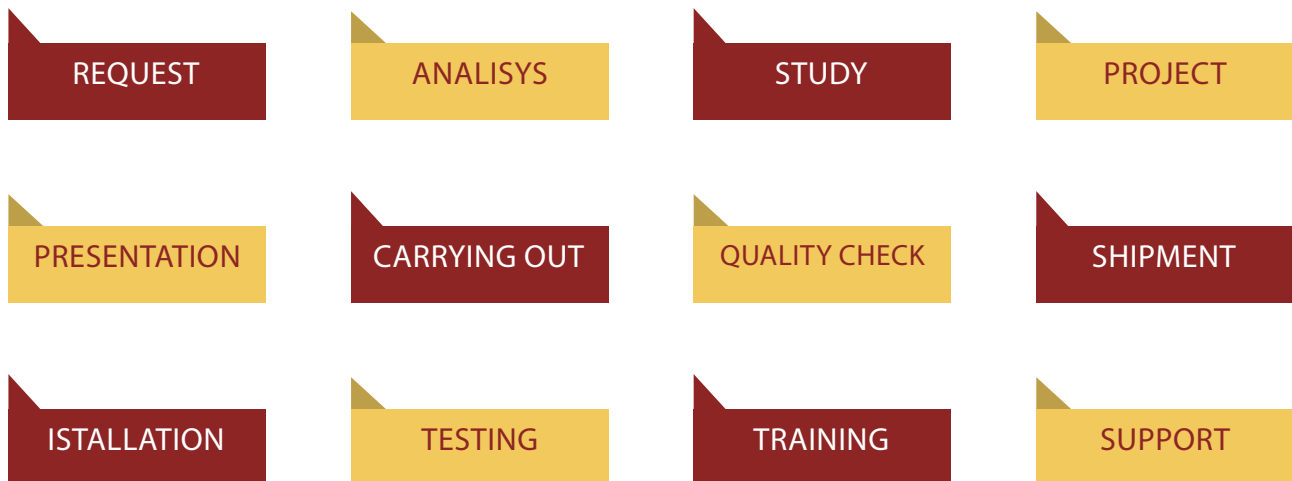
# CORPORATE SERVICES

Galli S.p.a. offers a customization and design service for new systems designed to meet the customer's needs. This service aims to analyze in detail the entire production process for the creation of the finished product, offering a complete solution capable of meeting the quality and production standards required over time.

## PROJECT EXAMPLE

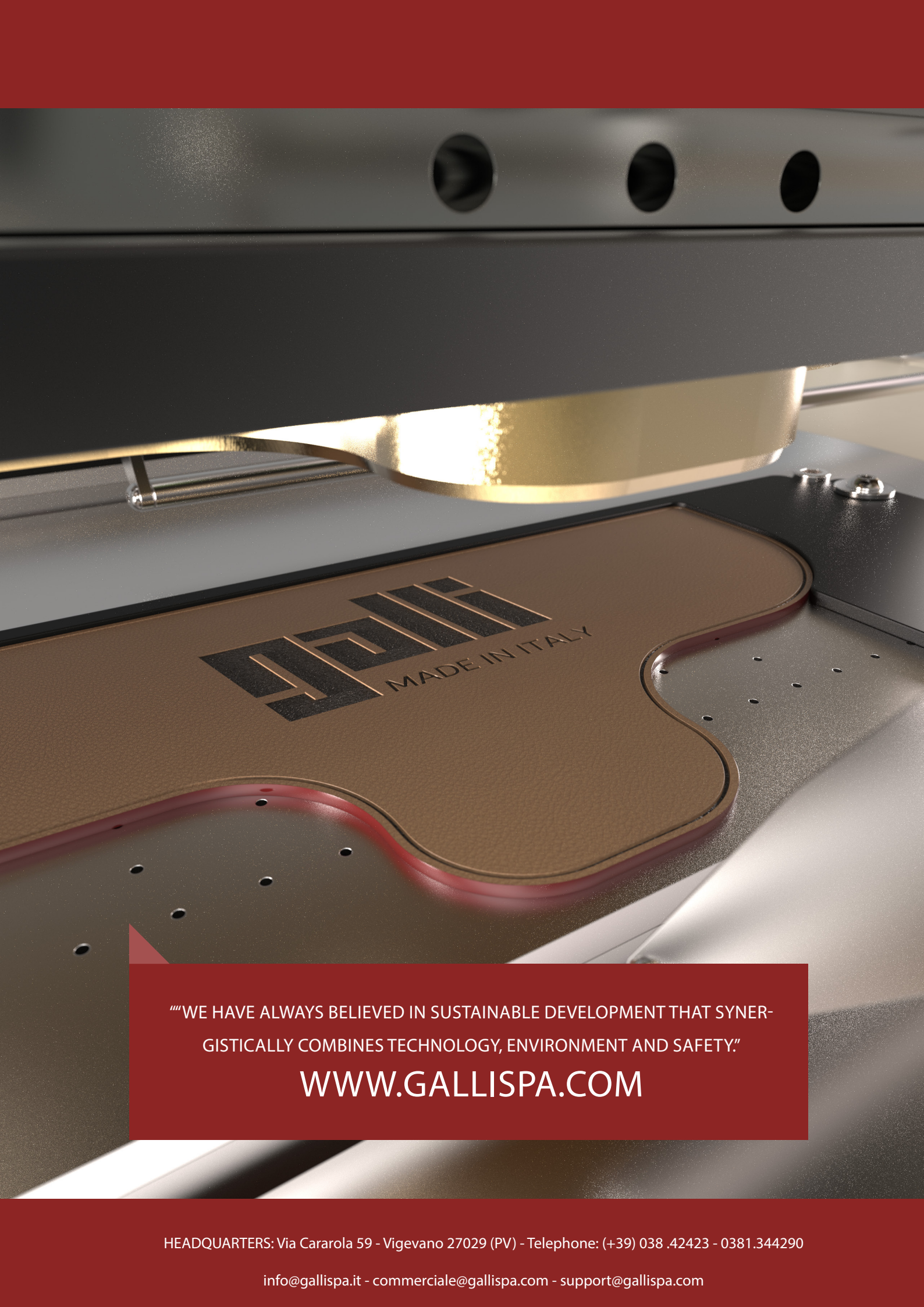


## DEVELOPMENT STAGES



Every single project is carefully analyzed through a PRE-ANALYSIS able to gather all the information and highlight all the hypothetical improvements studied by our development TEAM.

Choosing Galli S.p.a. is not just relying on a company, but relying on a team of professionals able to create innovative solutions for companies.



**GALLISPA**  
MADE IN ITALY

“WE HAVE ALWAYS BELIEVED IN SUSTAINABLE DEVELOPMENT THAT SYNERGISTICALLY COMBINES TECHNOLOGY, ENVIRONMENT AND SAFETY.”

[WWW.GALLISPA.COM](http://WWW.GALLISPA.COM)

HEADQUARTERS: Via Cararola 59 - Vigevano 27029 (PV) - Telephone: (+39) 038 .42423 - 0381.344290

[info@gallispa.it](mailto:info@gallispa.it) - [commerciale@gallispa.com](mailto:commerciale@gallispa.com) - [support@gallispa.com](mailto:support@gallispa.com)



## CONTACTS

REQUEST FOR MACHINERY QUOTES: [commerciale@gallispa.com](mailto:commerciale@gallispa.com)

TECHNICAL SUPPORT AND SPARE PARTS: [support@gallispa.com](mailto:support@gallispa.com)

CONSUMABLES AND ACCESSORIES: [info@gallispa.it](mailto:info@gallispa.it)

ADMINISTRATIVE OFFICE: [amministrazione@gallispa.com](mailto:amministrazione@gallispa.com)

SHIPMENTS: [spedizioni@gallispa.com](mailto:spedizioni@gallispa.com)

SUPPLIERS: [ufficioacquisti@gallispa.com](mailto:ufficioacquisti@gallispa.com)



[WWW.GALLISPA.COM](http://WWW.GALLISPA.COM)

Google™

YouTube  
Broadcast Yourself™



facebook