

MARINE BATTERY SYSTEMS

KREISEL 

WE DRIVE THE FUTURE OF MARINE ELECTRIFICATION

As the electrification of cars and commercial traffic becomes the new standard, the time has come to take the next steps towards more sustainable marine solutions. KREISEL Electric is dedicated to reducing the pollution of marine ecosystems through the large scale electrification of commercial and recreational marine vessels.

Benefit from optimum lifetime, safety and performance with Dynamic Performance Management. This utilizes our in-house developed battery management software and the patented KREISEL cell immersion cooling technology that stand for impressive thermal performance and high efficiency on pack and system level. A low temperature spread on pack and cell level enables a remarkable service life and reliability.

KREISEL BATTERY SYSTEMS

WHERE HIGH-TECH, KNOW-HOW, AND SUSTAINABILITY EFFORTS MEET.



PATENTED IMMERSION COOLING

It helps to prevent the need for extensive pre-heating or cooling, enabling optimum operation within minutes. And electrifies battery powered applications across different environments on a global scale from arctic to desert conditions.



ONE SOURCE

With our in-house R&D center and extensive production capacities, we handle everything from pre-development to testing and validation, ready for a seamless and future-proof battery technology for your vessel.



STANDARDIZED BATTERIES

Profit from the experience gathered in countless prototype and high-volume customer projects on a global scale. Benefit from immediate availability of KREISEL batteries for large-scale projects to get your project on the water.



SAFETY COMPLIANCE

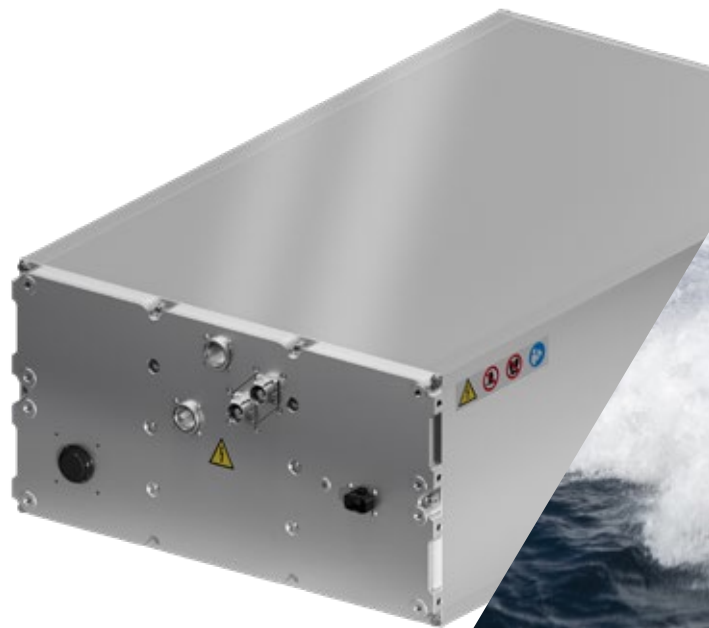
KREISEL battery packs offer a reliable overall system that is tested to meet international safety standards. They are designed in accordance with ECE R100.03 & R10.06, IEC 62619 & 62620, UL 2580, UN38.3, and more.

DNV CERTIFIED

CERTIFIED SINGLE & MULTIPACK CONFIGURATION

The DNV certification process assesses multiple aspects, including safety, performance, and environmental sustainability. The KREISEL KBP63 battery system is the first battery of the line-up to successfully meet all the necessary criteria, confirming its excellence in these key areas.

The certification also extends to large battery scaling, meaning multiple packs connected in series or parallel have been certified under the DNV process. The certification affirms that KREISEL Electric has implemented comprehensive measures to guarantee the highest level of safety for their product, mitigating risks associated with battery operation in the marine sector.





MARINE BATTERY LINEUP

KREISEL 

KBE.24.450S*

ENERGY CONTENT (TOTAL)	24 kWh	WEIGHT (DRY)	160 kg
OPERATING VOLTAGE (MIN/MAX)	335 / 446 V	DISCHARGE MAX. (10 SEC)**	92 kW
DIMENSION (LXWXH)	885x509x225 mm	DISCHARGE CONT.**	46 kW

KBE.39.750C*

ENERGY CONTENT (TOTAL)	39 kWh	WEIGHT (DRY)	253 kg
OPERATING VOLTAGE (MIN/MAX)	558 / 743 V	DISCHARGE MAX. (10 SEC)**	154 kW
DIMENSION (LXWXH)	790x509x450 mm	DISCHARGE CONT.**	77 kW

KBE.39.750S*

ENERGY CONTENT (TOTAL)	39 kWh	WEIGHT (DRY)	238 kg
OPERATING VOLTAGE (MIN/MAX)	558 / 743 V	DISCHARGE MAX. (10 SEC)**	154 kW
DIMENSION (LXWXH)	1356x509x225 mm	DISCHARGE CONT.**	77 kW

KBE.59.750M*

ENERGY CONTENT (TOTAL)	59 kWh	WEIGHT (DRY)	345 kg
OPERATING VOLTAGE (MIN/MAX)	558 / 743 V	DISCHARGE MAX. (10 SEC)**	231 kW
DIMENSION (LXWXH)	1076x666x348 mm	DISCHARGE CONT.**	116 kW

KBE.60.400M*

ENERGY CONTENT (TOTAL)	60 kWh	WEIGHT (DRY)	361 kg
OPERATING VOLTAGE (MIN/MAX)	285 / 378 V	DISCHARGE MAX. (10 SEC)**	234 kW
DIMENSION (LXWXH)	1076x666x348 mm	DISCHARGE CONT.**	112 kW

KBP63

ENERGY CONTENT (TOTAL)	63 kWh	WEIGHT (DRY)	393 kg
OPERATING VOLTAGE (MIN/MAX)	306 / 407 V	DISCHARGE MAX. (10 SEC)**	250 kW
DIMENSION (LXWXH)	1111x795x351 mm	DISCHARGE CONT.**	120 kW

* PRELIMINARY DATA / IMAGES

** DEPENDING ON SOC AND TEMPERATURE

MODULAR FREEDOM OF PLACEMENT

Optimize available space utilization with flexible battery installation. Freedom of orientation, combined with parallel and serial connection options, allows for a maximum energy content of up to 1 MWh.



UP TO 16X FOR
1 MWh



FREE ORIENTATION
3 AXIS



FULL
TECHNICAL
DATA

