



Rennova Solutions

Indigenous Manufacturer of
Automated Test Equipment,
Electric Vehicle (EV) Products,
Automotive Electronics and
Elevator Electronics





ABOUT US

Rennova Solutions, an **ISO certified** and **Government of India recognized start-up company**, driven by a vision to deliver innovative and reliable electronic solutions that anticipate and exceed the evolving needs of our customers. From pioneering Automated Test Equipment to advancing EV technology, we are committed to being a catalyst for progress in the electronics industry.

Our strength

- **Driven by Innovation:** We invest heavily in research and development, ensuring our solutions are at the forefront of technology.
- **Quality and Reliability:** Our ISO certification underscores our commitment to rigorous quality standards in design, manufacturing, and service.
- **Indigenous Expertise, Global Vision:** We deliver innovative and cost-effective solutions by integrating local design and manufacturing excellence with globally recognized standards.
- **End-to-End Solutions:** We offer comprehensive capabilities, from concept design and development to manufacturing and support.

Our Mission

To engineer intelligent, cost-effective, and reliable automated test equipment using indigenous components and smart design. We collaborate with OEMs across the elevator, automotive, EV, defence, aerospace, and EMS sectors to bring their electronic visions to life. Through continuous innovation, we strive to enhance the quality and affordability of our solutions—empowering industries and improving lives.

Our Vision

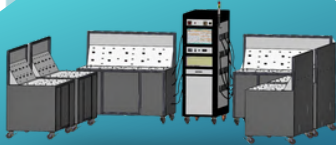
To be a globally recognized leader in crafting innovative electronic solutions that shape the future.



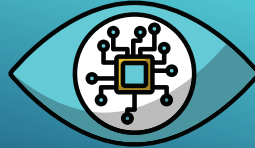
Comprehensive Testing Solutions



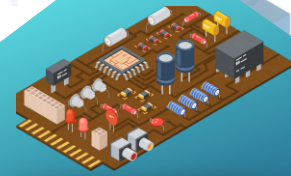
Hardware In Loop
(HIL) Tester



Wiring Harness
Tester



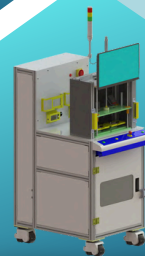
AI Based Vision
Tester



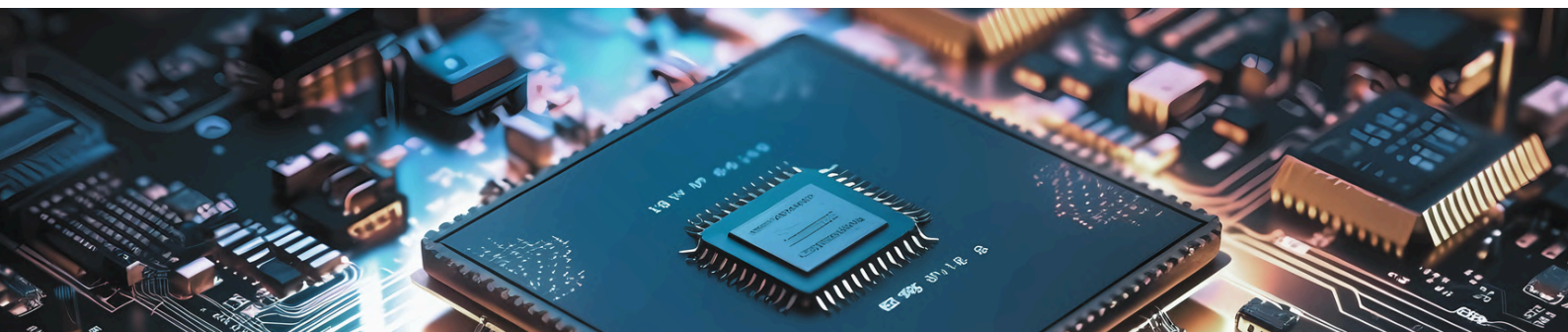
In Circuit Tester
(ICT)



Radio Frequency
(RF) Tester

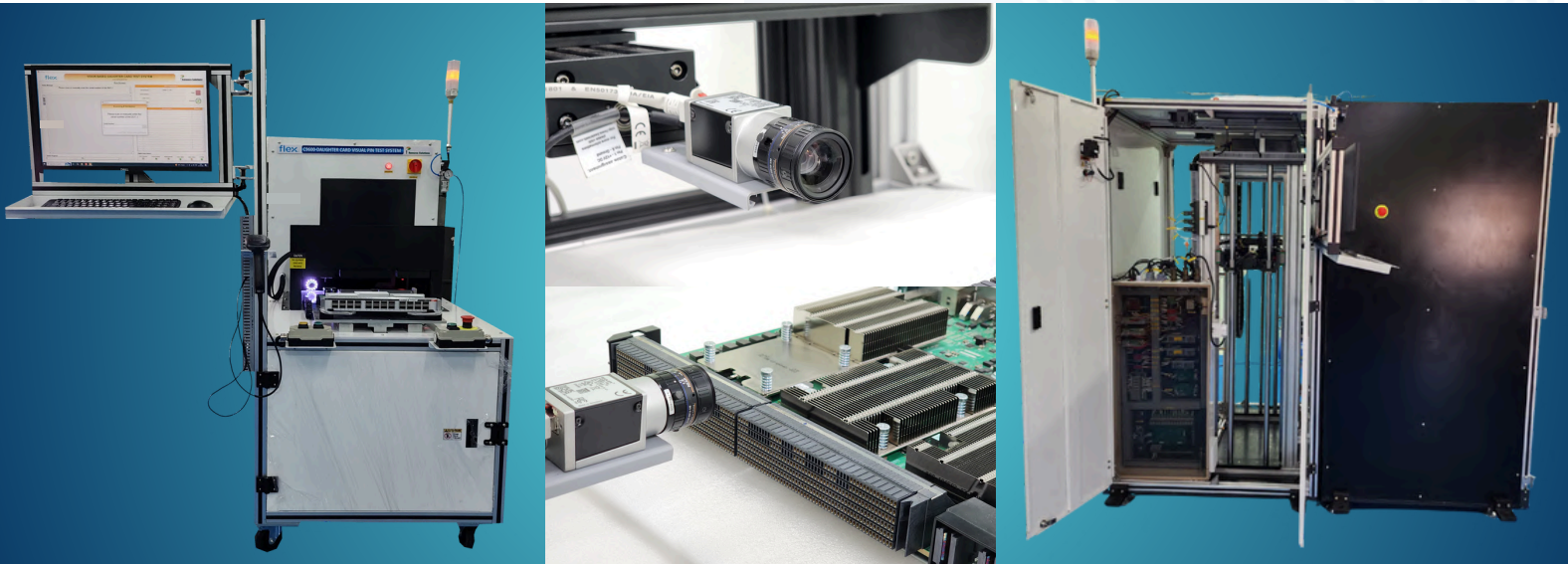


Functional Circuit
Tester (FCT)





AI-Based Vision Testers



Our proprietary AI algorithm leverages deep learning and computer vision to analyze, interpret, and enhance visual data with high accuracy and speed.

Key Features

- **Smart Detection:** Identifies objects, patterns, and anomalies in real-time.
- **Adaptive Learning:** Continuously improves accuracy through feedback and data expansion.
- **Segmentation & Classification:** Breaks down complex visuals into meaningful components.
- **Edge Intelligence:** Optimized for deployment on embedded systems and edge devices.

Applications

- Inspection of connector/pin alignment, component, solder joint.
- Inspection for product defects, including enclosure and casing issues such as scratches, dents, and colour variations.
- Verification of LED light parameters such as intensity, RGB values, x/y coordinates, hue, CCT, DUV, and wavelength using vision and fiber optics technology.
- Solder Paste Inspection (SPI) in EMS facilities.
- Automatic Optical Inspection (AOI) of PCB assemblies for soldering correctness.



End-of-Line (EOL) & Functional Testers



We design and deliver advanced EOL and Functional Testers tailored for Electronic Control Units (ECUs), Motor Control Units (MCUs), Battery Management Systems (BMS), DC-DC converters, and PCBA/Box build Assemblies.

Key Features

- **High Accuracy & Reliability:** Ensures consistent performance validation across automotive and industrial electronics.
- **Customizable Test Frameworks:** Adaptable to various protocols and hardware configurations.
- **Support for EV & Automotive Standards:** Compliant with ISO, AEC-Q, and other industry benchmarks.
- **AI-Driven Diagnostics:** Intelligent fault detection and predictive analytics for enhanced quality control.
- **Box Build Integration:** Seamless testing for complete assemblies, reducing time-to-market.
- Simulation and measurement of digital, analog, and PWM signals
- Communication interface validation (CAN, CAN-FD, LIN, RS422, etc.)
- Industry 4.0 compliant systems (MES server update, component traceability, cloud update)
- Boundary conditions testing (over current, short circuit, fault simulations)
- Integrated testing of electro-mechanical device like steering, motors, dyno's etc,

Applications

- Aerospace & Defence Electronics
- Automotive & EV sectors
- Medical Electronics
- EMS sectors
- Locomotive Electronics
- Vertical Transportation



Vehicle Test Bench



A comprehensive platform for simulating, validating, and analysing vehicle electronic systems in lab setup. Designed for automotive, EV, and R&D environments.

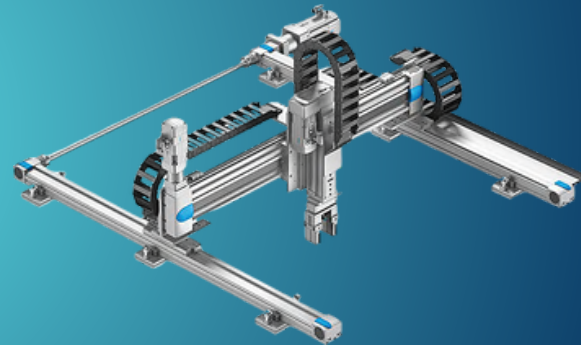
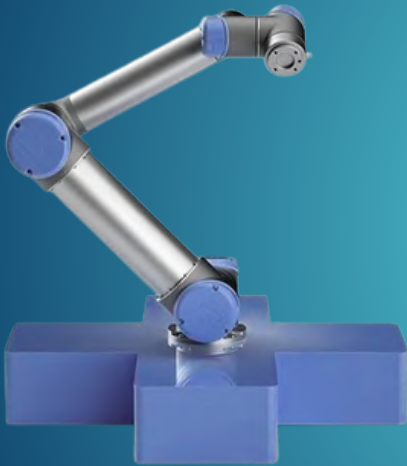
Key Features

- Real-time simulation & data logging
- Protocol support: CAN, LIN, Flex Ray, Ethernet
- Fault injection & Automated test sequences
- Test repeatability
- Customizable for various vehicle platforms
- Cost-effective & locally engineered
- Fast deployment & scalability

Applications

- Automotive R&D & Validation
- Incoming Quality Inspection
- OEM & Tier-1 labs
- Academic lab setup & training

Industrial Automations



We deliver intelligent automation solutions that optimize manufacturing, assembly, and testing processes across industries. Our systems integrate seamlessly with existing infrastructure to enhance productivity, quality, and scalability.

Key Features

- PLC, SCADA, and IoT integration
- Real-time monitoring and control
- Custom automation for assembly lines, test stations, and packaging
- Predictive maintenance and analytics
- Energy-efficient and scalable designs
- Indigenous design and engineering expertise
- Cost-effective and modular solutions
- Rapid deployment and minimal downtime
- Industry 4.0
- Proven success across industries

Applications

- Automotive & EV manufacturing
- EMS and box build operations
- Aerospace and Defense production
- Smart factories and industrial R&D

Our Clients



Mahindra
Rise.



BOSCH
Invented for life



AMPERE



ATHER



flex.



Avalon
manufacturing your success



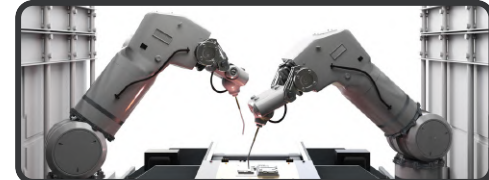
OTIS



KONE



Reliance
Industries Limited



Rennova Solutions



R&D Centre

#14, Ground Floor & 1st Floor,
Gangotri Colony, Krishnagiri Road,
Hosur 635 109,
Tamil Nadu

Manufacturing Facility

No. 2/257-A1, Survey# 174/2,
T.T Industrial Business Park,
Adhiyaman Bypass Road, NH 844, Sogathur Post,
Dharmapuri - 636 809, Tamil Nadu

Support Centre

F#206, Capital City,
Opp. to Mahindra Manufacturing Plant Gate1,
Phase IV, Chakan MIDC,
Chakan Taluka, Khed, Pune 410501

Overseas Office

Rennova Innovations & Solutions,
3711, 15 Lower Jarvis St, Toronto, ON M5E
0C4, Canada

Contact Us

☎ 89258 26951/52/53/54

✉ marketing@rennovasolutions.com

🌐 www.rennovasolutions.com

📌 Rennova Solutions

Brochure



Website

